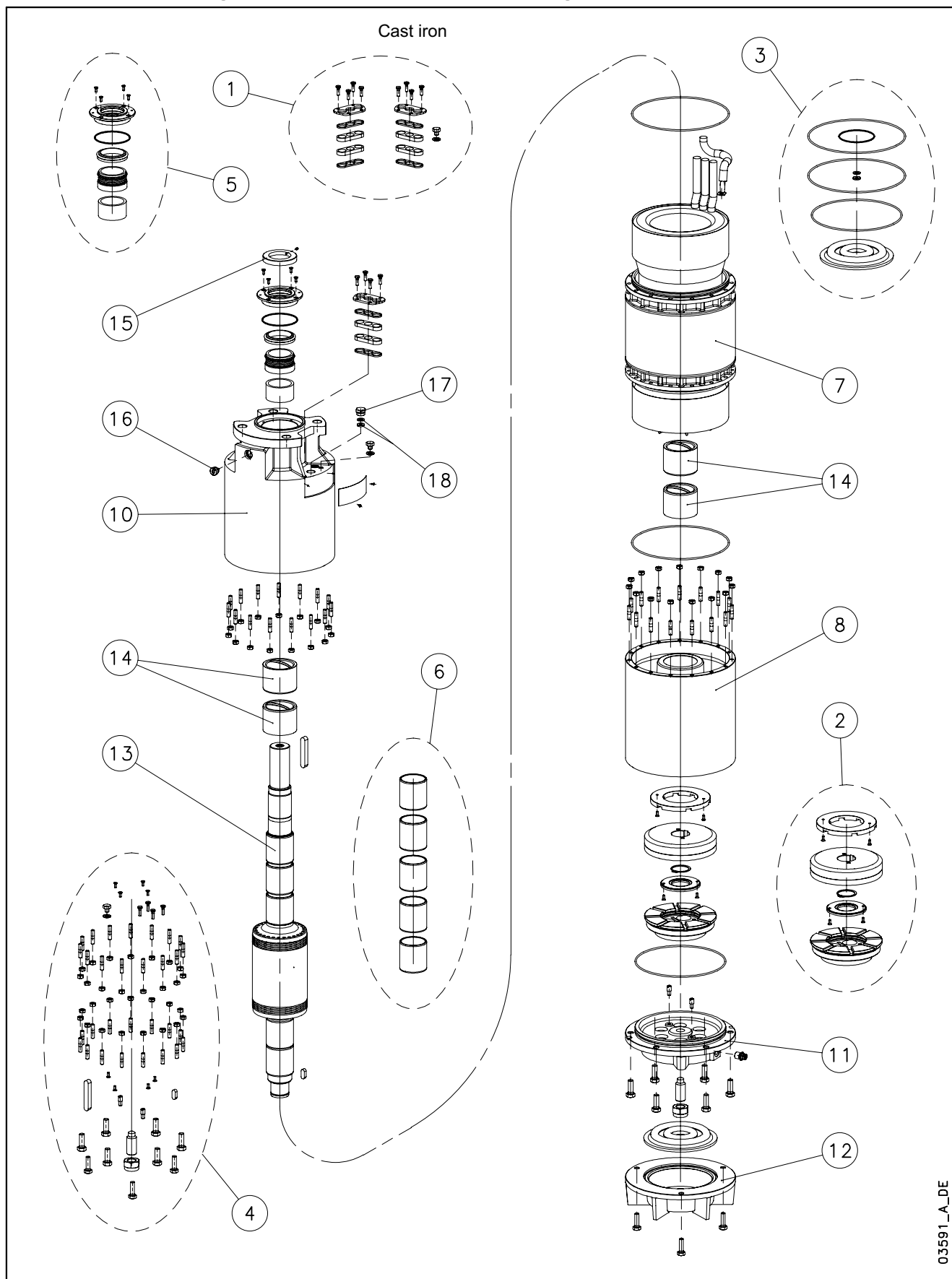


L12W-L12W HT/A - CP12W-CP12W HT/A - CP P12A-CP P12AH



03591_A_DE

N.	Descrizione it	Description en	Description fr	Beschreibung de	Descripción es	Descrição pt
1	Kit pressacavi	Kit cable glands	Kit press étoupes	Kabelverschraubungensatz	Kit sujetascable	Kit pressacabos
2	Kit reggispinta completo	Thrust bearing kit, complete	Kit palier de butée complet	Drucklagerbausatz komplet	Kit cojinete de empuje completo	Kit Apoios, completo
3	Kit guarnizioni	Seals kit	Kit Garnitures	Bausatz Dichtungen	Kit juntas	Kit guarnições
4	Kit Viterie	Screws kit	Kit Visserie	Bausatz Schrauben	Kit tornillos	Kit parafusos
5	Kit tenuta/Flangia	Kit seals / Flange	Kit garnitures / Bride	Bausatz dichtungen / Flansch	Kit juntas / Brida	Kit Emanque/Flange
6	Kit boccole	Kit bearing bush	Kit roulement à douille	Bausatz buchsenlager	Kit cojinete de casquillo	Kit rolamento em bucha
7	Statore completo	Stator assy	Stator complet	Stator komplet	Estator completo	Estator complet
8	Supporto inferiore	Lower support	Support inférieur	Untere Lagerung	Soporte inferior	Suporte inferior
10	Supporto superiore	Upper bracket	Support supérieur	Obere Lagerung	Soporte superior	Suporte superior
11	Supporto kit reggispinta	Thrust bearing bracket kit	Support kit palier de butée	Drucklagergehäuse	Soporte kit cojinete de empuje	Suporte Kit Apoios
12	Fondello diaframma	Bottom cover diaphragm	Couvercle inférieur soufflet	Untere Abdeckung Blasebalg	Tapa inferior de sujeta	Tampa inferior do fole
13	Albero rotore	Rotor shaft	Arbre rotor	Rotorwelle	Árbol rotor	Veio rotor
14	Boccola cuscinetto sup. / inf.	Upper / lower bush bearing	Roulement à douille supérieur / inférieur	Obere /Untere- buchsenlager	Cojinete de casquillo superior-inferior	Rolamento em bucha superior-inferior
15	Parasabbia	Sand guard	Anti-sable	Sandschutz	Protección de arena	Protecção Vedante
16	Valvola sfiato	Relief valve	Soupape de Purge	Ablassventil	Valvula de purga	Válvula
17	Tappo riempimento	Filling plug	Bouchon de remplissage	Füllstoff-Stecker	Tapón de llenado	Bujão
18	Guarnizione pressacavo	Cable gland gasket	Joint de press étoupe	Kabelverschraubungen Dichtung	Junta sujetacable	O-ring pressacabo
N.	Beschrijving nl	Περιγραφή el	Açıklama tr	Kuvaus fi	Описание ru	Opis pl
1	Kabelklem set	Σετ σφικτήρων καλωδίων	Kablo bez kiti	Kaapelinpuristinsarja	Комплект каб.уплотнителей	Zestaw mocowania kabla
2	Complete druklager set	Πλήρες σετ ωπτικού ρουλεμάν	Komple ayar pulu kiti	Täydellinen painelaakerisarja	Полный комплект упорного подшипника	Kompletny zestaw łożyska ciernego
3	Kit met dichtingen	Σετ τσιμουχών	Conta kiti	Tiivistesarja	КОМПЛЕКТ прокладок	ZESTAW Uszczelek
4	Kit met schroeven	Σετ βιδών	Vida kiti	Ruuvisarja	КОМПЛЕКТ винтов	ZESTAW wkręty
5	Mechanische afdichting/Flens	Σετ ανοχών στεγανότητας/Φλάντζας	Mekanik conta / Flanş	Tiivistesarja / Laippa	Комплект прокладок/фланца	Zestaw uszczelniaczy kołnieszka
6	Bus set	επάνω Σετ	Burç yatađı kiti	Holkilaakerisarja	КОМПЛЕКТ Подшипник со втулкой	Zestaw łożysko tulejowe
7	Stator compleet	Πλήρης στάτορας	Statör tamamı	Täydellinen staattori	Статор полный	Stator
8	Onderste steun	Κάτω φορέας	Alt segman braket	Alatuki	Нижняя опора	Dolny wspornik
10	Bovenste steun	Επάνω φορέας	Ust braket	Ylätuki	Верхняя опора	Górny wspornik
11	Steun druklager kit	Φορέας σετ ωπτικού ρουλεμάν	Bindirme yatađı kiti desteđi	Painelaakerisarjan tuki	Опора комплекта упорного подшипника	Wspornik zestawu łożyska wzdużnego
12	Bedekking onderkant de membraan	Κάλυμμα διαφράγματος	Zeminlemek kapađı Diyafram	Alaosan, kalvo	диафрагма основания крышка	Dolna pokrywa Ko nierz
13	Rotoras	Άξονας στροφείου	Rotor mili	Roottorin akseli	ось ротора	Wałek (z rotorem)
14	Bovenste /Onderste- Bus	Κορυφή / Κάτω ένοσφαιρου ρουλεμάν	Burç yatađı üstteki / alt	Holkilaakeri ylempi - alempi	Подшипник со втулкой верхне / низко	łożysko tulejowe wyższy / obniżać
15	Beschermkap	Προστατευτικό άμμου	Kum sızıntısı önleme	Hiekka suoja	Защита от песка	Ochrona przeciw-piaskowa
16	Ontluchtingsventiel	Βαλβίδα εξαερισμού	Tahliye valfi	Paineenrajoitusventtiili	Редукционный клапан	Zawór odpowietrzający
17	Vulplug	Πώμα πλήρωσης	Şarj fişı	Täyttötulppa	Пробка заполнения	Korek zalewowy
18	Kabelklem pakking	Περιβλήμα σφικτήρα καλωδίων	Kablo bez contası	Kaapelinpuristimen tiiviste	Прокладка уплотнителей кабеля	Uszczelniaç kabla

L12W/A 12" Submersible Motors

L12W 3Ph 380V 60Hz DOL	code	1850T386/B	2200T386/B	2600T386/B	3000T386/B
L12W 3Ph 380/660V 60Hz SD	code	1850T386/B	2200T386/B	2600T386/B	3000T386/B
	kW	185	220	260	300

1	Kit cable glands A316 EPDM 1X50/70	5KL30AAV			
	Kit cable glands A316 EPDM 1X95/120	5KL30AAA	Models DOL 220-260 kW		
*2	Kit thrust bearing	5KL41AAG	All models		
*3	Kit seals NBR	5KL02AAA	All models		
4	Kit screws A304	5KL40AAN	All models		
*5	Kit MECH CER/CARB/NBR D58 / Cover	5KL01AAA	All models with MECH Cover A316		
6	Kit bush bearing chromate	5KL35AAH	All models For REPAIR only		
8	Lower support cast iron	561450710	All models paint ACS approved		
10	Upper bracket DOL less 260 kW	561450720	All models paint ACS approved		
	Upper bracket DOL 260 kW	TbD	All models paint ACS approved		
	Upper bracket SD	561450730	All models paint ACS approved		
11	Thrust bearing bracket	561450700	All models paint ACS approved		
	Filling valve A316	549300040			
12	Bottom cover	564250100	All models paint ACS approved		
*14	Upper/lower bush bearing	562590050	All models, N. 4		
15	Sand guard A316	568600090	All models		
16	Release valve A316 NBR	549300070	All models		
17	Plug A316	540500010	All models		
18	Cable gland EPDM (plug item 17)	568560290	All models		
	Washer (plug item 17)	572635010	All models		

7	Stator assy DOL	code			
	Stator assy SD		540643715	540643725	
13	Rotor shaft Duplex	code	555080830	555080840	555080850

PVC Winding Wire					
380-3-60 DOL					
Wire Code					
Wire Type					
Tot wire need [m]					
380/660-3-60 SD					
Wire Code		573325817	573325819		
Wire Type		D2,1/3,1	D2,3/3,3		
Tot wire need [m]		1655	1535		
In case of order, the quantity delivered will depend from the coil currently available.					

Flat Power cable H07BB-F ACS approved					
380-3-60 DOL					
Cable code - 1m					
Section (mm ²)					
Cable code , ground - 5,5 m					
Section (mm ²)					
380/660-3-60 SD					
Cable code - 1m		572851274	572851276		
Section (mm ²)		2X70	2X95		
Cable code , ground - 5,5m		556990070	556990080		
Section (mm ²)		1X70	1X95		

Special Versions			
*3	Kit seals FPM	TBD	All models
*5	Kit seals / Cover SIC/SIC/NBR D.58	5KL01AAW	All models
16	Release valve FPM	549300071	All models
17	Plug 316 SS for PT100	540500020	All models
18	Cable gland gasket EPDM	568560290	All models, n. 2 for PT100
	Cable gland gasket FPM	568560291	All models, n. 2 for PT100
	Kit PT100 EPDM	5KL30AAX	All models

* Recommended spare parts - Parti di ricambio consigliate
* Pièces détachées conseillées - Empfohlene Ersatzteile

xylem

