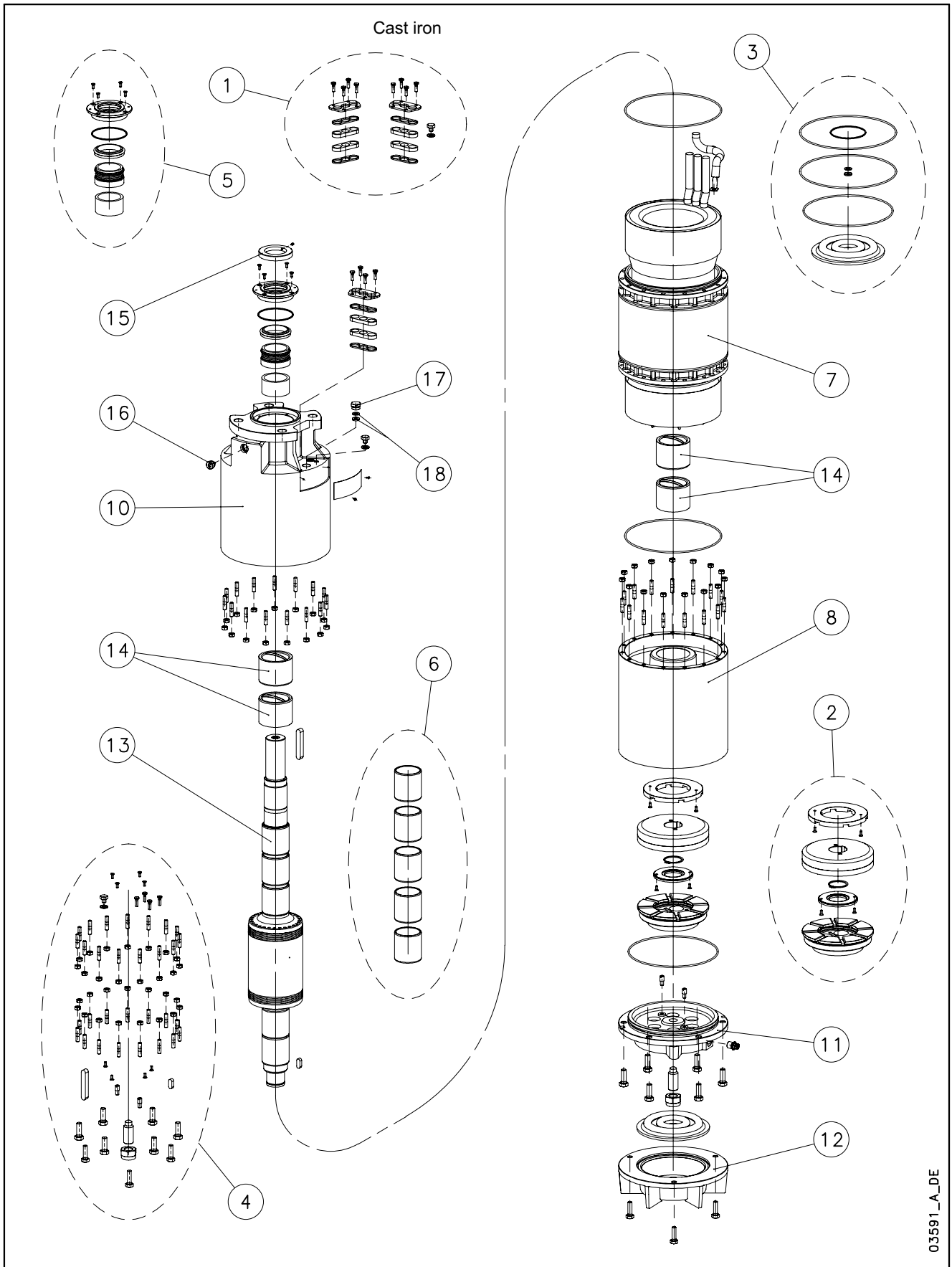


L12W-L12W HT/A - CP12W-CP12W HT/A - CP P12A-CP P12AH



N.	Descrizione it	Description en	Description fr	Beschreibung de	Descripción es	Descrição pt
1	Kit pressacavi	Kit cable glands	Kit press étoupes	Kabelverschraubungensatz	Kit sujetascable	Kit pressacabos
2	Kit reggispinta completo	Thrust bearing kit, complete	Kit palier de butée complet	Drucklagerbausatz komplet	Kit cojinete de empuje completo	Kit Apoios, completo
3	Kit guarnizioni	Seals kit	Kit Garnitures	Bausatz Dichtungen	Kit juntas	Kit guarnições
4	Kit Viterie	Screws kit	Kit Visserie	Bausatz Schrauben	Kit tornillos	Kit parafusos
5	Kit tenuta/Flangia	Kit seals / Flange	Kit garnitures / Bride	Bausatz dichtungen / Flansch	Kit juntas / Brida	Kit Empanque/Flange
6	Kit boccole	Kit bearing bush	Kit roulement à douille	Bausatz buchsenlager	Kit cojinete de casquillo	Kit rolamento em bucha
7	Statore completo	Stator assy	Stator complet	Stator komplet	Estator completo	Estator complet
8	Supporto inferiore	Lower support	Support inférieur	Untere Lagerung	Soporte inferior	Suporte inferior
10	Supporto superiore	Upper bracket	Support supérieur	Obere Lagerung	Soporte superior	Suporte superior
11	Supporto kit reggispinta	Thrust bearing bracket kit	Support kit palier de butée	Drucklagergehäuse	Soporte kit cojinete de empuje	Suporte Kit Apoios
12	Fondello diaframma	Bottom cover diaphragm	Couvercle inférieur soufflet	Untere Abdeckung Blasebalg	Tapa inferior de sujeta	Tampa inferior do fole
13	Albero rotore	Rotor shaft	Arbre rotor	Rotorwelle	Árbol rotor	Veio rotor
14	Boccola cuscinetto sup. / inf.	Upper / lower bush bearing	Roulement à douille supérieur / inférieur	Obere /Untere- buchsenlager	Cojinete de casquillo superior-inferior	Rolamento em bucha superior-inferior
15	Parasabbia	Sand guard	Anti-sable	Sandschutz	Protección de arena	Protecção Vedante
16	Valvola sfiato	Relief valve	Soupape de Purge	Ablassventil	Valvula de purga	Válvula
17	Tappo riempimento	Filling plug	Bouchon de remplissage	Füllstoff-Stecker	Tapón de llenado	Bujão
18	Guarnizione pressacavo	Cable gland gasket	Joint de press étoupe	Kabelverschraubungen Dichtung	Junta sujetacable	O-ring pressacabo
N.	Beschrijving nl	Περιγραφή el	Açıklama tr	Kuvaus fi	Описание ru	Opis pl
1	Kabelklem set	Σετ σφικτήρων καλωδίων	Kablo bez kiti	Kaapelinpuristinsarja	Комплект каб.уплотнителей	Zestaw mocowania kabla
2	Complete druklager set	Πλήρες σετ ωπτικού ρουλεμάν	Komple ayar pulu kiti	Täydellinen painelaakerisarja	Полный комплект упорного подшипника	Kompletny zestaw łożyska ciernego
3	Kit met dichtingen	Σετ τσιμουχών	Conta kiti	Tiivistesarja	КОМПЛЕКТ прокладок	ZESTAW Uszczelek
4	Kit met schroeven	Σετ βιδών	Vida kiti	Ruuvisarja	КОМПЛЕКТ винтов	ZESTAW wkręty
5	Mechanische afdichting/Flens	Σετ ανοχών στεγανότητας/Φλάντζας	Mekanik conta / Flanş	Tiivistesarja / Laippa	Комплект прокладок/фланца	Zestaw uszczelniaczy kołnieszka
6	Bus set	επάνω Σετ	Burç yatađı kiti	Holkilaakerisarja	КОМПЛЕКТ Подшипник со втулкой	Zestaw łożysko tulejowe
7	Stator compleet	Πλήρης στάτορας	Statör tamamı	Täydellinen staattori	Статор полный	Stator
8	Onderste steun	Κάτω φορέας	Alt segman braket	Alatuki	Нижняя опора	Dolny wspornik
10	Bovenste steun	Επάνω φορέας	Ust braket	Ylätuki	Верхняя опора	Górny wspornik
11	Steun druklager kit	Φορέας σετ ωπτικού ρουλεμάν	Bindirme yatađı kiti desteđi	Painelaakerisarjan tuki	Опора комплекта упорного подшипника	Wspornik zestawu łożyska wzdużnego
12	Bedekking onderkant de membraan	Κάλυμμα διαφράγματος	Zeminlemek kapađı Diyafram	Alaosan, kalvo	диафрагма основания крышка	Dolna pokrywa Ko nierz
13	Rotoras	Άξονας στροφείου	Rotor mili	Roottorin akseli	ось ротора	Wałek (z rotorem)
14	Bovenste /Onderste- Bus	Κορυφή / Κάτω έσφαίρου ρουλεμάν	Burç yatađı üstteki / alt	Holkilaakeri ylempi - alempi	Подшипник со втулкой верхне / низко	łożysko tulejowe wyższy / obniżać
15	Beschermkap	Προστατευτικό άμμου	Kum sızıntısı önleme	Hiekka suoja	Защита от песка	Ochrona przeciw-piaskowa
16	Ontluchtingsventiel	Βαλβίδα εξαερισμού	Tahliye valfi	Paineenrajotusventtiili	Редукционный клапан	Zawór odpowietrzający
17	Vulplug	Πώμα πλήρωσης	Şarj fişı	Täyttötulppa	Пробка заполнения	Korek zalewowy
18	Kabelklem pakking	Περιβλήμα σφικτήρα καλωδίων	Kablo bez contası	Kaapelinpuristimen tiiviste	Прокладка уплотнителей кабеля	Uszczelniaçz kabla

L2W 12" Submersible Motors

3- 380 60		DOL		3- 380/660 60		SD	
2200T405	2600T405	3000T405	2200T405	2600T405	3000T405	2200T405	2600T405
507008220	507008230	507008240	507008225	507008235	507008245		

220 kW	260 kW	300 kW	220 kW	260 kW	300 kW
--------	--------	--------	--------	--------	--------

Components

1	Sand guard	568600090	All models				
2	Mech seal cover	564000140	All models				
* 3	Lip seal	-					
8	Stator assy w/cable	540643710	540643720	540643730	540643715	540643725	540643735
	Wire Code	573325816	573325818	573325818	573325816	573325818	573325818
	PVC Wire Type	D2,0/2,9	D2,2/3,2	D2,2/3,2	D2,0/2,9	D2,2/3,2	D2,2/3,2
	Tot wire need [m]	1850	1750	1920	1850	1750	1920
9	Key	572650339	All models				
16	Dragging dowel	562200020	All models, 2 pcs				
18	Bottom cover	564250040	All models				
*19	Bellow	562360050	All models				
20	Adjusting screw	567200300	All models				
21	Locking nut	572633218	All models				
22	Filling valve	549300020	All models				
24	Thrust bearing bracket	561450160	All models				
26	Stop ring	572651133	All models				
*27	Bearing bush	562590050	All models, 4 pcs				
28	Lower bracket	561450170	All models				
30	Shaft w/rotor	555080830	555080840	555080850	555080830	555080840	555080850
32	Release valve	549300010	All models				
34	Upper bracket	561450180	561450180	561450180	561450190	561450190	561450190
	Plug A316	540500010	All models, if existing				
39	Journal sleeve chroma	562800030	All models, 4 pcs				
40	Up thrust washer	568360040	All models				
42	Key	572650461	All models				

Kit

* -> 4,5 + 33,36	Cable glands A316 / EPDM	5KL30AAV	Cable section 1x50-70 mm2 (plates & screws, seals, ground screw)			
* -> 4,5 + 33,36	Cable glands A316 / EPDM	5KL30AAW	Cable section 1x95-120 mm2 (plates & screws, seals, ground screw)			
* -> 9,10, 12-15, 26	Thrust bearing	5KL41AAB	All models			
* -> 23, 25, 29	ORings NBR - Bellow EPDM	5KL02AAA	All models			
-> 9,17,33-37,41-43	Screws A304	5KL40AAN	All models			
-> 38	Repair set	5KL35AAB	FOR REPAIRS ONLY (Journal sleeve chromate, shaft seal ring)			

Power cable ACS approved

Section mm2	code / m	suitable for:	Total qty required incl. ground cable	
			DOL	SD
1x70	572851274			
1x95	572851276		220 - 260 KW	
1X120	572851278		220 KW	300 KW
2x70	572851274		260 KW	
			300 KW	
			25 m	40 m

Mechanical seal, items 52- 54

Ceramic/Carbon/NBR - Cover A316	5KL01AAA
Widia / Widia / NBR - Cover A316	5KL01AAB

Power cable ACS approved lenght standard: 5,5 m

Section mm2	code	suitable for:	Total qty required incl. ground cable	
			DOL	SD
1x70	556990070			
1x95	556990080		220 - 260 KW	
1X120	556990090		220 KW	300 KW
2x70	556990070		260 KW	
			300 KW	

xylem

