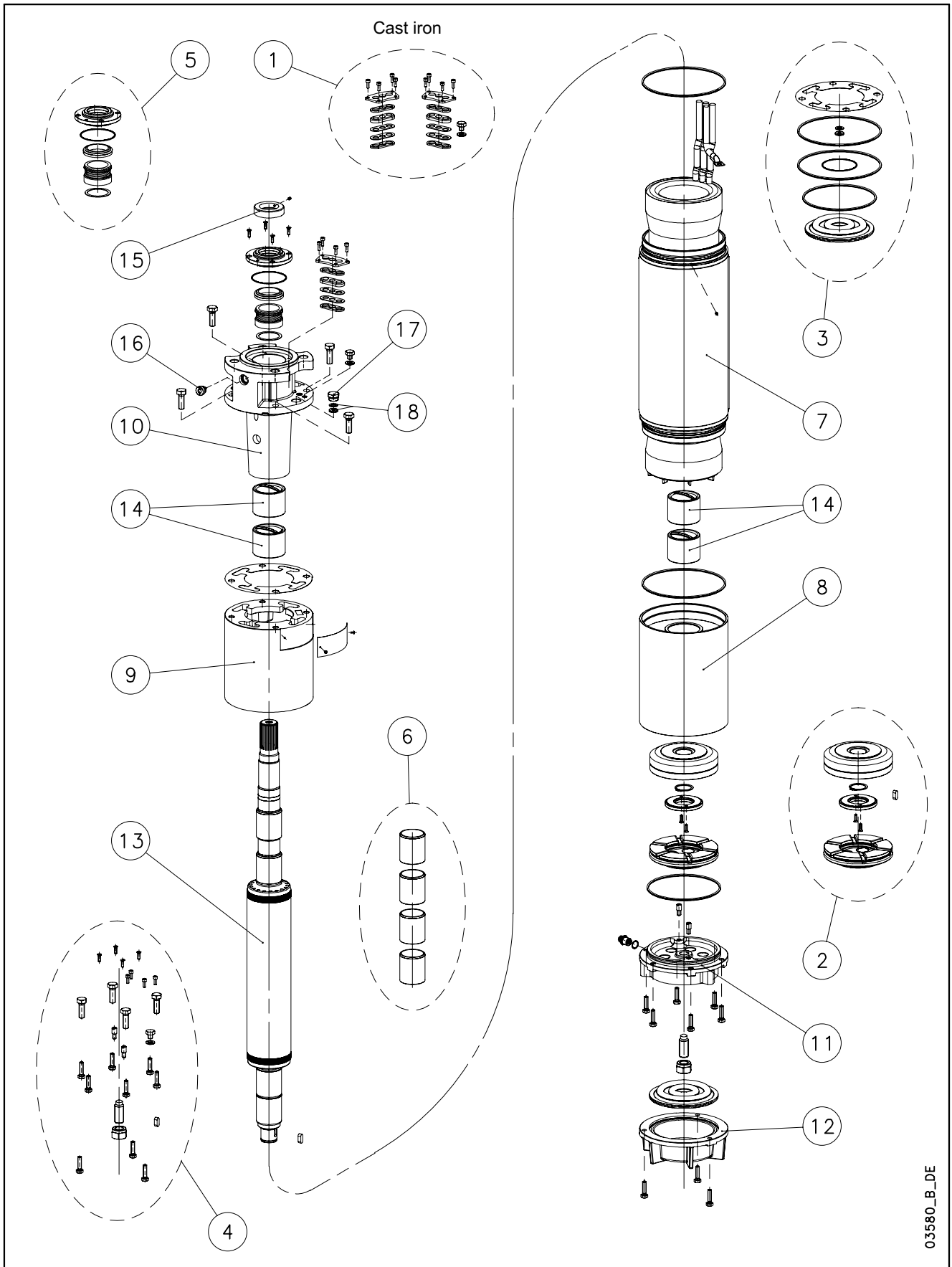


## L8W-L8W HT/A - CP8W-CP8W HT/A - CP P8A-CP P8AH



03580\_B\_DE

N.	Descrizione it	Description en	Description fr	Beschreibung de	Descripción es	Descrição pt
1	Kit pressacavi	Kit cable glands	Kit press étoupes	Kabelverschraubungensatz	Kit sujetascable	Kit pressacabos
2	Kit reggispinta completo	Thrust bearing kit, complete	Kit palier de butée complet	Drucklagerbausatz komplet	Kit cojinete de empuje completo	Kit Apoios, completo
3	Kit guarnizioni	Seals kit	Kit Garnitures	Bausatz Dichtungen	Kit juntas	Kit guarnições
4	Kit Viterie	Screws kit	Kit Visserie	Bausatz Schrauben	Kit tornillos	Kit parafusos
5	Kit tenuta/Flangia	Kit seals / Flange	Kit garnitures / Bride	Bausatz dichtungen / Flansch	Kit juntas / Brida	Kit Empanque/Flange
6	Kit boccole	Kit bearing bush	Kit roulement à douille	Bausatz buchsenlager	Kit cojinete de casquillo	Kit rolamento em bucha
7	Statore completo	Stator assy	Stator complet	Stator komplet	Estator completo	Estator complet
8	Supporto inferiore	Lower support	Support inférieur	Untere Lagerung	Soporte inferior	Suporte inferior
9	Distanziale	Spacer	Entretoise	Distanzstück	Distanciador	Distanciador
10	Supporto superiore	Upper bracket	Support supérieur	Obere Lagerung	Soporte superior	Suporte superior
11	Supporto kit reggispinta	Thrust bearing bracket kit	Support kit palier de butée	Drucklagergehäuse	Soporte kit cojinete de empuje	Suporte Kit Apoios
12	Fondello diaframma	Bottom cover diaphragm	Couvercle inférieur soufflet	Untere Abdeckung Blasebalg	Tapa inferior de sujeta	Tampa inferior do fole
13	Albero rotore	Rotor shaft	Arbre rotor	Rotorwelle	Árbol rotor	Veio rotor
14	Boccola cuscinetto sup. / inf.	Upper / lower bush bearing	Roulement à douille supérieur / inférieur	Obere /Untere- buchsenlager	Cojinete de casquillo superior-inferior	Rolamento em bucha superior-inferior
15	Parasabbia	Sand guard	Anti-sable	Sandschutz	Protección de arena	Protecção Vedante
16	Valvola sfiato	Relief valve	Soupape de Purge	Ablassventil	Valvula de purga	Válvula
17	Tappo riempimento	Filling plug	Bouchon de remplissage	Füllstoff-Stecker	Tarón de llenado	Bujão
18	Guarnizione pressacavo	Cable gland gasket	Joint de press étoupe	Kabelverschraubungen Dichtung	Junta sujetacable	O-ring pressacabo
N.	Beschrijving nl	Περιγραφή el	Açıklama tr	Kuvaus fi	Описание ru	Opis pl
1	Kabelklem set	Σετ σφικτήρων καλωδίων	Kablo bez kiti	Kaapelinpuristinsarja	Комплект каб.уплотнителей	Zestaw mocowania kabla
2	Complete drucklager set	Πλήρες σετ ωπτικού ρουλεμάν	Komple ayar pulu kiti	Täydellinen painelaakerisarja	Полный комплект упорного подшипника	Kompletny zestaw łożyska ciernego
3	Kit met dichtingen	Σετ τσιμουχών	Conta kiti	Tiivistesarja	КОМПЛЕКТ прокладок	ZESTAW Uszczelek
4	Kit met schroeven	Σετ βιδών	Vida kiti	Ruuvisarja	КОМПЛЕКТ винтов	ZESTAW wkręty
5	Mechanische afdichting/Flens	Σετ ανοχών στεγανότητας/Φλάντζας	Mekanik conta / Flans	Tiivistesarja / Laippa	Комплект прокладок/фланца	Zestaw uszczelniaczy kołnieszka
6	Bus set	επάνω Σετ	Burç yatađı kiti	Holkilaakerisarja	КОМПЛЕКТ Подшипник со втулкой	Zestaw łożysko tulejowe
7	Stator compleet	Πλήρης στάτορας	Statör tamamı	Täydellinen staattori	Статор полный	Stator
8	Onderste steun	Κάτω φορέας	Alt segman braket	Alatuki	Нижняя опора	Dolny wspornik
9	Afstandsstuk	Αποστάσεων	Ara halkası	Välilevy	Распорная	Część dystansowa
10	Bovenste steun	Επάνω φορέας	Ust braket	Ylätuki	Верхняя опора	Górny wspornik
11	Steun drucklager kit	Φορέας σετ ωπτικού ρουλεμάν	Bindirme yatađı kiti desteđi	Painelaakerisarjan tuki	Опора комплекта упорного подшипника	Wspornik zestawu łożyska wzduźnego
12	Bedekking onderkant de membraan	Κάλυμμα διαφράγματος	Zeminlemek kapađı Diyafram	Alaosan, kalvo	диафрагма основания крышка	Dolna pokrywa Ko nierz
13	Rotoras	Άξονας στροφείου	Rotor mili	Roottorin akseli	ось ротора	Wałek (z rotorem)
14	Bovenste /Onderste- Bus	Κορυφή / Κάτω έσφαιρου ρουλεμάν	Burç yatađı üstteki / alt	Holkilaakeri ylempi - alempi	Подшипник со втулкой верхне / низко	łożysko tulejowe wyższy / obniźać
15	Beschermkap	Προστατευτικό άμμου	Kum sızıntısı önleme	Hiekka suoja	Защита от песка	Ochrona przeciw-piaskowa
16	Ontluchtingsventiel	Βαλβίδα εξαερισμού	Tahliye valfi	Paineenrajotusventtiili	Редукционный клапан	Zawór odpowietrzający
17	Vulplug	Πώμα πλήρωσης	Şarj fişı	Täyttötulppa	Пробка заполнения	Korek zalewowy
18	Kabelklem pakking	Περιβλημα σφικτήρα καλωδίων	Kablo bez contası	Kaapelinpuristimen tiiviste	Прокладка уплотнителей кабеля	Uszczelniaacz kabla

## CP8W/B 8" Submersible Motors

<b>CP8W</b> 3Ph 380V 60Hz DOL	code	3001386/B	3701386/B	4501386/B	5201386/B	5501386/B	6001386/B	6701386/B	7501386/B	8301386/B	9301386/B
<b>CP8W</b> 3Ph 380/660V 60Hz SD	code	3001386/B	3701386/B	4501386/B	5201386/B	5501386/B	6001386/B	6701386/B	7501386/B	8301386/B	9301386/B
	kW	30	37	45	52	55	60	67	75	83	93

1	Kit cable glands EPDM 1X6/10/16	5KL30ABR	
	Kit cable glands EPDM 1X25/35	5KL30ABS	DOL models 67-93 kW
	Plug cable gland EPDM	568560420	
*2	Kit thrust bearing	5KL41AAA	All models
*3	Kit seals NBR	5KL02AAB	All models
4	Kit screws 304 SS	5KL40AAB	All models
*5	Kit MECH D45 /Cover CER/CARB/FPM	5KL01AAC	All models MECH Cover A316
6	Kit chromate bush bearing	5KL35AAF	All models <b>For REPAIR only</b>
8	Lower support cast iron	561450630	All models ACS approved paint
9	Upper Spacer	562550160	All models ACS approved paint
10	Upper bracket DOL	561450640	All models ACS approved paint
	Upper bracket DOL L8W/6	561450641	All models ACS approved paint
	Upper bracket SD	561450650	All models ACS approved paint
11	Thrust bearing bracket	561450620	All models ACS approved paint
	Filling valve A316 EPDM	549300040	All models
12	Bottom cover	564250080	All models ACS approved paint
*14	Kit carbon bush bearing	5KL35AAC	All models
15	Sand guard A316	568600040	All models
16	Release valve A316 NBR	549300070	All models
17	Plug A316	540500010	All models
18	Cable gland EPDM ( plug item 17 )	568560290	All models
	Washer ( plug item 17 )	572635010	All models

7	Stator assy DOL	code	540643220	540643230	540643240	540643250	540643260	540643270	540643280	540643290	
	Stator assy SD	code	540643225	540643235	540643245	540643255	540643265	540643275	540643285	540643295	540643305
13	Rotor shaft 420SS	code	555080220	555080230	555080240	555080250	555080260	555080270	555080280	555080290	555080300

<b>PVC Winding Wire</b>											
<b>380-3-60 DOL</b>											
Wire Code	573325812	573325815	573325816	573325817	573325818	573325812	573325813	573325815			
Wire Type	D1,6/2,4	D1,9/2,7	D2,0/2,9	D2,1/3,1	D2,2/3,2	D1,6/2,4	D1,7/2,5	D1,9/2,7			
Tot wire need [m]	650	595	525	480	505	950	960	915			
<b>380/660-3-60 SD</b>											
Wire Code	573325812	573325815	573325816	573325817	573325818	573325812	573325813	573325815	573325816	573325816	573325816
Wire Type	D1,6/2,4	D1,9/2,7	D2,0/2,9	D2,1/3,1	D2,2/3,2	D1,6/2,4	D1,7/2,5	D1,9/2,7	D2,0/2,9	D2,0/2,9	D2,0/2,9
Tot wire need [m]	650	595	525	480	505	950	960	915	900	865	
In case of order, the quantity delivered will depend from the coil currently available.											

<b>Flat Power cable H07BB-F ACS approved</b>											
<b>380-3-60 DOL</b>											
Cable code - 1m	572851264	572851264	572851266	572851266	572851266	572851266	572851268	572851268	572851270	572851270	572851270
Section (mm2)	1X10	1X10	1X16	1X16	1X16	1X16	1X25	1X25	1X35	1X35	1X35
Cable code , ground - 5,5m	556990020	556990020	556990030	556990030	556990030	556990030	556990040	556990040	556990050	556990050	556990050
Section (mm2)	1X10	1X10	1X16	1X16	1X16	1X16	1X25	1X25	1X35	1X35	1X35
<b>380/660-3-60 SD</b>											
Cable code - 1m	572851262	572851262	572851264	572851264	572851266	572851266	572851266	572851266	572851266	572851266	572851268
Section (mm2)	1X6	1X6	1X10	1X10	1X16	1X16	1X16	1X16	1X16	1X16	1X25
Cable code , ground - 5,5m	556990020	556990020	556990030	556990030	556990030	556990030	556990040	556990040	556990050	556990050	556990050
Section (mm2)	1X10	1X10	1X16	1X16	1X16	1X16	1X25	1X25	1X35	1X35	1X35

<b>Special Versions</b>			
*3	Kit seals FPM	5KL02AAH	All models
*5	Kit MECH D45 / Cover SIC/SIC/NBR /A304	5KL01AAD	All models
16	Release valve FPM	549300071	All models
17	Plug 316 SS for PT100	540500020	All models
18	Cable gland gasket EPDM	568560290	All models, n. 2 for PT100
	Cable gland gasket FPM	568560291	All models, n. 2 for PT100
	Kit cable gland PT100 EPDM	5KL30AAX	All models

(6) = WARNING. These parts replacement requires an Authorized Service.

\* Recommended spare parts - Parti di ricambio consigliate  
\* Pièces détachées conseillées - Empfohlene Ersatzteile

## CP8W/B 8" Submersible Motors

<b>CP8W</b> 3Ph 230V 60Hz DOL	code	3001236/B	3701236/B	4501236/B	5201236/B	5501236/B	6001236/B	6701236/B	7501236/B	8301236/B	9301236/B
<b>CP8W</b> 3Ph 220/380V 60Hz SD	code	3001236/B	3701236/B	4501236/B	5201236/B	5501236/B	6001236/B	6701236/B	7501236/B	8301236/B	9301236/B
	kW	30	37	45	52	55	60	67	75	83	93

1	Kit cable glands EPDM 1X6/10/16	5KL30ABR	
	Kit cable glands EPDM 1X25/35	5KL30ABS	DOL models 37-93 kW
	Plug cable gland EPDM	568560420	
*2	Kit thrust bearing	5KL41AAA	All models
*3	Kit seals NBR	5KL02AAB	All models
4	Kit screws 304 SS	5KL40AAB	All models
*5	Kit MECH D45 /Cover CER/CARB/FPM	5KL01AAC	All models MECH Cover A316
6	Kit chromate bush bearing	5KL35AAF	All models <b>For REPAIR only</b>
8	Lower support cast iron	561450630	All models ACS approved paint
9	Upper Spacer	562550160	All models ACS approved paint
10	Upper bracket DOL	561450640	All models ACS approved paint
	Upper bracket DOL L8W/6	561450641	All models ACS approved paint
	Upper bracket SD	561450650	All models ACS approved paint
11	Thrust bearing bracket	561450620	All models ACS approved paint
	Filling valve A316 EPDM	549300040	All models
12	Bottom cover	564250080	All models ACS approved paint
*14	Kit carbon bush bearing	5KL35AAC	All models
15	Sand guard A316	568600040	All models
16	Release valve A316 NBR	549300070	All models
17	Plug A316	540500010	All models
18	Cable gland EPDM ( plug item 17 )	568560290	All models
	Washer ( plug item 17 )	572635010	All models

7	Stator assy DOL	code	540643221	540643231	540643241							
	Stator assy SD											
13	Rotor shaft 420SS	code	555080220	555080230	555080240	555080250	555080260	555080270	555080280	555080290	555080300	555080310

PVC Winding Wire		230-3-60 DOL									
Wire Code		573325818	573325813	573325815							
Wire Type		D2,2/3,2	D1,7/2,5	D1,9/2,7							
Tot wire need [m]		360	635	615							
		220/380-3-60 SD									
Wire Code											
Wire Type											
Tot wire need [m]											

In case of order, the quantity delivered will depend from the coil currently available.

Flat Power cable H07BB-F ACS approved		230-3-60 DOL									
Cable code - 1m		572851266	572851268	572851268							
Section (mm2)		1X16	1X25	1X25							
Cable code , ground - 5,5 m		556990030	556990040	556990040							
Section (mm2)		1X16	1X25	1X25							
		220/380-3-60 SD									
Cable code - 1m											
Section (mm2)											
Cable code , ground - 5,5m											
Section (mm2)											

Special Versions			
*3	Kit seals FPM	5KL02AAH	All models
*5	Kit MECH D45 / Cover SIC/SIC/NBR /A304	5KL01AAD	All models
16	Release valve FPM	549300071	All models
17	Plug 316 SS for PT100	540500020	All models
18	Cable gland gasket EPDM	568560290	All models, n. 2 for PT100
	Cable gland gasket FPM	568560291	All models, n. 2 for PT100
	Kit cable gland PT100 EPDM	5KL30AAX	All models

(6) = WARNING. These parts replacement requires an Authorized Service.

\* Recommended spare parts - Parti di ricambio consigliate  
\* Pièces détachées conseillées - Empfohlene Ersatzteile

## CP8W/B HT 8" Submersible Motors

<b>CP8W</b> 3Ph 380V 60Hz <b>DOL</b>	code	<b>300T386/B</b>	<b>370T386/B</b>	<b>450T386/B</b>	<b>520T386/B</b>	<b>550T386/B</b>	<b>600T386/B</b>	<b>670T386/B</b>	<b>750T386/B</b>	<b>830T386/B</b>	<b>930T386/B</b>
			507163350								
<b>CP8W</b> 3Ph 380/660V 60Hz <b>SD</b>	code	<b>300T386/B</b>	<b>370T386/B</b>	<b>450T386/B</b>	<b>520T386/B</b>	<b>550T386/B</b>	<b>600T386/B</b>	<b>670T386/B</b>	<b>750T386/B</b>	<b>830T386/B</b>	<b>930T386/B</b>
	kW	30	37	45	52	55	60	67	75	83	93

1	Kit cable glands EPDM 1X6/10/16	5KL30ABR	
	Kit cable glands EPDM 1X25/35	5KL30ABS	DOL models 67-93 kW
	Plug cable gland EPDM	568560420	
*2	Kit thrust bearing	5KL41AAA	All models
*3	Kit seals NBR	5KL02AAB	All models
4	Kit screws 304 SS	5KL40AAB	All models
*5	Kit MECH D45 /Cover CER/CARB/NBR	5KL01AAC	All models MECH Cover A316
6	Kit chromate bush bearing	5KL35AAF	All models <b>For REPAIR only</b>
8	Lower support cast iron	561450630	All models ACS approved paint
9	Upper Spacer	562550160	All models ACS approved paint
10	Upper bracket DOL	561450640	All models ACS approved paint
	Upper bracket DOL L8W/6	561450641	All models ACS approved paint
	Upper bracket SD	561450650	All models ACS approved paint
11	Thrust bearing bracket	561450620	All models ACS approved paint
	Filling valve A316 EPDM	549300040	All models
12	Bottom cover	564250080	All models ACS approved paint
*14	Kit carbon bush bearing	5KL35AAC	All models
15	Sand guard A316	568600040	All models
16	Release valve A316 NBR	549300070	All models
17	Plug A316	540500010	All models
18	Cable gland EPDM ( plug item 17 )	568560290	All models
	Washer ( plug item 17 )	572635010	All models

7	Stator assy DOL	code	540643230									
	Stator assy SD											
13	Rotor shaft 420SS	code	555080220	555080230	555080240	555080250	555080260	555080270	555080280	555080290	555080300	555080310

PVC Winding Wire											
		<b>380-3-60 DOL</b>									
Wire Code		573325845									
Wire Type		D1,9/2,9									
Tot wire need [m]		550									
		<b>380/660-3-60 SD</b>									
Wire Code											
Wire Type											
Tot wire need [m]											
In case of order, the quantity delivered will depend from the coil currently available.											

Flat Power cable H07BB-F ACS approved											
		<b>380-3-60 DOL</b>									
Cable code - 1m		572851266									
Section (mm2)		1X16									
Cable code , ground - 5,5 m		556990030									
Section (mm2)		1X16									
		<b>380/660-3-60 SD</b>									
Cable code - 1m											
Section (mm2)											
Cable code , ground - 5,5m											
Section (mm2)											

Special Versions			
*3	Kit seals FPM	5KL02AAH	All models
*5	Kit MECH D45 / Cover SIC/SIC/NBR /A304	5KL01AAD	All models
16	Release valve FPM	549300071	All models
17	Plug 316 SS for PT100	540500020	All models
18	Cable gland gasket EPDM	568560290	All models, n. 2 for PT100
	Cable gland gasket FPM	568560291	All models, n. 2 for PT100
	Kit cable gland PT100 EPDM	5KL30AAX	All models

(6) = WARNING. These parts replacement requires an Authorized Service.

\* Recommended spare parts - Parti di ricambio consigliate  
\* Pièces détachées conseillées - Empfohlene Ersatzteile

xylem

