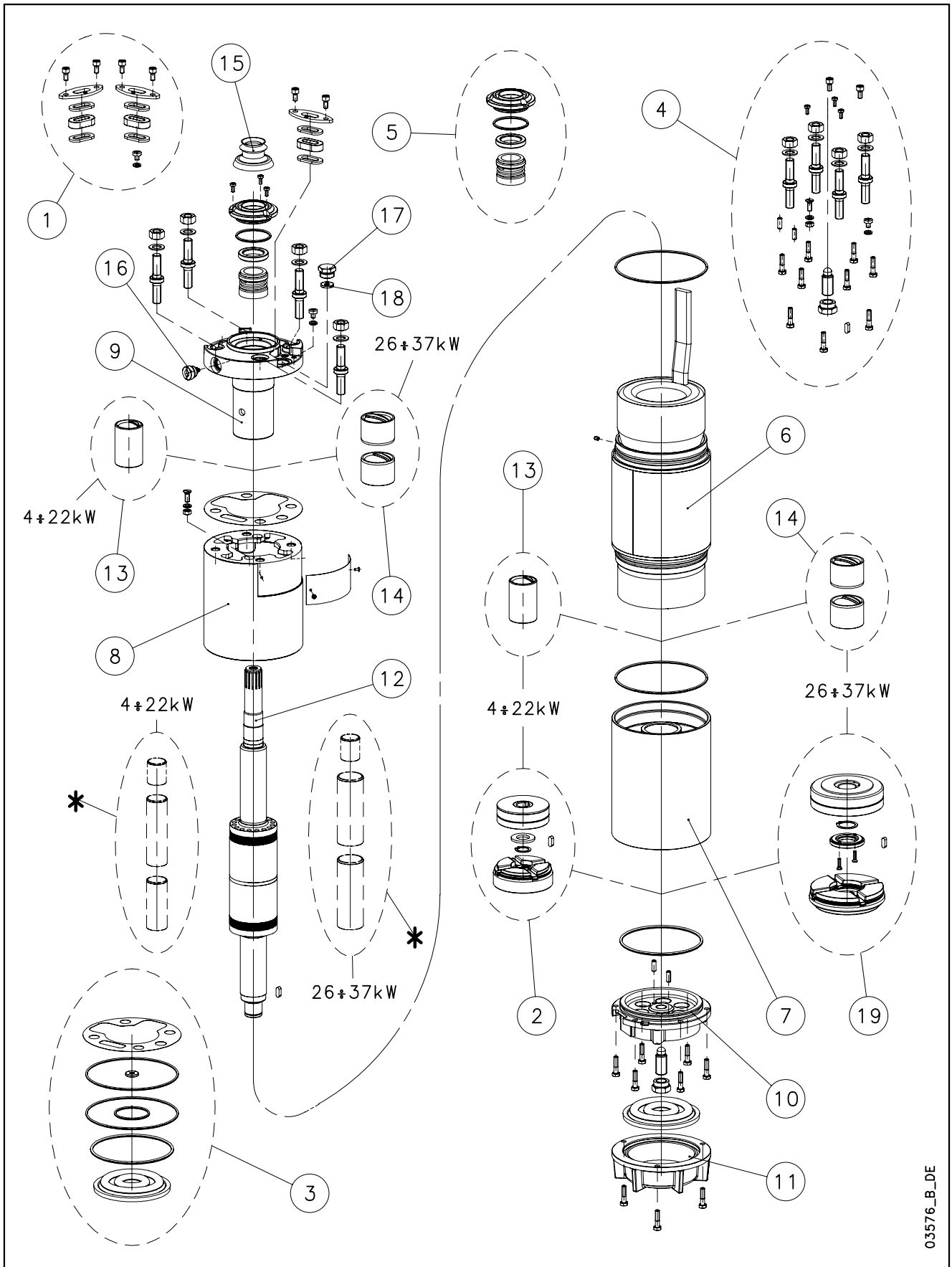


L6W-L6W HT/A - CP6W-CP6W HT/A



03576_B_DE

N.	Descrizione it	Description en	Description fr	Beschreibung de	Descripción es	Descrição pt
1	Kit pressacavi	Kit cable glands	Kit press étoupes	Kabelverschraubungensatz	Kit sujetascable	Kit pressacabos
2	Kit reggispinta completo da 4 a 22 kW	Thrust bearing kit complete from 4 to 22 kW	Kit palier de butée complet de 4 à 22 kW	Drucklagerbausatz komplet von 4 bis 22 kW	Kit cojinete de empuje completo de 4 a 22 kW	Kit Apoios completo de 4 a 22 kW
3	Kit guarnizioni	Seals kit	Kit Garnitures	Bausatz Dichtungen	Kit juntas	Kit guarnições
4	Kit Viterie	Screws kit	Kit Visserie	Bausatz Schrauben	Kit tornillos	Kit parafusos
5	Kit tenuta/Flangia	Kit seals / Flange	Kit garnitures / Bride	Bausatz dichtungen / Flansch	Kit juntas / Brida	Kit Empanque/Flange
6	Statore completo	Stator assy	Stator complet	Stator komplet	Estator completo	Estator complet
7	Supporto inferiore	Lower support	Support inférieur	Untere Lagerung	Soporte inferior	Suporte inferior
8	Distanziale	Spacer	Entretoise	Distanzstück	Distanciador	Distanciador
9	Supporto superiore	Upper bracket	Support supérieur	Obere Lagerung	Soporte superior	Suporte superior
10	Supporto kit reggispinta	Thrust bearing bracket kit	Support kit palier de butée	Drucklagergehäuse	Soporte kit cojinete de empuje	Suporte Kit Apoios
11	Fondello diaframma	Bottom cover diaphragm	Couvercle inférieur soufflet	Untere Abdeckung Blasebalg	Tapa inferior de sujeta	Tampa inferior do fole
12	Albero rotore	Rotor shaft	Arbre rotor	Rotorwelle	Árbol rotor	Veio rotor
13	Boccola cuscinetto sup./inf. da 4 a 22kW	Upper/lower bush bearing from 4 to 22 kW	Roulement à douille supérieur/inférieur de 4 à 22 kW	Obere / Untere buchsenslager von 4 bis 22 kW	Cojinete de casquillo superior -inferior de 4 a 22 kW	Rolamento em bucha superior-inferior de 4 a 22 kW
14	Boccola cuscinetto sup./inf. da 26 a 37kW	Upper/lower bush bearing from 26 to 37 kW	Roulement à douille supérieur/inférieur de 26 à 37 kW	Obere / Untere buchsenslager von 26 bis 37 kW	Cojinete de casquillo superior- inferior de 26 a 37 kW	Rolamento em bucha superior-inferior de 26 a 37 kW
15	Parasabbia	Sand guard	Anti-sable	Sandschutz	Protección de arena	Protecção Vedante
16	Valvola sfiato	Relief valve	Soupape de Purge	Ablassventil	Valvula de purga	Válvula
17	Tappo riempimento	Filling plug	Bouchon de remplissage	Füllstoff-Stecker	Tapón de llenado	Bujão
18	Guarnizione pressacavo	Cable gland gasket	Joint de press étoupe	Kabelverschraubungen Dichtung	Junta sujetacable	O-ring pressacabo
19	Kit reggispinta completo da 26 a 37 kW	Thrust bearing kit complete from 26 to 37 kW	Kit palier de butée complet de 26 à 37 kW	Drucklagerbausatz komplet von 26 bis 37 kW	Kit cojinete de empuje completo de 26 a 37 kW	Kit Apoios completo de 26 a 37 kW
*	Solo per riparazioni	For repair only	Pour réparations seulement	Nur für die Reparatur	Sólo para la reparación	Para o reparo unicamente
N.	Beschrijving nl	Περιγραφή el	Açıklama tr	Kuvaus fi	Описание ru	Opis pl
1	Kabelklem set	Σετ σφικτήρων καλωδίων	Kablo bez kiti	Kaapelinpuristinsarja	Комплект каб.уплотнителей	Zestaw mocowania kabla
2	Complete druklager set van 4 tot 22 kW	Πλήρες σετ ωπτικού ρουλεμάν 4 - 22 kW	Komple ayar pulu kiti 4 - 22 kW	Täydellinen painelaakerisarja 4-22 kW	Полный комплект упорного подшипника от 4 до 22 кВт	Kompletny zestaw łożyska ciernego od 4 do 22 kW
3	Kit met dichtingen	Σετ τοιμοχών	Conta kiti	Tiivistesarja	КОМПЛЕКТ прокладок	ZESTAW Uszczelek
4	Kit met schroeven	Σετ βιδών	Vida kiti	Ruuvisarja	КОМПЛЕКТ винтов	ZESTAW wkręty
5	Mechanische afdichting/Flens	Σετ ανοχών στεγανότητας/Φλάντζας	Mekanik conta / Flanş	Tiivistesarja / Laippa	КОМПЛЕКТ прокладок/фланца	Zestaw łożysko tulejowe
6	Stator compleet	Πλήρης στάτορας	Statör tamamı	Täydellinen staattori	Статор полный	Stator
7	Onderste steun	Κάτω φορέας	Alt segman braket	Alatuki	Нижняя опора	Dolny wspornik
8	Afstandsstuk	Αποστάσεων	Ara halkası	Välilevy	Распорная	Część dystansowa
9	Bovenste steun	Επάνω φορέας	Ust braket	Ylätuki	Верхняя опора	Górny wspornik
10	Steun druklager kit	Φορέας σετ ωπτικού ρουλεμάν	Bindirme yatağı kiti desteği	Painelaakerisarjan tuki	Опора комплекта упорного подшипника	Wspornik zestawu łożyska wzdużnego
11	Bedekking onderkant de membraan	Κάλυμμα διαφράγματος	Zeminlemek kapağı Diyafram	Alaosan, kalvo	диафрагма основания крышка	Dolna pokrywa Ko nierz
12	Rotoras	Άξονας στροφείου	Rotor mili	Roottorin akseli	ось ротора	Wałek (z rotorem)
13	Bovenste/Onderste Bus van 4 tot 22 kW	Κορυφή / Κάτω ένασφαιρου ρουλεμάν 4 - 22 kW	Burç yatağı üstteki / alt 4-22 kW	Holkilaakeri ylempi / alempi 4-22 kW	Подшипник со втулкой верхне-низко от 4 до 22 кВт	łożysko tulejowe wyższy / obniżać od 4 do 22 kW
14	Bovenste/Onderste Bus van 26 tot 37 kW	Κορυφή / Κάτω ένασφαιρου ρουλεμάν 26 - 37 kW	Burç yatağı üstteki / alt 26-37 kW	Holkilaakeri ylempi / alempi 26-37 kW	Подшипник со втулкой верхне-низко от 26 до 37 кВт	łożysko tulejowe wyższy / obniżać od 26 do 37 kW
15	Beschermkap	Προστατευτικό άμμου	Kum sizintisi önleme	Hiekkasuoja	Защита от песка	Ochrona przeciw-piaskowa
16	Ontluchtingsventiel	Βαλβίδα εξαερισμού	Tahliye valfi	Paineenrajoitusventtiili	Редукционный клапан	Zawór odpowietrzający
17	Vulplug	Πώμα πλήρωσης	Şarj fişi	Täyttötulppa	Пробка заполнения	Korek zalewowy
18	Kabelklem pakking	Περίβλημα σφικτήρα καλωδίων	Kablo bez contası	Kaapelinpuristimen tiiviste	Прокладка уплотнителей кабеля	Uszczelniaç kabla
19	Complete druklager set van 26 tot 37 kW	Πλήρες σετ ωπτικού ρουλεμάν 26 - 37 kW	Komple ayar pulu kiti 26 - 37 kW	Täydellinen painelaakerisarja 26-37 kW	Полный комплект упорного подшипника от 26 до 37 кВт	Kompletny zestaw łożyska ciernego od 26 do 37 kW
*	Alleen voor reparatie	επισκευή μόνο	Için tamir sadece	Korjattavaksi vain	для ремонт только	Do naprawy tylko

L6W/A 6" Submersible Motors

L6W	40T386/A	55T386/A	75T386/A	93T386/A	110T386/A	130T386/A	150T386/A	185T386/A	220T386/A	
3Ph 380V 60Hz DOL	code 507050310	507050320	507050330	507050340	507050350	507050360	507050370	507050380	507050390	
L6W	55T386/A	75T386/A	93T386/A	110T386/A	130T386/A	150T386/A	185T386/A	220T386/A		
3Ph 380/660V 60Hz SD	code -	507050325	507050335		507050355	507050365	507050375	507050385	507050395	
	kW	4,0	5,5	7,5	9,3	11	13	15	18,5	22

1	Kit cable glands EPDM	5KL30ABC	All models
*2	Thrust bearing kit 4 - 22 kW	5KL41AAC	All models
*3	Seals kit NBR	5KL02AAD	All models
4	Screws kit	5KL40AAD	All models
*5	Kit MECH D28 / Flange CER/CARB/FPM-A304	5KL01AAG	All models
7	Lower support cast iron	561450010	All models
8	Spacer	562550090	All models
9	Upper bracket DOL	561450230	All models
	Upper bracket SD	561450350	All models
10	Thrust bearing bracket	561450050	All models
11	Bottom cover	564250010	All models
*13	Upper/lower bush bearing 4 - 22 kW	562590010	All models, N. 2
*14	Upper/lower bush bearing 26 - 37 kW	-	All models
15	Sand guard EPDM	168561020	All models
16	Release valve A316 NBR	549300070	All models
17	Filling plug A316 EPDM	540500010	All models
18	Cable gland gasket EPDM	568560290	All models
19	Thrust bearing kit 26 - 37 kW	-	All models
(*)	Bush bearings chromate	5KL35AAD	All models FOR REPAIR ONLY

6	Stator assy DOL	code 540661010	540661020	540661030	540661040	540661050	540661060	540661070	540661080	540661090
	Stator assy SD	-	540661025	540661035		540661055	540661065	540661075	540661085	540661095
12	Rotor shaft A420	code 555082010	555082020	555082030	555082040	555082050	555082060	555082070	555082080	555082090

PVC Winding Wire										
380-3-60 DOL										
Wire Code	573325806	573325808	573325809	573325810	573325811	573325813	573325814	573325811	573325810	
Wire Type	D1,0/1,7	D1,2/1,9	D1,3/2,1	D1,4/2,2	D1,5/2,3	D1,7/2,5	D1,8/2,6	D1,5/2,3	D1,4/2,2	
Tot wire need [m]	250	220	195	200	180	165	175	255	295	
380/660-3-60 SD										
Wire Code	-	573325803	573325805		573325807	573325808	573325811	573325811	573325812	
Wire Type	-	D0,7/1,4	D0,9/1,6		D1,0/1,8	D1,2/1,9	D1,5/2,3	D1,5/2,3	D1,6/2,4	
Tot wire need [m]	-	380	340		305	285	255	250	310	
In case of order, the quantity delivered will depend from the coil currently available.										

Flat Power cable H07BB-F ACS approved										
380-3-60 DOL										
Cable code	572850960	572850960	572850960	572850960	572850960	572850960	572850960	572850960	572850962	572850962
Section (mm2)	4G4	4G4	4G4	4G4	4G4	4G4	4G4	4G4	4G6	4G6
380/660-3-60 SD										
Cable code	-	572850910	572850910		572850910	572850910	572850910	572850910	572850910	572850910
Section (mm2)	-	3X4	3X4		3X4	3X4	3X4	3X4	3X4	3X4
Cable code	-	572850960	572850960		572850960	572850960	572850960	572850960	572850960	572850960
Section (mm2)	-	4G4	4G4		4G4	4G4	4G4	4G4	4G4	4G4
Codes are referred to 1 m of cable										

Special Versions			
1	Kit cable glands FPM	5KL30ABD	All models
*3	Seals kit EPDM	5KL02AAE	All models
	Seals kit FPM	5KL02AAF	All models
*5	Kit MECH D28 / Flange SIC/SIC/NBR	5KL01AAH	All models
	Kit MECH D28 / Flange SIC/SIC/FPM	5KL01AAK	All models
15	Sand guard FPM	168561021	All models
16	Release valve A316 FPM	549300071	All models
17	Plug for PT100	540500020	All models
18	Cable gland gasket FPM	568560291	All models

(*) = WARNING. These parts replacement requires an Authorized Service.

* Recommended spare parts - Parti di ricambio consigliate
* Pièces détachées conseillées - Empfohlene Ersatzteile

L6W_A 6 Dec07 EdD

L6W/A 6" Submersible Motors

L6W		260T386/A	300T386/A	370T386/A
3Ph 380V 60Hz DOL	code	507050400	507050410	507050420
L6W		260T386/A	300T386/A	370T386/A
3Ph 380/660V 60Hz SD	code	507050405	507050415	507050425
	kW	26	30	37

1	Kit cable glands EPDM	5KL30ABC	All models	
	Kit cable glands EPDM from BEGIN 2010	5KL30ABK	All models cable 4G10	
2	Thrust bearing kit 4 - 22 kW	-	All models	
*3	Seals kit NBR	5KL02AAD	All models	
4	Screws kit	5KL40AAD	All models	
*5	Kit MECH D28 / Flange CER/CARB/FPM-A30	5KL01AAG	All models	
7	Lower support cast iron	561450220	All models	
8	Spacer	562550090	All models	
9	Upper bracket DOL	561450240	All models	
	Upper bracket SD	561450360	All models	
10	Thrust bearing bracket	561450050	All models	
11	Bottom cover	564250010	All models	
*13	Upper/lower bush bearing 4 - 22 kW	-	All models	
*14	Upper/lower bush bearing 26 - 37 kW	562590060	All models, N. 4	
15	Sand guard EPDM	168561020	All models	
16	Release valve A316 NBR	549300070	All models	
17	Filling plug A316 EPDM	540500010	All models	
18	Cable gland gasket EPDM	568560290	All models	
*19	Thrust bearing kit 26 - 37 kW	5KL41AAD	All models	
(*)	Bush bearings chromate	5KL35AAE	FOR REPAIR ONLY	

6	Stator assy DOL	code 540661100	540661110	540643970
	Stator assy SD	code 540661105	540661115	540643975
12	Rotor shaft A420	code 555082100	555082110	555082120

PVC Winding Wire			
380-3-60 DOL			
Wire Code	573325813	573325814	573325846
Wire Type	D1,7/2,5	D1,8/2,6	D2,0/3,1
Tot wire need [m]	250	230	245*
380/660-3-60 SD			
Wire Code	573325813	573325814	573325846
Wire Type	D1,7/2,5	D1,8/2,6	D2,0/3,1
Tot wire need [m]	250	230	305*
* Wire HT/HD instead of PVC			
In case of order, the quantity delivered will depend from the coil currently available.			

Flat Power cable H07BB-F ACS approved			
380-3-60 DOL			
Cable code	572850964	572850964	572850964
Section (mm2)	4G10	4G10	4G10
380/660-3-60 SD			
Cable code	572850910	572850910	572850910
Section (mm2)	3X4	3X4	3X4
Cable code	572850960	572850960	572850960
Section (mm2)	4G4	4G4	4G4
Codes are referred to 1 m of cable			

Special Versions			
1	Kit cable glands FPM	5KL30ABD	All models
	Kit cable glands FPM from BEGIN 2010	5KL30ABL	All models cable 4G10
*3	Seals kit EPDM	5KL02AAE	All models
	Seals kit FPM	5KL02AAF	All models
*5	Kit MECH D28 / Flange SIC/SIC/NBR	5KL01AAH	All models
	Kit MECH D28 / Flange SIC/SIC/FPM	5KL01AAK	All models
15	Sand guard FPM	168561021	All models
16	Release valve A316 FPM	549300071	All models
17	Plug for PT100	540500020	All models
18	Cable gland gasket FPM	568560291	All models

(*) = WARNING. These parts replacement requires an Authorized Service.

* Recommended spare parts - Parti di ricambio consigliate
* Pièces détachées conseillées - Empfohlene Ersatzteile

L6W_A 6 Dec07 EdD

L6W/A 6" Submersible Motors

L6W		40T236/A	55T236/A	75T236/A	93T236/A	110T236/A	130T236/A	150T236/A	185T236/A	220T236/A
3Ph 230V 60Hz DOL	code	507050311	507050321	507050331	507050341	507050351	-	507050371	507050381	507050391
L6W		40T236/A	55T236/A	75T236/A	93T236/A	110T236/A	130T236/A	150T236/A	185T236/A	220T236/A
3Ph 230/380V 60Hz SD	code	-	-	507050336						
	kW	4,0	5,5	7,5	9,3	11	13	15	18,5	22

1	Kit cable glands EPDM	5KL30ABC	All models							
*2	Thrust bearing kit 4 - 22 kW	5KL41AAC	All models							
*3	Seals kit NBR	5KL02AAD	All models							
4	Screws kit	5KL40AAD	All models							
*5	Kit MECH D28 / Flange CER/CARB/FPM-A304	5KL01AAG	All models							
7	Lower support cast iron	561450010	All models							
8	Spacer	562550090	All models							
9	Upper bracket DOL	561450230	All models							
	Upper bracket SD	561450350	All models							
10	Thrust bearing bracket	561450050	All models							
11	Bottom cover	564250010	All models							
*13	Upper/lower bush bearing 4 - 22 kW	562590010	All models, N. 2							
*14	Upper/lower bush bearing 26 - 37 kW	-	All models							
15	Sand guard EPDM	168561020	All models							
16	Release valve A316 NBR	549300070	All models							
17	Filling plug A316 EPDM	540500010	All models							
18	Cable gland gasket EPDM	568560290	All models							
19	Thrust bearing kit 26 - 37 kW	-	All models							
(*)	Bush bearings chromate	5KL35AAD	All models	FOR REPAIR ONLY						

6	Stator assy DOL	code	540661011	540661021	540661031	540661041	540661051	-	540661071	540661081	540661091
	Stator assy SD			-	540661036	-	-	-	-	-	-
12	Rotor shaft A420	code	555082010	555082020	555082030	555082040	555082050	555082060	555082070	555082080	555082090

PVC Winding Wire										
230-3-60 DOL										
Wire Code	573325806	573325808	573325809	573325810	573325811	-	573325812	573325809	573325810	
Wire Type	D1,0/1,7	D1,2/1,9	D1,3/2,1	D1,4/2,2	D1,5/2,3	-	D1,6/2,4	D1,3/2,1	D1,4/2,2	
Tot wire need [m]	245	220	195	200	185	-	205	300	295	
230/380-3-60 SD										
Wire Code	-	-	573325809							
Wire Type	-	-	D1,3/2,1							
Tot wire need [m]	-	-	205							
In case of order, the quantity delivered will depend from the coil currently available.										

Flat Power cable H07BB-F ACS approved										
230-3-60 DOL										
Cable code	572850960	572850960	572850960	572850960	572850960		572850964	572850964	572850964	
Section (mm2)	4G4	4G4	4G4	4G4	4G4		4G10	4G10	4G10	
230/380-3-60 SD										
Cable code	-	-	572850910							
Section (mm2)	-	-	3X4							
Cable code	-	-	572850960							
Section (mm2)	-	-	4G4							
Codes are referred to 1 m of cable										

Special Versions										
1	Kit cable glands FPM	5KL30ABD	All models							
*3	Seals kit EPDM	5KL02AAE	All models							
	Seals kit FPM	5KL02AAF	All models							
*5	Kit MECH D28 / Flange SIC/SIC/NBR	5KL01AAH	All models							
	Kit MECH D28 / Flange SIC/SIC/FPM	5KL01AAK	All models							
15	Sand guard FPM	168561021	All models							
16	Release valve A316 FPM	549300071	All models							
17	Plug for PT100	540500020	All models							
18	Cable gland gasket FPM	568560291	All models							

(*) = WARNING. These parts replacement requires an Authorized Service.

* Recommended spare parts - Parti di ricambio consigliate
* Pièces détachées conseillées - Empfohlene Ersatzteile

L6W/A 6" Submersible Motors

L6W		260T236/A	300T236/A	370T236/A
3Ph 230V 60Hz DOL	code			
L6W		260T236/A	300T236/A	370T236/A
3Ph 220/380V 50Hz SD	code	507050406		
	kW	26	30	37

1	Kit cable glands EPDM	5KL30ABC	All models
	Kit cable glands EPDM from BEGIN 2010	5KL30ABK	All models cable 4G10
2	Thrust bearing kit 4 - 22 kW	-	All models
*3	Seals kit NBR	5KL02AAD	All models
4	Screws kit	5KL40AAD	All models
*5	Kit MECH D28 / Flange CER/CARB/NBR-A30	5KL01AAG	All models
7	Lower support cast iron	561450220	All models
8	Spacer	562550090	All models
9	Upper bracket DOL	561450240	All models
	Upper bracket SD	561450360	All models
10	Thrust bearing bracket	561450050	All models
11	Bottom cover	564250010	All models
*13	Upper/lower bush bearing 4 - 22 kW	-	All models
*14	Upper/lower bush bearing 26 - 37 kW	562590060	All models, N. 4
15	Sand guard EPDM	168561020	All models
16	Release valve A316 NBR	549300070	All models
17	Filling plug A316 EPDM	540500010	All models
18	Cable gland gasket EPDM	568560290	All models
*19	Thrust bearing kit 26 - 37 kW	5KL41AAD	All models
(*)	Bush bearings chromate	5KL35AAE	FOR REPAIR ONLY

6	Stator assy DOL	code	
	Stator assy SD	540661106	
12	Rotor shaft A420	code	555082100

PVC Winding Wire			
		230-3-60 DOL	
Wire Code			
Wire Type			
Tot wire need [m]			
		230/380-3-60 SD	
Wire Code		573325812	
Wire Type		D1,6/2,4	
Tot wire need [m]		285	
		* Wire HT/HD instead of PVC	
In case of order, the quantity delivered will depend from the coil currently available.			

Flat Power cable H07BB-F ACS approved			
		230-3-60 DOL	
Cable code			
Section (mm ²)			
		230/380-3-60 SD	
Cable code		572850914	
Section (mm ²)		3X10	
Cable code		572850964	
Section (mm ²)		4G10	
Codes are referred to 1 m of cable			

Special Versions			
1	Kit cable glands FPM	5KL30ABD	All models
	Kit cable glands FPM from BEGIN 2010	5KL30ABL	All models cable 4G10
*3	Seals kit EPDM	5KL02AAE	All models
	Seals kit FPM	5KL02AAF	All models
*5	Kit MECH D28 / Flange SIC/SIC/NBR	5KL01AAH	All models
	Kit MECH D28 / Flange SIC/SIC/FPM	5KL01AAK	All models
15	Sand guard FPM	168561021	All models
16	Release valve A316 FPM	549300071	All models
17	Plug for PT100	540500020	All models
18	Cable gland gasket FPM	568560291	All models

(*) = WARNING. These parts replacement requires an Authorized Service.

* Recommended spare parts - Parti di ricambio consigliate
* Pièces détachées conseillées - Empfohlene Ersatzteile

L6W/A HT 6" Submersible Motors

L6W 3Ph 380V 60Hz DOL	code	40T386/A	55T386/A	75T386/A	93T386/A	110T386/A	130T386/A	150T386/A	185T386/A	220T386/A
L6W 3Ph 380/660V 60Hz SD	code	-	55T386/A	75T386/A	93T386/A	110T386/A	130T386/A	150T386/A	185T386/A	220T386/A
	kW	4,0	5,5	7,5	9,3	11	13	15	18,5	22

1	Kit cable glands EPDM	5KL30ABC	All models
*2	Thrust bearing kit 4 - 22 kW	5KL41AAC	All models
*3	Seals kit NBR	5KL02AAD	All models
4	Screws kit	5KL40AAD	All models
*5	Kit MECH D28 / Flange CER/CARB/NBR-A304	5KL01AAG	All models
7	Lower support cast iron	561450010	All models
8	Spacer	562550090	All models
9	Upper bracket DOL	561450230	All models
	Upper bracket SD	561450350	All models
10	Thrust bearing bracket	561450050	All models
11	Bottom cover	564250010	All models
*13	Upper/lower bush bearing 4 - 22 kW	562590010	All models, N. 2
*14	Upper/lower bush bearing 26 - 37 kW	-	All models
15	Sand guard EPDM	168561020	All models
16	Release valve A316 NBR	549300070	All models
17	Filling plug A316 EPDM	540500010	All models
18	Cable gland gasket EPDM	568560290	All models
19	Thrust bearing kit 26 - 37 kW	-	All models
(*)	Bush bearings chromate	5KL35AAD	All models FOR REPAIR ONLY

6	Stator assy DOL	code	54066102B	54066103B	54066104B	54066105B	54066106B	54066107B	54066108B	54066109B	
	Stator assy SD		-	-	-	-	-	-	-	-	
12	Rotor shaft A420	code	555082010	555082020	555082030	555082040	555082050	555082060	555082070	555082080	555082090

PVC Winding Wire										
		380-3-60 DOL								
Wire Code		573325835	573325837	573325838	573325839	573325841	573325842	573325837	573325838	
Wire Type		D0,9/1,9	D1,1/2,1	D1,2/2,2	D1,3/2,3	D1,5/2,5	D1,6/2,6	D1,1/2,1	D1,2/2,2	
Tot wire need [m]		225	205	200	200	175	180	305	305	
		380/660-3-60 SD								
Wire Code		-	-	-	-	-	-	-	-	
Wire Type		-	-	-	-	-	-	-	-	
Tot wire need [m]		-	-	-	-	-	-	-	-	
In case of order, the quantity delivered will depend from the coil currently available.										

Flat Power cable H07BB-F ACS approved										
		380-3-60 DOL								
Cable code		572850960	572850960	572850960		572850960	572850960	572850960	572850960	572850962
Section (mm2)		4G4	4G4	4G4		4G4	4G4	4G4	4G4	4G6
		380/660-3-60 SD								
Cable code		-	-	-	-	-	-	-	-	-
Section (mm2)		-	-	-	-	-	-	-	-	-
Cable code		-	-	-	-	-	-	-	-	-
Section (mm2)		-	-	-	-	-	-	-	-	-
Codes are referred to 1 m of cable										

Special Versions			
1	Kit cable glands FPM	5KL30ABD	All models
*3	Seals kit EPDM	5KL02AAE	All models
	Seals kit FPM	5KL02AAF	All models
*5	Kit MECH D28 / Flange SIC/SIC/NBR	5KL01AAH	All models
	Kit MECH D28 / Flange SIC/SIC/FPM	5KL01AAK	All models
15	Sand guard FPM	168561021	All models
16	Release valve A316 FPM	549300071	All models
17	Plug for PT100	540500020	All models
18	Cable gland gasket FPM	568560291	All models

(*) = WARNING. These parts replacement requires an Authorized Service.

* Recommended spare parts - Parti di ricambio consigliate
* Pièces détachées conseillées - Empfohlene Ersatzteile

L6W/A 6" Submersible Motors

L6W		260T386/A	300T386/A	370T386/A
3Ph 380V 60Hz DOL	code		507070410	
L6W		260T386/A	300T386/A	370T386/A
3Ph 380/660V 60Hz SD	code			
	kW	26	30	37

1	Kit cable glands EPDM	5KL30ABC	All models	
	Kit cable glands EPDM from BEGIN 2010	5KL30ABK	All models cable 4G10	
2	Thrust bearing kit 4 - 22 kW	-	All models	
*3	Seals kit NBR	5KL02AAD	All models	
4	Screws kit	5KL40AAD	All models	
*5	Kit MECH D28 / Flange CER/CARB/NBR-A30	5KL01AAG	All models	
7	Lower support cast iron	561450220	All models	
8	Spacer	562550090	All models	
9	Upper bracket DOL	561450240	All models	
	Upper bracket SD	561450360	All models	
10	Thrust bearing bracket	561450050	All models	
11	Bottom cover	564250010	All models	
*13	Upper/lower bush bearing 4 - 22 kW	-	All models	
*14	Upper/lower bush bearing 26 - 37 kW	562590060	All models, N. 4	
15	Sand guard EPDM	168561020	All models	
16	Release valve A316 NBR	549300070	All models	
17	Filling plug A316 EPDM	540500010	All models	
18	Cable gland gasket EPDM	568560290	All models	
*19	Thrust bearing kit 26 - 37 kW	5KL41AAD	All models	
(*)	Bush bearings chromate	5KL35AAE	FOR REPAIR ONLY	

6	Stator assy DOL	code		54066111B	
	Stator assy SD				
12	Rotor shaft A420	code	555082100	555082110	555082120

PVC Winding Wire			
		380-3-60 DOL	
Wire Code		573325842	
Wire Type		D1,6/2,6	
Tot wire need [m]		240	
		380/660-3-60 SD	
Wire Code			
Wire Type			
Tot wire need [m]			
* Wire HT/HD instead of PVC			
In case of order, the quantity delivered will depend from the coil currently available.			

Flat Power cable H07BB-F ACS approved			
		380-3-60 DOL	
Cable code		572850964	572850964
Section (mm2)		4G10	4G10
		380/660-3-60 SD	
Cable code		572850910	572850910
Section (mm2)		3X4	3X4
Cable code		572850960	572850960
Section (mm2)		4G4	4G4
Codes are referred to 1 m of cable			

Special Versions			
1	Kit cable glands FPM	5KL30ABD	All models
	Kit cable glands FPM from BEGIN 2010	5KL30ABL	All models cable 4G10
*3	Seals kit EPDM	5KL02AAE	All models
	Seals kit FPM	5KL02AAF	All models
*5	Kit MECH D28 / Flange SIC/SIC/NBR	5KL01AAH	All models
	Kit MECH D28 / Flange SIC/SIC/FPM	5KL01AAK	All models
15	Sand guard FPM	168561021	All models
16	Release valve A316 FPM	549300071	All models
17	Plug for PT100	540500020	All models
18	Cable gland gasket FPM	568560291	All models

(*) = WARNING. These parts replacement requires an Authorized Service.

* Recommended spare parts - Parti di ricambio consigliate
* Pièces détachées conseillées - Empfohlene Ersatzteile

L6W_A_6_Dec07_EdD