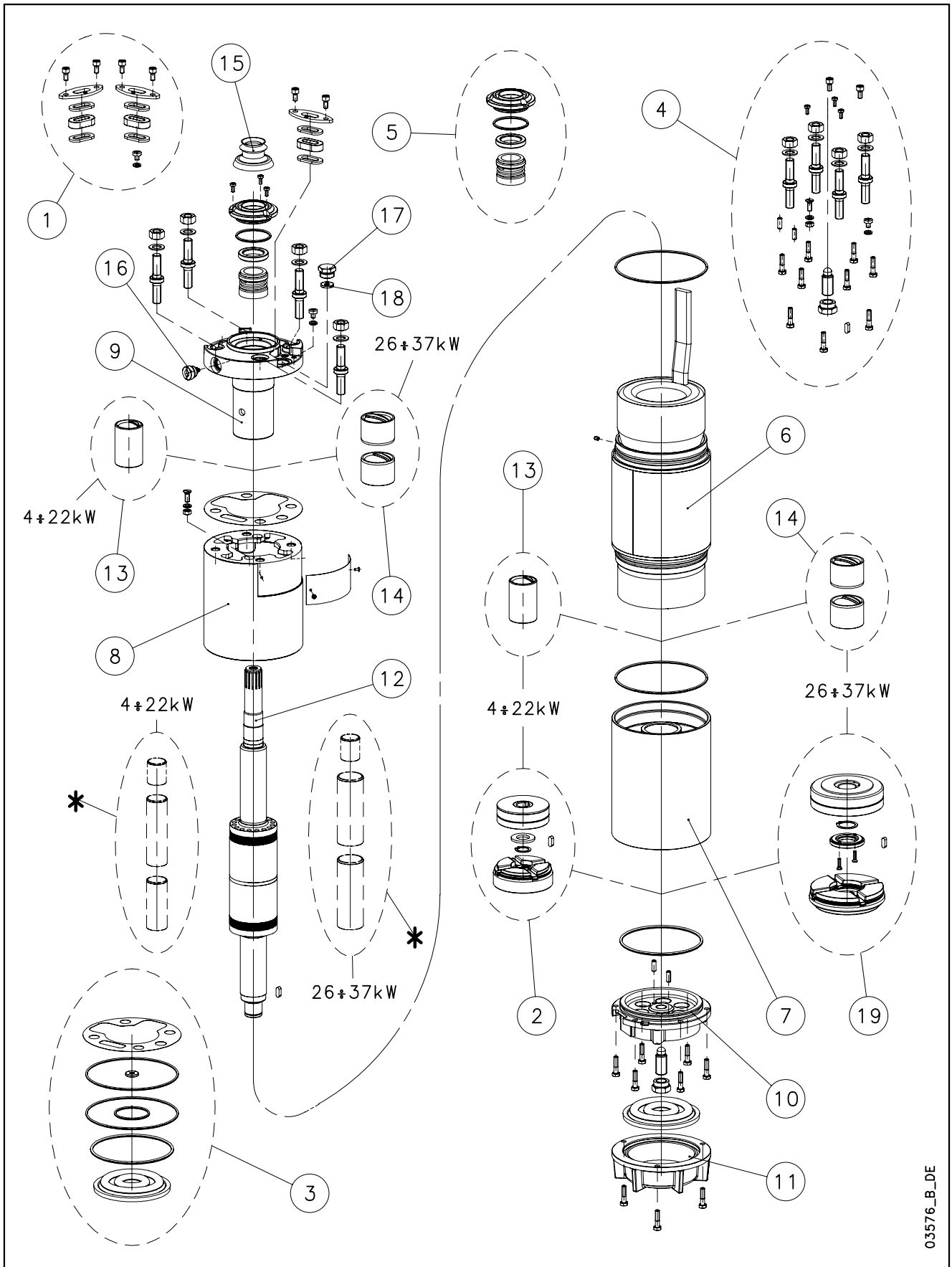


L6W-L6W HT/A - CP6W-CP6W HT/A



03576_B_DE

N.	Descrizione it	Description en	Description fr	Beschreibung de	Descripción es	Descrição pt
1	Kit pressacavi	Kit cable glands	Kit press étoupes	Kabelverschraubungensatz	Kit sujetascable	Kit pressacabos
2	Kit reggispinta completo da 4 a 22 kW	Thrust bearing kit complete from 4 to 22 kW	Kit palier de butée complet de 4 à 22 kW	Drucklagerbausatz komplet von 4 bis 22 kW	Kit cojinete de empuje completo de 4 a 22 kW	Kit Apoios completo de 4 a 22 kW
3	Kit guarnizioni	Seals kit	Kit Garnitures	Bausatz Dichtungen	Kit juntas	Kit guarnições
4	Kit Viterie	Screws kit	Kit Visserie	Bausatz Schrauben	Kit tornillos	Kit parafusos
5	Kit tenuta/Flangia	Kit seals / Flange	Kit garnitures / Bride	Bausatz dichtungen / Flansch	Kit juntas / Brida	Kit Empanque/Flange
6	Statore completo	Stator assy	Stator complet	Stator komplet	Estator completo	Estator complet
7	Supporto inferiore	Lower support	Support inférieur	Untere Lagerung	Soporte inferior	Suporte inferior
8	Distanziale	Spacer	Entretoise	Distanzstück	Distanciador	Distanciador
9	Supporto superiore	Upper bracket	Support supérieur	Obere Lagerung	Soporte superior	Suporte superior
10	Supporto kit reggispinta	Thrust bearing bracket kit	Support kit palier de butée	Drucklagergehäuse	Soporte kit cojinete de empuje	Suporte Kit Apoios
11	Fondello diaframma	Bottom cover diaphragm	Couvercle inférieur soufflet	Untere Abdeckung Blasebalg	Tapa inferior de sujeta	Tampa inferior do fole
12	Albero rotore	Rotor shaft	Arbre rotor	Rotorwelle	Árbol rotor	Veio rotor
13	Boccola cuscinetto sup./inf. da 4 a 22kW	Upper/lower bush bearing from 4 to 22 kW	Roulement à douille supérieur/inférieur de 4 à 22 kW	Obere / Untere buchsenslager von 4 bis 22 kW	Cojinete de casquillo superior -inferior de 4 a 22 kW	Rolamento em bucha superior-inferior de 4 a 22 kW
14	Boccola cuscinetto sup./inf. da 26 a 37kW	Upper/lower bush bearing from 26 to 37 kW	Roulement à douille supérieur/inférieur de 26 à 37 kW	Obere / Untere buchsenslager von 26 bis 37 kW	Cojinete de casquillo superior- inferior de 26 a 37 kW	Rolamento em bucha superior-inferior de 26 a 37 kW
15	Parasabbia	Sand guard	Anti-sable	Sandschutz	Protección de arena	Protecção Vedante
16	Valvola sfiato	Relief valve	Soupape de Purge	Ablassventil	Valvula de purga	Válvula
17	Tappo riempimento	Filling plug	Bouchon de remplissage	Füllstoff-Stecker	Tapón de llenado	Bujão
18	Guarnizione pressacavo	Cable gland gasket	Joint de press étoupe	Kabelverschraubungen Dichtung	Junta sujetacable	O-ring pressacabo
19	Kit reggispinta completo da 26 a 37 kW	Thrust bearing kit complete from 26 to 37 kW	Kit palier de butée complet de 26 à 37 kW	Drucklagerbausatz komplet von 26 bis 37 kW	Kit cojinete de empuje completo de 26 a 37 kW	Kit Apoios completo de 26 a 37 kW
*	Solo per riparazioni	For repair only	Pour réparations seulement	Nur für die Reparatur	Sólo para la reparación	Para o reparo unicamente
N.	Beschrijving nl	Περιγραφή el	Açıklama tr	Kuvaus fi	Описание ru	Opis pl
1	Kabelklem set	Σετ σφιγκτήρων καλωδίων	Kablo bez kiti	Kaapelinpuristinsarja	Комплект каб.уплотнителей	Zestaw mocowania kabla
2	Complete druklager set van 4 tot 22 kW	Πλήρες σετ ωπτικού ρουλεμάν 4 - 22 kW	Komple ayar pulu kiti 4 - 22 kW	Täydellinen painelaakerisarja 4-22 kW	Полный комплект упорного подшипника от 4 до 22 кВт	Kompletny zestaw łożyska ciernego od 4 do 22 kW
3	Kit met dichtingen	Σετ τοιμοχών	Conta kiti	Tiivistesarja	КОМПЛЕКТ прокладок	ZESTAW Uszczelek
4	Kit met schroeven	Σετ βιδών	Vida kiti	Ruuvisarja	КОМПЛЕКТ винтов	ZESTAW wkręty
5	Mechanische afdichting/Flens	Σετ ανοχών στεγανότητας/Φλάντζας	Mekanik conta / Flanş	Tiivistesarja / Laippa	КОМПЛЕКТ прокладок/фланца	Zestaw łożysko tulejowe
6	Stator compleet	Πλήρης στάτορας	Statör tamamı	Täydellinen staattori	Статор полный	Stator
7	Onderste steun	Κάτω φορέας	Alt segman braket	Alatuki	Нижняя опора	Dolny wspornik
8	Afstandsstuk	Αποστάσεων	Ara halkası	Välilevy	Распорная	Część dystansowa
9	Bovenste steun	Επάνω φορέας	Ust braket	Ylätuki	Верхняя опора	Górny wspornik
10	Steun druklager kit	Φορέας σετ ωπτικού ρουλεμάν	Bindirme yatađı kiti desteđi	Painelaakerisarjan tuki	Опора комплекта упорного подшипника	Wspornik zestawu łożyska wzduźnego
11	Bedekking onderkant de membraan	Κάλυμμα διαφράγματος	Zeminlemek kapađı Diyafram	Alaosan, kalvo	диафрагма основания крышка	Dolna pokrywa Ko nierz
12	Rotoras	Άξονας στροφείου	Rotor mili	Roottorin akseli	ось ротора	Wałek (z rotorem)
13	Bovenste/Onderste Bus van 4 tot 22 kW	Κορυφή / Κάτω ένασφαιρου ρουλεμάν 4 - 22 kW	Burç yatađı üstteki / alt 4-22 kW	Holkilaakeri ylempi / alempi 4-22 kW	Подшипник со втулкой верхне-низко от 4 до 22 кВт	łożysko tulejowe wyższy / obniżać od 4 do 22 kW
14	Bovenste/Onderste Bus van 26 tot 37 kW	Κορυφή / Κάτω ένασφαιρου ρουλεμάν 26 - 37 kW	Burç yatađı üstteki / alt 26-37 kW	Holkilaakeri ylempi / alempi 26-37 kW	Подшипник со втулкой верхне-низко от 26 до 37 кВт	łożysko tulejowe wyższy / obniżać od 26 do 37 kW
15	Beschermkap	Προστατευτικό άμμου	Kum sizintisi önleme	Hiekkasuoja	Защита от песка	Ochrona przeciw-piaskowa
16	Ontluchtingsventiel	Βαλβίδα εξαερισμού	Tahliye valfi	Paineenrajoitusventtiili	Редукционный клапан	Zawór odpowietrzający
17	Vulplug	Πώμα πλήρωσης	Şarj fişı	Täyttötulppa	Пробка заполнения	Korek zalewowy
18	Kabelklem pakking	Περίβλημα σφιγκτήρα καλωδίων	Kablo bez contası	Kaapelinpuristimen tiiviste	Прокладка уплотнителей кабеля	Uszczelniaç kabla
19	Complete druklager set van 26 tot 37 kW	Πλήρες σετ ωπτικού ρουλεμάν 26 - 37 kW	Komple ayar pulu kiti 26 - 37 kW	Täydellinen painelaakerisarja 26-37 kW	Полный комплект упорного подшипника от 26 до 37 кВт	Kompletny zestaw łożyska ciernego od 26 do 37 kW
*	Alleen voor reparatie	επισκευή μόνο	Için tamir sadece	Korjattavaksi vain	для ремонт только	Do naprawy tylko

L6WN/A 6" Submersible Motors

L6WN 3Ph 380V 60Hz DOL	code	40T386/A	55T386/A	75T386/A	93T386/A	110T386/A	130T386/A	150T386/A	185T386/A	220T386/A
		507051610	507051620	507051630	507051640	507051650	507051660	507051670	507051680	507051690
L6WN 3Ph 380/660V 60Hz SD	code	-	55T386/A	75T386/A	93T386/A	110T386/A	130T386/A	150T386/A	185T386/A	220T386/A
	kW	4	5,5	7,5	9,3	11	13	15	18,5	22

1	Kit cable glands EPDM	5KL30ABE	All models							
*2	Thrust bearing kit 4 - 22 kW	5KL41AAC	All models							
*3	Seals kit NBR	5KL02AAD	All models							
4	Screws kit	5KL40AAE	All models							
*5	Kit MECH D28 / Flange CER/CARB/FPM-A316	5KL01AAL	All models							
7	Lower support cast iron	561400280	All models							
8	Spacer	562500190	All models							
9	Upper bracket DOL / SD	561400340	All models							
10	Thrust bearing bracket	561400400	All models							
11	Bottom cover	564200160	All models							
*13	Upper/lower bush bearing 4 - 22 kW	562590010	All models, N. 2							
*14	Upper/lower bush bearing 26 - 37 kW	-	All models							
15	Sand guard EPDM	168561020	All models							
16	Release valve A316 NBR	549300070	All models							
17	Filling plug A316 EPDM	540500010	All models							
18	Cable gland gasket EPDM	568560290	All models							
19	Thrust bearing kit 26 - 37 kW	-	All models							
(*)	Bush bearings chromate	5KL35AAD	All models FOR REPAIR ONLY							

6	Stator assy DOL	code	540661210	540661220	540661230	540661240	540661250	540661260	540661270	540661280	540661290
	Stator assy SD										
12	Rotor shaft DUPLEX	code	555082310	555082320	555082330	555082340	555082350	555082360	555082370	555082380	555082390

PVC Winding Wire										
380-3-60 DOL										
Wire Code	573325806	573325808	573325809	573325810	573325811	573325813	573325814	573325811	573325810	
Wire Type	D1,0/1,7	D1,2/1,9	D1,3/2,1	D1,4/2,2	D1,5/2,3	D1,7/2,5	D1,8/2,6	D1,5/2,3	D1,4/2,2	
Tot wire need [m]	185	225	205	200	285	175	180	260	305	
380/660-3-60 SD										
Wire Code	-									
Wire Type	-									
Tot wire need [m]	-									
In case of order, the quantity delivered will depend from the coil currently available.										

Flat Power cable H07BB-F ACS approved										
380-3-60 DOL										
Cable code	572850960	572850960	572850960	572850960	572850960	572850960	572850960	572850962	572850962	
Section (mm2)	4G4	4G4	4G4	4G4	4G4	4G4	4G4	4G6	4G6	
380/660-3-60 SD										
Cable code										
Section (mm2)										
Cable code										
Section (mm2)										
Codes are referred to 1 m of cable										

Special Versions			
1	Kit cable glands FPM	5KL30ABF	All models
*3	Seals kit EPDM	5KL02AAE	All models
	Seals kit FPM	5KL02AAF	All models
*5	Kit MECH D28 / Flange SIC/SIC/NBR	5KL01AAM	All models
	Kit MECH D28 / Flange SIC/SIC/FPM	5KL01AAN	All models
15	Sand guard FPM	168561021	All models
16	Release valve A316 FPM	549300071	All models
17	Plug for PT100	540500020	All models
18	Cable gland gasket FPM	568560291	All models

(*) = WARNING. These parts replacement requires an Authorized Service.

* Recommended spare parts - Parti di ricambio consigliate
* Pièces détachées conseillées - Empfohlene Ersatzteile

L6WN/A 6" Submersible Motors

L6WN		260T386/A	300T386/A	370T386/A
3Ph 380V 60Hz DOL	code	507051700	507051710	507051720
L6WN		260T386/A	300T386/A	370T386/A
3Ph 380/660V 60Hz SD	code	-	-	507051725
	kW	26	30	37

1	Kit cable glands EPDM	5KL30ABE	All models	
	Kit cable glands EPDM from BEGIN 2010	5KL30ABM	All models cable 4G10	
2	Thrust bearing kit 4 - 22 kW	-	All models	
*3	Seals kit NBR	5KL02AAD	All models	
4	Screws kit	5KL40AAE	All models	
*5	Kit MECH D28 / Flange CER/CARB/FPM-A304	5KL01AAL	All models	
7	Lower support cast iron	561400310	All models	
8	Spacer	562500190	All models	
9	Upper bracket DOL	561400370	All models	
	Upper bracket SD	561450360	All models	
10	Thrust bearing bracket	561400400	All models	
11	Bottom cover	564200160	All models	
*13	Upper/lower bush bearing 4 - 22 kW	-	All models	
*14	Upper/lower bush bearing 26 - 37 kW	562590060	All models, N. 4	
15	Sand guard EPDM	168561020	All models	
16	Release valve A316 NBR	549300070	All models	
17	Filling plug A316 EPDM	540500010	All models	
18	Cable gland gasket EPDM	568560290	All models	
*19	Thrust bearing kit 26 - 37 kW	5KL41AAD	All models	
(*)	Bush bearings chromate	5KL35AAE	FOR REPAIR ONLY	

6	Stator assy DOL	code	540661300	540661310	540643980
	Stator assy SD				540643985
12	Rotor shaft A420	code	555082400	555082410	555082420

PVC Winding Wire					
380-3-60 DOL					
Wire Code		573325813	573325814	573325846	
Wire Type		D1,7/2,5	D1,8/2,6	D2,0/3,1	
Tot wire need [m]		250	235	255*	
380/660-3-60 SD					
Wire Code				573325846	
Wire Type				D2,0/3,1	
Tot wire need [m]				255*	
* Wire HT/HD instead of PVC					
In case of order, the quantity delivered will depend from the coil currently available.					

Flat Power cable H07BB-F ACS approved					
380-3-60 DOL					
Cable code		572850964	572850964	572850964	
Section (mm2)		4G10	4G10	4G10	
380/660-3-60 SD					
Cable code		572850912	572850914	572850912	
Section (mm2)		3X6	3X10	3X6	
Cable code		572850962	572850964	572850962	
Section (mm2)		4G6	4G10	4G6	
Codes are referred to 1 m of cable					

Special Versions			
1	Kit cable glands FPM	5KL30ABF	All models
	Kit cable glands FPM from BEGIN 2010	5KL30ABN	All models cable 4G10
*3	Seals kit EPDM	5KL02AAE	All models
	Seals kit FPM	5KL02AAF	All models
*5	Kit MECH D28 / Flange SIC/SIC/NBR	5KL01AAM	All models
	Kit MECH D28 / Flange SIC/SIC/FPM	5KL01AAN	All models
15	Sand guard FPM	168561021	All models
16	Release valve A316 FPM	549300071	All models
17	Plug for PT100	540500020	All models
18	Cable gland gasket FPM	568560291	All models

(*) = WARNING. These parts replacement requires an Authorized Service.

* Recommended spare parts - Parti di ricambio consigliate
* Pièces détachées conseillées - Empfohlene Ersatzteile

L6WN/A 6" Submersible Motors

L6WN		2601236/A	3001236/A	3701236/A
3Ph 230V 60Hz DOL	code			
L6WN		2601236/A	3001236/A	3701236/A
3Ph 220/380V 60Hz SD	code	507051696	507051706	
	kW	26	30	37

1	Kit cable glands EPDM	5KL30ABE	All models	
	Kit cable glands EPDM from BEGIN 2010	5KL30ABM	All models cable 4G10	
2	Thrust bearing kit 4 - 22 kW	-	All models	
*3	Seals kit NBR	5KL02AAD	All models	
4	Screws kit	5KL40AAE	All models	
*5	Kit MECH D28 / Flange CER/CARB/FPM-A316	5KL01AAL	All models	
7	Lower support cast iron	561400310	All models	
8	Spacer	562500190	All models	
9	Upper bracket DOL	561400370	All models	
	Upper bracket SD	561450360	All models	
10	Thrust bearing bracket	561400400	All models	
11	Bottom cover	564200160	All models	
*13	Upper/lower bush bearing 4 - 22 kW	-	All models	
*14	Upper/lower bush bearing 26 - 37 kW	562590060	All models, N. 4	
15	Sand guard EPDM	168561020	All models	
16	Release valve A316 NBR	549300070	All models	
17	Filling plug A316 EPDM	540500010	All models	
18	Cable gland gasket EPDM	568560290	All models	
*19	Thrust bearing kit 26 - 37 kW	5KL41AAD	All models	
(*)	Bush bearings chromate	5KL35AAE	FOR REPAIR ONLY	

6	Stator assy DOL	code			
	Stator assy SD		540661296	540661306	
12	Rotor shaft DUPLEX	code	555082400	555082410	555082420

PVC Winding Wire					
230-3-60 DOL					
Wire Code					
Wire Type					
Tot wire need [m]					
220/380-3-60 SD					
Wire Code	573325810	573325812			
Wire Type	D1,4/2,2	D1,6/2,4			
Tot wire need [m]	305	285			
* Wire HT/HD instead of PVC					
In case of order, the quantity delivered will depend from the coil currently available.					

Flat Power cable H07BB-F ACS approved					
230-3-60 DOL					
Cable code					
Section (mm2)					
220/380-3-60 SD					
Cable code	572850912	572850914			
Section (mm2)	3X6	3X10			
Cable code	572850962	572850964			
Section (mm2)	4G6	4G10			
Codes are referred to 1 m of cable					

Special Versions					
1	Kit cable glands FPM	5KL30ABF	All models		
	Kit cable glands FPM from BEGIN 2010	5KL30ABN	All models cable 4G10		
*3	Seals kit EPDM	5KL02AAE	All models		
	Seals kit FPM	5KL02AAF	All models		
*5	Kit MECH D28 / Flange SIC/SIC/NBR	5KL01AAM	All models		
	Kit MECH D28 / Flange SIC/SIC/FPM	5KL01AAN	All models		
15	Sand guard FPM	168561021	All models		
16	Release valve A316 FPM	549300071	All models		
17	Plug for PT100	540500020	All models		
18	Cable gland gasket FPM	568560291	All models		

(*) = WARNING. These parts replacement requires an Authorized Service.

* Recommended spare parts - Parti di ricambio consigliate
* Pièces détachées conseillées - Empfohlene Ersatzteile

L6WN A 6 Mar08 EdC

L6WN/A HT 6" Submersible Motors High Temperature

L6WN	40T386/A	55T386/A	75T386/A	93T386/A	110T386/A	130T386/A	150T386/A	185T386/A	220T386/A	
3Ph 380V 60Hz DOL HT	code 507071620	507071630	507071640	507071650	507071660	507071670	507071680	507071690	507071700	
L6WN	-	55T386/A	75T386/A	93T386/A	110T386/A	130T386/A	150T386/A	185T386/A	185T386/A	
3Ph 380/660V 60Hz SD HT	code								507071706	
	kW	4	5,5	7,5	9,3	11	13	15	18,5	22

1	Kit cable glands EPDM	5KL30ABE	All models
*2	Thrust bearing kit 4 - 22 kW	5KL41AAC	All models
*3	Seals kit NBR	5KL02AAD	All models
4	Screws kit	5KL40AAE	All models
*5	Kit MECH D28 / Flange CER/CARB/FPM-A316	5KL01AAL	All models
7	Lower support cast iron	561400280	All models
8	Spacer	562500190	All models
9	Upper bracket DOL / SD	561400340	All models
10	Thrust bearing bracket	561400400	All models
11	Bottom cover	564200160	All models
*13	Upper/lower bush bearing 4 - 22 kW	562590010	All models, N. 2
*14	Upper/lower bush bearing 26 - 37 kW	-	All models
15	Sand guard EPDM	168561020	All models
16	Release valve A316 NBR	549300070	All models
17	Filling plug A316 EPDM	540500010	All models
18	Cable gland gasket EPDM	568560290	All models
19	Thrust bearing kit 26 - 37 kW	-	All models
(*)	Bush bearings chromate	5KL35AAD	All models FOR REPAIR ONLY

6	Stator assy DOL HT	code 54066122B	54066123B	54066124B	54066125B	54066126B	54066127B	54066128B	54066129B	54066130B
	Stator assy SD HT	-								54066130L
12	Rotor shaft HT DUPLEX	code 555082320	555082330	555082340	555082350	555082360	555082370	555082380	555082390	555082400

HT/HD Winding Wire									
380-3-60 DOL									
Wire Code	573325835	573325837	573325838	573325839	573325841	573325842	573325837	573325838	573325840
Wire Type	D0,9/1,9	D1,1/2,1	D1,2/2,2	D1,3/2,3	D1,5/2,5	D1,6/2,6	D1,1/2,1	D1,2/2,2	D1,4/2,4
Tot wire need [m]	225	205	200	190	175	180	305	305	285
380/660-3-60 SD									
Wire Code									573325840
Wire Type									D1,4/2,4
Tot wire need [m]									285
In case of order, the quantity delivered will depend from the coil currently available.									

Flat Power cable H07BB-F ACS approved									
380-3-60 DOL									
Cable code	572850960	572850960	572850960	572850960	572850960	572850960	572850960	572850962	572850962
Section (mm2)	4G4	4G4	4G4	4G4	4G4	4G4	4G4	4G6	4G6
380/660-3-60 SD									
Cable code									572850914
Section (mm2)									3X10
Cable code									572850964
Section (mm2)									4G10
Codes are referred to 1 m of cable									

Special Versions			
1	Kit cable glands FPM	5KL30ABF	All models
*3	Seals kit EPDM	5KL02AAE	All models
	Seals kit FPM	5KL02AAF	All models
*5	Kit MECH D28 / Flange SIC/SIC/NBR	5KL01AAM	All models
	Kit MECH D28 / Flange SIC/SIC/FPM	5KL01AAN	All models
15	Sand guard FPM	168561021	All models
16	Release valve A316 FPM	549300071	All models
17	Plug for PT100	540500020	All models
18	Cable gland gasket FPM	568560291	All models

(*) = WARNING. These parts replacement requires an Authorized Service.

* Recommended spare parts - Parti di ricambio consigliate
* Pièces détachées conseillées - Empfohlene Ersatzteile

L6WN/A HT 6" Submersible Motors

L6WN		260T386/A	300T386/A	370T386/A
3Ph 380V 60Hz DOL	code	507071710	507071720	-
L6WN		260T386/A	300T386/A	370T386/A
3Ph 380/660V 60Hz SD	code			-
	kW	26	30	37

1	Kit cable glands EPDM	5KL30ABE	All models	
	Kit cable glands EPDM from BEGIN 2010	5KL30ABM	All models cable 4G10	
2	Thrust bearing kit 4 - 22 kW	-	All models	
*3	Seals kit NBR	5KL02AAD	All models	
4	Screws kit	5KL40AAE	All models	
*5	Kit MECH D28 / Flange CER/CARB/NBR-A304	5KL01AAL	All models	
7	Lower support cast iron	561400310	All models	
8	Spacer	562500190	All models	
9	Upper bracket DOL	561400370	All models	
	Upper bracket SD	561450360	All models	
10	Thrust bearing bracket	561400400	All models	
11	Bottom cover	564200160	All models	
*13	Upper/lower bush bearing 4 - 22 kW	-	All models	
*14	Upper/lower bush bearing 26 - 37 kW	562590060	All models, N. 4	
15	Sand guard EPDM	168561020	All models	
16	Release valve A316 NBR	549300070	All models	
17	Filling plug A316 EPDM	540500010	All models	
18	Cable gland gasket EPDM	568560290	All models	
*19	Thrust bearing kit 26 - 37 kW	5KL41AAD	All models	
(*)	Bush bearings chromate	5KL35AAE	FOR REPAIR ONLY	

6	Stator assy DOL	code	54066131B	54064398B
	Stator assy SD			
12	Rotor shaft A420	code	555082410	555082420

Stator P/N 54064398B is no more feasible for new features winding wire

PVC Winding Wire			
380-3-60 DOL			
Wire Code	573325842	573325846	
Wire Type	D1,6/2,6	D2,0/3,1	
Tot wire need [m]	240	255	
380/660-3-60 SD			
Wire Code			
Wire Type			
Tot wire need [m]			
In case of order, the quantity delivered will depend from the coil currently available.			

Flat Power cable H07BB-F ACS approved			
380-3-60 DOL			
Cable code	572850964	572850964	572850964
Section (mm2)	4G10	4G10	4G10
380/660-3-60 SD			
Cable code	572850912	572850914	572850912
Section (mm2)	3X6	3X10	3X6
Cable code	572850962	572850964	572850962
Section (mm2)	4G6	4G10	4G6
Codes are referred to 1 m of cable			

Special Versions			
1	Kit cable glands FPM	5KL30ABF	All models
	Kit cable glands FPM from BEGIN 2010	5KL30ABN	All models cable 4G10
*3	Seals kit EPDM	5KL02AAE	All models
	Seals kit FPM	5KL02AAF	All models
*5	Kit MECH D28 / Flange SIC/SIC/NBR	5KL01AAM	All models
	Kit MECH D28 / Flange SIC/SIC/FPM	5KL01AAN	All models
15	Sand guard FPM	168561021	All models
16	Release valve A316 FPM	549300071	All models
17	Plug for PT100	540500020	All models
18	Cable gland gasket FPM	568560291	All models

(*) = WARNING. These parts replacement requires an Authorized Service.

* Recommended spare parts - Parti di ricambio consigliate
* Pièces détachées conseillées - Empfohlene Ersatzteile

L6WN_A_6_Dec07_EdC

xylem

