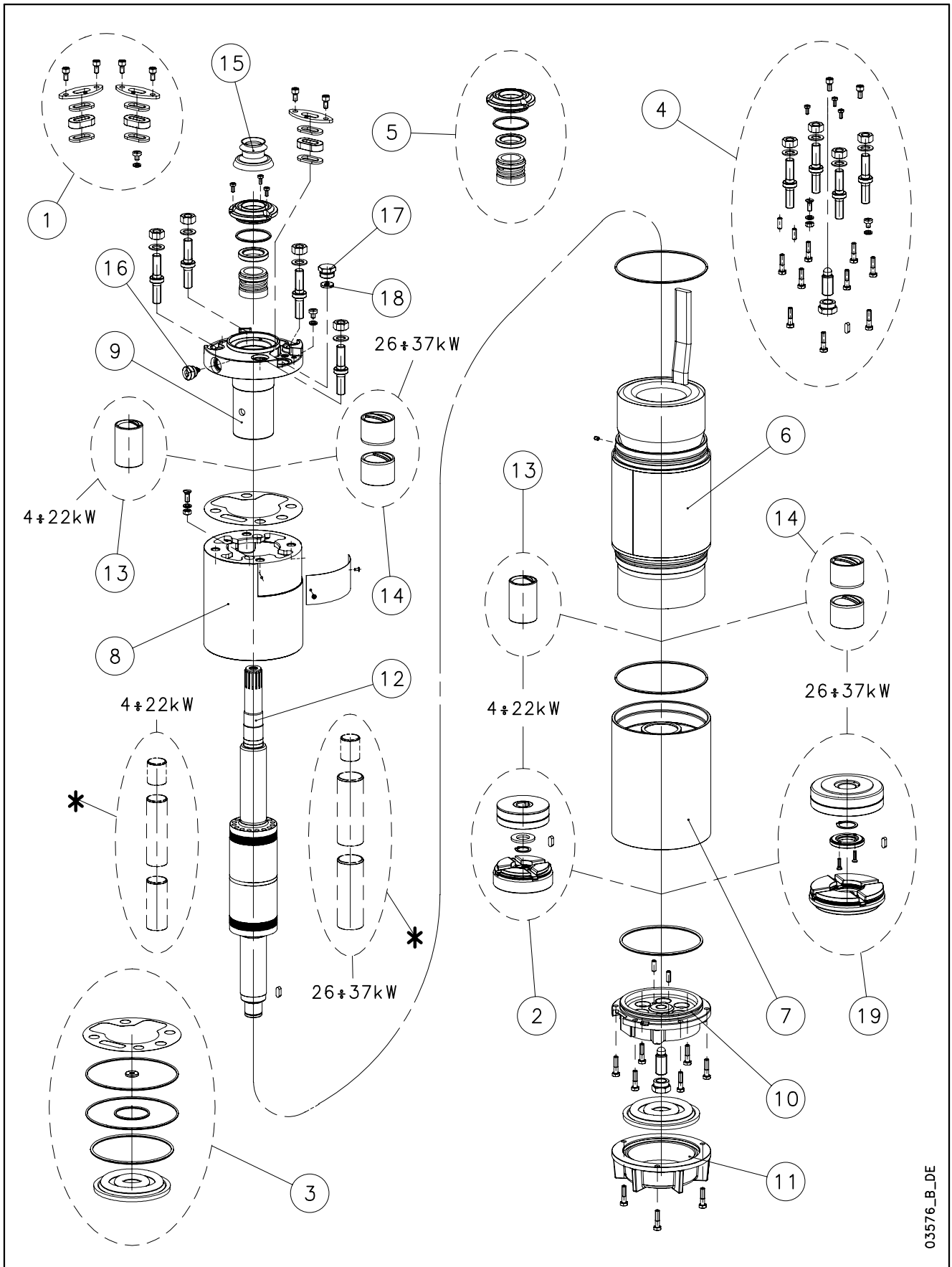


L6W-L6W HT/A - CP6W-CP6W HT/A



03576_B_DE

N.	Descrizione it	Description en	Description fr	Beschreibung de	Descripción es	Descrição pt
1	Kit pressacavi	Kit cable glands	Kit press étoupes	Kabelverschraubungensatz	Kit sujetascable	Kit pressacabos
2	Kit reggispinta completo da 4 a 22 kW	Thrust bearing kit complete from 4 to 22 kW	Kit palier de butée complet de 4 à 22 kW	Drucklagerbausatz komplet von 4 bis 22 kW	Kit cojinete de empuje completo de 4 a 22 kW	Kit Apoios completo de 4 a 22 kW
3	Kit guarnizioni	Seals kit	Kit Garnitures	Bausatz Dichtungen	Kit juntas	Kit guarnições
4	Kit Viterie	Screws kit	Kit Visserie	Bausatz Schrauben	Kit tornillos	Kit parafusos
5	Kit tenuta/Flangia	Kit seals / Flange	Kit garnitures / Bride	Bausatz dichtungen / Flansch	Kit juntas / Brida	Kit Empanque/Flange
6	Statore completo	Stator assy	Stator complet	Stator komplet	Estator completo	Estator complet
7	Supporto inferiore	Lower support	Support inférieur	Untere Lagerung	Soporte inferior	Suporte inferior
8	Distanziale	Spacer	Entretoise	Distanzstück	Distanciador	Distanciador
9	Supporto superiore	Upper bracket	Support supérieur	Obere Lagerung	Soporte superior	Suporte superior
10	Supporto kit reggispinta	Thrust bearing bracket kit	Support kit palier de butée	Drucklagergehäuse	Soporte kit cojinete de empuje	Suporte Kit Apoios
11	Fondello diaframma	Bottom cover diaphragm	Couvercle inférieur soufflet	Untere Abdeckung Blasebalg	Tapa inferior de sujeta	Tampa inferior do fole
12	Albero rotore	Rotor shaft	Arbre rotor	Rotorwelle	Árbol rotor	Veio rotor
13	Boccola cuscinetto sup./inf. da 4 a 22kW	Upper/lower bush bearing from 4 to 22 kW	Roulement à douille supérieur/inférieur de 4 à 22 kW	Obere / Untere buchsenslager von 4 bis 22 kW	Cojinete de casquillo superior -inferior de 4 a 22 kW	Rolamento em bucha superior-inferior de 4 a 22 kW
14	Boccola cuscinetto sup./inf. da 26 a 37kW	Upper/lower bush bearing from 26 to 37 kW	Roulement à douille supérieur/inférieur de 26 à 37 kW	Obere / Untere buchsenslager von 26 bis 37 kW	Cojinete de casquillo superior- inferior de 26 a 37 kW	Rolamento em bucha superior-inferior de 26 a 37 kW
15	Parasabbia	Sand guard	Anti-sable	Sandschutz	Protección de arena	Protecção Vedante
16	Valvola sfiato	Relief valve	Soupape de Purge	Ablassventil	Valvula de purga	Válvula
17	Tappo riempimento	Filling plug	Bouchon de remplissage	Füllstoff-Stecker	Tapón de llenado	Bujão
18	Guarnizione pressacavo	Cable gland gasket	Joint de press étoupe	Kabelverschraubungen Dichtung	Junta sujetacable	O-ring pressacabo
19	Kit reggispinta completo da 26 a 37 kW	Thrust bearing kit complete from 26 to 37 kW	Kit palier de butée complet de 26 à 37 kW	Drucklagerbausatz komplet von 26 bis 37 kW	Kit cojinete de empuje completo de 26 a 37 kW	Kit Apoios completo de 26 a 37 kW
*	Solo per riparazioni	For repair only	Pour réparations seulement	Nur für die Reparatur	Sólo para la reparación	Para o reparo unicamente
N.	Beschrijving nl	Περιγραφή el	Açıklama tr	Kuvaus fi	Описание ru	Opis pl
1	Kabelklem set	Σετ σφικτήρων καλωδίων	Kablo bez kiti	Kaapelinpuristinsarja	Комплект каб.уплотнителей	Zestaw mocowania kabla
2	Complete druklager set van 4 tot 22 kW	Πλήρες σετ ωπτικού ρουλεμάν 4 - 22 kW	Komple ayar pulu kiti 4 - 22 kW	Täydellinen painelaakerisarja 4-22 kW	Полный комплект упорного подшипника от 4 до 22 кВт	Kompletny zestaw łożyska ciernego od 4 do 22 kW
3	Kit met dichtingen	Σετ τοιμοχών	Conta kiti	Tiivistesarja	КОМПЛЕКТ прокладок	ZESTAW Uszczelek
4	Kit met schroeven	Σετ βιδών	Vida kiti	Ruuvisarja	КОМПЛЕКТ винтов	ZESTAW wkręty
5	Mechanische afdichting/Flens	Σετ ανοχών στεγανότητας/Φλάντζας	Mekanik conta / Flanş	Tiivistesarja / Laippa	КОМПЛЕКТ прокладок/фланца	Zestaw łożysko tulejowe
6	Stator compleet	Πλήρης στάτορας	Statör tamamı	Täydellinen staattori	Статор полный	Stator
7	Onderste steun	Κάτω φορέας	Alt segman braket	Alatuki	Нижняя опора	Dolny wspornik
8	Afstandsstuk	Αποστάσεων	Ara halkası	Välilevy	Распорная	Część dystansowa
9	Bovenste steun	Επάνω φορέας	Ust braket	Ylätuki	Верхняя опора	Górny wspornik
10	Steun druklager kit	Φορέας σετ ωπτικού ρουλεμάν	Bindirme yatađı kiti desteđi	Painelaakerisarjan tuki	Опора комплекта упорного подшипника	Wspornik zestawu łożyska wzduźnego
11	Bedekking onderkant de membraan	Κάλυμμα διαφράγματος	Zeminlemek kapađı Diyafram	Alaosan, kalvo	диафрагма основания крышка	Dolna pokrywa Ko nierz
12	Rotoras	Άξονας στροφείου	Rotor mili	Roottorin akseli	ось ротора	Wałek (z rotorem)
13	Bovenste/Onderste Bus van 4 tot 22 kW	Κορυφή / Κάτω ένασφαιρου ρουλεμάν 4 - 22 kW	Burç yatađı üstteki / alt 4-22 kW	Holkilaakeri ylempi / alempi 4-22 kW	Подшипник со втулкой верхне-низко от 4 до 22 кВт	łożysko tulejowe wyższy / obniżać od 4 do 22 kW
14	Bovenste/Onderste Bus van 26 tot 37 kW	Κορυφή / Κάτω ένασφαιρου ρουλεμάν 26 - 37 kW	Burç yatađı üstteki / alt 26-37 kW	Holkilaakeri ylempi / alempi 26-37 kW	Подшипник со втулкой верхне-низко от 26 до 37 кВт	łożysko tulejowe wyższy / obniżać od 26 do 37 kW
15	Beschermkap	Προστατευτικό άμμου	Kum sizintisi önleme	Hiekkasuoja	Защита от песка	Ochrona przeciw-piaskowa
16	Ontluchtingsventiel	Βαλβίδα εξαερισμού	Tahliye valfi	Paineenrajoitusventtiili	Редукционный клапан	Zawór odpowietrzający
17	Vulplug	Πώμα πλήρωσης	Şarj fişi	Täyttötulppa	Пробка заполнения	Korek zalewowy
18	Kabelklem pakking	Περίβλημα σφικτήρα καλωδίων	Kablo bez contası	Kaapelinpuristimen tiiviste	Прокладка уплотнителей кабеля	Uszczelniaç kabla
19	Complete druklager set van 26 tot 37 kW	Πλήρες σετ ωπτικού ρουλεμάν 26 - 37 kW	Komple ayar pulu kiti 26 - 37 kW	Täydellinen painelaakerisarja 26-37 kW	Полный комплект упорного подшипника от 26 до 37 кВт	Kompletny zestaw łożyska ciernego od 26 do 37 kW
*	Alleen voor reparatie	επισκευή μόνο	Için tamir sadece	Korjattavaksi vain	для ремонт только	Do naprawy tylko

CP6W/B 6" Submersible Motors

CP6W 3Ph 230V 60Hz DOL	code	260T236/B	300T236/B	370T236/B
CP6W 3Ph 220/380V 50Hz SD	code	260T236/B	300T236/B	370T236/B
	kW	26	30	37

1	Kit cable glands EPDM	5KL30ABC	All models	
	Kit cable glands FPM from BEGIN 2010	5KL30ABK	All models cable 4G10	
2	Thrust bearing kit 4 - 22 kW	-	All models	
*3	Seals kit NBR	5KL02AAD	All models	
4	Screws kit	5KL40AAD	All models	
*5	Kit MECH D28 / Flange CER/CARB/FPM-A304	5KL01AAG	All models	
7	Lower support cast iron	561450560	All models ACS approved paint	
8	Spacer	562550150	All models ACS approved paint	
9	Upper bracket DOL	561450600	All models ACS approved paint	
	Upper bracket SD	561450610	All models ACS approved paint	
10	Thrust bearing bracket	561450550	All models ACS approved paint	
11	Bottom cover	564250070	All models ACS approved paint	
*13	Upper/lower bush bearing 4 - 22 kW	-	All models	
*14	Upper/lower bush bearing 26 - 37 kW	562590060	All models, N. 4	
15	Sand guard EPDM	168561020	All models	
16	Release valve A316 NBR	549300070	All models	
17	Filling plug A316 EPDM	540500010	All models	
18	Cable gland gasket EPDM	568560290	All models	
*19	Thrust bearing kit 26 - 37 kW	5KL41AAD	All models	
(*)	Bush bearings chromate	5KL35AAE	FOR REPAIR ONLY	

6	Stator assy DOL	code		
	Stator assy SD		540661106	540661116
12	Rotor shaft A420	code	555082100	555082110

PVC Winding Wire				
230-3-60 DOL				
Wire Code				
Wire Type				
Tot wire need [m]				
230/380-3-60 SD				
Wire Code	573325812	573325814		
Wire Type	D1,6/2,4	D1,8/2,6		
Tot wire need [m]	290	285		
* Wire HT/HD instead of PVC				
In case of order, the quantity delivered will depend from the coil currently available.				

Flat Power cable H07BB-F ACS approved				
230-3-60 DOL				
Cable code				
Section (mm2)				
230/380-3-60 SD				
Cable code	572850914	572850914		
Section (mm2)	3X10	3X10		
Cable code	572850964	572850964		
Section (mm2)	4G10	4G10		
Codes are referred to 1 m of cable				

Special Versions				
1	Kit cable glands FPM	5KL30ABD	All models	
	Kit cable glands FPM from BEGIN 2010	5KL30ABL	All models cable 4G10	
*3	Seals kit EPDM	5KL02AAE	All models	
	Seals kit FPM	5KL02AAF	All models	
*5	Kit MECH D28 / Flange SIC/SIC/NBR	5KL01AAH	All models	
	Kit MECH D28 / Flange SIC/SIC/FPM	5KL01AAK	All models	
15	Sand guard FPM	168561021	All models	
16	Release valve A316 FPM	549300071	All models	
17	Plug for PT100	540500020	All models	
18	Cable gland gasket FPM	568560291	All models	

(*) = WARNING. These parts replacement requires an Authorized Service.

* Recommended spare parts - Parti di ricambio consigliate
* Pièces détachées conseillées - Empfohlene Ersatzteile

CP6W/B 6" Submersible Motors

CP6W 3Ph 380V 60Hz DOL	code	110T386/B	130T386/B	150T386/B	185T386/B	220T386/B
CP6W 3Ph 380/660V 60Hz SD	code	110T386/B	130T386/B	150T386/B	185T386/B	220T386/B
	kW	11	13	15	18,5	22

1	Kit cable glands EPDM	5KL30ABC	All models			
*2	Thrust bearing kit 4 - 22 kW	5KL41AAC	All models			
*3	Seals kit NBR	5KL02AAD	All models			
4	Screws kit	5KL40AAD	All models			
*5	Kit MECH D28 / Flange CER/CARB/FPM - A30	5KL01AAG	All models			
7	Lower support cast iron	561450560	All models ACS approved paint			
8	Spacer	562550150	All models ACS approved paint			
9	Upper bracket DOL	561450580	All models ACS approved paint			
	Upper bracket SD	561450590	All models ACS approved paint			
10	Thrust bearing bracket	561450550	All models ACS approved paint			
11	Bottom cover	564250070	All models ACS approved paint			
*13	Upper/lower bush bearing 4 - 22 kW	562590010	All models, N. 2			
*14	Upper/lower bush bearing 26 - 37 kW	-	All models			
15	Sand guard EPDM	168561020	All models			
16	Release valve A316 NBR	549300070	All models			
17	Filling plug A316 EPDM	540500010	All models			
18	Cable gland gasket EPDM	568560290	All models			
19	Thrust bearing kit 26 - 37 kW	-	All models			
(*)	Bush bearings chromate	5KL35AAD	All models FOR REPAIR ONLY			

6	Stator assy DOL	code	540661050	540661060	540661070	540661080	540661090
	Stator assy SD	code	540661055	540661065	540661075	540661085	540661095
12	Rotor shaft A420	code	555082050	555082060	555082070	555082080	555082090

PVC Winding Wire					
380-3-60 DOL					
Wire Code	573325811	573325813	573325814	573325811	573325810
Wire Type	D1,5/2,3	D1,7/2,5	D1,8/2,6	D1,5/2,3	D1,4/2,2
Tot wire need [m]	180	165	175	255	295
380/660-3-60 SD					
Wire Code	573325807	573325808	573325811	573325811	573325812
Wire Type	D1,0/1,8	D1,2/1,9	D1,5/2,3	D1,5/2,3	D1,6/2,4
Tot wire need [m]	305	285	255	250	310
In case of order, the quantity delivered will depend from the coil currently available.					

Flat Power cable H07BB-F ACS approved					
380-3-60 DOL					
Cable code	572850960	572850960	572850960	572850962	572850962
Section (mm2)	4G4	4G4	4G4	4G6	4G6
380/660-3-60 SD					
Cable code	572850910	572850910	572850910	572850910	572850910
Section (mm2)	3X4	3X4	3X4	3X4	3X4
Cable code	572850960	572850960	572850960	572850960	572850960
Section (mm2)	4G4	4G4	4G4	4G4	4G4
Codes are referred to 1 m of cable					

Special Versions			
1	Kit cable glands FPM	5KL30ABD	All models
*3	Seals kit EPDM	5KL02AAE	All models
	Seals kit FPM	5KL02AAF	All models
*5	Kit MECH D12 / Flange SIC/SIC/NBR	5KL01AAH	All models
	Kit MECH D12 / Flange SIC/SIC/FPM	5KL01AAK	All models
15	Sand guard FPM	168561021	All models
16	Release valve A316 FPM	549300071	All models
17	Plug for PT100	540500020	All models
18	Cable gland gasket FPM	568560291	All models

(*) = WARNING. These parts replacement requires an Authorized Service.

* Recommended spare parts - Parti di ricambio consigliate
* Pièces détachées conseillées - Empfohlene Ersatzteile

CP6W/B 6" Submersible Motors

CP6W 3Ph 380V 60Hz DOL	code	260T386/B	300T386/B	370T386/B
CP6W 3Ph 380/660V 60Hz SD	code	260T386/B	300T386/B	370T386/B
	kW	26	30	37

1	Kit cable glands EPDM	5KL30ABC	All models	
	Kit cable glands EPDM from BEGIN 2010	5KL30ABK	All models cable 4G10	
2	Thrust bearing kit 4 - 22 kW	-	All models	
*3	Seals kit NBR	5KL02AAD	All models	
4	Screws kit	5KL40AAD	All models	
*5	Kit MECH D28 / Flange CER/CARB/FPM-A304	5KL01AAG	All models	
7	Lower support cast iron	561450560	All models ACS approved paint	
8	Spacer	562550150	All models ACS approved paint	
9	Upper bracket DOL	561450600	All models ACS approved paint	
	Upper bracket SD	561450610	All models ACS approved paint	
10	Thrust bearing bracket	561450550	All models ACS approved paint	
11	Bottom cover	564250070	All models ACS approved paint	
*13	Upper/lower bush bearing 4 - 22 kW	-	All models	
*14	Upper/lower bush bearing 26 - 37 kW	562590060	All models, N. 4	
15	Sand guard EPDM	168561020	All models	
16	Release valve A316 NBR	549300070	All models	
17	Filling plug A316 EPDM	540500010	All models	
18	Cable gland gasket EPDM	568560290	All models	
*19	Thrust bearing kit 26 - 37 kW	5KL41AAD	All models	
(*)	Bush bearings chromate	5KL35AAE	FOR REPAIR ONLY	

6	Stator assy DOL	code	540661100	540661110	540643970
	Stator assy SD		540661105	540661115	540643975
12	Rotor shaft A420	code	555082100	555082110	555082120

PVC Winding Wire			
380-3-60 DOL			
Wire Code	573325813	573325814	573325846
Wire Type	D1,7/2,5	D1,8/2,6	D2,0/3,1
Tot wire need [m]	250	230	245*
380/660-3-60 SD			
Wire Code	573325813	573325814	573325846
Wire Type	D1,7/2,5	D1,8/2,6	D2,0/3,1
Tot wire need [m]	250	230	305*
* Wire HT/HD instead of PVC			
In case of order, the quantity delivered will depend from the coil currently available.			

Flat Power cable H07BB-F ACS approved			
380-3-60 DOL			
Cable code	572850964	572850964	572850964
Section (mm2)	4G10	4G10	4G10
380/660-3-60 SD			
Cable code	572850910	572850910	572850910
Section (mm2)	3X4	3X4	3X4
Cable code	572850960	572850960	572850960
Section (mm2)	4G4	4G4	4G4
Codes are referred to 1 m of cable			

Special Versions			
1	Kit cable glands FPM	5KL30ABD	All models
	Kit cable glands FPM from BEGIN 2010	5KL30ABL	All models cable 4G10
*3	Seals kit EPDM	5KL02AAE	All models
	Seals kit FPM	5KL02AAF	All models
*5	Kit MECH D28 / Flange SIC/SIC/NBR	5KL01AAH	All models
	Kit MECH D28 / Flange SIC/SIC/FPM	5KL01AAK	All models
15	Sand guard FPM	168561021	All models
16	Release valve A316 FPM	549300071	All models
17	Plug for PT100	540500020	All models
18	Cable gland gasket FPM	568560291	All models

(*) = WARNING. These parts replacement requires an Authorized Service.

* Recommended spare parts - Parti di ricambio consigliate
* Pièces détachées conseillées - Empfohlene Ersatzteile

CP6W_B_6_Dec13_EdA

CP6W/B 6" Submersible Motors

CP6W 3Ph 230V 60Hz DOL	code	40T236/B	55T236/B	75T236/B	93T236/B	110T236/B	130T236/B	150T236/B	185T236/B	220T236/B
CP6W 3Ph 230/380V 60Hz SD	code	40T236/B	55T236/B	75T236/B	93T236/B	110T236/B	130T236/B	150T236/B	185T236/B	220T236/B
	kW	5,5	5,5	7,5	9,3	11	13	15	18,5	22

1	Kit cable glands EPDM	5KL30ABC	All models
*2	Thrust bearing kit 4 - 22 kW	5KL41AAC	All models
*3	Seals kit NBR	5KL02AAD	All models
4	Screws kit	5KL40AAD	All models
*5	Kit MECH D28 / Flange CER/CARB/FPM-A304	5KL01AAG	All models
7	Lower support cast iron	561450560	All models ACS approved paint
8	Spacer	562550150	All models ACS approved paint
9	Upper bracket DOL	561450580	All models ACS approved paint
	Upper bracket SD	561450590	All models ACS approved paint
10	Thrust bearing bracket	561450550	All models ACS approved paint
11	Bottom cover	564250070	All models ACS approved paint
*13	Upper/lower bush bearing 4 - 22 kW	562590010	All models, N. 2
*14	Upper/lower bush bearing 26 - 37 kW	-	All models
15	Sand guard EPDM	168561020	All models
16	Release valve A316 NBR	549300070	All models
17	Filling plug A316 EPDM	540500010	All models
18	Cable gland gasket EPDM	568560290	All models
19	Thrust bearing kit 26 - 37 kW	-	All models
(*)	Bush bearings chromate	5KL35AAD	All models FOR REPAIR ONLY

6	Stator assy DOL	code	540661011	540661021	540661031	540661041	540661051	-	540661071	540661081	540661091
	Stator assy SD		-	-	-	-	-	-	-	540661086	540661096
12	Rotor shaft A420	code	555082010	555082020	555082030	555082040	555082050	555082060	555082070	555082080	555082090

PVC Winding Wire										
230-3-60 DOL										
Wire Code	573325806	573325808	573325809	573325810	573325811	-	573325814	573325809	573325810	
Wire Type	D1,0/1,7	D1,2/1,9	D1,3/2,1	D1,4/2,2	D1,5/2,3	-	D1,8/2,6	D1,3/2,1	D1,4/2,2	
Tot wire need [m]	255	225	205	200	190	-	180	305	305	
230/380-3-60 SD										
Wire Code	-	-	-	-	-	-	-	573325809	573325810	
Wire Type	-	-	-	-	-	-	-	D1,3/2,1	D1,4/2,2	
Tot wire need [m]	-	-	-	-	-	-	-	305	305	
In case of order, the quantity delivered will depend from the coil currently available.										

Flat Power cable H07BB-F ACS approved										
230-3-60 DOL										
Cable code	572850960	572850960	572850960	572850960	572850960	572850964	572850964	572850964	572850964	
Section (mm2)	4G4	4G4	4G4	4G4	4G4	4G10	4G10	4G10	4G10	
230/380-3-60 SD										
Cable code	-	-	-	-	-	-	-	572850910	572850920	
Section (mm2)	-	-	-	-	-	-	-	3X4	3X6	
Cable code	-	-	-	-	-	-	-	572850960	572850962	
Section (mm2)	-	-	-	-	-	-	-	4G4	4G6	
Codes are referred to 1 m of cable										

Special Versions			
1	Kit cable glands FPM	5KL30ABD	All models
*3	Seals kit EPDM	5KL02AAE	All models
	Seals kit FPM	5KL02AAF	All models
*5	Kit MECH D28 / Flange SIC/SIC/NBR	5KL01AAH	All models
	Kit MECH D28 / Flange SIC/SIC/FPM	5KL01AAK	All models
15	Sand guard FPM	168561021	All models
16	Release valve A316 FPM	549300071	All models
17	Plug for PT100	540500020	All models
18	Cable gland gasket FPM	568560291	All models

(*) = WARNING. These parts replacement requires an Authorized Service.

* Recommended spare parts - Parti di ricambio consigliate
* Pièces détachées conseillées - Empfohlene Ersatzteile