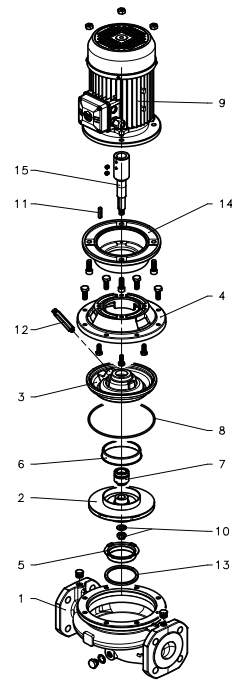


xylem

FCS Serie-Series 60 Hz



 **LOWARA**

P. 180/A - 184/A

Item N.	Descrizione - Description	Q.tà Q.ty	Codice - Code								
			FCS40-125/116/D	FCS40-160/156/D	FCS40-160/226/C	FCS40-200/406A	FCS40-200/406	FCS40-200/556	FCS40-250/756	FCS40-250/1106	
			104563400	104563410	104391240	TbD	TbD	TbD	TbD	TbD	
			1.1 kW	1.5 kW	2.2 kW	4.0 kW	4.0 kW	5.5 kW	7.5 kW	11 kW	
1	Corpo pompa/rasam./tappi - Pump body/wear ring/plugs	1	151350220				151350240				
* 2	Girante - Impeller	1	150783050	150783150	150783270	150783340	150783450	150783500	150783600	150783700	
3	Disco portatenuta-C/rasam. - Seal housing-C/wear ring	1	160150201	150150041			150150071				
4	Lanterna - Adaptor	1	161430511				161452881				
* 5	Rasamento - Wear ring	1	168601491								
* 6	Controrasamento - Counterwear ring	1	-	465020201							
* 7	Tenuta meccanica - Mechanical seal	1	002232204								
* 8	OR - OR	1	002221774				002221788				
** 9	Motore completo - Entire motor	1	107234081	107234091	50001PB00	50008PE00	50008PE00	50013PE00	50017PB00	50019PE00	
	Tipo - Type		SM80B5/311 IE3	SM90RB5/315 IE3	PLM90B5/322 IE2	PLM112RB5/340 IE2	PLM112RB5/340 IE2	PLM132RB5/355 IE2	PLM132B5/375 IE2	PLM160RB5/3110 IE2	
10	Dado fissaggio girante - Impeller lock nut	1 + 1	002633002								
	Rondella - Washer		002635072								
11	Linguetta - Key	1	002650361								
12	Valvola di sfogo - Air bleed valve	1	159300050								
13	Anello distanziale - Spacer ring	1	168601540								
14	Raccordo motore - Motor connector	1	167350110				167350160		167350130		167350140
15	Giunto - Coupling	1	157600071	157600081			157600091		157600101		157600111

\* Parti di ricambio consigliate - Recommended spare parts

Ed. 14-05-2014-A

Item N.	Descrizione - Description	Q.tà Q.ty	Codice - Code								
			FCS50-125/156/D	FCS50-160/226/C	FCS50-160/306/P	FCS50-160/406/P	FCS50-200/556/P	FCS50-200/756/P	FCS50-250/1106A	FCS50-250/1106	FCS50-250/1506
			104563480	104391290	16D	104402320	104402330	104402340	16D	16D	16D
			1.5 kW	2.2 kW	3.0 kW	4.0 kW	5.5 kW	7.5 kW	11 kW	11 kW	15 kW
1	Corpo pompa-rasam-tappi - Pump body-wear ring - plugs	1	151350260				151350280				
* 2	Girante - Impeller	1	150784020	150784080	150784130	150784200	150784300	150784400	150784670	150784710	150784830
3	Disco portatenuta-C/rasam. - Seal housing-C/wear ring	1	160150201				150150071				150150091
4	Lanterna - Adaptor	1	161430511		161430521			161452881			
* 5	Rasamento - Wear ring	1	168601501						168601511		
* 6	Controrasamento - Counterwear ring	1	-			465020201					
* 7	Tenuta meccanica - Mechanical seal	1	002232204								002232801
* 8	OR - OR	1	002221774				002221788				
** 9	Motore completo - Entire motor	1	107230360	107230380	130646257	107106307	107106337	107106347	107106397		107106421
** 9	Motore completo - Entire motor	1	107234091	50001PB00	50002PE00	50008PE00	50013PE00	50017PB00	50019PE00		50024PB00
	Tipo - Type		SM90RB5/315 IE3	PLM90B5/322 IE2	PLM100RB5/330 IE2	PLM112RB5/340 IE2	PLM132RB5/355 IE2	PLM132B5/375 IE2	PLM160RB5/3110 IE2		PLM160B5/3150 IE2
10	Dado fissaggio girante - Impeller lock nut	1	002633002								002633004
	Rondella - Washer	1	002635072								002635074
11	Linguetta - Key	1	002650361								002650392
12	Valvola di sfiato - Air bleed valve	1	159300050								
13	Anello distanziale - Spacer ring	1	168601550			168601590			168601550		
14	Raccordo motore - Motor connector	1	167350110		167350120		167350130		167350140		
15	Giunto - Coupling	1	157600081		157600091		157600101		157600111		157600151

\* Parti di ricambio consigliate - Recommended spare parts

Ed. 14-05-2014-A

Item N.	Descrizione - Description	Q.tà Q.ty	Codice - Code									
			FCS65-125/306/P	FCS65-125/406/P	FCS65-160/556/P	FCS65-160/756/P	FCS65-200/1106A/P	FCS65-200/1106/P	FCS65-250/1506/P	FCS65-250/1856/P	FCS65-250/2206/P	
			101210990	TbD	104402390	104402400	TbD	TbD	104402430	TbD	TbD	
		3.0 kW	4.0 kW	5.5 kW	7.5 kW	11.0 kW	11.0 kW	15.0 kW	18.5 kW	22.0 kW		
1	Corpo pompa-rasam.-tappi - Pump body-wear ring-plugs	1	151350300					151350320				
* 2	Girante - Impeller	1	150785080	150785120	150785180	150785250	150785300	150785450	150785570	150785590	150785630	
3	Disco portatenuta-C/rasam. - Seal housing-C/wear ring	1	160150221		150150051		150150071		150150091			
4	Lanterna - Adaptor	1	161453151					161452881				
* 5	Rasamento - Wear ring	1	168601511									
* 6	Controrasamento - Counterwear ring	1	-		465020201							
* 7	Tenuta meccanica - Mechanical seal	1	002232204					002232801				
* 8	OR - OR	1	002221777				002221788					
** 9	Motore completo - Entire motor	1	50002PE00	50008PE00	50013PE00	50017PB00	50019PE00		50024PB00	50025PB00	50026PE00	
	Tipo - Type		PLM100RB5/330 IE2	PLM112RB5/340 IE2	PLM132RB5/355 IE2	PLM132B5/375 IE2	PLM160RB5/3110 IE2		PLM160B5/3150 IE2	PLM160B5/3185 IE2	PLM180RB5/3220 IE2	
10	Dado fissaggio girante - Impeller lock nut	1	002633002					002633004				
	Rondella - Washer	1	002635072					002635074				
11	Linguetta - Key	1	002650361					002650392				
12	Valvola di sfiato - Air bleed valve	1	159300050									
13	Anello distanziale - Spacer ring	1	168601560									
14	Raccordo motore - Motor connector	1	167350160			167350130		167350140				
15	Giunto - Coupling	1	157600091		157600101		157600111		157600151		157600161	

\* Parti di ricambio consigliate - Recommended spare parts

Ed. 14-05-2014-A

Item N.	Descrizione - Description	Q.tà Q.ty	Codice - Code					
			FCS80-125/556/P	FCS80-160/756/P	FCS80-200/1106/P	FCS80-200/1506/P	FCS80-200/1856/P	FCS80-200/2206/P
			104402460	TbD	104402480	104402490	104402520	TbD
					FCBS80-200/1106/P	FCBS80-200/1506/P	FCBS80-200/1856/P	FCBS80-200/2206/P
			TbD	104402710	TbD	TbD		
		5.5 kW	7.5 kW	11 kW	15 kW	18.5 kW	22.0 kW	
1	Corpo pompa-rasam.-tappi - Pump body-wear ring-plugs	1	151350340			151350360		
* 2	Girante - Impeller	1	150786030	150786100	160751463	160751468	160751620	160751630
	Girante - Impeller, Bronzo - Bronze		-	-	160720430	160720440	160720490	160720500
3	Disco portatenuta-C/rasam. - Seal housing-C/wear ring	1	160150221			150150081		
4	Lanterna - Adaptor	1	161453151			161452881		
* 5	Rasamento - Wear ring	1	168601521			168601580		
* 6	Controrasamento - Counterwear ring	1	-			168601270		
* 7	Tenuta meccanica - Mechanical seal	1	002232204			002232801		
* 8	OR - OR	1	002221777			002221788		
** 9	Motore completo - Entire motor		50013PE00	50017PB00	50019PE00	50024PB00	50025PB00	50026PE00
	Tipo - Type		PLM132RB5/355 IE2	PLM132B5/375 IE2	PLM160RB5/3110 IE2	PLM160B5/3150 IE2	PLM160B5/3185 IE2	PLM180RB5/3220 IE2
10	Dado fissaggio girante - Impeller lock nut	1	002633002			002633004		
	Rondella - Washer	1	002635072			002635074		
11	Linguetta - Key	1	002650361			002650392		
12	Valvola di sfiato - Air bleed valve	1	159300050					
13	Anello distanziale - Spacer ring	1	-					
14	Raccordo motore - Motor connector	1	167350130			167350140		
15	Giunto - Coupling	1	157600101			157600151		157600161

\* Parti di ricambio consigliate - Recommended spare parts

Ed. 14-05-2014-A

Item N.	Descrizione - Description	Q.tà Q.ty	Codice - Code	
			FCS100-200/1856/P	FCS100-250/2206/P
			104402520	TbD
			FCBS100-200/1856/P	FCBS100-250/2206/P
			TbD	TbD
			18.5 kW	22 kW
1	Corpo pompa-rasam.-tappi - Pump body-wear ring-plugs	1	151350400	
* 2	Girante - Impeller	1	160751251	160751282
	Girante - Impeller, Bronzo - Bronze		160720690	160720740
3	Disco portatenuta-C/rasam. - Seal housing-C/wear ring	1	160150081	
4	Lanterna - Adaptor	1	161452881	
* 5	Rasamento - Wear ring	1	168601270	
* 6	Controrasamento - Counterwear ring	1	168601270	
* 7	Tenuta meccanica - Mechanical seal	1	002232801	
* 8	OR - OR	1	002221788	
** 9	Motore completo - Entire motor	1	50025PB00	50026PE00
	Tipo - Type		PLM160B5/3185 IE2	PLM180RB5/3220 IE2
10	Dado fissaggio girante - Impeller lock nut	1	002633004	
	Rondella - Washer	1	002635074	
11	Linguetta - Key	1	002650392	
12	Valvola di sfiato - Air bleed valve	1	159300050	
13	Anello distanziale - Spacer ring	1		
14	Raccordo motore - Motor connector	1	167350140	
15	Giunto - Coupling	1	157600151	157600161

\* Parti di ricambio consigliate - Recommended spare parts

Ed. 14-05-2014-A