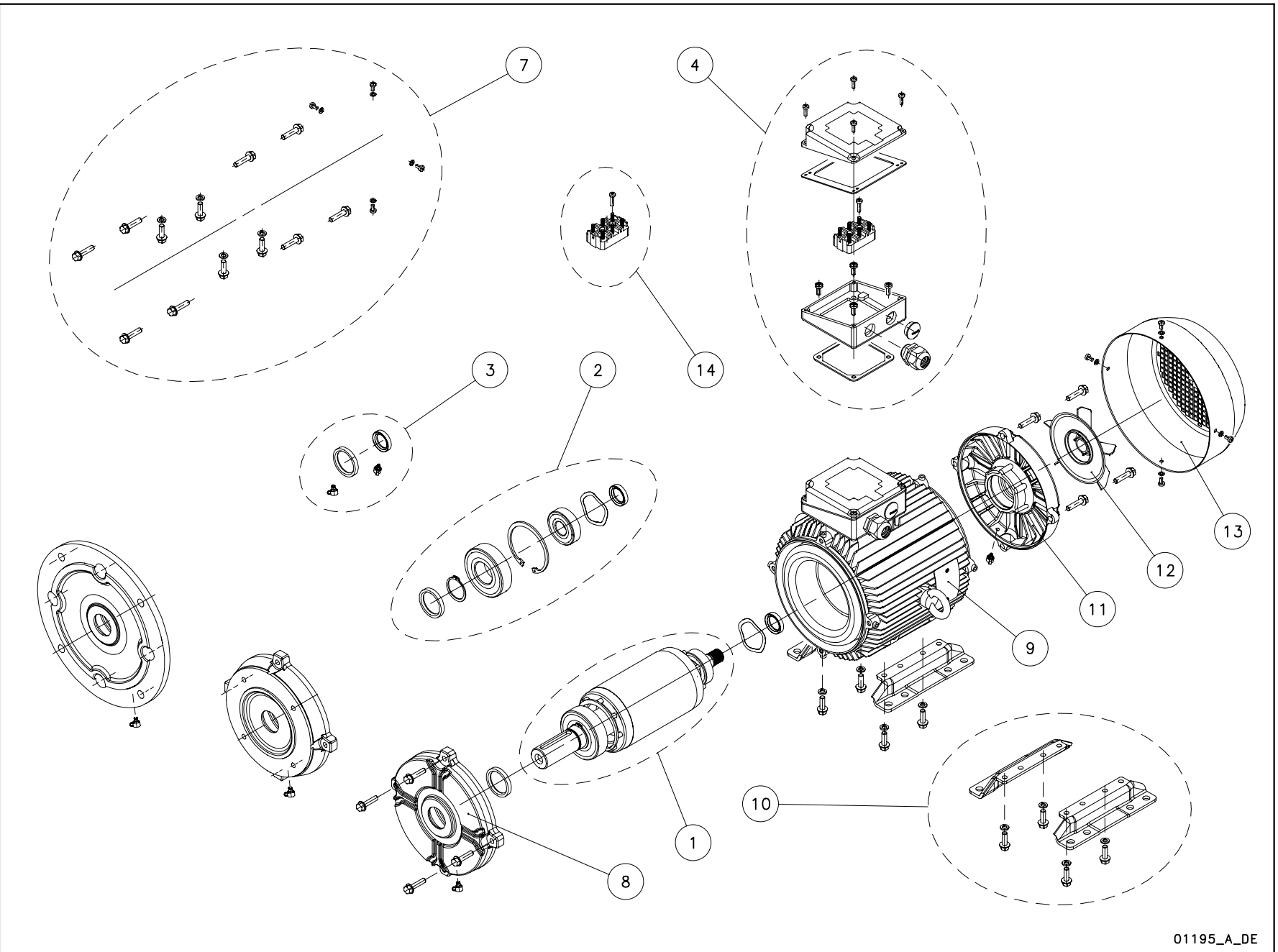


01193\_A\_DE

N.	Descrizione it	Description en	Description fr	Beschreibung de	Descripción es	Descrição pt
1	Albero rotore completo	Shaft rotor complete	Arbre rotor au complet	Rotorwelle Komplete	Eje rotor complete	Eixo rotor completo
2	Cuscinetti - Anelli	Bearings - Rings	Roulements - Anneaux	Lagers - Rings	Cojinetes - Anillos	Rolamentos - Anéis
3	Anelli tenuta - Tappi	Oil seals - Plugs	Bagues étanchéité-Bouchons	Abdichtungsringen-Schrauben	Anillos estanqueidad- Tapones	Selos anéis -Tampões
4	Scatola morsettiere	Terminal box	Boite a bornier	Klemmenkasten	Caja de bornes	Quadro de grampos
5	Condensatore	Capacitor	Condensateur	Kondensator	Condensador	Condensador
6	Tiranti PLM90	Tie rods PLM90	Tiges PLM90	Spannstangen PLM90	Tirantes PLM90	Tirantes PLM90
7	Viteria	Screws	Vis	Schrauben	Tornillos	Parafusos
8	Scudo anteriore DE	Front shield DE	Flasque antérieur	Vorderer kasten	Escudo anterior	Escudo dianteiro
9	Cassa statore - scatola morsettiere	Stator housing - terminal box	Carcasse stator - boite a bornier	Statorgehäuse - Klemmenkastendeckel	Carcasa estator - Caja de bornes	Caixa estator - Quadro de grampos
10	Piedi motore	Motor feet	Piedes moteur	Motorstützfuss	Motor pies	Motor pés
11	Scudo posteriore NDE	Rear shield NDE	Flasque arriere	Hinteren Schild	Escudo posterior	Escudo posterior
12	Ventola	Fan	Ventilateur	Lüfterrad	Ventilador	Ventoinha
13	Copriventola	Fan cover	Couvercle de ventilateur	Lüfterradhaube	Tapa ventilador	Cobertura da ventoinha
14	Basetta con perni	Base with pins	Bornier avec fiches	Klemmenbrett mit zapfen	Soporte de pernos	Bloco de grampos
N.	Beschrijving nl	Περιγραφή el	Açıklama tr	Kuvaus fi	Описание ru	Opis pl
1	Rotor as compleet	Άξονας στροφέα πλήρης	Komple rotor mili	Täydellinen roottorin akseli	Укомплектованный вал ротора	Wałek kompletny (z rotorem)
2	Lagers - Ringen	Κουζινέτα - δαχτυλίδια	Rulmanlar - Halkalar	Laakerit - Renkaat	Подшипники - Кольца	Łożyska - pierścienie
3	Zegel ringen - Stekkers	Στεγανοποιητικοί δακτύλιοι - Πώματα	Yağ keçeleri - Tapalar	Tiivisterenkaat - Tulpat	Уплотнительные прокладки - пробки	Uszczelka olejowa - zatyczki
4	Kabelkast	Κιβώτιο συστοιχίας ακροδεκτών	Terminal kutusu	Liitinalusta	Крышка клеммника	Skrzynka zaciskowa
5	Condensator	Πυκνωτής	Kondansatör	Kondensaattori	Конденсатор	Kondensator
6	Trekstangen PLM90	Ράβδοι δεσμών PLM90	Çekme çubukları PLM90	Vetotangot PLM90	<b>Тяги PLM90</b>	Szpilki gwintowane PLM90
7	Schroeven	Βίδες	Vidalar	Ruuvit	Винты	Śruby
8	Voorzijde Motorhuis	Μπροστινός προφυλακτήρας NDE	Ön koruma	Etusuojus DE	Передний щит Прив.сторона	Przednia tarcza
9	Statorhuis - Klemmenbord	Κάσα στάτη - κιβώτιο συστοιχίας ακροδεκτών	Stator yuvası - Terminal kutusu	Staattorin kotelo - liitinalusta	Корпус статора - коробка клеммника	Obudowa silnika - stator
10	Motor voeten	Πόδια κινητήρα	Motor ayakları	Moottorin jalat	Ножки двигателя	Stopki silnika
11	Achtergedeelte Motorhuis	Πίσω προφυλακτήρας NDE	Arka koruma	Takasuoja NDE	Задний щит Неприв. Сторона	Tylna tarcza
12	Ventilator	Ανεμιστήρας	Vantilatör	Tuuletin	Вентилятор	Wentylator
13	Ventilatorkap	Κάλυμμα ανεμιστήρων	Vantilatör kapağı	Tuulettimen suojus	Крышка вентилятора	Ośłona wentylatora
14	Klemmenbord	Βάση με πείρους	Pimli kaide	Perusta ja tapit	Основание со штырями	Podstawa ze sworzeniami



01195\_A\_DE

N.	Descrizione it	Description en	Description fr	Beschreibung de	Descripción es	Descrição pt
1	Albero rotore completo	Shaft rotor complete	Arbre rotor au complet	Rotorwelle Komplete	Eje rotor complete	Eixo rotor completo
2	Cuscinetti - Anelli	Bearings - Rings	Roulements - Anneaux	Lagers - Rings	Cojinetes - Anillos	Rolamentos - Anéis
3	Anelli tenuta - Tappi	Oil seals - Plugs	Bagues étanchéité-Bouchons	Abdichtungsringen-Schrauben	Anillos estanqueidad- Tapones	Selos anéis -Tampões
4	Scatola morsettiere	Terminal box	Boite a bornier	Klemmenkasten	Caja de bornes	Quadro de grampos
5	Condensatore	Capacitor	Condensateur	Kondensator	Condensador	Condensador
6	Tiranti PLM90	Tie rods PLM90	Tiges PLM90	Spannstangen PLM90	Tirantes PLM90	Tirantes PLM90
7	Viteria	Screws	Vis	Schrauben	Tornillos	Parafusos
8	Scudo anteriore DE	Front shield DE	Flasque antérieur	Vorderer kasten	Escudo anterior	Escudo dianteiro
9	Cassa statore - scatola morsettiere	Stator housing - terminal box	Carcasse stator - boite a bornier	Statorgehäuse - Klemmenkastendeckel	Carcasa estator - Caja de bornes	Caixa estator - Quadro de grampos
10	Piedi motore	Motor feet	Piedes moteur	Motorstützfuss	Motor pies	Motor pés
11	Scudo posteriore NDE	Rear shield NDE	Flasque arriere	Hinteren Schild	Escudo posterior	Escudo posterior
12	Ventola	Fan	Ventilateur	Lüfterrad	Ventilador	Ventoinha
13	Copriventola	Fan cover	Couvercle de ventilateur	Lüfterradhaube	Tapa ventilador	Cobertura da ventoinha
14	Basetta con perni	Base with pins	Bornier avec fiches	Klemmenbrett mit zapfen	Soporte de pernos	Bloco de grampos
N.	Beschrijving nl	Περιγραφή el	Açıklama tr	Kuvaus fi	Описание ru	Opis pl
1	Rotor as compleet	Άξονας στροφέα πλήρης	Komple rotor mili	Täydellinen roottorin akseli	Укомплектованный вал ротора	Wałek kompletny (z rotorem)
2	Lagers - Ringen	Κουζινέτα - δαχτυλίδια	Rulmanlar - Halkalar	Laakerit - Renkaat	Подшипники - Кольца	Łożyska - pierścienie
3	Zegel ringen - Stekkers	Στεγανοποιητικοί δακτύλιοι - Πώματα	Yağ keçeleri - Tapalar	Tiivisterenkaat - Tulpat	Уплотнительные прокладки - пробки	Uszczelka olejowa - zatyczki
4	Kabelkast	Κιβώτιο συστοιχίας ακροδεκτών	Terminal kutusu	Liitinalusta	Крышка клеммника	Skrzynka zaciskowa
5	Condensator	Πυκνωτής	Kondansatör	Kondensaattori	Конденсатор	Kondensator
6	Trekstangen PLM90	Ράβδοι δεσμών PLM90	Çekme çubukları PLM90	Vetotangot PLM90	<b>Тяги PLM90</b>	Szpilki gwintowane PLM90
7	Schroeven	Βίδες	Vidalar	Ruuvit	Винты	Śruby
8	Voorzijde Motorhuis	Μπροστινός προφυλακτήρας NDE	Ön koruma	Etusuojus DE	Передний щит Прив.сторона	Przednia tarcza
9	Statorhuis - Klemmenbord	Κάσα στάτη - κιβώτιο συστοιχίας ακροδεκτών	Stator yuvası - Terminal kutusu	Staattorin kotelo - liitinalusta	Корпус статора - коробка клеммника	Obudowa silnika - stator
10	Motor voeten	Πόδια κινητήρα	Motor ayakları	Moottorin jalat	Ножки двигателя	Stopki silnika
11	Achtergedeelte Motorhuis	Πίσω προφυλακτήρας NDE	Arka koruma	Takasuojaus NDE	Задний щит Неприв. Сторона	Tylna tarcza
12	Ventilator	Ανεμιστήρας	Vantilatör	Tuuletin	Вентилятор	Wentylator
13	Ventilatorkap	Κάλυμμα ανεμιστήρων	Vantilatör kapağı	Tuulettimen suojus	Крышка вентилятора	Ośłona wentylatora
14	Klemmenbord	Βάση με πείρους	Pimli kaide	Perusta ja tapit	Основание со штырями	Podstawa ze sworzeniami

## PLM Motor Enhanced Shaft FCE 2 Pole 2,2 - 22,0 kW

PLM --->	90B14S2/1225	90B14S2/330	112RB14S2/340	112B14S2/355	132B14S2/375	132B14S2/392	132B14S2/3110	132B14S3/3110
1~, 220-230/60	50004FH00							
3~, 220-380/60		50002PH00						
3~, 380-660/60			50008UN00	50013UH00	50017UH00	50018UH00	50019UH00	50019UP00
	160B14S3/3150	160B14S3/3185	160B14S3/322					
	50024UP00	50025UP00	50026UP00					
kW ->	2,2	3,0	4,0	5,5	7,5	9,2	11,0	11,00
	15,0	18,5	22,0					
	PLM	PLM IE2						
	PLM IE2							

### Kit

1	Shaft rotor complete	5KL09AAV	5KL09AAW	5KL09AA4	5KL09ABF	5KL09ABP	5KL09ABQ	5KL09ABS	5KL09ABT
		5KL09AB6	5KL09AB8	5KL09ACA					
2*	Bearings - Rings	5KL11AAA	5KL11AAS	5KL11AAE	5KL11AAG	5KL11AAM	5KL11AAM	5KL11AAW	5KL11AAW
		5KL11AAQ	5KL11AAQ	5KL11AAQ					
		6203/6205	6203/6205 HE	6205/6206	6206/6306	6305/6308	6305/6308	6305/6308 HE	6305/6308 HE
		6307/6310	6307/6310	6307/6310					
4	Terminal box	5KL30AAF	5KL30AAE	5KL30AAG	5KL30AAL	5KL30AAN	5KL30AAN	5KL30AAN	5KL30AAN
		5KL30AAP	5KL30AAQ	5KL30AAQ					
3	Oil seals - Plugs	5KL03AAA	5KL03AAA	5KL03AAB	5KL03AAB				
						5KL03AAC	5KL03AAC	5KL03AAC	5KL03AAC
		5KL03AAC	5KL03AAC	5KL03AAC					
7	Screws PLM100-160	5KL40AAA							
6	Tie rods	5KL22AAA							
5	Capacitor	5828AAB							

### Single Unit

8	Front shield DE	5KL20AAG	5KL20AAG	5KL20AAK	5KL20AAU	5KL20AAM	5KL20AAM	5KL20AAM	5KL20AAM
		5KL20AAN	5KL20AAN	5KL20AAN					
9	Stator terminal box	5KL25ABN							
			54002P000						
		5KL25AA8	5KL25ABA	5KL25ADC	54013U000	54017U000	54018U000	54019U000	54019U000
11	Rear shield NDE	5KL20AAZ	5KL20AAZ	5KL20AA0	5KL20AA1	5KL20AA3	5KL20AA3	5KL20AA3	5KL20AA3
		5KL20AA4	5KL20AA4	5KL20AA4					
12	Fan	540760010	540760010	540760030	540760030	540760040	540760040	540760040	540760040
		540760040	540760040	540760040					
13	Fan cover	5KL29AAA	5KL29AAA	5KL29AAB	5KL29AAD	5KL29AAF	5KL29AAF	5KL29AAF	5KL29AAF
		5KL29AAG	5KL29AAG	5KL29AAG					
14	Base with pins	5830AAA	-> 4,0 kW		PLM 90 - 100				
		5830AAB	5,5 - 11 kW		PLM 112 - 132				
		5830AAC	15 - 22 kW		PLM 160				
10	Motor feet	-	5,5 - 11 kW						
		5KL23AAE	15,0 - 22,0 kW		PLM 160				

O/R = On Request

Note. Motors with International Energy Efficiency Class IE2 according CE Standard 640/2009

ABOUT SPARE PARTS for PLM MOTORS in 2FHE Elp.

PLS REFER to specific 2FHE 32 2-4 Pole Part TABLES.

\* Recommended spare parts - Parti di ricambio consigliate

\* Pièces détachées conseillées - Empfohlene Ersatzteile

PLM\_E\_FCE\_2P\_P(22-220)\_Feb08\_EdE

## PLM Motor Enhanced Shaft FHE / SHE 2 Pole 2,2 - 22,0 kW

PLM --->	90B14S2/1225	90B14S2/330	112RB14S2/340	112B14S2/355	132B14S2/375	132B14S2/392	132B14S2/3110	132B14S3/3110
1~, 220-230/60	50004FH00							
3~, 220-380/60		50002PH00						
3~, 380-660/60			50008UN00	50013UH00	50017UH00	50018UH00	50019UH00	50019UP00
	160B34S3/3150	160B34S3/3185	160B34S3/322					
	50024UR00	50025UR00	50026UR00					
kW ->	2,2	3,0	4,0	5,5	7,5	9,2	11,0	11,00
	15,0	18,5	22,0					
	PLM	PLM IE2						
	PLM IE2							

### Kit

1	Shaft rotor complete	5KL09AAV	5KL09AAW	5KL09AA4	5KL09ABF	5KL09ABP	5KL09ABQ	5KL09ABS	5KL09ABT
		5KL09AB6	5KL09AB8	5KL09ACA					
2*	Bearings - Rings	5KL11AAA	5KL11AAS	5KL11AAE	5KL11AAG	5KL11AAM	5KL11AAM	5KL11AAW	5KL11AAM
		5KL11AAQ	5KL11AAQ	5KL11AAQ					
	Bearings - Size	6203/6205	6203/6205 HE	6205/6206	6206/6306	6305/6308	6305/6308	6305/6308 HE	6305/6308
		6307/6310	6307/6310	6307/6310					
4	Terminal box	5KL30AAF	5KL30AAE	5KL30AAG	5KL30AAL	5KL30AAN	5KL30AAN	5KL30AAN	5KL30AAN
		5KL30AAP	5KL30AAQ	5KL30AAQ					
3	Oil seals - Plugs	5KL03AAA	5KL03AAA	5KL03AAB	5KL03AAB				
						5KL03AAC	5KL03AAC	5KL03AAC	5KL03AAC
		5KL03AAC	5KL03AAC	5KL03AAC					
7	Screws PLM100-160	5KL40AAA							
6	Tie rods	5KL22AAA							
5	Capacitor	5828AAB							

### Single Unit

8	Front shield DE	5KL20AAG	5KL20AAG	5KL20AAK	5KL20AAU	5KL20AAM	5KL20AAM	5KL20AAM	5KL20AAM
		5KL20AAN	5KL20AAN	5KL20AAN					
9	Stator terminal box	5KL25ABN							
			5KL25AD9						
		5KL25AD6	5KL25AC8	5KL25ADC	5KL25AD0	5KL25AD1	5KL25AD2	5KL25AD4	5KL25AD4
11	Rear shield NDE	5KL20AAZ	5KL20AAZ	5KL20AA0	5KL20AA1	5KL20AA3	5KL20AA3	5KL20AA3	5KL20AA3
		5KL20AA4	5KL20AA4	5KL20AA4					
12	Fan	540760010	540760010	540760030	540760030	540760040	540760040	540760040	540760040
		540760040	540760040	540760040					
13	Fan cover	5KL29AAA	5KL29AAA	5KL29AAB	5KL29AAD	5KL29AAF	5KL29AAF	5KL29AAF	5KL29AAF
		5KL29AAG	5KL29AAG	5KL29AAG					
14	Base with pins	5830AAA	-> 4,0 kW		PLM 90 - 100				
		5830AAB	5,5 - 11 kW		PLM 112 - 132				
		5830AAC	15 - 22 kW		PLM 160				
10	Motor feet	-	5,5 - 11 kW						
		5KL23AAE	15,0 - 22,0 kW		PLM 160				

O/R = On Request

Note. Motors with International Energy Efficiency Class IE2 according CE Standard 640/2009

ABOUT SPARE PARTS for PLM MOTORS in 2FHE Elp.

PLS REFER to specific 2FHE 32 2-4 Pole Part TABLES.

\* Recommended spare parts - Parti di ricambio consigliate

\* Pièces détachées conseillées - Empfohlene Ersatzteile

PLM\_E\_FCE\_2P\_P(22-220)\_Feb08\_EdE