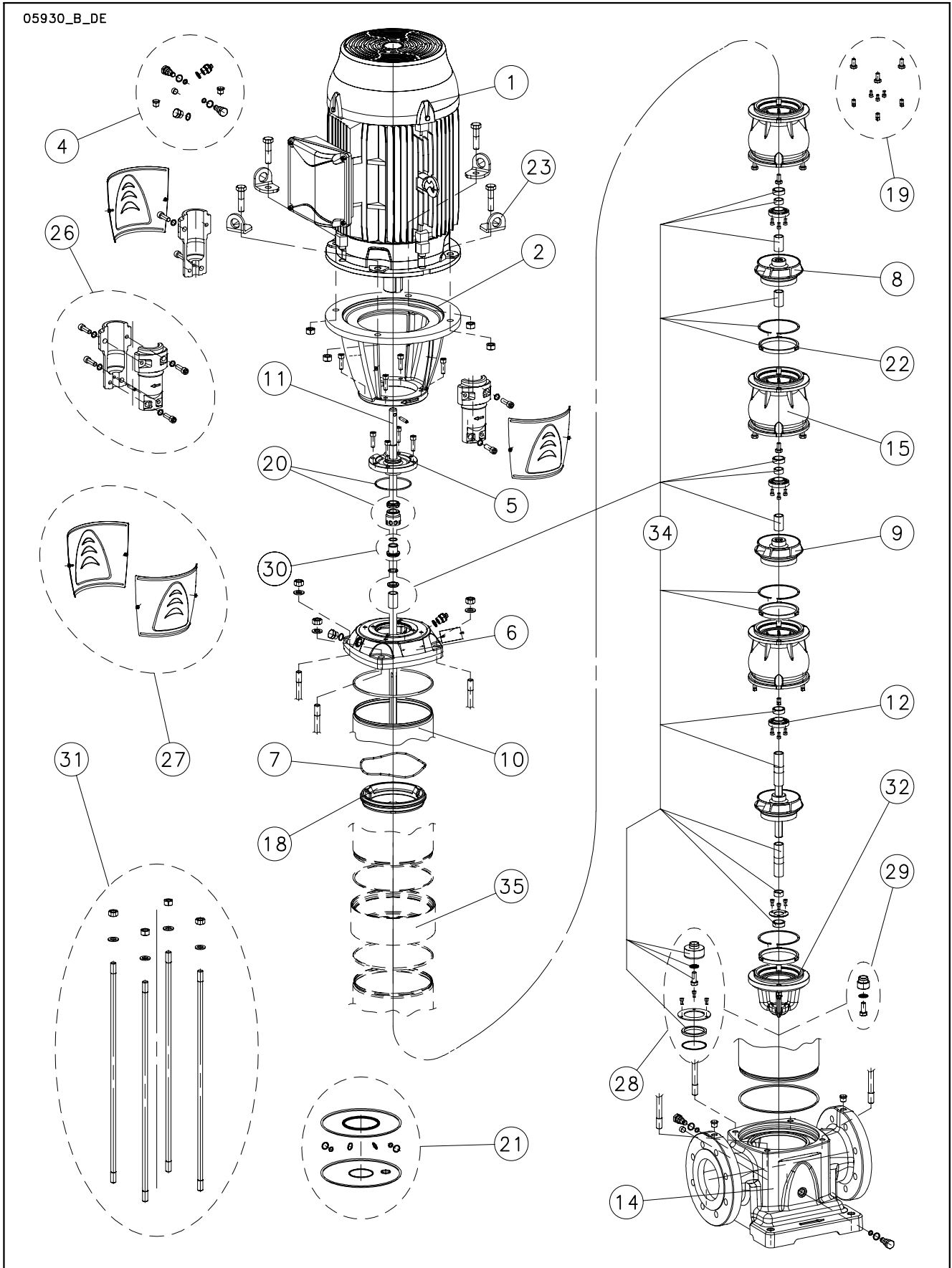


125 SV



Lowara and Vogel Pumpen are a trademark of Xylem Inc. or one of its subsidiaries.
Goulds is a registered trademark of Goulds Pumps, Inc. and is used under license.

N.	Descrizione It	Description en	Description fr	Beschreibung de	Descripción es	Descrição pt
1	Motore	Motor	Moteur	Motor	Motor	Motor
2	Lanterna	Adaptor	Lanterne	Motorlaterne	Adaptador	Adaptador
4	Tappi	Plugs	Bouchons	Stopfen	Tapones	Tampões
5	Disco porta tenuta	Seal housing plate	Disque de support garniture	Dichtungsdeckel	Disco de alojamiento sello	Disco porta-vedante
6	Testata superiore	Upper head	Tête supérieure	Oberer kopf	Cabezal superior	Cabeça superior
7	Molla	Spring	Ressort	Feder	Muelle	Moia
8	Girante ridotta	Reduced impeller	Roue réduite	Lauftrad, reduzierter Durchmesser	Rodete, reducido	Impulsor reduzido
9	Girante piena	Full impeller	Roue pleine	Lauftrad, voller Durchmesser	Rodete, completo	Impulsor completo
10	Camicia	Sleeve	Chemise	Gehäuse	Camisa	Camisa
11	Albero	Shaft	Arbre	Welle	Árbol	Veio
12	Coperchio bloccaggio boccola	Bush locking cover	Couvercle blocage douille	Büchse Halt Abdeckung	Tapa bloqueo casquillo	Tampa bloqueio bucha
14	Corpo pompa	Pump body	Corps de pompe	Pumpengehäuse	Caja bomba	Corpo da bomba
15	Diffusore	Diffuser	Diffuseur	Diffusor	Diffusor	Diffusor
18	Anello adattatore	Adapter ring	Anneau adaptateur	AnpassungRing	Anillo adaptador	Anel adaptador
19	Kit Viterie	Screws kit	Kit Visserie	Bausatz Schrauben	Kit tornillos	Kit parafusos
20	Kit tenuta mecc. + OR	Mechanical seal + OR kit	Kit garniture mec. + joints toriques	Gleitringdichtung + O-Ring [Satz]	Kit sello mec. + junta tórica	Kit vedante mec. + OR
21	Kit guarnizioni OR	O ring kit	Kit joints toriques	Dichtungssatz	Kit juntas tóricas	Kit guarniões OR
22	Kit anelli rasamento	Kit wear rings	Kit anneaux d'usure	Verschleißringe [Satz]	Kit anillos de desgaste	Kit anéis compensadores de desgaste
23	Anello sollevamento	Lifting ring	Anneau de levage	Huböse	Anillo de elevación	Anel de suspensão
26	Kit coppia di semigiunti	Pair of half coupling kit	Kit paire de demi-manchons	Kupplung [Satz]	Kit par de semijuntas	Kit par de semi-juntas
27	Kit protezione giunto	Coupling guard kit	Kit protection manchon	Kupplungsschutz [Satz]	Kit protección junta	Kit proteção junta
28	Kit tamburo reggispinta	Thrust drum kit	Kit tambour butée	Drucklagerscheibe [Satz]	Kit tambor de empuje	Kit tambor de impulso
29	Kit bloccaggio giranti	Impeller locking kit	Kit blocage roues	Lauftrad Halt [Satz]	Kit bloqueo rodetes	Kit bloqueio impulsores
30	Kit bussola tenuta	Bush seal kit	Kit douille garniture	Gleitringdichtungsarretierung und mitnehmer	Kit casquillo sello	kit bucha vedante
31	Kit tiranti	Tie rods kit	Kit tirants	Zugstangen [Satz]	Kit tirantes	Kit tirantes
32	Supporto inferiore	Bearing spider	Support inférieur	Untere Lagerung	Soporte inferior	Soporte inferior
34	Kit parti di usura	Wear parts kit	Kit parties d'usure	Verschleißteile [Satz]	Kit piezas de desgaste	Kit peças desgastáveis
35	Anello per camicia	Ring for sleeve	Bague pour bouchon	Ring für Gehäuse	Anillo para camisa	Anel para camisa
N.	Beschrijving nl	Περιγραφή el	Açıklama tr	Kuvaus fi	Описание ru	Opis pl
1	Motor	Πλήρης κινητήρας	Motor	Moottori	Двигатель	Silnik
2	Lantaarnstuk	Μπρακέτο	Adaptör	Sovitlin	Крестовина	Plasta
4	Pluggen	Σετ ταπών	Tapalar	Tulpat	Пробки	Zatyczki
5	Dichtingssteunplaat	Δίσκος μηχανικού στυπιοθλίπτη	Sızdırmazlık elemanı diski	Tiivisteen kannatuslevy	Пластина держателя прокладки	Tarcza uszczelki
6	Bovenste kop	Κεφαλή αντλίας	Üst kafa	Yläkansi	Верхняя головка	Głowica górna
7	Veer	Έλασμα	Yay	Jousi	Пружина	Sprężyna
8	Waaier met verkleinde diameter	Πτερύγιο μειωμένης διαμέτρου	Küçük boylu pompa rotoru	Pieni juoksupyörä	Уменьшенное рабочее колесо	Wirnik niepełny
9	Volle waaier	Πτερύγιο πλήρους διαμέτρου	Tam boylu pompa rotoru	Täydellinen juoksupyörä	Полное рабочее колесо	Wirnik pełny
10	Mantel	Κέλυφος	Gömlek	Muhvi	Муфта	Plaszcz
11	As	Άξονας	Mil	Akseli	Вал	Wał
12	Borgdeksel bus	Καπάκι ασφάλισης αντιτριβικού δακτυλίου	Yatak kilitleme kapağı	Holkin kiinnityskansi	Крышка блокировки втулки	Pokrywa blokująca tuleję
14	Pomphuis	Σώμα αντλίας	Pompa gövdesi	Pumpun runko	Корпус насоса	Korpus pompy
15	Diffusor	Πτερύγιο εκτροπής	Difüzör	Diffusori	Диффузор	Dyfuzor
18	Adapterring	Δακτύλιος προσαρμογής	Adaptör halkası	Sovitusrengas	Переходное кольцо	Pierścień pośredni
19	Kit met schroeven	Σετ βιδών	Vida kiti	Ruuisarja	КОМПЛЕКТ винтов	Zestaw wkrętów
20	Set mech. asafdichting + O-ring	Μηχανικός στυπιοθλίπτης και ροδέλες στεγανοποίησης	Mekanik salmastra kiti + O-Ring	Mek. tiiviste + O-rengassarja	Комплект мех.прокладки + OR	Zestaw uszcz.mech. + OR
21	Set O-ringafdichtingen	Σετ ροδέλες στεγανοποίησης	O-Ring kiti	O-rengassarja	Комплект кольцевых прокладок OR	Zestaw uszczelki OR
22	Set Slijtringen	Σετ δακτύλιοι τριβής	Aşınma halkaları kiti	Kulumisrenkaiden sarja	изнашиваемые кольца тяг	Zestaw pierścieni wymiennych
23	Hijs ringen	Άρση δακτυλίδι	Cihaz kaldırma	Nostorengas	Подъемные кольца	Pierścienie podnoszenia
26	Set koppelingshelften	Σετ σταθερού συνδέσμου	Çift yarım manşon kiti	Liitinsarja	Комплект пары полумуфт	Zestaw pary półzłącz
27	Set koppelingsbescherming	Καλύμματα προστασίας σταθερού συνδέσμου	Manşon koruma kiti	Liitoksen suojuksarja	Комплект защиты муфт	Zestaw ochronny złącza
28	Set druklagertrommel	Σετ ωπτικού εμβόλου	Basinç yatağı tambur kiti	Rumpusarja	Комплект упорного барабана	Zestaw bębna łożyska oporowego
29	Set waaierblokkeringen	Σετ ασφάλισης πτερυγίων	Pompa rotorlarını sabitleme kiti	Juoksupyörrien kiinnityssarja	Комплект блокировки раб. колес	Zestaw blokujący wirniki
30	Set afdichtingsbus	Σετ κουζινέτου μηχανικού στυπιοθλίπτη	Sızdırmazlık elemanı burcu kiti	Holkki- ja tiivistesarja	Комплект втулки уплотнения	Zestaw busoli uszczel.
31	Set trekstangen	Σετ ράβδων σύνδεσης	Gergi çubuğu kiti	Vetotankosarja	Комплект тяг	Zestaw napinaczy
32	Onderste steun	Κάτω φορέας	Alt segman braket	Alakannatin	Нижняя опора	Dolny wspornik
34	Set slijtonderdelen	Σετ δακτυλίων τριβής	Aşınma parçaları kiti	Kulumisosisien sarja	Комплект изнашиваемых частей	Zestaw części podł. zużyciu
35	Ring voor mantel	Δακτύλιος για χιτώνιο	Gömlek halkası	Muhvirengas	Кольцо для муфты	Pierścień do plaszcz

125SVG 2 Pole 60 Hz (125SVG/D: motors IE3 fitted)

ELP 2 P 60						
G - Version	125SV1G1506	125SV2/2AG2206	125SV3/3BG3006	125SV3G3706	125SV4/4AG4506	125SV5/5AG5506
T IE2 ~>	101588001	101588011	101588031	101588041	101588051	101588061
T IE3 ~>	101698001	101698011	101698031	101698041	101698051	101698061

Single Unit and Kit

10	Sleeve A304 PN25	166442750	166442760	166442770	166442770	166442780	166442790
11	Shaft A431	165045880	165045890	165045900	165045900	165045910	165045920
31	Tie rods kit SVF	KL22AXB	KL22AXC	KL22AXD	KL22AXD	KL22AXE	KL22AXF

Motor, Coupling, Motor Adaptor

**1	kW ->	15.0	22.0	30.0	37.0	45.0	55.0
	Mot. 2P, 3- ->	50024PB00	50026PE00	107242103	107242203	107242303	107242403
	Mot. 2P, 3- ->	50A24PB00	50A26PE00	107242603	107242703	107242803	107242903
2	Adaptor	161453660	161453660	161453680	161453680	161453700	161453710
23	Lifting ring	161441060	161441060	161441070	161441070	161441070	161441070
26	Coupling	KL10AAD	KL10AAE	KL10AAF	KL10AAF	KL10AAF	KL10AB1
27	Coupling guard	KL33AAC	KL33AAC	KL33AAC	KL33AAC	KL33AAC	KL33AAC

Wear parts, pump body

		125SV1	125SV2	125SV3	->125SV5
drum, impeller stop, impeller locking		1 bearing no drum	2 bearing no drum	2 bearing drum	3 bearing drum
*34	Wear parts Kit	KL35AFD	KL35AFE	KL35AFF	KL35AFG
14	Pump body	PN16	161353800	161353800	161353800
		PN25-40	-	-	-
22	Kit wear rings	KL03ACH	KL03ACH	KL03ACH	KL03ACH
28	Drum	EPDM	-	KL41AAC	KL41AAC
		FPM	-	KL41AAF	KL41AAF
		FEP	-	KL41AAU	KL41AAU
29	Impeller locking	KL41AAG	KL41AAG	-	-

Mechanical seal D22 + sleeve OR

*20	Materials ->	Q1BEGG	KL01AC0	STD -> Q1BEGG - OR EPDM
		Q1Q1EGG	KL01AC1	
		Q1BVGG	KL01AC2	
		Q1Q1VGG	KL01AC3	
		Q1CTGG	KL01AC5	
		Q1Q1TGG	KL01AC6	

Common, Single Unit and Kit

4	Plugs	EPDM	KL34AAF
		FPM	KL34AAG
		FEP	KL34AAH
5	Seal housing plate	160150260	
6	Upper head	161453760	
7	Spring	169100210	
*8	Reduced impeller A	160704410	
*8	Reduced impeller B	160704420	
*9	Full impeller	160704400	
12	Bush locking cover	164002340	
15	Diffuser A304	162801800	
18	Adapter ring	168602040	
19	Screws kit	KL40AAA	
*21	OR	EPDM	KL02AAC
		FPM	KL02AAF
		FEP	KL02AA9
30	Bush seal	KL41AAH	
32	Bearing spider, lower	161441350	
35	Ring for sleeve	-	Since 7 Stages

* Recommended spare parts - Parti di ricambio consigliate

* Pièces détachées conseillées - Empfohlene Ersatzteile

** Motor spare parts: see motor lists - Parti di ricambio motore: vedi liste motore

** Pièces détachées Moteur : voir listes moteur - Motor-Ersatzteile: gem. Motorlisten

125SVG_6_June11_EdC

125SVG 4 Pole 60 Hz (125SVG/D: motors IE3 fitted)

ELP 4 P 60								
G - Version	125SV1G02246	125SV2/2AG03046	125SV3/3BG04046	125SV4/4AG05546	125SV5/5AG07546	125SV6G11046	125SV7G11046	125SV8G15046
T IE2 ~>	101588201	101588211	101588221	101588231	101588241	101588251	101588261	101588271
T IE3 ~>	101698201	101698211	101698221	101698231	101698241	101698251	101698261	101698271

Single Unit and Kit

10	Sleeve A316 PN2	166442750	166442760	166442770	166442780	166442790	166442800	KL13AAG	KL13AAH
11	Shaft A431	165045880	165045890	165045900	165045910	165045920	165045930	165045940	165045950
31	Tie rods kit SVF	KL22AXB	KL22AXC	KL22AXD	KL22AXE	KL22AXF	KL22AXG	KL22AXH	KL22AXK

Motor, Coupling, Motor Adaptor

**1	kw ->	2,2	3,0	4,0	5,5	7,5	11	15
	Mot. 4P, 3~, IE2->	50010PD00	50011PD00	50015PD00	50020PB00	50021PB00	50027PB00	50028PB00
	Mot. 4P, 3~, IE3->	50A10PD00	50A11PD00	50A15PD00	50A20PB00	50A21PB00	50A27PB00	50A28PB00
2	Adaptor	161453620	161453620	161453620	161453640	161453640	161453660	161453660
23	Lifting ring	-	-	161441050	161441050	161441050	161441060	161441060
26	Coupling	KL10AAB	KL10AAB	KL10AAB	KL10AAC	KL10AAC	KL10AAD	KL10AAD
27	Coupling guard	KL33AAA	KL33AAA	KL33AAA	KL33AAB	KL33AAB	KL33AAC	KL33AAC

Wear parts, pump body drum, impeller stop, impeller locking		125SV1	125SV2	125SV3	->125SV5	->125SV7	125SV8
		1 bearing no drum	2 bearing no drum	2 bearing drum	3 bearing drum	4 bearing drum	5 bearing drum
*34	Wear parts Kit	KL35AFD	KL35AFE	KL35AFF	KL35AFG	KL35AFH	KL35AFK
14	Pump body	PN16 161353800	161353800	161353800	161353800	161353800	-
		PN25-40	-	-	-	-	161353810
22	Kit wear rings	KL03ACH	KL03ACH	KL03ACH	KL03ACH	KL03ACH	KL03ACH
28	Drum	EPDM	-	-	KL41AAC	KL41AAC	KL41AAC
		FPM	-	-	KL41AAF	KL41AAF	KL41AAF
		FEP	-	-	KL41AAU	KL41AAU	KL41AAU
29	Impeller locking	KL41AAG	KL41AAG	-	-	-	-

Mechanical seal D22 + sleeve OR

*20	Materials ->	Q1BEGG	KL01AC0	STD -> Q1BEGG - OR EPDM
		Q1Q1EGG	KL01AC1	
		Q1BVGG	KL01AC2	
		Q1Q1VGG	KL01AC3	
		Q1CTGG	KL01AC5	
		Q1Q1TGG	KL01AC6	

Common, Single Unit and Kit

4	Plugs	EPDM	KL34AAF	
		FPM	KL34AAG	
		FEP	KL34AAH	
5	Seal housing plate		160150260	
6	Upper head		161453760	
7	Spring		169100210	
*8	Reduced impeller type A		160704410	
*8	Reduced impeller type B		160704420	
*9	Full impeller		160704400	
12	Bush locking cover		164002340	
15	Diffuser		162801800	304SS
18	Adapter ring		168602040	
19	Screws kit		KL40AAA	
*21	OR	EPDM	KL02AAC	
		FPM	KL02AAF	
		FEP	KL02AA9	
30	Bush seal		KL41AAH	
32	Bearing spider, lower		161441350	
35	Ring for sleeve		168602140	Since 7 Stages

* Recommended spare parts - Parti di ricambio consigliate

* Pièces détachées conseillées - Empfohlene Ersatzteile

** Motor spare parts: see motor lists - Parti di ricambio motore: vedi liste motore

** Pièces détachées Moteur : voir listes moteur - Motor-Ersatzteile: gem. Motorlisten