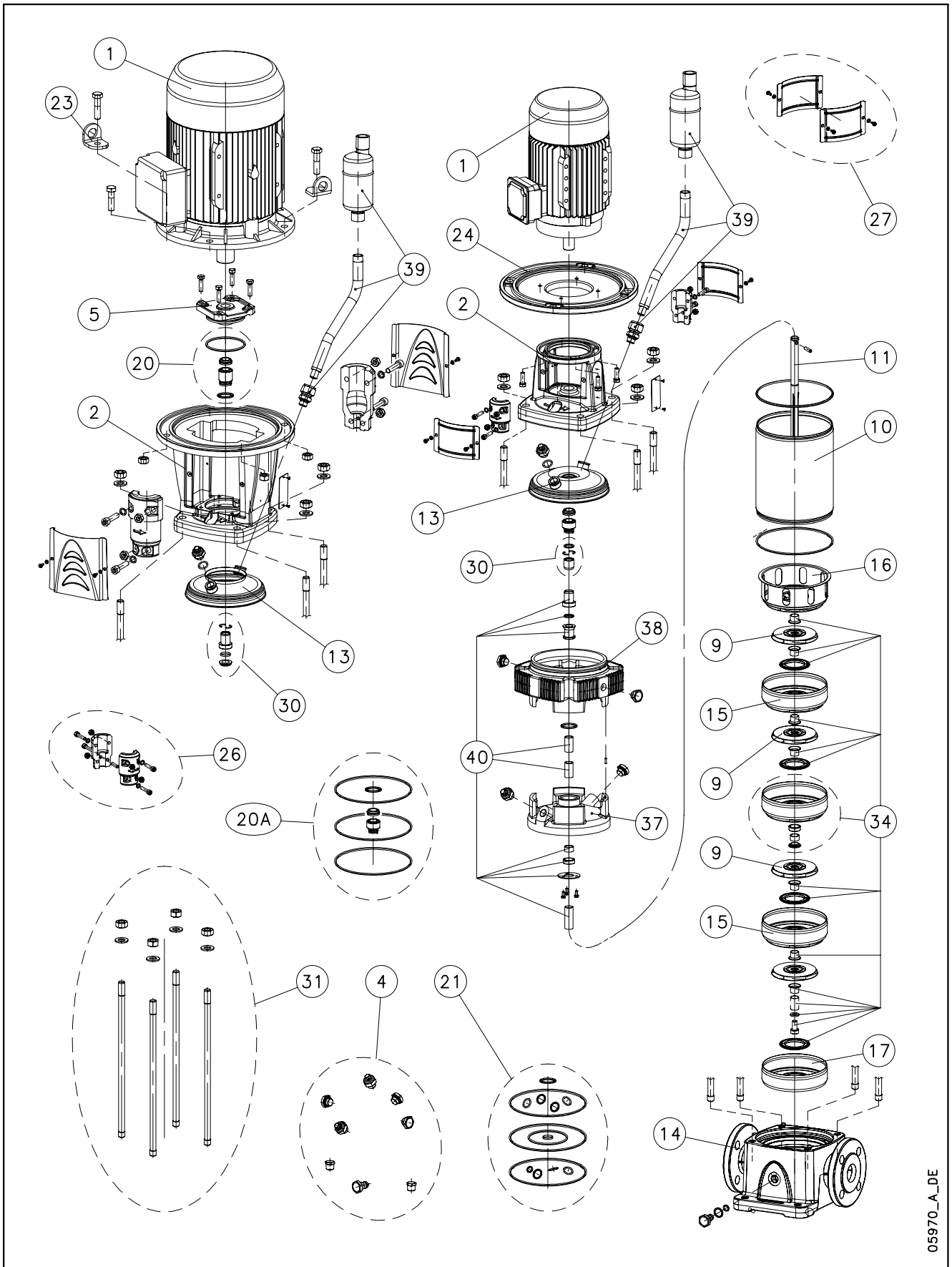


1, 3, 5, 10, 15, 22 SV.B (180°C)



05970_A_DE

Lowara, Vogel Pumpen are trademarks of Xylem Inc. or one of its subsidiaries. Goulds is a registered trademark of Goulds Pumps, Inc. and is used under license.

N.	Descrizione It	Description en	Description fr	Beschreibung de	Descripción es	Descrição pt
	1-22SV..B (180 °C)					
1	Motore	Motor	Moteur	Motor	Motor	Motor
2	Lanterna	Adaptor	Lanterne	Motorlaterne	Adaptador	Adaptador
3	Base	Basement	Base	Untersatz	Base	Base
4	Tappi	Plugs	Bouchons	Stopfen	Tapones	Tampões
5	Portatenuta superiore	Upper holder	Disque supérieure	Oberer dichtungsdeckel	Disco superior	Disco superior
9	Girante	Impeller	Roue	Laufrad	Rodete	Impulsor
10	Camicia	Sleeve	Chemise	Gehäuse	Camisa	Camisa
11	Albero	Shaft	Arbre	Welle	Árbor	Veio
13	Disco porta tenuta	Seal housing disc	Disque de garniture	Dichtungsdeckel	Disco de alojamiento sello	Disco porta-vedante
14	Corpo pompa	Pump body	Corps de pompe	Pumpengehäuse	Caja bomba	Corpo da bomba
15	Diffusore	Diffuser	Diffuseur	Diffusor	Difusor	Difusor
16	Diffusore finale	Last stage diffuser	Diffuseur dernier étage	Enddiffusor	Difusor final	Difusor final
17	Scatola stadio iniziale	Initial stage box	Box premier étage	Erste Stufe Diffusor	Caja etapa inicial	Carcaça primeira célula
20 - 20A	Kit tenuta mecc. + OR	Mechanical seal + OR kit	Kit garniture mec. + joints toriques	Gleitringdichtung + O-Ring [Satz]	Kit sello mec. + junta tórica	Kit vedante mec. + OR
21	Kit guarnizioni OR	O ring kit	Kit joints toriques	Dichtungssatz	Kit juntas tóricas	Kit guarnições OR
23	Staffa sollevamento	Lifting bracket	Support de levage	Hebeösen	Soporte de elevación	Suporte de suspensão
24	Flangia motore	Motor flange	Bride moteur	Motorflansch	Brida motor	Flange motor
26	Kit coppia di semigiunti	Pair of half coupling kit	Kit paire de demi-manchons	Kupplung [Satz]	Kit par de semijuntas	Kit par de semi-juntas
27	Kit protezione giunto	Coupling guard kit	Kit protection manchon	Kupplungsschutz [Satz]	Kit protección junta	Kit protecção junta
30	Kit bussola tenuta	Bush seal kit	Kit douille garniture	Gleitringdichtungsarretierung und mitnehmer	Kit casquillo sello	kit bucha vedante
31	Kit tiranti	Tie rods kit	Kit tirants	Zugstangen [Satz]	Kit tirantes	Kit tirantes
34	Kit parti di usura	Wear parts kit	Kit parties d'usure	Verschleißteile [Satz]	Kit piezas de desgaste	Kit peças desgastáveis
37	Camera sup. HT	Upper chamber HT	Chambre supérieur HT	Obere Kammer HT	Cámara superior HT	Câmara superior HT
38	Camera inf. HT.	Lower chamber HT	Chambre inférieur HT	Untere Kammer HT	Cámara inferior HT	Câmara inferior HT
39	Eliminatore aria	Air Vent	Purgeur d'Air	Luft-Entlüfter	Purgador de Aire	Purgador de ar
40	Kit distanziali per albero	Kit spacers for shaft	Kit entretoises pour arbre	Distanzstücken für Welle [Satz]	Kit distanciadores para eje	Kit distanciadores para eixo
HT	Alta Temperatura	High Temperature	Haute Température	Hochtemperatur	Altas Temperaturas	Temperatura Elevada
N.	Beschrijving nl	Περιγραφή el	Açıklama tr	Kuvvas fi	Описание ru	Opis pl
	1-22SV..B (180 °C)					
1	Motor	Πλήρης κινητήρας	Motor	Moottori	Двигатель	Silnik
2	Lantaarnstuk	Μπρακέτο	Adaptör	Sovitin	Крестовина	Piasta
3	Pompvoet	Βάση	Kaide	Perusta	Основание	Podstawa
4	Pluggen	Σετ ταπών	Tapalar	Tulpat	Пробки	Zatyczki
5	Bovenste plaat	Ανώτερος Δίσκος	Üst disk	Ylempi levy	Верхний держатель дисков	Tarcza górna
9	Waaier	στροφέο	Pompa rotoru	Juoksupyörä	рабочее колесо	Wirnik
10	Mantel	Κέλυφος	Gömlek	Muhvi	Муфта	Plaszcz
11	As	Άξονας	Mil	Akseli	Вал	Wał
13	Dichtingssteunplaat	Δίσκος μηχανικού στυπιοθλιπτή	Sızdırmazlık elemanı disk	Tiivisteen kannatuslevy	Пластина держателя прокладки	Tarcza uszczelki
14	Pomphuis	Σώμα αντλίας	Pompa gövdesi	Pumpun runko	Корпус насоса	Korpus pompy
15	Diffusor	Πτερύγιο εκτροπής	Difüzör	Diffusori	Диффузор	Dyfuzor
16	Diffusor laatste trap	Τελευταίο πτερύγιο εκτροπής	Son difüzör	Loppuvaiheen diffuusori	Конечный диффузор	Dyfuzor końcowy
17	Kast eerste trap	Πρώτο πτερύγιο εκτροπής	İlk kademe kutusu	Ensivaiheen laatikko	Коробка начальной стадии	Skrzynka początkowego stadium
20-20A	Set mech. asafdichting + O-ring	Μηχανικός στυπιοθλιπτής και ροδέλες στεγανοποίησης	Mekanik salmastra kiti + O-Ring	Mek. tiiviste + O-rengassarja	Комплект мех.прокладки + OR	Zestaw uszcz. mech. + OR
21	Set O-ringafdichtingen	Σετ ροδέλες στεγανοποίησης	O-Ring kiti	O-rengassarja	Комплект кольцевых прокладок OR	Zestaw uszczelkek OR
23	Hijs steun	Άρση αγκύλη	Dirsek Kaldırma	Nosto ylätuki	Подъемные кронштейн	Podnoszenia wspornik
24	Motorflens	Μπρακέτο κινητήρα	Motor flanşı	Moottorin laippa	Фланец двигателя	Kolnierz silnika
26	Set koppelingshelften	Σετ σταθερού συνδέσμου	Çift yanm manşon kiti	Liitinsarja	Комплект пары полумуфт	Zestaw pary półzłączy
27	Set koppelingsbescherming	Καλύμματα προστασίας σταθερού συνδέσμου	Manşon koruma kiti	Liitoksen suojuussarja	Комплект защиты муфт	Zestaw ochronny złączy
30	Set afdichtingsbus	Σετ κουζινέτου μηχανικού στυπιοθλιπτή	Sızdırmazlık elemanı burcu kiti	Holkki ja tiiviste	Комплект втулки уплотнения	Zestaw busoli uszczel.
31	Set trekstangen	Σετ ράβδων σύνδεσης	Gergi cubuğu kiti	Vetotankosarja	Комплект тяг	Zestaw napinaczy
34	Set slijtonderdelen	Σετ δακτυλίων τριβής	Aşınma parçaları kiti	Kulumisosien sarja	Комплект изнашиваемых частей	Zestaw części podł. zużyciu
37	Bovenste kamer HT	Άνω Θάλαμος HT	Üst kamera HT	Ylempi kammio HT	Верхняя Камера HT	Górna komora HT
38	Onderste kamer HT	Κάτω Θάλαμος HT	Alt kamera HT	Alempi kammio HT	нижний Камера HT	Dolny komora HT
39	Ontluchters	Αεραγωγό	Hava boşaltma deliği	Ilma venttiilin	Выход воздуха	Powietrza ujście
40	Set afstandsstukken des as	Σετ αποστάτες για τον άξονα	Milî için ara halkası Kiti	Välilevyt akselin sarja	Комплект распорки для вал	Zestaw dystansowa dla wał
HT	Hoge Temperaturen	Υψηλής θερμοκρασίας	Yüksek isi	Korkea lämpötila	Высокая температура	Wysokiej Temperatury

1SV NB 2 Pole 60Hz (1SVNB/D: motors IE3 fitted)

ELP 2 P 60Hz											
N Version	1SV02NB0036	1SV03NB0036	1SV04NB0036	1SV05NB0056	1SV06NB0056	1SV07NB0076	1SV08NB0076	1SV09NB0076	1SV10NB0116	1SV11NB0116	
	M ~>	1016L606W	1016L607W	1016L608W	1016L609W	1016L610W	1016L611W	1016L612W	1016L613W	1016L614W	1016L615W
	T(IE1-IE2) ~>	1016L471W	1016L472W	1016L473W	1016L474W	1016L475W	1016L476W	1016L477W	1016L478W	1016L479W	1016L480W
	T(IE1-IE3) ~>	1016L471W	1016L472W	1016L473W	1016L474W	1016L475W	1016LG76W	1016LG77W	1016LG78W	1016LG79W	1016LG80W
	M ~>	1SV12NB0116	1SV13NB0116	1SV15NB0156	1SV17NB0156	1SV18NB0226	1SV20NB0226	1SV22NB0226	1SV24NB0226	1SV26NB0226	
	T(IE2) ~>	1016L616W	1016L617W	1016L619W	1016L621W	1016L622W	1016L624W	1016L626W	1016L628W	1016L630W	
	T(IE3) ~>	1016L481W	1016L482W	1016L484W	1016L486W	1016L487W	1016L489W	1016L491W	1016L493W	1016L495W	
		1016L481W	1016L482W	1016LA83W	1016LA85W	1016LA86W	1016LA88W	1016LA90W	1016LA92W	1016LA94W	
		1016LG81W	1016LG82W	1016LG84W	1016LG86W	1016LG87W	1016LG89W	1016LG91W	1016LG93W	1016LG95W	

Single Unit and Kit

10	Sleeve N	156502422	156502422	156502442	156502452	156502462	156502482	156502502	156502522	156502532	156502542
		156502562	156502582	156502612	156502642	156502662	156502692	156502722	156502762	156502782	
11	Shaft A316	165050122B	165050122B	165050142B	165050152B	165050162B	165050182B	165050202B	165050222B	165050232B	165050242B
		165050262B	165050282B	165050312B	165050342B	165050362B	165050392B	165050422B	165050462B	165050482B	
31	Tie rods SVN kit D12	KL22AUR	KL22AUR	KL22AUS	KL22AUT	KL22AUU	KL22AUV	KL22AUW	KL22AUX	KL22AUZ	KL22AUZ
		KL22AU0	KL22AVG	KL22AU2	KL22AU4	KL22AU5	KL22AU6	KL22AU7	KL22AU8	KL22AVA	

Motor, Coupling, Motor adaptor

Motor power kW >	0,37	0,37	0,37	0,55	0,55	0,75	0,75	0,75	1,1	1,1
	1,1	1,1	1,5	1,5	2,2	2,2	2,2	2,2	2,2	2,2

**1	kW >	0,37	0,55	0,75	1,1	1,5	2,2
	Motor 2P, 1 ~>	107231020	107231040	107231100	107231120	107231140	50004FD00
	Motor 2P, 3~ IE2 since 0,75kW	107230060	107230080	107230153	107230503	50000PD00	50001PD00
		107230060	107230080	107230153	107230503	107240010	107240510
	Motor 2P, 3~ IE3 since 0,75kW	107230060	107230080	107234001	107234011	107234021	50A01PD00
2	Adaptor	161471050	161471050	161471060	161471060	161471070	161471070
23	Lifting bracket	-	-	-	-	-	-
26	Coupling	KL10ABC	KL10ABC	KL10ABD	KL10ABD	KL10ABE	KL10ABE
27	Coupling guard	KL33AAM	KL33AAM	KL33AAN	KL33AAN	KL33AAP	KL33AAP
39	Air Vent MOT B14	KL38AAB	KL38AAB	KL38AAB	KL38AAB	KL38AAB	KL38AAB

Wear Parts kit

up to model (->)	-> 1SV10	-> 1SV20	-> 1SV27	
*34	1 bearing	2 bearing	3 bearing	
*34	Wear parts	KL35AEX	KL35AEY	KL35AEZ

Mech seal Kit : Seal + sleeve OR

*20A	Materials->	Q1AEGG	KL01AEY	Mech seal std Balanced HT D12 + sleeve OR HT
		Q1AVGG	KL01AEZ	
		Q1Q1VGG	KL01AE0	

Common, Single Unit and kit

4	Plugs	EPDM HT	KL34AAX	
5	Upper holder		-	
*9	Impeller 1SV A304		150703602	
13	Seal housing disc		150102932	
14	Pump body	161303352	-> 1-5SVN	PN25-40
15	Diffuser	152803112		
17	First stage box	152802912		
*21	OR	EPDM HT	KL02AB9	
24	Motor flange		-	
30	Bush seal kit EPDM HT		KL41AA4	
	Bush seal kit FPM		KL41AA5	
36	Final diffuser	152803012		
37	Lower (seal) chamber HT	161441552		
38	Upper (seal) chamber HT	161441512		
40	Kit spacers for shaft		KL07AAA	

* Recommended spare parts - Parti di ricambio consigliate

* Pièces détachées conseillées - Empfohlene Ersatzteile

** Motor spare parts: see motor lists - Parti di ricambio motore: vedi liste motore

** Pièces détachées Moteur : voir listes moteur - Motor-Ersatzteile: gem. Motorlisten

3SV NB 2 Pole 60Hz (3SVNB/D: motors IE3 fitted)

ELP 2 P 60Hz										
N Version	3SV02NB0036	3SV03NB0056	3SV04NB0076	3SV05NB0116	3SV06NB0116	3SV07NB0116	3SV08NB0156	3SV09NB0156	3SV10NB0226	3SV11NB0226
M ->	1016L636W	1016L637W	1016L638W	1016L639W	1016L640W	1016L641W	1016L642W	1016L643W	1016L644W	1016L645W
T(IE1-IE2) ->	1016L503W	1016L504W	1016L505W	1016L506W	1016L507W	1016L508W	1016L509W	1016L510W	1016L511W	1016L512W
T(IE1-IE3) ->	1016L503W	1016L504W	1016LH05W	1016LH06W	1016LH07W	1016LH08W	1016LH09W	1016LH10W	1016LH11W	1016LH12W
	3SV12NB0226	3SV13NB0226	3SV14NB0226	3SV15NB0306	3SV17NB0306	3SV19NB0306	3SV21NB0406			
M ->	1016L646W	1016L647W	1016L648W							
T(IE2) ->	1016L513W	1016L514W	1016L515W	1016L516W	1016L518W	1016L520W	1016L522W			
	1016LB06W	1016LB07W	1016LB08W	1016LB09W	1016LB11W	1016LB13W	1016L522W			
T(IE3) ->	1016LH13W	1016LH14W	1016LH15W	1016LH16W	1016LH18W	1016LH20W	1016LH2W			

Single Unit and Kit

10	Sleeve A316	156502422	156502422	156502442	156502452	156502462	156502482	156502502	156502522	156502532	156502542
		156502562	156502582	156502602	156502612	156502642	156502682	156502702			
11	Shaft A316	165050122B	165050122B	165050142B	165050152B	165050162B	165050182B	165050202B	165050222B	165050232B	165050242B
		165050262B	165050282B	165050302B	165050312B	165050342B	165050382B	165050402B			
31	Tie rods SVN kit D12	KL22AUR	KL22AUR	KL22AUS	KL22AUT	KL22AUU	KL22AUW	KL22AUW	KL22AUX	KL22AUY	KL22AUZ
		KL22AU0	KL22AVG	KL22AU1	KL22AU2	KL22AU4	KL22AVH	KL22AVK			

Motor, Coupling, Motor adaptor

Motor power kW >	0,37	0,55	0,75	1,1	1,1	1,1	1,5	1,5	2,2	2,2
	2,2	2,2	2,2	3,0	3,0	3,0	4,0			

**1	kW >	0,37	0,55	0,75	1,1	1,5	2,2	3,0	4,0
	Motor 2P, 1 ~>	107231020	107231040	107231100	107231120	107231140	50004FD00		
	Motor 2P, 3~ IE2 since 0,75kW	107230060	107230080	107230153	107230503	50000PD00	50001PD00	50002PF00	50008PG00
		107230060	107230080	107230153	107230503	107240010	107240510	107241010	50008PG00
	Motor 2P, 3~ IE3 since 0,75kW	107230060	107230080	107234001	107234011	107234021	50A01PD00	50A02PF00	50A08PL00
2	Adaptor	161471050	161471050	161471060	161471060	161471070	161471070	161471080	161471080
23	Lifting bracket	-	-	-	-	-	-	-	-
26	Coupling	KL10ABC	KL10ABC	KL10ABD	KL10ABD	KL10ABE	KL10ABE	KL10ABF	KL10ABK
27	Coupling guard	KL33AAM	KL33AAM	KL33AAN	KL33AAN	KL33AAP	KL33AAP	KL33AAQ	KL33AAQ
39	Air Vent MOT B14	KL38AAB	KL38AAB	KL38AAB	KL38AAB	KL38AAB	KL38AAB	KL38AAB	KL38AAB

Wear Parts kit

up to model (->)	-> 3SV10	-> 3SV20	-> 3SV27
*34 Wear parts	1 bearing	2 bearing	3 bearing
	KL35AEX	KL35AEY	KL35AEZ

Mech seal Kit : Seal + sleeve OR

*20	Materials ->	Q1AEGG	KL01AEY	Mech seal std Balanced HT D12 + OR HT
		Q1AVGG	KL01AEZ	
		Q1Q1VGG	KL01AE0	

Common, Single Unit and kit

4	Plugs	EPDM HT	KL34AAX
5	Upper holder		-
*9	Impeller 3SV A304		150703612
13	Seal housing disc		150102932
14	Pump body	161303352	-> 1-5SVN PN25-40
15	Diffuser	152803112	
17	First stage box	152802912	
*21	OR	EPDM HT	KL02AB9
24	Motor flange		-
30	Bush seal kit EPDM HT		KL41AA4
	Bush seal kit FPM		KL41AA5
36	Final diffuser	152803012	
37	Lower (seal) chamber HT	161441552	
38	Upper (seal) chamber HT	161441512	
40	Kit spacers for shaft	KL07AAA	

* Recommended spare parts - Parti di ricambio consigliate

* Pièces détachées conseillées - Empfohlene Ersatzteile

** Motor spare parts: see motor lists - Parti di ricambio motore: vedi liste motore

** Pièces détachées Moteur : voir listes moteur - Motor-Ersatzteile: gem. Motorlisten

5SV NB 2 Pole 60Hz (5SVNB/D: motors IE3 fitted)

Production date > July 2012

ELP 2 P 60										
N Version	5SV02NB005	5SV03NB007	5SV04NB011	5SV05NB015	5SV06NB015	5SV07NB022	5SV08NB022	5SV09NB022	5SV10NB030	5SV11NB030
M ->	1016L654W	1016L655W	1016L656W	1016L657W	1016L658W	1016L659W	1016L660W	1016L661W		
T(IE1-IE2) ->	1016L530W	1016L531W	1016L532W	1016L533W	1016L534W	1016L535W	1016L536W	1016L537W	1016L538W	1016L539W
	1016L530W	1016L531W	1016L532W	1016LB18W	1016LB19W	1016LB20W	1016LB21W	1016LB22W	1016LB23W	1016LB24W
T(IE1-IE3) ->	1016L530W	1016LH31W	1016LH32W	1016LH33W	1016LH34W	1016LH35W	1016LH36W	1016LH37W	1016LH38W	1016LH39W
	5SV12NB030	5SV13NB040	5SV14NB040	5SV15NB040	5SV16NB040	5SV17NB055	5SV19NB055	5SV21NB055		
M ->										
T(IE2) ->	1016L540W	1016L541W	1016L542W	1016L543W	1016L544W	1016L545W	1016L547W	1016L549W		
	1016LB25W	1016L541W	1016L542W	1016L543W	1016L544W	1016L545W	1016L547W	1016L549W		
T(IE3) ->	1016LH40W	1016LH41W	1016LH42W	1016LH43W	1016LH44W	1016LH45W	1016LH47W	1016LH49W		

Single Unit and Kit

10	Sleeve A316	156502412	156502432	156502452	156502472	156502492	156502512	156502532	156502552	156502572	156502592
		156502612	156502632	156502652	156502672	156502692	156502712	156502732	156502752	156502772	
11	Shaft A316	165050112B	165050132B	165050152B	165050172B	165050192B	165050212B	165050232B	165050252B	165050272B	165050292B
		165050312B	165050332B	165050352B	165050372B	165050392B	165050332B	165050372B	L=710		
31	Tie rods SVN kit D12	KL22AVT	KL22AVU	KL22AUT	KL22AVV	KL22AVW	KL22AVX	KL22AUY	KL22AVY	KL22AVZ	KL22AV0
		KL22AU2	KL22AV7	KL22AV1	KL22AV8	KL22AU6	KL22AV2	KL22AV3	KL22AV4		

Motor, Coupling, Motor adaptor

Motor power kW >	0,55	0,75	1,1	1,5	1,5	2,2	2,2	2,2	3,0	3,0
	3,0	4,0	4,0	4,0	4,0	5,5	5,5	5,5		

**1	kW >	0,37	0,55	0,75	1,1	1,5	2,2	3,0	4,0	5,5
	Motor 2P, 1 ->	107231020	107231040	107231100	107231120	107231140	50004FD00			
	Motor 2P, 3- IE2 since 0,75kW	107230060	107230080	107230153	107230503	50000PD00	50001PD00	50002PF00	50008PG00	50013PE00
		107230060	107230080	107230153	107230503	107240010	107240510	107241010	50008PG00	50013PE00
	Motor 2P, 3- IE3 since 0,75kW	107230060	107230080	107234001	107234011	107234021	50A01PD00	50A02PF00	50A08PL00	50A13PE00
2	Adaptor	161471050	161471050	161471060	161471060	161471070	161471070	161471080	161471080	161471080
23	Lifting bracket	-	-	-	-	-	-	-	-	161441050
26	Coupling	KL10ABC	KL10ABC	KL10ABD	KL10ABD	KL10ABE	KL10ABE	KL10ABF	KL10ABK	KL10ABL
27	Coupling guard	KL33AAM	KL33AAM	KL33AAN	KL33AAN	KL33AAP	KL33AAP	KL33AAQ	KL33AAQ	KL33AAQ
39	Air Vent MOT B14	KL38AAB	KL38AAB	KL38AAB	KL38AAB	KL38AAB	KL38AAB	KL38AAB	KL38AAB	KL38AAC

Wear Parts kit

up to model (->)	-> 5SV08	-> 5SV16	-> 5SV22	
	1 bearing	2 bearing	3 bearing	
*34	Wear parts	KL35AE2	KL35AE3	KL35AE4

Mech seal Kit : Seal + sleeve OR

*20	Materials ->	Q1AEGG	KL01AEY	Mech seal std Balanced HT D12 + OR HT
		Q1AVGG	KL01AEZ	
		Q1Q1VGG	KL01AE0	

Common, Single Unit and kit

4	Plugs	EPDM HT	KL34AAX	
5	Upper holder		-	
*9	Impeller 5SV A304		150703622	
13	Seal housing disc		150102932	
14	Pump body		161303352	-> 1-5SVN PN25-40
15	Diffuser		152803122	
17	First stage box		152802922	
*21	OR	EPDM HT	KL02AB9	
24	Motor flange		161050700	1-3-5SV 5,5 kW
30	Bush seal kit EPDM HT		KL41AA4	
	Bush seal kit FPM		KL41AA5	
36	Final diffuser		152803022	
37	Lower (seal) chamber HT		161441552	
38	Upper (seal) chamber HT		161441512	
40	Kit spacers for shaft		KL07AAA	

* Recommended spare parts - Parti di ricambio consigliate

* Pièces détachées conseillées - Empfohlene Ersatzteile

** Motor spare parts: see motor lists - Parti di ricambio motore: vedi liste motore

** Pièces détachées Moteur : voir listes moteur - Motor-Ersatzteile: gem. Motorlisten

1-22SVNB_6_July12_EdC

10SV NB 2 Pole 60Hz (10SVNB/D: motors IE3 fitted)

ELP 2P 60		10SV01NB007	10SV02NB015	10SV03NB022	10SV04NB030	10SV05NB040	10SV06NB040	10SV07NB055	10SV08NB055	10SV09NB075	10SV10NB075
N Version	M ~>	1016L666W	1016L667W	1016L668W							
	T(IE1-IE2) ~>	1016L556W	1016L557W	1016L558W	1016L559W	1016L560W	1016L561W	1016L562W	1016L563W	1016L564W	1016L565W
T(IE1-IE3) ~>		1016L556W	1016LB30W	1016LB31W	1016LB32W	1016L560W	1016L561W	1016L562W	1016L563W	1016L564W	1016L565W
		1016LH56W	1016LH57W	1016LH58W	1016LH59W	1016LH60W	1016LH61W	1016LH62W	1016LH63W	1016LH64W	1016LH65W
M->		10SV11NB075	10SV13NB1106								
T(IE2) ~>		1016L566W	1016L568W								
T(IE3) ~>		1016LH66W	1016LH68W								

Single Unit and Kit

10	Sleeve A316	156503202	156503202	156503212	156503222	156503242	156503252	156503262	156503282	156503292	156503302
		156503322	156503342								
11	Shaft A316	165053022B	165053022B	165051092B	165053042B	165053062B	165051132B	165053082B	165053102B	165051172B	165053122B
		165053142B	165053162B								
31	Tie rods SVN Kit D14	L=301	L=301	KL22AWP	L=365	L=397	KL22AWT	L=461	L=493	KL22AWX	L=557
		L=589	L=653								

Motor, Coupling, Motor Adaptor

Motor power kW >	0,75	1,5	2,2	3,0	4,0	4,0	5,5	5,5	7,5	7,5
	7,5	11,0	11,0							

**1	kW >	0,75	1,5	2,2	3,0	4,0	5,5	7,5	11,0
	Motor 2P, 1 ~>	107231100	107231140	50004FD00					
	Motor 2P, 3- IE2 since 0,75kW	107230153	50000PD00	50001PD00	50002PF00	50008PG00	50013PE00	50017PB00	50019PE00
		107230153	107240010	107240510	107241010	50008PG00	50013PE00	50017PB00	50019PE00
	Motor 2P, 3- IE3 since 0,75kW	107234001	107234021	50A01PD00	50A02PF00	50A08PL00	50A13PE00	50A17PB00	50A19PE00
2	Adaptor	161471060	161471070	161471070	161471080	161471080	161471080	161470860	161470880
23	Lifting bracket	-	-	-	-	-	161441050	161441050	161441060
26	Coupling	KL10ABD	KL10ABE	KL10ABE	KL10ABF	KL10ABK	KL10ABL	KL10ABZ	KL10AB0
27	Coupling guard	KL33AAN	KL33AAP	KL33AAP	KL33AAQ	KL33AAQ	KL33AAQ	KL33AAU	KL33AAU
39	Air Vent MOT B14	KL38AAB	KL38AAB	KL38AAB	KL38AAB	KL38AAB	KL38AAC	KL38AAD	KL38AAD

Wear Parts Kit

	->10SV09	->10SV16
up to model (->)	1 bearing	2 bearing
*34 Wear parts	KL35AE7	KL35AE8

Mechanical seal Kit : Mech seal D16 + OR

*20A	Materials->	Q1AEGG	KL01AE1	Std -> Seal Q1AEGG - sleeve OR EPDM HT / Balanced : 10-15-22SV < / = 4 kW
		Q1AVGG	KL01AE2	
		Q1Q1VGG	KL01AE3	
*20	Materials->	Q1AEGG	KL01AE5	Std -> Seal Q1AEGG - upper holder OR EPDM HT / Balanced : 10-15-22SV = / > 5,5 kW
		Q1AVGG	KL01AE6	
		Q1Q1VGG	KL01AD4	

Common, Single Unit and Kit

4	Plugs	EPDM HT	KL34AAX	
5	Upper holder		-	Up to 4,0 kW included
			160103722	Equal / Over 5,5 kW
			160103742	Part with hole for tap
*9	Impeller10 SV A304		150703632	
13	Seal housing disc		150102942	Up to 4,0 kW included
			150102962	Equal / Over 5,5 kW
14	Pump body		161303372	-> 10SVN PN25-40
15	Diffuser carbon bush		152803132	
17	First stage box		152802932	
*21	OR	EPDM HT	KL02ACA	
24	Motor flange		-	
30	Bush seal kit EPDM HT		KL41AA6	
	Bush seal kit FPM		KL41AA7	
36	Final diffuser		152803032	
37	Lower (seal) chamber HT		161441752	
38	Upper (seal) chamber HT		161441712	
40	Kit spacers for shaft		KL07AAB	

* Recommended spare parts - Parti di ricambio consigliate

* Pièces détachées conseillées - Empfohlene Ersatzteile

** Motor spare parts: see motor lists - Parti di ricambio motore: vedi liste motore

** Pièces détachées Moteur : voir listes moteur - Motor-Ersatzteile: gem. Motorlisten

15SV NB 2 Pole 60Hz (15SVNB/D: motors IE3 fitted)

ELP 2P 60	15SV01NB01	15SV02NB03	15SV03NB04	15SV04NB05	15SV05NB07	15SV06NB11	15SV07NB11	15SV08NB15	15SV09NB15	15SV10NB15
N Version	15SV01NB01	15SV02NB03	15SV03NB04	15SV04NB05	15SV05NB07	15SV06NB11	15SV07NB11	15SV08NB15	15SV09NB15	15SV10NB15
M ->	1016L673W									
T(IE1-IE2) ->	1016L575W	1016L576W	1016L577W	1016L578W	1016L579W	1016L580W	1016L581W	1016L582W	1016L583W	1016L584W
	1016LB37W	1016LB38W	1016L577W	1016L578W	1016L579W	1016L580W	1016L581W	1016L582W	1016L583W	1016L584W
T(IE1-IE3) ->	1016LH75W	1016LH76W	1016LH77W	1016LH78W	1016LH79W	1016LH80W	1016LH81W	1016LH82W	1016LH83W	1016LH84W
	15SV11NB1856									
M->										
T(IE2) ->	1016L585W									
T(IE3) ->	1016LH85W									

Single Unit and Kit

10	Sleeve A316	156503212	156503212	156503232	156503252	156503272	156503292	156503312	156503332	156503352	156503372
		156503392									
11	Shaft A316	165051092B	165051092B	165051112B	165051132B	165051152B	165051172B	165051192B	165051212B	165051232B	165051252B
		165051272B									
31	Tie rods SVN	KL22AWP	KL22AWR	KL22AWT	KL22AWV	KL22AWX	KL22AWY	KL22AWZ	KL22AW1	KL22AW3	
		KL22AW5									

Motor, Coupling, Motor Adaptor

Motor power kW >	1,5	3,0	4,0	5,5	7,5	11,0	11,0	15,0	15,0	15,0
	18,5									

**1	kW >	1,5	3,0	4,0	5,5	7,5	11,0	15,0	18,5
	Motor 2P, 1 ~>	107231140							
	Motor 2P, 3- IE2 since 0,75kW	50000PD00	50002PF00	50008PG00	50013PE00	50017PB00	50019PE00	50024PB00	50025PB00
		107240010	107241010	50008PG00	50013PE00	50017PB00	50019PE00	50024PB00	50025PB00
	Motor 2P, 3- IE3 since 0,75kW	107234021	50A02PF00	50A08PL00	50A13PE00	50A17PB00	50A19PE00	50A24PB00	50A25PB00
2	Adaptor	161471070	161471080	161471080	161471080	161470860	161470880	161470880	161470880
23	Lifting bracket	-	-	-	161441050	161441050	161441060	161441060	161441060
26	Coupling	KL10ABE	KL10ABF	KL10ABK	KL10ABL	KL10ABZ	KL10AB0	KL10AB0	KL10AB0
27	Coupling guard	KL33AAP	KL33AAQ	KL33AAQ	KL33AAQ	KL33AAU	KL33AAU	KL33AAU	KL33AAU
39	Air Vent MOT B14	KL38AAB	KL38AAB	KL38AAB	KL38AAC	KL38AAD	KL38AAD	KL38AAD	KL38AAD

Wear Parts Kit

	->15SV06	->15SV11
up to model (->)	1 bearing	2 bearing
*34 Wear parts	KL35AFA	KL35AFB

Mechanical seal Kit : Mech seal D16 + OR

*20A	Materials->	Q1AEGG	KL01AE1	Std -> Seal Q1AEGG - sleeve OR EPDM HT / Balanced : 10-15-22SV < / = 4 kW
		Q1AVGG	KL01AE2	
		Q1Q1VGG	KL01AE3	
*20	Materials->	Q1AEGG	KL01AE5	Std -> Seal Q1AEGG - upper holder OR EPDM HT / Balanced : 10-15-22SV = / > 5,5 kW
		Q1AVGG	KL01AE6	
		Q1Q1VGG	KL01AD4	

Common, Single Unit and Kit

4	Plugs	EPDM HT	KL34AAX	
5	Upper holder		-	Up to 4,0 kW included
			160103722	Over 5,5 kW
			160103742	Part with hole for tap
*9	Impeller 15SV A316		150703642	
13	Seal housing disc		150102942	Up to 4,0 kW included
			150102962	Over 5,5 kW
14	Pump body		161303382	-> 15-22SVN PN25-40
15	Diffuser		152803152	
17	First stage box		152802952	
*21	OR	EPDM HT	KL02ACA	
24	Motor flange		-	
30	Bush seal kit EPDM HT		KL41AA6	
	Bush seal kit FPM		KL41AA7	
36	Final diffuser		152803052	
37	Lower (seal) chamber HT		161441752	
38	Upper (seal) chamber HT		161441712	
40	Kit spacers for shaft		KL07AAB	

* Recommended spare parts - Parti di ricambio consigliate

* Pièces détachées conseillées - Empfohlene Ersatzteile

** Motor spare parts: see motor lists - Parti di ricambio motore: vedi liste motore

** Pièces détachées Moteur : voir listes moteur - Motor-Ersatzteile: gem. Motorlisten

22SVNB 2 Pole 60Hz

ELP 2P 60											
N Version	22SV01NB022	22SV02NB040	22SV03NB055	22SV04NB075	22SV05NB110	22SV06NB110	22SV07NB150	22SV08NB150	22SV09NB185	22SV10NB185	
M->	1016L678W										
T(IE2) ~>	1016L591W	1016L592W	1016L593W	1016L594W	1016L595W	1016L596W	1016L597W	1016L598W	1016L599W	1016L600W	
	1016LB43W	1016L592W	1016L593W	1016L594W	1016L595W	1016L596W	1016L597W	1016L598W	1016L599W	1016L600W	
T(IE3) ~>	1016LH91W	1016LH92W	1016LH93W	1016LH94W	1016LH95W	1016LH96W	1016LH97W	1016LH98W	1016LH99W	1016LJ00W	

Single Unit and Kit

10	Sleeve A316	156503212	156503212	156503232	156503252	156503272	156503292	156503312	156503332	156503352	156503372
11	Shaft A316	165051092B	165051092B	165051112B	165051132B	165051152B	165051172B	165051192B	165051212B	165051232B	165051252B
31	Tie rods SVN H	KL22AWP	KL22AWP	KL22AWR	KL22AWT	KL22AWV	KL22AWX	KL22AWY	KL22AWZ	KL22AW1	KL22AW3

Motor, Coupling, Motor Adaptor

Motor power kW >	2,2	4,0	5,5	7,5	11,0	11,0	15,0	18,5	18,5	18,5
------------------	-----	-----	-----	-----	------	------	------	------	------	------

**1	kW >	2,2	4,0	5,5	7,5	11,0	15,0	18,5			
	Motor 2P, 1 ~>	50004FD00									
	Motor 2P, 3~ IE2 since 0,75kW	50001PD00	50008PG00	50013PE00	50017PB00	50019PE00	50024PB00	50025PB00			
		107240510	50008PG00	50013PE00	50017PB00	50019PE00	50024PB00	50025PB00			
	Motor 2P, 3~ IE3 since 0,75kW	50A01PD00	50A08PL00	50A13PE00	50A17PB00	50A19PE00	50A24PB00	50A25PB00			
2	Adaptor	161471070	161471080	161471080	161470860	161470880	161470880	161470880			
23	Lifting bracket	-	-	161441050	161441050	161441060	161441060	161441060			
26	Coupling	KL10ABE	KL10ABK	KL10ABL	KL10ABZ	KL10AB0	KL10AB0	KL10AB0			
27	Coupling guard	KL33AAP	KL33AAQ	KL33AAQ	KL33AAU	KL33AAU	KL33AAU	KL33AAU			
39	Air Vent MOT B14	KL38AAB	KL38AAB	KL38AAC	KL38AAD	KL38AAD	KL38AAD	KL38AAD			

Wear Parts Kit

	->22SV06	->22SV11
up to model (->)	1 bearing	2 bearing
*34 Wear parts	KL35AFA	KL35AFB

Mechanical seal Kit : Mech seal D16 + OR

*20A	Materials->	Q1AEGG	KL01AE1	Std -> Seal Q1AEGG - sleeve OR EPDM HT / Balanced : 10-15-22SV < / = 4 kW
		Q1AVGG	KL01AE2	
		Q1Q1VGG	KL01AE3	
*20	Materials->	Q1AEGG	KL01AE5	Std -> Seal Q1AEGG - upper holder OR EPDM HT / Balanced : 10-15-22SV = / > 5,5 kW
		Q1AVGG	KL01AE6	
		Q1Q1VGG	KL01AD4	

Common, Single Unit and Kit

4	Plugs	EPDM HT	KL34AAX	
5	Upper holder		-	Up to 4,0 kW included
			160103722	Equal / Over 5,5 kW
			160103742	Part with hole for tap
*9	Impeller 22SV A316		150703652	
13	Seal housing disc		150102942	Up to 4,0 kW included
			150102962	Equal / Over 5,5 kW
14	Pump body		161303382	-> 15-22SVN PN25-40
15	Diffuser		152803152	
17	First stage box		152802952	
*21	OR	EPDM HT	KL02ACA	
24	Motor flange		-	
30	Bush seal kit EPDM HT		KL41AA6	
	Bush seal kit FPM		KL41AA7	
36	Final diffuser		152803052	
37	Lower (seal) chamber HT		161441752	
38	Upper (seal) chamber HT		161441712	
40	Kit spacers for shaft		KL07AAB	

* Recommended spare parts - Parti di ricambio consigliate

* Pièces détachées conseillées - Empfohlene Ersatzteile

** Motor spare parts: see motor lists - Parti di ricambio motore: vedi liste motore

** Pièces détachées Moteur : voir listes moteur - Motor-Ersatzteile: gem. Motorlisten