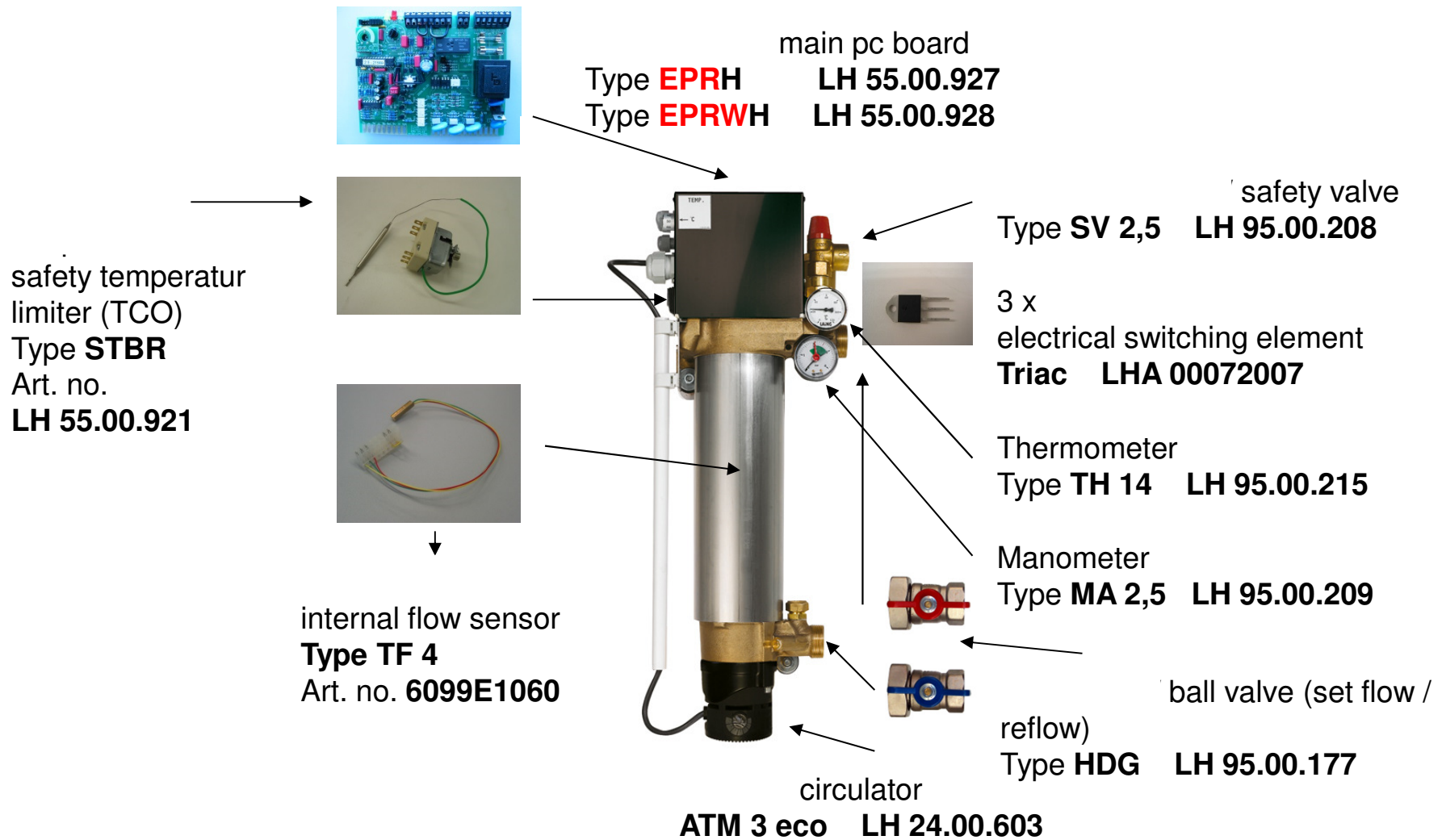
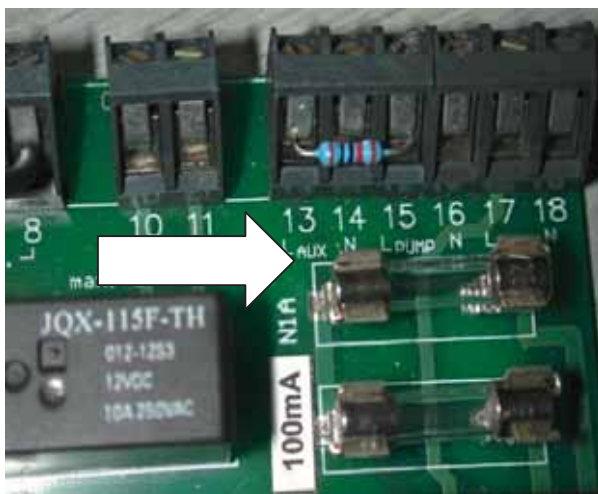
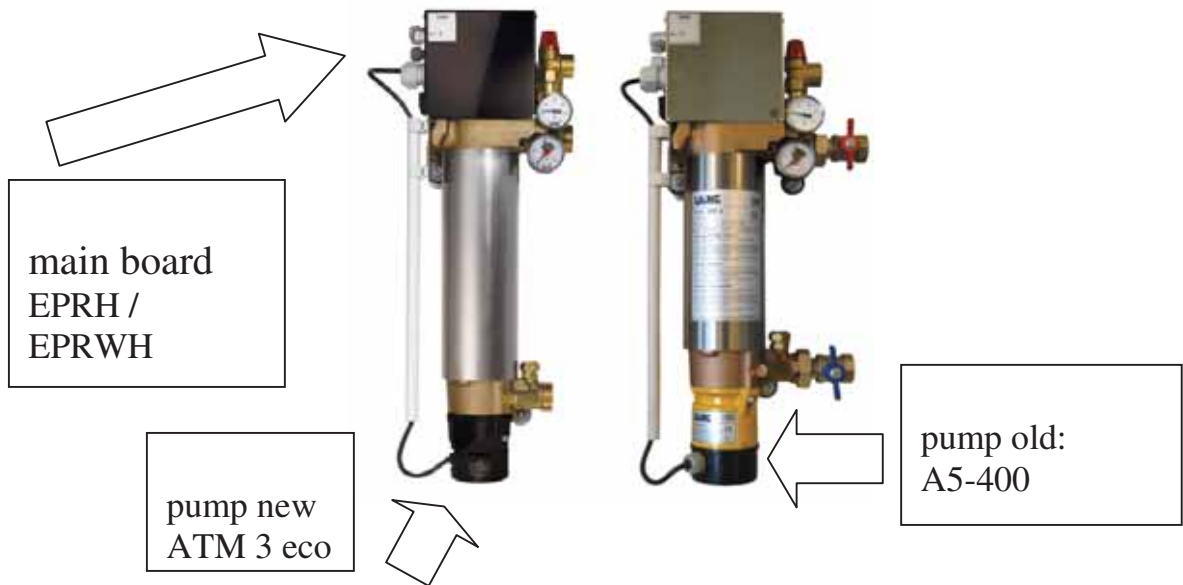


spare parts hydronic electric heating



Important to pump replacement on an electric heater-circulator unit EPR



EPR/LSE: A resistor with 70 – 100 k Ohm is necessary between terminal 13 and 15. Additional we recommend a fuse with 4 ampere instead of 1 ampere



1 - EPR 6, 9, 12, 15

2 - Pressure Balance Tank

3 - SV 2,5

4 - HDG

5 - Manifold+control-valves

6 - Manifold + flowmeters

7 - Panel w/ front cover

Model	Code	Description // Parts for EPE
ATM3eco	LH2400603	High efficiency standard exchange pump for EPR 6/9/12/15 and EPM and EPE, delivery head 4m, max. 35 Watt
AS-6	LH9500046	Adapter plug for 230 V connection of EPE 6 M
AS-3	LH9500045	Adapter plug for 230 V connection of 3 kW heat register of EPE 13 M
HR 13	LH9500524	Heating element 13 kW (3 + 5 + 5)
HR 6	LH9500520	Heating element 6 kW (2 + 2 + 2) EPEH
DG 6	LH9500205	Diaphragm pressure balance tank (6 l, corrosion resistant primary pressure 0.75 bar)
EPEH	LH5500931	PC-board for EPM / EPE
HDG	LH9500177	Connection set for EPR (2 ball valves 1" inside thread flat sealing connection)
TH 14	LH9500215	Thermometer
MA 2,5	LH9500209	Pressure gauge 2.5 bar, R 3/8", axial connection
STBR	LH5500921	Switch set for EPR-/EPE-/EPE safety temperature limiter
Entkalker	LH9500048	Quick descaler concentrate (1l) i.e. Decalcifier
EPRH	LH5500927	Main PC Board for EPR and EPR Z
-	LHB35331137	TEMPERATURE SENSOR FOR EPE