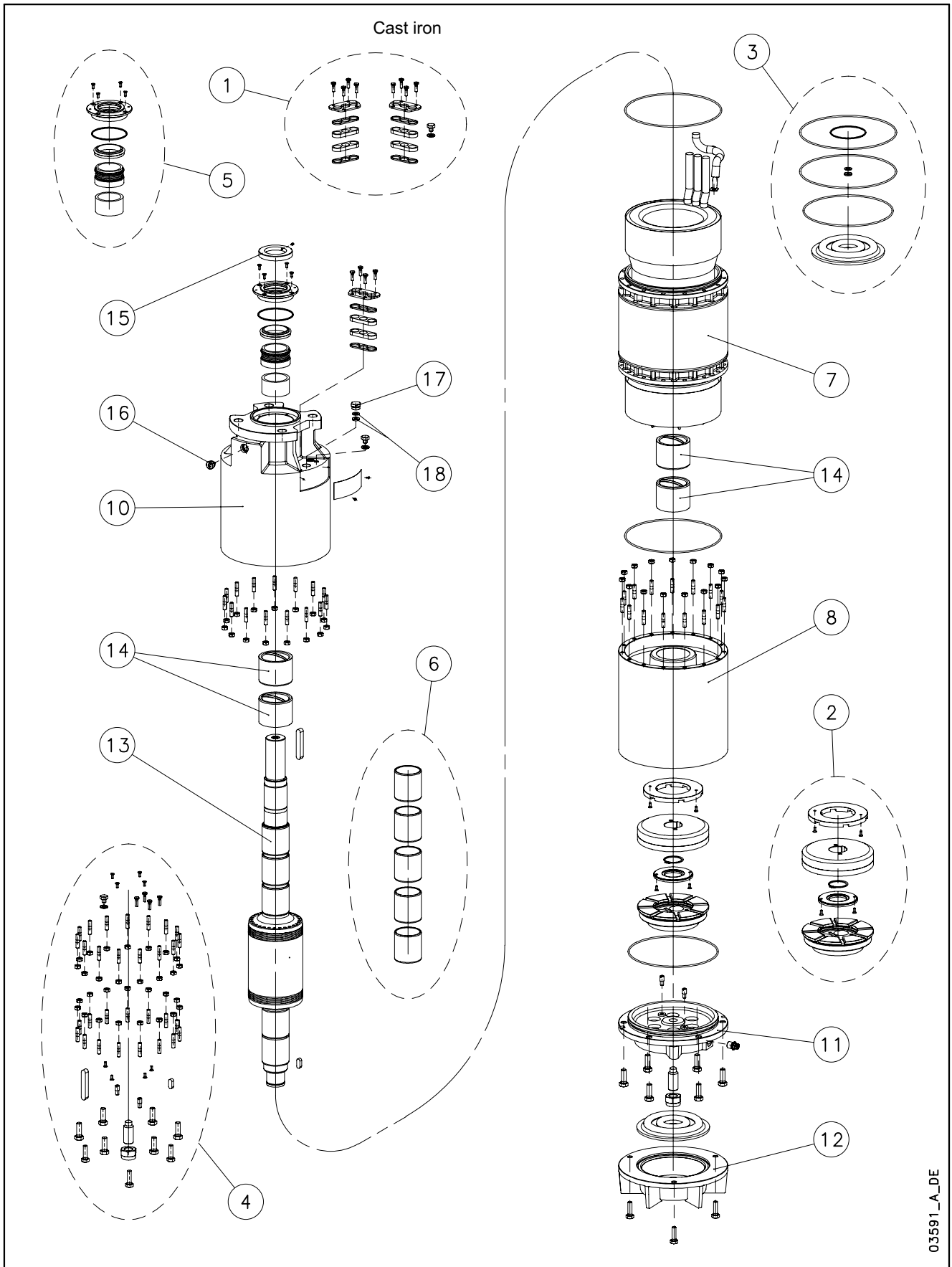


L12W-L12W HT/A - CP12W-CP12W HT/A - CP P12A-CP P12AH



03591_A_DE

N.	Descrizione it	Description en	Description fr	Beschreibung de	Descripción es	Descrição pt
1	Kit pressacavi	Kit cable glands	Kit press étoupes	Kabelverschraubungensatz	Kit sujetascable	Kit pressacabos
2	Kit reggispinta completo	Thrust bearing kit, complete	Kit palier de butée complet	Drucklagerbausatz komplet	Kit cojinete de empuje completo	Kit Apoios, completo
3	Kit guarnizioni	Seals kit	Kit Garnitures	Bausatz Dichtungen	Kit juntas	Kit guarnições
4	Kit Viterie	Screws kit	Kit Visserie	Bausatz Schrauben	Kit tornillos	Kit parafusos
5	Kit tenuta/Flangia	Kit seals / Flange	Kit garnitures / Bride	Bausatz dichtungen / Flansch	Kit juntas / Brida	Kit Emanque/Flange
6	Kit boccole	Kit bearing bush	Kit roulement à douille	Bausatz buchsenlager	Kit cojinete de casquillo	Kit rolamento em bucha
7	Statore completo	Stator assy	Stator complet	Stator komplet	Estator completo	Estator complet
8	Supporto inferiore	Lower support	Support inférieur	Untere Lagerung	Soporte inferior	Suporte inferior
10	Supporto superiore	Upper bracket	Support supérieur	Obere Lagerung	Soporte superior	Suporte superior
11	Supporto kit reggispinta	Thrust bearing bracket kit	Support kit palier de butée	Drucklagergehäuse	Soporte kit cojinete de empuje	Suporte Kit Apoios
12	Fondello diaframma	Bottom cover diaphragm	Couvercle inférieur soufflet	Untere Abdeckung Blasebalg	Tapa inferior de sujeta	Tampa inferior do fole
13	Albero rotore	Rotor shaft	Arbre rotor	Rotorwelle	Árbol rotor	Veio rotor
14	Boccola cuscinetto sup. / inf.	Upper / lower bush bearing	Roulement à douille supérieur / inférieur	Obere /Untere- buchsenlager	Cojinete de casquillo superior-inferior	Rolamento em bucha superior-inferior
15	Parasabbia	Sand guard	Anti-sable	Sandschutz	Protección de arena	Protecção Vedante
16	Valvola sfiato	Relief valve	Soupape de Purge	Ablassventil	Valvula de purga	Válvula
17	Tappo riempimento	Filling plug	Bouchon de remplissage	Füllstoff-Stecker	Tapón de llenado	Bujão
18	Guarnizione pressacavo	Cable gland gasket	Joint de press étoupe	Kabelverschraubungen Dichtung	Junta sujetacable	O-ring pressacabo
N.	Beschrijving nl	Περιγραφή el	Açıklama tr	Kuvaus fi	Описание ru	Opis pl
1	Kabelklem set	Σετ σφικτήρων καλωδίων	Kablo bez kiti	Kaapelinpuristinsarja	Комплект каб.уплотнителей	Zestaw mocowania kabla
2	Complete druklager set	Πλήρες σετ ωπτικού ρουλεμάν	Komple ayar pulu kiti	Täydellinen painelaakerisarja	Полный комплект упорного подшипника	Kompletny zestaw łożyska ciernego
3	Kit met dichtingen	Σετ τσιμουχών	Conta kiti	Tiivistesarja	КОМПЛЕКТ прокладок	ZESTAW Uszczelek
4	Kit met schroeven	Σετ βιδών	Vida kiti	Ruuvisarja	КОМПЛЕКТ винтов	ZESTAW wkręty
5	Mechanische afdichting/Flens	Σετ ανοχών στεγανότητας/Φλάντζας	Mekanik conta / Flanş	Tiivistesarja / Laippa	Комплект прокладок/фланца	Zestaw uszczelniaczy kołnieszka
6	Bus set	επάνω Σετ	Burç yatađı kiti	Holkilaakerisarja	КОМПЛЕКТ Подшипник со втулкой	Zestaw łożysko tulejowe
7	Stator compleet	Πλήρης στάτορας	Statör tamamı	Täydellinen staattori	Статор полный	Stator
8	Onderste steun	Κάτω φορέας	Alt segman braket	Alatuki	Нижняя опора	Dolny wspornik
10	Bovenste steun	Επάνω φορέας	Ust braket	Ylätuki	Верхняя опора	Górny wspornik
11	Steun druklager kit	Φορέας σετ ωπτικού ρουλεμάν	Bindirme yatađı kiti desteđi	Painelaakerisarjan tuki	Опора комплекта упорного подшипника	Wspornik zestawu łożyska wzdużnego
12	Bedekking onderkant de membraan	Κάλυμμα διαφράγματος	Zeminlemek kapađı Diyafram	Alaosan, kalvo	диафрагма основания крышка	Dolna pokrywa Ko nierz
13	Rotoras	Άξονας στροφείου	Rotor mili	Roottorin akseli	ось ротора	Wałek (z rotorem)
14	Bovenste /Onderste- Bus	Κορυφή / Κάτω ένοσφαιρου ρουλεμάν	Burç yatađı üstteki / alt	Holkilaakeri ylempi - alempi	Подшипник со втулкой верхне / низко	łożysko tulejowe wyższy / obniżać
15	Beschermkap	Προστατευτικό άμμου	Kum sızıntısı önleme	Hiekka suoja	Защита от песка	Ochrona przeciw-piaskowa
16	Ontluchtingsventiel	Βαλβίδα εξαερισμού	Tahliye valfi	Paineenrajoiitusventtiili	Редукционный клапан	Zawór odpowietrzający
17	Vulplug	Πώμα πλήρωσης	Şarj fişı	Täyttötulppa	Пробка заполнения	Korek zalewowy
18	Kabelklem pakking	Περιβλήμα σφικτήρα καλωδίων	Kablo bez contası	Kaapelinpuristimen tiiviste	Прокладка уплотнителей кабеля	Uszczelniacz kabla

L12WR/A 12" Submersible Motors

L12WR 3Ph 400V 50Hz DOL	code	1850T405/A 507059210	2200T405/A 507059220	2600T405/A 507059230	3000T405/A 507059240
L12WR 3Ph 400/690V 50Hz SD	code	1850T405/A 507059215	2200T405/A 507059225	2600T405/A 507059235	3000T405/A 507059245
	kW	185	220	260	300

1	Kit cable glands A904 EPDM 1X50/7C	5KL30AB7			
	Kit cable glands A904 EPDM 1X95/12C	5KL30AB8			Models DOL 220-260 kW
*2	Kit thrust bearing	5KL41AAH			All models
*3	Kit seals NBR	5KL02AAA			All models
4	Kit screws A904	5KL40AAQ			All models
*5	Kit seals / Cover CER/CARB/NBR D.58	5KL01AAX			All models with MECH Cover A904
6	Kit bush bearing chromate	5KL35AAH			All models For REPAIR only
8	Lower support DUPLEX	561400670			All models
10	Upper bracket DOL	561400970			All models DOL less 260 kW
	Upper bracket DOL	561401060			Model DOL 260 kW
	Upper bracket SD	561401000			All models
11	Thrust bearing bracket	561400700			All models
	Filling valve DUPLEX	549300090			All models
12	Bottom cover	564200220			All models
*14	Upper/lower bush bearing	562590050			All models, N. 4
15	Sand guard DUPLEX	568600120			All models
16	Release valve DUPLEX NBR	549300080			All models
17	Plug DUPLEX	540500030			All models
18	Cable gland EPDM (plug item 17)	568560290			All models
	Washer (plug item 17)	572635010			All models

7	Stator assy DOL	code	540641450	540641460	540641470	540641480
	Stator assy SD		540641455	540641465	540641475	540641485
13	Rotor shaft 420SS	code	555080820	555080830	555080840	555080850

Stator 540641460-540641470-540641480 are no more feasible due to modified winding wire feature

PVC Winding Wire					
400-3-50 DOL					
Wire Code	573325819	573325817	573325818	573325818	573325818
Wire Type	D2,3/3,3	D2,1/3,1	D2,2/3,2	D2,3/3,3	D2,3/3,3
Tot wire need [m]	1300	1655	1410	1700	1700
400/690-3-50 SD					
Wire Code	573325819	573325817	573325819	573325819	573325819
Wire Type	D2,3/3,3	D2,1/3,1	D2,3/3,3	D2,3/3,3	D2,3/3,3
Tot wire need [m]	1300	1655	1580	1875	1875

In case of order, the quantity delivered will depend from the coil currently available.

Flat Power cable H07BB-F ACS approved					
400-3-50 DOL					
Cable code - 1m	572851276	572851276	572851278	572851274	572851274
Section (mm2)	1X95	1X95	1X120	2X70	2X70
Cable code , ground - 5,5 m	556990080	556990080	556990090	556990070	556990070
Section (mm2)	1X95	1X95	1X120	1X70	1X70
400/690-3-50 SD					
Cable code - 1m	572851272	572851272	572851274	572851276	572851276
Section (mm2)	1X50	1X50	1X70	1X95	1X95
Cable code , ground - 5,5m	556990060	556990060	556990070	556990080	556990080
Section (mm2)	1X50	1X50	1X70	1X95	1X95

Special Versions			
*3	Kit seals FPM	TBD	All models
*5	Kit seals / Cover SIC/SIC/NBR D.58	5KL01AAZ	All models
	Kit seals / Cover WID/WID/NBR D.58	5KL01AAY	All models
16	Release valve FPM	549300071	All models
17	Plug 316 SS for PT100	540500020	All models
18	Cable gland gasket EPDM	568560290	All models, n. 2 for PT100
	Cable gland gasket FPM	568560291	All models, n. 2 for PT100
	Kit PT100 EPDM	5KL30AAX	All models

* Recommended spare parts - Parti di ricambio consigliate
 * Pièces détachées conseillées - Empfohlene Ersatzteile

xylem

