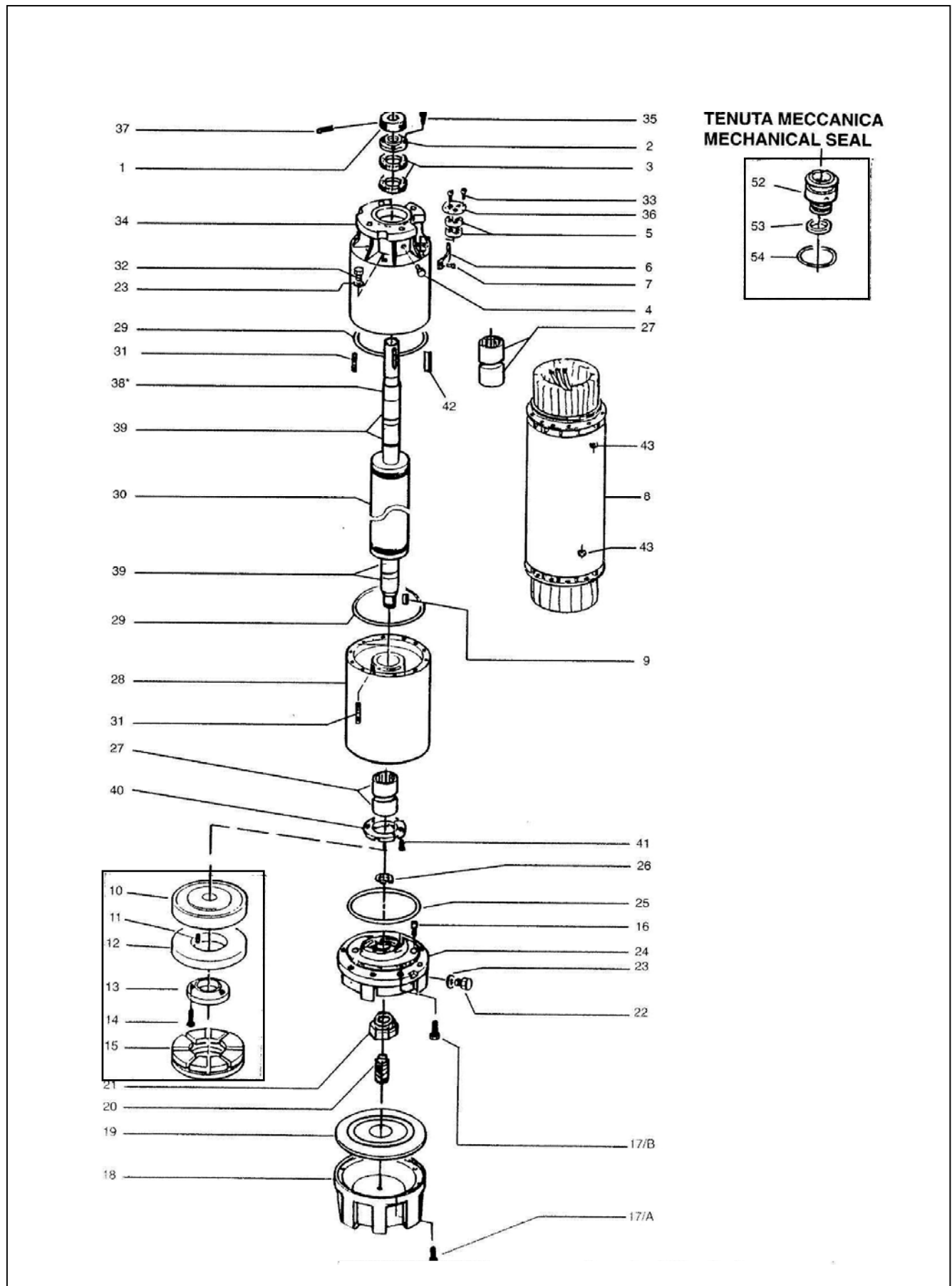


L12W - CP12W



L12WR 12" Submersible Motors

3~ 380-415 50				3~ 400/690 50			
DOL				SD			
1850T405	2200T405	2600T405	3000T405	1850T405	2200T405	2600T405	3000T405
507009210	507009220	507009230	507009240	507009215	507009225	507009235	507009245
185 kW	220 kW	260 kW	300 kW	185 kW	220 kW	260 kW	300 kW

Components

1	Sand guard	568600120	All models						
2	Mech seal cover	564000270	All models cover Duplex						
* 3	Lip seal	-							
8	Stator assy w/cable	540641450	540641460	540641470	540641480	540641455	540641465	540641475	540641485
	Wire Code	573325819	573325817	573325818	573325818	573325819	573325817	573325818	573325818
	PVC Wire Type	D2,3/3,3	D2,1/3,1	D2,2/3,2	D2,2/3,2	D2,3/3,3	D2,1/3,1	D2,2/3,2	D2,2/3,2
	Tot wire need [m]	1450	1650	1400	1700	1450	1650	1400	1700
9	Key	572650339	All models						
16	Dragging dowel	562200020	All models, 2 pcs						
18	Bottom cover	564200220	All models						
*19	Bellow	562360050	All models						
20	Adjusting screw	567200300	All models						
21	Locking nut	572633218	All models						
22	Filling valve Duplex	549300090	All models						
24	Thrust bearing bracket	561400700	All models						
26	Stop ring	572651133	All models						
*27	Bearing bush	562590050	All models, 4 pcs						
28	Lower bracket	561400670	All models						
30	Shaft w/rotor	555080820	555080830	555080840	555080850	555080820	555080830	555080840	555080850
32	Release valve	549300100	All models						
34	Upper bracket	561400680	561400680	561400680	561400680	561400690	561400690	561400690	561400690
	Plug Duplex	540500030	All models, if existing						
39	Journal sleeve chroma	562800030	All models, 4 pcs						
40	Up thrust washer	568360040	All models						
42	Key	572650492	All models						

Kit

* ->	4,5 + 33,36	Cable glands A316 / EPDM	5KL30AAV	Cable section 1x50-70 mm2 (plates & screws, seals, ground screw)
* ->	4,5 + 33,36	Cable glands A316 / EPDM	5KL30AAW	Cable section 1x95-120 mm2 (plates & screws, seals, ground screw)
* ->	9,10, 12-15, 26	Thrust bearing	5KL41AAH	All models
* ->	23, 25, 29	ORings NBR - Bellow EPDM	5KL02AAA	All models
->	9,17,33-37,41-43	Screws A316	5KL40AAQ	All models
->	38	Repair set	5KL35AAB	FOR REPAIRS ONLY (Journal sleeve chromate, shaft seal ring)

Power cable		ACS approved		Total qty required		
Section mm2	code / m	suitable for:	DOL	SD	incl. ground cable	
1x50	572851272			185 - 220 KW	25 m	40 m
1x70	572851274		185 KW	260 - 300 KW		
1x95	572851276		220 KW			
1X120	572851278		260 KW			
2x70	572851274		300 KW			

Mechanical seal, items 52- 54

Ceramic/Carbon/NBR	5KL01AAX
Fluoropolymer/NBR	5KL01AAY
Stainless Steel/NBR	5KL01AAZ

Ground cable

ACS approved		length standard: 5,5 m		
Section mm2	code	suitable for:	DOL	SD
1x50	556990060			185 - 220 KW
1x70	556990070		185 KW	260 - 300 KW
1x95	556990080		220 KW	
1X120	556990090		260 KW	
2x70	556990070		300 KW	

* Recommended spares

L12WR_5_Jan00_EdA