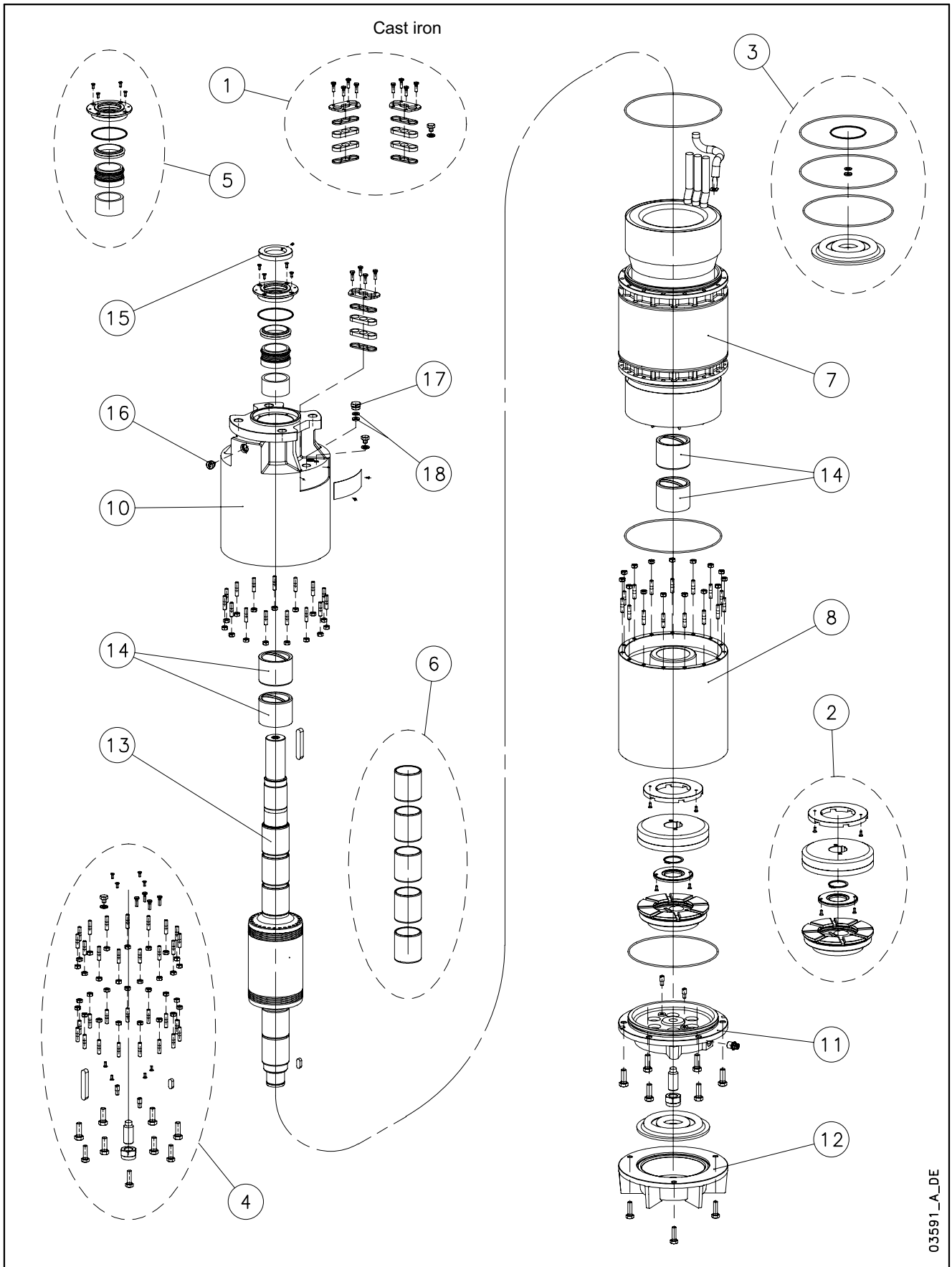


L12W-L12W HT/A - CP12W-CP12W HT/A - CP P12A-CP P12AH



N.	Descrizione it	Description en	Description fr	Beschreibung de	Descripción es	Descrição pt
1	Kit pressacavi	Kit cable glands	Kit press étoupes	Kabelverschraubungensatz	Kit sujetascable	Kit pressacabos
2	Kit reggispinta completo	Thrust bearing kit, complete	Kit palier de butée complet	Drucklagerbausatz komplet	Kit cojinete de empuje completo	Kit Apoios, completo
3	Kit guarnizioni	Seals kit	Kit Garnitures	Bausatz Dichtungen	Kit juntas	Kit guarnições
4	Kit Viterie	Screws kit	Kit Visserie	Bausatz Schrauben	Kit tornillos	Kit parafusos
5	Kit tenuta/Flangia	Kit seals / Flange	Kit garnitures / Bride	Bausatz dichtungen / Flansch	Kit juntas / Brida	Kit Emanque/Flange
6	Kit boccole	Kit bearing bush	Kit roulement à douille	Bausatz buchsenlager	Kit cojinete de casquillo	Kit rolamento em bucha
7	Statore completo	Stator assy	Stator complet	Stator komplet	Estator completo	Estator complet
8	Supporto inferiore	Lower support	Support inférieur	Untere Lagerung	Soporte inferior	Suporte inferior
10	Supporto superiore	Upper bracket	Support supérieur	Obere Lagerung	Soporte superior	Suporte superior
11	Supporto kit reggispinta	Thrust bearing bracket kit	Support kit palier de butée	Drucklagergehäuse	Soporte kit cojinete de empuje	Suporte Kit Apoios
12	Fondello diaframma	Bottom cover diaphragm	Couvercle inférieur soufflet	Untere Abdeckung Blasebalg	Tapa inferior de sujeta	Tampa inferior do fole
13	Albero rotore	Rotor shaft	Arbre rotor	Rotorwelle	Árbol rotor	Veio rotor
14	Boccola cuscinetto sup. / inf.	Upper / lower bush bearing	Roulement à douille supérieur / inférieur	Obere /Untere- buchsenlager	Cojinete de casquillo superior-inferior	Rolamento em bucha superior-inferior
15	Parasabbia	Sand guard	Anti-sable	Sandschutz	Protección de arena	Protecção Vedante
16	Valvola sfiato	Relief valve	Soupape de Purge	Ablassventil	Valvula de purga	Válvula
17	Tappo riempimento	Filling plug	Bouchon de remplissage	Füllstoff-Stecker	Tapón de llenado	Bujão
18	Guarnizione pressacavo	Cable gland gasket	Joint de press étoupe	Kabelverschraubungen Dichtung	Junta sujetacable	O-ring pressacabo
N.	Beschrijving nl	Περιγραφή el	Açıklama tr	Kuvas fi	Описание ru	Opis pl
1	Kabelklem set	Σετ σφικτήρων καλωδίων	Kablo bez kiti	Kaapelinpuristinsarja	Комплект каб.уплотнителей	Zestaw mocowania kabla
2	Complete druklager set	Πλήρες σετ ωπτικού ρουλεμάν	Komple ayar pulu kiti	Täydellinen painelaakerisarja	Полный комплект упорного подшипника	Kompletny zestaw łożyska ciernego
3	Kit met dichtingen	Σετ τσιμουχών	Conta kiti	Tiivistesarja	КОМПЛЕКТ прокладок	ZESTAW Uszczelek
4	Kit met schroeven	Σετ βιδών	Vida kiti	Ruuvisarja	КОМПЛЕКТ винтов	ZESTAW wkręty
5	Mechanische afdichting/Flens	Σετ ανοχών στεγανότητας/Φλάντζας	Mekanik conta / Flanş	Tiivistesarja / Laippa	Комплект прокладок/фланца	Zestaw uszczelniaczy kołnieszka
6	Bus set	επάνω Σετ	Burç yatađı kiti	Holkilaakerisarja	КОМПЛЕКТ Подшипник со втулкой	Zestaw łożysko tulejowe
7	Stator compleet	Πλήρης στάτορας	Statör tamamı	Täydellinen staattori	Статор полный	Stator
8	Onderste steun	Κάτω φορέας	Alt segman braket	Alatuki	Нижняя опора	Dolny wspornik
10	Bovenste steun	Επάνω φορέας	Ust braket	Ylätuki	Верхняя опора	Górny wspornik
11	Steun druklager kit	Φορέας σετ ωπτικού ρουλεμάν	Bindirme yatađı kiti desteđi	Painelaakerisarjan tuki	Опора комплекта упорного подшипника	Wspornik zestawu łożyska wzdużnego
12	Bedekking onderkant de membraan	Κάλυμμα διαφράγματος	Zeminlemek kapađı Diyafram	Alaosan, kalvo	диафрагма основания крышка	Dolna pokrywa Ko nierz
13	Rotoras	Άξονας στροφείου	Rotor mili	Roottorin akseli	ось ротора	Wałek (z rotorem)
14	Bovenste /Onderste- Bus	Κορυφή / Κάτω έσφαίρου ρουλεμάν	Burç yatađı üstteki / alt	Holkilaakeri ylempi - alempi	Подшипник со втулкой верхне / низко	łożysko tulejowe wyższy / obniżać
15	Beschermkap	Προστατευτικό άμμου	Kum sızıntısı önleme	Hiekka suoja	Защита от песка	Ochrona przeciw-piaskowa
16	Ontluchtingsventiel	Βαλβίδα εξαερισμού	Tahliye valfi	Paineenrajoiusventtiili	Редукционный клапан	Zawór odpowietrzający
17	Vulplug	Πώμα πλήρωσης	Şarj fişı	Täyttötulppa	Пробка заполнения	Korek zalewowy
18	Kabelklem pakking	Περιβλήμα σφικτήρα καλωδίων	Kablo bez contası	Kaapelinpuristimen tiiviste	Прокладка уплотнителей кабеля	Uszczelniaacz kabla

L12WN 12" Submersible Motors

3~ 380-415 50				3~ 400/690 50			
DOL				SD			
1850T405	2200T405	2600T405	3000T405	1850T405	2200T405	2600T405	3000T405
507008810	507008820	507008830	507008840	507008815	507008825	507008835	507008845
185 kW	220 kW	260 kW	300 kW	185 kW	220 kW	260 kW	300 kW

Components

1	Sand guard	568600090	All models						
2	Mech seal cover	564000140	All models cover A316						
* 3	Lip seal	-							
8	Stator assy w/cable	540640800	540640810	540640820	540640830	540640805	540640815	540640825	540640835
	Wire Code	573325819	573325817	573325818	573325818	573325819	573325817	573325818	573325818
	PVC Wire Type	D2,3/3,3	D2,1/3,1	D2,2/3,2	D2,2/3,2	D2,3/3,3	D2,1/3,1	D2,2/3,2	D2,2/3,2
	Tot wire need [m]	1450	1650	1400	1700	1450	1650	1400	1700
9	Key	572650339	All models						
16	Dragging dowel	562200020	All models, 2 pcs						
18	Bottom cover	564200080	All models						
*19	Bellow	562360050	All models						
20	Adjusting screw	567200300	All models						
21	Locking nut	572633218	All models						
22	Filling valve	549300040	All models						
24	Thrust bearing bracket	561400210	All models						
26	Stop ring	572651133	All models						
*27	Bearing bush	562590050	All models, 4 pcs						
28	Lower bracket	561400180	All models						
30	Shaft w/rotor	555080820	555080830	555080840	555080850	555080820	555080830	555080840	555080850
32	Release valve	549300030	All models						
34	Upper bracket	561400190	561400190	561400190	561400190	561400220	561400220	561400220	561400220
	Plug A316	540500010	All models, if existing						
39	Journal sleeve chroma	562800030	All models, 4 pcs						
40	Up thrust washer	568360040	All models						
42	Key	572650461	All models						

Kit

* ->	4,5 + 33,36	Cable glands A316 / EPDM	5KL30AAV	Cable section 1x50-70 mm2 (plates & screws, seals, ground screw)
* ->	4,5 + 33,36	Cable glands A316 / EPDM	5KL30AAW	Cable section 1x95-120 mm2 (plates & screws, seals, ground screw)
* ->	9,10, 12-15, 26	Thrust bearing	5KL41AAB	All models
* ->	23, 25, 29	ORings NBR - Bellow EPDM	5KL02AAA	All models
->	9, 17, 33-37, 41-43	Screws A316	5KL40AAP	All models
->	38	Repair set	5KL35AAB	FOR REPAIRS ONLY (Journal sleeve chromate, shaft seal ring)

Power cable		ACS approved		Total qty required		
Section mm2	code / m	suitable for:	DOL	SD	incl. ground cable	
1x50	572851272			185 - 220 KW	DOL	SD
1x70	572851274		185 KW	260 - 300 KW		
1x95	572851276		220 KW			
1X120	572851278		260 KW			
2x70	572851274		300 KW			
					25 m	40 m

Mechanical seal, items 52- 54

Ceramic/Carbon/NBR	5KL01AAA
Alum./Alum./NBR - Cover A316	5KL01AAB

Ground cable

ACS approved		lenght standard: 5,5 m		
Section mm2	code	suitable for:	DOL	SD
1x50	556990060			185 - 220 KW
1x70	556990070		185 KW	260 - 300 KW
1x95	556990080		220 KW	
1X120	556990090		260 KW	
2x70	556990070		300 KW	

xylem

