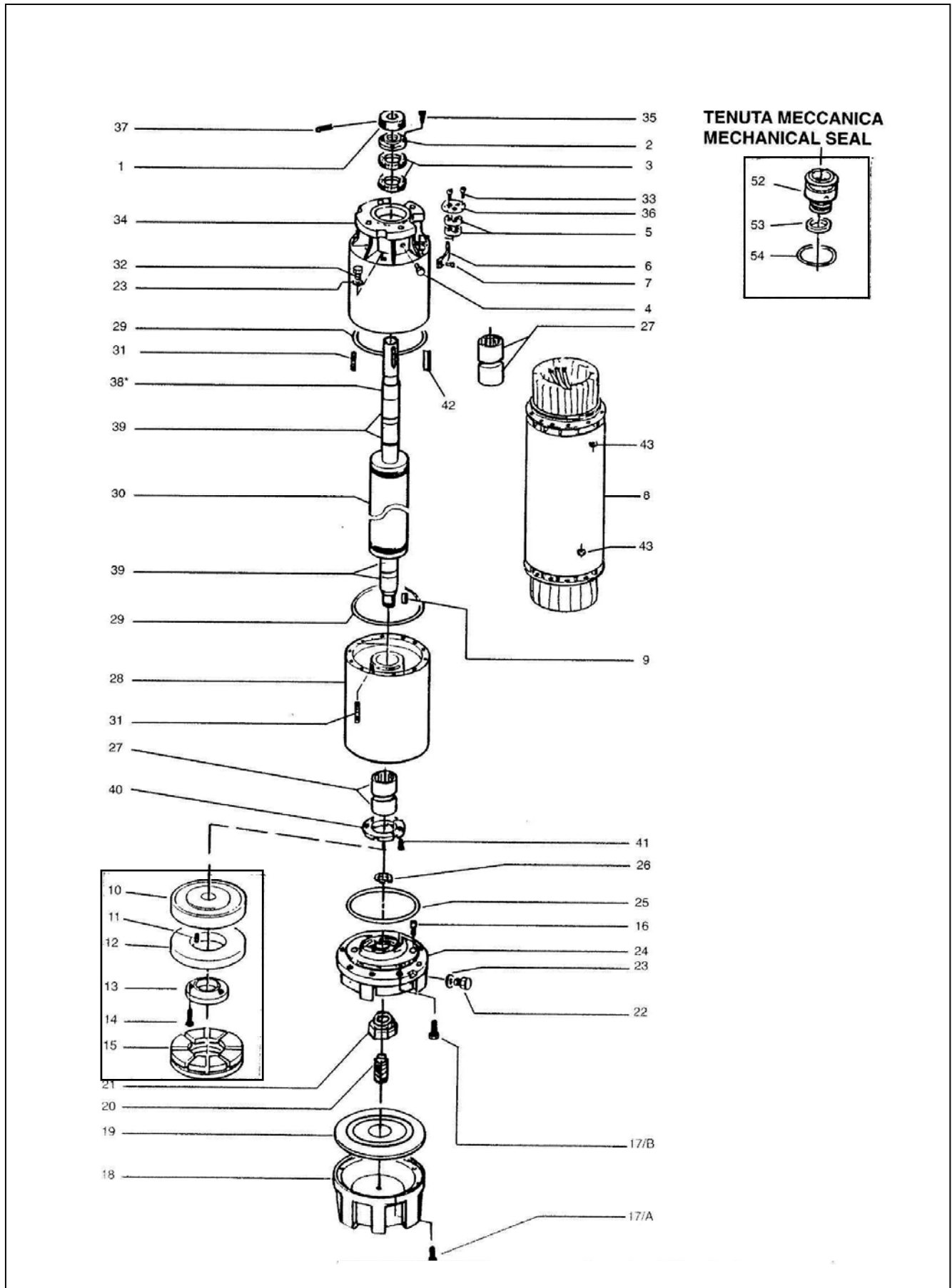


L12W - CP12W



CP12W 12" Submersible Motors

3~ 380-415 50				3~ 400/690 50			
DOL				SD			
1850T405	2200T405	2600T405	3000T405	1850T405	2200T405	2600T405	3000T405
507018010	507018020	507018030	507018040	507018015	507018025	507018035	507018045
185 kW	220 kW	260 kW	300 kW	185 kW	220 kW	260 kW	300 kW

Components

1	Sand guard	568600090	All models						
2	Mech seal cover	564000140	All models						
* 3	Lip seal	-							
8	Stator assy w/cable	540640700	540640710	540640720	540640730	540640705	540640715	540640725	540640735
	Wire Code	573325819	573325817	573325818	573325818	573325819	573325817	573325818	573325818
	PVC Wire Type	D2,3/3,3	D2,1/3,1	D2,2/3,2	D2,2/3,2	D2,3/3,3	D2,1/3,1	D2,2/3,2	D2,2/3,2
	Tot wire need [m]	1450	1650	1400	1700	1450	1650	1400	1700
9	Key	572650339	All models						
16	Dragging dowel	562200020	All models, 2 pcs						
18	Bottom cover	564250040	All models						
*19	Bellow	562360050	All models						
20	Adjusting screw	567200300	All models						
21	Locking nut	572633218	All models						
22	Filling valve	549300020	All models						
24	Thrust bearing bracket	561450160	All models						
26	Stop ring	572651133	All models						
*27	Bearing bush	562590050	All models, 4 pcs						
28	Lower bracket	561450170	All models						
30	Shaft w/rotor	555080820	555080830	555080840	555080850	555080820	555080830	555080840	555080850
32	Release valve	549300010	All models						
34	Upper bracket	561450180	561450180	561450180	561450180	561450190	561450190	561450190	561450190
	Plug A316	540500010	All models, if existing						
39	Journal sleeve chroma	562800030	All models, 4 pcs						
40	Up thrust washer	568360040	All models						
42	Key	572650461	All models						

Kit

* ->	4,5 + 33,36	Cable glands A316 / EPDM	5KL30AAV	Cable section 1x50-70 mm2 (plates & screws, seals, ground screw)
* ->	4,5 + 33,36	Cable glands A316 / EPDM	5KL30AAW	Cable section 1x95-120 mm2 (plates & screws, seals, ground screw)
* ->	9,10, 12-15, 26	Thrust bearing	5KL41AAB	All models
* ->	23, 25, 29	ORings NBR - Bellow EPDM	5KL02AAA	All models
->	9, 17, 33-37,41-43	Screws A304	5KL40AAN	All models
->	38	Repair set	5KL35AAB	FOR REPAIRS ONLY (Journal sleeve chromate, shaft seal ring)

Power cable		ACS approved		Total qty required incl. ground cable	
Section mm2	code / m	suitable for:	DOL	SD	
1x50	572851272			185 - 220 KW	DOL 25 m
1x70	572851274		185 KW	260 - 300 KW	
1x95	572851276		220 KW		
1X120	572851278		260 KW		
2x70	572851274		300 KW		
					SD 40 m

Mechanical seal, items 52- 54

Ceramic/Carbon/NBR	5KL01AAA
Fluor/Alite/NBR	5KL01AAB

Power cable ACS approved lenght standard: 5,5 m

Section mm2	code	suitable for:	DOL	SD
1x50	556990060			185 - 220 KW
1x70	556990070		185 KW	260 - 300 KW
1x95	556990080		220 KW	
1X120	556990090		260 KW	
2x70	556990070		300 KW	

* Recommended spares

CP12W_5_Jan00_EdA