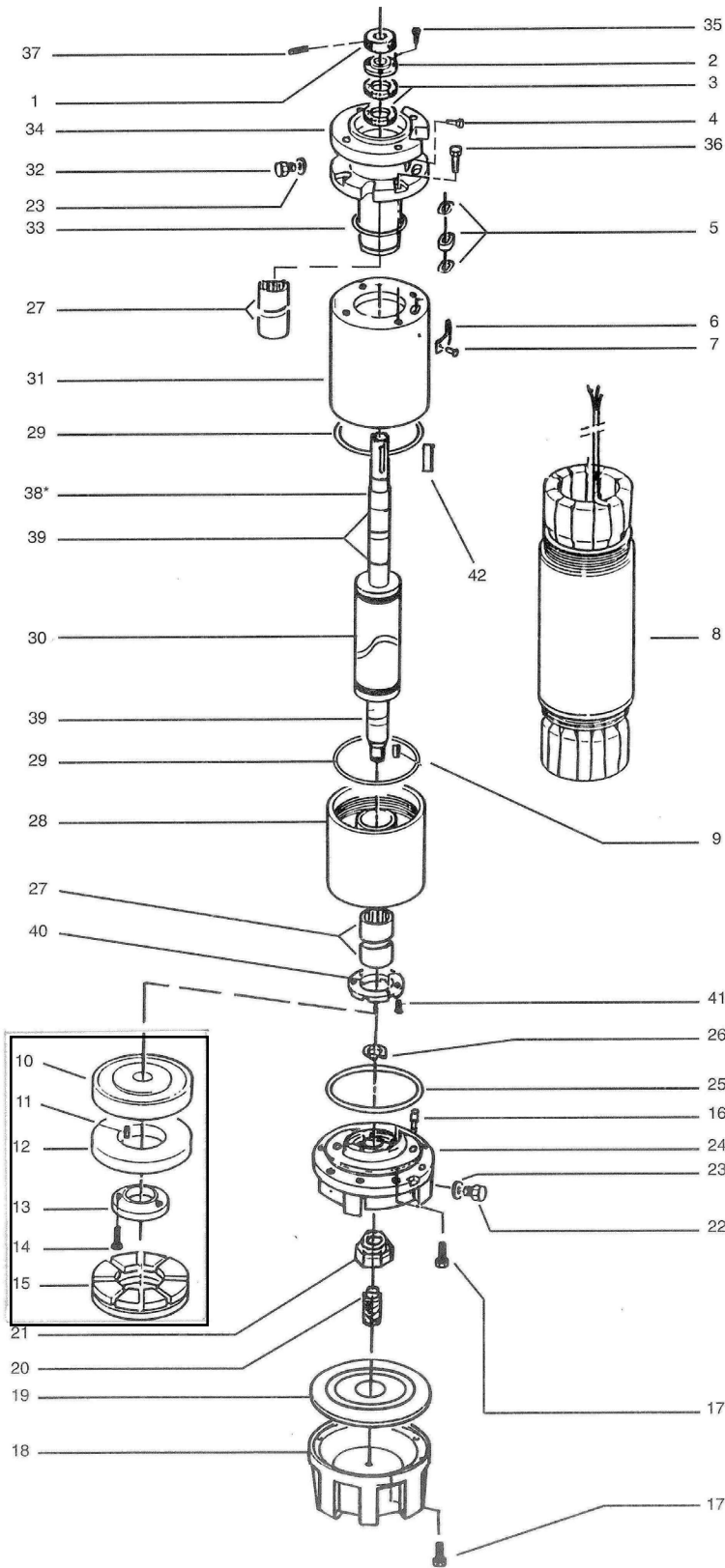
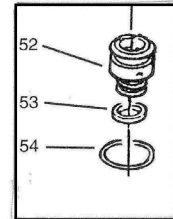


MC 10



TENUTA MECCANICA MECHANICAL SEAL



MC10 10" Submersible Motors,

3~ 400 50 DOL starting			
MC10-125	MC10-150	MC10-175	MC10-200
107070241	107070261	107070281	107070301
507026010	507026020	507026030	507026040
93 kW	110 kW	130 kW	150 kW

Lowara shaft extension**

3~ 400/690 50 SD starting			
MC10-125 SD	MC10-150 SD	MC10-175 SD	MC10-200 SD
107070246	107070266	107070286	107070306
507026015	507026025	507026035	507026045
93 kW	110 kW	130 kW	150 kW

Item Single components

1	Sand guard	568600060	All models						
2	LIP seal cover	564000040	All models						
* 3	LIP seal	572220708	All models, 2 pieces						
8	Stator assy+cable	540640640	540640650	540640660	540640670	540640645	540640655	540640665	540640675
9	Key	572650339	All models						
16	Drive pin	562200020	All models, 2 pieces						
18	Lower cover	564250030	All models						
*19	Diaphragm	562360050	All models						
20	Adjusting screw	567200300	All models						
21	Self-locking nut	572633218	All models						
22	Filling valve	549300020	All models						
24	Thrust bracket	561450130	All models						
26	Snap ring	572651133	All models						
*27	Bearing bush	562590050	All models, 4 pieces						
28	Lower bracket	561450140	All models						
30	Shaft and rotor	555080640	555080650	555080660	555080670	555080640	555080650	555080660	555080670
31	Upper spacer	562550070	All DOL models			562550080	All SD models		
32	Press.relief valve	549300010	All models						
34	Upper bracket	561450150	All models						
39	Shaft sleeve	562800030	All models, 4 pieces						
40	Up thrust washer	568360040	All models						
42	Pump coupling key	572650469	All models						

Item Kits

* ->	4,5	Cable seal	5KL30AAT	Suitable for 1x25 and 1x35 mm ² cable sections
* ->	4,5	Cable seal	5KL30AAU	Suitable for 1x50 and 1x70 mm ² cable sections
* ->	9,10,12,13,14,15,26	Thrust bearing, complete	5KL41AAB	All models
* ->	23, 25, 29, 33	O-rings	5KL02AAC	All models
->	9,17,35,36,37,41,42	Screws and keys	5KL40AAC	All models
->	38	Shaft seal rings+bearing	5KL35AAB	All models, "for repairs only"

Power cable (ACS approved) - Standard length: 5 m

Section mm ²	code	suitable for:	DOL	SD	Total qty required x motor including earth cable	
					DOL	SD
1x16	572851266		--	--	21 m	37 m
1x25	572851268		--	MC10-125/150/175/200		
1x35	572851270		MC10-125			
1x50	572851272		MC10-150, MC10-175	--		
1x70	572851274		MC10-200	--		

Special configuration with mechanical seal, items 52, 54

Ceramic/carbon/NBR	5KL01AAE
Sic / Sic / NBR	5KL01AAF

** Lowara (standard) shaft extension (mm)

Shaft end	Flange internal D	Shaft D	Shaft+key	Key width
101,6 -0,3 / 0	127 h6 (-0,025 / 0)	42,85 h6 (-0,016 / 0)	47,6	9,5