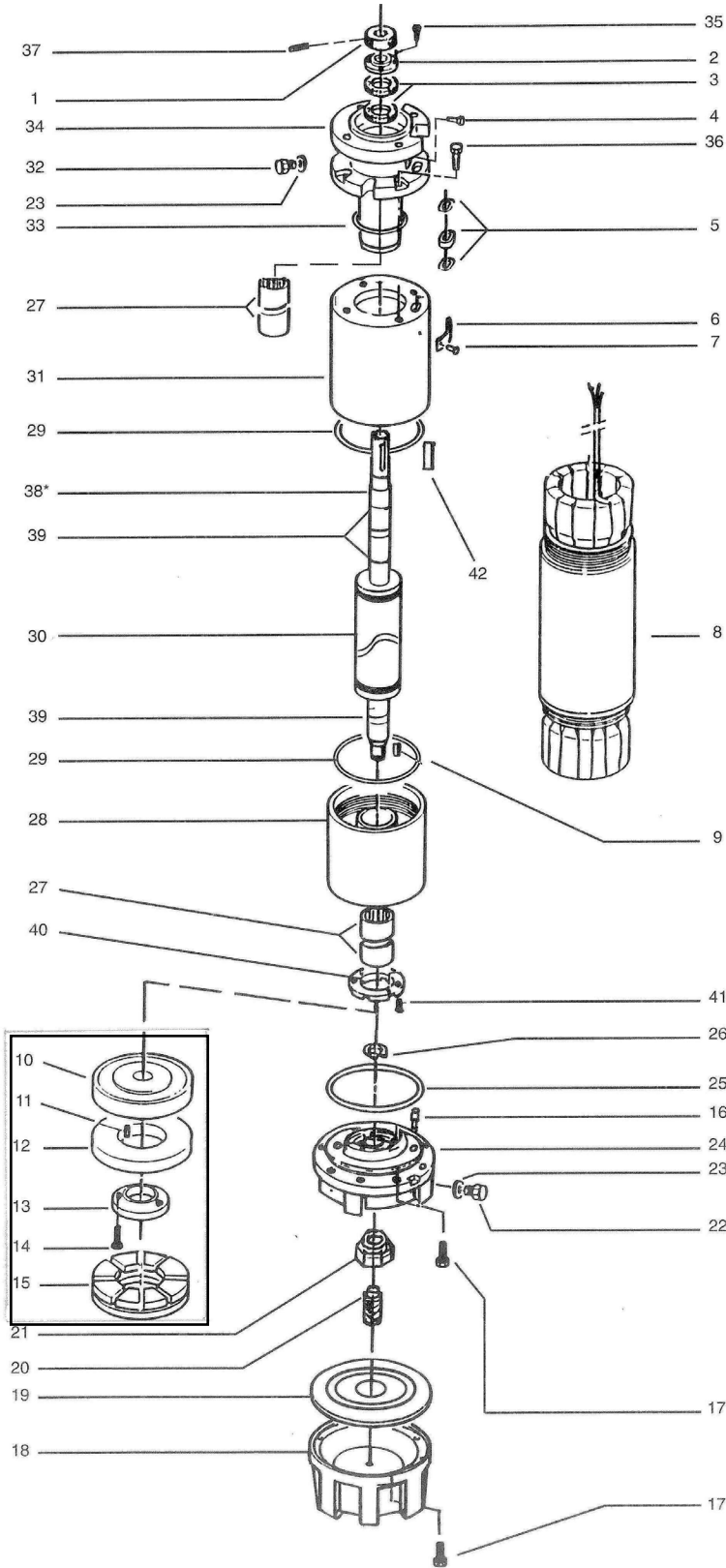
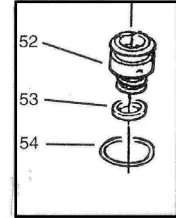


MC 10 - MC10.ME



TENUTA MECCANICA MECHANICAL SEAL



MC10 10" Submersible Motors,

ME shaft extension**

3~ 400 50 DOL starting

MC10-125	MC10-150	MC10-175	MC10-200
507026060	507026070	507026080	507026090

93 kW	110 kW	130 kW	150 kW
-------	--------	--------	--------

3~ 400/690 50 SD starting

MC10-125 SD	MC10-150 SD	MC10-175 SD	MC10-200 SD
507026065	507026075	507026085	507026095

93 kW	110 kW	130 kW	150 kW
-------	--------	--------	--------

Item Single components

1	Sand guard	568600060	All models						
2	LIP seal cover	564000040	All models						
* 3	LIP seal	572220708	All models, 2 pieces						
8	Stator assy+ cable	540640640	540640650	540640660	540640670	540640645	540640655	540640665	540640675
9	Key	572650339	All models						
16	Drive pin	562200020	All models, 2 pieces						
18	Lower cover	564250030	All models						
*19	Diaphragm	562360050	All models						
20	Adjusting screw	567200300	All models						
21	Self-locking nut	572633218	All models						
22	Filling valve	549300020	All models						
24	Thrust bracket	561450130	All models						
26	Snap ring	572651133	All models						
*27	Bearing bush	562590050	All models, 4 pieces						
28	Lower bracket	561450140	All models						
30	Shaft and rotor	555080680	555080690	555080700	555080710	555080680	555080690	555080700	555080710
31	Upper spacer	562550070	All DOL models			562550080	All SD models		
32	Press.relief valve	549300010	All models						
34	Upper bracket	561450150	All models						
39	Shaft sleeve	562800030	All models, 4 pieces						
40	Up thrust washer	568360040	All models						
42	Shaft key	572650461	All models						

Item Kits

* ->	4,5	Cable seal	5KL30AAT	Suitable for 1x25 and 1x35 mm2 cable sections
* ->	4,5	Cable seal	5KL30AAU	Suitable for 1x50 and 1x70 mm2 cable sections
* ->	9,10,12,13,14,15,26	Thrust bearing, complete	5KL41AAB	All models
* ->	23, 25, 29, 33	O-rings	5KL02AAC	All models
->	9, 17, 35, 36, 37, 41, 42	Screws and keys	5KL40AAC	All models
->	38	Shaft seal rings+bearing	5KL35AAB	All models, "for repairs only"

Power cable (ACS approved) - Standard lenght: 5 m

Section mm2	code	suitable for:	DOL	SD	Total qty required x motor including earth cable	
1x16	572851266		--	--	21 m	37 m
1x25	572851268		--	MC10-125/150/175/200		
1x35	572851270		MC10-125	--		
1x50	572851272		MC10-150, MC10-175	--		
1x70	572851274	MC10-200	--			

Special configuration with mechanical seal, items 52, 54

Ceramic/carbon/NBR	5KL01AAE
Sic / Sic / NBR	5KL01AAF

** ME shaft extension (mm)

Shaft end	Shaft dia.	Shaft+key	Key width	Flange internal dia.
101,6	49 + 0,195 / +0,21	54,77	12,7	127 h7 (-0,04 / 0)