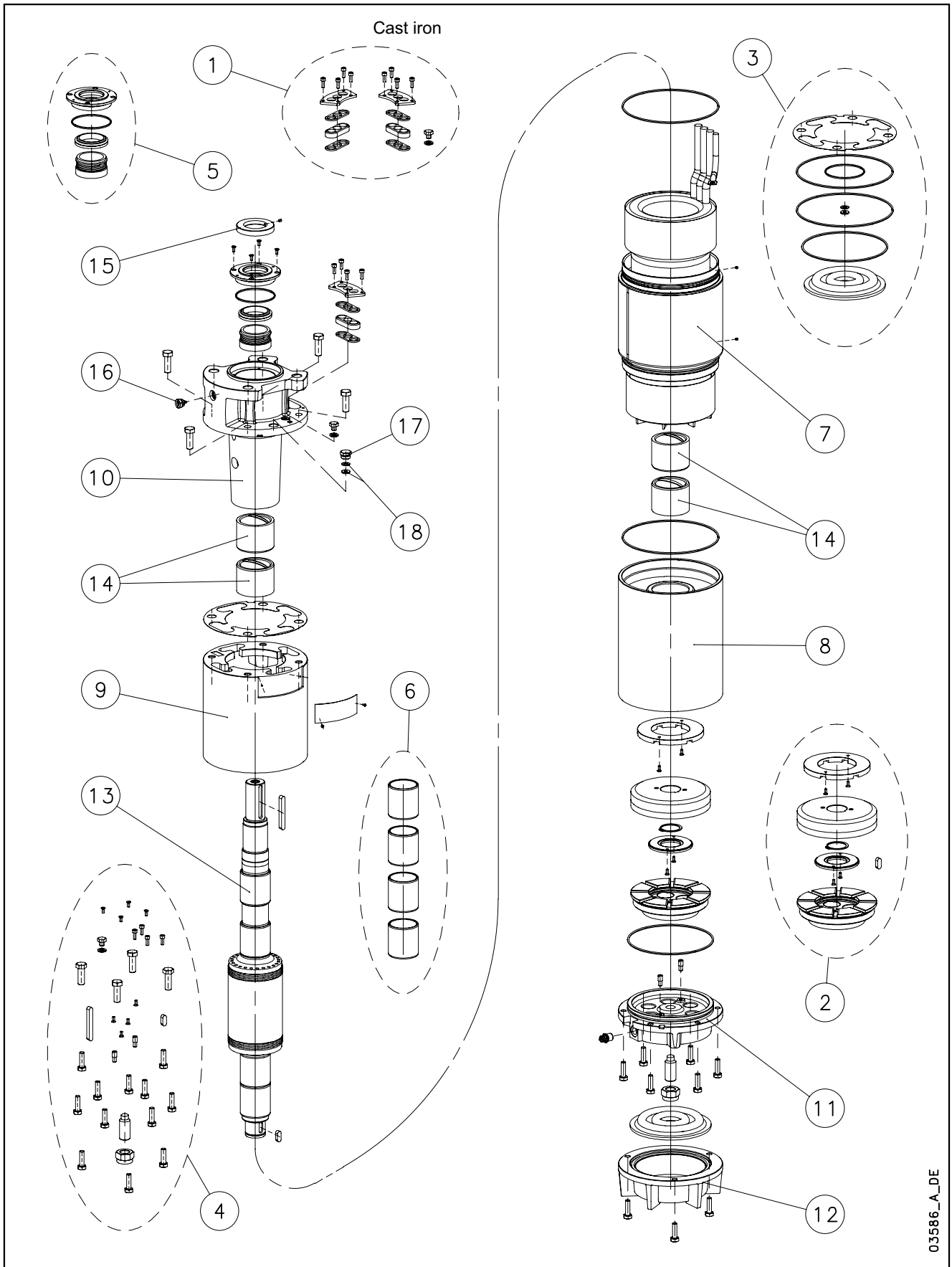


L10W-L10W HT/A - CP10W-CP10W HT/A - CP P10A-CP P10AH



03586_A_DE

N.	Descrizione it	Description en	Description fr	Beschreibung de	Descripción es	Descrição pt
1	Kit pressacavi	Kit cable glands	Kit press étoupes	Kabelverschraubungensatz	Kit sujetascable	Kit pressacabos
2	Kit reggispinta completo	Thrust bearing kit, complete	Kit palier de butée complet	Drucklagerbausatz komplet	Kit cojinete de empuje completo	Kit Apoios, completo
3	Kit guarnizioni	Seals kit	Kit Garnitures	Bausatz Dichtungen	Kit juntas	Kit guarnições
4	Kit Viterie	Screws kit	Kit Visserie	Bausatz Schrauben	Kit tornillos	Kit parafusos
5	Kit tenuta/Flangia	Kit seals / Flange	Kit garnitures / Bride	Bausatz dichtungen / Flansch	Kit juntas / Brida	Kit Empanque/Flange
6	Kit boccole	Kit bearing bush	Kit roulement à douille	Bausatz buchsenlager	Kit cojinete de casquillo	Kit rolamento em bucha
7	Statore completo	Stator assy	Stator complet	Stator komplet	Estator completo	Estator complet
8	Supporto inferiore	Lower support	Support inférieur	Untere Lagerung	Soporte inferior	Suporte inferior
9	Distanziale	Spacer	Entretoise	Distanzstück	Distanciador	Distanciador
10	Supporto superiore	Upper bracket	Support supérieur	Obere Lagerung	Soporte superior	Suporte superior
11	Supporto kit reggispinta	Thrust bearing bracket kit	Support kit palier de butée	Drucklagergehäuse	Soporte kit cojinete de empuje	Suporte Kit Apoios
12	Fondello diaframma	Bottom cover diaphragm	Couvercle inférieur soufflet	Untere Abdeckung Blasebalg	Tapa inferior de sujeta	Tampa inferior do fole
13	Albero rotore	Rotor shaft	Arbre rotor	Rotorwelle	Árbol rotor	Veio rotor
14	Boccola cuscinetto sup. / inf.	Upper / lower bush bearing	Roulement à douille supérieur / inférieur	Obere /Untere- buchsenlager	Cojinete de casquillo superior-inferior	Rolamento em bucha superior-inferior
15	Parasabbia	Sand guard	Anti-sable	Sandschutz	Protección de arena	Protecção Vedante
16	Valvola sfiato	Relief valve	Soupape de Purge	Ablassventil	Valvula de purga	Válvula
17	Tappo riempimento	Filling plug	Bouchon de remplissage	Füllstoff-Stecker	Tapón de llenado	Bujão
18	Guarnizione pressacavo	Cable gland gasket	Joint de press étoupe	Kabelverschraubungen Dichtung	Junta sujetacable	O-ring pressacabo
N.	Beschrijving nl	Περιγραφή el	Açıklama tr	Kuvaus fi	Описание ru	Opis pl
1	Kabelklem set	Σετ σφικτήρων καλωδίων	Kablo bez kiti	Kaapelinpuristinsarja	Комплект каб.уплотнителей	Zestaw mocowania kabla
2	Complete druklager set	Πλήρες σετ ωπτικού ρουλεμάν	Komple ayar pulu kiti	Täydellinen painelaakerisarja	Полный комплект упорного подшипника	Kompletny zestaw łożyska ciernego
3	Kit met dichtingen	Σετ τσιμουχών	Conta kiti	Tiivistesarja	КОМПЛЕКТ прокладок	ZESTAW Uszczelkek
4	Kit met schroeven	Σετ βιδών	Vida kiti	Ruuvisarja	КОМПЛЕКТ винтов	ZESTAW wkręty
5	Mechanische afdichting/Flens	Σετ ανοχών στεγανότητας/Φλάντζας	Mekanik conta / Flans	Tiivistesarja / Laippa	Комплект прокладок/фланца	Zestaw uszczelniaczy kołnieszka
6	Bus set	επάνω Σετ	Burç yatađı kiti	Holkilaakerisarja	КОМПЛЕКТ Подшипник со втулкой	Zestaw łożysko tulejowe
7	Stator compleet	Πλήρης στάτορας	Statör tamamı	Täydellinen staattori	Статор полный	Stator
8	Onderste steun	Κάτω φορέας	Alt segman braket	Alatuki	Нижняя опора	Dolny wspornik
9	Afstandsstuk	Αποστάσεων	Ara halkası	Välilevy	Распорная	Część dystansowa
10	Bovenste steun	Επάνω φορέας	Ust braket	Ylätuki	Верхняя опора	Górny wspornik
11	Steun druklager kit	Φορέας σετ ωπτικού ρουλεμάν	Bindirme yatađı kiti desteđi	Painelaakerisarjan tuki	Опора комплекта упорного подшипника	Wspornik zestawu łożyska wzdużnego
12	Bedekking onderkant de membraan	Κάλυμμα διαφράγματος	Zeminlemek kapađı Diyafram	Alaosan, kalvo	диафрагма основания крышка	Dolna pokrywa Ko nierz
13	Rotoras	Άξονας στροφείου	Rotor mili	Roottorin akseli	ось ротора	Wałek (z rotorem)
14	Bovenste /Onderste- Bus	Κορυφή / Κάτω έσφαιρου ρουλεμάν	Burç yatađı üstteki / alt	Holkilaakeri ylempi - alempi	Подшипник со втулкой верхне / низко	łożysko tulejowe wyższy / obniżać
15	Beschermkap	Προστατευτικό άμμου	Kum sızıntısı önleme	Hiekka suoja	Защита от песка	Ochrona przeciw-piaskowa
16	Ontluchtingsventiel	Βαλβίδα εξαερισμού	Tahliye valfi	Paineenrajotusventtiili	Редукционный клапан	Zawór odpowietrzający
17	Vulplug	Πώμα πλήρωσης	Şarj fişı	Täyttötulppa	Пробка заполнения	Korek zalewowy
18	Kabelklem pakking	Περιβλήμα σφικτήρα καλωδίων	Kablo bez contası	Kaapelinpuristimen tiiviste	Прокладка уплотнителей кабеля	Uszczelniaacz kabla

L10WN/A 10" Submersible Motors

L10WN 3Ph 400V 50Hz DOL	code	930T405/A 507056810	1100T405/A 507056820	1300T405/A 507056830	1500T405/A 507056840
L10WN 3Ph 400/690V 50Hz SD	code	930T405/A 507056815	1100T405/A 507056825	1300T405/A 507056835	1500T405/A 507056845
	kW	93	110	130	150

1	Kit cable glands A316 EPDM 1X25/3E	5KL30ABX			
	Kit cable glands A316 EPDM 1X50/7C	5KL30AB1	All models DOL 110-150 kW		
*2	Kit thrust bearing	5KL41AAG	All models		
*3	Kit seals NBR	5KL02AAK	All models		
4	Kit screws A316	5KL40AAL	All models		
*5	Kit MECH CER/CARB/NBR D55 / Cover	5KL01AAE	All models with MECH Cover A316		
6	Kit bush bearing chromate	5KL35AAG	All models	For REPAIR only	
8	Lower support A316	561400160	All models		
9	Upper spacer	562500310	All models		
10	Upper bracket DOL	561400760	All models		
	Upper bracket SD	561400770	All models		
11	Thrust bearing bracket	561400200	All models		
	Filling valve	549300040	All models		
12	Bottom cover	564200070	All models		
*14	Upper/lower bush bearing	562590050	All models, N. 4		
15	Sand guard A316	568600060	All models		
16	Release valve A316 NBR	549300070	All models		
17	Plug A316	540500010	All models		
18	Cable gland EPDM (plug item 17)	568560290	All models		
	Washer (plug item 17)	572635010	All models		

7	Stator assy DOL	code	540640750	540640760	540640770	540640780
	Stator assy SD		540640755	540640765	540640775	540640785
13	Rotor shaft duplex	code	555080640	555080650	555080660	555080670

PVC Winding Wire					
400-3-50 DOL					
Wire Code	573325815	573325816	573325818	573325815	
Wire Type	D1,9/2,7	D2,0/2,9	D2,2/3,2	D1,9/2,7	
Tot wire need [m]	930	900	870	1235	
400/690-3-50 SD					
Wire Code	573325815	573325816	573325818	573325815	
Wire Type	D1,9/2,7	D2,0/2,9	D2,2/3,2	D1,9/2,7	
Tot wire need [m]	930	900	870	1235	
In case of order, the quantity delivered will depend from the coil currently available.					

Flat Power cable H07BB-F ACS approved					
400-3-50 DOL					
Cable code - 1m	572851270	572851272	572851274	572851274	
Section (mm2)	1X35	1X50	1X70	2X70	
Cable code , ground - 5,5 m	556990050	556990060	556990070	556990070	
Section (mm2)	1X35	1X50	1X70	1X70	
400/690-3-50 SD					
Cable code - 1m	572851266	572851268	572851268	572851270	
Section (mm2)	1X16	1X25	1X25	2X35	
Cable code , ground - 5,5m	556990030	556990040	556990040	556990050	
Section (mm2)	1X16	1X25	1X25	1X35	

Special Versions					
1	Kit cable glands A316 FPM 1X25/3E	5KL30ABY			
	Kit cable glands A316 FPM 1X50/70	5KL30AB2	All models DOL 110-150 kW		
*3	Kit seals FPM	TBD	All models		
*5	Kit MECH SIC/SIC/NBR D55 / Cover	5KL01AAF	All models with MECH Cover A316		
16	Release valve FPM	549300071	All models		
17	Plug A316 for PT100	540500020	All models		
18	Cable gland gasket EPDM	568560290	All models, n. 2 for PT100		
	Cable gland gasket FPM	568560291	All models, n. 2 for PT100		
	Kit PT100 EPDM	5KL30AAY	All models		

* Recommended spare parts - Parti di ricambio consigliate
 * Pièces détachées conseillées - Empfohlene Ersatzteile

xylem

