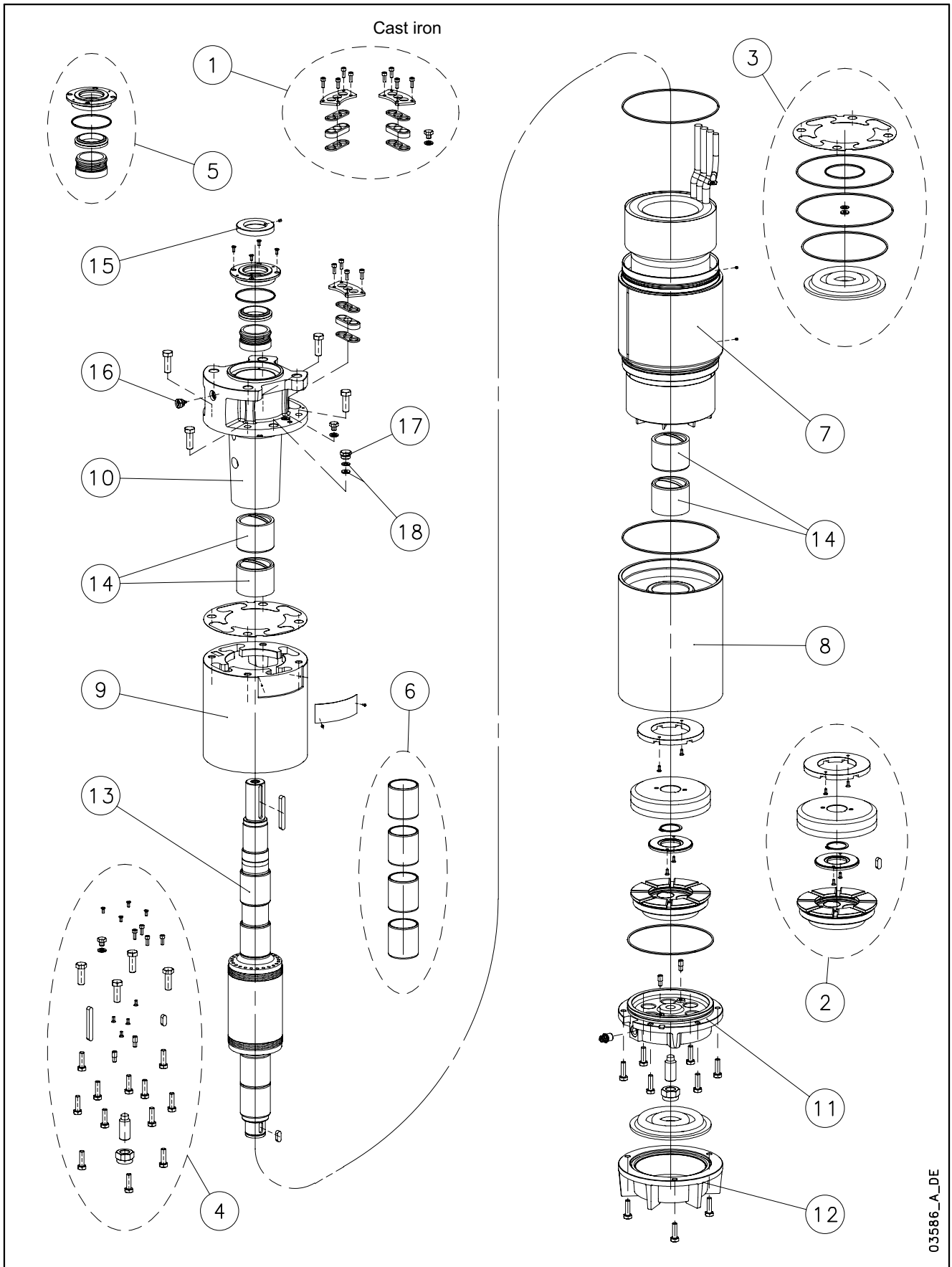


L10W-L10W HT/A - CP10W-CP10W HT/A - CP P10A-CP P10AH



03586_A_DE

N.	Descrizione it	Description en	Description fr	Beschreibung de	Descripción es	Descrição pt
1	Kit pressacavi	Kit cable glands	Kit press étoupes	Kabelverschraubungensatz	Kit sujetascable	Kit pressacabos
2	Kit reggispinta completo	Thrust bearing kit, complete	Kit palier de butée complet	Drucklagerbausatz komplet	Kit cojinete de empuje completo	Kit Apoios, completo
3	Kit guarnizioni	Seals kit	Kit Garnitures	Bausatz Dichtungen	Kit juntas	Kit guarnições
4	Kit Viterie	Screws kit	Kit Visserie	Bausatz Schrauben	Kit tornillos	Kit parafusos
5	Kit tenuta/Flangia	Kit seals / Flange	Kit garnitures / Bride	Bausatz dichtungen / Flansch	Kit juntas / Brida	Kit Empanque/Flange
6	Kit boccole	Kit bearing bush	Kit roulement à douille	Bausatz buchsenlager	Kit cojinete de casquillo	Kit rolamento em bucha
7	Statore completo	Stator assy	Stator complet	Stator komplet	Estator completo	Estator complet
8	Supporto inferiore	Lower support	Support inférieur	Untere Lagerung	Soporte inferior	Suporte inferior
9	Distanziale	Spacer	Entretoise	Distanzstück	Distanciador	Distanciador
10	Supporto superiore	Upper bracket	Support supérieur	Obere Lagerung	Soporte superior	Suporte superior
11	Supporto kit reggispinta	Thrust bearing bracket kit	Support kit palier de butée	Drucklagergehäuse	Soporte kit cojinete de empuje	Suporte Kit Apoios
12	Fondello diaframma	Bottom cover diaphragm	Couvercle inférieur soufflet	Untere Abdeckung Blasebalg	Tapa inferior de sujeta	Tampa inferior do fole
13	Albero rotore	Rotor shaft	Arbre rotor	Rotorwelle	Árbol rotor	Veio rotor
14	Boccola cuscinetto sup. / inf.	Upper / lower bush bearing	Roulement à douille supérieur / inférieur	Obere /Untere- buchsenlager	Cojinete de casquillo superior-inferior	Rolamento em bucha superior-inferior
15	Parasabbia	Sand guard	Anti-sable	Sandschutz	Protección de arena	Protecção Vedante
16	Valvola sfiato	Relief valve	Soupape de Purge	Ablassventil	Valvula de purga	Válvula
17	Tappo riempimento	Filling plug	Bouchon de remplissage	Füllstoff-Stecker	Tarón de llenado	Bujão
18	Guarnizione pressacavo	Cable gland gasket	Joint de press étoupe	Kabelverschraubungen Dichtung	Junta sujetacable	O-ring pressacabo
N.	Beschrijving nl	Περιγραφή el	Açıklama tr	Kuvaus fi	Описание ru	Opis pl
1	Kabelklem set	Σετ σφικτήρων καλωδίων	Kablo bez kiti	Kaapelinpuristinsarja	Комплект каб.уплотнителей	Zestaw mocowania kabla
2	Complete drucklager set	Πλήρες σετ ωπτικού ρουλεμάν	Komple ayar pulu kiti	Täydellinen painelaakerisarja	Полный комплект упорного подшипника	Kompletny zestaw łożyska ciernego
3	Kit met dichtingen	Σετ τσιμουχών	Conta kiti	Tiivistesarja	КОМПЛЕКТ прокладок	ZESTAW Uszczelek
4	Kit met schroeven	Σετ βιδών	Vida kiti	Ruuvisarja	КОМПЛЕКТ винтов	ZESTAW wkręty
5	Mechanische afdichting/Flens	Σετ ανοχών στεγανότητας/Φλάντζας	Mekanik conta / Flans	Tiivistesarja / Laippa	Комплект прокладок/фланца	Zestaw uszczelniaczy kołnieszka
6	Bus set	επάνω Σετ	Burç yatađı kiti	Holkilaakerisarja	КОМПЛЕКТ Подшипник со втулкой	Zestaw łożysko tulejowe
7	Stator compleet	Πλήρης στάτορας	Statör tamamı	Täydellinen staattori	Статор полный	Stator
8	Onderste steun	Κάτω φορέας	Alt segman braket	Alatuki	Нижняя опора	Dolny wspornik
9	Afstandsstuk	Αποστάσεων	Ara halkası	Välilevy	Распорная	Część dystansowa
10	Bovenste steun	Επάνω φορέας	Ust braket	Ylätuki	Верхняя опора	Górny wspornik
11	Steun drucklager kit	Φορέας σετ ωπτικού ρουλεμάν	Bindirme yatađı kiti desteđi	Painelaakerisarjan tuki	Опора комплекта упорного подшипника	Wspornik zestawu łożyska wzdużnego
12	Bedekking onderkant de membraan	Κάλυμμα διαφράγματος	Zeminlemek karađı Diyafram	Alaosan, kalvo	диафрагма основания крышка	Dolna pokrywa Ko nierz
13	Rotoras	Άξονας στροφείου	Rotor mili	Roottorin akseli	ось ротора	Wałek (z rotorem)
14	Bovenste /Onderste- Bus	Κορυφή / Κάτω έσφαιρου ρουλεμάν	Burç yatađı üstteki / alt	Holkilaakeri ylempi - alempi	Подшипник со втулкой верхне / низко	łożysko tulejowe wyższy / obniżać
15	Beschermkap	Προστατευτικό άμμου	Kum sizintisi önleme	Hiekka suoja	Защита от песка	Ochrona przeciw-piaskowa
16	Ontluchtingsventiel	Βαλβίδα εξαερισμού	Tahliye valfi	Paineenrajotusventtiili	Редукционный клапан	Zawór odpowietrzający
17	Vulplug	Πώμα πλήρωσης	Şarj fişı	Täyttötulppa	Пробка заполнения	Korek zalewowy
18	Kabelklem pakking	Περιβλήμα σφικτήρα καλωδίων	Kablo bez contası	Kaapelinpuristimen tiiviste	Прокладка уплотнителей кабеля	Uszczelniaacz kabla

CP10W 10" Submersible Motors

3~ 380-415 50				3~ 400/690 50			
DOL		SD		DOL		SD	
930T405	1100T405	1300T405	1500T405	930T405	1100T405	1300T405	1500T405
507016010	507016020	507016030	507016040	507016015	507016025	507016035	507016045
93 kW	110 kW	130 kW	150 kW	93 kW	110 kW	130 kW	150 kW

Component

1	Sand guard	568600060	All models						
2	Mech seal cover	564000040	All models						
* 3	Lip seal	-							
8	Stator assy w/cable	540640640	540640650	540640660	540640670	540640645	540640655	540640665	540640675
	PVC Wire Code	573325815	573325816	573325818	573325815	573325815	573325816	573325818	573325815
	PVC Wire Type	D1,9/2,7	D2,0/2,9	D2,2/3,2	D1,9/2,7	D1,9/2,7	D2,0/2,9	D2,2/3,2	D1,9/2,7
	Tot wire need [m]	915	830	860	1310	915	830	860	1310
9	Key	572650339	All models						
16	Dragging dowel	562200020	All models, 2 pcs						
18	Bottom cover	564250030	All models						
*19	Diaphragm	562360050	All models						
20	Adjusting screw	567200300	All models						
21	Locking nut	572633218	All models						
22	Filling valve	549300020	All models						
24	Thrust bearing bracket	561450130	All models						
26	Stop ring	572651133	All models						
*27	Bearing bush	562590050	All models, 4 pcs						
28	Lower bracket	561450140	All models						
30	Shaft w/rotor	555080640	555080650	555080660	555080670	555080640	555080650	555080660	555080670
31	Upper spacer	562550070	562550070	562550070	562550070	562550080	562550080	562550080	562550080
32	Release valve	549300010	All models						
34	Upper bracket	561450150	All models						
39	Journal sleeve chroma	562800030	All models, 4 pcs						
40	Up thrust washer	568360040	All models						
42	Key	572650469	All models						

Kit

* ->	4 -5	Cable glands	5KL30AAT	Cable section 1x25-35 (mm2)
* ->	4 - 5	Cable glands	5KL30AAU	Cable section 1x50-70 (mm2)
* ->	9,10,12-15,26	Thrust bearing	5KL41AAB	All models
* ->	23, 25, 29, 33	ORings	5KL02AAC	All models
->	9,17,35-37,41-42	Screws	5KL40AAC	All models
->	38	Repair set	5KL35AAB	FOR REPAIRS ONLY (Shaft seal rings, chromate sleeve)

Power cable		ACS approved	Total qty required					
Section mm2	code / m	suitable for:	incl. ground cable					
1x25	572851268	DOL	93-110-130 KW	DOL				
1x35	572851270				SD	SD		
1x50	572851272						25 m	40 m
1x70	572851274							

Mechanical seal, items 52, 54

Ceramic/carbon/NBR	5KL01AAE	Standard motor
Sic / Sic / NBR	5KL01AAF	Special version

Power cable ACS approved lenght standard: 5,5 m

Section mm2	code	suitable for:	DOL	SD
1x25	556990040		93 KW	93-110-130 KW
1x35	556990050			150 KW
1x50	556990060			110 - 130 KW
1x70	556990070			150 KW

xylem

