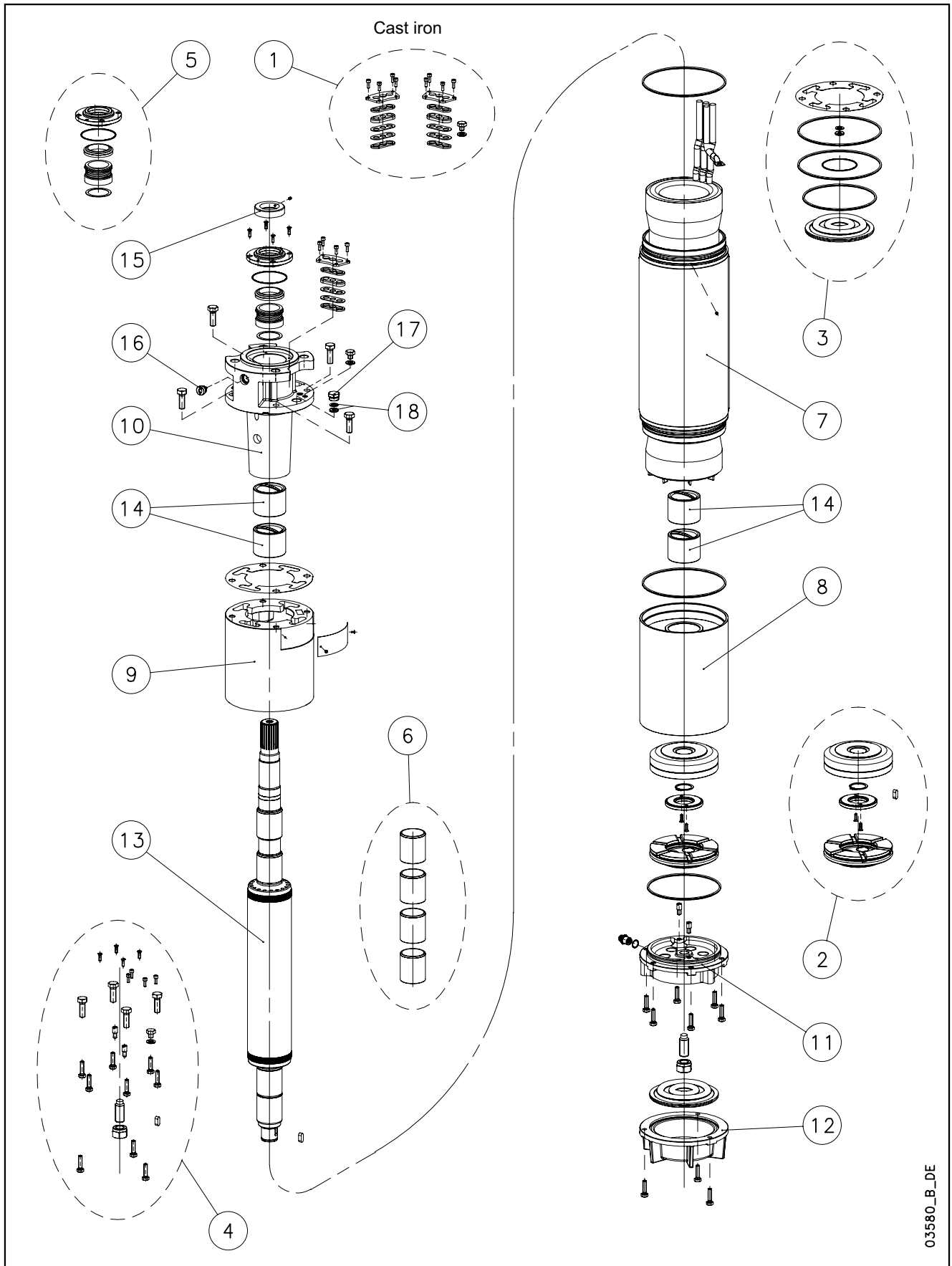


L8W-L8W HT/A - CP8W-CP8W HT/A - CP P8A-CP P8AH



03580_B_DE

N.	Descrizione it	Description en	Description fr	Beschreibung de	Descripción es	Descrição pt
1	Kit pressacavi	Kit cable glands	Kit press étoupes	Kabelverschraubungensatz	Kit sujetascable	Kit pressacabos
2	Kit reggispinta completo	Thrust bearing kit, complete	Kit palier de butée complet	Drucklagerbausatz komplet	Kit cojinete de empuje completo	Kit Apoios, completo
3	Kit guarnizioni	Seals kit	Kit Garnitures	Bausatz Dichtungen	Kit juntas	Kit guarnições
4	Kit Viterie	Screws kit	Kit Visserie	Bausatz Schrauben	Kit tornillos	Kit parafusos
5	Kit tenuta/Flangia	Kit seals / Flange	Kit garnitures / Bride	Bausatz dichtungen / Flansch	Kit juntas / Brida	Kit Empanque/Flange
6	Kit boccole	Kit bearing bush	Kit roulement à douille	Bausatz buchsenlager	Kit cojinete de casquillo	Kit rolamento em bucha
7	Statore completo	Stator assy	Stator complet	Stator komplet	Estator completo	Estator complet
8	Supporto inferiore	Lower support	Support inférieur	Untere Lagerung	Soporte inferior	Suporte inferior
9	Distanziale	Spacer	Entretoise	Distanzstück	Distanciador	Distanciador
10	Supporto superiore	Upper bracket	Support supérieur	Obere Lagerung	Soporte superior	Suporte superior
11	Supporto kit reggispinta	Thrust bearing bracket kit	Support kit palier de butée	Drucklagergehäuse	Soporte kit cojinete de empuje	Suporte Kit Apoios
12	Fondello diaframma	Bottom cover diaphragm	Couvercle inférieur soufflet	Untere Abdeckung Blasebalg	Tapa inferior de sujeta	Tampa inferior do fole
13	Albero rotore	Rotor shaft	Arbre rotor	Rotorwelle	Árbol rotor	Veio rotor
14	Boccola cuscinetto sup. / inf.	Upper / lower bush bearing	Roulement à douille supérieur / inférieur	Obere /Untere- buchsenlager	Cojinete de casquillo superior-inferior	Rolamento em bucha superior-inferior
15	Parasabbia	Sand guard	Anti-sable	Sandschutz	Protección de arena	Protecção Vedante
16	Valvola sfiato	Relief valve	Soupape de Purge	Ablassventil	Valvula de purga	Válvula
17	Tappo riempimento	Filling plug	Bouchon de remplissage	Füllstoff-Stecker	Tarón de llenado	Bujão
18	Guarnizione pressacavo	Cable gland gasket	Joint de press étoupe	Kabelverschraubungen Dichtung	Junta sujetacable	O-ring pressacabo
N.	Beschrijving nl	Περιγραφή el	Açıklama tr	Kuvaus fi	Описание ru	Opis pl
1	Kabelklem set	Σετ σφικτήρων καλωδίων	Kablo bez kiti	Kaapelinpuristinsarja	Комплект каб.уплотнителей	Zestaw mocowania kabla
2	Complete druklager set	Πλήρες σετ ωπτικού ρουλεμάν	Komple ayar pulu kiti	Täydellinen painelaakerisarja	Полный комплект упорного подшипника	Kompletny zestaw łożyska ciernego
3	Kit met dichtingen	Σετ τσιμουχών	Conta kiti	Tiivistesarja	КОМПЛЕКТ прокладок	ZESTAW Uszczelek
4	Kit met schroeven	Σετ βιδών	Vida kiti	Ruuvisarja	КОМПЛЕКТ винтов	ZESTAW wkręty
5	Mechanische afdichting/Flens	Σετ ανοχών στεγανότητας/Φλάντζας	Mekanik conta / Flans	Tiivistesarja / Laippa	Комплект прокладок/фланца	Zestaw uszczelniaczy kołnieszka
6	Bus set	επάνω Σετ	Burç yatağı kiti	Holkilaakerisarja	КОМПЛЕКТ Подшипник со втулкой	Zestaw łożysko tulejowe
7	Stator compleet	Πλήρης στάτορας	Statör tamamı	Täydellinen staattori	Статор полный	Stator
8	Onderste steun	Κάτω φορέας	Alt segman braket	Alatuki	Нижняя опора	Dolny wspornik
9	Afstandsstuk	Αποστάσεων	Ara halkası	Välilevy	Распорная	Część dystansowa
10	Bovenste steun	Επάνω φορέας	Ust braket	Ylätuki	Верхняя опора	Górny wspornik
11	Steun druklager kit	Φορέας σετ ωπτικού ρουλεμάν	Bindirme yatağı kiti desteği	Painelaakerisarjan tuki	Опора комплекта упорного подшипника	Wspornik zestawu łożyska wzdużnego
12	Bedekking onderkant de membraan	Κάλυμμα διαφράγματος	Zeminlemek kapağı Diyafram	Alaosan, kalvo	диафрагма основания крышка	Dolna pokrywa Ko nierz
13	Rotoras	Άξονας στροφείου	Rotor mili	Roottorin akseli	ось ротора	Wałek (z rotorem)
14	Bovenste /Onderste- Bus	Κορυφή / Κάτω έσφαιρου ρουλεμάν	Burç yatağı üstteki / alt	Holkilaakeri ylempi - alempi	Подшипник со втулкой верхне / низко	łożysko tulejowe wyższy / obniżać
15	Beschermkap	Προστατευτικό άμμου	Kum sızıntısı önleme	Hiekka suoja	Защита от песка	Ochrona przeciw-piaskowa
16	Ontluchtingsventiel	Βαλβίδα εξαερισμού	Tahliye valfi	Paineenrajotusventtiili	Редукционный клапан	Zawór odpowietrzający
17	Vulplug	Πώμα πλήρωσης	Şarj fişi	Täyttötulppa	Пробка заполнения	Korek zalewowy
18	Kabelklem pakking	Περιβλημα σφικτήρα καλωδίων	Kablo bez contası	Kaapelinpuristimen tiiviste	Прокладка уплотнителей кабеля	Uszczelniaacz kabla

L8W/B 8" Submersible Motors

L8W 3Ph 400V 50Hz DOL	code	300T405/B	370T405/B	450T405/B	520T405/B	550T405/B	600T405/B	670T405/B	750T405/B	830T405/B	930T405/B
		507153030	507153040	507153050	507153060	507153070	507153080	507153090	507153100	507153110	507153120
L8W 3Ph 400/690V 50Hz SD	code	300T405/B	370T405/B	450T405/B	520T405/B	550T405/B	600T405/B	670T405/B	750T405/B	830T405/B	930T405/B
		507153035	507153045	507153055	507153065	507153075	507153085	507153095	507153105	507153115	507153125
	kW	30	37	45	52	55	60	67	75	83	93

1	Kit cable glands EPDM 1X6-10-16	5KL30ABR									Kits common to L8W & L8W/A
	Kit cable glands EPDM 1X25-35	5KL30ABS	DOL models 67-93 kW								
	Plug cable gland EPDM	568560420									
*2	Kit thrust bearing	5KL41AAA	All models								
*3	Kit seals NBR	5KL02AAB	All models								
4	Kit screws A304	5KL40AAB	All models								
*5	Kit MECH D45 /Cover CER/CARB/FPM	5KL01AAC	All models MECH cover A316								
6	Kit chromate bush bearing	5KL35AAF	All models For REPAIR only								
8	Lower support cast iron	561450630	All models ACS approved paint								
9	Upper Spacer	562550160	All models ACS approved paint								
10	Upper bracket DOL	561450640	All models ACS approved paint								
	Upper bracket DOL L8W/6	561450641	All models ACS approved paint								
	Upper bracket SD	561450650	All models ACS approved paint								
11	Thrust bearing bracket	561450620	All models ACS approved paint								
	Filling valve A316 EPDM	549300040	All models								
12	Bottom cover	564250080	All models ACS approved paint								
*14	Kit carbon bush bearing	5KL35AAC	All models								
15	Sand guard A316	568600040	All models								
16	Release valve A316 NBR	549300070	All models								
17	Plug A316	540500010	All models								
18	Cable gland EPDM (plug item 17)	568560290	All models								
	Washer (plug item 17)	572635010	All models								

7	Stator assy DOL	code	540640220	540640230	540640240	540640250	540640260	540640270	540640280	540640290	540640300	540640310
	Stator assy SD		540640225	540640235	540640245	540640255	540640265	540640275	540640285	540640295	540640305	540640315
13	Rotor shaft DUPLEX	code	555080220	555080230	555080240	555080250	555080260	555080270	555080280	555080290	555080300	555080310

PVC Winding Wire												
400-3-50 DOL												
Wire Code	573325817	573325812	573325814	573325816	573325818	573325817	573325818	573325812	573325813	573325814	573325817	573325818
Wire Type	D2,1/3,1	D1,6/2,4	D1,8/2,6	D2,0/2,9	D2,0/2,9	D2,1/3,1	D2,2/3,2	D1,6/2,4	D1,7/2,5	D1,8/2,6		
Tot wire need [m]	395	745	685	640	580	595	605	1025	1110	1170		
400/690-3-50 SD												
Wire Code	573325817	573325812	573325814	573325816	573325818	573325817	573325818	573325812	573325813	573325814	573325817	573325818
Wire Type	D2,1/3,1	D1,6/2,4	D1,8/2,6	D2,0/2,9	D2,0/2,9	D2,1/3,1	D2,2/3,2	D1,6/2,4	D1,7/2,5	D1,8/2,6		
Tot wire need [m]	395	745	685	640	575	595	605	1025	1110	1170		
In case of order, the quantity delivered will depend from the coil currently available.												

Flat Power cable H07BB-F ACS approved												
400-3-50 DOL												
Cable code - 1m	572851264	572851264	572851266	572851266	572851266	572851266	572851268	572851268	572851270	572851270		
Section (mm2)	1X10	1X10	1X16	1X16	1X16	1X16	1X25	1X25	1X35	1X35		
Cable code , ground - 5,5 m	556990020	556990020	556990030	556990030	556990030	556990030	556990040	556990040	556990050	556990050		
Section (mm2)	1X10	1X10	1X16	1X16	1X16	1X16	1X25	1X25	1X35	1X35		
400/690-3-50 SD												
Cable code - 1m	572851262	572851262	572851262	572851264	572851264	572851264	572851264	572851266	572851266	572851266	572851266	572851266
Section (mm2)	1X6	1X6	1X6	1X10	1X10	1X10	1X10	1X16	1X16	1X16	1X16	1X16
Cable code , ground - 5,5m	556990020	556990020	556990020	556990020	556990020	556990020	556990020	556990030	556990030	556990030	556990030	556990030
Section (mm2)	1X10	1X10	1X10	1X10	1X10	1X10	1X10	1X16	1X16	1X16	1X16	1X16

Special Versions												
*3	Kit seals FPM	5KL02AAH	All models									
*5	Kit MECH D45 / Cover SIC/SIC/NBR /A304	5KL01AAD	All models									
16	Release valve FPM	549300071	All models									
17	Plug 316 SS for PT100	540500020	All models									
18	Cable gland gasket EPDM	568560290	All models, n. 2 for PT100									
	Cable gland gasket FPM	568560291	All models, n. 2 for PT100									
	Kit cable gland PT100 EPDM	5KL30AAX	All models									

(6) = WARNING. These parts replacement requires an Authorized Service.

* Recommended spare parts - Parti di ricambio consigliate
 * Pièces détachées conseillées - Empfohlene Ersatzteile

L8W/B HT 6" Submersible Motors High Temperature

L8W	300T405/B	370T405/B	450T405/B	520T405/B	550T405/B	600T405/B	670T405/B	750T405/B	830T405/B	
3Ph 400V 50Hz DOL HT	code 507163040	507163050	507163060	507163070	507163080	507163090	507163100	507163110	507163120	
L8W	300T405/B	370T405/B	450T405/B	520T405/B	550T405/B	600T405/B	670T405/B	750T405/B	830T405/B	
3Ph 400/690V 50Hz SD HT	code 507163045	507163055	507163065	507163075	507163085	507163095	507163105	507163115	507163125	
	kW	30	37	45	52	55	60	67	75	83

1	Kit cable glands EPDM 1X6/10/16	5KL30ABR								Kits common to L8W & L8W/A	
	Kit cable glands EPDM 1X25/35	5KL30ABS	DOL models 60-83 kW								
	Plug cable gland EPDM	568560420									
*2	Kit thrust bearing	5KL41AAA	All models								
*3	Kit seals NBR	5KL02AAB	All models								
4	Kit screws	5KL40AAB	All models								
*5	Kit MECH D45 /Cover CER/CARB/FPM	5KL01AAC	All models MECH cover A316								
6	Kit chromate bearing bush	5KL35AAF	All models								
8	Lower support cast iron	561450630	All models ACS approved paint								
9	Upper Spacer	562550160	All models ACS approved paint								
10	Upper bracket DOL	561450640	All models ACS approved paint								
	Upper bracket DOL L8W/6	561450641	All models ACS approved paint								
	Upper bracket SD	561450650	All models ACS approved paint								
11	Thrust bearing bracket	561450620	All models ACS approved paint								
	Filling valve A316 EPDM	549300040	All models								
12	Bottom cover	564250080	All models ACS approved paint								
*14	Kit carbon bearing bush	5KL35AAC	All models								
15	Sand guard 316 SS	568600040	All models								
16	Release valve A316 NBR	549300070	All models								
17	Plug A316	540500010	All models								
18	Cable gland EPDM (plug item 17)	568560290	All models								
	Washer (plug item 17)	572635010	All models								

7	Stator assy DOL HT	code 54064023B	54064024B	54064025B	54064026B	54064027B	54064028B	54064029B	54064030B	54064031B
	Stator assy SD HT	code 54064023D	54064024D	54064025D	54064026D	54064027D	54064028D	54064029D	54064030D	54064031D
13	Rotor shaft 420SS	code 555080230	555080240	555080250	555080260	555080270	555080280	555080290	555080300	555080310

Stator 54064031B is no more feasible due to modified winding wire features

HT/HD Winding Wire										
		400-3-50 DOL								
Wire Code		573325840	573325842	573325845	573325845	573325846	573325846	573325840	573325841	573325842
Wire Type		D1,4/2,4	D1,6/2,6	D1,9/2,9	D1,9/2,9	D2,0/3,1	D2,0/3,1	D1,4/2,4	D1,5/2,5	D1,6/2,6
Tot wire need [m]		750	685	640	575	595	605	1025	1110	1170
		400/690-3-50 SD								
Wire Code		573325840	573325842	573325845	573325845	573325846	573325846	573325840	573325841	573325842
Wire Type		D1,4/2,4	D1,6/2,6	D1,9/2,9	D1,9/2,9	D2,0/3,1	D2,0/3,1	D1,4/2,4	D1,5/2,5	D1,6/2,6
Tot wire need [m]		700	660	640	575	595	605	1165	1110	1170

In case of order, the quantity delivered will depend from the coil currently available.

Flat Power cable H07BB-F ACS approved										
		400-3-50 DOL								
Cable code - 1m		572851264	572851266	572851266	572851266	572851266	572851268	572851268	572851270	572851270
Section (mm2)		1X10	1X16	1X16	1X16	1X16	1X25	1X25	1X35	1X35
Cable code, ground - 5,5m		556990020	556990030	556990030	556990030	556990030	556990040	556990040	556990050	556990050
Section (mm2)		1X10	1X16	1X16	1X16	1X16	1X25	1X25	1X35	1X35
		400/690-3-50 SD								
Cable code - 1m		572851262	572851262	572851264	572851264	572851264	572851264	572851266	572851266	572851266
Section (mm2)		1X6	1X6	1X10	1X10	1X10	1X10	1X16	1X16	1X16
Cable code, ground - 5,5m		556990020	556990020	556990020	556990020	556990020	556990020	556990030	556990030	556990030
Section (mm2)		1X10	1X10	1X10	1X10	1X10	1X10	1X16	1X16	1X16

Special Versions		
*5	Kit MECH D45 / Cover SIC/SIC/NBR - A304	5KL01AAD All models

(6) = WARNING. These parts replacement requires an Authorized Service.

L8W/B 8" Submersible Motors

L8W	300T235/B	370T235/B	450T235/B	520T235/B	550T235/B	600T235/B	670T235/B	750T235/B	830T235/B	930T235/B	
3Ph 230V 50Hz DOL	code	507153041									
L8W	300T235/B	370T235/B	450T235/B	520T235/B	550T235/B	600T235/B	670T235/B	750T235/B	830T235/B	930T235/B	
3Ph 230/400V 50Hz SD	code										
	kW	30	37	45	52	55	60	67	75	83	93

1	Kit cable glands EPDM 1X6-10-16	5KL30ABR									
	Kit cable glands EPDM 1X25-35	5KL30ABS	DOL models 67-93 kW		Kits common to L8W & L8W/A						
	Plug cable gland EPDM	568560420									
*2	Kit thrust bearing	5KL41AAA	All models								
*3	Kit seals NBR	5KL02AAB	All models								
4	Kit screws A304	5KL40AAB	All models								
*5	Kit MECH D45 /Cover CER/CARB/FPM	5KL01AAC	All models MECH cover A316								
6	Kit chromate bush bearing	5KL35AAF	All models For REPAIR only								
8	Lower support cast iron	561450630	All models ACS approved paint								
9	Upper Spacer	562550160	All models ACS approved paint								
10	Upper bracket DOL	561450640	All models ACS approved paint								
	Upper bracket DOL L8W/6	561450641	All models ACS approved paint								
	Upper bracket SD	561450650	All models ACS approved paint								
11	Thrust bearing bracket	561450620	All models ACS approved paint								
	Filling valve A316 EPDM	549300040	All models								
12	Bottom cover	564250080	All models ACS approved paint								
*14	Kit carbon bush bearing	5KL35AAC	All models								
15	Sand guard A316	568600040	All models								
16	Release valve A316 NBR	549300070	All models								
17	Plug A316	540500010	All models								
18	Cable gland EPDM (plug item 17)	568560290	All models								
	Washer (plug item 17)	572635010	All models								

7	Stator assy DOL	code	540640231									
	Stator assy SD											
13	Rotor shaft DUPLEX	code	555080220	555080230	555080240	555080250	555080260	555080270	555080280	555080290	555080300	555080310

PVC Winding Wire											
400-3-50 DOL											
Wire Code		573325818									
Wire Type		D2,2/3,2									
Tot wire need [m]		405									
400/690-3-50 SD											
Wire Code											
Wire Type											
Tot wire need [m]											
In case of order, the quantity delivered will depend from the coil currently available.											

Flat Power cable H07BB-F ACS approved											
400-3-50 DOL											
Cable code - 1m		572851268									
Section (mm2)		1X25									
Cable code , ground - 5,5 m		556990040									
Section (mm2)		1X25									
400/690-3-50 SD											
Cable code - 1m											
Section (mm2)											
Cable code , ground - 5,5m											
Section (mm2)											

Special Versions											
*3	Kit seals FPM	5KL02AAH	All models								
*5	Kit MECH D45 / Cover SIC/SIC/NBR /A304	5KL01AAD	All models								
16	Release valve FPM	549300071	All models								
17	Plug 316 SS for PT100	540500020	All models								
18	Cable gland gasket EPDM	568560290	All models, n. 2 for PT100								
	Cable gland gasket FPM	568560291	All models, n. 2 for PT100								
	Kit cable gland PT100 EPDM	5KL30AAX	All models								

(6) = WARNING. These parts replacement requires an Authorized Service.

* Recommended spare parts - Parti di ricambio consigliate
 * Pièces détachées conseillées - Empfohlene Ersatzteile

xylem

