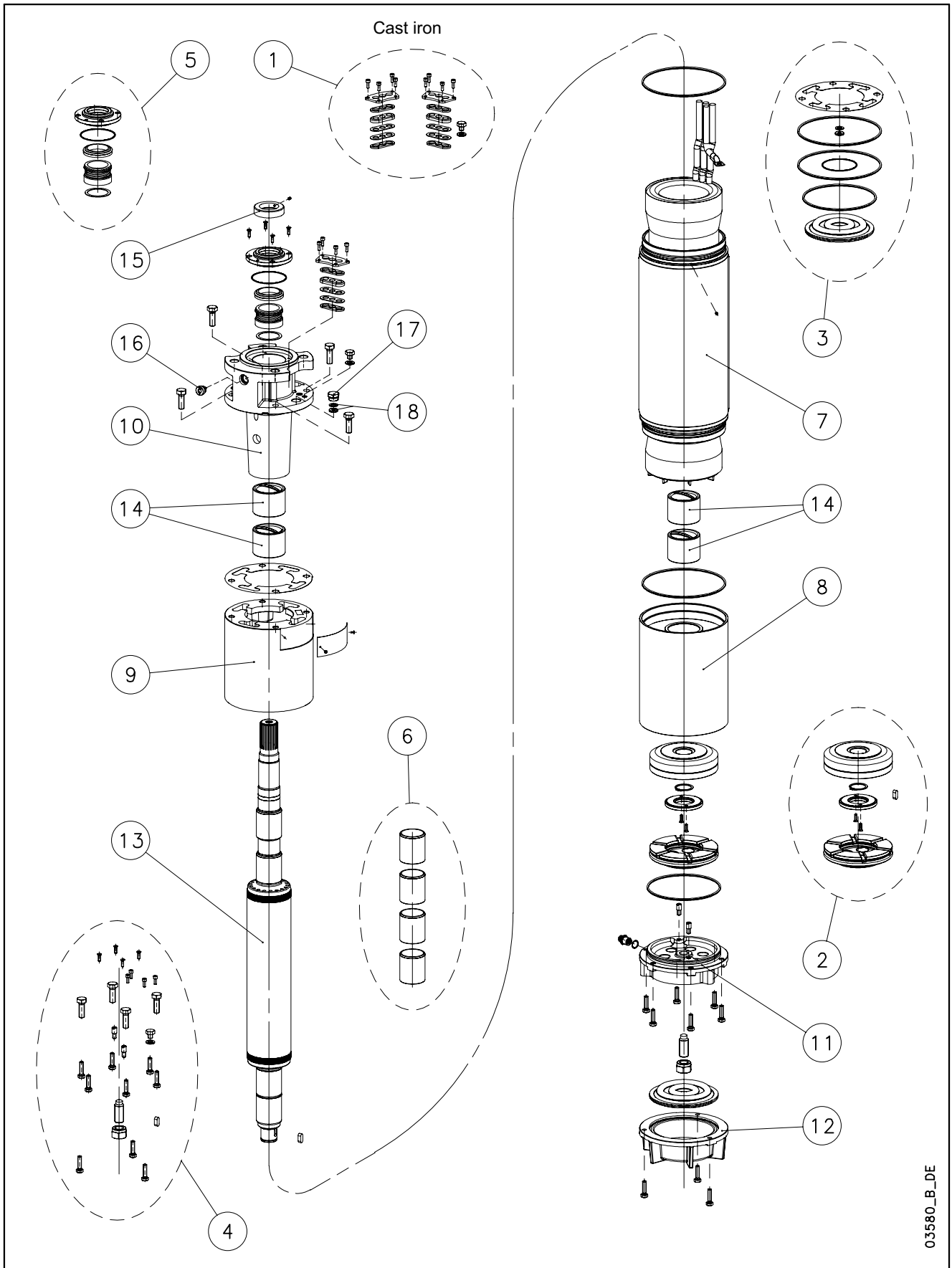


## L8W-L8W HT/A - CP8W-CP8W HT/A - CP P8A-CP P8AH



03580\_B\_DE

N.	Descrizione it	Description en	Description fr	Beschreibung de	Descripción es	Descrição pt
1	Kit pressacavi	Kit cable glands	Kit press étoupes	Kabelverschraubungensatz	Kit sujetascable	Kit pressacabos
2	Kit reggispinta completo	Thrust bearing kit, complete	Kit palier de butée complet	Drucklagerbausatz komplet	Kit cojinete de empuje completo	Kit Apoios, completo
3	Kit guarnizioni	Seals kit	Kit Garnitures	Bausatz Dichtungen	Kit juntas	Kit guarnições
4	Kit Viterie	Screws kit	Kit Visserie	Bausatz Schrauben	Kit tornillos	Kit parafusos
5	Kit tenuta/Flangia	Kit seals / Flange	Kit garnitures / Bride	Bausatz dichtungen / Flansch	Kit juntas / Brida	Kit Empanque/Flange
6	Kit boccole	Kit bearing bush	Kit roulement à douille	Bausatz buchsenlager	Kit cojinete de casquillo	Kit rolamento em bucha
7	Statore completo	Stator assy	Stator complet	Stator komplet	Estator completo	Estator complet
8	Supporto inferiore	Lower support	Support inférieur	Untere Lagerung	Soporte inferior	Suporte inferior
9	Distanziale	Spacer	Entretoise	Distanzstück	Distanciador	Distanciador
10	Supporto superiore	Upper bracket	Support supérieur	Obere Lagerung	Soporte superior	Suporte superior
11	Supporto kit reggispinta	Thrust bearing bracket kit	Support kit palier de butée	Drucklagergehäuse	Soporte kit cojinete de empuje	Suporte Kit Apoios
12	Fondello diaframma	Bottom cover diaphragm	Couvercle inférieur soufflet	Untere Abdeckung Blasebalg	Tapa inferior de sujeta	Tampa inferior do fole
13	Albero rotore	Rotor shaft	Arbre rotor	Rotorwelle	Árbol rotor	Veio rotor
14	Boccola cuscinetto sup. / inf.	Upper / lower bush bearing	Roulement à douille supérieur / inférieur	Obere /Untere- buchsenlager	Cojinete de casquillo superior-inferior	Rolamento em bucha superior-inferior
15	Parasabbia	Sand guard	Anti-sable	Sandschutz	Protección de arena	Protecção Vedante
16	Valvola sfiato	Relief valve	Soupape de Purge	Ablassventil	Valvula de purga	Válvula
17	Tappo riempimento	Filling plug	Bouchon de remplissage	Füllstoff-Stecker	Tarón de llenado	Bujão
18	Guarnizione pressacavo	Cable gland gasket	Joint de press étoupe	Kabelverschraubungen Dichtung	Junta sujetacable	O-ring pressacabo
N.	Beschrijving nl	Περιγραφή el	Açıklama tr	Kuvaus fi	Описание ru	Opis pl
1	Kabelklem set	Σετ σφικτήρων καλωδίων	Kablo bez kiti	Kaapelinpuristinsarja	Комплект каб.уплотнителей	Zestaw mocowania kabla
2	Complete druklager set	Πλήρες σετ ωπτικού ρουλεμάν	Komple ayar pulu kiti	Täydellinen painelaakerisarja	Полный комплект упорного подшипника	Kompletny zestaw łożyska ciernego
3	Kit met dichtingen	Σετ τσιμουχών	Conta kiti	Tiivistesarja	КОМПЛЕКТ прокладок	ZESTAW Uszczelek
4	Kit met schroeven	Σετ βιδών	Vida kiti	Ruuvisarja	КОМПЛЕКТ винтов	ZESTAW wkręty
5	Mechanische afdichting/Flens	Σετ ανοχών στεγανότητας/Φλάντζας	Mekanik conta / Flans	Tiivistesarja / Laippa	Комплект прокладок/фланца	Zestaw uszczelniaczy kołnieszka
6	Bus set	επάνω Σετ	Burç yatađı kiti	Holkilaakerisarja	КОМПЛЕКТ Подшипник со втулкой	Zestaw łożysko tulejowe
7	Stator compleet	Πλήρης στάτορας	Statör tamamı	Täydellinen staattori	Статор полный	Stator
8	Onderste steun	Κάτω φορέας	Alt segman braket	Alatuki	Нижняя опора	Dolny wspornik
9	Afstandsstuk	Αποστάσεων	Ara halkası	Välilevy	Распорная	Część dystansowa
10	Bovenste steun	Επάνω φορέας	Ust braket	Ylätuki	Верхняя опора	Górny wspornik
11	Steun druklager kit	Φορέας σετ ωπτικού ρουλεμάν	Bindirme yatađı kiti desteđi	Painelaakerisarjan tuki	Опора комплекта упорного подшипника	Wspornik zestawu łożyska wzduźnego
12	Bedekking onderkant de membraan	Κάλυμμα διαφράγματος	Zeminlemek kapađı Diyafram	Alaosan, kalvo	диафрагма основания крышка	Dolna pokrywa Ko nierz
13	Rotoras	Άξονας στροφείου	Rotor mili	Roottorin akseli	ось ротора	Wałek (z rotorem)
14	Bovenste /Onderste- Bus	Κορυφή / Κάτω έσφαιρου ρουλεμάν	Burç yatađı üstteki / alt	Holkilaakeri ylempi - alempi	Подшипник со втулкой верхне / низко	łożysko tulejowe wyższy / obniźać
15	Beschermkap	Προστατευτικό άμμου	Kum sızıntısı önleme	Hiekka suoja	Защита от песка	Ochrona przeciw-piaskowa
16	Ontluchtingsventiel	Βαλβίδα εξαερισμού	Tahliye valfi	Paineenrajotusventtiili	Редукционный клапан	Zawór odpowietrzający
17	Vulplug	Πώμα πλήρωσης	Şarj fişı	Täyttötulppa	Пробка заполнения	Korek zalewowy
18	Kabelklem pakking	Περιβλήμα σφικτήρα καλωδίων	Kablo bez contası	Kaapelinpuristimen tiiviste	Прокладка уплотнителей кабеля	Uszczelniaacz kabla

## L8WR/A 8" Submersible Motors

L8WR	300T405/A	370T405/A	450T405/A	520T405/A	550T405/A	600T405/A	670T405/A	750T405/A	830T405/A	930T405/A	
3Ph 400V 50Hz DOL	code 507055030	507055040	507055050	507055060	507055070	507055080	507055090	507055100	507055110	507055120	
L8WR	300T405/A	370T405/A	450T405/A	520T405/A	550T405/A	600T405/A	670T405/A	750T405/A	830T405/A	930T405/A	
3Ph 400/690V 50Hz SD	code 507055035	507055045	507055055	507055065	507055075	507055085	507055095	507055105	507055115	507055125	
	kW	30	37	45	52	55	60	67	75	83	93

1	Kit cable glands EPDM 1X6/10/16	5KL30ABV		Kits common to L8W & L8W/A						
	Kit cable glands EPDM 1X25/35	5KL30ABW	DOL models							
	Plug cable gland	568560420								
*2	Kit thrust bearing	5KL41AAF	All models							
*3	Kit seals O-Ring NBR	5KL02AAB	All models							
4	Kit screws DUPLEX	5KL40AAH	All models							
*5	Kit MECH D45/ Cover CER/CARB/NBR	5KL01AAS	All models with MECH Cover DUPLEX							
6	Kit chromate bearing bush	5KL35AAF	All models <b>For REPAIR only</b>							
8	Lower support DUPLEX	561400570	All models							
9	Upper spacer DOL/SD DUPLEX	562500370	All models							
10	Upper bracket DOL/SD DUPLEX	561401030	All models							
11	Thrust bearing bracket	561400630	All models							
	Filling valve DUPLEX	549300090	All models							
12	Bottom cover	564200200	All models							
*14	Kit carbon bearing bush	5KL35AAC	All models							
15	Sand guard DUPLEX	568600100	All models							
16	Release valve DUPLEX NBR	549300080	All models							
17	Filling plug DUPLEX	540500030	All models							
18	Cable gland gasket EPDM	568560290	All models, N. 2 for PT100							

7	Stator assy DOL	code 540640900	540640910	540640920	540640940	540640950	540640960	540640970	540640980	540640990	540641000
	Stator assy SD	code 540640905	540640915	540640925	540640945	540640955	540640965	540640975	540640985	540640995	540641005
13	Rotor shaft DUPLEX	code 555080220	555080230	555080240	555080250	555080260	555080270	555080280	555080290	555080300	555080310

PVC Winding Wire											
400-3-50 DOL											
Wire Code	573325817	573325812	573325814	573325816	573325816	573325817	573325818	573325812	573325813	573325814	
Wire Type	D2,1/3,1	D1,6/2,4	D1,8/2,6	D2,0/2,9	D2,0/2,9	D2,1/3,1	D2,2/3,2	D1,6/2,4	D1,7/2,5	D1,8/2,6	
Tot wire need [m]	395	745	685	640	575	595	605	1025	1110	1170	
400/690-3-50 SD											
Wire Code	573325817	573325812	573325814	573325816	573325816	573325817	573325818	573325812	573325813	573325814	
Wire Type	D2,1/3,1	D1,6/2,4	D1,8/2,6	D2,0/2,9	D2,0/2,9	D2,1/3,1	D2,2/3,2	D1,6/2,4	D1,7/2,5	D1,8/2,6	
Tot wire need [m]	395	745	685	640	575	595	605	1025	1110	1170	
In case of order, the quantity delivered will depend from the coil currently available.											

Flat Power cable H07BB-F ACS approved	30	37	45	52	55	60	67	75	83	93
400-3-50 DOL										
Cable code - 1m	572851264	572851264	572851266	572851266	572851266	572851266	572851268	572851268	572851270	572851270
Section (mm2)	1X10	1X10	1X16	1X16	1X16	1X16	1X25	1X25	1X35	1X35
Cable code , ground - 5,5m	556990020	556990020	556990030	556990030	556990030	556990030	556990040	556990040	556990050	556990050
Section (mm2)	1X10	1X10	1X16	1X16	1X16	1X16	1X25	1X25	1X35	1X35
400/690-3-50 SD										
Cable code - 1m	572851262	572851262	572851262	572851264	572851264	572851264	572851264	572851266	572851266	572851268
Section (mm2)	1X6	1X6	1X6	1X10	1X10	1X10	1X10	1X16	1X16	1X25
Cable code , ground - 5,5m	556990020	556990020	556990020	556990020	556990020	556990020	556990020	556990030	556990030	556990030
Section (mm2)	1X10	1X10	1X10	1X10	1X10	1X10	1X10	1X16	1X16	1X16

Special Versions			
*3	Kit seals EPDM	5KL02AAG	All models, Also x PT100
	Kit seals FPM	5KL02AAH	All models
*5	Kit seals / Cover SIC/SIC/NBR	5KL01AAT	All models
16	Release valve 316 SS FPM	549300071	All models
17	Filling plug DUPLEX PT100	540500040	All models
18	Cable gland gasket FPM	568560291	All models

(6) = WARNING. These parts replacement requires an Authorized Service.

## L8WR/A HT 8" Submersible Motors

L8WR		300T405/A	370T405/A	450T405/A	520T405/A	550T405/A	600T405/A	670T405/A	750T405/A	830T405/A
3Ph 400V 50Hz DOL HT	code				507085070		507085090		507085110	
L8WR		300T405/A	370T405/A	450T405/A	520T405/A	550T405/A	600T405/A	670T405/A	750T405/A	830T405/A
3Ph 400/690V 50Hz SD HT	code						507085095	507085105		
	kW	30	37	45	52	55	60	67	75	83

1	Kit cable glands EPDM 1X6/10/16	5KL30ABV								
	Kit cable glands EPDM 1X25/35	5KL30ABW								
	Plug cable gland	568560420								
*2	Kit thrust bearing	5KL41AAF								
*3	Kit seals O-Ring NBR	5KL02AAB								
4	Kit screws DUPLEX	5KL40AAH								
*5	Kit MECH D45/ Cover CER/CARB/NBR	5KL01AAS								
6	Kit chromate bearing bush	5KL35AAF								
8	Lower support DUPLEX	561400570								
9	Upper spacer DOL/SD DUPLEX	562500370								
10	Upper bracket DOL/SD DUPLEX	561401030								
11	Thrust bearing bracket	561400630								
	Filling valve DUPLEX	549300090								
12	Bottom cover	564200200								
*14	Kit carbon bearing bush	562590040								
15	Sand guard DUPLEX	568600100								
16	Release valve DUPLEX NBR	549300080								
17	Filling plug DUPLEX	540500030								
18	Cable gland gasket EPDM	568560290								

7	Stator assy DOL HT	code				54064095B		54064097B		54064099B
	Stator assy SD HT	code						54064097D	54064098D	
13	Rotor shaft DUPLEX	code				555080260		555080280	555080290	555080300

HT/HD Winding Wire										
		<b>400-3-50 DOL</b>								
Wire Code						573325845	573325845	573325846		573325841
Wire Type						D1,9/2,9		D2,0/3,1		D1,5/2,5
Tot wire need [m]						575		605		1110
		<b>400/690-3-50 SD</b>								
Wire Code								573325846	573325840	
Wire Type								D2,0/3,1	D1,4/2,4	
Tot wire need [m]								605	1025	
In case of order, the quantity delivered will depend from the coil currently available.										

Flat Power cable H07BB-F ACS approved										
		<b>400-3-50 DOL</b>								
Cable code - 1m						572851266		572851240		572851270
Section (mm2)						1X16		1X25		1X35
Cable code, ground - 5,5m						556990030		556990040		556990050
Section (mm2)						1X16		1X25		1X35
		<b>400/690-3-50 SD</b>								
Cable code - 1m								572851264	572851266	
Section (mm2)								1X10	1X16	
Cable code, ground - 5,5m								556990020	556990030	
Section (mm2)								1X10	1X16	

Special Versions		
*5	Kit MECH D45 / Cover SIC/SIC/NBR	5KL01AAT

(6) = WARNING. These parts replacement requires an Authorized Service.