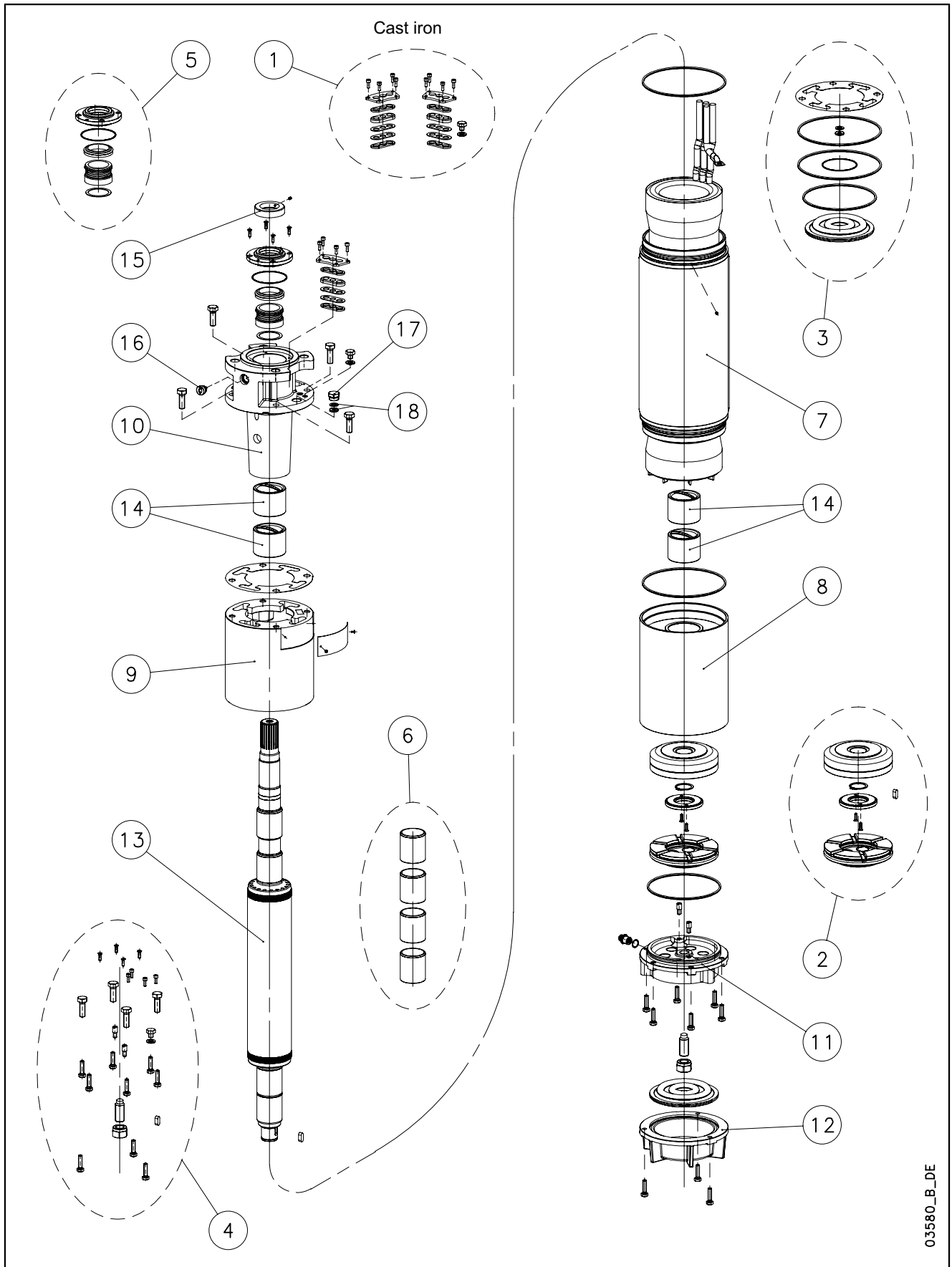


## L8W-L8W HT/A - CP8W-CP8W HT/A - CP P8A-CP P8AH



03580\_B\_DE

N.	Descrizione it	Description en	Description fr	Beschreibung de	Descripción es	Descrição pt
1	Kit pressacavi	Kit cable glands	Kit press étoupes	Kabelverschraubungensatz	Kit sujetascable	Kit pressacabos
2	Kit reggispinta completo	Thrust bearing kit, complete	Kit palier de butée complet	Drucklagerbausatz komplet	Kit cojinete de empuje completo	Kit Apoios, completo
3	Kit guarnizioni	Seals kit	Kit Garnitures	Bausatz Dichtungen	Kit juntas	Kit guarnições
4	Kit Viterie	Screws kit	Kit Visserie	Bausatz Schrauben	Kit tornillos	Kit parafusos
5	Kit tenuta/Flangia	Kit seals / Flange	Kit garnitures / Bride	Bausatz dichtungen / Flansch	Kit juntas / Brida	Kit Empanque/Flange
6	Kit boccole	Kit bearing bush	Kit roulement à douille	Bausatz buchsenlager	Kit cojinete de casquillo	Kit rolamento em bucha
7	Statore completo	Stator assy	Stator complet	Stator komplet	Estator completo	Estator complet
8	Supporto inferiore	Lower support	Support inférieur	Untere Lagerung	Soporte inferior	Suporte inferior
9	Distanziale	Spacer	Entretoise	Distanzstück	Distanciador	Distanciador
10	Supporto superiore	Upper bracket	Support supérieur	Obere Lagerung	Soporte superior	Suporte superior
11	Supporto kit reggispinta	Thrust bearing bracket kit	Support kit palier de butée	Drucklagergehäuse	Soporte kit cojinete de empuje	Suporte Kit Apoios
12	Fondello diaframma	Bottom cover diaphragm	Couvercle inférieur soufflet	Untere Abdeckung Blasebalg	Tapa inferior de sujeta	Tampa inferior do fole
13	Albero rotore	Rotor shaft	Arbre rotor	Rotorwelle	Árbol rotor	Veio rotor
14	Boccola cuscinetto sup. / inf.	Upper / lower bush bearing	Roulement à douille supérieur / inférieur	Obere /Untere- buchsenlager	Cojinete de casquillo superior-inferior	Rolamento em bucha superior-inferior
15	Parasabbia	Sand guard	Anti-sable	Sandschutz	Protección de arena	Protecção Vedante
16	Valvola sfiato	Relief valve	Soupape de Purge	Ablassventil	Valvula de purga	Válvula
17	Tappo riempimento	Filling plug	Bouchon de remplissage	Füllstoff-Stecker	Tarón de llenado	Bujão
18	Guarnizione pressacavo	Cable gland gasket	Joint de press étoupe	Kabelverschraubungen Dichtung	Junta sujetacable	O-ring pressacabo
N.	Beschrijving nl	Περιγραφή el	Açıklama tr	Kuvaus fi	Описание ru	Opis pl
1	Kabelklem set	Σετ σφικτήρων καλωδίων	Kablo bez kiti	Kaapelinpuristinsarja	Комплект каб.уплотнителей	Zestaw mocowania kabla
2	Complete drucklager set	Πλήρες σετ ωπτικού ρουλεμάν	Komple ayar pulu kiti	Täydellinen painelaakerisarja	Полный комплект упорного подшипника	Kompletny zestaw łożyska ciernego
3	Kit met dichtingen	Σετ τσιμουχών	Conta kiti	Tiivistesarja	КОМПЛЕКТ прокладок	ZESTAW Uszczelek
4	Kit met schroeven	Σετ βιδών	Vida kiti	Ruuvisarja	КОМПЛЕКТ винтов	ZESTAW wkręty
5	Mechanische afdichting/Flens	Σετ ανοχών στεγανότητας/Φλάντζας	Mekanik conta / Flans	Tiivistesarja / Laippa	Комплект прокладок/фланца	Zestaw uszczelniaczy kołnieszka
6	Bus set	επάνω Σετ	Burç yatađı kiti	Holkilaakerisarja	КОМПЛЕКТ Подшипник со втулкой	Zestaw łożysko tulejowe
7	Stator compleet	Πλήρης στάτορας	Statör tamamı	Täydellinen staattori	Статор полный	Stator
8	Onderste steun	Κάτω φορέας	Alt segman braket	Alatuki	Нижняя опора	Dolny wspornik
9	Afstandsstuk	Αποστάσεων	Ara halkası	Välilevy	Распорная	Część dystansowa
10	Bovenste steun	Επάνω φορέας	Ust braket	Ylätuki	Верхняя опора	Górny wspornik
11	Steun drucklager kit	Φορέας σετ ωπτικού ρουλεμάν	Bindirme yatađı kiti desteđi	Painelaakerisarjan tuki	Опора комплекта упорного подшипника	Wspornik zestawu łożyska wzduźnego
12	Bedekking onderkant de membraan	Κάλυμμα διαφράγματος	Zeminlemek kapađı Diyafram	Alaosan, kalvo	диафрагма основания крышка	Dolna pokrywa Ko nierz
13	Rotoras	Άξονας στροφείου	Rotor mili	Roottorin akseli	ось ротора	Wałek (z rotorem)
14	Bovenste /Onderste- Bus	Κορυφή / Κάτω έσφαιρου ρουλεμάν	Burç yatađı üstteki / alt	Holkilaakeri ylempi - alempi	Подшипник со втулкой верхне / низко	łożysko tulejowe wyższy / obniźać
15	Beschermkap	Προστατευτικό άμμου	Kum sizintisi önleme	Hiekka suoja	Защита от песка	Ochrona przeciw-piaskowa
16	Ontluchtingsventiel	Βαλβίδα εξαερισμού	Tahliye valfi	Paineenrajotusventtiili	Редукционный клапан	Zawór odpowietrzający
17	Vulplug	Πώμα πλήρωσης	Şarj fişı	Täyttötulppa	Пробка заполнения	Korek zalewowy
18	Kabelklem pakking	Περιβλήμα σφικτήρα καλωδίων	Kablo bez contası	Kaapelinpuristimen tiiviste	Прокладка уплотнителей кабеля	Uszczelniaacz kabla

## L8WR 8" Submersible Motors

L8WR		300T405	370T405	450T405	520T405	550T405	600T405	670T405	750T405	830T405	930T405
3Ph 400V 50Hz DOL	code	507005030	507005040	507005050	507005060	507005070	507005080	507005090	507005100	507005110	507005120
L8WR		300T405	370T405	450T405	520T405	550T405	600T405	670T405	750T405	830T405	930T405
3Ph 400/690V 50Hz SD	code	507005035	507005045	507005055	507005065	507005075	507005085	507005095	507005105	507005115	507005125
	kW	30	37	45	52	55	60	67	75	83	93

1	Kit cable glands EPDM 1X6/10/16	5KL30ABV									
	Kit cable glands EPDM 1X25/35	5KL30ABW									
			DOL models 67-93 kW								
			Kits common to L8W & L8W/A								
*2	Kit thrust bearing	5KL41AAF	All models								
*3	Kit seals O-Ring NBR	5KL02AAB	All models								
4	Kit screws DUPLEX	5KL40AAH	All models								
*5	Kit MECH D45/ Cover CER/CARB/NBR	5KL01AAS	All models with MECH Cover DUPLEX								
6	Kit chromate bearing bush	5KL35AAF	All models <b>For REPAIR only</b>								
8	Lower support DUPLEX	561400570	All models								
9	Spacer DOL	562500250	All models								
	Spacer SD	562500260	All models								
10	Upper bracket DOL/SD	561400600	All models								
11	Thrust bearing bracket	561400630	All models								
	Filling valve DUPLEX	549300090	All models								
12	Bottom cover	564200200	All models								
*14	Kit carbon bearing bush	5KL35AAC	All models								
15	Sand guard DUPLEX	568600100	All models								
16	Release valve DUPLEX NBR	549300080	All models								
17	Filling plug DUPLEX	540500030	All models								
18	Cable gland gasket EPDM	568560290	All models, N. 2 for PT100								

7	Stator assy DOL	code	540640900	540640910	540640920	540640940	540640950	540640960	540640970	540640980	540640990	540641000
	Stator assy SD	code	540640905	540640915	540640925	540640945	540640955	540640965	540640975	540640985	540640995	540641005
13	Rotor shaft DUPLEX	code	555080220	555080230	555080240	555080250	555080260	555080270	555080280	555080290	555080300	555080310

PVC Winding Wire											
		400-3-50 DOL									
Wire Code		573325817	573325812	573325814	573325816	573325816	573325817	573325818	573325812	573325813	573325814
Wire Type		D2,1/3,1	D1,6/2,4	D1,8/2,6	D2,0/2,9	D2,0/2,9	D2,1/3,1	D2,2/3,2	D1,6/2,4	D1,7/2,5	D1,8/2,6
Tot wire need [m]		395	745	685	640	575	595	605	1025	1110	1170
		400/690-3-50 SD									
Wire Code		573325817	573325812	573325814	573325816	573325816	573325817	573325818	573325812	573325813	573325814
Wire Type		D2,1/3,1	D1,6/2,4	D1,8/2,6	D2,0/2,9	D2,0/2,9	D2,1/3,1	D2,2/3,2	D1,6/2,4	D1,7/2,5	D1,8/2,6
Tot wire need [m]		395	745	685	640	575	595	605	1025	1110	1170
In case of order, the quantity delivered will depend from the coil currently available.											

Flat Power cable H07BB-F ACS approved	30	37	45	52	55	60	67	75	83	93
	400-3-50 DOL									
Cable code - 1m	572851264	572851264	572851266	572851266	572851266	572851266	572851268	572851268	572851270	572851270
Section (mm2)	1X10	1X10	1X16	1X16	1X16	1X16	1X25	1X25	1X35	1X35
Cable code , ground - 5,5m	556990020	556990020	556990030	556990030	556990030	556990030	556990040	556990040	556990050	556990050
Section (mm2)	1X10	1X10	1X16	1X16	1X16	1X16	1X25	1X25	1X35	1X35
	400/690-3-50 SD									
Cable code - 1m	572851262	572851262	572851262	572851264	572851264	572851264	572851264	572851266	572851266	572851268
Section (mm2)	1X6	1X6	1X6	1X10	1X10	1X10	1X10	1X16	1X16	1X25
Cable code , ground - 5,5m	556990020	556990020	556990020	556990020	556990020	556990020	556990020	556990030	556990030	556990030
Section (mm2)	1X10	1X10	1X10	1X10	1X10	1X10	1X10	1X16	1X16	1X16

Special Versions			
*3	Kit seals EPDM	5KL02AAG	All models, Also x PT100
	Kit seals FPM	5KL02AAH	All models
*5	Kit seals / Cover SIC/SIC/NBR	5KL01AAT	All models
16	Release valve 316 SS FPM	549300071	All models
17	Filling plug DUPLEX PT100	540500040	All models
18	Cable gland gasket FPM	568560291	All models

(6) = WARNING. These parts replacement requires an Authorized Service.

\* Recommended spare parts - Parti di ricambio consigliate  
\* Pièces détachées conseillées - Empfohlene Ersatzteile

# xylem

