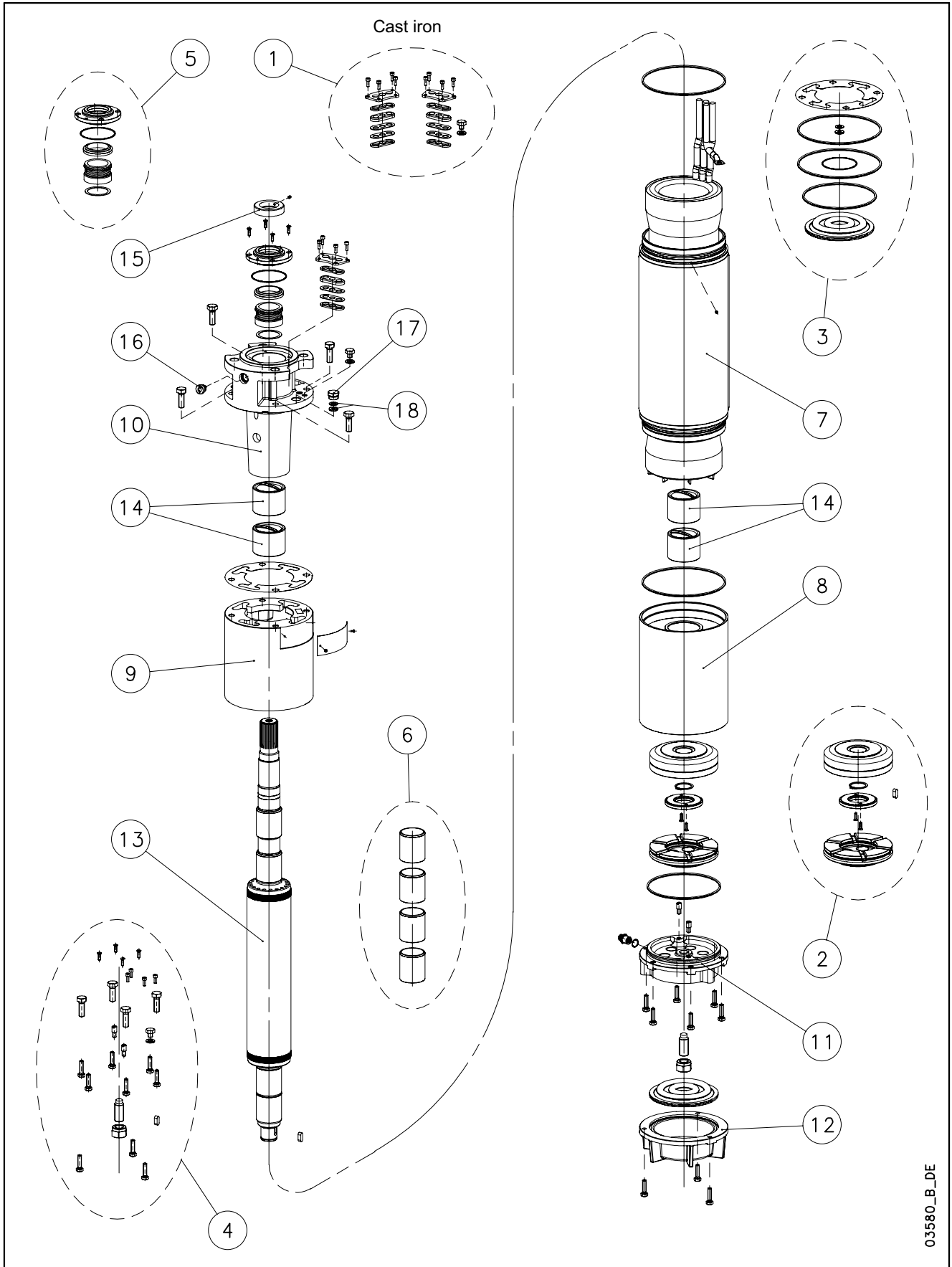


## L8W-L8W HT/A - CP8W-CP8W HT/A - CP P8A-CP P8AH



03580\_B\_DE

N.	Descrizione it	Description en	Description fr	Beschreibung de	Descripción es	Descrição pt
1	Kit pressacavi	Kit cable glands	Kit press étoupes	Kabelverschraubungensatz	Kit sujetascable	Kit pressacabos
2	Kit reggispinta completo	Thrust bearing kit, complete	Kit palier de butée complet	Drucklagerbausatz komplet	Kit cojinete de empuje completo	Kit Apoios, completo
3	Kit guarnizioni	Seals kit	Kit Garnitures	Bausatz Dichtungen	Kit juntas	Kit guarnições
4	Kit Viterie	Screws kit	Kit Visserie	Bausatz Schrauben	Kit tornillos	Kit parafusos
5	Kit tenuta/Flangia	Kit seals / Flange	Kit garnitures / Bride	Bausatz dichtungen / Flansch	Kit juntas / Brida	Kit Empanque/Flange
6	Kit boccole	Kit bearing bush	Kit roulement à douille	Bausatz buchsenlager	Kit cojinete de casquillo	Kit rolamento em bucha
7	Statore completo	Stator assy	Stator complet	Stator komplet	Estator completo	Estator complet
8	Supporto inferiore	Lower support	Support inférieur	Untere Lagerung	Soporte inferior	Suporte inferior
9	Distanziale	Spacer	Entretoise	Distanzstück	Distanciador	Distanciador
10	Supporto superiore	Upper bracket	Support supérieur	Obere Lagerung	Soporte superior	Suporte superior
11	Supporto kit reggispinta	Thrust bearing bracket kit	Support kit palier de butée	Drucklagergehäuse	Soporte kit cojinete de empuje	Suporte Kit Apoios
12	Fondello diaframma	Bottom cover diaphragm	Couvercle inférieur soufflet	Untere Abdeckung Blasebalg	Tapa inferior de sujeta	Tampa inferior do fole
13	Albero rotore	Rotor shaft	Arbre rotor	Rotorwelle	Árbol rotor	Veio rotor
14	Boccola cuscinetto sup. / inf.	Upper / lower bush bearing	Roulement à douille supérieur / inférieur	Obere /Untere- buchsenlager	Cojinete de casquillo superior-inferior	Rolamento em bucha superior-inferior
15	Parasabbia	Sand guard	Anti-sable	Sandschutz	Protección de arena	Protecção Vedante
16	Valvola sfiato	Relief valve	Soupape de Purge	Ablassventil	Valvula de purga	Válvula
17	Tappo riempimento	Filling plug	Bouchon de remplissage	Füllstoff-Stecker	Tarón de llenado	Bujão
18	Guarnizione pressacavo	Cable gland gasket	Joint de press étoupe	Kabelverschraubungen Dichtung	Junta sujetacable	O-ring pressacabo
N.	Beschrijving nl	Περιγραφή el	Açıklama tr	Kuvaus fi	Описание ru	Opis pl
1	Kabelklem set	Σετ σφικτήρων καλωδίων	Kablo bez kiti	Kaapelinpuristinsarja	Комплект каб.уплотнителей	Zestaw mocowania kabla
2	Complete druklager set	Πλήρες σετ ωπτικού ρουλεμάν	Komple ayar pulu kiti	Täydellinen painelaakerisarja	Полный комплект упорного подшипника	Kompletny zestaw łożyska ciernego
3	Kit met dichtingen	Σετ τσιμουχών	Conta kiti	Tiivistesarja	КОМПЛЕКТ прокладок	ZESTAW Uszczelek
4	Kit met schroeven	Σετ βιδών	Vida kiti	Ruuvisarja	КОМПЛЕКТ винтов	ZESTAW wkręty
5	Mechanische afdichting/Flens	Σετ ανοχών στεγανότητας/Φλάντζας	Mekanik conta / Flans	Tiivistesarja / Laippa	Комплект прокладок/фланца	Zestaw uszczelniaczy kołnieszka
6	Bus set	επάνω Σετ	Burç yatağı kiti	Holkilaakerisarja	КОМПЛЕКТ Подшипник со втулкой	Zestaw łożysko tulejowe
7	Stator compleet	Πλήρης στάτορας	Statör tamamı	Täydellinen staattori	Статор полный	Stator
8	Onderste steun	Κάτω φορέας	Alt segman braket	Alatuki	Нижняя опора	Dolny wspornik
9	Afstandsstuk	Αποστάσεων	Ara halkası	Välilevy	Распорная	Część dystansowa
10	Bovenste steun	Επάνω φορέας	Ust braket	Ylätuki	Верхняя опора	Górny wspornik
11	Steun druklager kit	Φορέας σετ ωπτικού ρουλεμάν	Bindirme yatağı kiti desteği	Painelaakerisarjan tuki	Опора комплекта упорного подшипника	Wspornik zestawu łożyska wzdużnego
12	Bedekking onderkant de membraan	Κάλυμμα διαφράγματος	Zeminlemek kapağı Diyafram	Alaosan, kalvo	диафрагма основания крышка	Dolna pokrywa Ko nierz
13	Rotoras	Άξονας στροφείου	Rotor mili	Roottorin akseli	ось ротора	Wałek (z rotorem)
14	Bovenste /Onderste- Bus	Κορυφή / Κάτω έσφαιρου ρουλεμάν	Burç yatağı üstteki / alt	Holkilaakeri ylempi - alempi	Подшипник со втулкой верхне / низко	łożysko tulejowe wyższy / obniżać
15	Beschermkap	Προστατευτικό άμμου	Kum sızıntısı önleme	Hiekka suoja	Защита от песка	Ochrona przeciw-piaskowa
16	Ontluchtingsventiel	Βαλβίδα εξαερισμού	Tahliye valfi	Paineenrajotusventtiili	Редукционный клапан	Zawór odpowietrzający
17	Vulplug	Πώμα πλήρωσης	Şarj fişi	Täyttötulppa	Пробка заполнения	Korek zalewowy
18	Kabelklem pakking	Περιβλημα σφικτήρα καλωδίων	Kablo bez contası	Kaapelinpuristimen tiiviste	Прокладка уплотнителей кабеля	Uszczelniaacz kabla

## L8WN/A 8" Submersible Motors

<b>L8WN</b> 3Ph 400V 50Hz DOL	code	300T405/A	370T405/A	450T405/A	520T405/A	550T405/A	600T405/A	670T405/A	750T405/A	830T405/A	930T405/A
<b>L8WN</b> 3Ph 400/690V 50Hz SD	code	300T405/A	370T405/A	450T405/A	520T405/A	550T405/A	600T405/A	670T405/A	750T405/A	830T405/A	930T405/A
	kW	30	37	45	52	55	60	67	75	83	93

1	Kit cable glands EPDM 1X6/10/16	5KL30ABT									
	Kit cable glands EPDM 1X25/35	5KL30ABU									
	Plug cable gland EPDM	568560420									
*2	Kit thrust bearing	5KL41AAE	All models								
*3	Kit seals O-Ring NBR	5KL02AAB	All models								
4	Kit screws 316 SS	5KL40AAG	All models								
*5	Kit MECH D45/ Cover CER/CARB/FPM	5KL01AAC	All models with MECH A316								
6	Kit chromate bearing bush	5KL35AAF	All models For REPAIR only								
8	Lower support 316 SS	561400560	All models								
9	Spacer DOL /SD	562500360	All models								
10	Upper bracket DOL /SD	561401020	All models								
11	Thrust bearing bracket	561400620	All models								
	Filling valve EPDM	549300040	All models								
12	Bottom cover	564200190	All models								
*14	Kit carbon bearing bush	5KL35AAC	All models								
15	Sand guard 316 SS	568600040	All models								
16	Release valve	549300070	All models								
17	Filling plug 316 SS	540500010	All models								
18	Cable gland gasket EPDM	568560290	All models, N. 2 for PT100								

7	Stator assy DOL	code	540640520	540640530	540640540	540640550	540640560	540640570	540640580	540640590	540640600	540640610
	Stator assy SD	code	540640525	540640535	540640545	540640555	540640565	540640575	540640585	540640595	540640605	540640615
13	Rotor shaft DUPLEX	code	555080220	555080230	555080240	555080250	555080260	555080270	555080280	555080290	555080300	555080310

<b>PVC Winding Wire</b>											
400-3-50 DOL											
Wire Code	573325817	573325812	573325814	573325816	573325816	573325817	573325818	573325812	573325813	573325814	
Wire Type	D2,1/3,1	D1,6/2,4	D1,8/2,6	D2,0/2,9	D2,0/2,9	D2,1/3,1	D2,2/3,2	D1,6/2,4	D1,7/2,5	D1,8/2,6	
Tot wire need [m]	395	745	685	640	575	595	605	1025	1110	1170	
400/690-3-50 SD											
Wire Code	573325817	573325812	573325814	573325816	573325816	573325817	573325818	573325812	573325813	573325814	
Wire Type	D2,1/3,1	D1,6/2,4	D1,8/2,6	D2,0/2,9	D2,0/2,9	D2,1/3,1	D2,2/3,2	D1,6/2,4	D1,7/2,5	D1,8/2,6	
Tot wire need [m]	395	745	685	640	575	595	605	1025	1110	1170	
In case of order, the quantity delivered will depend from the coil currently available.											

<b>Flat Power cable H07BB-F ACS approved</b>											
400-3-50 DOL											
Cable code - 1m	572851264	572851264	572851266	572851266	572851266	572851266	572851268	572851268	572851270	572851270	
Section (mm2)	1X10	1X10	1X16	1X16	1X16	1X16	1X25	1X25	1X35	1X35	
Cable code , ground - 5,5m	556990020	556990020	556990030	556990030	556990030	556990030	556990040	556990040	556990050	556990050	
Section (mm2)	1X10	1X10	1X16	1X16	1X16	1X16	1X25	1X25	1X35	1X35	
400/690-3-50 SD											
Cable code - 1m	572851262	572851262	572851262	572851264	572851264	572851264	572851264	572851266	572851266	572851266	
Section (mm2)	1X6	1X6	1X6	1X10	1X10	1X10	1X10	1X16	1X16	1X16	
Cable code , ground - 5,5m	556990020	556990020	556990020	556990020	556990020	556990020	556990020	556990030	556990030	556990030	
Section (mm2)	1X10	1X10	1X10	1X10	1X10	1X10	1X10	1X16	1X16	1X16	

<b>Special Versions</b>			
*3	Kit seals O-Ring FPM	5KL02AAH	All models
*5	Kit MECH D45/ Cover SIC/SIC/NBR	5KL01AAD	All models
16	Release valve 316 SS FPM	549300071	All models
17	Plug 316 SS for PT100	540500020	All models
18	Cable gland gasket FPM	568560291	All models

(6) = WARNING. These parts replacement requires an Authorized Service.

## L8WN/A HT 8" Submersible Motors

<b>L8WN</b> 3Ph 400V 50Hz <b>DOL</b> HT	code	300T405/A	370T405/A	450T405/A	520T405/A	550T405/A	600T405/A	670T405/A	750T405/A	830T405/A
<b>L8WN</b> 3Ph 400/690V 50Hz <b>SD</b> HT	code	300T405/A	370T405/A	450T405/A	520T405/A	550T405/A	600T405/A	670T405/A	750T405/A	830T405/A
	kW	30	37	45	52	55	60	67	75	83

1	Kit cable glands EPDM 1X6/10/16	5KL30ABT	Kits common to L8W & L8W/A							
	Kit cable glands EPDM 1X25/35	5KL30ABU	DOL models 60-83 kW							
	Plug cable gland EPDM	568560420								
*2	Kit thrust bearing	5KL41AAE	All models							
*3	Kit seals O-Ring NBR	5KL02AAB	All models							
4	Kit screws 316 SS	5KL40AAG	All models							
*5	Kit MECH D45 / Cover CER/CARB/FPM	5KL01AAC	All models with MECH A316							
6	Kit chromate bearing bush	5KL35AAF	All models For REPAIR only							
8	Lower support 316 SS	561400560	All models							
9	Spacer DOL/SD	562500360	All models							
10	Upper bracket DOL/SD	561401020	All models							
11	Thrust bearing bracket	561400620	All models							
	Filling valve EPDM	549300040	All models							
12	Bottom cover	564200190	All models							
*14	Kit carbon bearing bush	5KL35AAC	All models							
15	Sand guard	568600040	All models							
16	Release valve 316 SS NBR	549300070	All models							
17	Filling plug 316 SS	540500010	All models							
18	Cable gland gasket EPDM	568560290	All models							

7	Stator assy DOL HT	code	54064053B	54064054B	54064055B	54064056B	54064057B	54064058B		54064060B
	Stator assy SD HT		54064053D	54064054D	54064055D	54064056D	54064057D	54064058D	54064059D	54064060D
13	Rotor shaft DUPLEX	code	555080230	555080240	555080250	555080260	555080270	555080280	555080290	555080300
										555080310

HT/HD Winding Wire										
<b>400-3-50 DOL</b>										
Wire Code	573325340	573325342	573325845	573325345	573325846	573325346			573325841	
Wire Type	1,4/2,4	D1,6/2,6	D1,9/2,9	D1,9/2,9	D2,0/3,1	D2,0/3,1			D1,5/2,5	
Tot wire need [m]	745	685	640	575	600	605			1130	
<b>400/690-3-50 SD</b>										
Wire Code	573325840	573325842	573325845	573325345	573325846	573325846	573325840	573325841	573325842	
Wire Type	D1,4/2,4	D1,6/2,6	D1,9/2,9	D1,9/2,9	D2,0/3,1	D2,0/3,1	D1,4/2,4	D1,5/2,5	D1,6/2,6	
Tot wire need [m]	745	685	640	575	595	605	1025	1110	1120	
In case of order, the quantity delivered will depend from the coil currently available.										

Flat Power cable H07BB-F ACS approved										
<b>400-3-50 DOL</b>										
Cable code - 1m	572851264	572851266	572851266	572851266	572851266	572851268			572851270	
Section (mm2)	1X10	1X16	1X16	1X16	1X16	1X25			1X35	
Cable code, ground - 5,5m	556990020	556990030	556990030	556990030	556990030	556990040			556990050	
Section (mm2)	1X10	1X16	1X16	1X16	1X16	1X25			1X35	
<b>400/690-3-50 SD</b>										
Cable code - 1m	572851262	572851262	572851264	572851264	572851264	572851264	572851266	572851266	572851266	
Section (mm2)	1X6	1X6	1X10	1X10	1X10	1X10	1X16	1X16	1X16	
Cable code, ground - 5,5m	556990020	556990020	556990020	556990020	556990020	556990020	556990030	556990030	556990030	
Section (mm2)	1X10	1X10	1X10	1X10	1X10	1X10	1X16	1X16	1X16	

Special Versions		
*5	Kit MECH D45 / Cover SIC/SIC/NBR	5KL01AAD

(6) = WARNING. These parts replacement requires an Authorized Service.

\* Recommended spare parts - Parti di ricambio consigliate  
 \* Pièces détachées conseillées - Empfohlene Ersatzteile