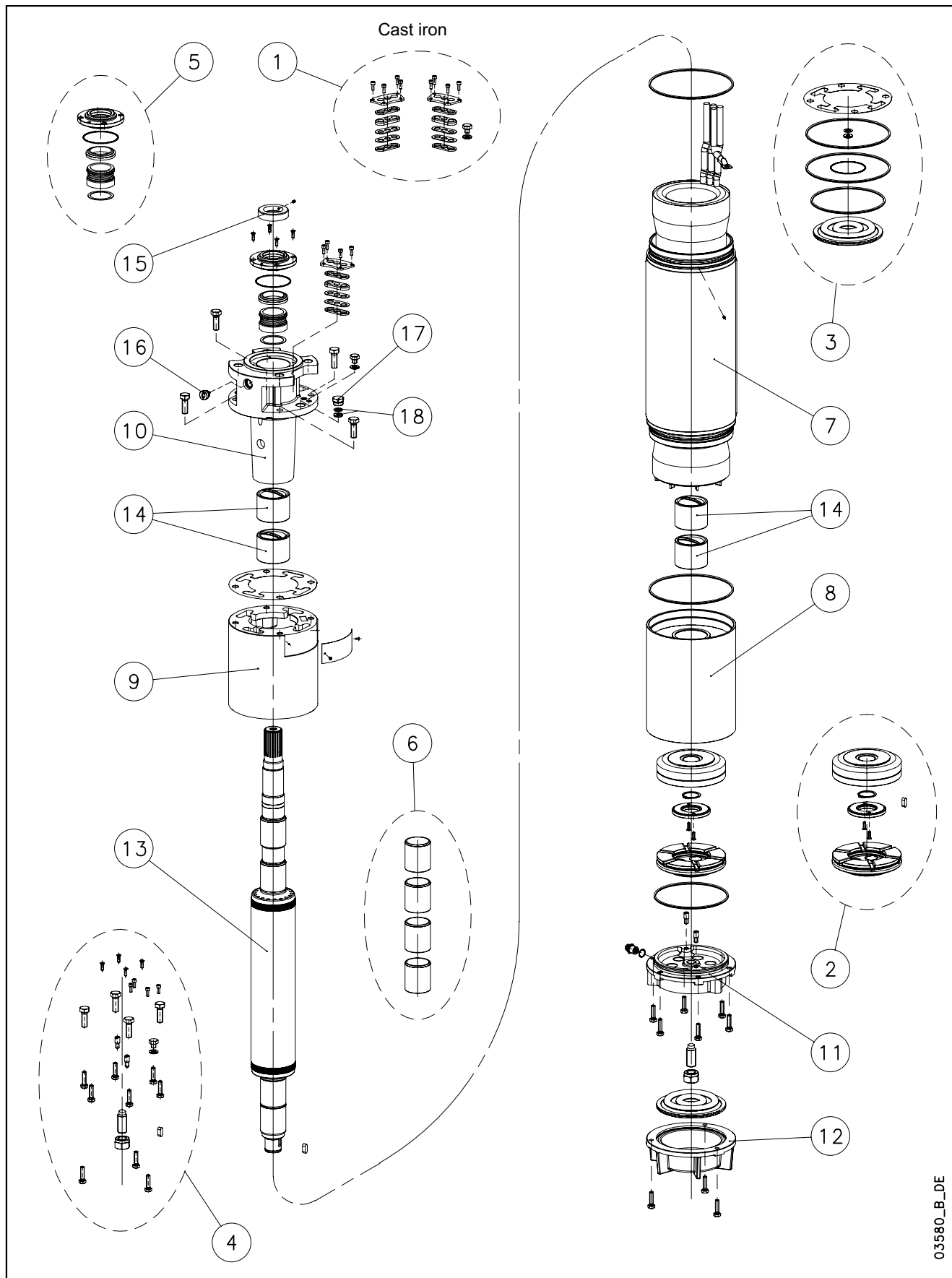


## L8W-L8W HT/A - CP8W-CP8W HT/A - CP P8A-CP P8AH



03580\_B\_DE

N.	Descrizione it	Description en	Description fr	Beschreibung de	Descripción es	Descrição pt
1	Kit pressacavi	Kit cable glands	Kit press étoupes	Kabelverschraubungensatz	Kit sujetascable	Kit pressacabos
2	Kit reggispinta completo	Thrust bearing kit, complete	Kit palier de butée complet	Drucklagerbausatz komplet	Kit cojinete de empuje completo	Kit Apoios, completo
3	Kit guarnizioni	Seals kit	Kit Garnitures	Bausatz Dichtungen	Kit juntas	Kit guarnições
4	Kit Viterie	Screws kit	Kit Visserie	Bausatz Schrauben	Kit tornillos	Kit parafusos
5	Kit tenuta/Flangia	Kit seals / Flange	Kit garnitures / Bride	Bausatz dichtungen / Flansch	Kit juntas / Brida	Kit Empanque/Flange
6	Kit boccole	Kit bearing bush	Kit roulement à douille	Bausatz buchsenlager	Kit cojinete de casquillo	Kit rolamento em bucha
7	Statore completo	Stator assy	Stator complet	Stator komplet	Estator completo	Estator complet
8	Supporto inferiore	Lower support	Support inférieur	Untere Lagerung	Soporte inferior	Suporte inferior
9	Distanziale	Spacer	Entretoise	Distanzstück	Distanciador	Distanciador
10	Supporto superiore	Upper bracket	Support supérieur	Obere Lagerung	Soporte superior	Suporte superior
11	Supporto kit reggispinta	Thrust bearing bracket kit	Support kit palier de butée	Drucklagergehäuse	Soporte kit cojinete de empuje	Suporte Kit Apoios
12	Fondello diaframma	Bottom cover diaphragm	Couvercle inférieur soufflet	Untere Abdeckung Blasebalg	Tapa inferior de sujeta	Tampa inferior do fole
13	Albero rotore	Rotor shaft	Arbre rotor	Rotorwelle	Árbol rotor	Veio rotor
14	Boccola cuscinetto sup. / inf.	Upper / lower bush bearing	Roulement à douille supérieur / inférieur	Obere /Untere- buchsenlager	Cojinete de casquillo superior-inferior	Rolamento em bucha superior-inferior
15	Parasabbia	Sand guard	Anti-sable	Sandschutz	Protección de arena	Protecção Vedante
16	Valvola sfiato	Relief valve	Soupape de Purge	Ablassventil	Valvula de purga	Válvula
17	Tappo riempimento	Filling plug	Bouchon de remplissage	Füllstoff-Stecker	Tapón de llenado	Bujão
18	Guarnizione pressacavo	Cable gland gasket	Joint de press étoupe	Kabelverschraubungen Dichtung	Junta sujetacable	O-ring pressacabo
N.	Beschrijving nl	Περιγραφή el	Açıklama tr	Kuvas fi	Описание ru	Opis pl
1	Kabelklem set	Σετ σφικτήρων καλωδίων	Kablo bez kiti	Kaapelinpuristinsarja	Комплект каб.уплотнителей	Zestaw mocowania kabla
2	Complete druklager set	Πλήρες σετ ωπτικού ρουλεμάν	Komple ayar pulu kiti	Täydellinen painelaakerisarja	Полный комплект упорного подшипника	Kompletny zestaw łożyska ciernego
3	Kit met dichtingen	Σετ τσιμουχών	Conta kiti	Tiivistesarja	КОМПЛЕКТ прокладок	ZESTAW Uszczelek
4	Kit met schroeven	Σετ βιδών	Vida kiti	Ruuvisarja	КОМПЛЕКТ винтов	ZESTAW wkręty
5	Mechanische afdichting/Flens	Σετ ανοχών στεγανότητας/Φλάντζας	Mekanik conta / Flans	Tiivistesarja / Laippa	Комплект прокладок/фланца	Zestaw uszczelniaczy kołnieszka
6	Bus set	επάνω Σετ	Burç yatađı kiti	Holkilaakerisarja	КОМПЛЕКТ Подшипник со втулкой	Zestaw łożysko tulejowe
7	Stator compleet	Πλήρης στάτορας	Statör tamamı	Täydellinen staattori	Статор полный	Stator
8	Onderste steun	Κάτω φορέας	Alt segman braket	Alatuki	Нижняя опора	Dolny wspornik
9	Afstandsstuk	Αποστάσεων	Ara halkası	Välilevy	Распорная	Część dystansowa
10	Bovenste steun	Επάνω φορέας	Ust braket	Ylätuki	Верхняя опора	Górny wspornik
11	Steun druklager kit	Φορέας σετ ωπτικού ρουλεμάν	Bindirme yatađı kiti desteđi	Painelaakerisarjan tuki	Опора комплекта упорного подшипника	Wspornik zestawu łożyska wzdużnego
12	Bedekking onderkant de membraan	Κάλυμμα διαφράγματος	Zeminlemek kapađı Diyafram	Alaosan, kalvo	диафрагма основания крышка	Dolna pokrywa Ko nierz
13	Rotoras	Άξονας στροφείου	Rotor mili	Roottorin akseli	ось ротора	Wałek (z rotorem)
14	Bovenste /Onderste- Bus	Κορυφή / Κάτω έσφαιρου ρουλεμάν	Burç yatađı üstteki / alt	Holkilaakeri ylempi - alempi	Подшипник со втулкой верхне / низко	łożysko tulejowe wyższy / obniżać
15	Beschermkap	Προστατευτικό άμμου	Kum sızıntısı önleme	Hiekka suoja	Защита от песка	Ochrona przeciw-piaskowa
16	Ontluchtingsventiel	Βαλβίδα εξαερισμού	Tahliye valfi	Paineenrajotusventtiili	Редукционный клапан	Zawór odpowietrzający
17	Vulplug	Πώμα πλήρωσης	Şarj fişı	Täyttötulppa	Пробка заполнения	Korek zalewowy
18	Kabelklem pakking	Περιβλήμα σφικτήρα καλωδίων	Kablo bez contası	Kaapelinpuristimen tiiviste	Прокладка уплотнителей кабеля	Uszczelniaacz kabla

## CP8W 8" Submersible Motors

CP8W	300T405	370T405	450T405	520T405	550T405	600T405	670T405	750T405	830T405	930T405
3Ph 400V 50Hz DOL	code 507013030	507013040	507013050	507013060	507013070	507013080	507013090	507013100	507013110	507013120
CP8W	300T405	370T405	450T405	520T405	550T405	600T405	670T405	750T405	830T405	930T405
3Ph 400/690V 50Hz SD	code 507013035	507013045	507013055	507013065	507013075	507013085	507013095	507013105	507013115	507013125
kW	30	37	45	52	55	60	67	75	83	93

1	Kit cable glands EPDM 1X6/10/16	5KL30ABR	Kits common to CP8W & CP8W/A							
	Kit cable glands EPDM 1X25/35	5KL30ABS	DOL models 67-93 kW							
*2	Kit thrust bearing	5KL41AAA	All models							
*3	Kit seals NBR	5KL02AAB	All models							
4	Kit screws 304 SS	5KL40AAB	All models							
*5	Kit MECH D45 / Cover CER/CARB/NBR	5KL01AAC	All models with MECH Cover A316							
6	Kit chromate bush bearing	5KL35AAF	All models <b>FOR REPAIR ONLY</b>							
8	Lower support cast iron	561450070	All models							
9	Spacer DOL	562550050	All models							
	Spacer SD	562550060	All models							
10	Upper bracket DOL/SD	561450080	All models							
11	Thrust bearing bracket	561450060	All models							
	Filling valve Brass	549300020	All models							
12	Bottom cover	564250020	All models							
*14	Kit carbon bush bearing	5KL35AAC	All models							
15	Sand guard 316 SS	568600040	All models							
16	Release valve Brass	549300010	All models							
17	Filling plug Brass	-	All models							
18	Cable gland gasket EPDM	-	All models							

7	Stator assy DOL	code 540640220	540640230	540640240	540640250	540640260	540640270	540640280	540640290	540640300	540640310
	Stator assy SD	540640225	540640235	540640245	540640255	540640265	540640275	540640285	540640295	540640305	540640315
13	Rotor shaft DUPLEX	code 555080220	555080230	555080240	555080250	555080260	555080270	555080280	555080290	555080300	555080310

PVC Winding Wire										
400-3-50 DOL										
Wire Code	573325817	573325812	573325814	573325816	573325816	573325817	573325818	573325812	573325813	573325814
Wire Type	D2,1/3,1	D1,6/2,4	D1,8/2,6	D2,0/2,9	D2,0/2,9	D2,1/3,1	D2,2/3,2	D1,6/2,4	D1,7/2,5	D1,8/2,6
Tot wire need [m]	395	745	685	640	580	595	605	1025	1110	1170
400/690-3-50 SD										
Wire Code	573325817	573325812	573325814	573325816	573325816	573325817	573325818	573325812	573325813	573325814
Wire Type	D2,1/3,1	D1,6/2,4	D1,8/2,6	D2,0/2,9	D2,0/2,9	D2,1/3,1	D2,2/3,2	D1,6/2,4	D1,7/2,5	D1,8/2,6
Tot wire need [m]	395	745	685	640	575	595	605	1025	1110	1170
In case of order, the quantity delivered will depend from the coil currently available.										

Flat Power cable HO7BB-F ACS approved										
400-3-50 DOL										
Cable code - 1m	572851264	572851264	572851266	572851266	572851266	572851266	572851268	572851268	572851270	572851270
Section (mm2)	1X10	1X10	1X16	1X16	1X16	1X16	1X25	1X25	1X35	1X35
Cable code , ground - 5,5 m	556990020	556990020	556990030	556990030	556990030	556990030	556990040	556990040	556990050	556990050
Section (mm2)	1X10	1X10	1X16	1X16	1X16	1X16	1X25	1X25	1X35	1X35
400/690-3-50 SD										
Cable code - 1m	572851262	572851262	572851264	572851264	572851264	572851264	572851266	572851266	572851266	572851266
Section (mm2)	1X6	1X6	1X6	1X10	1X10	1X10	1X10	1X16	1X16	1X16
Cable code , ground - 5,5m	556990020	556990020	556990020	556990020	556990020	556990020	556990020	556990030	556990030	556990030
Section (mm2)	1X10	1X10	1X10	1X10	1X10	1X10	1X10	1X16	1X16	1X16

Special Versions			
*3	Kit seals FPM	5KL02AAH	All models
*5	Kit MECH D45/ Cover SIC/SIC/NBR -A304	5KL01AAD	All models
16	Release valve FPM	549300071	All models
17	Plug 316 SS for PT100	540500020	All models
18	Cable gland gasket EPDM	568560290	All models, n. 2 for PT100
	Cable gland gasket FPM	568560291	All models, n. 2 for PT100
	Kit PT100 EPDM	5KL30AAX	All models

(6) = WARNING. These parts replacement requires an Authorized Service.

## CP8W 8" Submersible Motors

CP8W	300T235	370T235	450T235	520T235	550T235	600T235	670T235	750T235	830T235	930T235
3Ph 230V 50Hz DOL										
code										
CP8W	300T235	370T235	450T235	520T235	550T235	600T235	670T235	750T235	830T235	930T235
3Ph 230/400V 50Hz SD		507013046	507013056							
code										
kW	30	37	45	52	55	60	67	75	83	93

1	Kit cable glands EPDM 1X6/10/16	5KL30ABR								
	Kit cable glands EPDM 1X25/35	5KL30ABS								
			DOL models	Kits common to CP8W & CP8W/A						
*2	Kit thrust bearing	5KL41AAA								
*3	Kit seals NBR	5KL02AAB								
4	Kit screws 304 SS	5KL40AAB								
*5	Kit MECH D45 / Cover CER/CARB/NBR	5KL01AAC								
6	Kit chromate bush bearing	5KL35AAF								
8	Lower support cast iron	561450070								
9	Spacer DOL	562550050								
	Spacer SD	562550060								
10	Upper bracket DOL/SD	561450080								
11	Thrust bearing bracket	561450060								
	Filling valve Brass	549300020								
12	Bottom cover	564250020								
*14	Kit carbon bush bearing	5KL35AAC								
15	Sand guard 316 SS	568600040								
16	Release valve Brass	549300010								
17	Filling plug Brass	-								
18	Cable gland gasket EPDM	-								

7	Stator assy DOL	code								
	Stator assy SD		540640236	540640246						
13	Rotor shaft DUPLEX	code	555080220	555080230	555080240	555080250	555080260	555080270	555080280	555080290
			555080300	555080310						

PVC Winding Wire											
			230-3-50 DOL								
Wire Code											
Wire Type											
Tot wire need [m]											
			230/400-3-50 SD								
Wire Code			573325818	573325813							
Wire Type			D2,2/3,24	D1,7/2,5							
Tot wire need [m]			485	775							
In case of order, the quantity delivered will depend from the coil currently available.											

Flat Power cable H07BB-F ACS approved											
			230-3-50 DOL								
Cable code - 1m											
Section (mm2)											
Cable code , ground - 5,5 m											
Section (mm2)											
			230/400-3-50 SD								
Cable code - 1m			572851264	572851266							
Section (mm2)			1X10	1X16							
Cable code , ground - 5,5m			556990020	556990030							
Section (mm2)			1X10	1X16							

Special Versions										
*3	Kit seals FPM	5KL02AAH								
*5	Kit MECH D45/ Cover SIC/SIC/NBR	5KL01AAD								
16	Release valve FPM	549300071								
17	Plug 316 SS for PT100	540500020								
18	Cable gland gasket EPDM	568560290								
	Cable gland gasket FPM	568560291								
	Kit PT100 EPDM	5KL30AAX								

(6) = WARNING. These parts replacement requires an Authorized Service.

\* Recommended spare parts - Parti di ricambio consigliate  
\* Pièces détachées conseillées - Empfohlene Ersatzteile