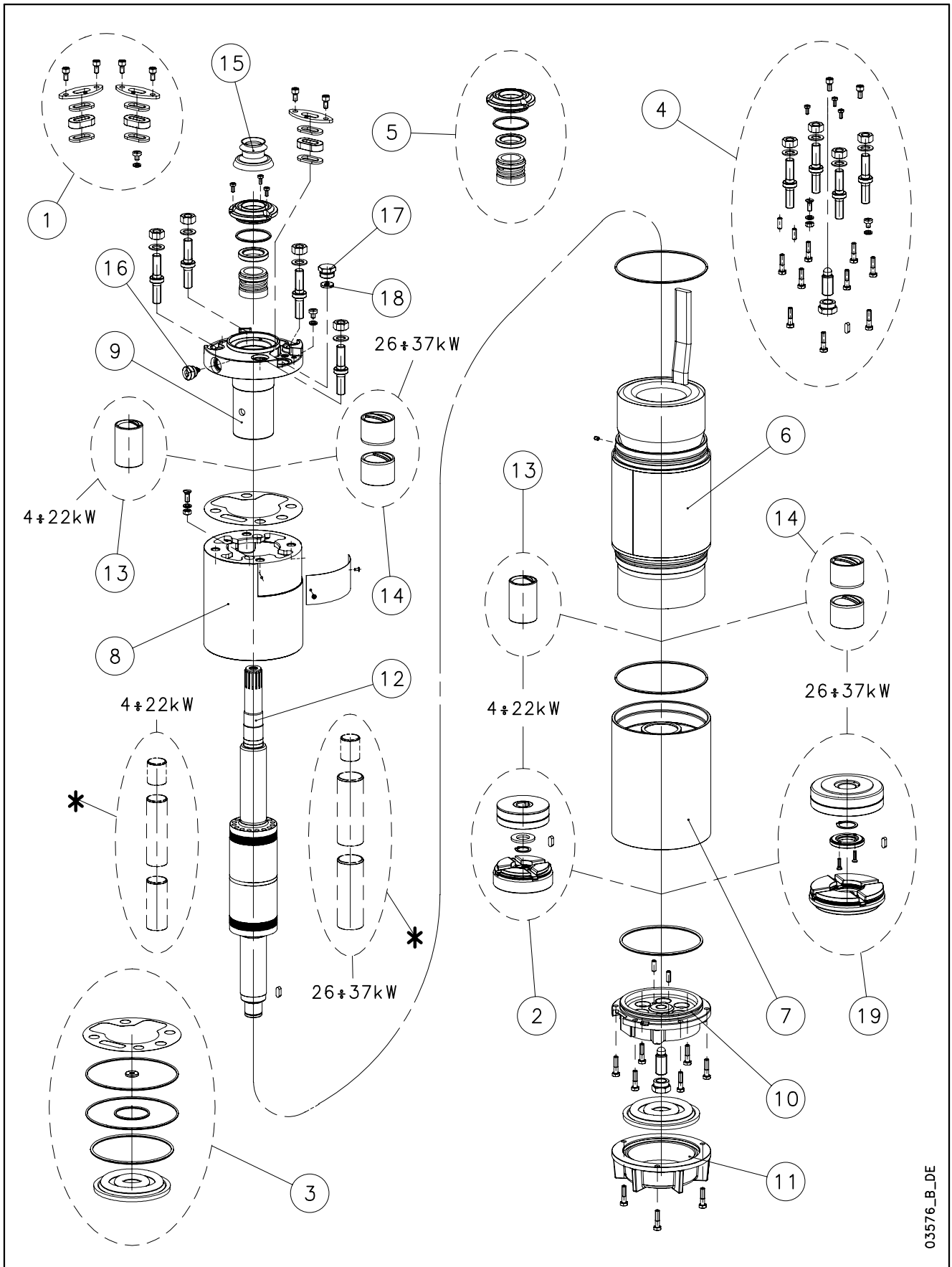


L6W-L6W HT/A - CP6W-CP6W HT/A



03576_B_DE

N.	Descrizione it	Description en	Description fr	Beschreibung de	Descripción es	Descrição pt
1	Kit pressacavi	Kit cable glands	Kit press étoupes	Kabelverschraubungensatz	Kit sujetascable	Kit pressacabos
2	Kit reggispinta completo da 4 a 22 kW	Thrust bearing kit complete from 4 to 22 kW	Kit palier de butée complet de 4 à 22 kW	Drucklagerbausatz komplet von 4 bis 22 kW	Kit cojinete de empuje completo de 4 a 22 kW	Kit Apoios completo de 4 a 22 kW
3	Kit guarnizioni	Seals kit	Kit Garnitures	Bausatz Dichtungen	Kit juntas	Kit guarnições
4	Kit Viterie	Screws kit	Kit Visserie	Bausatz Schrauben	Kit tornillos	Kit parafusos
5	Kit tenuta/Flangia	Kit seals / Flange	Kit garnitures / Bride	Bausatz dichtungen / Flansch	Kit juntas / Brida	Kit Empanque/Flange
6	Statore completo	Stator assy	Stator complet	Stator komplet	Estator completo	Estator complet
7	Supporto inferiore	Lower support	Support inférieur	Untere Lagerung	Soporte inferior	Suporte inferior
8	Distanziale	Spacer	Entretoise	Distanzstück	Distanciador	Distanciador
9	Supporto superiore	Upper bracket	Support supérieur	Obere Lagerung	Soporte superior	Suporte superior
10	Supporto kit reggispinta	Thrust bearing bracket kit	Support kit palier de butée	Drucklagergehäuse	Soporte kit cojinete de empuje	Suporte Kit Apoios
11	Fondello diaframma	Bottom cover diaphragm	Couvercle inférieur soufflet	Untere Abdeckung Blasebalg	Tapa inferior de sujeta	Tampa inferior do fole
12	Albero rotore	Rotor shaft	Arbre rotor	Rotorwelle	Árbol rotor	Veio rotor
13	Boccola cuscinetto sup./inf. da 4 a 22kW	Upper/lower bush bearing from 4 to 22 kW	Roulement à douille supérieur/inférieur de 4 à 22 kW	Obere / Untere buchsenslager von 4 bis 22 kW	Cojinete de casquillo superior -inferior de 4 a 22 kW	Rolamento em bucha superior-inferior de 4 a 22 kW
14	Boccola cuscinetto sup./inf. da 26 a 37kW	Upper/lower bush bearing from 26 to 37 kW	Roulement à douille supérieur/inférieur de 26 à 37 kW	Obere / Untere buchsenslager von 26 bis 37 kW	Cojinete de casquillo superior- inferior de 26 a 37 kW	Rolamento em bucha superior-inferior de 26 a 37 kW
15	Parasabbia	Sand guard	Anti-sable	Sandschutz	Protección de arena	Protecção Vedante
16	Valvola sfiato	Relief valve	Soupape de Purge	Ablassventil	Valvula de purga	Válvula
17	Tappo riempimento	Filling plug	Bouchon de remplissage	Füllstoff-Stecker	Tapón de llenado	Bujão
18	Guarnizione pressacavo	Cable gland gasket	Joint de press étoupe	Kabelverschraubungen Dichtung	Junta sujetacable	O-ring pressacabo
19	Kit reggispinta completo da 26 a 37 kW	Thrust bearing kit complete from 26 to 37 kW	Kit palier de butée complet de 26 à 37 kW	Drucklagerbausatz komplet von 26 bis 37 kW	Kit cojinete de empuje completo de 26 a 37 kW	Kit Apoios completo de 26 a 37 kW
*	Solo per riparazioni	For repair only	Pour réparations seulement	Nur für die Reparatur	Sólo para la reparación	Para o reparo unicamente
N.	Beschrijving nl	Περιγραφή el	Açıklama tr	Kuvaus fi	Описание ru	Opis pl
1	Kabelklem set	Σετ σφιγκτήρων καλωδίων	Kablo bez kiti	Kaapelinpuristinsarja	Комплект каб.уплотнителей	Zestaw mocowania kabla
2	Complete druklager set van 4 tot 22 kW	Πλήρες σετ ωπτικού ρουλεμάν 4 - 22 kW	Komple ayar pulu kiti 4 - 22 kW	Täydellinen painelaakerisarja 4-22 kW	Полный комплект упорного подшипника от 4 до 22 кВт	Kompletny zestaw łożyska ciernego od 4 do 22 kW
3	Kit met dichtingen	Σετ τοιμοχών	Conta kiti	Tiivistesarja	КОМПЛЕКТ прокладок	ZESTAW Uszczelek
4	Kit met schroeven	Σετ βιδών	Vida kiti	Ruuvisarja	КОМПЛЕКТ винтов	ZESTAW wkręty
5	Mechanische afdichting/Flens	Σετ ανοχών στεγανότητας/Φλάντζας	Mekanik conta / Flanş	Tiivistesarja / Laippa	КОМПЛЕКТ прокладок/фланца	Zestaw łożysko tulejowe
6	Stator compleet	Πλήρης στάτορας	Statör tamamı	Täydellinen staattori	Статор полный	Stator
7	Onderste steun	Κάτω φορέας	Alt segman braket	Alatuki	Нижняя опора	Dolny wspornik
8	Afstandsstuk	Αποστάσεων	Ara halkası	Välilevy	Распорная	Część dystansowa
9	Bovenste steun	Επάνω φορέας	Ust braket	Ylätuki	Верхняя опора	Górny wspornik
10	Steun druklager kit	Φορέας σετ ωπτικού ρουλεμάν	Bindirme yatağı kiti desteği	Painelaakerisarjan tuki	Опора комплекта упорного подшипника	Wspornik zestawu łożyska wzdużnego
11	Bedekking onderkant de membraan	Κάλυμμα διαφράγματος	Zeminlemek kapağı Diyafram	Alaosan, kalvo	диафрагма основания крышка	Dolna pokrywa Ko nierz
12	Rotoras	Άξονας στροφείου	Rotor mili	Roottorin akseli	ось ротора	Wałek (z rotorem)
13	Bovenste/Onderste Bus van 4 tot 22 kW	Κορυφή / Κάτω ένασφαιρου ρουλεμάν 4 - 22 kW	Burç yatağı üstteki / alt 4-22 kW	Holkilaakeri ylempi / alempi 4-22 kW	Подшипник со втулкой верхне-низко от 4 до 22 кВт	łożysko tulejowe wyższy / obniżać od 4 do 22 kW
14	Bovenste/Onderste Bus van 26 tot 37 kW	Κορυφή / Κάτω ένασφαιρου ρουλεμάν 26 - 37 kW	Burç yatağı üstteki / alt 26-37 kW	Holkilaakeri ylempi / alempi 26-37 kW	Подшипник со втулкой верхне-низко от 26 до 37 кВт	łożysko tulejowe wyższy / obniżać od 26 do 37 kW
15	Beschermkap	Προστατευτικό άμμου	Kum sizintisi önleme	Hiekkasuoja	Защита от песка	Ochrona przeciw-piaskowa
16	Ontluchtingsventiel	Βαλβίδα εξαερισμού	Tahliye valfi	Paineenrajoitusventtiili	Редукционный клапан	Zawór odpowietrzający
17	Vulplug	Πώμα πλήρωσης	Şarj fişi	Täyttötulppa	Пробка заполнения	Korek zalewowy
18	Kabelklem pakking	Περίβλημα σφιγκτήρα καλωδίων	Kablo bez contası	Kaapelinpuristimen tiiviste	Прокладка уплотнителей кабеля	Uszczelniać kabla
19	Complete druklager set van 26 tot 37 kW	Πλήρες σετ ωπτικού ρουλεμάν 26 - 37 kW	Komple ayar pulu kiti 26 - 37 kW	Täydellinen painelaakerisarja 26-37 kW	Полный комплект упорного подшипника от 26 до 37 кВт	Kompletny zestaw łożyska ciernego od 26 do 37 kW
*	Alleen voor reparatie	επισκευή μόνο	Için tamir sadece	Korjattavaksi vain	для ремонт только	Do naprawy tylko

L6W/B 6" Submersible Motors

L6W	40T405/B	55T405/B	75T405/B	93T405/B	110T405/B	130T405/B	150T405/B	185T405/B	220T405/B	
3Ph 400V 50Hz DOL	code 507150010	507150020	507150030	507150040	507150050	507150060	507150070	507150080	507150090	
L6W	55T405/B	75T405/B	93T405/B	110T405/B	130T405/B	150T405/B	185T405/B	220T405/B		
3Ph 400/690V 50Hz SD	code -	507150025	507150035	507150045	507150055	507150065	507150075	507150085	507150095	
	kW	4	5,5	7,5	9,3	11	13	15	18,5	22

1	Kit cable glands EPDM	5KL30ABC	
*2	Thrust bearing kit 4 - 22 kW	5KL41AAC	
*3	Seals kit NBR	5KL02AAD	
4	Screws kit	5KL40AAD	
*5	Kit MECH D28 / Flange CER/CARB/FPM - A30	5KL01AAG	
7	Lower support cast iron	561450560	ACS approved paint
8	Spacer	562550150	ACS approved paint
9	Upper bracket DOL	561450580	ACS approved paint
	Upper bracket SD	561450590	ACS approved paint
10	Thrust bearing bracket	561450550	ACS approved paint
11	Bottom cover	564250070	ACS approved paint
*13	Upper/lower bush bearing 4 - 22 kW	562590010	
*14	Upper/lower bush bearing 26 - 37 kW	-	
15	Sand guard EPDM	168561020	
16	Release valve 316SS NBR	549300070	
17	Filling plug EPDM 316 SS	540500010	
18	Cable gland gasket EPDM	568560290	
19	Thrust bearing kit 26 - 37 kW	-	
(*)	Bush bearings chromate	5KL35AAD	FOR REPAIR ONLY

6	Stator assy DOL	code 540660010	540660020	540660030	540660040	540660050	540660060	540660070	540660080	540660090
	Stator assy SD	-	540660025	540660035	540660045	540660055	540660065	540660075	540660085	540660095
12	Rotor shaft 420SS	code 555082010	555082020	555082030	555082040	555082050	555082060	555082070	555082080	555082090

PVC Winding Wire										
400-3-50 DOL										
Wire Code	573325804	573325806	573325807	573325808	573325809	573325810	573325812	573325814	573325814	573325814
Wire Type	D0,8/1,5	D1,0/1,7	D1,1/1,8	D1,2/1,9	D1,3/2,1	D1,4/2,2	D1,6/2,4	D1,8/2,6	D1,8/2,6	D1,8/2,6
Tot wire need [m]	315	275	255	240	225	215	205	195	180	180
400/690-3-50 SD										
Wire Code	-	573325803	573325804	573325806	573325807	573325808	573325809	573325812	573325814	573325814
Wire Type		D0,65/1,3	D0,7/1,4	D0,8/1,5	D1,0/1,7	D1,1/1,8	D1,2/1,9	D1,3/2,1	D1,6/2,4	D1,6/2,4
Tot wire need [m]		435	405	395	370	340	340	315	310	310
In case of order, the quantity delivered will depend from the coil currently available.										

Flat Power cable H07BB-F ACS approved										
400-3-50 DOL										
Cable code	572850960	572850960	572850960	572850960	572850960	572850960	572850960	572850962	572850962	572850962
Section (mm2)	4G4	4G4	4G4	4G4	4G4	4G4	4G4	4G6	4G6	4G6
400/690-3-50 SD										
Cable code	572850910	572850910	572850910	572850910	572850910	572850910	572850910	572850910	572850910	572850910
Section (mm2)	3X4	3X4	3X4	3X4	3X4	3X4	3X4	3X4	3X4	3X4
Cable code	572850960	572850960	572850960	572850960	572850960	572850960	572850960	572850960	572850960	572850960
Section (mm2)	4G4	4G4	4G4	4G4	4G4	4G4	4G4	4G4	4G4	4G4
Codes are referred to 1 m of cable										

Special Versions		
1	Kit cable glands FPM	5KL30ABD
*3	Seals kit EPDM	5KL02AAE
	Seals kit FPM	5KL02AAF
*5	Kit MECH D28 / Flange SIC/SIC/NBR	5KL01AAH
	Kit MECH D28 / Flange SIC/SIC/FPM	5KL01AAK
15	Sand guard FPM	168561021
16	Release valve 316SS FPM	549300071
17	Plug for PT100	540500020
18	Cable gland gasket FPM	568560291

(*) = WARNING. These parts replacement requires an Authorized Service.

* Recommended spare parts - Parti di ricambio consigliate
 * Pièces détachées conseillées - Empfohlene Ersatzteile

L6W/B 6" Submersible Motors

L6W 3Ph 400V 50Hz DOL	code	260T405/B 507150100	300T405/B 507150110	370T405/B 507150120
L6W 3Ph 400/690V 50Hz SD	code	260T405/B 507150105	300T405/B 507150115	370T405/B 507150125
	kW	26	30	37

1	Kit cable glands EPDM 3/4 41X26/15	5KL30ABC		
	Kit cable glands EPDM 3/4 41X30/14	5KL30ABK	4G10 from 2010	
2	Thrust bearing kit 4 - 22 kW	-		
*3	Seals kit NBR	5KL02AAD		
4	Screws kit	5KL40AAD		
*5	Kit MECH D28 / Flange CER/CARB/FPM - A30	5KL01AAG		
7	Lower support cast iron	561450570	ACS approved paint	
8	Spacer	562550150	ACS approved paint	
9	Upper bracket DOL	561450600	ACS approved paint	
	Upper bracket SD	561450610	ACS approved paint	
10	Thrust bearing bracket	561450550	ACS approved paint	
11	Bottom cover	564250070	ACS approved paint	
*13	Upper/lower bush bearing 4 - 22 kW	-		
*14	Upper/lower bush bearing 26 - 37 kW	562590060	N. 4	
15	Sand guard EPDM	168561020		
16	Release valve 316SS NBR	549300070		
17	Filling plug EPDM 316 SS	540500010		
18	Cable gland gasket EPDM	568560290		
*19	Thrust bearing kit 26 - 37 kW	5KL41AAD		
(*)	Bush bearings chromate	5KL35AAE	FOR REPAIR ONLY	

6	Stator assy DOL	code	540660100	540660110	540643860
	Stator assy SD	code	540660105	540660115	540643865
12	Rotor shaft 420SS	code	555082100	555082110	555082120

PVC Winding Wire			
400-3-50 DOL			
Wire Code	573325812	573325813	573325844
Wire Type	D1,6/2,4	D1,7/2,5	D1,8/2,6
Tot wire need [m]	300	285	305*
400/690-3-50 SD			
Wire Code	573325813	573325813	573325844
Wire Type	D1,7/2,5	D1,7/2,5	D1,8/2,6/2,8
Tot wire need [m]	300	285	305*
* Wire HT/HD instead of PVC			
In case of order, the quantity delivered will depend from the coil currently available.			

Flat Power cable H07BB-F ACS approved			
400-3-50 DOL			
Cable code	572850962	572850964	572850964
Section (mm2)	4G6	4G10	4G10
400/690-3-50 SD			
Cable code	572850910	572850910	572850910
Section (mm2)	3X4	3X4	3X4
Cable code	572850960	572850960	572850960
Section (mm2)	4G4	4G4	4G4
Codes are referred to 1 m of cable			

Special Versions			
1	Kit cable glands FPM 3/4 41X30/14	5KL30ABL	4G10 from 2010
*3	Seals kit EPDM	5KL02AAE	
	Seals kit FPM	5KL02AAF	
*5	Kit MECH D28 / Flange SIC/SIC/NBR	5KL01AAH	
	Kit MECH D28 / Flange SIC/SIC/FPM	5KL01AAK	
15	Sand guard FPM	168561021	
16	Release valve 316SS FPM	549300071	
17	Plug for PT100	540500020	
18	Cable gland gasket FPM	568560291	

(*) = WARNING. These parts replacement requires an Authorized Service.

* Recommended spare parts - Parti di ricambio consigliate
* Pièces détachées conseillées - Empfohlene Ersatzteile

L6W/B 6" Submersible Motors

L6W 3Ph 230V 50Hz DOL	code	40T235/B	55T235/B	75T235/B	93T235/B	110T235/B	130T235/B	150T235/B	185T235/B	220T235/B
		507150011		507150031		507150051		507150071		507150091
L6W 3Ph 230/400V 50Hz SD	code	-	55T235/B	75T235/B	93T235/B	110T235/B	130T235/B	150T235/B	185T235/B	220T235/B
	kW	4	5,5	7,5	9,3	11	13	15	18,5	22

1	Kit cable glands EPDM	5KL30ABC								
*2	Thrust bearing kit 4 - 22 kW	5KL41AAC								
*3	Seals kit NBR	5KL02AAD								
4	Screws kit	5KL40AAD								
*5	Kit MECH D28 / Flange CER/CARB/FPM - A30	5KL01AAG								
7	Lower support cast iron	561450560	ACS approved paint							
8	Spacer	562550150	ACS approved paint							
9	Upper bracket DOL	561450580	ACS approved paint							
	Upper bracket SD	561450590	ACS approved paint							
10	Thrust bearing bracket	561450550	ACS approved paint							
11	Bottom cover	564250070	ACS approved paint							
*13	Upper/lower bush bearing 4 - 22 kW	562590010								
*14	Upper/lower bush bearing 26 - 37 kW	-								
15	Sand guard EPDM	168561020								
16	Release valve 316SS NBR	549300070								
17	Filling plug EPDM 316 SS	540500010								
18	Cable gland gasket EPDM	568560290								
19	Thrust bearing kit 26 - 37 kW	-								
(*)	Bush bearings chromate	5KL35AAD	FOR REPAIR ONLY							

6	Stator assy DOL	code	540660011		540660031		540660051		540660071		540660091
	Stator assy SD		-								
12	Rotor shaft 420SS	code	555082010	555082020	555082030	555082040	555082050	555082060	555082070	555082080	555082090

PVC Winding Wire										
230-3-50 DOL										
Wire Code	573325804		573325807		573325809		573325812		573325814	
Wire Type	D0,8/1,5		D1,1/1,8		D1,3/2,1		D1,6/2,4		D1,8/2,6	
Tot wire need [m]	305		245		225		210		180	
230/400-3-50 SD										
Wire Code										
Wire Type										
Tot wire need [m]										
In case of order, the quantity delivered will depend from the coil currently available.										

Flat Power cable H07BB-F ACS approved										
230-3-50 DOL										
Cable code	572850960	572850960	572850960	572850960	572850960	572850962	572850962	572850962	572850962	572850964
Section (mm2)	4G4	4G4	4G4	4G4	4G4	4G6	4G6	4G6	4G6	4G10
230/400-3-50 SD										
Cable code	572850910	572850910	572850910	572850910	572850910	572850910	572850910	572850910	572850910	572850910
Section (mm2)	3X4	3X4	3X4	3X4	3X4	3X4	3X4	3X4	3X4	3X4
Cable code	572850960	572850960	572850960	572850960	572850960	572850960	572850960	572850960	572850960	572850960
Section (mm2)	4G4	4G4	4G4	4G4	4G4	4G4	4G4	4G4	4G4	4G4
Codes are referred to 1 m of cable										

Special Versions										
1	Kit cable glands FPM	5KL30ABD								
*3	Seals kit EPDM	5KL02AAE								
	Seals kit FPM	5KL02AAF								
*5	Kit MECH D28 / Flange SIC/SIC/NBR	5KL01AAH								
	Kit MECH D28 / Flange SIC/SIC/FPM	5KL01AAK								
15	Sand guard FPM	168561021								
16	Release valve 316SS FPM	549300071								
17	Plug for PT100	540500020								
18	Cable gland gasket FPM	568560291								

(*) = WARNING. These parts replacement requires an Authorized Service.

* Recommended spare parts - Parti di ricambio consigliate
 * Pièces détachées conseillées - Empfohlene Ersatzteile

L6W/B 6" Submersible Motors

L6W	260T235/B	300T235/B	370T235/B
3Ph 230V 50Hz DOL code			
L6W	260T235/B	300T235/B	370T235/B
3Ph 230/400V 50Hz SD code		507150116	
kW	26	30	37

1	Kit cable glands EPDM 3/4 41X26/15	5KL30ABC	
	Kit cable glands EPDM 3/4 41X30/14	5KL30ABK	4G10 from 2010
2	Thrust bearing kit 4 - 22 kW	-	
*3	Seals kit NBR	5KL02AAD	
4	Screws kit	5KL40AAD	
*5	Kit MECH D28 / Flange CER/CARB/FPM - A30	5KL01AAG	
7	Lower support cast iron	561450570	ACS approved paint
8	Spacer	562550150	ACS approved paint
9	Upper bracket DOL	561450600	ACS approved paint
	Upper bracket SD	561450610	ACS approved paint
10	Thrust bearing bracket	561450550	ACS approved paint
11	Bottom cover	564250070	ACS approved paint
*13	Upper/lower bush bearing 4 - 22 kW	-	
*14	Upper/lower bush bearing 26 - 37 kW	562590060	N. 4
15	Sand guard EPDM	168561020	
16	Release valve 316SS NBR	549300070	
17	Filling plug EPDM 316 SS	540500010	
18	Cable gland gasket EPDM	568560290	
*19	Thrust bearing kit 26 - 37 kW	5KL41AAD	
(*)	Bush bearings chromate	5KL35AAE	FOR REPAIR ONLY

6	Stator assy DOL code			
	Stator assy SD		540660116	
12	Rotor shaft 420SS code	555082100	555082110	555082120

PVC Winding Wire			
		230-3-50 DOL	
Wire Code			
Wire Type			
Tot wire need [m]			
		230/400-3-50 SD	
Wire Code		573325812	
Wire Type		D1,6/2,4	
Tot wire need [m]		325	
* Wire HT/HD instead of PVC			
In case of order, the quantity delivered will depend from the coil currently available.			

Flat Power cable H07BB-F ACS approved			
		230-3-50 DOL	
Cable code			
Section (mm2)			
		230/400-3-50 SD	
Cable code		572850914	
Section (mm2)		3X10	
Cable code		572850964	
Section (mm2)		4G10	
Codes are referred to 1 m of cable			

Special Versions			
1	Kit cable glands FPM 3/4 41X30/14	5KL30ABL	4G10 from 2010
*3	Seals kit EPDM	5KL02AAE	
	Seals kit FPM	5KL02AAF	
*5	Kit MECH D28 / Flange SIC/SIC/NBR	5KL01AAH	
	Kit MECH D28 / Flange SIC/SIC/FPM	5KL01AAK	
15	Sand guard FPM	168561021	
16	Release valve 316SS FPM	549300071	
17	Plug for PT100	540500020	
18	Cable gland gasket FPM	568560291	

(*) = WARNING. These parts replacement requires an Authorized Service.

* Recommended spare parts - Parti di ricambio consigliate
* Pièces détachées conseillées - Empfohlene Ersatzteile

L6W/B HT 6" Submersible Motors High Temperature

L6W	40T405/B	55T405/B	75T405/B	93T405/B	110T405/B	130T405/B	150T405/B	185T405/B	
3Ph 400V 50Hz DOL HT	code 507160020	507160030	507160040	507160050	507160060	507160070	507160080	507160090	
L6W	-	55T405/B	75T405/B	93T405/B	110T405/B	130T405/B	150T405/B	185T405/B	
3Ph 400/690V 50Hz SD HT	code -	-	-	507160055	507160065	507160075	507160085	507160095	
	kW	4	5,5	7,5	9,3	11	13	15	18,5

1	Kit cable glands EPDM	5KL30ABC	
*2	Thrust bearing kit 4 - 22 kW	5KL41AAC	
*3	Seals kit NBR	5KL02AAD	
4	Screws kit	5KL40AAD	
*5	Kit MECH D28 / Flange CER/CARB/FPM - A30	5KL01AAG	
7	Lower support cast iron	561450560	ACS approved paint
8	Spacer	562550150	ACS approved paint
9	Upper bracket DOL	561450580	ACS approved paint
	Upper bracket SD	561450590	ACS approved paint
10	Thrust bearing bracket	561450550	ACS approved paint
11	Bottom cover	564250070	ACS approved paint
*13	Upper/lower bush bearing 4 - 22 kW	562590010	N. 2
*14	Upper/lower bush bearing 26 - 37 kW	-	
15	Sand guard EPDM	168561020	
16	Release valve 316SS NBR	549300070	
17	Filling plug EPDM 316 SS	540500010	
18	Cable gland gasket EPDM	568560290	
19	Thrust bearing kit 26 - 37 kW	-	
(*)	Bush bearings chromate	5KL35AAD	FOR REPAIR ONLY

6	Stator assy DOL HT	code 54066002B	54066003B	54066004B	54066005B	54066006B	54066007B	54066008B	54066009B
	Stator assy SD HT				54066005D	54066006D	54066007D	54066008D	54066009D
12	Rotor shaft 420SS	code 555082020	555082030	555082040	555082050	555082060	555082070	555082080	555082090

HT/HD Winding Wire								
400-3-50 DOL								
Wire Code	573325333	573325334	573325336	573325337	573325338	573325840	573325842	573325842
Wire Type	D0,7/1,7	D0,8/1,8	D1,0/2,0	D1,1/2,1	D1,2/2,2	D1,4/2,4	D1,6/2,6	D1,6/2,6
Tot wire need [m]	270	240	235	220	205	205	185	175
400/690-3-50 SD								
Wire Code				573325333	573325334	573325335	573325337	573325337
Wire Type				D0,7/1,7	D0,8/1,8	D0,9/1,9	D1,1/2,1	D1,1/2,1
Tot wire need [m]				375	345	340	320	310

In case of order, the quantity delivered will depend from the coil currently available.

Flat Power cable H07BB-F ACS approved								
400-3-50 DOL								
Cable code	572850960	572850960	572850960	572850960	572850960	572850960	572850962	572850962
Section (mm2)	4G4	4G4	4G4	4G4	4G4	4G4	4G6	4G6
400/690-3-50 SD								
Cable code	572850910	572850910	572850910	572850910	572850910	572850910	572850910	572850910
Section (mm2)	3X4	3X4	3X4	3X4	3X4	3X4	3X4	3X4
Cable code	572850960	572850960	572850960	572850960	572850960	572850960	572850960	572850960
Section (mm2)	4G4	4G4	4G4	4G4	4G4	4G4	4G4	4G4

Codes are referred to 1 m of cable

Special Versions		
1	Kit cable glands FPM	5KL30ABD
*3	Seals kit EPDM	5KL02AAE
	Seals kit FPM	5KL02AAF
*5	Kit MECH D28 / Flange SIC/SIC/NBR	5KL01AAH
	Kit MECH D28 / Flange SIC/SIC/FPM	5KL01AAK
15	Sand guard FPM	168561021
16	Release valve 316SS FPM	549300071
17	Plug for PT100	540500020
18	Cable gland gasket FPM	568560291

(*) = WARNING. These parts replacement requires an Authorized Service.

* Recommended spare parts - Parti di ricambio consigliate
 * Pièces détachées conseillées - Empfohlene Ersatzteile

L6W/B HT 6" Submersible Motors High Temperature

L6W 3Ph 400V 50Hz DOL HT	code	220T405/B 507160100	260T405/B 507160110	300T405/B 507160120	300T405/B 507160130
L6W 3Ph 400/690V 50Hz SD HT	code	220T405/B 507160105	260T405/B 507160115	300T405/B 507160125	300T405/B 507160135
	kW	22	26	30	30

1	Kit cable glands EPDM from BEGIN 2010	5KL30ABK	cable 4G10
2	Thrust bearing kit 4 - 22 kW	-	
*3	Seals kit NBR	5KL02AAD	
4	Screws kit	5KL40AAD	
*5	Kit MECH D28 / Flange CER/CARB/FPM - A30	5KL01AAG	
7	Lower support cast iron	561450570	ACS approved paint
8	Spacer	562550150	ACS approved paint
9	Upper bracket DOL	561450600	ACS approved paint
	Upper bracket SD	561450610	ACS approved paint
10	Thrust bearing bracket	561450550	ACS approved paint
11	Bottom cover	564250070	ACS approved paint
*13	Upper/lower bush bearing 4 - 22 kW	-	
*14	Upper/lower bush bearing 26 - 37 kW	562590060	N. 4
15	Sand guard EPDM	168561020	
16	Release valve 316SS NBR	549300070	
17	Filling plug EPDM 316 SS	540500010	
18	Cable gland gasket EPDM	568560290	
*19	Thrust bearing kit 26 - 37 kW	5KL41AAD	
(*)	Bush bearings chromate	5KL35AAE	FOR REPAIR ONLY

6	Stator assy DOL HT	code	54066010B	54066011B	54064386B	54066012B
	Stator assy SD HT	code	54066010D	54066011D	54064386D	54066012D
12	Rotor shaft 420SS	code	555082100	555082110	555082120	555082170

2015 - 30kW Motors under test

HT/HD Winding Wire			
400-3-50 DOL HT			
Wire Code	573325840	573325841	573325844
Wire Type	D1,4/2,4	D1,5/2,5	D1,8/2,8
Tot wire need [m]	300	285	305
400/690-3-50 SD HT			
Wire Code	573325840	573325841	573325844
Wire Type	D1,4/2,4	D1,5/2,5	D1,8/2,8
Tot wire need [m]	300	285	305
In case of order, the quantity delivered will depend from the coil currently available.			

Flat Power cable H07BB-F ACS approved			
400-3-50 DOL			
Cable code	572850962	572850964	572850964
Section (mm2)	4G6	4G10	4G10
400/690-3-50 SD			
Cable code	572850910	572850910	572850910
Section (mm2)	3X4	3X4	3X4
Cable code	572850960	572850960	572850960
Section (mm2)	4G4	4G4	4G4
Codes are referred to 1 m of cable			

Special Versions			
1	Kit cable glands FPM from BEGIN 2010	5KL30ABL	cable 4G10
*3	Seals kit EPDM	5KL02AAE	
	Seals kit FPM	5KL02AAF	
*5	Kit MECH D28 / Flange SIC/SIC/NBR	5KL01AAH	
	Kit MECH D28 / Flange SIC/SIC/FPM	5KL01AAK	
15	Sand guard FPM	168561021	
16	Release valve 316SS FPM	549300071	
17	Plug for PT100	540500020	
18	Cable gland gasket FPM	568560291	

(*) = WARNING. These parts replacement requires an Authorized Service.