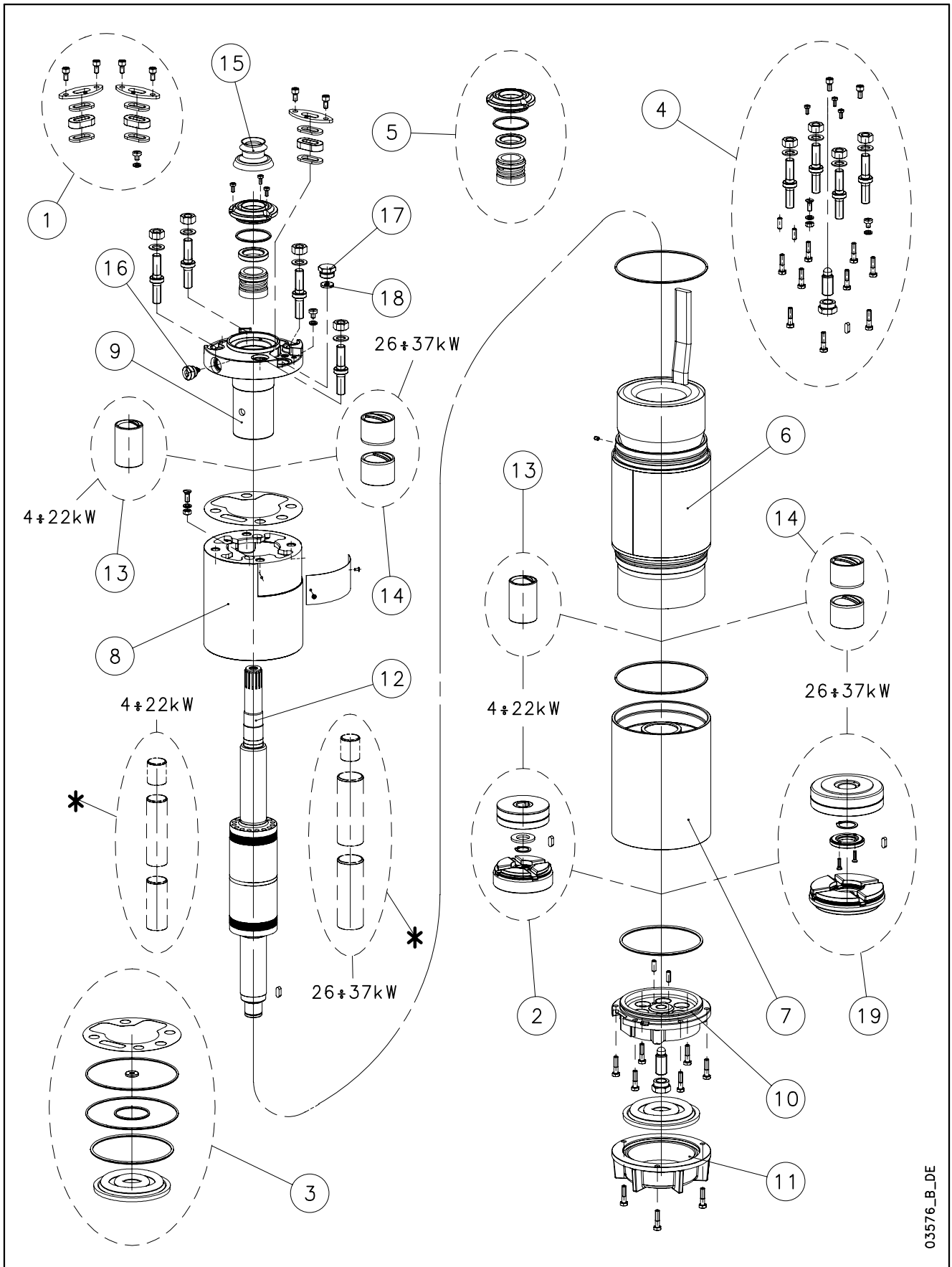


L6W-L6W HT/A - CP6W-CP6W HT/A



03576_B_DE

N.	Descrizione it	Description en	Description fr	Beschreibung de	Descripción es	Descrição pt
1	Kit pressacavi	Kit cable glands	Kit press étoupes	Kabelverschraubungensatz	Kit sujetascable	Kit pressacabos
2	Kit reggispinta completo da 4 a 22 kW	Thrust bearing kit complete from 4 to 22 kW	Kit palier de butée complet de 4 à 22 kW	Drucklagerbausatz komplet von 4 bis 22 kW	Kit cojinete de empuje completo de 4 a 22 kW	Kit Apoios completo de 4 a 22 kW
3	Kit guarnizioni	Seals kit	Kit Garnitures	Bausatz Dichtungen	Kit juntas	Kit guarnições
4	Kit Viterie	Screws kit	Kit Visserie	Bausatz Schrauben	Kit tornillos	Kit parafusos
5	Kit tenuta/Flangia	Kit seals / Flange	Kit garnitures / Bride	Bausatz dichtungen / Flansch	Kit juntas / Brida	Kit Empanque/Flange
6	Statore completo	Stator assy	Stator complet	Stator komplet	Estator completo	Estator complet
7	Supporto inferiore	Lower support	Support inférieur	Untere Lagerung	Soporte inferior	Suporte inferior
8	Distanziale	Spacer	Entretoise	Distanzstück	Distanciador	Distanciador
9	Supporto superiore	Upper bracket	Support supérieur	Obere Lagerung	Soporte superior	Suporte superior
10	Supporto kit reggispinta	Thrust bearing bracket kit	Support kit palier de butée	Drucklagergehäuse	Soporte kit cojinete de empuje	Suporte Kit Apoios
11	Fondello diaframma	Bottom cover diaphragm	Couvercle inférieur soufflet	Untere Abdeckung Blasebalg	Tapa inferior de sujeta	Tampa inferior do fole
12	Albero rotore	Rotor shaft	Arbre rotor	Rotorwelle	Árbol rotor	Veio rotor
13	Boccola cuscinetto sup./inf. da 4 a 22kW	Upper/lower bush bearing from 4 to 22 kW	Roulement à douille supérieur/inférieur de 4 à 22 kW	Obere / Untere buchsenslager von 4 bis 22 kW	Cojinete de casquillo superior -inferior de 4 a 22 kW	Rolamento em bucha superior-inferior de 4 a 22 kW
14	Boccola cuscinetto sup./inf. da 26 a 37kW	Upper/lower bush bearing from 26 to 37 kW	Roulement à douille supérieur/inférieur de 26 à 37 kW	Obere / Untere buchsenslager von 26 bis 37 kW	Cojinete de casquillo superior- inferior de 26 a 37 kW	Rolamento em bucha superior-inferior de 26 a 37 kW
15	Parasabbia	Sand guard	Anti-sable	Sandschutz	Protección de arena	Protecção Vedante
16	Valvola sfiato	Relief valve	Soupape de Purge	Ablassventil	Valvula de purga	Válvula
17	Tappo riempimento	Filling plug	Bouchon de remplissage	Füllstoff-Stecker	Tapón de llenado	Bujão
18	Guarnizione pressacavo	Cable gland gasket	Joint de press étoupe	Kabelverschraubungen Dichtung	Junta sujetacable	O-ring pressacabo
19	Kit reggispinta completo da 26 a 37 kW	Thrust bearing kit complete from 26 to 37 kW	Kit palier de butée complet de 26 à 37 kW	Drucklagerbausatz komplet von 26 bis 37 kW	Kit cojinete de empuje completo de 26 a 37 kW	Kit Apoios completo de 26 a 37 kW
*	Solo per riparazioni	For repair only	Pour réparations seulement	Nur für die Reparatur	Sólo para la reparación	Para o reparo unicamente
N.	Beschrijving nl	Περιγραφή el	Açıklama tr	Kuvaus fi	Описание ru	Opis pl
1	Kabelklem set	Σετ σφικτήρων καλωδίων	Kablo bez kiti	Kaapelinpuristinsarja	Комплект каб.уплотнителей	Zestaw mocowania kabla
2	Complete druklager set van 4 tot 22 kW	Πλήρες σετ ωπτικού ρουλεμάν 4 - 22 kW	Komple ayar pulu kiti 4 - 22 kW	Täydellinen painelaakerisarja 4-22 kW	Полный комплект упорного подшипника от 4 до 22 кВт	Kompletny zestaw łożyska ciernego od 4 do 22 kW
3	Kit met dichtingen	Σετ τοιμοχών	Conta kiti	Tiivistesarja	КОМПЛЕКТ прокладок	ZESTAW Uszczelek
4	Kit met schroeven	Σετ βιδών	Vida kiti	Ruuvisarja	КОМПЛЕКТ винтов	ZESTAW wkręty
5	Mechanische afdichting/Flens	Σετ ανοχών στεγανότητας/Φλάντζας	Mekanik conta / Flanş	Tiivistesarja / Laippa	КОМПЛЕКТ прокладок/фланца	Zestaw łożysko tulejowe
6	Stator compleet	Πλήρης στάτορας	Statör tamamı	Täydellinen staattori	Статор полный	Stator
7	Onderste steun	Κάτω φορέας	Alt segman braket	Alatuki	Нижняя опора	Dolny wspornik
8	Afstandsstuk	Αποστάσεων	Ara halkası	Välilevy	Распорная	Część dystansowa
9	Bovenste steun	Επάνω φορέας	Ust braket	Ylätuki	Верхняя опора	Górny wspornik
10	Steun druklager kit	Φορέας σετ ωπτικού ρουλεμάν	Bindirme yatađı kiti desteđi	Painelaakerisarjan tuki	Опора комплекта упорного подшипника	Wspornik zestawu łożyska wzduźnego
11	Bedekking onderkant de membraan	Κάλυμμα διαφράγματος	Zeminlemek kapađı Diyafram	Alaosan, kalvo	диафрагма основания крышка	Dolna pokrywa Ko nierz
12	Rotoras	Άξονας στροφείου	Rotor mili	Roottorin akseli	ось ротора	Wałek (z rotorem)
13	Bovenste/Onderste Bus van 4 tot 22 kW	Κορυφή / Κάτω ένασφαιρου ρουλεμάν 4 - 22 kW	Burç yatađı üstteki / alt 4-22 kW	Holkilaakeri ylempi / alempi 4-22 kW	Подшипник со втулкой верхне-низко от 4 до 22 кВт	łożysko tulejowe wyższy / obniżać od 4 do 22 kW
14	Bovenste/Onderste Bus van 26 tot 37 kW	Κορυφή / Κάτω ένασφαιρου ρουλεμάν 26 - 37 kW	Burç yatađı üstteki / alt 26-37 kW	Holkilaakeri ylempi / alempi 26-37 kW	Подшипник со втулкой верхне-низко от 26 до 37 кВт	łożysko tulejowe wyższy / obniżać od 26 do 37 kW
15	Beschermkap	Προστατευτικό άμμου	Kum sizintisi önleme	Hiekkasuoja	Защита от песка	Ochrona przeciw-piaskowa
16	Ontluchtingsventiel	Βαλβίδα εξαερισμού	Tahliye valfi	Paineenrajoitusventtiili	Редукционный клапан	Zawór odpowietrzający
17	Vulplug	Πώμα πλήρωσης	Şarj fişi	Täyttötulppa	Пробка заполнения	Korek zalewowy
18	Kabelklem pakking	Περίβλημα σφικτήρα καλωδίων	Kablo bez contası	Kaapelinpuristimen tiiviste	Прокладка уплотнителей кабеля	Uszczelniaç kabla
19	Complete druklager set van 26 tot 37 kW	Πλήρες σετ ωπτικού ρουλεμάν 26 - 37 kW	Komple ayar pulu kiti 26 - 37 kW	Täydellinen painelaakerisarja 26-37 kW	Полный комплект упорного подшипника от 26 до 37 кВт	Kompletny zestaw łożyska ciernego od 26 do 37 kW
*	Alleen voor reparatie	επισκευή μόνο	Için tamir sadece	Korjattavaksi vain	для ремонт только	Do naprawy tylko

L6WR/A 6" Submersible Motors

L6WR 3Ph 400V 50Hz DOL	code	40T405/A	55T405/A	75T405/A	93T405/A	110T405/A	130T405/A	150T405/A	185T405/A	220T405/A
L6WR 3Ph 400/690V 50Hz SD	code	-	-	75T405/A	93T405/A	110T405/A	130T405/A	150T405/A	185T405/A	220T405/A
	kW	4	5,5	7,5	9,3	11	13	15	18,5	22

1	Kit cable glands EPDM	5KL30ABG	All models							
2	Thrust bearing kit 4 - 22 kW	5KL41AAC	All models							
*3	Seals kit NBR	5KL02AAD	All models							
4	Screws kit	5KL40AAF	All models							
*5	Kit seals / Flange CER/CARB/NBR - DUPLEX	5KL01AAP	All models							
7	Lower support DUPLEX	561400290	All models							
8	Spacer	562500200	All models							
9	Upper bracket DOL / SD	561400350	All models							
*10	Thrust bearing bracket	561400410	All models							
11	Bottom cover	564200170	All models							
*13	Upper/lower bush bearing 4 - 22 kW	562590010	All models, N. 2							
*14	Upper/lower bush bearing 26 - 37 kW	-	All models							
15	Sand guard EPDM	168561020	All models							
16	Release valve A316 NBR	549300080	All models							
17	Filling plug DUPLEX	540500030	All models							
18	Cable gland gasket EPDM	568560290	All models							
19	Thrust bearing kit 26 - 37 kW	-	All models							
(*)	Bush bearings chromate	5KL35AAD	All models FOR REPAIR ONLY							

6	Stator assy DOL	code	540660410	540660420	540660430	540660440	540660450	540660460	540660470	540660480	540660490
	Stator assy SD		-	-	540660435	540660445	540660455	540660465	540660475	540660485	540660495
12	Rotor shaft DUPLEX	code	555082310	555082320	555082330	555082340	555082350	555082360	555082370	555082380	555082390

PVC Winding Wire										
400-3-50 DOL										
Wire Code	573325804	573325806	573325807	573325808	573325809	573325810	573325812	573325814	573325814	573325814
Wire Type	D0,8/1,5	D1,0/1,7	D1,1/1,8	D1,2/1,9	D1,3/2,1	D1,4/2,2	D1,6/2,4	D1,8/2,6	D1,8/2,6	D1,8/2,6
Tot wire need [m]	315	275	255	240	225	215	205	195	185	185
400/690-3-50 SD										
Wire Code	-	-	573325803	573325804	573325806	573325807	573325808	573325809	573325812	573325814
Wire Type	-	-	D0,65/1,3	D0,8/1,5	D1,0/1,7	D1,1/1,8	D1,2/1,9	D1,3/2,1	D1,6/2,4	D1,6/2,4
Tot wire need [m]	-	-	405	395	370	340	340	315	310	310
In case of order, the quantity delivered will depend from the coil currently available.										

Flat Power cable H07BB-F ACS approved										
400-3-50 DOL										
Cable code	572850960	572850960	572850960	572850960	572850960	572850960	572850960	572850962	572850962	572850962
Section (mm2)	4G4	4G4	4G4	4G4	4G4	4G4	4G4	4G6	4G6	4G6
400/690-3-50 SD										
Cable code	-	-	572850910	572850910	572850910	572850910	572850910	572850910	572850910	572850910
Section (mm2)	-	-	3X4	3X4	3X4	3X4	3X4	3X4	3X4	3X4
Cable code	-	-	572850960	572850960	572850960	572850960	572850960	572850960	572850960	572850960
Section (mm2)	-	-	4G4	4G4	4G4	4G4	4G4	4G4	4G4	4G4
Codes are referred to 1 m of cable										

Special Versions										
1	Kit cable glands FPM	5KL30ABH	All models							
*3	Seals kit EPDM	5KL02AAE	All models							
	Seals kit FPM	5KL02AAF	All models							
*5	Kit MECH D28 / Flange SIC/SIC/NBR	5KL01AAQ	All models							
	Kit MECH D28 / Flange SIC/SIC/FPM	5KL01AAR	All models							
15	Sand guard FPM	168561021	All models							
16	Release valve A316 FPM	549300071	All models							
17	Plug DUPLEX for PT100	540500040	All models							
18	Cable gland gasket FPM	568560291	All models							

(*) = WARNING. These parts replacement requires an Authorized Service.

L6WR/A 6" Submersible Motors

L6WR		260T405/A	300T405/A	370T405/A
3Ph 400V 50Hz DOL	code	507052100	507052110	507052120
L6WR		260T405/A	300T405/A	370T405/A
3Ph 400/690V 50Hz SD	code	507052105	507052115	507052125
	kW	26	30	37

1	Kit cable glands EPDM	5KL30ABG	All models	
	Kit cable glands EPDM from BEGIN 2010	5KL30ABP	All models cable 4G10	
2	Thrust bearing kit 4 - 22 kW	-	All models	
*3	Seals kit NBR	5KL02AAD	All models	
4	Screws kit	5KL40AAF	All models	
*5	Kit seals / Flange CER/CARB/NBR - DUPLEX	5KL01AAP	All models	
7	Lower support DUPLEX	561400320	All models	
8	Spacer	562500200	All models	
9	Upper bracket DOL/SD	561400380	All models	
*10	Thrust bearing bracket	561400410	All models	
11	Bottom cover	564200170	All models	
*13	Upper/lower bush bearing 4 - 22 kW	-	All models	
*14	Upper/lower bush bearing 26 - 37 kW	562590060	All models, N. 4	
15	Sand guard EPDM	168561020	All models	
16	Release valve 316SS NBR	549300080	All models	
17	Filling plug DUPLEX	540500030	All models	
18	Cable gland gasket EPDM	568560290	All models	
19	Thrust bearing kit 26 - 37 kW	5KL41AAD	All models	
(*)	Bush bearings chromate	5KL35AAE	FOR REPAIR ONLY	

6	Stator assy DOL	code 540660500	540660510	540643880
	Stator assy SD	code 540660505	540660515	540643885
12	Rotor shaft 420SS	code 555082400	555082410	555082420

PVC Winding Wire				
		400-3-50 DOL		
Wire Code		573325812	573325813	573325844
Wire Type		D1,6/2,4	D1,7/2,5	D1,8/2,6
Tot wire need [m]		300	285	305*
		400/690-3-50 SD		
Wire Code		573325812	573325813	573325844
Wire Type		D1,6/2,4	D1,7/2,5	D1,8/2,6
Tot wire need [m]		300	285	305*
* Wire HT/HD instead of PVC				
In case of order, the quantity delivered will depend from the coil currently available.				

Flat Power cable H07BB-F ACS approved				
		400-3-50 DOL		
Cable code		572850962	572850964	572850964
Section (mm2)		4G6	4G10	4G10
		400/690-3-50 SD		
Cable code		572850910	572850910	572850910
Section (mm2)		3X4	3X4	3X4
Cable code		572850960	572850960	572850960
Section (mm2)		4G4	4G4	4G4
Codes are referred to 1 m of cable				

Special Versions				
1	Kit cable glands FPM	5KL30ABH	All models	
	Kit cable glands FPM from BEGIN 2010	5KL30ABQ	All models cable 4G10	
*3	Seals kit EPDM	5KL02AAE	All models	
	Seals kit FPM	5KL02AAF	All models	
*5	Kit MECH D28 / Flange SIC/SIC/NBR	5KL01AAQ	All models	
	Kit MECH D28 / Flange SIC/SIC/FPM	5KL01AAR	All models	
15	Sand guard FPM	168561021	All models	
16	Release valve A316 FPM	549300071	All models	
17	Plug DUPLEX for PT100	540500040	All models	
18	Cable gland gasket FPM	568560291	All models	

(*) = WARNING. These parts replacement requires an Authorized Service.

L6WR/A HT 6" Submersible Motors High Temperature

L6WR		40T405/A	55T405/A	75T405/A	93T405/A	110T405/A	130T405/A	150T405/A	185T405/A
3Ph 400V 50Hz DOL HT	code	507072020		507072040		507072060		507072080	507072090
L6WR		-	55T405/A	75T405/A	93T405/A	110T405/A	130T405/A	150T405/A	185T405/A
3Ph 400/690V 50Hz SD HT	code								
	kW	4	5,5	7,5	9,3	11	13	15	18,5

1	Kit cable glands EPDM	5KL30ABG	All models
2	Thrust bearing kit 4 - 22 kW	5KL41AAC	All models
*3	Seals kit NBR	5KL02AAD	All models
4	Screws kit	5KL40AAF	All models
*5	Kit seals / Flange CER/CARB/NBR - DUPLEX	5KL01AAP	All models
7	Lower support DUPLEX	561400290	All models
8	Spacer	562500200	All models
9	Upper bracket DOL / SD	561400350	All models
*10	Thrust bearing bracket	561400410	All models
11	Bottom cover	564200170	All models
*13	Upper/lower bush bearing 4 - 22 kW	562590010	All models, N. 2
*14	Upper/lower bush bearing 26 - 37 kW	-	All models
15	Sand guard EPDM	168561020	All models
16	Release valve A316 NBR	549300080	All models
17	Filling plug A316 EPDM	540500030	All models
18	Cable gland gasket EPDM	568560290	All models
19	Thrust bearing kit 26 - 37 kW	-	All models
(*)	Bush bearings chromate	5KL35AAD	All models FOR REPAIR ONLY

6	Stator assy DOL HT	code	54066042B	54066044B	54066046B	54066048B	54066049B
	Stator assy SD HT						
12	Rotor shaft HT DUPLEX	code	555082320	555082340	555082360	555082380	555082390

HT/HD Winding Wire							
400-3-50 DOL							
Wire Code	573325333		573325336		573325338		573325342
Wire Type	D0,7/1,7		D1,0/2,0		D1,2/2,2		D1,6/2,6
Tot wire need [m]	270		235		215		195
400/690-3-50 SD							
Wire Code							
Wire Type							
Tot wire need [m]							
In case of order, the quantity delivered will depend from the coil currently available.							

Flat Power cable H07BB-F ACS approved							
400-3-50 DOL							
Cable code	572850960		572850960		572850960		572850962
Section (mm2)	4G4		4G4		4G4		4G6
400/690-3-50 SD							
Cable code							
Section (mm2)							
Cable code							
Section (mm2)							
Codes are referred to 1 m of cable							

Special Versions			
1	Kit cable glands FPM	5KL30ABH	All models
*3	Seals kit EPDM	5KL02AAE	All models
	Seals kit FPM	5KL02AAF	All models
*5	Kit MECH D28 / Flange SIC/SIC/NBR	5KL01AAQ	All models
	Kit MECH D28 / Flange SIC/SIC/FPM	5KL01AAR	All models
15	Sand guard FPM	168561021	All models
16	Release valve FPM	549300071	All models
17	Plug DUPLEX for PT100	540500040	All models
18	Cable gland gasket FPM	568560291	All models

(*) = WARNING. These parts replacement requires an Authorized Service.

L6WR/A HT 6" Submersible Motors High Temperature

L6WR		220T405/A	260T405/A	300T405/A
3Ph 400V 50Hz DOL HT	code	507072100		507072120
L6WR		220T405/A	260T405/A	300T405/A
3Ph 400/690V 50Hz SD HT	code			
	kW	22	26	30

1	Kit cable glands EPDM	5KL30ABG	All models
	Kit cable glands EPDM from BEGIN 2010	5KL30ABP	All models cable 4G10
2	Thrust bearing kit	-	All models
*3	Seals kit NBR	5KL02AAD	All models
4	Screws kit	5KL40AAF	All models
*5	Kit seals / Flange CER/CARB/NBR - DUPLEX	5KL01AAP	All models
7	Lower support DUPLEX	561400320	All models
8	Spacer	562500200	All models
9	Upper bracket DOL/SD	561400380	All models
10	Thrust bearing bracket	561400410	All models
11	Bottom cover	564200170	All models
*13	Upper/lower bush bearing 4 - 22 kW	-	All models
*14	Upper/lower bush bearing 26 - 37 kW	562590060	All models, N. 4
15	Sand guard EPDM	168561020	All models
16	Release valve 316SS NBR	549300080	All models
17	Filling plug DUPLEX	540500030	All models
18	Cable gland gasket EPDM	568560290	All models
*19	Thrust bearing kit 26 - 37 kW	5KL41AAD	All models
(*)	Bush bearings chromate	5KL35AAE	FOR REPAIR ONLY

6	Stator assy DOL HT	code	54066050B		54064388B
	Stator assy SD HT				
12	Rotor shaft 420SS	code	555082400		555082120

HT/HD Winding Wire			
		400-3-50 DOL HT	
Wire Code		573325840	573325844
Wire Type		D1,4/2,4	D1,8/2,8
Tot wire need [m]		300	310
		400/690-3-50 SD HT	
Wire Code			
Wire Type			
Tot wire need [m]			
In case of order, the quantity delivered will depend from the coil currently available.			

Flat Power cable H07BB-F ACS approved			
		400-3-50 DOL	
Cable code		572850962	572850964
Section (mm2)		4G6	4G10
		400/690-3-50 SD	
Cable code			
Section (mm2)			
Cable code			
Section (mm2)			
Codes are referred to 1 m of cable			

Special Versions			
1	Kit cable glands FPM	5KL30ABH	All models
	Kit cable glands FPM from BEGIN 2010	5KL30ABQ	All models cable 4G10
*3	Seals kit EPDM	5KL02AAE	All models
	Seals kit FPM	5KL02AAF	All models
*5	Kit MECH D28 / Flange SIC/SIC/NBR	5KL01AAQ	All models
	Kit MECH D28 / Flange SIC/SIC/FPM	5KL01AAR	All models
15	Sand guard FPM	168561021	All models
16	Release valve FPM	549300071	All models
17	Plug DUPLEX for PT100	540500040	All models
18	Cable gland gasket FPM	568560291	All models

(*) = WARNING. These parts replacement requires an Authorized Service.