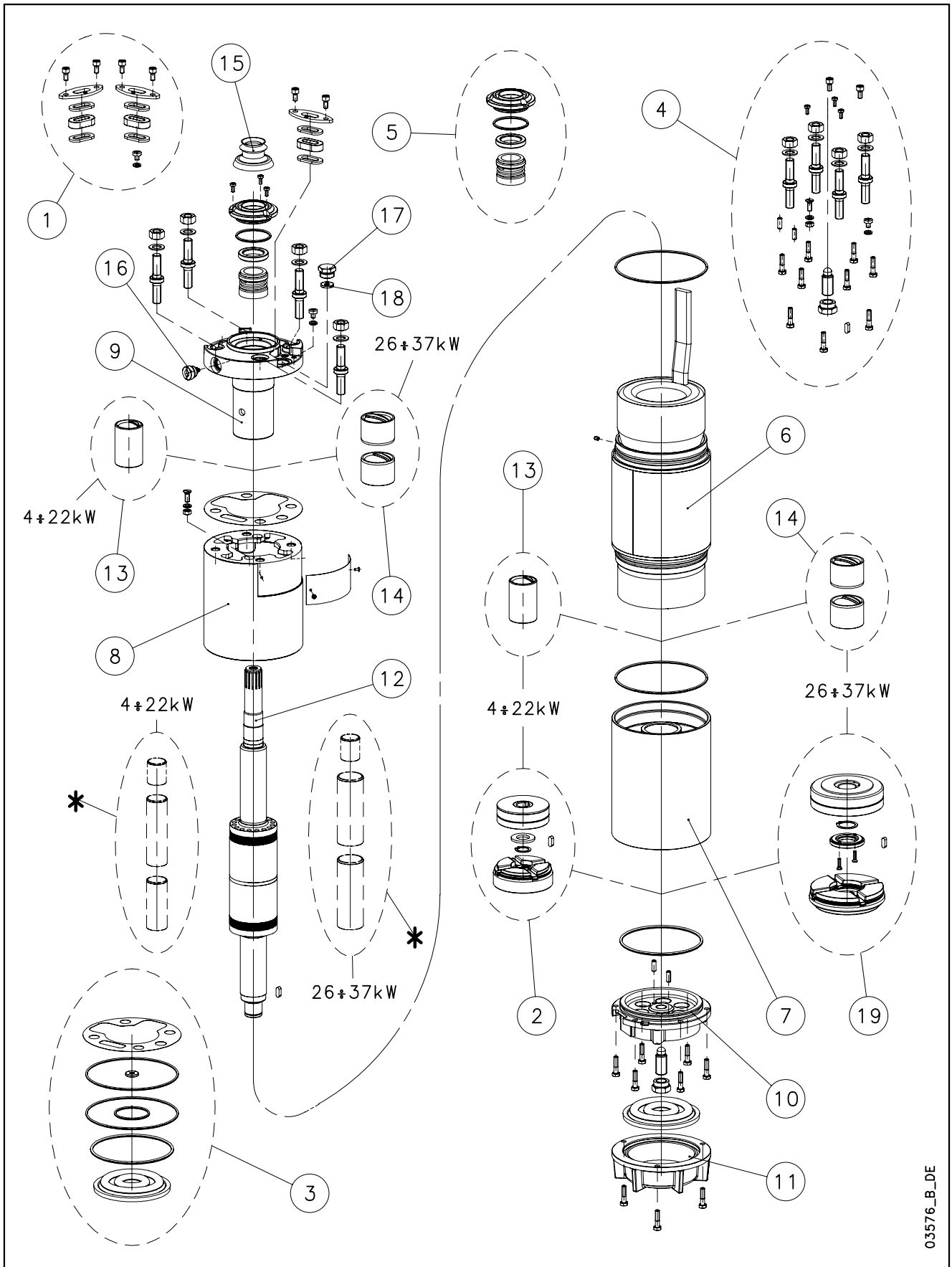


## L6W-L6W HT/A - CP6W-CP6W HT/A



03576\_B\_DE

N.	Descrizione it	Description en	Description fr	Beschreibung de	Descripción es	Descrição pt
1	Kit pressacavi	Kit cable glands	Kit press étoupes	Kabelverschraubungensatz	Kit sujetascable	Kit pressacabos
2	Kit reggispinta completo da 4 a 22 kW	Thrust bearing kit complete from 4 to 22 kW	Kit palier de butée complet de 4 à 22 kW	Drucklagerbausatz komplet von 4 bis 22 kW	Kit cojinete de empuje completo de 4 a 22 kW	Kit Apoios completo de 4 a 22 kW
3	Kit guarnizioni	Seals kit	Kit Garnitures	Bausatz Dichtungen	Kit juntas	Kit guarnições
4	Kit Viterie	Screws kit	Kit Visserie	Bausatz Schrauben	Kit tornillos	Kit parafusos
5	Kit tenuta/Flangia	Kit seals / Flange	Kit garnitures / Bride	Bausatz dichtungen / Flansch	Kit juntas / Brida	Kit Empanque/Flange
6	Statore completo	Stator assy	Stator complet	Stator komplet	Estator completo	Estator complet
7	Supporto inferiore	Lower support	Support inférieur	Untere Lagerung	Soporte inferior	Suporte inferior
8	Distanziale	Spacer	Entretoise	Distanzstück	Distanciador	Distanciador
9	Supporto superiore	Upper bracket	Support supérieur	Obere Lagerung	Soporte superior	Suporte superior
10	Supporto kit reggispinta	Thrust bearing bracket kit	Support kit palier de butée	Drucklagergehäuse	Soporte kit cojinete de empuje	Suporte Kit Apoios
11	Fondello diaframma	Bottom cover diaphragm	Couvercle inférieur soufflet	Untere Abdeckung Blasebalg	Tapa inferior de sujeta	Tampa inferior do fole
12	Albero rotore	Rotor shaft	Arbre rotor	Rotorwelle	Árbol rotor	Veio rotor
13	Boccola cuscinetto sup./inf. da 4 a 22kW	Upper/lower bush bearing from 4 to 22 kW	Roulement à douille supérieur/inférieur de 4 à 22 kW	Obere / Untere buchsenslager von 4 bis 22 kW	Cojinete de casquillo superior -inferior de 4 a 22 kW	Rolamento em bucha superior-inferior de 4 a 22 kW
14	Boccola cuscinetto sup./inf. da 26 a 37kW	Upper/lower bush bearing from 26 to 37 kW	Roulement à douille supérieur/inférieur de 26 à 37 kW	Obere / Untere buchsenslager von 26 bis 37 kW	Cojinete de casquillo superior- inferior de 26 a 37 kW	Rolamento em bucha superior-inferior de 26 a 37 kW
15	Parasabbia	Sand guard	Anti-sable	Sandschutz	Protección de arena	Protecção Vedante
16	Valvola sfiato	Relief valve	Soupape de Purge	Ablassventil	Valvula de purga	Válvula
17	Tappo riempimento	Filling plug	Bouchon de remplissage	Füllstoff-Stecker	Tapón de llenado	Bujão
18	Guarnizione pressacavo	Cable gland gasket	Joint de press étoupe	Kabelverschraubungen Dichtung	Junta sujetacable	O-ring pressacabo
19	Kit reggispinta completo da 26 a 37 kW	Thrust bearing kit complete from 26 to 37 kW	Kit palier de butée complet de 26 à 37 kW	Drucklagerbausatz komplet von 26 bis 37 kW	Kit cojinete de empuje completo de 26 a 37 kW	Kit Apoios completo de 26 a 37 kW
*	Solo per riparazioni	For repair only	Pour réparations seulement	Nur für die Reparatur	Sólo para la reparación	Para o reparo unicamente
N.	Beschrijving nl	Περιγραφή el	Açıklama tr	Kuvaus fi	Описание ru	Opis pl
1	Kabelklem set	Σετ σφικτήρων καλωδίων	Kablo bez kiti	Kaapelinpuristinsarja	Комплект каб.уплотнителей	Zestaw mocowania kabla
2	Complete druklager set van 4 tot 22 kW	Πλήρες σετ ωπτικού ρουλεμάν 4 - 22 kW	Komple ayar pulu kiti 4 - 22 kW	Täydellinen painelaakerisarja 4-22 kW	Полный комплект упорного подшипника от 4 до 22 кВт	Kompletny zestaw łożyska ciernego od 4 do 22 kW
3	Kit met dichtingen	Σετ τοιμοχών	Conta kiti	Tiivistesarja	КОМПЛЕКТ прокладок	ZESTAW Uszczelek
4	Kit met schroeven	Σετ βιδών	Vida kiti	Ruuvisarja	КОМПЛЕКТ винтов	ZESTAW wkręty
5	Mechanische afdichting/Flens	Σετ ανοχών στεγανότητας/Φλάντζας	Mekanik conta / Flanş	Tiivistesarja / Laippa	КОМПЛЕКТ прокладок/фланца	Zestaw łożysko tulejowe
6	Stator compleet	Πλήρης στάτορας	Statör tamamı	Täydellinen staattori	Статор полный	Stator
7	Onderste steun	Κάτω φορέας	Alt segman braket	Alatuki	Нижняя опора	Dolny wspornik
8	Afstandsstuk	Αποστάσεων	Ara halkası	Välilevy	Распорная	Część dystansowa
9	Bovenste steun	Επάνω φορέας	Ust braket	Ylätuki	Верхняя опора	Górny wspornik
10	Steun druklager kit	Φορέας σετ ωπτικού ρουλεμάν	Bindirme yatađı kiti desteđi	Painelaakerisarjan tuki	Опора комплекта упорного подшипника	Wspornik zestawu łożyska wzduźnego
11	Bedekking onderkant de membraan	Κάλυμμα διαφράγματος	Zeminlemek kapađı Diyafram	Alaosan, kalvo	диафрагма основания крышка	Dolna pokrywa Ko nierz
12	Rotoras	Άξονας στροφείου	Rotor mili	Roottorin akseli	ось ротора	Wałek (z rotorem)
13	Bovenste/Onderste Bus van 4 tot 22 kW	Κορυφή / Κάτω ένασφαιρου ρουλεμάν 4 - 22 kW	Burç yatađı üstteki / alt 4-22 kW	Holkilaakeri ylempi / alempi 4-22 kW	Подшипник со втулкой верхне-низко от 4 до 22 кВт	łożysko tulejowe wyższy / obniźač od 4 do 22 kW
14	Bovenste/Onderste Bus van 26 tot 37 kW	Κορυφή / Κάτω ένασφαιρου ρουλεμάν 26 - 37 kW	Burç yatađı üstteki / alt 26-37 kW	Holkilaakeri ylempi / alempi 26-37 kW	Подшипник со втулкой верхне-низко от 26 до 37 кВт	łożysko tulejowe wyższy / obniźač od 26 do 37 kW
15	Beschermkap	Προστατευτικό άμμου	Kum sizintisi önleme	Hiekkasuoja	Защита от песка	Ochrona przeciw-piaskowa
16	Ontluchtingsventiel	Βαλβίδα εξαερισμού	Tahliye valfi	Paineenrajoitusventtiili	Редукционный клапан	Zawór odpowietrzający
17	Vulplug	Πώμα πλήρωσης	Şarj fişı	Täyttötulppa	Пробка заполнения	Korek zalewowy
18	Kabelklem pakking	Περίβλημα σφικτήρα καλωδίων	Kablo bez contası	Kaapelinpuristimen tiiviste	Прокладка уплотнителей кабеля	Uszczelniaç kabla
19	Complete druklager set van 26 tot 37 kW	Πλήρες σετ ωπτικού ρουλεμάν 26 - 37 kW	Komple ayar pulu kiti 26 - 37 kW	Täydellinen painelaakerisarja 26-37 kW	Полный комплект упорного подшипника от 26 до 37 кВт	Kompletny zestaw łożyska ciernego od 26 do 37 kW
*	Alleen voor reparatie	επισκευή μόνο	Için tamir sadece	Korjattavaksi vain	для ремонт только	Do naprawy tylko

## L6WN/A 6" Submersible Motors

L6WN		40T405/A	55T405/A	75T405/A	93T405/A	110T405/A	130T405/A	150T405/A	185T405/A	220T405/A
3Ph 400V 50Hz DOL	code	507051310	507051320	507051330	507051340	507051350	507051360	507051370	507051380	507051390
L6WN		-	55T405/A	75T405/A	93T405/A	110T405/A	130T405/A	150T405/A	185T405/A	220T405/A
3Ph 400/690V 50Hz SD	code	-	507051325	507051335	507051345	507051355	507051365	507051375	507051385	507051395
	kW	4	5,5	7,5	9,3	11	13	15	18,5	22

1	Kit cable glands EPDM	5KL30ABE	All models							
*2	Thrust bearing kit 4 - 22 kW	5KL41AAC	All models							
*3	Seals kit NBR	5KL02AAD	All models							
4	Screws kit	5KL40AAE	All models							
*5	Kit MECH D28 / Flange CER/CARB/FPM - A31	5KL01AAL	All models							
7	Lower support cast iron	561400280	All models							
8	Spacer	562500190	All models							
9	Upper bracket DOL / SD	561400340	All models							
10	Thrust bearing bracket	561400400	All models							
11	Bottom cover	564200160	All models							
*13	Upper/lower bush bearing 4 - 22 kW	562590010	All models, N. 2							
*14	Upper/lower bush bearing 26 - 37 kW	-	All models							
15	Sand guard EPDM	168561020	All models							
16	Release valve A316 NBR	549300070	All models							
17	Filling plug A316 EPDM	540500010	All models							
18	Cable gland gasket EPDM	568560290	All models							
19	Thrust bearing kit 26 - 37 kW	-	All models							
(*)	Bush bearings chromate	5KL35AAD	All models <b>FOR REPAIR ONLY</b>							

6	Stator assy DOL	code	540660210	540660220	540660230	540660240	540660250	540660260	540660270	540660280	540660290
	Stator assy SD		-	540660225	540660235	540660245	540660255	540660265	540660275	540660285	540660295
12	Rotor shaft DUPLEX	code	555082310	555082320	555082330	555082340	555082350	555082360	555082370	555082380	555082390

PVC Winding Wire										
400-3-50 DOL										
Wire Code	573325804	573325806	573325807	573325808	573325809	573325810	573325812	573325814	573325814	573325814
Wire Type	D0,8/1,5	D1,0/1,7	D1,1/1,8	D1,2/1,9	D1,3/2,1	D1,4/2,2	D1,6/2,4	D1,8/2,6	D1,8/2,6	D1,8/2,6
Tot wire need [m]	315	275	255	240	225	215	205	195	195	180
400/690-3-50 SD										
Wire Code	-	573325302	573325803	573325804	573325806	573325807	573325808	573325809	573325812	573325812
Wire Type	-	D0,65/1,3	D0,7/1,4	D0,8/1,5	D1,0/1,7	D1,1/1,8	D1,2/1,9	D1,3/2,1	D1,3/2,1	D1,6/2,4
Tot wire need [m]	-	440	405	395	370	340	340	315	315	310
In case of order, the quantity delivered will depend from the coil currently available.										

Flat Power cable H07BB-F ACS approved										
400-3-50 DOL										
Cable code	572850960	572850960	572850960	572850960	572850960	572850960	572850960	572850962	572850962	572850962
Section (mm2)	4G4	4G4	4G4	4G4	4G4	4G4	4G4	4G6	4G6	4G6
400/690-3-50 SD										
Cable code	-	572850910	572850910	572850910	572850910	572850910	572850910	572850910	572850910	572850910
Section (mm2)	-	3X4	3X4	3X4	3X4	3X4	3X4	3X4	3X4	3X4
Cable code	-	572850960	572850960	572850960	572850960	572850960	572850960	572850960	572850960	572850960
Section (mm2)	-	4G4	4G4	4G4	4G4	4G4	4G4	4G4	4G4	4G4
Codes are referred to 1 m of cable										

Special Versions			
1	Kit cable glands FPM	5KL30ABF	All models
*3	Seals kit EPDM	5KL02AAE	All models
	Seals kit FPM	5KL02AAF	All models
*5	Kit MECH D28 / Flange SIC/SIC/NBR	5KL01AAM	All models
	Kit MECH D28 / Flange SIC/SIC/FPM	5KL01AAN	All models
15	Sand guard FPM	168561021	All models
16	Release valve A316 FPM	549300071	All models
17	Plug for PT100	540500020	All models
18	Cable gland gasket FPM	568560291	All models

(\*) = WARNING. These parts replacement requires an Authorized Service.

## L6WN/A 6" Submersible Motors

<b>L6WN</b> 3Ph 400V 50Hz <b>DOL</b>	code	<b>260T405/A</b> 507051400	<b>300T405/A</b> 507051410	<b>370T405/A</b> 507051420
<b>L6WN</b> 3Ph 400/690V 50Hz <b>SD</b>	code	<b>260T405/A</b> 507051405	<b>300T405/A</b> 507051415	<b>370T405/A</b> 507051425
	kW	26	30	37

1	Kit cable glands EPDM	5KL30ABE	All models	
	Kit cable glands EPDM from BEGIN 2010	5KL30ABM	All models cable 4G10	
2	Thrust bearing kit 4 - 22 kW	-	All models	
*3	Seals kit NBR	5KL02AAD	All models	
4	Screws kit	5KL40AAE	All models	
*5	Kit MECH D28 / Flange CER/CARB/FPM - A31	5KL01AAL	All models	
7	Lower support cast iron	561400310	All models	
8	Spacer	562500190	All models	
9	Upper bracket DOL	561400370	All models	
	Upper bracket SD	561450360	All models	
10	Thrust bearing bracket	561400400	All models	
11	Bottom cover	564200160	All models	
*13	Upper/lower bush bearing 4 - 22 kW	-	All models	
*14	Upper/lower bush bearing 26 - 37 kW	562590060	All models, N. 4	
15	Sand guard EPDM	168561020	All models	
16	Release valve A316 NBR	549300070	All models	
17	Filling plug A316 EPDM	540500010	All models	
18	Cable gland gasket EPDM	568560290	All models	
*19	Thrust bearing kit 26 - 37 kW	5KL41AAD	All models	
(*)	Bush bearings chromate	5KL35AAE	<b>FOR REPAIR ONLY</b>	

6	Stator assy DOL	code	540660300	540660310	540643870
	Stator assy SD		540660305	540660315	540643875
12	Rotor shaft DUPLEX	code	555082400	555082410	555082420

PVC Winding Wire			
<b>400-3-50 DOL</b>			
Wire Code	573325812	573325813	573325844
Wire Type	D1,6/2,4	D1,7/2,5	D1,8/2,6
Tot wire need [m]	300	285	305*
<b>400/690-3-50 SD</b>			
Wire Code	573325812	573325813	573325844
Wire Type	D1,6/2,4	D1,7/2,5	D1,8/2,6
Tot wire need [m]	300	285	305*
* Wire HT/HD instead of PVC			
In case of order, the quantity delivered will depend from the coil currently available.			

Flat Power cable H07BB-F ACS approved			
<b>400-3-50 DOL</b>			
Cable code	572850962	572850964	572850964
Section (mm2)	4G6	4G10	4G10
<b>400/690-3-50 SD</b>			
Cable code	572850910	572850910	572850910
Section (mm2)	3X4	3X4	3X4
Cable code	572850960	572850960	572850960
Section (mm2)	4G4	4G4	4G4
Codes are referred to 1 m of cable			

Special Versions			
1	Kit cable glands FPM	5KL30ABF	All models
	Kit cable glands EPDM from BEGIN 2010	5KL30ABN	All models cable 4G10
*3	Seals kit EPDM	5KL02AAE	All models
	Seals kit FPM	5KL02AAF	All models
*5	Kit MECH D28 / Flange SIC/SIC/NBR	5KL01AAM	All models
	Kit MECH D28 / Flange SIC/SIC/FPM	5KL01AAN	All models
15	Sand guard FPM	168561021	All models
16	Release valve A316 FPM	549300071	All models
17	Plug for PT100	540500020	All models
18	Cable gland gasket FPM	568560291	All models

(\*) = WARNING. These parts replacement requires an Authorized Service.

\* Recommended spare parts - Parti di ricambio consigliate  
\* Pièces détachées conseillées - Empfohlene Ersatzteile

L6WN\_A\_5\_Mar08\_EdF

## L6WN/A 6" Submersible Motors

L6WN 3Ph 400V 50Hz DOL	code	40T235/A	55T235/A	75T235/A	93T235/A	110T235/A	130T235/A	150T235/A	185T235/A	220T235/A
L6WN 3Ph 400/690V 50Hz SD	code	-	55T235/A	75T235/A	93T235/A	110T235/A	130T235/A	150T235/A	507051381	220T235/A
	kW	4	5,5	7,5	9,3	11	13	15	18,5	22

1	Kit cable glands EPDM	5KL30ABE	All models							
*2	Thrust bearing kit 4 - 22 kW	5KL41AAC	All models							
*3	Seals kit NBR	5KL02AAD	All models							
4	Screws kit	5KL40AAE	All models							
*5	Kit MECH D28 / Flange CER/CARB/FPM - A31	5KL01AAL	All models							
7	Lower support cast iron	561400280	All models							
8	Spacer	562500190	All models							
9	Upper bracket DOL / SD	561400340	All models							
10	Thrust bearing bracket	561400400	All models							
11	Bottom cover	564200160	All models							
*13	Upper/lower bush bearing 4 - 22 kW	562590010	All models, N. 2							
*14	Upper/lower bush bearing 26 - 37 kW	-	All models							
15	Sand guard EPDM	168561020	All models							
16	Release valve A316 NBR	549300070	All models							
17	Filling plug A316 EPDM	540500010	All models							
18	Cable gland gasket EPDM	568560290	All models							
19	Thrust bearing kit 26 - 37 kW	-	All models							
(*)	Bush bearings chromate	5KL35AAD	All models <b>FOR REPAIR ONLY</b>							

6	Stator assy DOL	code							540660281	
	Stator assy SD		-							
12	Rotor shaft DUPLEX	code	555082310	555082320	555082330	555082340	555082350	555082360	555082370	555082380 555082390

PVC Winding Wire										
<b>230-3-50 DOL</b>										
Wire Code										573325814
Wire Type										D1.8/2,6
Tot wire need [m]										195
<b>230/400-3-50 SD</b>										
Wire Code										
Wire Type										
Tot wire need [m]										
In case of order, the quantity delivered will depend from the coil currently available.										

Flat Power cable H07BB-F ACS approved										
<b>230-3-50 DOL</b>										
Cable code	572850960	572850960	572850960	572850960	572850960	572850960	572850962	572850964	572850964	572850964
Section (mm2)	4G4	4G4	4G4	4G4	4G4	4G4	4G6	4G10	4G10	4G10
<b>230/400-3-50 SD</b>										
Cable code	572850910	572850910	572850910	572850910	572850910	572850910	572850910	572850910	572850910	572850910
Section (mm2)	3X4	3X4	3X4	3X4	3X4	3X4	3X4	3X4	3X4	3X4
Cable code	572850960	572850960	572850960	572850960	572850960	572850960	572850960	572850960	572850960	572850960
Section (mm2)	4G4	4G4	4G4	4G4	4G4	4G4	4G4	4G4	4G4	4G4
Codes are referred to 1 m of cable										

Special Versions										
1	Kit cable glands FPM	5KL30ABF	All models							
*3	Seals kit EPDM	5KL02AAE	All models							
	Seals kit FPM	5KL02AAF	All models							
*5	Kit MECH D28 / Flange SIC/SIC/NBR	5KL01AAM	All models							
	Kit MECH D28 / Flange SIC/SIC/FPM	5KL01AAN	All models							
15	Sand guard FPM	168561021	All models							
16	Release valve A316 FPM	549300071	All models							
17	Plug for PT100	540500020	All models							
18	Cable gland gasket FPM	568560291	All models							

(\*) = WARNING. These parts replacement requires an Authorized Service.

## L6WN/A 6" Submersible Motors

<b>L6WN</b>		<b>260T235/A</b>	<b>300T235/A</b>	<b>370T235/A</b>
3Ph 400V 50Hz <b>DOL</b>	code			
<b>L6WN</b>		<b>260T235/A</b>	<b>300T235/A</b>	<b>370T235/A</b>
3Ph 400/690V 50Hz <b>SD</b>	code			
	kW	26	30	37

1	Kit cable glands EPDM	5KL30ABE	All models	
	Kit cable glands EPDM from BEGIN 2010	5KL30ABM	All models cable 4G10	
2	Thrust bearing kit 4 - 22 kW	-	All models	
*3	Seals kit NBR	5KL02AAD	All models	
4	Screws kit	5KL40AAE	All models	
*5	Kit MECH D28 / Flange CER/CARB/FPM - A31	5KL01AAL	All models	
7	Lower support cast iron	561400310	All models	
8	Spacer	562500190	All models	
9	Upper bracket DOL	561400370	All models	
	Upper bracket SD	561450360	All models	
10	Thrust bearing bracket	561400400	All models	
11	Bottom cover	564200160	All models	
*13	Upper/lower bush bearing 4 - 22 kW	-	All models	
*14	Upper/lower bush bearing 26 - 37 kW	562590060	All models, N. 4	
15	Sand guard EPDM	168561020	All models	
16	Release valve A316 NBR	549300070	All models	
17	Filling plug A316 EPDM	540500010	All models	
18	Cable gland gasket EPDM	568560290	All models	
*19	Thrust bearing kit 26 - 37 kW	5KL41AAD	All models	
(*)	Bush bearings chromate	5KL35AAE	<b>FOR REPAIR ONLY</b>	

6	Stator assy DOL	code			
	Stator assy SD				
12	Rotor shaft DUPLEX	code	555082400	555082410	555082420

PVC Winding Wire					
		<b>230-3-50 DOL</b>			
Wire Code					
Wire Type					
Tot wire need [m]					
		<b>230/400-3-50 SD</b>			
Wire Code					
Wire Type					
Tot wire need [m]					
* Wire HT/HD instead of PVC					
In case of order, the quantity delivered will depend from the coil currently available.					

Flat Power cable H07BB-F ACS approved					
		<b>230-3-50 DOL</b>			
Cable code					
Section (mm2)					
		<b>230/400-3-50 SD</b>			
Cable code			572850914		
Section (mm2)			3X10		
Cable code			572850964		
Section (mm2)			4G10		
Codes are referred to 1 m of cable					

Special Versions			
1	Kit cable glands FPM	5KL30ABF	All models
	Kit cable glands EPDM from BEGIN 2010	5KL30ABN	All models cable 4G10
*3	Seals kit EPDM	5KL02AAE	All models
	Seals kit FPM	5KL02AAF	All models
*5	Kit MECH D28 / Flange SIC/SIC/NBR	5KL01AAM	All models
	Kit MECH D28 / Flange SIC/SIC/FPM	5KL01AAN	All models
15	Sand guard FPM	168561021	All models
16	Release valve A316 FPM	549300071	All models
17	Plug for PT100	540500020	All models
18	Cable gland gasket FPM	568560291	All models

(\*) = WARNING. These parts replacement requires an Authorized Service.

\* Recommended spare parts - Parti di ricambio consigliate  
\* Pièces détachées conseillées - Empfohlene Ersatzteile

L6WN\_A\_5\_Mar08\_EdF

## L6WN/A HT 6" Submersible Motors High Temperature

L6WN	40T405/A	55T405/A	75T405/A	93T405/A	110T405/A	130T405/A	150T405/A	185T405/A	
3Ph 400V 50Hz DOL HT	code 507071320	507071330	507071340	507071350	507071360	507071370	507071380	507071390	
L6WN	55T405/A	75T405/A	93T405/A	110T405/A	130T405/A	150T405/A	185T405/A		
3Ph 400/690V 50Hz SD HT	code			507071355	507071375	507071385	507071395		
	kW	4	5,5	7,5	9,3	11	13	15	18,5

1	Kit cable glands EPDM	5KL30ABE	All models
*2	Thrust bearing kit 4 - 22 kW	5KL41AAC	All models
*3	Seals kit NBR	5KL02AAD	All models
4	Screws kit	5KL40AAE	All models
*5	Kit MECH D28 / Flange CER/CARB/FPM - A31	5KL01AAL	All models
7	Lower support cast iron	561400280	All models
8	Spacer	562500190	All models
9	Upper bracket DOL / SD	561400340	All models
10	Thrust bearing bracket	561400400	All models
11	Bottom cover	564200160	All models
*13	Upper/lower bush bearing 4 - 22 kW	562590010	All models, N. 2
*14	Upper/lower bush bearing 26 - 37 kW	-	All models
15	Sand guard EPDM	168561020	All models
16	Release valve A316 NBR	549300070	All models
17	Filling plug A316 EPDM	540500010	All models
18	Cable gland gasket EPDM	568560290	All models
19	Thrust bearing kit 26 - 37 kW	-	All models
(*)	Bush bearings chromate	5KL35AAD	All models FOR REPAIR ONLY

6	Stator assy DOL HT	code 54066022B	54066023B	54066024B	54066025B	54066026B	54066027B	54066028B	54066029B
	Stator assy SD HT				54066025D		54066027D	54066028D	54066029D
12	Rotor shaft HT DUPLX	code 555082320	555082330	555082340	555082350	555082360	555082370	555082380	555082390

HT/HD Winding Wire		400-3-50 DOL							
Wire Code		573325333	573325334	573325336	573325337	573325338	573325840	573325842	573325842
Wire Type		D0,7/1,7	D0,8/1,8	D1,0/2,0	D1,1/2,1	D1,2/2,2	D1,4/2,4	D1,6/2,6	D1,6/2,6
Tot wire need [m]		270	240	235	220	205	205	185	175
		400/690-3-50 SD							
Wire Code					573325333		573325335	573325337	573325337
Wire Type					D0,7/1,7		D0,9/1,9	D1,1/2,1	D1,1/2,1
Tot wire need [m]					380		350	325	315

In case of order, the quantity delivered will depend from the coil currently available.

Flat Power cable H07BB-F ACS approved		400-3-50 DOL							
Cable code		572850960	572850960	572850960	572850960	572850960	572850960	572850962	572850962
Section (mm2)		4G4	4G4	4G4	4G4	4G4	4G4	4G6	4G6
		400/690-3-50 SD							
Cable code					572850910		572850910	572850910	572850910
Section (mm2)					3X4		3X4	3X4	3X4
Cable code					572850960		572850960	572850960	572850960
Section (mm2)					4G4		4G4	4G4	4G4

Codes are referred to 1 m of cable

Special Versions		
1	Kit cable glands FPM	5KL30ABF All models
*3	Seals kit EPDM	5KL02AAE All models
	Seals kit FPM	5KL02AAF All models
*5	Kit MECH D28 / Flange SIC/SIC/NBR	5KL01AAM All models
	Kit MECH D28 / Flange SIC/SIC/FPM	5KL01AAN All models
15	Sand guard FPM	168561021 All models
16	Release valve A316 FPM	549300071 All models
17	Plug for PT100	540500020 All models
18	Cable gland gasket FPM	568560291 All models

(\*) = WARNING. These parts replacement requires an Authorized Service.

## L6WN/A HT 6" Submersible Motors High Temperature

<b>L6WN</b>	<b>220T405/A</b>	<b>260T405/A</b>	<b>300T405/A</b>
3Ph 400V 50Hz DOL HT	code 507071400	507071410	507071420
<b>L6WN</b>	<b>220T405/A</b>	<b>260T405/A</b>	<b>300T405/A</b>
3Ph 400/690V 50Hz SD HT	code 507071405	507071415	507071425
	kW	22	26
			30

1	Kit cable glands EPDM	5KL30ABE	All models
	Kit cable glands EPDM from BEGIN 2010	5KL30ABM	All models cable 4G10
*2	Thrust bearing kit 4 - 22 kW	-	All models
*3	Seals kit NBR	5KL02AAD	All models
4	Screws kit	5KL40AAE	All models
*5	Kit MECH D28 / Flange CER/CARB/FPM - A31	5KL01AAL	All models
7	Lower support cast iron	561400310	All models
8	Spacer	562500190	All models
9	Upper bracket DOL	561400370	All models
	Upper bracket SD	561450360	All models
10	Thrust bearing bracket	561400400	All models
11	Bottom cover	564200160	All models
*13	Upper/lower bush bearing 4 - 22 kW	-	All models
*14	Upper/lower bush bearing 26 - 37 kW	562590060	All models, N. 4
15	Sand guard EPDM	168561020	All models
16	Release valve A316 NBR	549300070	All models
17	Filling plug A316 EPDM	540500010	All models
18	Cable gland gasket EPDM	568560290	All models
19	Thrust bearing kit 26 - 37 kW	5KL41AAD	All models
(*)	Bush bearings chromate	5KL35AAE	<b>FOR REPAIR ONLY</b>

6	Stator assy DOL HT	code 54066030B	54066031B	54064387B
	Stator assy SD HT	54066030D	54066031D	54064387D
12	Rotor shaft DUPLEX	code 555082400	555082410	555082120

HT/HD Winding Wire				
		400-3-50 DOL HT		
Wire Code		573325840	573325841	573325844
Wire Type		D1,4/2,4	D1,5/2,5	D1,8/2,8
Tot wire need [m]		300	285	310
		400/690-3-50 SD HT		
Wire Code		573325840	573325841	573325844
Wire Type		D1,4/2,4	D1,5/2,5	D1,8/2,8
Tot wire need [m]		300	285	305
In case of order, the quantity delivered will depend from the coil currently available.				

Flat Power cable H07BB-F ACS approved				
		400-3-50 DOL		
Cable code		572850962	572850964	572850964
Section (mm2)		4G6	4G10	4G10
		400/690-3-50 SD		
Cable code		572850910	572850910	572850910
Section (mm2)		3X4	3X4	3X4
Cable code		572850960	572850960	572850960
Section (mm2)		4G4	4G4	4G4
Codes are referred to 1 m of cable				

Special Versions			
1	Kit cable glands FPM	5KL30ABF	All models
	Kit cable glands EPDM from BEGIN 2010	5KL30ABN	All models cable 4G10
*3	Seals kit EPDM	5KL02AAE	All models
	Seals kit FPM	5KL02AAF	All models
*5	Kit MECH D28 / Flange SIC/SIC/NBR	5KL01AAM	All models
	Kit MECH D28 / Flange SIC/SIC/FPM	5KL01AAN	All models
15	Sand guard FPM	168561021	All models
16	Release valve A316 FPM	549300071	All models
17	Plug for PT100	540500020	All models
18	Cable gland gasket FPM	568560291	All models

(\*) = WARNING. These parts replacement requires an Authorized Service.

\* Recommended spare parts - Parti di ricambio consigliate  
\* Pièces détachées conseillées - Empfohlene Ersatzteile

L6WN\_A\_5\_Mar08\_EdF