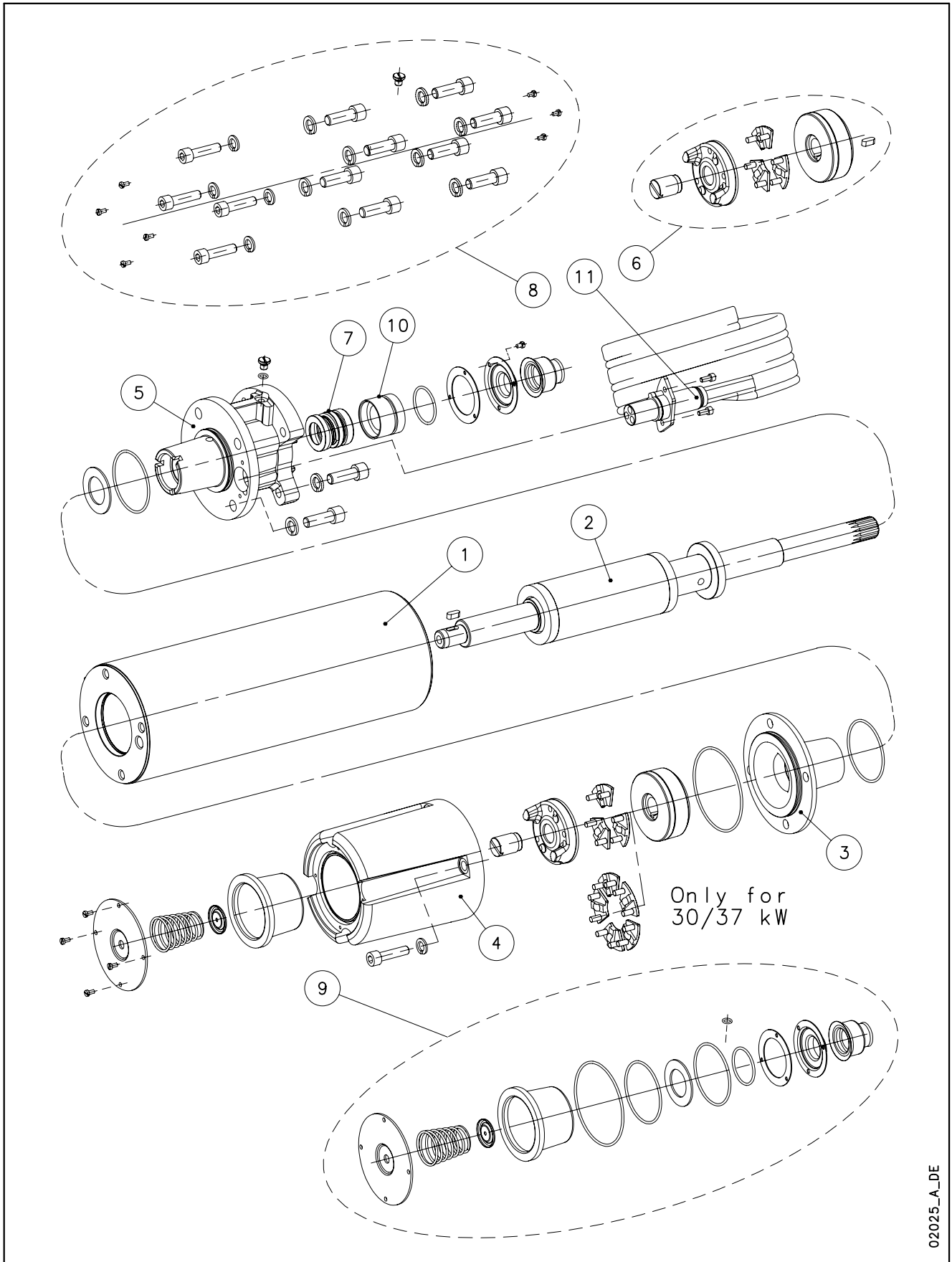


L6C - CP6C



02025_A_DE

N.	Descrizione it	Description en	Description fr	Beschreibung de	Descripción es	Descrição pt
1	Statore	Stator	Stator	Stator	Estator	Estator
2	Albero rotore	Rotor shaft	Arbre rotor	Rotorwelle	Árbol rotor	Veio rotor
3	Supporto inferiore con bussola	Lower bracket with carbon bush	Support inférieur avec douille	Untere Lagerung mit Buchse	Soporte inferior con casquillo	Suporte inferior com bucha
4	Supporto kit reggispinta	Thrust bearing bracket	Support KIT palier de butée	Drucklagergehäuse	Soporte kit cojinete de empuje	Suporte Kit mancais de impulso
5	Supporto superiore con bussola	Upper bracket with carbon bush	Support supérieur avec douille	Obere Lagerung mit Buchse	Soporte superior con casquillo	Suporte superior com bucha
6	KIT Reggispinta L6C da 4 a 22 kW	Thrust bearing KIT L6C from 4 to 22 kW	KIT Palier de butée L6C de 4 à 22 kW	Drucklager Bausatz L6C von 4 bis 22 kW	KIT Cojinete de empuje L6C de 4 a 22 kW	KIT mancais de impulso L6C de 4 a 22 kW
	KIT Reggispinta L6C da 30 a 37 kW	Thrust bearing KIT L6C from 30 to 37 kW	KIT Palier de butée L6C de 30 à 37 kW	Drucklager Bausatz L6C von 30 bis 37 kW	KIT Cojinete de empuje L6C de 30 a 37 kW	KIT mancais de impulso L6C de 30 a 37 kW
7	Tenuta meccanica	Mechanical seal	Garniture mécanique	Gleitringdichtung	Cierre mecánico	Vedante mecânico
8	KIT Viterie	Screws KIT	KIT Visserie	Bausatz Schrauben	KIT Tornillos	KIT parafusos
9	KIT Guarnizioni	Seals KIT	KIT Garnitures	Bausatz Dichtungen	KIT Juntas	KIT guarnições
10	Distanziale tenuta meccanica	Seal spacer	Entretoise garniture mécanique	Gleitringdichtungsdistanzstück	Distanciador cierre mecánico	Espaçador vedante mecânico
11	Cavo con connettore 4x4mm ² 2.4mt (4-15kW)	Cable with connector 4x4mm ² 2.4m (4-15 kW)	Câble avec connecteur 4x4 mm ² 2,4 m (4-15 kW)	Kabel mit Verbinder 4x4mm ² 2.4mt (4-15kW)	Cable con conector 4x4mm ² 2,4m (4-15kW)	Cabo com conector 4x4mm ² 2.4m (4-15kW)
	Cavo con connettore 4x6mm ² 2.4mt (18.5-22kW)	Cable with connector 4x6mm ² 2.4m (18.5-22 kW)	Câble avec connecteur 4x6 mm ² 2,4 m (18.5-22 kW)	Kabel mit Verbinder 4x6mm ² 2.4mt (18.5-22kW)	Cable con conector 4x6mm ² 2,4m (18.5-22kW)	Cabo com conector 4x6mm ² 2.4m (18.5-22kW)
	Cavo con connettore 4x8mm ² 2.4mt (30-37kW)	Cable with connector 4x8mm ² 2.4m (30-37 kW)	Câble avec connecteur 4x8 mm ² 2,4 m (30-37 kW)	Kabel mit Verbinder 4x8mm ² 2.4mt (30-37kW)	Cable con conector 4x8mm ² 2,4m (30-37kW)	Cabo com conector 4x8mm ² 2.4m (30-37kW)
N.	Beschrijving nl	Περιγραφή el	Açıklama tr	Kuvaus fi	Описание ru	Opis pl
1	Stator	Στάτορας	Statör	Staattori	Статор	Kierownica
2	Rotoras	Ρότορας με άξονα	Rotor mili	Roottorin akseli	Вал ротора	Wał rotora
3	Onderste steun met bus	Κάτω έδρανο με κουζινέτο	Kovanlı alt destek	Alatuki ja holkki	Нижняя опора со втулкой	Dolny wspornik z tuleją
4	Steun drukklager kit	Βάση ωστικού εδράνου	Basınç yatağı takımı desteği	Painelaakerisarjan tuki	Опора комплекта упорного подшипника	Wspornik zestawu łożyska wzdłużnego
5	Bovenste steun met bus	Πρόσθιος δακτύλιος τριβής	Kovanlı üst destek	Ylätuki ja holkki	Верхняя опора со втулкой	Górny wspornik z tuleją
6	Drukklager KIT L6C van 4 tot 22 kW	Κιτ ωστικού εδράνου L6C από 4 έως 22 kW	Basınç yatağı takımı L6C 4 - 22 kW	Painelaakerisarja L6C 4 - 22 kW	КОМПЛЕКТ упорного подшипника L6C от 4 до 22 кВт	ZESTAW łożyska wzdłużnego L6C od 4 do 22 kW
	Drukklager KIT L6C van 30 tot 37 kW	Κιτ ωστικού εδράνου L6C από 30 έως 37 kW	Basınç yatağı takımı L6C 30 - 37 kW	Painelaakerisarja L6C 30 - 37 kW	КОМПЛЕКТ упорного подшипника L6C от 30 до 37 кВт	ZESTAW łożyska wzdłużnego L6C od 30 do 37 kW
7	Mechanische afdichting	Μηχανικός στυπιοθλιπτής	Mekanik conta	Mekaaninen tiiviste	Механическое уплотнение	Uszczelnienie mechaniczne
8	KIT met schroeven en moeren	Κιτ βιδών	Vida takımı	Ruuvisarja	КОМПЛЕКТ винтов	ZESTAW łączników gwintowych
9	KIT met dichtingen	Κιτ στεγανοποίησης	Conta takımı	Tiivistesarja	КОМПЛЕКТ прокладок	ZESTAW uszczelek
10	Afstandsstuk mechanische afdichting	Αποστάτης μηχανικού στυπιοθλιπτή	Mekanik conta ara halkası	Mekaanisen tiivisteen välilevy	Распорная деталь механического уплотнения	Część dystansowa uszczelnienia mechanicznego
11	Kabel met stekker 4x4mm ² 2,4m (4-15kW)	Καλώδιο με φίς στάτη 4x4mm ² 2.4mt (4-15kW)	Konektörülü kablo 4x4mm ² 2.4m (4-15kW)	Liittimellä varustettu kaapeli 4x4mm ² 2,4m (4-15kW)	Кабель с соединителем 4x4mm ² 2,4m (4-15кВт)	Kabel z łącznikiem 4x4mm ² 2.4mt (4-15kW)
	Kabel met stekker 4x6mm ² 2,4m (18.5-22kW)	Καλώδιο με φίς στάτη 4x6mm ² 2.4mt (18.5-22kW)	Konektörülü kablo 4x6mm ² 2.4m (18.5-22kW)	Liittimellä varustettu kaapeli 4x6mm ² 2,4m (18.5-22kW)	Кабель с соединителем 4x6mm ² 2,4m (18.5-22кВт)	Kabel z łącznikiem 4x6mm ² 2.4mt (18.5-22kW)
	Kabel met stekker 4x8mm ² 2,4m (30-37kW)	Καλώδιο με φίς στάτη 4x8mm ² 2.4mt (30-37kW)	Konektörülü kablo 4x8mm ² 2.4m (30-37kW)	Liittimellä varustettu kaapeli 4x8mm ² 2,4m (30-37kW)	Кабель с соединителем 4x8mm ² 2,4m (30-37кВт)	Kabel z łącznikiem 4x8mm ² 2.4mt (30-37kW)

L6C

3 ~, 380-415V DOL ->	L6C40T405	L6C55T405	L6C75T405	L6C93T405	L6C110T405	L6C150T405	L6C185T405	L6C220T405	L6C300T405	L6C370T405
	107030010	107030020	107030030	107030040	107030050	107030060	107030070	107030080	107030090	107030100
3 ~, 400/690V SD ->	-	107030110	107030120	107030130	107030140	107030150	107030160	107030170	107030180	107030190
	107030200									
kW ->	4,0	5,5	7,5	9,3	11,0	15,0	18,5	22,0	30,0	37,0
	40,0									

6	Thrust bearing KIT	K703AAA	All Versions axial thrust 4-22 kW (16000N)
		K703AAB	All Versions axial thrust 30-37 kW (27000N)
8	Screws KIT	K703AAC	304 S.S.
9	Seals KIT	K703AAD	Elastomers - Sand guards NBR/Neoprene . Bellows, NBR / Lower cover 304 S.S..

Single Unit

3	Lower bracket	187030290	Incl. carbon bush									
4	Thrust bearing Bracket	187030300	Intermediate bracket									
5	Upper bracket DOL	187030310	Incl. carbon bush									
	Upper bracket SD	187030320										
7	Mechanical seal	187030350	VBPGG -> Standard Product Aluminium oxide/Carbon graphite									
		187030360	Q1Q1PGG -> Special Product SIC									
10	Seal spacer	187030390										
1	Stator, DOL	187030000	187030010	187030020	187030030	187030040	187030050	187030060	187030070	187030080	187030090	
		-	187030100	187030110	187030120	187030130	187030140	187030150	187030160	187030170	TBD	
	TBD											
2	Rotor shaft	187030190	187030200	187030210	187030220	187030230	187030240	187030250	187030260	187030270	187030280	
		TBD										
		Shaft Extension -> 316 S.S.							Shaft Extension -> Duplex 329 S.S.			

Cable with (n.1) connector

11	4x4mmq - 4m	109890470	Epdm -> 4-15 kW
	4x6mmq - 4m	109890471	Epdm -> 18,5-22 kW
	4x8mmq - 4m	109890472	Epdm -> 30-37 kW

Cable for SD Motors: pls require for them.

TBD: To Be Defined

* Recommended spare parts - Parti di ricambio consigliate

* Pièces détachées conseillées - Empfohlene Ersatzteile

L6C_P(40-400)_5_Jan06_EdA

xylem

