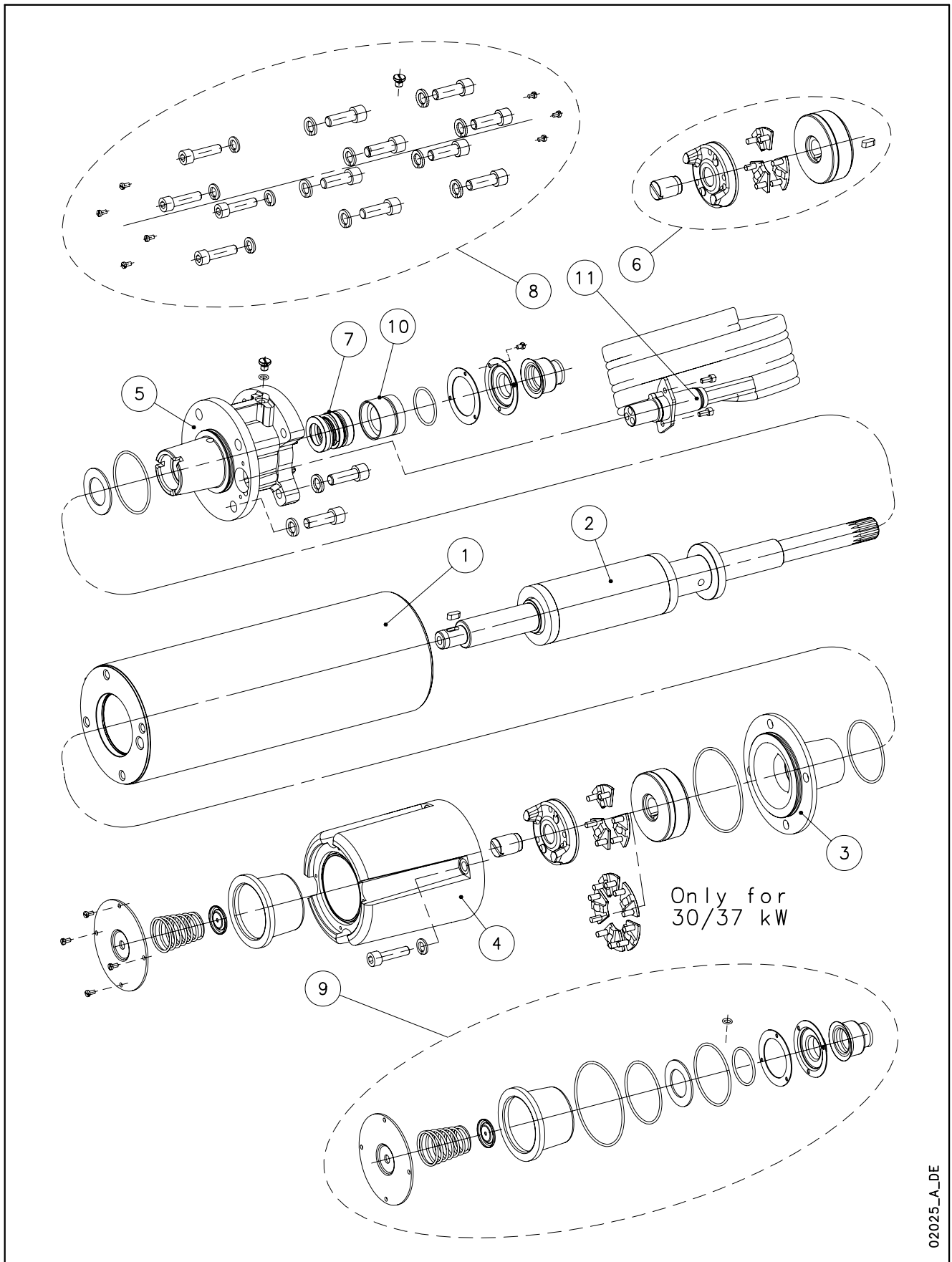


L6C - CP6C



02025_A_DE

N.	Descrizione it	Description en	Description fr	Beschreibung de	Descripción es	Descrição pt
1	Statore	Stator	Stator	Stator	Estator	Estator
2	Albero rotore	Rotor shaft	Arbre rotor	Rotorwelle	Árbol rotor	Veio rotor
3	Supporto inferiore con bussola	Lower bracket with carbon bush	Support inférieur avec douille	Untere Lagerung mit Buchse	Soporte inferior con casquillo	Suporte inferior com bucha
4	Supporto kit reggispinta	Thrust bearing bracket	Support KIT palier de butée	Drucklagergehäuse	Soporte kit cojinete de empuje	Suporte Kit mancais de impulso
5	Supporto superiore con bussola	Upper bracket with carbon bush	Support supérieur avec douille	Obere Lagerung mit Buchse	Soporte superior con casquillo	Suporte superior com bucha
6	KIT Reggispinta L6C da 4 a 22 kW	Thrust bearing KIT L6C from 4 to 22 kW	KIT Palier de butée L6C de 4 à 22 kW	Drucklager Bausatz L6C von 4 bis 22 kW	KIT Cojinete de empuje L6C de 4 a 22 kW	KIT mancais de impulso L6C de 4 a 22 kW
	KIT Reggispinta L6C da 30 a 37 kW	Thrust bearing KIT L6C from 30 to 37 kW	KIT Palier de butée L6C de 30 à 37 kW	Drucklager Bausatz L6C von 30 bis 37 kW	KIT Cojinete de empuje L6C de 30 a 37 kW	KIT mancais de impulso L6C de 30 a 37 kW
7	Tenuta meccanica	Mechanical seal	Garniture mécanique	Gleitringdichtung	Cierre mecánico	Vedante mecânico
8	KIT Viterie	Screws KIT	KIT Visserie	Bausatz Schrauben	KIT Tornillos	KIT parafusos
9	KIT Guarnizioni	Seals KIT	KIT Garnitures	Bausatz Dichtungen	KIT Juntas	KIT guarnições
10	Distanziale tenuta meccanica	Seal spacer	Entretoise garniture mécanique	Gleitringdichtungsdistanzstück	Distanciador cierre mecánico	Espaçador vedante mecânico
11	Cavo con connettore 4x4mm ² 2.4mt (4-15kW)	Cable with connector 4x4mm ² 2.4m (4-15 kW)	Câble avec connecteur 4x4 mm ² 2,4 m (4-15 kW)	Kabel mit Verbinder 4x4mm ² 2.4mt (4-15kW)	Cable con conector 4x4mm ² 2,4m (4-15kW)	Cabo com conector 4x4mm ² 2.4m (4-15kW)
	Cavo con connettore 4x6mm ² 2.4mt (18.5-22kW)	Cable with connector 4x6mm ² 2.4m (18.5-22 kW)	Câble avec connecteur 4x6 mm ² 2,4 m (18.5-22 kW)	Kabel mit Verbinder 4x6mm ² 2.4mt (18.5-22kW)	Cable con conector 4x6mm ² 2,4m (18.5-22kW)	Cabo com conector 4x6mm ² 2.4m (18.5-22kW)
	Cavo con connettore 4x8mm ² 2.4mt (30-37kW)	Cable with connector 4x8mm ² 2.4m (30-37 kW)	Câble avec connecteur 4x8 mm ² 2,4 m (30-37 kW)	Kabel mit Verbinder 4x8mm ² 2.4mt (30-37kW)	Cable con conector 4x8mm ² 2,4m (30-37kW)	Cabo com conector 4x8mm ² 2.4m (30-37kW)
N.	Beschrijving nl	Περιγραφή el	Açıklama tr	Kuvaus fi	Описание ru	Opis pl
1	Stator	Στάτορας	Statör	Staattori	Статор	Kierownica
2	Rotoras	Ρότορας με άξονα	Rotor mili	Roottorin akseli	Вал ротора	Wał rotora
3	Onderste steun met bus	Κάτω έδρανο με κουζινέτο	Kovanli alt destek	Alatuki ja holkki	Нижняя опора со втулкой	Dolny wspornik z tuleją
4	Steun druklager kit	Βάση ωστικού εδράνου	Basınç yatağı takımı desteği	Painelaakerisarjan tuki	Опора комплекта упорного подшипника	Wspornik zestawu łożyska wzdużnego
5	Bovenste steun met bus	Πρόσθιος δακτύλιος τριβής	Kovanli üst destek	Ylätuki ja holkki	Верхняя опора со втулкой	Górny wspornik z tuleją
6	Druklager KIT L6C van 4 tot 22 kW	Κιτ ωστικού εδράνου L6C από 4 έως 22 kW	Basınç yatağı takımı L6C 4 - 22 kW	Painelaakerisarja L6C 4 - 22 kW	КОМПЛЕКТ упорного подшипника L6C от 4 до 22 кВт	ZESTAW łożyska wzdużnego L6C od 4 do 22 kW
	Druklager KIT L6C van 30 tot 37 kW	Κιτ ωστικού εδράνου L6C από 30 έως 37 kW	Basınç yatağı takımı L6C 30 - 37 kW	Painelaakerisarja L6C 30 - 37 kW	КОМПЛЕКТ упорного подшипника L6C от 30 до 37 кВт	ZESTAW łożyska wzdużnego L6C od 30 do 37 kW
7	Mechanische afdichting	Μηχανικός στυπιοθλίπτης	Mekanik conta	Mekaaninen tiiviste	Механическое уплотнение	Uszczelnienie mechaniczne
8	KIT met schroeven en moeren	Κιτ βιδών	Vida takımı	Ruuvisarja	КОМПЛЕКТ винтов	ZESTAW łączników gwintowych
9	KIT met dichtingen	Κιτ στεγανοποίησης	Conta takımı	Tiivistesarja	КОМПЛЕКТ прокладок	ZESTAW uszczelek
10	Afstandsstuk mechanische afdichting	Αποστάτης μηχανικού στυπιοθλίπτη	Mekanik conta ara halkası	Mekaanisen tiivisteen välilevy	Распорная деталь механического уплотнения	Część dystansowa uszczelnienia mechanicznego
11	Kabel met stekker 4x4mm ² 2,4m (4-15kW)	Καλώδιο με φίς στάτη 4x4mm ² 2.4mt (4-15kW)	Konektörli kablo 4x4mm ² 2.4m (4-15kW)	Liittimellä varustettu kaapeli 4x4mm ² 2,4m (4-15kW)	Кабель с соединителем 4x4mm ² 2,4m (4-15кВт)	Kabel z łącznikiem 4x4mm ² 2.4mt (4-15kW)
	Kabel met stekker 4x6mm ² 2,4m (18.5-22kW)	Καλώδιο με φίς στάτη 4x6mm ² 2.4mt (18.5-22kW)	Konektörli kablo 4x6mm ² 2.4m (18.5-22kW)	Liittimellä varustettu kaapeli 4x6mm ² 2,4m (18.5-22kW)	Кабель с соединителем 4x6mm ² 2,4m (18.5-22кВт)	Kabel z łącznikiem 4x6mm ² 2.4mt (18.5-22kW)
	Kabel met stekker 4x8mm ² 2,4m (30-37kW)	Καλώδιο με φίς στάτη 4x8mm ² 2.4mt (30-37kW)	Konektörli kablo 4x8mm ² 2.4m (30-37kW)	Liittimellä varustettu kaapeli 4x8mm ² 2,4m (30-37kW)	Кабель с соединителем 4x8mm ² 2,4m (30-37кВт)	Kabel z łącznikiem 4x8mm ² 2.4mt (30-37kW)

CP6C

3 Ph, 400V DOL ->	CP6C40T405	CP6C55T405	CP6C75T405	CP6C93T405	CP6C110T405	CP6C150T405	CP6C185T405	CP6C220T405	CP6C300T405	CP6C370T405	
	107031010	107031020	107031030	107031040	107031050	107031060	107031070	107031080	107031090	107031100	
3 Ph, 400/690V S/D ->	-	107031110	107031120	107031130	107031140	107031150	107031160	107031170	107031180	107031190	
	kW ->		4,0	5,5	7,5	9,3	11,0	15,0	18,5	22,0	30,0

Kit

6	Thrust bearing KIT	K703AAA	16kN, 4-22 kW
	Thrust bearing KIT	K703AAB	27kN, over 30 kW
8	Screws KIT	K703AAC	1.4301
9	Seals KIT	K703AAD	Elastomers - Sand guard & Gasket - Bellows and lower cover.

Single Unit

3	Lower support	187030290	EN-GJL-200									
	Bearing support	187030300										
	Upper support DOL	187030310										
	Upper support SD	187030320										
7	Mechanical seal	187030350	VBPGG - Standard Product Graphite / Aluminium oxide									
		187030360	Q1Q1PGG - Special Product SIC									
10	Seal spacer	187030390										
1	Stator - DOL	187030500	187030510	187030520	187030530	187030540	187030550	187030560	187030570	187030580	187030590	
	Stator - SD	-	187030600	187030610	187030620	187030630	187030640	187030650	187030660	187030670	TBD	
2	Rotor shaft	1.4401 Shaft Extension: -> 18,5 kW							1.4460 Shaft Extension: -> 37 kW			
		187030190	187030200	187030210	187030220	187030230	187030240	187030250	187030260	187030270	187030280	

Cable with single connector

11	4X4, 4MT	109890470	Epdm	-> 4-15 kW
	4X6, 4MT	109890471	Epdm	-> 18,5-22 kW
	4X8, 4MT	109890472	Epdm	-> 30-37 kW

Cable for SD Motors, On Request.

TBD: To Be Defined

* Recommended spare parts - Parti di ricambio consigliate

* Pièces détachées conseillées - Empfohlene Ersatzteile

CP6C_5_Jan06_EdA

xylem

