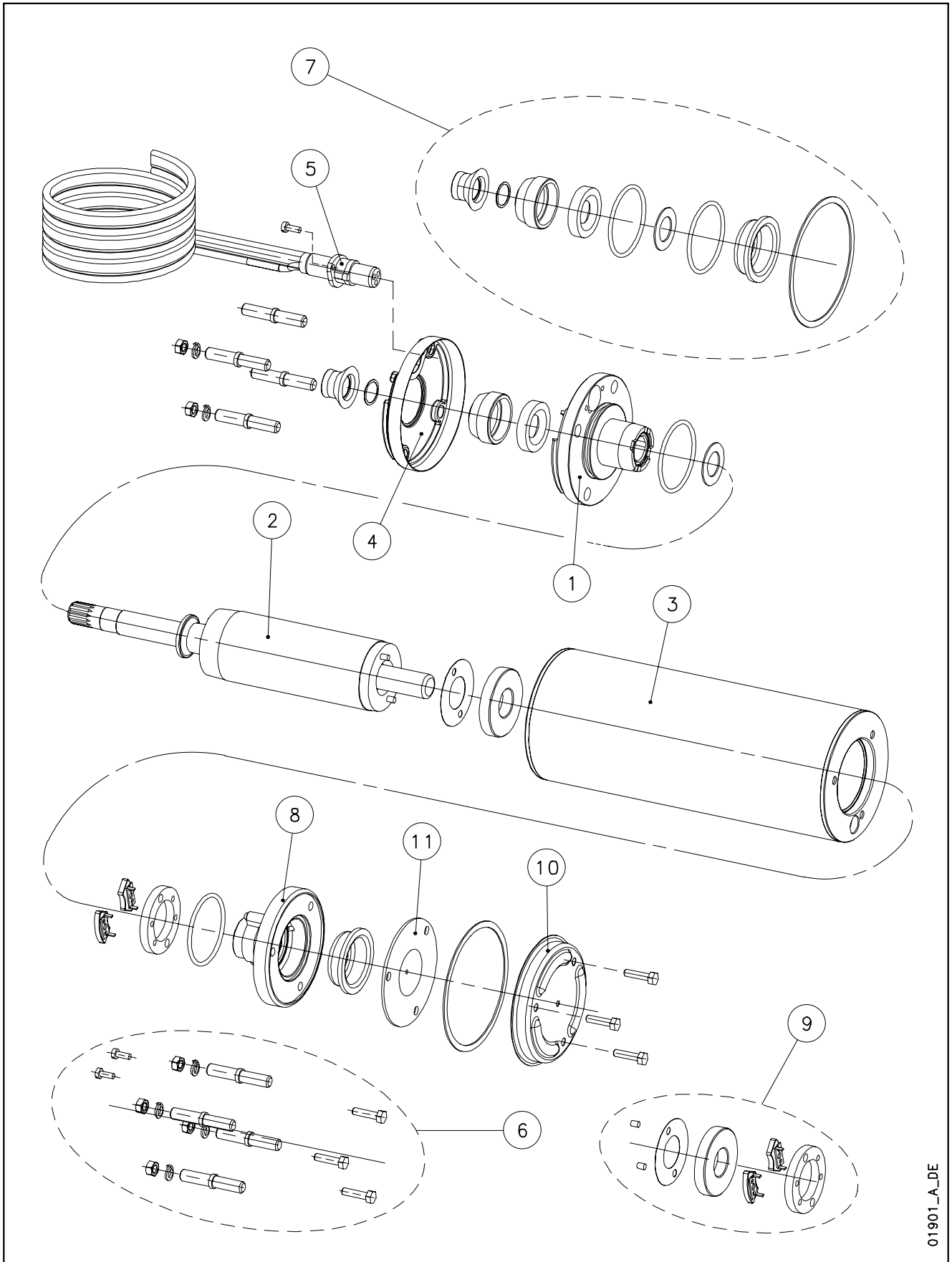


L4C - CP4C



01901_A_DE

N.	Descrizione it	Description en	Description fr	Beschreibung de	Descripción es	Descrição pt
1	Supporto superiore	Upper support	Support supérieur	Obere Lagerung	Soporte superior	Suporte superior
2	Albero rotore	Rotor shaft	Arbre rotor	Rotorwelle	Árbol rotor	Veio rotor
3	Statore	Stator	Stator	Stator	Estator	Estator
4	Coperchio superiore	Upper cover	Couvercle supérieur	Ober Lagerung	Tapa superior	Tampa superior
5	Cavo con connettore 4x1.5mm ² 1.7mt	Cable with connector 4x1.5mm ² 1.7m	Câble avec connecteur 4x1,5 mm ² 1,7 m	Kabel mit Verbinder 4x1.5mm ² 1.7m	Cable con conector 4x1,5mm ² 1,7m	Cabo com conector 4x1.5mm ² 1.7m
6	KIT Viterie	Screws KIT	KIT Visserie	Bausatz Schrauben	KIT Tornillos	KIT parafusos
7	KIT Guarnizioni	Seals KIT	KIT Garnitures	Bausatz Dichtungen	KIT Juntas	KIT guarnições
8	Supporto inferiore	Lower support	Support inférieur	Untere Lagerung	Soporte inferior	Suporte inferior
9	KIT Reggispinta da 0.37 a 1.1 kW	Thrust bearing KIT from 0.37 to 1.1 kW	KIT Palier de butée de 0,37 à 1,1 kW	Drucklagerbausatz von 0.37 bis 1.1 kW	KIT Cojinete de empuje de 0,37 a 1,1 kW	KIT mancais de impulso de 0.37 a 1.1 kW
10	Coperchio inferiore	Bottom cover	Couvercle inférieur	Untere Abdeckung	Tapa inferior	Tampa inferior
11	Flangia premi soffierto	Diaphragm press flange	Bride presse-soufflet	Blasebalgpressflansch	Brida sujetafuelle	Flange de pressão do fole
N.	Beschrijving nl	Περιγραφή el	Açıklama tr	Kuvaus fi	Описание ru	Opis pl
1	Bovenste steun	Άνω έδρανο	Kovanlı	Ylätuki	Верхняя опора	Górny wspornik
2	Rotoras	Ρότορας	Aksi basınçlı	Roottorin akseli	Вал ротора	Wał rotora
3	Stator	Στάτορας	Statör	Staattori	Статор	Kierownica
4	Deksel bovenste steun	Καπάκι άνω μπρακέτου	Üst destek kapağı	Ylätuen kansi	Крышка верхней опоры	Pokrywa górnego wspornika
5	Kabel met stekker 4x1,5mm ² 1,7m	Καλώδιο με φίς στάτη 4x1,5mm ² 1.7m	Konektörlü kablo 4x1.5mm ² 1.7m	Liittimellä varustettu kaapeli 4x1,5mm ² 1,7m	Кабель с соединителем 4x1.5mm ² 1.7m	Kabel z łącznikiem 4x1.5mm ² 1.7mt
6	KIT met schroeven + moeren	Σετ βιδών	Vida takımı	Ruuvisarja	КОМПЛЕКТ винтов	ZESTAW łączników gwintowych
7	KIT met dichtingen	Κιτ στεγανοποίησης	Conta takımı	Tiivistesarja	КОМПЛЕКТ прокладок	ZESTAW Uszczelek
8	Onderste steun met bus	Κάτω έδρανο με κουζινέτο	Kovanlı alt destek	Alatuki ja holkki	Нижняя опора со втулкой	Dolny wspornik z tuleją
9	Drucklager KIT van 1,5 tot 2,2 kW	Κιτ ωστικού εδράνου από 3-7,5 KW	Basınç yatağı takımı 1.5 - 2.2 kW	Painelaakerisarja 1,5 - 2,2 kW	КОМПЛЕКТ упорного подшипника от 1.5 до 2.2 кВт	ZESTAW łożyska wzdlużnego od 0.37 do 1.1 kW
10	Bedekking onderkant	Κάλυμμα κάτω μπρακέτου	Alt kapak	Alakansi	Нижняя крышка	Dolna pokrywa
11	Op de membraan drukkende flens	Δίσκος διαφράγματος	Diyafram basma flanşı	Kalvon laippa	Прижимной фланец мембраны	Koźnierz przeponowy

L4C: 0,37 ÷ 1,1 kW (2000N)

1 ~, 220-240V ->	L4C03M235	L4C05M235	L4C07M235	L4C11M235
	107020210	107020220	107020230	107020240
3 ~, 380-415V ->	L4C03T405	L4C05T405	L4C07T405	L4C11T405
	107020400	107020410	107020420	107020430
kW ->	0,37	0,55	0,75	1,10

Kit

6	Screws KIT	K702AAA	304 S.S.
*7	Seals KIT	K702AAC	Lip seal - Elastomers NBR . Bellow, EPDM. Fixed sand guard, Nylon
*9	Thrust bearing KIT 0,37-1,1 kW	K702AAF	Carbon - Graphite / All Versions, with axial thrust 2000 N

Single Unit

1	Upper bracket w/carbon bush	187020000					
4	Upper bracket cover	187020560					
8	Lower bracket w/carbon bush	187020670					
10	Bottom cover	187020730					
11	Diaphragm press flange	187020740					
2	Rotor shaft	1~	187020030	187020040	187020050	187020060	Rotor shaft with counter-thrust washer
		3~	187020070	187020080	187020090	187020100	
3	Stator	220-240V	187020220	187020230	187020240	187020250	
		380-415V	187020260	187020270	187020280	187020290	

Cable with n.1 connector

5	4x1,5mmq - 1,7m	109890450	Epdm
---	-----------------	-----------	------

Cooling glycol ISO15 : White Oil mineral (AGIP ITE 360 ...

Cooling glycol 35% : API/IP Antigelo Red, Agip Antifreezer Extra, Fiat Parafllu ...
(after date 31/01/2013)

* Recommended spare parts - Parti di ricambio consigliate

* Pièces détachées conseillées - Empfohlene Ersatzteile

L4C_P(3-75)_5_Jan06_EdC

L4C: 1,5 ÷ 2,2 kW (3000N)

1 ~, 220-240V ->	L4C15M235	L4C22M235
	107020250	107020260
3 ~, 380-415V ->	L4C15T405	L4C22T405
	107020440	107020450
kW ->	1,50	2,20

Kit

6	Screws KIT	K702AAA	304 S.S.
*7	Seals KIT	K702AAD	Lip seal - Elastomers NBR . Bellow, EPDM. Fixed sand guard, Nylon
*9	Thrust bearing KIT 1,5-2,2 kW	K702AAG	Carbon - Graphite / All Versions, with axial thrust 3000 N

Single Unit

1	Upper bracket w/carbon bush	187020010			
4	Upper bracket cover	187020560			
8	Lower bracket w/carbon bush	187020680			
10	Bottom cover	187020730			
11	Diaphragm press flange	187020740			
2	Rotor shaft	1~	187020110	187020120	Rotor shaft with counter-thrust washer
		3~	187020140	187020150	
3	Stator	220-240V	187020360	187020370	
		380-415V	187020380	187020390	

Cable with n.1 connector

5	4x1,5mmq - 1,7m	109890450	Epdm
---	-----------------	-----------	------

* Recommended spare parts - Parti di ricambio consigliate

* Pièces détachées conseillées - Empfohlene Ersatzteile

L4C_P(3-75)_5_Jan06_EdC

L4C: 3,0 ÷ 7,5 kW (6000N)

1 ~, 220-240V ->		L4C40M235		
		107020270		
3 ~, 380-415V ->	L4C30T405	L4C40T405	L4C55T405	L4C75T405
	107020460	107020470	107020480	107020490
kw ->	3,0	4,0	5,5	7,5

Kit

5	Screws KIT	K702AAB	304 S.S.
*6	Seals KIT	K702AAE	Lip seal - Elastomers NBR . Bellow, EPDM. Fixed sand guard, Nylon
*7	Thrust bearing KIT 3-7,5 kW	K702AAH	Carbon - Graphite / All Versions, with axial thrust 6000 N

Single Unit

1	Upper bracket w/carbon bush	187020020			
8	Lower bracket w/ carbon bush	187020690			
9	Bottom cover	187020750			
10	Spacer tube	187020760			
11	Thrust bearing KIT bracket	187020770			
2	Rotor shaft	1~	187020170		
		3~	187020180	187020190	187020200
3	Stator	220-240V	187020460		
		380-415V	187020470	187020480	187020490

Rotor shaft with counter-thrust washer

Cable with n.1 connector, EPDM

5	4x1,5mmq - 2,7m	109890451	-> Motor cable 3~: 3-5,5 kW
	4x2,5mmq - 3,5m	109890455	-> Motor cable 3~: 7,5 kW
	4x2,5mmq - 2,7m	TBD	-> Motor cable 1~: 4,0 kW

TBD: To Be Defined

* Recommended spare parts - Parti di ricambio consigliate

* Pièces détachées conseillées - Empfohlene Ersatzteile

L4C_P(3-75)_5_Jan06_EdC

xylem

