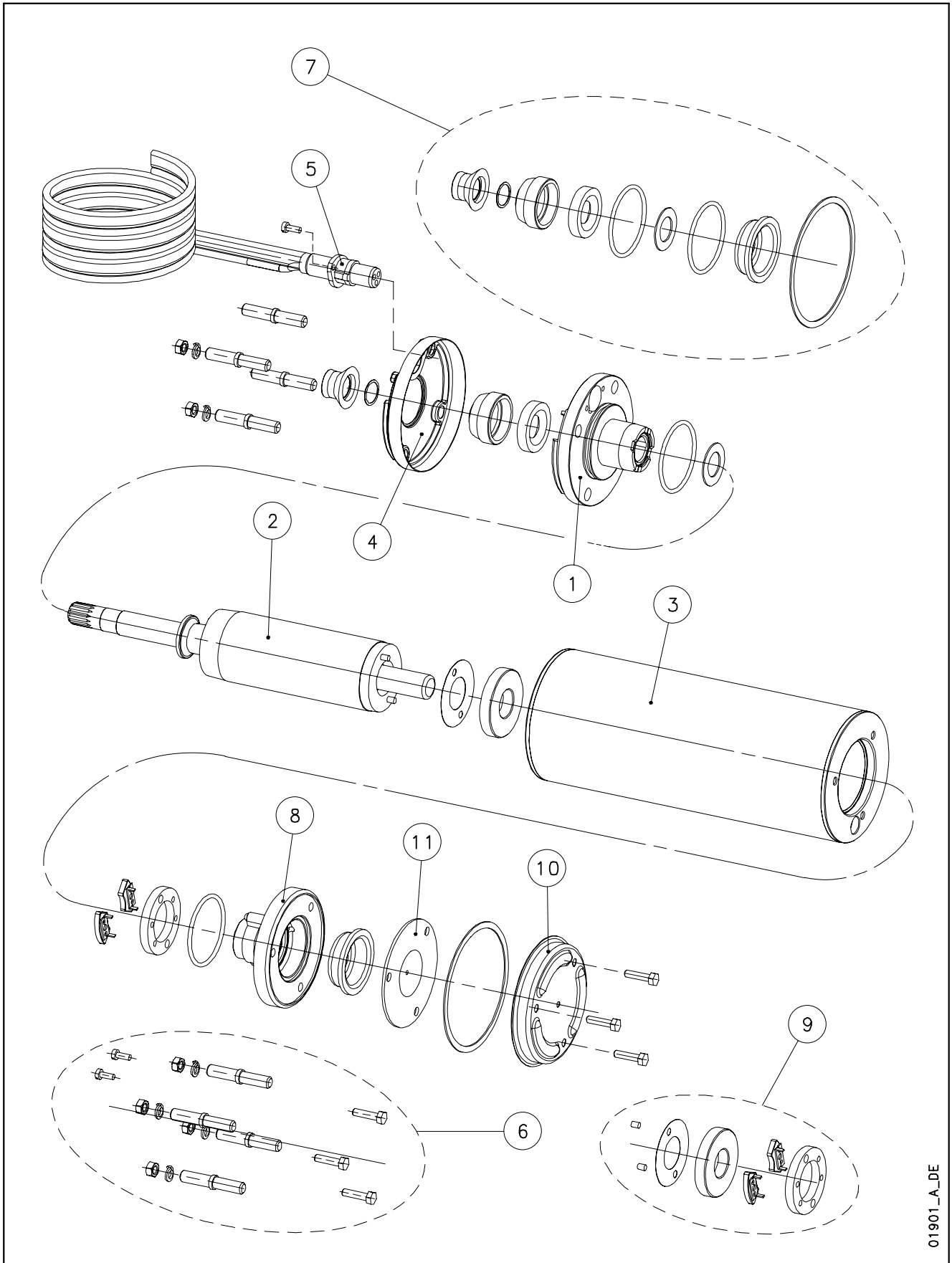


## L4C - CP4C



01901\_A\_DE

N.	Descrizione it	Description en	Description fr	Beschreibung de	Descripción es	Descrição pt
1	Supporto superiore	Upper support	Support supérieur	Obere Lagerung	Soporte superior	Suporte superior
2	Albero rotore	Rotor shaft	Arbre rotor	Rotorwelle	Árbol rotor	Veio rotor
3	Statore	Stator	Stator	Stator	Estator	Estator
4	Coperchio superiore	Upper cover	Couvercle supérieur	Ober Lagerung	Tapa superior	Tampa superior
5	Cavo con connettore 4x1.5mm <sup>2</sup> 1.7mt	Cable with connector 4x1.5mm <sup>2</sup> 1.7m	Câble avec connecteur 4x1,5 mm <sup>2</sup> 1,7 m	Kabel mit Verbinder 4x1.5mm <sup>2</sup> 1.7m	Cable con conector 4x1,5mm <sup>2</sup> 1,7m	Cabo com conector 4x1.5mm <sup>2</sup> 1.7m
6	KIT Viterie	Screws KIT	KIT Visserie	Bausatz Schrauben	KIT Tornillos	KIT parafusos
7	KIT Guarnizioni	Seals KIT	KIT Garnitures	Bausatz Dichtungen	KIT Juntas	KIT guarnições
8	Supporto inferiore	Lower support	Support inférieur	Untere Lagerung	Soporte inferior	Suporte inferior
9	KIT Reggispinta da 0.37 a 1.1 kW	Thrust bearing KIT from 0.37 to 1.1 kW	KIT Palier de butée de 0,37 à 1,1 kW	Drucklagerbausatz von 0.37 bis 1.1 kW	KIT Cojinete de empuje de 0,37 a 1,1 kW	KIT mancais de impulso de 0.37 a 1.1 kW
10	Coperchio inferiore	Bottom cover	Couvercle inférieur	Untere Abdeckung	Tapa inferior	Tampa inferior
11	Flangia premi soffierto	Diaphragm press flange	Bride presse-soufflet	Blasebalgpressflansch	Brida sujetafuelle	Flange de pressão do fole
N.	Beschrijving nl	Περιγραφή el	Açıklama tr	Kuvaus fi	Описание ru	Opis pl
1	Bovenste steun	Άνω έδρανο	Kovanlı	Ylätuki	Верхняя опора	Górny wspornik
2	Rotoras	Ρότορας	Aksi basınçlı	Roottorin akseli	Вал ротора	Wał rotora
3	Stator	Στάτορας	Statör	Staattori	Статор	Kierownica
4	Deksel bovenste steun	Καπάκι άνω μπρακέτου	Üst destek kapağı	Ylätuen kansi	Крышка верхней опоры	Pokrywa górnego wspornika
5	Kabel met stekker 4x1,5mm <sup>2</sup> 1,7m	Καλώδιο με φίς στάτη 4x1,5mm <sup>2</sup> 1.7m	Konektörlü kablo 4x1.5mm <sup>2</sup> 1.7m	Liittimellä varustettu kaapeli 4x1,5mm <sup>2</sup> 1,7m	Кабель с соединителем 4x1.5mm <sup>2</sup> 1.7m	Kabel z łącznikiem 4x1.5mm <sup>2</sup> 1.7mt
6	KIT met schroeven + moeren	Σετ βιδών	Vida takımı	Ruuvisarja	КОМПЛЕКТ винтов	ZESTAW łączników gwintowych
7	KIT met dichtingen	Κιτ στεγανοποίησης	Conta takımı	Tiivistesarja	КОМПЛЕКТ прокладок	ZESTAW Uszczelek
8	Onderste steun met bus	Κάτω έδρανο με κουζινέτο	Kovanlı alt destek	Alatuki ja holkki	Нижняя опора со втулкой	Dolny wspornik z tuleją
9	Drucklager KIT van 1,5 tot 2,2 kW	Κιτ ωστικού εδράνου από 3-7,5 KW	Basınç yatağı takımı 1.5 - 2.2 kW	Painelaakerisarja 1,5 - 2,2 kW	КОМПЛЕКТ упорного подшипника от 1.5 до 2.2 кВт	ZESTAW łożyska wzdlużnego od 0.37 do 1.1 kW
10	Bedekking onderkant	Κάλυμμα κάτω μπρακέτου	Alt kapak	Alakansi	Нижняя крышка	Dolna pokrywa
11	Op de membraan drukkende flens	Δίσκος διαφράγματος	Diyafram basma flanşı	Kalvon laippa	Прижимной фланец мембраны	Koźnierz przeprowny

CP4C -> 0,37 ÷ 1,1 kW

1 Ph, 230V ->	CP4C03M235	CP4C05M235	CP4C07M235	CP4C11M235
	107021210	107021220	107021230	107021240
3 Ph, 400V ->	CP4C03T405	CP4C05T405	CP4C07T405	CP4C11T405
	107021400	107021410	107021420	107021430
kW ->	0,37	0,55	0,75	1,10

**Kit**

6	Screws kit	K702AAA	1.4301
*7	Seals kit	K702AAC	Lip seal , Elastomers, Bellows, Sand guard
*9	Thrust bearing kit 0,37-1,1 kW	K702AAF	2 kN

**Single Unit**

1	Upper support	187020000	EN-GJL-200				
4	Upper cover	187020560					
8	Lower support	187020670					
10	Lower cover	187020730					
11	Diaphragm press Flange	187020740					
2	Rotor shaft	1 Ph	187020030	187020040	187020050	187020060	Extension: 1.4057
		3 Ph	187020070	187020080	187020090	187020100	
3	Stator	220-240V	187020850	187020860	187020870	187020880	1.4301
		380-415V	187020890	187020900	187020910	187020920	

On Request

**Motor cable w/ single connector**

5	4X1,5 - 1,7MT	109890490	Epdm
---	---------------	-----------	------

\* Recommended spare parts - Parti di ricambio consigliate

\* Pièces détachées conseillées - Empfohlene Ersatzteile

## CP4C -> 1,5÷ 2,2 kW

1 Ph, 230V ->	CP4C15M235	CP4C22M235
	107021250	107021260
3 Ph, 400V ->	CP4C15T405	CP4C22T405
	107021440	107021450
kW ->	<b>1,50</b>	<b>2,20</b>

### Kit

6	Screws kit	K702AAA	
*7	Seals kit	K702AAD	Lip seal , Elastomers, Bellow, Fixed sand guard
*9	Thrust bearing KIT 1,5-2,2 kW	K702AAG	3 kN

### Single Unit

1	Upper support	187020010	EN-GJL-200		
4	Upper cover	187020560			
8	Lower support	187020680			
10	Lower cover	187020730			
11	Diaphragm press Flange	187020740			
2	Rotor shaft	1 Ph	187020110	187020120	Extension: 1.4057
		3 Ph	187020140	187020150	
3	Stator	220-240V	187020930	187020940	1.4301
		380-415V	187020950	187020960	

On Request

### Motor cable w/ single connector

5	4X1,5 - 1,7MT	109890490	Epdm
---	---------------	-----------	------

\* Recommended spare parts - Parti di ricambio consigliate

\* Pièces détachées conseillées - Empfohlene Ersatzteile

CP4C\_P(3-75)\_5\_Jan07\_EdA

## CP4C -> 3,0÷ 7,5 kW

1 Ph, 230V ->		CP4C40M235		
		107021270		
3 Ph, 400V ->	CP4C30T405	CP4C40T405	CP4C55T405	CP4C75T405
	107021460	107021470	107021480	107021490
kW ->	3,0	4,0	5,5	7,5

### Kit

5	Screws kit	K702AAB	
*6	Seals kit	K702AAE	Lip seal , Elastomers, Bellow, Fixed sand guard
*9	Thrust bearing KIT 3-7,5 kW	K702AAH	6 kN

### Single Unit

1	Upper support	187020020	EN-GJL-200			
8	Lower support	187020690				
9	Lower cover	187020750				
10	Spacer tube	187020760				
11	Thrust bearing support kit	187020770				
2	Rotor shaft	1 Ph	187020170			Extension: 1.4057
		3 Ph	187020180	187020190	187020200	
3	Stator	220-240V	187020970			1.4301
		380-415V	187020980	187020990	187021000	

On Request

### Motor cable w/ single connector

5	4X1,5 - 2,7MT	109890491	Epdm	-> 3-5,5 kW, 3 Ph
	4X2,5 - 3,5MT	109890495	Epdm	-> 7,5 kW, 3 Ph

\* Recommended spare parts - Parti di ricambio consigliate

\* Pièces détachées conseillées - Empfohlene Ersatzteile

CP4C\_P(3-75)\_5\_Jan07\_EdA

# xylem

