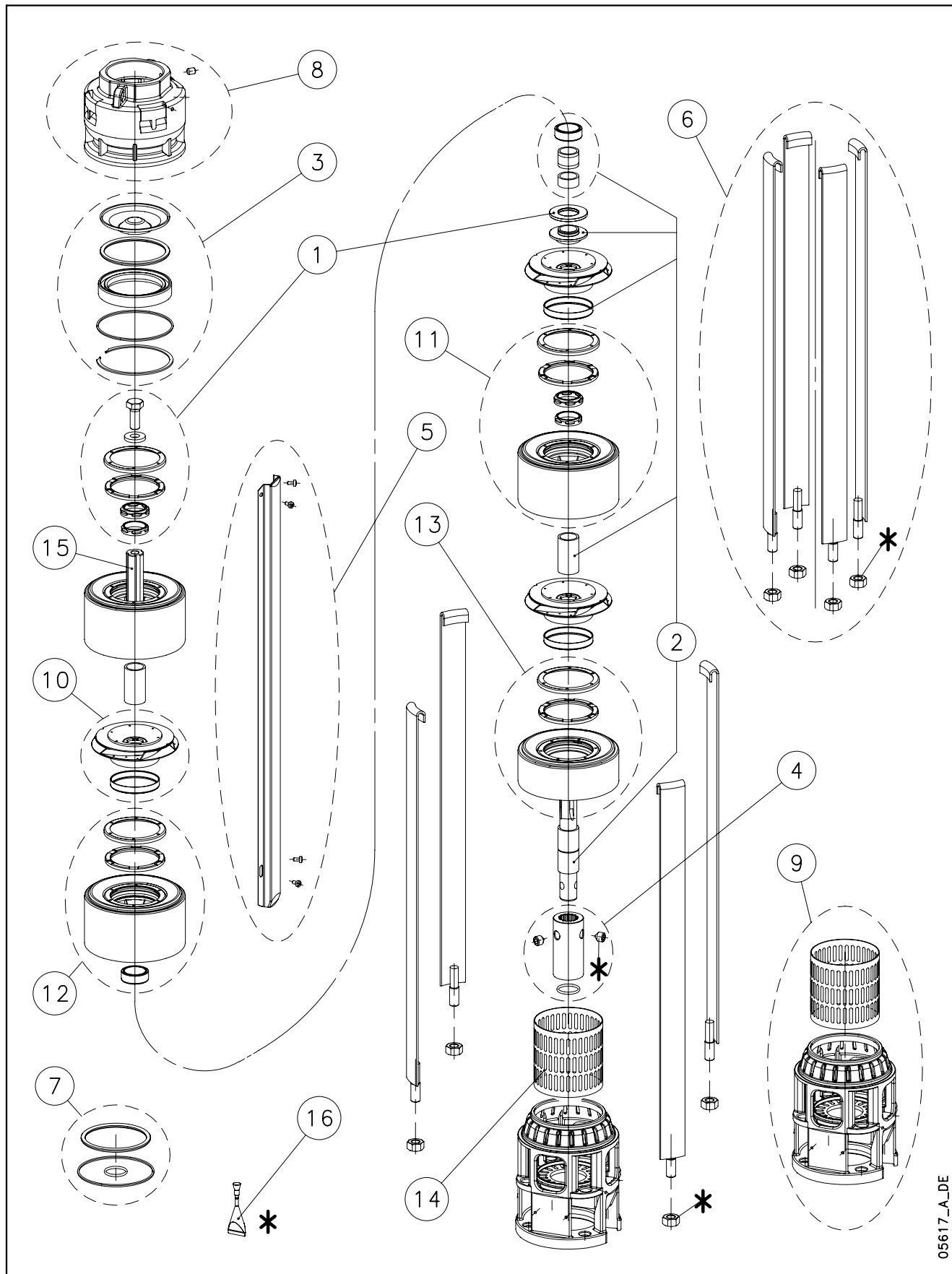


## Z612-Z660 / 6FX12H-6FX60H



05617\_A\_DE

N.	Descrizione it	Description en	Description fr	Beschreibung de	Descripción es	Descrição pt
1	Kit parti di usura leggera	Wear parts light kit	Kit pièces d'usure légères	Bausatz Verschleißteile leichter Verschleiß	Kit piezas de desgaste ligero	Kit peças de desgaste leve
2	Kit parti di usura pesante	Wear parts heavy kit	Kit pièces d'usure lourdes	Bausatz Verschleißteile schwerer Verschleiß	Kit piezas de desgaste fuerte	Kit peças de desgaste pesado
3	Kit valvola	Valve kit	Kit vanne	Ventilsatz	Kit válvula	Kit válvula
4	Kit giunto	Coupling kit	Kit manchon	Kupplungssatz	Kit junta	Kit junta
5	Kit copricavo	Cable guard kit	Kit protection de câble	Kabelabdeckungssatz	Kit cubrecable	Kit cobertura cabo
6	Kit tiranti	Tie rods kit	Kit tirants	Zugstangensatz	Kit tirantes	Kit tirantes
7	Kit guarnizioni OR	O ring kit	Kit joints toriques	O-Ring-Dichtungssatz	Kit juntas tóricas	Kit guarnições OR
8	Bocca di mandata con viti	Discharge head with screws	Orifice de refoulement avec vis	Druckstutzen mit Schrauben	Boca de impulsión con tornillos	Bocal de compressão com parafusos
9	Supporto inferiore con filtro	Lower support with strainer	Support inférieure avec filtre	Untere Halterung mit Filter	Soporte inferior con filtro	Suporte inferior com filtro
10	Girante	Impeller	Roue	Laufrad	Rodete	Impulsor
11	Diffusore	Diffuser	Diffuseur	Diffusor	Difusor	Difusor
12	Diffusore / Stadio boccola widia	Tungsten / Stage bush diffuser	Diffuseur / Étage Widia	Diffusor / Stufe mit Widia	Difusor / Etapa casquillo widia	Difusor / Célula bucha widia
13	Stadio iniziale	Initial stage	Premier étage	Erste Stufe	Etapa inicial	Primeira célula
14	Filtro	Strainer	Filtre	Filter	Filtro	Filtro
15	Albero	Shaft	Arbre	Welle	Árbol	Veio
16	Frenafiletto (da usare per dadi tiranti e grani giunto)	Threadlocker (to be used with tie rods nuts and coupling screws)	Frein-filet (à utiliser pour les boulons, tirants et vis)	Gewindebremse (zu verwenden für Zugstangenmutter und Kupplungsschrauben)	Sujetarrosas (a utilizar para tuercas tirantes y pasadores junta)	Trava rosca (a usar para porcas tirantes e pinos junta)
N.	Descrizione nl	Περιγραφή el	Açıklama tr	Kuvaus fi	Описание ru	Opis pl
1	Set lichte slijtonderdelen	Σετ μερών ελαφράς φθοράς	Hafif aşınma parçası kiti	Kulumisiosien kevyt sarja	Комплект изнашивающихся деталей	Zestaw części podlegających zużyciu (lekkie warunki pracy)
2	Set zware slijtonderdelen	Σετ μερών βαριάς φθοράς	Ağır aşınma parçası kiti	Kulumisiosien raskas sarja	Комплект быстроизнашивающихся деталей	Zestaw części podlegających zużyciu (ciężkie warunki pracy)
3	Klepset	Σετ βαλβίδας	Supap kiti	Venttiilsarja	Комплект клапанов	Zestaw zaworu
4	Koppingsset	Σετ σύζευξη	Kaplin kiti	Liitossarja	Комплект муфт	Zestaw sprzęgła
5	Kabelafdekkingsset	Σετ κάλυμμα καλωδίου	Kablo muhafazası kiti	Kaapelinsuojussarja	Комплект чехлов кабеля	Powłoka kabla sprzęgła
6	Set trekstangen	Σετ ράβδων σύνδεσης	Gergi cubuğu kiti	Vetotankosarja	Комплект соединительных тяг	Zestaw napinaczy
7	Set O-ringafdichtingen	Σετ σιμωχών OR	O-Ring kiti	O-rengassarja	Комплект уплотнительных колец	Zestaw uszczelek O-Ring
8	Persopening met schroeven	Στόμιο αποστολής με βίδες	Basma borusunun ağzi ve vidalar	Poistoaukko ja ruuvit	Напорная головка с винтами	Głowica ze śrubami
9	Onderste steun met filter	Κάτω έδρανο με φίλτρο	Alt mesnet ve filtresi	Alakannatin ja suodatin	Нижняя опора с фильтром	Podstawa dolna wraz z filtrem
10	Waaier	Πτερύγιο	Pompa çarkı	Juoksupyörä	Рабочее колесо	Wirnik
11	Diffusor	Διάταξη διάχυσης	Difüzör	Diffusori	Диффузор	Dyfuzor
12	Widia diffusorbus / trap	Διάταξη διάχυση / στάδιο στομίου widia	Tungsten difüzör / kademe	Diffusori / laatikko ja kovametalliholkki	Диффузор / стадия куста вольфрама	Stopień / Dyfuzor (wolframowe)
13	Kast eerste trap	Αρχικό στάδιο	İlk kademe	Ensivaiheen laatikko	Начальная стадия	Stopień początkowy
14	Filter	Φίλτρο	Filtre	Suodatin	Фильтр	Filtr
15	As	Άξονας	Mil	Akseli	Вал	Wał
16	Draadborgmiddel (te gebruiken voor moeren trekstangen en stiften koppeling)	Μπλοκάρισμα σπειρώματος (προς χρήση σε παξιμάδια ένωσης και στοιχεία άρθρωσης)	Vida gevmezlik (gergi cubuğu somunları ve bağlama vidaları ile kullanılabaktır)	Kierrelukite (vetotankojen muttereille ja liitoksen vaarinoille)	Клей для резьбовых соединений (использовать для гаек соединительных тяг и соединительных винтов)	Płyn do unieruchomiania śrub i wkrętów. (używane do śrub, złączy i sprzęgieł)

## Z 612

Z - Series 3 ~										
4" ->	Z612 01-4	Z612 02-4	Z612 03-4	Z612 04-4	Z612 05-4	Z612 06-4	Z612 07-4	Z612 08-4	Z612 09-4	Z612 10-4
	102L00000	102L00010	102L00020	102L00030	102L00040	102L00050	102L00060	102L00070	102L00080	102L00090
4" ->	Z612 11-4	Z612 12-4	Z612 13-4	Z612 14-4	Z612 15-4					
	102L00100	102L00110	102L00120	102L00130	102L00140					
6" ->							Z612 07-6	Z612 08-6	Z612 09-6	Z612 10-6
							102L00300	102L00310	102L00320	102L00330
6" ->	Z612 11-6	Z612 12-6	Z612 13-6	Z612 14-6	Z612 15-6	Z612 16-6	Z612 17-6	Z612 18-6	Z612 19-6	Z612 20-6
	102L00340	102L00350	102L00360	102L00370	102L00380	102L00390	102L00400	102L00410	102L00420	102L00430
6" ->	Z612 21-6	Z612 22-6	Z612 23-6	Z612 24-6	Z612 25-6	Z612 26-6	Z612 27-6	Z612 28-6	Z612 29-6	Z612 30-6
	102L00440	102L00450	102L00460	102L00470	102L00480	102L00490	102L00500	102L00510	102L00520	102L00530
6" ->	Z612 31-6	Z612 32-6	Z612 33-6	Z612 34-6	Z612 35-6	Z612 36-6	Z612 37-6	Z612 38-6	Z612 39-6	
	102L00540	102L00550	102L00560	102L00570	102L00580	102L00590	102L00600	102L00610	102L00620	
Motor power kW >	0,55	1,1	1,5	2,2	3	3	4	4	5,5	5,5
	5,5	7,5	7,5	7,5	7,5					
							4	4	5,5	5,5
	5,5	7,5	7,5	7,5	7,5	9,3	9,3	9,3	9,3	11
	11	11	11	13	13	13	13	15	15	15
	15	18,5	18,5	18,5	18,5	18,5	18,5	18,5	18,5	

### Wear parts kits

	->Z612/8	-> Z612/15	->Z612/22	->Z612/28	->Z612/35	->Z612/39
	1 bearing Widia	1 bearing Widia	1 bearing Widia	2 bearing Widia	2 bearing Widia	3 bearing Widia
*1	Wear parts light (duty work) kit		KL03AAT	KL03AAU	KL03AAV	KL03AAW
2	Wear parts heavy (duty work) kit		KL35AB0	KL35AB1	KL35AB2	KL35AB3
			KL35AB4	KL35AB5	KL35AB6	KL35AB7

### Kit and Single Unit

Stages number	1	2	3	4	5	6	7	8	9	10
	11	12	13	14	15					
							7	8	9	10
	11	12	13	14	15	16	17	18	19	20
	21	22	23	24	25	26	27	28	29	30
	31	32	33	34	35	36	37	38	39	
5 Cable guard kit >	304 SS									
	KL14AAA	KL14AAB	KL14AAC	KL14AAD	KL14AAE	KL14AAF	KL14AAG	KL14AAH	KL14AAK	KL14AAL
	KL14AAM	KL14AAN	KL14AAP	KL14AAQ	KL14AAR					
							KL14AAG	KL14AAH	KL14AAK	KL14AAL
	KL14AAM	KL14AAN	KL14AAP	KL14AAQ	KL14AAR	KL14AAS	KL14AAT	KL14AAU	KL14AAV	KL14AAW
	KL14AAX	KL14AAY	KL14AAZ	KL14AA0	KL14AA1	KL14AA2	KL14AA3	KL14AA4	KL14AA5	KL14AA6
	KL14AA7	KL14AA8	KL14AA9	KL14ABA	KL14ABB	KL14ABC	KL14ABD	KL14ABE	KL14ABF	
6 Tie rods kit >	Strips, 304 SS									
	KL22ADL	KL22ADM	KL22ADN	KL22ADP	KL22ADQ	KL22ADR	KL22ADS	KL22ADT	KL22ADU	KL22ADV
	KL22ADW	KL22ADX	KL22ADY	KL22ADZ	KL22AD0					
							KL22ADS	KL22ADT	KL22ADU	KL22ADV
	KL22ADW	KL22ADX	KL22ADY	KL22ADZ	KL22AD0	KL22AD1	KL22AD2	KL22AD3	KL22AD4	KL22AD5
	KL22AD6	KL22AD7	KL22AD8	KL22AD9	KL22AEA	KL22AEB	KL22AEC	KL22AED	KL22AEE	KL22AEF
	KL22AEG	KL22AEH	KL22AEK	KL22AEL	KL22AEM	KL22AEN	KL22AEP	KL22AEQ	KL22AER	
15 Shaft >	431 SS									
	165047020	165047060	165047080	165047120	165047140	165047160	165047200	165047220	165047240	165047280
	165047300	165047340	165047380	165047400	165047420					
							165047200	165047220	165047240	165047280
	165047300	165047340	165047380	165047400	165047420	165047460	165047500	165047520	165047560	165047580
	165047600	165047640	165047680	165047720	165047740	165047780	165047820	165047840	165047860	165047900
	165047940	165047960	165048000	165048020	165048040	165048100	165048120	165048160	165048180	

### Common, Kit and Single Unit

3	Valve Kit	KL52AAF	304 SS
4	4" Coupling kit	KL10ABN	
	6" Coupling kit	KL10ABP	431SS
*7	O-Ring Kit	KL02ABC	EPDM
8	2" 1/2 Discharge head with screw	151403900	CF-8 SS
9	4" Lower support wih strainer	151403920	
	6" Lower support wih strainer	151403930	CF-8 SS
10	Impeller	150702900	
11	Diffuser	152802010	
13	Initial Stage	152802250	
14	Strainer	164601010	304 SS
12	Widia Diffuser Z612-616	152802370	TUNGST CARB
16*	Thredlocker	002982129	Use: with tie rods nuts and coupling screws. Observe precaution, cause irritation.

\* Recommended spare parts - Parti di ricambio consigliate  
\* Pièces détachées conseillées - Empfohlene Ersatzteile

## Z 616

Production date > 04/2007

Z - Series 3 ~										
4" ->	Z616 01-4	Z616 02-4	Z616 03-4	Z616 04-4	Z616 05-4	Z616 06-4	Z616 07-4	Z616 08-4	Z616 09-4	Z616 10-4
	102L01020	102L01030	102L01040	102L01050	102L01060	102L01070	102L01080	102L01090	102L01100	102L01110
6" ->					Z616 05-6	Z616 06-6	Z616 07-6	Z616 08-6	Z616 09-6	Z616 10-6
					102L01220	102L01230	102L01240	102L01250	102L01260	102L01270
6" ->	Z616 11-6	Z616 12-6	Z616 13-6	Z616 14-6	Z616 15-6	Z616 16-6	Z616 17-6	Z616 18-6	Z616 19-6	Z616 20-6
	102L01280	102L01290	102L01300	102L01310	102L01320	102L01330	102L01340	102L01350	102L01360	102L01370
6" ->	Z616 21-6	Z616 22-6	Z616 23-6	Z616 24-6	Z616 25-6	Z616 26-6	Z616 27-6	Z616 28-6	Z616 29-6	Z616 30-6
	102L01380	102L01390	102L01400	102L01410	102L01420	102L01430	102L01440	102L01450	102L01460	102L01470
6" ->	Z616 31-6	Z616 32-6	Z616 33-6	Z616 34-6	Z616 35-6	Z616 36-6				
	102L01480	102L01490	102L01500	102L01510	102L01520	102L01530				
Motor power kW >	0,75	1,5	2,2	3	4	5,5	5,5	7,5	7,5	7,5
					4	5,5	5,5	7,5	7,5	7,5
	9,3	9,3	11	11	13	13	13	13	15	15
	18,5	18,5	18,5	18,5	18,5	22	22	22	22	22
	26	26	26	26	26	26				

### Wear parts kits

		->Z616/8	-> Z616/15	->Z616/22	->Z616/28	->Z616/35	->Z616/36
		1 bearing Widia	1 bearing Widia	1 bearing Widia	2 bearing Widia	2 bearing Widia	3 bearing Widia
*1	Wear parts light (duty work) kit	KL03AAT	KL03AAU	KL03AAV	KL03AAW	KL03AAX	KL03AAZ
2	Wear parts heavy (duty work) kit	KL35AB0	KL35AB1	KL35AB2	KL35AB3	KL35AB4	KL35AB6

### Kit and Single Unit

	Stages number	1	2	3	4	5	6	7	8	9	10
			11	12	13	14	15	16	17	18	19
	21	22	23	24	25	26	27	28	29	30	
	31	32	33	34	35	36					
5	Cable guard kit >	304 SS									
		KL14AAA	KL14AAB	KL14AAC	KL14AAD	KL14AAE	KL14AAF	KL14AAG	KL14AAH	KL14AAK	KL14AAL
						KL14AAE	KL14AAF	KL14AAG	KL14AAH	KL14AAK	KL14AAL
		KL14AAM	KL14AAN	KL14AAP	KL14AAQ	KL14AAR	KL14AAS	KL14AAT	KL14AAU	KL14AAV	KL14AAW
		KL14AAX	KL14AAY	KL14AAZ	KL14AA0	KL14AA1	KL14AA2	KL14AA3	KL14AA4	KL14AA5	KL14AA6
6	Tie rods kit >	Strips, 304 SS									
		KL22ADL	KL22ADM	KL22ADN	KL22ADP	KL22ADQ	KL22ADR	KL22ADS	KL22ADT	KL22ADU	KL22ADV
						KL22ADQ	KL22ADR	KL22ADS	KL22ADT	KL22ADU	KL22ADV
		KL22ADW	KL22ADX	KL22ADY	KL22ADZ	KL22AD0	KL22AD1	KL22AD2	KL22AD3	KL22AD4	KL22AD5
		KL22AD6	KL22AD7	KL22AD8	KL22AD9	KL22AEA	KL22AEB	KL22AEC	KL22AED	KL22AEE	KL22AEF
15	Shaft >	431 SS									
		165047020	165047060	165047080	165047120	165047140	165047160	165047200	165047220	165047240	165047280
						165047140	165047160	165047200	165047220	165047240	165047280
		165047300	165047340	165047380	165047400	165047420	165047460	165047500	165047520	165047560	165047580
		165047600	165047640	165047680	165047720	165047740	165047780	165047820	165047840	165047860	165047900
	165047940	165047960	165048000	165048020	165048040	165048100					

### Common, Kit and Single Unit

3	Valve Kit	KL52AAF	304 SS
4	4" Coupling kit	KL10ABN	431 SS
	6" Coupling kit	KL10ABP	
*7	O-Ring Kit	KL02ABC	EPDM
8	2" 1/2 Discharge head with screw	151403900	CF-8 SS
9	4" Lower support wih strainer	151403920	CF-8 SS
	6" Lower support wih strainer	151403930	
10	Impeller	150702910	
11	Diffuser	152802010	
13	Initial Stage	152802250	
14	Strainer	164601010	304 SS
12	Widia Diffuser Z612-616	152802370	TUNGST CARB
16*	Thredlocker	002982129	Use: with tie rods nuts and coupling screws. Observe precaution, cause irritation.

\* Recommended spare parts - Parti di ricambio consigliate

\* Pièces détachées conseillées - Empfohlene Ersatzteile

Z612-660\_5\_Apr07\_EdD

## Z 622

Production date > 04/2007

Z - Series 3 ~										
4" ->	Z622 01-4	Z622 02-4	Z622 03-4	Z622 04-4	Z622 05-4	Z622 06-4	Z622 07-4			
	102L01930	102L01940	102L01950	102L01960	102L01970	102L01980	102L01990			
6" ->				Z622 04-6	Z622 05-6	Z622 06-6	Z622 07-6	Z622 08-6	Z622 09-6	Z622 10-6
				102L02080	102L02090	102L02100	102L02110	102L02120	102L02130	102L02140
6" ->	Z622 11-6	Z622 12-6	Z622 13-6	Z622 14-6	Z622 15-6	Z622 16-6	Z622 17-6	Z622 18-6	Z622 19-6	Z622 20-6
	102L02150	102L02160	102L02170	102L02180	102L02190	102L02200	102L02210	102L02220	102L02230	102L02240
6" ->	Z622 21-6	Z622 22-6	Z622 23-6	Z622 24-6	Z622 25-6	Z622 26-6	Z622 27-6	Z622 28-6	Z622 29-6	Z622 30-6
	102L02250	102L02260	102L02270	102L02280	102L02290	102L02300	102L02310	102L02320	102L02330	102L02340
	Z622 31-6	Z622 32-6	Z622 33-6							
	102L02350	102L02360	102L02370							
Motor power kW >	1,1	2,2	3	4	5,5	7,5	7,5			
				4	5,5	7,5	7,5	9,3	9,3	11
	11	13	13	15	15	18,5	18,5	18,5	22	22
	22	22	26	26	26	26	30	30	30	30
	37	37	37							

### Wear parts kits

		->Z622/9	-> Z622/13	->Z622/18	->Z622/22	->Z622/28	->Z622/33
		1 bearing Widia	1 bearing Widia	2 bearing Widia	2 bearing Widia	2 bearing Widia	3 bearing Widia
*1	Wear parts light (duty work) kit	KL03AA0	KL03AA1	KL03AA2	KL03AA3	KL03AA4	KL03AA5
2	Wear parts heavy (duty work) kit	KL35AB7	KL35AB8	KL35AB9	KL35ACA	KL35ACB	KL35ACC

### Kit and Single Unit

	Stages number	1	2	3	4	5	6	7	8	9	10	
						4	5	6	7	8	9	10
			11	12	13	14	15	16	17	18	19	20
			21	22	23	24	25	26	27	28	29	30
			31	32	33							
5	Cable guard kit >	304 SS										
		KL14ABG	KL14AAB	KL14ABH	KL14AAE	KL14ABK	KL14AAH	KL14ABL				
					KL14AAE	KL14ABK	KL14AAH	KL14ABL	KL22AD4	KL22AEZ	KL22AD8	
		KL14ABN	KL14AAT	KL14ABP	KL14AAW	KL14ABQ	KL14ABR	KL14ABS	KL14AA1	KL14ABT	KL14AA4	
		KL14ABU	KL14AA7	KL14ABV	KL14ABA	KL14ABW	KL14ABC	KL14ABX	KL14ABF	KL14ABY	KL14ABZ	
		KL14AB0	KL14AB1	KL14AB2								
6	Tie rods kit>	Strips, 304 SS										
		KL22AES	KL22ADM	KL22AET	KL22ADQ	KL22AEU	KL22ADT	KL22AEV				
					KL22ADQ	KL22AEU	KL22ADT	KL22AEV	KL22ADW	KL22AEW	KL22ADZ	
		KL22AEX	KL22AD2	KL22AEY	KL22AD5	KL22AEZ	KL22AE0	KL22AE1	KL22AEA	KL22AE2	KL22AED	
		KL22AE3	KL22AEG	KL22AE4	KL22AEL	KL22AE5	KL22AEN	KL22AE6	KL22AER	KL22AE7	KL22AE8	
		KL22AE9	KL22AFA	KL22AFB								
15	Shaft >	431SS										
		165047000	165047060	165047100	165047140	165047180	165047220	165047260				
					165047140	165047180	165047220	165047260	165047300	165047360	165047400	
		165047440	165047500	165047540	165047580	165047620	165047660	165047700	165047740	165047800	165047840	
		165047880	165047940	165047980	165048020	165048060	165048100	165048140	165048180	165048240	165048280	
		165048320	165048380	165048420								

### Common, Kit and Single Unit

3	Valve Kit	KL52AAF	304 SS
4	4" Coupling kit	KL10ABN	
	6" Coupling kit	KL10ABP	431SS
*7	O-Ring Kit	KL02ABC	EPDM
8	2" 1/2 Discharge head with screw	151403900	CF-8 SS
9	4" Lower support wih strainer	151403920	
	6" Lower support wih strainer	151403930	CF-8 SS
10	Impeller	150702920	
11	Diffuser	152802030	
13	Initial Stage	152802270	
14	Strainer	164601010	304 SS
12	Widia Diffuser Z622-631	152802150	TUNGST CARB

16*	Thredlocker	002982129	Use: with tie rods nuts and coupling screws. Observe precaution, cause irritation.
-----	-------------	-----------	--

\* Recommended spare parts - Parti di ricambio consigliate

\* Pièces détachées conseillées - Empfohlene Ersatzteile

Z612-660\_5\_Apr07\_EdD

## Z 631

Production date > 04/2007

Z - Series 3 ~										
4" ->	Z631 01-4	Z631 02-4	Z631 03-4	Z631 04-4	Z631 05-4	Z631 06-4				
	102L02720	102L02730	102L02740	102L02750	102L02760	102L02770				
6" ->			Z631 03-6	Z631 04-6	Z631 05-6	Z631 06-6	Z631 07-6	Z631 08-6	Z631 09-6	Z631 10-6
			102L02830	102L02840	102L02850	102L02860	102L02870	102L02880	102L02890	102L02900
6" ->	Z631 11-6	Z631 12-6	Z631 13-6	Z631 14-6	Z631 15-6	Z631 16-6	Z631 17-6	Z631 18-6	Z631 19-6	Z631 20-6
	102L02910	102L02920	102L02930	102L02940	102L02950	102L02960	102L02970	102L02980	102L02990	102L03000
6" ->	Z631 21-6	Z631 22-6	Z631 23-6	Z631 24-6	Z631 25-6	Z631 26-6	Z631 27-6	Z631 28-6	Z631 29-6	
	102L03010	102L03020	102L03030	102L03040	102L03050	102L03060	102L03070	102L03080	102L03090	
Motor power kW >	1,5	3	4	5,5	7,5	7,5				
			4	5,5	7,5	7,5	9,3	11	11	13
	15	18,5	18,5	18,5	22	22	22	26	26	26
	30	30	30	37	37	37	37	37	37	

### Wear parts kits

		->Z631/9	-> Z631/13	->Z631/18	->Z631/22	->Z631/28	->Z631/29
		1 bearing Widia	1 bearing Widia	2 bearing Widia	2 bearing Widia	2 bearing Widia	3 bearing Widia
*1	Wear parts light (duty work) kit	KL03AA0	KL03AA1	KL03AA2	KL03AA3	KL03AA4	KL03AA6
2	Wear parts heavy (duty work) kit	KL35AB7	KL35AB8	KL35AB9	KL35ACA	KL35ACB	KL35ACD

### Kit and Single Unit

	Stages number	1	2	3	4	5	6	7	8	9	10
			11	12	13	14	15	16	17	18	19
		21	22	23	24	25	26	27	28	29	
5	Cable guard kit >	304 SS									
		KL14ABG	KL14AAB	KL14ABH	KL14AAE	KL14ABK	KL14AAH				
				KL14ABH	KL14AAE	KL14ABK	KL14AAH	KL14ABL	KL14AAM	KL14ABM	KL14AAQ
		KL14ABN	KL14AAT	KL14ABP	KL14AAW	KL14ABQ	KL14ABR	KL14ABS	KL14AA1	KL14ABT	KL14AA4
		KL14ABU	KL14AA7	KL14ABV	KL14ABA	KL14ABW	KL14ABC	KL14ABX	KL14ABF	KL14ABY	
6	Tie rods >	Strips, 304 SS									
		KL22AES	KL22ADM	KL22AET	KL22ADQ	KL22AEU	KL22ADT				
				KL22AET	KL22ADQ	KL22AEU	KL22ADT	KL22AEV	KL22ADW	KL22AEW	KL22ADZ
		KL22AEX	KL22AD2	KL22AEY	KL22AD5	KL22AEZ	KL22AE0	KL22AE1	KL22AEA	KL22AE2	KL22AED
		KL22AE3	KL22AEG	KL22AE4	KL22AEL	KL22AE5	KL22AEN	KL22AE6	KL22AER	KL22AE7	
15	Shaft >	431SS									
		165047000	165047060	165047100	165047140	165047180	165047220				
				165047100	165047140	165047180	165047220	165047260	165047300	165047360	165047400
		165047440	165047500	165047540	165047580	165047620	165047660	165047700	165047740	165047800	165047840
		165047880	165047940	165047980	165048020	165048060	165048100	165048140	165048180	165048240	

### Common, Kit and Single Unit

3	Valve Kit	KL52AAF	304 SS
4	4" Coupling kit	KL10ABN	431SS
	6" Coupling kit	KL10ABP	
*7	O-Ring Kit	KL02ABC	EPDM
8	3" Discharge head with screw	151403910	CF-8 SS
9	4" Lower support wih strainer	151403920	CF-8 SS
	6" Lower support wih strainer	151403930	
10	Impeller	150702930	
11	Diffuser	152802030	
13	Initial stage	152802270	
14	Strainer	164601010	304 SS
12	Widia Diffuser Z622-631	152802150	TUNGST CARB
16*	Thredlocker	002982129	Use: with tie rods nuts and coupling screws. Observe precaution, cause irritation.

\* Recommended spare parts - Parti di ricambio consigliate

\* Pièces détachées conseillées - Empfohlene Ersatzteile

Z612-660\_5\_Apr07\_EdD

## Z 646

Production date > 04/2007

Z - Series 3 ~										
4" ->	Z646 01-4	Z646 02-4	Z646 03-4	Z646 04-4	Z646 05-4					
	102L03310	102L03320	102L03330	102L03340	102L03350					
6" ->			Z646 03-6	Z646 04-6	Z646 05-6	Z646 06-6	Z646 07-6	Z646 08-6	Z646 09-6	Z646 10-6
			102L03410	102L03420	102L03430	102L03440	102L03450	102L03460	102L03470	102L03480
6" ->	Z646 11-6	Z646 12-6	Z646 13-6	Z646 14-6	Z646 15-6	Z646 16-6	Z646 17-6	Z646 18-6	Z646 19-6	Z646 20-6
	102L03490	102L03500	102L03510	102L03520	102L03530	102L03540	102L03550	102L03560	102L03570	102L03580
6" ->	Z646 21-6	Z646 22-6	Z646 23-6	Z646 24-6	Z646 25-6					
	102L03590	102L03600	102L03610	102L03620	102L03630					
Motor power kW >	1,5	3	5,5	7,5	7,5					
			5,5	7,5	7,5	9,3	11	13	13	15
	18,5	18,5	22,0	22,0	22,0	26,0	26,0	30,0	30,0	30,0
	37,0	37,0	37,0	37,0	37,0					

### Wear parts kits

	->Z646/5	->Z646/9	->Z646/15	->Z646/21	->Z646/25
	1 bearing Widia	1 bearing Widia	2 bearing Widia	3 bearing Widia	4 bearing Widia
*1	Wear parts light (duty work) kit	KL03AA7	KL03AA8	KL03AA9	KL03ABA
2	Wear parts heavy (duty work) kit	KL35ACE	KL35ACF	KL35ACG	KL35ACH

### Kit and Single Unit

Stages number	1	2	3	4	5					
			3	4	5	6	7	8	9	10
	11	12	13	14	15	16	17	18	19	20
	21	22	23	24	25					
5 Cable guard kit > 304 SS	KL14AB3	KL14AAD	KL14ABK	KL14AAK	KL14AB4					
			KL14ABK	KL14AAK	KL14AB4	KL14AAQ	KL14AB5	KL14AAV	KL14ABQ	KL14AAZ
	KL14AB6	KL14AA4	KL14AB7	KL14AA9	KL14ABW	KL14ABD	KL14AB8	KL14ABZ	KL14AB9	KL14ACA
	KL14ACB	KL14ACC	KL14ACD	KL14ACE	KL14ACF					
6 Tie rods kit >	304 SS									
	KL22AFC	KL22ADP	KL22AEU	KL22ADU	KL22AFD					
			KL22AEU	KL22ADU	KL22AFD	KL22ADZ	KL22AFE	KL22AD4	KL22AEZ	KL22AD8
	KL22AFF	KL22AED	KL22AFG	KL22AEK	KL22AE5	KL22AEP	KL22AFH	KL22AE8	KL22AFK	KL22AFL
15 Shaft >	431 SS									
	165047040	165047120	165047180	165047240	165047320					
			165047180	165047240	165047320	165047400	165047480	165047560	165047620	165047680
	165047760	165047840	165047920	165048000	165048060	165048120	165048200	165048280	165048360	165048440
	165048500	165048560	165048640	165048720	165048800					

### Common, Kit and Single Unit

3	Valve Kit	KL52AAF	304 SS
4	4" Coupling kit	KL10ABN	431 SS
	6" Coupling kit	KL10ABP	
*7	O-Ring Kit	KL02ABC	EPDM
8	3" Discharge head with screw	151403910	CF-8 SS
9	4" Lower support wih strainer	151403920	CF-8 SS
	6" Lower support wih strainer	151403930	
10	Impeller	150702940	
11	Diffuser	152802050	
13	Initial stage	152802290	
14	Strainer	164601010	304 SS
12	Widia Diffuser Z646-660	152802170	TUNGST CARB
16*	Thredlocker	002982129	Use: with tie rods nuts and coupling screws. Observe precaution, cause irritation.

\* Recommended spare parts - Parti di ricambio consigliate

\* Pièces détachées conseillées - Empfohlene Ersatzteile

Z612-660\_5\_Apr07\_EdD

## Z 660

Production date > 04/2007

Z - Series 3 ~										
4" ->	Z660 01-4	Z660 02-4	Z660 03-4	Z660 04-4						
	102L03880	102L03890	102L03900	102L03910						
6" ->	Z660 02-6	Z660 03-6	Z660 04-6	Z660 05-6	Z660 06-6	Z660 07-6	Z660 08-6	Z660 09-6	Z66010-6	
	102L03970	102L03980	102L03990	102L04000	102L04010	102L04020	102L04030	102L04040	102L04050	
6" ->	Z660 11-6	Z660 12-6	Z660 13-6	Z660 14-6	Z660 15-6	Z660 16-6	Z660 17-6	Z660 18-6	Z660 19-6	Z66020-6
	102L04060	102L04070	102L04080	102L04090	102L04100	102L04110	102L04120	102L04130	102L04140	102L04150
	Z660 21-6									
	102L04160									
Motor power kW >	2,2	4	5,5	7,5						
		4	5,5	7,5	9,3	11	13	15	18,5	18,5
	22	22	22	26	26	30	30	37	37	37
	37									

### Wear parts kits

		->Z660/5	->Z660/9	->Z660/15	->Z660/21
		1 bearing Widia	1 bearing Widia	2 bearing Widia	3 bearing Widia
*1	Wear parts light (duty work) kit	KL03AA7	KL03AA8	KL03AA9	KL03ABA
2	Wear parts heavy (duty work) kit	KL35ACE	KL35ACF	KL35ACG	KL35ACH

### Kit and Single Unit

	Stages number	1	2	3	4						
			2	3	4	5	6	7	8	9	10
		11	12	13	14	15	16	17	18	19	20
		21									
5	Cable guard kit > 304 SS	KL14AB3	KL14AAD	KL14ABK	KL14AAK						
			KL14AAD	KL14ABK	KL14AAK	KL14AB4	KL14AAQ	KL14AB5	KL14AAV	KL14ABQ	KL14AAZ
		KL14AB6	KL14AA4	KL14AB7	KL14AA9	KL14ABW	KL14ABD	KL14AB8	KL14ABZ	KL14AB9	KL14ACA
		KL14ACB									
6	Tie rods kit >	304 SS									
		KL22AFC	KL22ADP	KL22AEU	KL22ADU						
			KL22ADP	KL22AEU	KL22ADU	KL22AFD	KL22ADZ	KL22AFE	KL22AD4	KL22AEZ	KL22AD8
		KL22AFF	KL22AED	KL22AFG	KL22AEK	KL22AE5	KL22AEP	KL22AFH	KL22AE8	KL22AFK	KL22AFL
		KL22AFM									
15	Shaft >	431 SS									
		165047040	165047120	165047180	165047240						
			165047120	165047180	165047240	165047320	165047400	165047480	165047560	165047620	165047680
		165047760	165047840	165047920	165048000	165048060	165048120	165048200	165048280	165048360	165048440
		165048500									

### Common, Kit and Single Unit

3	Valve Kit	KL52AAF	304 SS
4	4" Coupling kit	KL10ABN	431 SS
	6" Coupling kit	KL10ABP	
*7	O-Ring Kit	KL02ABC	EPDM
8	3" Discharge head with screw	151403910	CF-8 SS
9	4" Lower support wih strainer	151403920	CF-8 SS
	6" Lower support wih strainer	151403930	
10	Impeller	150702950	
11	Diffuser	152802050	
13	Initial stage	152802290	
14	Strainer	164601010	304 SS
12	Widia Diffuser Z646-660	152802170	TUNGST CARB
16*	Thredlocker	002982129	Use: with tie rods nuts and coupling screws. Observe precaution, cause irritation.

\* Recommended spare parts - Parti di ricambio consigliate

\* Pièces détachées conseillées - Empfohlene Ersatzteile

Z612-660\_5\_Apr07\_EdD

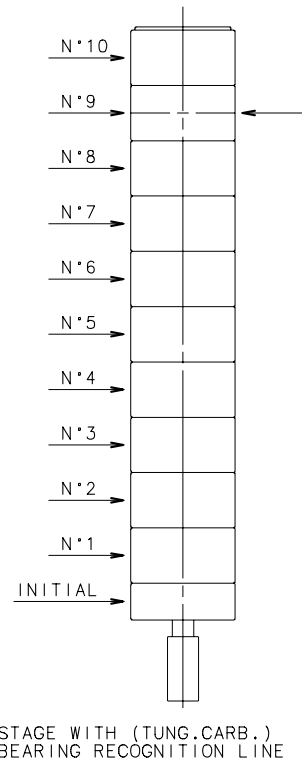


## New Z612 - Z660 Pumps 50Hz: Diffuser with bearing position

Z612 - Z616 50 Hz			
Z612 imp. n.	Z616 imp. n.	stage with widia bearing position	stage with widia bearing number
1	1	N. 2	1
2	2	N. 3	
3	3	N. 4	
4	4	N. 5	
5	5	N. 6	
6	6	N. 6	
7	7	N. 7	
8	8	N. 8	
9	9	N. 9	
10	10	N. 10	
11	11	N. 10	
12	12	N. 11	
13	13	N. 12	
14	14	N. 13	
15	15	N. 13	
16	16	N. 14	
17	17	N. 15	
18	18	N. 16	
19	19	N. 16	
20	20	N. 17	
21	21	N. 18	
22	22	N. 18	
23	23	N. 10 - 24	2
24	24	N. 11 - 25	
25	25	N. 11 - 26	
26	26	N. 12 - 27	
27	27	N. 12 - 27	
28	28	N. 13 - 28	
29	29	N. 13 - 29	
30	30	N. 13 - 29	
31	31	N. 13 - 30	
32	32	N. 14 - 31	
33	33	N. 14 - 31	
34	34	N. 15 - 32	
35	35	N. 15 - 33	
36	36	N. 10 - 24 - 38	3
37		N. 10 - 25 - 39	
38		N. 10 - 25 - 39	
39		N. 10 - 25 - 39	

Z622 - Z631 50 Hz			
Z622 imp. n.	Z631 imp. n.	stage with widia bearing position	stage with widia bearing number
1	1	N. 1	1
2	2	N. 2	
3	3	N. 3	
4	4	N. 4	
5	5	N. 4	
6	6	N. 5	
7	7	N. 6	
8	8	N. 7	
9	9	N. 8	
10	10	N. 9	
11	11	N. 9	
12	12	N. 10	
13	13	N. 10	
14	14	N.6 - 14	2
15	15	N.6 - 14	
16	16	N.7 - 15	
17	17	N.7 - 16	
18	18	N.7 - 17	
19	19	N.8 - 18	
20	20	N.8 - 18	
21	21	N.8 - 19	
22	22	N.9 - 20	
23	23	N.6 - 14 - 22	
24	24	N.6 - 15 - 23	
25	25	N.6 - 15 - 24	
26	26	N.7 - 16 - 25	
27	27	N.7 - 17 - 26	
28	28	N.7 - 17 - 27	
29	29	N.8 - 18 - 28	
30		N.8 - 18 - 28	
31		N.8 - 19 - 29	
32		N.8 - 19 - 30	
33		N.9 - 20 - 31	

Z646 - Z660 50 Hz			
Z646 imp. n.	Z660 imp. n.	stage with widia bearing position	stage with widia bearing number
1	1	N. 1	1
2	2	N. 2	
3	3	N. 3	
4	4	N. 4	
5	5	N. 4	
6	6	N. 5	
7	7	N. 6	
8	8	N. 7	
9	9	N. 7	
10	10	N. 4 - 10	2
11	11	N. 4 - 10	
12	12	N. 5 - 11	
13	13	N. 5 - 12	
14	14	N. 6 - 13	
15	15	N. 6 - 13	
16	16	N. 4 - 10 - 16	3
17	17	N. 4 - 10 - 16	
18	18	N. 4 - 11 - 17	
19	19	N. 4 - 11 - 18	
20	20	N. 5 - 12 - 19	
21	21	N. 5 - 12 - 19	
22		N. 4 - 10 - 16 - 22	4
23		N. 4 - 10 - 16 - 22	
24		N. 5 - 11 - 17 - 23	
25		N. 5 - 11 - 18 - 24	



Z612-660\_5\_July07\_EdD

## **KIT available for New Z612 - Z660 Pumps**

### **1) LIGHT wear kit, components: new Z612 - Z660 pumps**

PTFE Thrust bearing  
PPO Wear rings (diffuser, shaft)  
Wear ring covers (diffuser, shaft)  
Imp. washer  
Shaft screw

### **2) HEAVY wear kit, components: new Z612 - Z660 pumps**

Widia Bearings  
Widia Shaft sleeves  
Imp. eye ring  
Spacers (imp., shaft sleeve, 1st stage)  
Thrust bearing support

### **3) Valve, complete**

Seat valve  
Seat ring  
Valve  
D94,92X2,62 EPDM O-Rings  
D78,74X5,34 EPDM O-Rings

### **4) Coupling**

Coupling 4" grain screws  
Coupling 6" grain screws

### **5) Cable guards**

### **6) Tie rods**

### **7) Elastomers**

D25,07X2,62 EPDM O-Rings  
D94,92X2,62 EPDM O-Rings  
D78,74X5,34 EPDM O-Rings