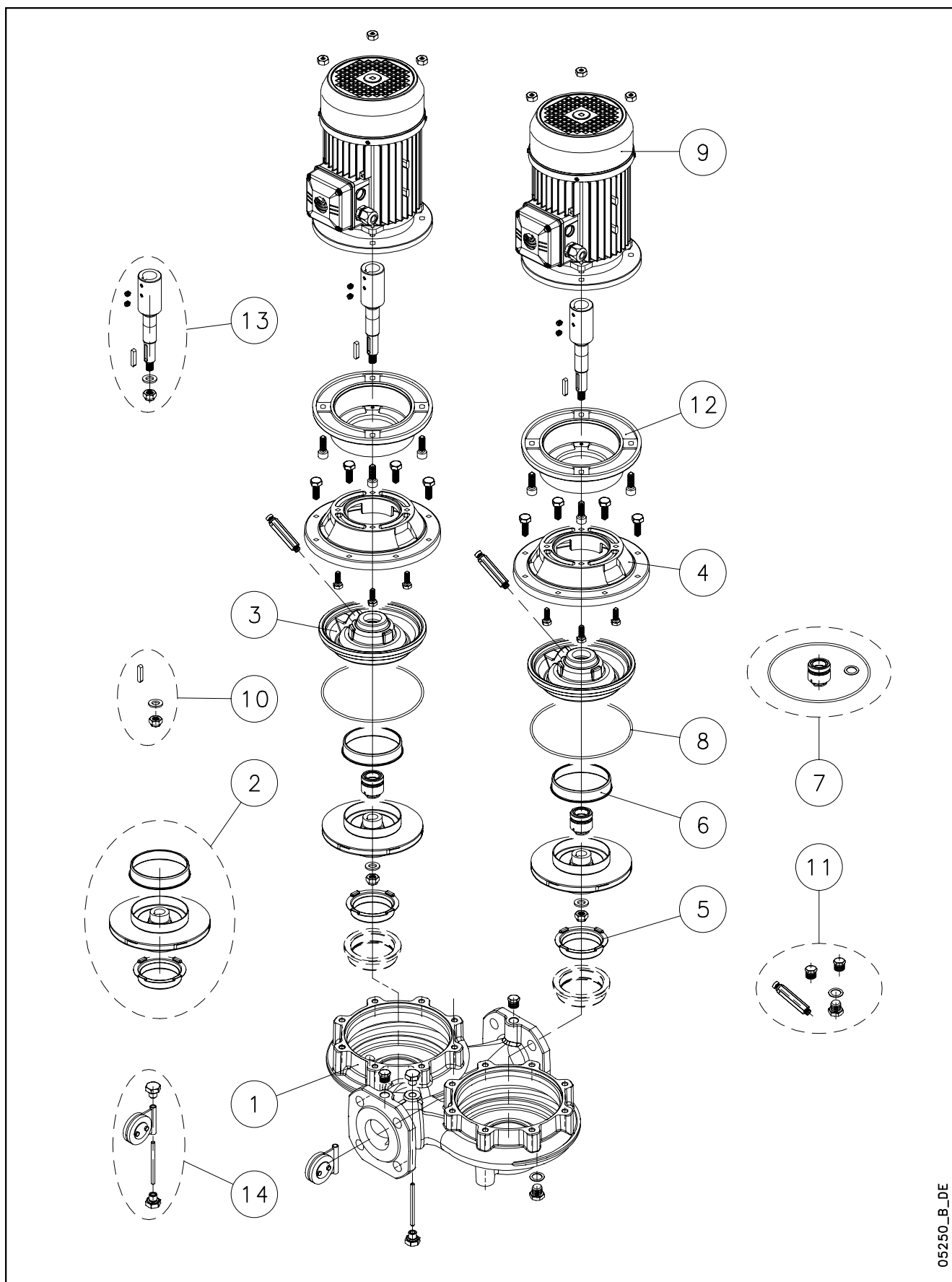


## FCTS-FCTS4 / LHTS-LHTS4 / LRZ-LRZ\_4



05250\_B\_DE

Lowara, Flygt and Vogel Pumpen are a trademark of Xylem Inc. or one of its subsidiaries. Goulds is a registered trademark of Goulds Pumps, Inc. and is used under license.

N.	Descrizione it	Description en	Description fr	Beschreibung de	Descripción es	Descrição pt
1	Corpo pompa completo	Complete pump body	Corps de pompe complete	Kompletter pumpengehäuse	Caja bomba completa	Corpo da bomba complete
2	Girante e anelli di usura	Impeller and wear rings	Roue et anneaux d'usure	Laufrad und Verschleißbringe	Rodete y anillos de desgaste	Impulsor e anéis compensadores de desgaste
3	Disco portatenuta (con anello di usura)	Seal housing disc (with wear ring)	Disque d'étanchéité (avec anneau d'usure)	Dichtungsscheibe (mit Ausgleichsring)	Disco de alojamiento retén (con anillo de desgaste)	Disco porta-vedante(com anel compensadorde desgaste)
4	Lanterna	Adaptor	Lanterne	Antriebslaterne	Adaptador	Adaptador
5	Rasamento anteriore	Front wear plate	Bague pour régulation du jeu axial avant	Vordere Ausgleichsscheibe	Espesor delantero	Casquilho anterior
6	Rasamento posteriore	Back wear plate	Bague pour régulation du jeu axial arrière	Hintere Ausgleichsscheibe	Espesor trasero	Casquilho posterior
7	Tenuta meccanica e guarnizione OR	Mechanical seal and O-Ring	Garniture mécanique et joint torique	Gleitringdichtung und O-Ring	Retén mecánico y aro tórico	Vedante mecânico e vedação OR
8	Guarnizione OR	O-Ring	Joint torique	O-Ring	Aro tórico	Vedação OR
9	Motore completo	Complete motor	Moteur complet	Kompletter Motor	Motor completo	Motor complete
10	Gruppo fissaggio girante (dado, rosetta e linguetta)	Impeller locking group (nut, washer and key)	Groupe de fixation roue (ecrou, rondelle et clavette)	Befestigungsgruppe Laufrads auf (Feststellmutter, Unterlegscheibe und Passfeder)	Grupo de fijación rodete (tuerca, arandela y lengüeta)	Grupo de fixação do impulsor (porca, anilha e lingueta)
11	Valvola e tappi	Valve and plugs	Vanne et bouchons	Ventil und Stutzen	Válvula y tapones	Válvula e tampões
12	Raccordo motore	Motor connector	Raccord moteur	Motoranschluss	Acoplamiento motor	Conexão motor
13	Giunto con gruppo fissaggio girante	Coupling with impeller locking group	Manchon avec groupe de fixation roue	Kupplung mit Befestigungsgruppe Laufrad	Junta con grupo de fijación rodete	Junta com grupo de fixação do impulsor
14	Valvola a clapet	Clapet valve	Vanne à clapet	Scharnierventil	Válvula de clapeta	Válvula de clapet
N.	Beschrijving nl	Περιγραφή el	Açıklama tr	Kuvaus fi	Описание ru	Opis pl
1	Compleet pomphuis	Πλήρες σώμα αντλίας	Komple pompa gövdesi	Täydellinen pumpun runko	Полный корпус насоса	Kompletny korpus pompy
2	Waaier en slijtringen	Πτερόγιο και δακτύλιοι τριβής	Pompa rotoru ve aşınma halkaları	Juoksupyörä ja kulumisrenkaat	Рабочее колесо и изнашиваемые кольца	Wirnik i pierścienie wymienne
3	Dichtingssteunplaat (met slijtring)	Δίσκος μηχανικού στυπιοθλιπτη και δακτύλιος τριβής	Sızdırmazlık diskisi (aşınma halkası ile)	Tiivisteenn kannatuslevy (kulumisrenkaalla)	Диск держателя прокладки (с изнашиваемым кольцом)	Tarcza uszczelki (z wymiennym pierścieniem)
4	Lantaarnstuk	Μπρακέτο	Adaptör	Sovitin	Адаптер	Lampa
5	Voorste schraapring	Πρόσθιος δακτύλιος τριβής	Ön ara halkası	Etuväälilevy	Передняя утолщающая прокладка	Wygładzanie przednie
6	Achterste schraapring	Οπίσθιος δακτύλιος τριβής	Arka ara halkası	Takavälilevy	Задняя утолщающая прокладка	Wygładzanie tylne
7	Mechanische asafdichting en O-ringafdichting	Μηχανικός στυπιοθλιπτης και ροδέλες στεγανοποίησης	Mekanik conta ve O-Ring	Mekaaninen tiiviste ja O-rengas	Механическая прокладка и уплотнение OR	Uszczelnienie mechaniczne i uszczelka O-Ring
8	O-ringafdichting	Ροδέλα στεγανοποίησης	O-Ring	O-rengas	Прокладка OR	Uszczelka O-Ring
9	Complete motor	Πλήρης κινητήρας	Komple motor	Täydellinen moottori	Укомплектованный двигатель	Kompletny silnik
10	Waaierbevestigingsblok (moer, ring en spie)	Σετ ασφάλισης περυγιού (παξιμάδι,ροδέλα,σφήνα)	Pompa rotorunu sabitleme takımı (somon, rondela ve kama)	Juoksupyörän kiinnityskokonaisuus (mutteri, välirengas ja kiila)	Узел фиксации рабочего колеса (гайка, шайба и шпонка)	Zespół mocujący wirnika (nakrętka, podkładka i wpust)
11	Klep en doppen	Βαλβίδα εξαέρωσης και τάπες	Valf ve tapalar	Venttiili ja tulpat	Клапан и заглушки	Zawór i nakrętki
12	Motorverbinding	Έδρανο	Motor bağlanti elemanı	Moottoriliitos	Патрубок двигателя	Złącza silnika
13	Koppeling met waaierbevestigingsblok	Προέκταση άξονα και σετ ασφάλισης περυγιού	Pompa rotorunu sabitleme takımı ile mafsal	Liitos juoksupyörän kiinnityskokonaisuudella	Соединение с узлом фиксации рабочего колеса	Złącze z zespołem mocującym wirnika
14	Terugslagklep	Κλαπέ	Klapeli valf	Läppäventtiili	Клапан и вантуз	Zawór klapowy

## FCTS 40 - FCTS4 40

<b>FCTS</b>	40-125/07/C	40-125/11/C	40-160/15/C	40-160/22/C	40-200/30/P	40-200/40/P	40-200/55/P	40-250/75/P	40-250/110/P
ELP 3 ~,2P, 50	104390900	104390910	104390920	104390930	101261140	101261150	101261160	101261170	101261180
	40-125/07/D	40-125/11/D	40-160/15/D	40-160/22/C	40-200/30/P	40-200/40/P	40-200/55/P	40-250/75/P	40-250/110/P
	104566800	104566810	104566820	104390930	101261140	101261150	101261160	101261170	101261180
kW ->	<b>0,75</b>	<b>1,1</b>	<b>1,5</b>	<b>2,2</b>	<b>3,0</b>	<b>4,0</b>	<b>5,5</b>	<b>7,5</b>	<b>11,0</b>
<b>FCTS4</b>						40-200/05	40-200/07/C	40-250/11/P	40-250/15/P
ELP 3 ~,4P, 50						102181600	104393200	101261620	101261630
kW ->						<b>0,55</b>	<b>0,75</b>	<b>1,1</b>	<b>1,5</b>
	FCTS/D: motors IE3 fitted			FCTS/C, /P: motors IE2 fitted			FCTS: motors IE1 fitted		

### Kit

2*	Impeller 2P	KL04AA9	KL04ABA	KL04ABB	KL04ABC	KL04ABD	KL04ABE	KL04ACK	KL04ACL	KL04ACM
	Impeller 4P						KL04ABE	KL04ACK	KL04ACL	KL04ACM

7*	Materials ->	<b>Q1BEGG</b>	<b>Q1Q1EGG</b>	<b>Q1BVG</b>	<b>Q1Q1VGG</b>	
	Seal D22 kit	KL01ACD	KL01ABZ	KL01ACG	KL01AB5	STD: Seal Q1BEGG - OR EPDM
8*	OR Kit EPDM	KL02AAH	<b>All Versions incl. 3 Dia - OR .</b>			
	OR Kit FPM	KL02AAK	<b>All Versions incl. 3 Dia - OR .</b>			
10	Imp. lock kit M12	KL39AAA				
11	Valves and Plugs	KL34AAA				
14	Reversing flap	KL52AAA	<b>All Versions, DN 40</b>			
13	Coupling D:18	KL10AAH	<b>2P-&gt;125/11</b>	<b>4P-&gt;200/07</b>		
		KL10AAK	<b>2P-&gt;160/22</b>	<b>4P-&gt;250/15</b>		
		KL10AAL	<b>2P-&gt;200/40</b>			
		KL10AAM	<b>2P-&gt;250/75</b>			
		KL10AAN	<b>2P, 250/110</b>			

### Single Unit

1	Pump body	151351200	151351200	151351200	151351200	151351210	151351210	151351210	151351210	151351210
3	Seal-housing disc	160150201	160150201	150150041	150150041	150150071	150150071	150150071	150150071	150150071
4	Adaptor	161430511	161430511	161430511	161430511	161452881	161452881	161452881	161452881	161452881
5	Wear ring	168601491	168601491	168601491	168601491	168601491	168601491	168601491	168601491	168601491
6	Back wear ring			465020201	465020201	465020201	465020201	465020201	465020201	465020201
9**	Motor 3-, 2P	107230520	107230530	50000RB00	50001RB00	50002RE00	50008VE00	50013VE00	50017VB00	50019VE00
		107234030	107234080	107234090	50001RB00	50002RE00	50008VE00	50013VE00	50017VB00	50019VE00
	Motor 3-, 4P						107230740	107241510	50005RB00	50006RB00
12	Mot/connector	167350110	167350110	167350110	167350110	167350160	167350160	167350130	167350130	167350140

Seal housing disc = disc + back wear ring

FCT Imp. Dia. = FC Imp. Dia.

\* Recommended spare parts - Parti di ricambio consigliate

\* Pièces détachées conseillées - Empfohlene Ersatzteile

\*\* Motor spare parts: see motor lists - Parti di ricambio motore: vedi liste motore

\*\* Pièces détachées Moteur : voir listes moteur - Motor-Ersatzteile: gem. Motorlisten

## FCTS 50 - FCTS4 50

<b>FCTSM</b>			50-160/22/P								
ELP 1 ~,2P, 50			101261215								
<b>FCTS</b>	50-125/11/C	50-125/15/C	50-160/22/C	50-160/30/P	50-160/40/P	50-200/55/P	50-200/75/P	50-250/110A/P	50-250/110/P	50-250/150/P	
ELP 3 ~,2P, 50	104390950	104390960	104390970	101261220	101261230	101261240	101261250	101261260	101261270	101261280	
	50-125/11/D	50-125/15/D	50-160/22/C	50-160/30/P	50-160/40/P	50-200/55/P	50-200/75/P	50-250/110A/P	50-250/110/P	50-250/150/P	
	104566890	104566900	104390970	101261220	101261230	101261240	101261250	101261260	101261270	101261280	
kW ->	1,1	1,5	2,2	3,0	4,0	5,5	7,5	11,0	11,0	15,0	
<b>FCTS4</b>						50-200/07/C	50-200/11/P		50-250/15/P	50-250/22/P	
ELP 3 ~,4P,50						104393220	101261650		101261660	101261670	
kW ->						0,75	1,1		1,5	2,2	
			FCTS/D: motors IE3 fitted			FCTS/C, /P: motors IE2 fitted			FCTS: motors IE1 fitted		

### Kit

2*	Impeller 2P	KL04ABF	KL04ABG	KL04ABH	KL04ABK	KL04ABL	KL04ABM	KL04ABN	KL04ABP	KL04ABQ	KL04ABR
	Impeller 4P						KL04ABM	KL04ABN		KL04ABQ	KL04ABR

7*	Material ->	<b>Q1BEGG</b>	<b>Q1Q1EGG</b>	<b>Q1BVG</b>	<b>Q1Q1VGG</b>	2P-> 250/110	STD: Seal Q1BEGG - OR EPDM
	Seal D22 kit	KL01ACD	KL01ABZ	KL01ACG	KL01AB5	4P-> 250/15	
	Material ->	<b>Q1BEGG</b>	<b>Q1Q1EGG</b>	<b>Q1BVG</b>	<b>Q1Q1VGG</b>	2P, 250/150	
	Seal D28 kit	KL01ACE	KL01AB0	KL01ACH	KL01AB6	4P, 250/22	
8*	OR Kit EPDM	KL02AAH	All Versions incl. 3 Dia - OR .				
	OR Kit FPM	KL02AAK	All Versions incl. 3 Dia - OR .				
10	Imp. lock kit M12	KL39AAA	2P->250/110		4P->250/15		
	Imp. lock kit M16	KL39AAB	2P, 250/150		4P, 250/22		
11	Valves and Plugs	KL34AAA					
14	Reversing flap	KL52AAB	All Versions DN 50				
13	Coupling D:18	KL10AAH	2P, 125/11		4P, 200/07		
		KL10AAK	2P->160/22		4P->250/15		
		KL10AAL	2P->160/40				
		KL10AAM	2P->200/75				
	KL10AAN	2P->250/110					
Coupling D:24	KL10AAQ			4P, 250/22			
	KL10AAS	2P, 250/150					

### Single Unit

1	Pump body	151351220	151351220	151351220	151351220	151351220	151351230	151351230	151351240	151351240	
3	Seal-housing disc	160150201	160150201	160150201	150150041	150150041	150150071	150150071	150150071	150150091	
4	Adaptor 2P	161430511	161430511	161430511	161430521	161430521	161452881	161452881	161452881	161452881	
	Adaptor 4P						161452881	161452881	161452881	161452881	
5	Wear ring	168601500	168601500	168601500	168601500	168601500	168601500	168601511	168601511	168601511	
6	Back wear ring				465020201	465020201	465020201	465020201	465020201	465020201	
9**	Motor 1-, 2P			53004HB00							
	Motor 3-, 2P	107230530	50000RB00	50001RB00	50002RE00	50008VE00	50013VE00	50017VB00	50019VE00	50019VE00	50024VB00
		107234080	107234090	50001RB00	50002RE00	50008VE00	50013VE00	50017VB00	50019VE00	50019VE00	50024VB00
Motor 3-, 4P						107241510	50005RB00		50006RB00	50010RB00	
12	Mot/connector 2P	167350110	167350110	167350110	167350120	167350120	167350130	167350140	167350140	167350140	
	Mot/connector 4P						167350150	167350150		167350160	

Seal housing disc = disc + back wear ring

FCT Imp. Dia. = FC Imp. Dia.

\* Recommended spare parts - Parti di ricambio consigliate

\* Pièces détachées conseillées - Empfohlene Ersatzteile

\*\* Motor spare parts: see motor lists - Parti di ricambio motore: vedi liste motore

\*\* Pièces détachées Moteur : voir listes moteur - Motor-Ersatzteile: gem. Motorlisten

## FCTS 65 - FCTS4 65

<b>FCTS</b>	65-125/22/C	65-125/30/P	65-125/40/P	65-160/55/P	65-160/75/P	65-200/110A/P	65-200/110/P	65-250/150/P	65-250/185/P	65-250/220/P
ELP 3 ~, 2P, 50	104391000	101261300	101261310	101261320	101261330	101261340	101261350	101261360	101261370	101261380
kw ->	<b>2,2</b>	<b>3,0</b>	<b>4,0</b>	<b>5,5</b>	<b>7,5</b>	<b>11,0</b>	<b>11,0</b>	<b>15,0</b>	<b>18,5</b>	<b>22,0</b>
<b>FCTS4</b>				65-160/07/C	65-160/11/P		65-200/15/P		65-250/22/P	65-250/30/P
ELP 3 ~, 4P, 50				104393240	101261690		101261700		101261710	101261720
kw ->				<b>0,75</b>	<b>1,1</b>		<b>1,5</b>		<b>2,2</b>	<b>3,0</b>
	FCTS/D: motors IE3 fitted			FCTS/C, /P: motors IE2 fitted			FCTS: motors IE1 fitted			

### Kit

2*	Impeller 2P	KL04ABS	KL04ABT	KL04ABU	KL04ABV	KL04ABW	KL04ABX	KL04ABY	KL04ABZ	KL04AB0	KL04AB1
	Impeller 4P				KL04ABV	KL04ABW		KL04ABY		KL04AB0	KL04AB1

7*	Materials ->	<b>Q1BEGG</b>	<b>Q1Q1EGG</b>	<b>Q1BVG</b>	<b>Q1Q1VGG</b>	2P-> 200/110	STD: Seal Q1BEGG - OR EPDM				
	Seal D22 kit	KL01ACD	KL01ABZ	KL01ACG	KL01AB5	4P-> 200/15					
	Materials ->	<b>Q1BEGG</b>	<b>Q1Q1EGG</b>	<b>Q1BVG</b>	<b>Q1Q1VGG</b>	2P-> 250/220					
	Seal D28 kit	KL01ACE	KL01AB0	KL01ACH	KL01AB6	4P->250/30					
8*	OR Kit EPDM	KL02AAH	All Versions incl. 3 Dia - OR .								
	OR Kit FPM	KL02AAK	All Versions incl. 3 Dia - OR .								
10	Imp. lock kit M12	KL39AAA	2P->200/110			4P->200/15					
	Imp. lock kit M16	KL39AAB	2P, 250			4P, 250					
11	Valves and Plugs	KL34AAA									
14	Reversing flap	KL52AAC	All Versions DN 65								
13	Coupling D:18	KL10AAH				4P, 160/07					
		KL10AAK	2P, 125/22			4P->200/15					
		KL10AAL	2P->125/40								
		KL10AAM	2P->160/75								
	KL10AAN	2P->200/110									
Coupling D:24	KL10AAQ				4P->250/30						
	KL10AAS	2P->250/185									
	KL10AAT	2P,250/220									

### Single Unit

1	Pump body	151351250	151351250	151351250	151351250	151351250	151351260	151351260	151351260	151351260	151351260
3	Seal-housing disc	160150221	160150221	160150221	150150051	150150051	150150071	150150071	150150091	150150091	150150091
					150150051	150150051		150150071		150150091	150150091
4	Adaptor	161453151	161453151	161453151	161453151	161453151	161452881	161452881	161452881	161452881	161452881
					161453151	161453151		161452881		161452881	161452881
5	Wear ring	168601511	168601511	168601511	168601511	168601511	168601511	168601511	168601511	168601511	168601511
					168601511	168601511		168601511		168601511	168601511
6	Back wear ring				465020201	465020201	465020201	465020201	465020201	465020201	465020201
					465020201	465020201		465020201		465020201	465020201
9**	Motor 3~, 2P	53001RB00	50002RE00	50008VE00	50013VE00	50017VB00	50019VE00	50019VE00	50024VB00	50025VB00	50026VE00
	Motor 3~, 4P				107241510	50005RB00		50006RB00		50010RB00	50011RB00
12	Mot/connector 2P	167350150	167350160	167350160	167350130	167350130	167350140	167350140	167350140	167350140	167350140
	Mot/connector 4P				167350150	167350150		167350150		167350160	167350160

Seal housing disc = disc + back wear ring

FCT Imp. Dia. = FC Imp. Dia.

\* Recommended spare parts - Parti di ricambio consigliate

\* Pièces détachées conseillées - Empfohlene Ersatzteile

\*\* Motor spare parts: see motor lists - Parti di ricambio motore: vedi liste motore

\*\* Pièces détachées Moteur : voir listes moteur - Motor-Ersatzteile: gem. Motorlisten

FCTS\_40-100\_5\_June11\_EdB

## FCTS 80 - FCTS4 80

ELP 3~, 2P, 50	80-125/30/P 101261390	80-125/40/P 101261400	80-125/55/P 101261410	80-160/75/P 101261420		80-200/110/P 101261430	80-200/150/P 101261440	80-200/185/P 101261450	80-200/220/P 101261460
kW ->	3.0	4.0	5.5	7.5		11.0	15.0	18.5	22.0
ELP 3~, 4P, 50			80-125/07/C 104393260	80-125/11/P 101261740	80-200/15/P 101261750			80-200/22/P 101261760	80-200/30/P 101261770
kW ->			0,75	1.1	1.5			2.2	3.0
80-250/40/P 101261780	80-250/55/P 101261790	FCTS/D: motors IE3 fitted FCTS/C, /P: motors IE2 fitted FCTS: motors IE1 fitted							
kW ->	4.0	5.5							

### Kit

2*	Impeller 2P	KL04AC8	KL04AB2	KL04AB3	KL04AB4		KL04AB6	KL04AB8	KL04AB9	KL04ACA
	Impeller 4P			KL04AB3	KL04AB4	KL04ALE			KL04AB9	KL04ACA
		KL04ALA	KL04ALB							

7*	Material -->	Q1BEGG	Q1Q1EGG	Q1BVGG	Q1Q1VGG	2P->160/75				
	Seal D22 kit	KL01ACD	KL01ABZ	KL01ACG	KL01AB5	4P->125/15				
	Material -->	Q1BEGG	Q1Q1EGG	Q1BVGG	Q1Q1VGG	2P->200/220				
	Seal D28 kit	KL01ACE	KL01AB0	KL01ACH	KL01AB6	4P->250/55			STD: Seal Q1BEGG - OR EPDM	
8*	OR EPDM Kit	KL02AAH	All Versions incl. 3 Dia - OR .							
	OR FPM Kit	KL02AAK	All Versions incl. 3 Dia - OR .							
10	Imp.lock kit M12	KL39AAA	2P->160/75; 4P->125/15							
	Imp.lock kit M16	KL39AAB	2P->250/220; 4P->250/55							
11	Valves and Plugs	KL34AAA								
14	Reversing flap	KL52AAD	All Versions, DN 80							
13	Coupling D:18	KL10AAH			4P,125/07					
		KL10AAK			4P,125/11					
		KL10AAL	2P->125/40							
		KL10AAM	2P->125/75							
Coupling D:24	KL10AAP				4P->200,15					
	KL10AAQ				4P->250/40					
	KL10AAR				4P, 250/55					
	KL10AAS	2P->200/185								
	KL10AAT	2P->200/220								

### Single Unit, 2P

1	Pump body	151351270	151351270	151351270	151351270		151351280	151351280	151351280	151351280
3	Seal-housing disc	160150221	160150221	160150221	160150221		150150081	150150081	150150081	150150081
4	Adaptor	161453141	161453151	161453151	161453151		161452881	161452881	161452881	161452881
5	Wear ring	168601521	168601521	168601521	168601521		168601580	168601580	168601580	168601580
6	Back wear ring						168601270	168601270	168601270	168601270
9**	Motor 3~, 2P	50002RE00	50008VE00	50013VE00	50013VE00		50019VE00	50024VB00	50025VB00	50026VE00
12	Mot/Connector	167350120	167350160	167350130	167350130		167350140	167350140	167350140	167350140

### Single Unit, 4P

1	Pump body			151351270	151351270	151351280				151351280	151351280
		151351280	151351280								
3	Seal-housing disc			160150221	160150221	150150081				150150081	150150081
		150150081	150150081								
4	Adaptor			161453151	161453151	161452881				161452881	161452881
		161452881	161452881								
5	Wear ring			168601521	168601521	168601580				168601580	168601580
		168601580	168601580								
6	Back wear ring									168601270	168601270
		168601270	168601270								
9**	Motor 3~, 4P			107241510	50005RB00	50006RB00				50010RB00	50011RB00
		50015VB00	50020VB00								
12	Mot/Connector			167350150	167350150	167350150				167350160	167350160
		167350160	167350130								

Seal housing disc = disc + back wear ring

FCT Imp. Dia. = FC Imp. Dia.

\* Recommended spare parts - Parti di ricambio consigliate

\* Pièces détachées conseillées - Empfohlene Ersatzteile

\*\* Motor spare parts: see motor lists - Parti di ricambio motore: vedi liste motore

\*\* Pièces détachées Moteur : voir listes moteur - Motor-Ersatzteile: gem. Motorlisten

FCTS\_40-100\_5\_June11\_EdB

## FCTS 100 - FCTS4 100

<b>FCTS</b>	100-160/110/P	100-200/185/P	100-200/220/P			
ELP 3 ~, 2P	101261470	101261480	101261490			
kW ->	<b>11,0</b>	<b>18,5</b>	<b>22,0</b>			
<b>FCTS4</b>	100-160/15/P	100-200/22/P	100-200/30/P	100-250/40/P	100-250/55/P	100-250/75/P
ELP 3 ~, 4P	101261800	101261810	101261820	101261830	101261840	101261850
kW ->	<b>1,5</b>	<b>2,2</b>	<b>3,0</b>	<b>4,0</b>	<b>5,5</b>	<b>7,5</b>
	FCTS/D: motors IE3 fitted		FCTS/C, /P: motors IE2 fitted		FCTS: motors IE1 fitted	

### Kit

2*	Impeller 2P	KL04AK6		KL04AK1	KL04AK2			
	Impeller 4P		KL04AK0	KL04AK1	KL04AK2	KL04AK4	KL04AK5	KL04ALD

7*	Material-->	<b>Q1BEGG</b>	<b>Q1Q1EGG</b>	<b>Q1BVGG</b>	<b>Q1Q1VGG</b>	4P -> 250/40	STD: Seal Q1BEGG - OR EPDM
	Seal D28 kit	KL01ACE	KL01ABZ	KL01ACH	KL01AB6	2P -> 200/220	
Material-->	<b>Q1BEGG</b>	<b>Q1Q1VGG</b>	<b>Q1BVGG</b>	<b>Q1Q1VGG</b>			
Seal D33 kit	KL01ACF	KL01AB1	KL01ACK	KL01AB7	4P-> 250/75		
8*	OR Kit EPDM	KL02AAH	Incl. 3 Dia - OR .				
	OR Kit FPM	KL02AAK	Incl. 3 Dia - OR .				
10	Imp. lock kit M16	KL39AAB	2P->200/220			4P->250/40	
	Imp. lock kit M20	KL39AAC				4P->250/75	
11	Valves and Plugs	KL34AAA					
14	Reversing flap	KL52AAE	All Versions, DN 100				
13	Coupling D:24	KL10AAP				4P, 160/15	
		KL10AAQ				4P->250/40	
		KL10AAS	2P->200/185				
		KL10AAT	2P, 200/220				
	Coupling D:29	KL10AAV				4P->250/75	

### Single Unit

1	Pump body	151351290		151351300	151351300		
			151351290	151351300	151351300	151351300	151351300
3	Seal-housing disc	150150061		150150081	150150081		
			150150061	150150081	150150081	150150081	150150101
4	Adaptor	161453151		161452881	161452881		
			161453151	161452881	161452881	161452881	161452881
5	Wear ring	168601270		168601270	168601270		
			168601270	168601270	168601270	168601270	168601270
6	Back wear ring	168601270		168601270	168601270		
			168601270	168601270	168601270	168601270	168601270
9**	Motor 3~, 2P	50019VE00		50025VB00	50026VE00		
	Motor 3~, 4P		50006RB00	50010RB00	50011RB00	50015VB00	50020VB00
12	Mot/connector 2P	167350140		167350140	167350140		
	Mot/connector 4P		167350150	167350160	167350160	167350160	167350130

Seal housing disc = disc + back wear ring

FCT Imp. Dia. = FC Imp. Dia.

\* Recommended spare parts - Parti di ricambio consigliate

\* Pièces détachées conseillées - Empfohlene Ersatzteile

\*\* Motor spare parts: see motor lists - Parti di ricambio motore: vedi liste motore

\*\* Pièces détachées Moteur : voir listes moteur - Motor-Ersatzteile: gem. Motorlisten

FCTS\_40-100\_5\_June11\_EdB



FCTBS/P, Impeller (Item 2) - Motor (Item 9) Part Number

80	<b>80-200/110/P</b>	<b>80-200/150/P</b>	<b>80-200/185/P</b>	<b>80-200/220/P</b>			
	101261500	101261510	101261520	101261530			
	11 kW	15 kW	18,5 kW	22 kW			
	2-> 160720510	160720520	160720530	160720540			
	9-> 50019VE00	50024VB00	50025VB00	50026VE00			
	<b>480-200/15/P</b>			<b>480-200/22/P</b>	<b>480-200/30/P</b>	<b>480-250/40/P</b>	<b>480-250/55/P</b>
	101261860			101261870	101261880	101261890	101261900
	1,5 kW			2,2 kW	3,0 Kw	4,0 kW	5,5 kW
	2-> 160720500			160720530	160720540	160720590	160720600
	9-> 50006RB00			50010RB00	50011RB00	50015VB00	50020VB00
100	<b>100-160/110/P</b>	<b>100-200/185/P</b>	<b>100-200/220/P</b>				
	101261540	101261550	101261560				
	11 kW	18.5 kW	22 kW				
	2-> 160720680	160720720	160720780				
	9-> 50019VE00	50025VB00	50026VE00				
	<b>4100-160/15/P</b>	<b>4100-200/22/P</b>	<b>4100-200/30/P</b>	<b>4100-250/40/P</b>	<b>4100-250/55/P</b>	<b>4100-250/75/P</b>	
	101261910	101261920	101261930	101261940	101261950	101261960	
	1,5 kW	2,2 kW	3 kW	4 kW	5,5 kW	7,5 kW	
	2-> 160720700	160720720	160720780	160720850	160720900	160720910	
	9-> 50006RB00	50010RB00	50011RB00	50015VB00	50020VB00	50021VB00	

FCTS\_40-100\_5\_June11\_EdB

xylem