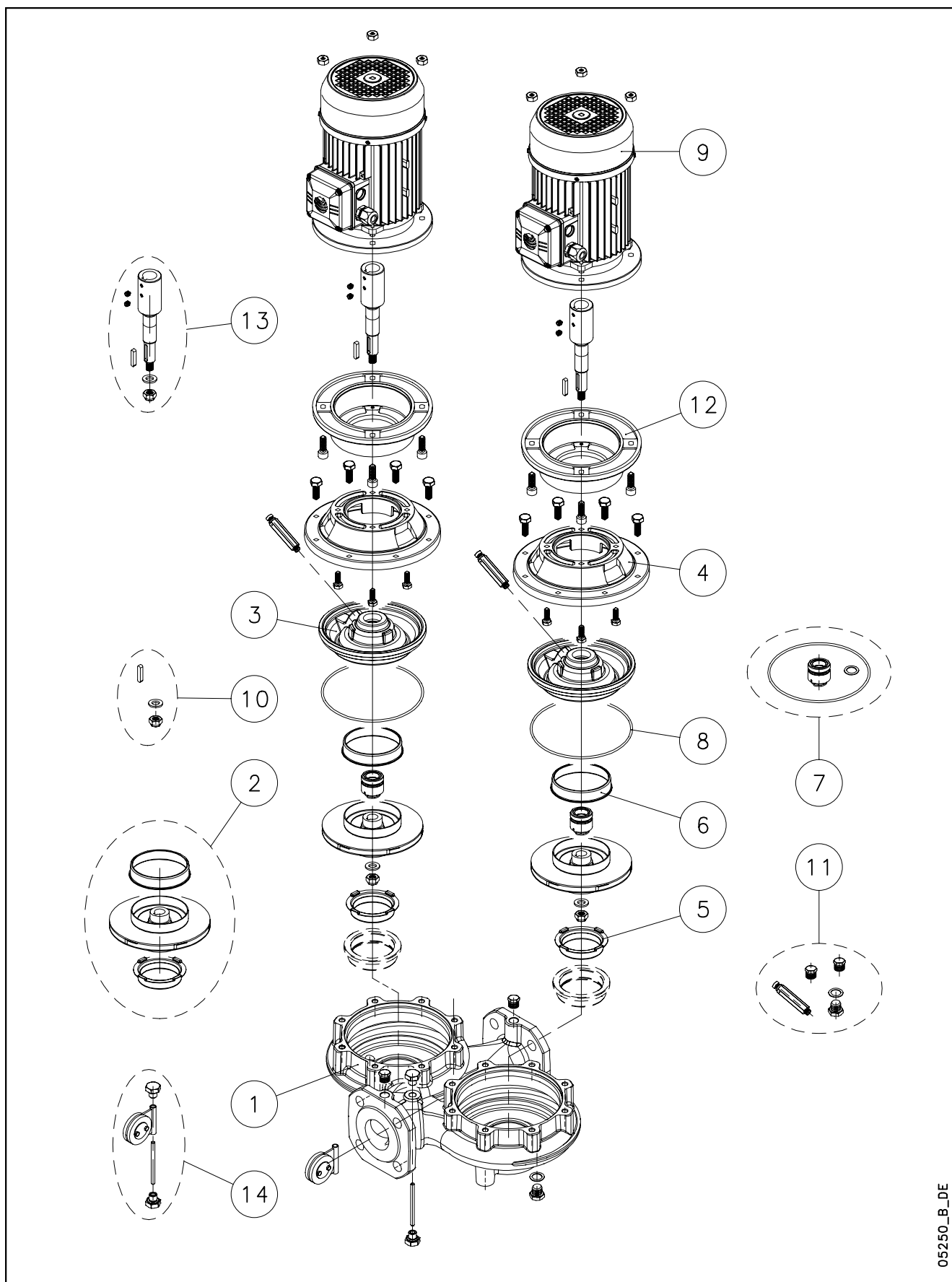


FCTS-FCTS4 / LHTS-LHTS4 / LRZ-LRZ_4



05250_B_DE

Lowara, Flygt and Vogel Pumpen are a trademark of Xylem Inc. or one of its subsidiaries. Goulds is a registered trademark of Goulds Pumps, Inc. and is used under license.

N.	Descrizione it	Description en	Description fr	Beschreibung de	Descripción es	Descrição pt
1	Corpo pompa completo	Complete pump body	Corps de pompe complete	Kompletter pumpengehäuse	Caja bomba completa	Corpo da bomba complete
2	Girante e anelli di usura	Impeller and wear rings	Roue et anneaux d'usure	Laufrad und Verschleißbringe	Rodete y anillos de desgaste	Impulsor e anéis compensadores de desgaste
3	Disco portatenuta (con anello di usura)	Seal housing disc (with wear ring)	Disque d'étanchéité (avec anneau d'usure)	Dichtungsscheibe (mit Ausgleichsring)	Disco de alojamiento retén (con anillo de desgaste)	Disco porta-vedante(com anel compensadorde desgaste)
4	Lanterna	Adaptor	Lanterne	Antriebslaterne	Adaptador	Adaptador
5	Rasamento anteriore	Front wear plate	Bague pour régulation du jeu axial avant	Vordere Ausgleichsscheibe	Espesor delantero	Casquilho anterior
6	Rasamento posteriore	Back wear plate	Bague pour régulation du jeu axial arrière	Hintere Ausgleichsscheibe	Espesor trasero	Casquilho posterior
7	Tenuta meccanica e guarnizione OR	Mechanical seal and O-Ring	Garniture mécanique et joint torique	Gleitringdichtung und O-Ring	Retén mecánico y aro tórico	Vedante mecânico e vedação OR
8	Guarnizione OR	O-Ring	Joint torique	O-Ring	Aro tórico	Vedação OR
9	Motore completo	Complete motor	Moteur complet	Kompletter Motor	Motor completo	Motor complete
10	Gruppo fissaggio girante (dado, rosetta e linguetta)	Impeller locking group (nut, washer and key)	Groupe de fixation roue (ecrou, rondelle et clavette)	Befestigungsgruppe Laufrads auf (Feststellmutter, Unterlegscheibe und Passfeder)	Grupo de fijación rodete (tuerca, arandela y lengüeta)	Grupo de fixação do impulsor (porca, anilha e lingueta)
11	Valvola e tappi	Valve and plugs	Vanne et bouchons	Ventil und Stutzen	Válvula y taponés	Válvula e tampões
12	Raccordo motore	Motor connector	Raccord moteur	Motoranschluss	Acoplamiento motor	Conexão motor
13	Giunto con gruppo fissaggio girante	Coupling with impeller locking group	Manchon avec groupe de fixation roue	Kupplung mit Befestigungsgruppe Laufrad	Junta con grupo de fijación rodete	Junta com grupo de fixação do impulsor
14	Valvola a clapet	Clapet valve	Vanne à clapet	Scharnierventil	Válvula de clapeta	Válvula de clapet
N.	Beschrijving nl	Περιγραφή el	Açıklama tr	Kuvaus fi	Описание ru	Opis pl
1	Compleet pomphuis	Πλήρες σώμα αντλίας	Komple pompa gövdesi	Täydellinen pumpun runko	Полный корпус насоса	Kompletny korpus pompy
2	Waaier en slijtringen	Πτερόγιο και δακτύλιοι τριβής	Pompa rotoru ve aşınma halkaları	Juoksupyörä ja kulumisrenkaat	Рабочее колесо и изнашиваемые кольца	Wirnik i pierścienie wymienne
3	Dichtingssteunplaat (met slijtring)	Δίσκος μηχανικού στυπιοθλιπτη και δακτύλιος τριβής	Sızdırmazlık diskisi (aşınma halkası ile)	Tiivisteenn kannatuslevy (kulumisrenkaalla)	Диск держателя прокладки (с изнашиваемым кольцом)	Tarcza uszczelki (z wymiennym pierścieniem)
4	Lantaarnstuk	Μπρακέτο	Adaptör	Sovitin	Адаптер	Lampa
5	Voorste schraapring	Πρόσθιος δακτύλιος τριβής	Ön ara halkası	Etuväilievä	Передняя утолщающая прокладка	Wygładzanie przednie
6	Achterste schraapring	Οπίσθιος δακτύλιος τριβής	Arka ara halkası	Takaväilievä	Задняя утолщающая прокладка	Wygładzanie tylne
7	Mechanische asafdichting en O-ringafdichting	Μηχανικός στυπιοθλιπτης και ροδέλες στεγανοποίησης	Mekanik conta ve O-Ring	Mekaaninen tiiviste ja O-rengas	Механическая прокладка и уплотнение OR	Uszczelnienie mechaniczne i uszczelka O-Ring
8	O-ringafdichting	Ροδέλα στεγανοποίησης	O-Ring	O-rengas	Прокладка OR	Uszczelka O-Ring
9	Complete motor	Πλήρης κινητήρας	Komple motor	Täydellinen moottori	Укомплектованный двигатель	Kompletny silnik
10	Waaierbevestigingsblok (moer, ring en spie)	Σετ ασφάλισης περυγιού (παξιμάδι,ροδέλα,σφήνα)	Pompa rotorunu sabitleme takımı (somon, rondela ve kama)	Juoksupyörän kiinnityskokonaisuus (mutteri, välirengas ja kiila)	Узел фиксации рабочего колеса (гайка, шайба и шпонка)	Zespół mocujący wirnika (nakrętka, podkładka i wpust)
11	Klep en doppen	Βαλβίδα εξαέρωσης και τάπες	Valf ve tapalar	Venttiili ja tulpat	Клапан и заглушки	Zawór i nakrętki
12	Motorverbinding	Έδρανο	Motor bağlanti elemanı	Moottoriiliitos	Патрубок двигателя	Złącza silnika
13	Koppeling met waaierbevestigingsblok	Προέκταση άξονα και σετ ασφάλισης περυγιού	Pompa rotorunu sabitleme takımı ile mafsal	Liitos juoksupyörän kiinnityskokonaisuudella	Соединение с узлом фиксации рабочего колеса	Złącze z zespołem mocującym wirnika
14	Terugslagklep	Κλαπέ	Klapeli valf	Läppäventtiili	Клапан и вантуз	Zawór klapowy

FCTS 40 - FCTS4 40

ELP 3 ~, 2P, 50	40-125/07	40-125/11	40-160/15	40-160/22	40-200/30	40-200/40	40-200/55	40-250/75	40-250/110
	102181100	102181110	102181120	102181130	102181140	102181150	102181160	102181170	102181180
kW ->	0,75	1,1	1,5	2,2	3,0	4,0	5,5	7,5	11,0
ELP 3 ~, 4P, 50						40-200/05	40-200/07	40-250/11	40-250/15
						102181600	102181610	102181620	102181630
kW ->						0,55	0,75	1,1	1,5

Kit

2*	Impeller 2P	KL04AA9	KL04ABA	KL04ABB	KL04ABC	KL04ABD	KL04ABE	KL04ACK	KL04ACL	KL04ACM
	Impeller 4P						KL04ABE	KL04ACK	KL04ACL	KL04ACM

7*	Materials ->	Q1BEGG	Q1Q1EGG	Q1BVGG	Q1Q1VGG	
	Seal D22 kit	KL01ACD	KL01ABZ	KL01ACG	KL01AB5	STD: Seal Q1BEGG - OR EPDM
8*	OR Kit EPDM	KL02AAH	All Versions incl. 3 Dia - OR .			
	OR Kit FPM	KL02AAK	All Versions incl. 3 Dia - OR .			
10	Imp. lock kit M12	KL39AAA				
11	Valves and Plugs	KL34AAA				
14	Reversing flap	KL52AAA	All Versions, DN 40			
13	Coupling D:18	KL10AAH	2P->125/11	4P->200/07		
		KL10AAK	2P->160/22	4P->250/15		
		KL10AAL	2P->200/40			
		KL10AAM	2P->250/75			
		KL10AAN	2P, 250/110			

Single Unit

1	Pump body	151351200	151351200	151351200	151351200	151351210	151351210	151351210	151351210	151351210
3	Seal-housing disc	160150201	160150201	150150041	150150041	150150071	150150071	150150071	150150071	150150071
4	Adaptor	161430511	161430511	161430511	161430511	161452881	161452881	161452881	161452881	161452881
5	Wear ring	168601491	168601491	168601491	168601491	168601491	168601491	168601491	168601491	168601491
6	Back wear ring			465020201	465020201	465020201	465020201	465020201	465020201	465020201
9**	Motor 3~, 2P	107230320	107230340	107230360	107230380	107106257	107106307	107106337	107106347	107106397
	Motor 3~, 4P						107230740	107230800	107106611	107106621
12	Mo/connector	167350110	167350110	167350110	167350110	167350160	167350160	167350130	167350130	167350140

Seal housing disc - disc + back wear ring

FCT Imp. Dia. = FC Imp. Dia.

* Recommended spare parts - Parti di ricambio consigliate

* Pièces détachées conseillées - Empfohlene Ersatzteile

** Motor spare parts: see motor lists - Parti di ricambio motore: vedi liste motore

** Pièces détachées Moteur : voir listes moteur - Motor-Ersatzteile: gem. Motorlisten

FCTS 50 - FCTS4 50

ELP 3 ~, 2P, 50	50-125/11	50-125/15	50-160/22	50-160/30	50-160/40	50-200/55	50-200/75	50-250/110A	50-250/110	50-250/150
	102181190	102181200	102181210	102181220	102181230	102181240	102181250	102181260	102181270	102181280
kw ->	1,1	1,5	2,2	3,0	4,0	5,5	7,5	11,0	11,0	15,0
ELP 3 ~, 4P, 50						50-200/07	50-200/11		50-250/15	50-250/22
						102181640	102181650		102181660	102181670
kw ->						0,75	1,1		1,5	2,2

Kit

2*	Impeller 2P	KL04ABF	KL04ABG	KL04ABH	KL04ABK	KL04ABL	KL04ABM	KL04ABN	KL04ABP	KL04ABQ	KL04ABR
	Impeller 4P						KL04ABM	KL04ABN		KL04ABQ	KL04ABR

7*	Material ->	Q1BEGG	Q1Q1EGG	Q1BVGG	Q1Q1VGG	2P-> 250/110		
	Seal D22 kit	KL01ACD	KL01ABZ	KL01ACG	KL01AB5	4P-> 250/15		
	Material ->	Q1BEGG	Q1Q1EGG	Q1BVGG	Q1Q1VGG	2P, 250/150		
	Seal D28 kit	KL01ACE	KL01AB0	KL01ACH	KL01AB6	4P, 250/22	STD: Seal Q1BEGG - OR EPDM	
8*	OR Kit EPDM	KL02AAH	All Versions incl. 3 Dia - OR .					
	OR Kit FPM	KL02AAK	All Versions incl. 3 Dia - OR .					
10	Imp. lock kit M12	KL39AAA	2P->250/110		4P->250/15			
	Imp. lock kit M16	KL39AAB	2P, 250/150		4P, 250/22			
11	Valves and Plugs	KL34AAA						
14	Reversing flap	KL52AAB	All Versions DN 50					
13	Coupling D:18	KL10AAH	2P, 125/11		4P, 200/07			
		KL10AAK	2P->160/22		4P->250/15			
		KL10AAL	2P->160/40					
		KL10AAM	2P->200/75					
	KL10AAN	2P->250/110						
Coupling D:24	KL10AAQ			4P, 250/22				
	KL10AAS	2P, 250/150						

Single Unit

1	Pump body	151351220	151351220	151351220	151351220	151351220	151351230	151351230	151351240	151351240	151351240
3	Seal-housing disc	160150201	160150201	160150201	150150041	150150041	150150071	150150071	150150071	150150071	150150091
4	Adaptor 2P	161430511	161430511	161430511	161430521	161430521	161452881	161452881	161452881	161452881	161452881
	Adaptor 4P						161452881	161452881		161452881	161452881
5	Wear ring	168601500	168601500	168601500	168601500	168601500	168601500	168601500	168601511	168601511	168601511
6	Back wear ring				465020201	465020201	465020201	465020201	465020201	465020201	465020201
9**	Motor 3~, 2P	107230340	107230360	107230380	107106257	107106307	107106337	107106347	107106397	107106397	107106421
	Motor 3~, 4P						107230800	107106611		107106621	107106651
12	Mot/connector 2P	167350110	167350110	167350110	167350120	167350120	167350130	167350130	167350140	167350140	167350140
	Mot/connector 4P						167350150	167350150		167350150	167350160

Seal housing disc - disc + back wear ring

FCT Imp. Dia. = FC Imp. Dia.

* Recommended spare parts - Parti di ricambio consigliate

* Pièces détachées conseillées - Empfohlene Ersatzteile

** Motor spare parts: see motor lists - Parti di ricambio motore: vedi liste motore

** Pièces détachées Moteur : voir listes moteur - Motor-Ersatzteile: gem. Motorlisten

FCTS40-100_5_July05_EdE

FCTS 65 - FCTS4 65

ELP 3 ~, 2P, 50	65-125/22	65-125/30	65-125/40	65-160/55	65-160/75	65-200/110A	65-200/110	65-250/150	65-250/185	65-250/220
	102181290	102181300	102181310	102181320	102181330	102181340	102181350	102181360	102181370	102181380
kw ->	2,2	3,0	4,0	5,5	7,5	11,0	11,0	15,0	18,5	22,0
ELP 3 ~, 4P, 50				65-160/07	65-160/11		65-200/15		65-250/22	65-250/30
				102181680	102181690		102181700		102181710	102181720
kw ->				0,75	1,1		1,5		2,2	3,0

Kit

2*	Impeller 2P	KL04ABS	KL04ABT	KL04ABU	KL04ABV	KL04ABW	KL04ABX	KL04ABY	KL04ABZ	KL04AB0	KL04AB1
	Impeller 4P				KL04ABV	KL04ABW		KL04ABY		KL04AB0	KL04AB1

7*	Materials ->	Q1BEGG	Q1Q1EGG	Q1BVGG	Q1Q1VGG	2P-> 200/110					
	Seal D22 kit	KL01ACD	KL01ABZ	KL01ACG	KL01AB5	4P-> 200/15					
	Materials ->	Q1BEGG	Q1Q1EGG	Q1BVGG	Q1Q1VGG	2P-> 250/220					
	Seal D28 kit	KL01ACE	KL01AB0	KL01ACH	KL01AB6	4P->250/30	STD: Seal Q1BEGG - OR EPDM				
8*	OR Kit EPDM	KL02AAH	All Versions incl. 3 Dia - OR .								
	OR Kit FPM	KL02AAK	All Versions incl. 3 Dia - OR .								
10	Imp. lock kit M12	KL39AAA	2P->200/110			4P->200/15					
	Imp. lock kit M16	KL39AAB	2P, 250			4P, 250					
11	Valves and Plugs	KL34AAA									
14	Reversing flap	KL52AAC	All Versions DN 65								
13	Coupling D:18	KL10AAH				4P, 160/07					
		KL10AAK	2P, 125/22			4P->200/15					
		KL10AAL	2P->125/40								
		KL10AAM	2P->160/75								
	Coupling D:24	KL10AAN	2P->200/110								
KL10AAQ					4P->250/30						
KL10AAS		2P->250/185									
	KL10AAT	2P,250/220									

Single Unit

1	Pump body	151351250	151351250	151351250	151351250	151351250	151351260	151351260	151351260	151351260
					151351250	151351250		151351260		151351260
3	Seal-housing disc	160150221	160150221	160150221	150150051	150150051	150150071	150150071	150150091	150150091
					150150051	150150051		150150071		150150091
4	Adaptor	161453151	161453151	161453151	161453151	161453151	161452881	161452881	161452881	161452881
					161453151	161453151		161452881		161452881
5	Wear ring	168601511	168601511	168601511	168601511	168601511	168601511	168601511	168601511	168601511
					168601511	168601511		168601511		168601511
6	Back wear ring				465020201	465020201	465020201	465020201	465020201	465020201
					465020201	465020201		465020201		465020201
9**	Motor 3~, 2P	107230380	107106257	107106307	107106337	107106347	107106397	107106397	107106421	107106431
	Motor 3~, 4P				107230800	107106611		107106621		107106651
12	Mot/connector 2P	167350150	167350160	167350160	167350130	167350130	167350140	167350140	167350140	167350140
	Mot/connector 4P				167350150	167350150		167350150		167350160

Seal housing disc - disc + back wear ring

FCT Imp. Dia. = FC Imp. Dia.

* Recommended spare parts - Parti di ricambio consigliate

* Pièces détachées conseillées - Empfohlene Ersatzteile

** Motor spare parts: see motor lists - Parti di ricambio motore: vedi liste motore

** Pièces détachées Moteur : voir listes moteur - Motor-Ersatzteile: gem. Motorlisten

FCTS40-100_5_July05_EdE

FCTS 80 - FCTS4 80

ELP 3 -, 2P, 50	80-125/30	80-125/40	80-125/55	80-160/75		80-200/110	80-200/150	80-200/185	80-200/220
	102181390	102181400	102181410	102181420		102181430	102181440	102181450	102181460
kW ->	3.0	4.0	5.5	7.5		11.0	15.0	18.5	22.0
ELP 3 -, 4P, 50			80-125/07	80-125/11	80-200/15			80-200/22	80-200/30
			102181730	102181740	102181750			102181760	102181770
kW ->			0,75	1.1	1.5			2.2	3.0
	80-250/40	80-250/55							
	102181780	102181790							
kW ->	4.0	5.5							

Kit

2*	Impeller 2P	KL04AC8	KL04AB2	KL04AB3	KL04AB4		KL04AB6	KL04AB8	KL04AB9	KL04ACA
	Impeller 4P			KL04AB3	KL04AB4	KL04ALE			KL04AB9	KL04ACA
		KL04ALA	KL04ALB							
7*	Material -->	Q1BEGG	Q1Q1EGG	Q1BVGG	Q1Q1VGG	2P->160/75				
	Seal D22 kit	KL01ACD	KL01ABZ	KL01ACG	KL01AB5	4P->125/15				
	Material -->	Q1BEGG	Q1Q1EGG	Q1BVGG	Q1Q1VGG	2P->200/220				
	Seal D28 kit	KL01ACE	KL01AB0	KL01ACH	KL01AB6	4P->250/55				STD: Seal Q1BEGG - OR EPDM
8*	OR EPDM Kit	KL02AAH	All Versions incl. 3 Dia - OR .							
	OR FPM Kit	KL02AAK	All Versions incl. 3 Dia - OR .							
10	Imp.lock kit M12	KL39AAA	2P->160/75; 4P->125/15							
	Imp.lock kit M16	KL39AAB	2P->250/220; 4P->250/55							
11	Valves and Plugs	KL34AAA								
14	Reversing flap	KL52AAD	All Versions, DN 80							
13	Coupling D:18	KL10AAH				4P,125/07				
		KL10AAK				4P,125/11				
		KL10AAL	2P->125/40							
		KL10AAM	2P->125/75							
	Coupling D:24	KL10AAP				4P->200,15				
KL10AAQ					4P->250/40					
KL10AAR					4P, 250/55					
KL10AAS		2P->200/185								
	KL10AAT	2P->200/220								

Single Unit, 2P

1	Pump body	151351270	151351270	151351270	151351270		151351280	151351280	151351280	151351280
3	Seal-housing disc	160150221	160150221	160150221	160150221		150150081	150150081	150150081	150150081
4	Adaptor	161453141	161453151	161453151	161453151		161452881	161452881	161452881	161452881
5	Wear ring	168601521	168601521	168601521	168601521		168601580	168601580	168601580	168601580
6	Back wear ring						168601270	168601270	168601270	168601270
9**	Motor 3--, 2P	107106257	107106307	107106337	107106347		107106397	107106421	107106431	107106447
12	Mot/Connector	167350120	167350160	167350130	167350130		167350140	167350140	167350140	167350140

Single Unit, 4P

1	Pump body			151351270	151351270	151351280				151351280	151351280
		151351280	151351280								
3	Seal-housing disc			160150221	160150221	150150081				150150081	150150081
		150150081	150150081								
4	Adaptor			161453151	161453151	161452881				161452881	161452881
		161452881	161452881								
5	Wear ring			168601521	168601521	168601580				168601580	168601580
		168601580	168601580								
6	Back wear ring									168601270	168601270
		168601270	168601270								
9**	Motor 3--, 4P			107230800	107106611	107106621				107106651	107106661
		107106681	107106711								
12	Mot/Connector			167350150	167350150	167350150				167350160	167350160
		167350160	167350130								

Seal housing disc - disc + back wear ring

FCT Imp. Dia. = FC Imp. Dia.

* Recommended spare parts - Parti di ricambio consigliate

* Pièces détachées conseillées - Empfohlene Ersatzteile

** Motor spare parts: see motor lists - Parti di ricambio motore: vedi liste motore

** Pièces détachées Moteur : voir listes moteur - Motor-Ersatzteile: gem. Motorlisten

FCTS40-100_5 July05 EdE

FCTS 100 - FCTS4 100

ELP 3 ~, 2P	100-160/110		100-200/185	100-200/220			
	102181470		102181480	102181490			
KW ->	11,0		18,5	22,0			
ELP 3 ~, 4P		100-160/15	100-200/22	100-200/30	100-250/40	100-250/55	100-250/75
		102181800	102181810	102181820	102181830	102181840	102181850
KW ->		1,5	2,2	3,0	4,0	5,5	7,5

Kit

2*	Impeller 2P	KL04AK6		KL04AK1	KL04AK2		
	Impeller 4P		KL04AK0	KL04AK1	KL04AK2	KL04AK4	KL04AK5 KL04ALD

7*	Material-->	Q1BEGG	Q1Q1EGG	Q1BVGG	Q1Q1VGG	4P -> 250/40	STD: Seal Q1BEGG - OR EPDM
	Seal D28 kit	KL01ACE	KL01ABZ	KL01ACH	KL01AB6	2P -> 200/220	
	Material-->	Q1BEGG	Q1Q1VGG	Q1BVGG	Q1Q1VGG	4P-> 250/75	
	Seal D33 kit	KL01ACF	KL01AB1	KL01ACK	KL01AB7		
8*	OR Kit EPDM	KL02AAH	Incl. 3 Dia - OR .				
	OR Kit FPM	KL02AAK	Incl. 3 Dia - OR .				
10	Imp. lock kit M16	KL39AAB	2P->200/220			4P->250/40	
	Imp. lock kit M20	KL39AAC				4P->250/75	
11	Valves and Plugs	KL34AAA					
14	Reversing flap	KL52AAE	All Versions, DN 100				
13	Coupling D:24	KL10AAP				4P, 160/15	
		KL10AAQ				4P->250/40	
		KL10AAS	2P->200/185				
		KL10AAT	2P, 200/220				
	Coupling D:29	KL10AAV				4P->250/75	

Single Unit

1	Pump body	151351290		151351300	151351300		
			151351290	151351300	151351300	151351300	151351300
3	Seal-housing disc	150150061		150150081	150150081		
			150150061	150150081	150150081	150150081	150150101
4	Adaptor	161453151		161452881	161452881		
			161453151	161452881	161452881	161452881	161452881
5	Wear ring	168601270		168601270	168601270		
			168601270	168601270	168601270	168601270	168601270
6	Back wear ring	168601270		168601270	168601270		
			168601270	168601270	168601270	168601270	168601270
9**	Motor 3~, 2P	107106397		107106431	107106447		
	Motor 3~, 4P		107106621	107106651	107106661	107106681	107106711 107106721
12	Mot/connector 2P	167350140		167350140	167350140		
	Mot/connector 4P		167350150	167350160	167350160	167350160	167350130

Seal housing disc - disc + back wear ring

FCT Imp. Dia. = FC Imp. Dia.

* Recommended spare parts - Parti di ricambio consigliate

* Pièces détachées conseillées - Empfohlene Ersatzteile

** Motor spare parts: see motor lists - Parti di ricambio motore: vedi liste motore

** Pièces détachées Moteur : voir listes moteur - Motor-Ersatzteile: gem. Motorlisten

FCTS40-100_5_July05_EdE

xylem

