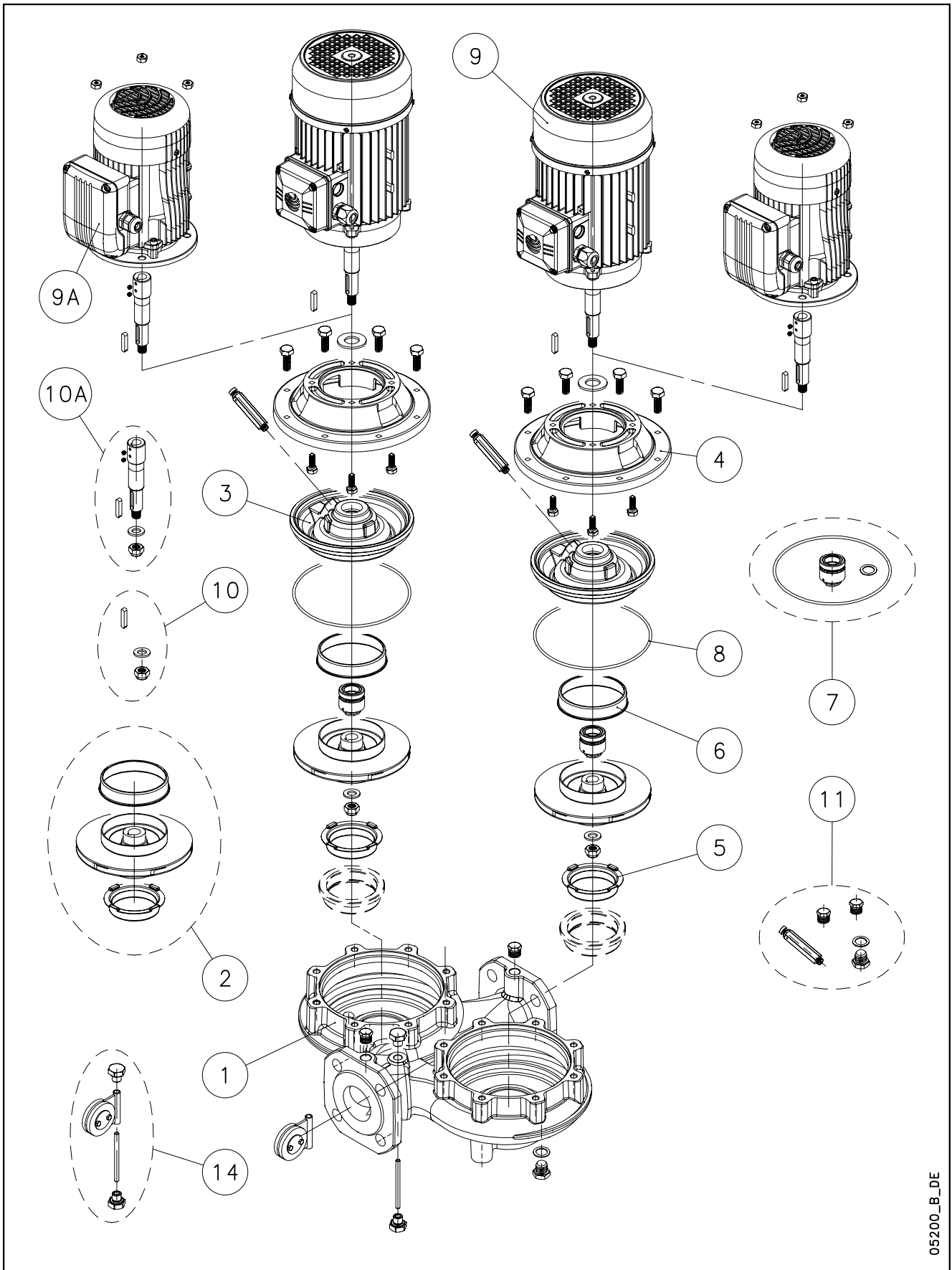


## FCTE-FCTE4 / LHTX-LHTX4



05200\_B\_DE

Lowara, Flygt and Vogel Pumpen are a trademark of Xylem Inc. or one of its subsidiaries. Goulds is a registered trademark of Goulds Pumps, Inc. and is used under license.

N.	Descrizione it	Description en	Description fr	Beschreibung de	Descripción es	Descrição pt
1	Corpo pompa completo	Complete pump body	Corps de pompe complete	Kompletter pumpengehäuse	Caja bomba completa	Corpo da bomba complete
2	Girante e anelli di usura	Impeller and wear rings	Roue et anneaux d'usure	Laufrad und Verschleißringe	Rodete y anillos de desgaste	Impulsor e anéis compensadores de desgaste
3	Disco portatenuta (con anello di usura)	Seal housing disc (with wear ring)	Disque d'étanchéité (avec anneau d'usure)	Dichtungsscheibe (mit Ausgleichsring)	Disco de alojamiento retén (con anillo de desgaste)	Disco porta-vedante (com anel compensador de desgaste)
4	Lanterna	Adaptor	Lanterne	Antriebslaterne	Adaptador	Adaptador
5	Rasamento anteriore	Front wear plate	Bague pour régulation du jeu axial avant	Vordere Ausgleichsscheibe	Espesor delantero	Casquilho anterior
6	Rasamento posteriore	Back wear plate	Bague pour régulation du jeu axial arrière	Hintere Ausgleichsscheibe	Espesor trasero	Casquilho posterior
7	Tenuta meccanica e guarnizione OR	Mechanical seal and O-Ring	Garniture mécanique et joint torique	Gleitringdichtung und O-Ring	Retén mecánico y aro tórico	Vedante mecânico e vedação OR
8	Guarnizione OR	O-Ring	Joint torique	O-Ring	Aro tórico	Vedação OR
9	Motore completo	Complete motor	Moteur complet	Kompletter Motor	Motor completo	Motor complete
9A	Motore completo (solo 4 poli grandezza 71)	Complete motor (4-poles size 71 only)	Moteur complet (uniquement 4 pôles taille 71)	Kompletter Motor (nur 4polig Größe 71)	Motor completo (só 4 polos tamaño 71)	Motor complete (só 4 pólos grandezza 71)
10	Gruppo fissaggio girante (dado, rosetta e linguetta)	Impeller locking group (nut, washer and key)	Groupe de fixation roue (ecrou, rondelle et clavette)	Befestigungsgruppe Laufrads auf (Feststellmutter, Unterlegscheibe und Passfeder)	Grupo de fijación rodete (tuerca, arandela y lengüeta)	Grupo de fixação do impulsor (porca, anilha e lingueta)
10A	Giunto con gruppo fissaggio girante (solo 4 poli grandezza 71)	Coupling with impeller locking group (4-poles size 71 only)	Manchon avec groupe de fixation roue (uniquement 4 pôles taille 71)	Kupplung mit Befestigungsgruppe Laufrad (nur 4polig Größe 71)	Junta con grupo de fijación rodete (só 4 polos tamaño 71)	Junta com grupo de fixação do impulsor (só 4 pólos grandezza 71)
11	Valvola e tappi	Valve and plugs	Vanne et bouchons	Ventil und Stutzin	Válvula y tapones	Válvula e tampões
14	Valvola a clapet	Clapet valve	Vanne à clapet	Scharnierventil	Válvula de clapeta	Válvula de clapet
N.	Beschrijving nl	Περιγραφή el	Açıklama tr	Kuvaus fi	Описание ru	Opis pl
1	Compleet pomphuis	Πλήρες σώμα αντλίας	Komple pompa göndesi	Täydellinen pumpun runko	Полный корпус насоса	Kompletny korpus pompy
2	Waaier en slijtringen	Πτερύγιο και δακτύλιοι τριβής	Pompa rotoru ve aşınma halkaları	Juoksupyörä ja kulumisrenkaat	Рабочее колесо и изнашиваемые кольца	Wirnik i pierścienie wymienne
3	Dichtingssteunplaat (met slijtring)	Δίσκος μηχανικού στυπιοθλίπτη και δακτύλιοι τριβής	Sızdırmazlık diski (aşınma halkası ile)	Tiivisteenn kannatuslevy (kulumisrenkaalla)	Диск держателя прокладки (с изнашиваемым кольцом)	Tarcza uszczelki (z wymiennym pierścieniem)
4	Lantaarnstuk	Μπρακέτο	Adaptör	Sovitin	Адаптер	Lampa
5	Voorste schraapring	Πρόσθιος δακτύλιος τριβής	Ön ara halkası	Etuvalilevy	Передняя утолщающая прокладка	Wyglądanie przednie
6	Achterste schraapring	Οπίσθιος δακτύλιος τριβής	Arka ara halkası	Takavalilevy	Задняя утолщающая прокладка	Wyglądanie tylne
7	Mechanische asafdichting en O-ringafdichting	Μηχανικός στυπιοθλίπτης και ροδέλες στεγανοποίησης	Mekanik conta ve O-Ring	Mekaaninen tiiviste ja O-rengas	Механическая прокладка и уплотнение OR	Uszczelnienie mechaniczne i uszczelka O-Ring
8	O-ringafdichting	Ροδέλα στεγανοποίησης	O-Ring	O-rengas	Прокладка OR	Uszczelka O-Ring
9	Complete motor	Πλήρης κινητήρας	Komple motor	Täydellinen moottori	Укомплектованный двигатель	Kompletny silnik
9A	Complete motor (alleen 4-polig grootte 71)	Πλήρης κινητήρας (τετραπολικός μόνο μεγέθους 71)	Komple motor (sadece 4 kutuplu; boyu: 71)	Täydellinen moottori (ainoastaan 4 napaa, koko 71)	Укомплектованный двигатель (только 4 полюса величина 71)	Kompletny silnik (tylko 4 bieguny wielkość 71)
10	Waaierbevestigingsblok (moer, ring en spie)	Σετ ασφάλισης περυγίου (παξιμάδι, ροδέλα, σφήνα)	Pompa rotorunu sabitleme takımı (somun, rondela ve kama)	Juoksupyörän kiinnityskokonaisuus (mutteri, välirengas ja kiila)	Узел фиксации рабочего колеса (гайка, шайба и шпонка)	Zespół mocujący wirnika (nakrętka, podkładka i wpust)
10A	Koppeling met waaierbevestigingsblok (alleen 4-polig grootte 71)	Προέκταση άξονα και σετ ασφάλισης περυγίου	Pompa rotorunu sabitleme takımı ile mafsal (sadece 4 kutuplu; boyu: 71)	Liitos juoksupyörän kiinnityskokonaisuudella (ainoastaan 4 napaa, koko 71)	Соединение с узлом фиксации рабочего колеса (только 4 полюса величина 71)	Złącze z zespołem mocującym wirnika (tylko 4 bieguny wielkość 71)
11	Klep en doppen	Βαλβίδα εξαέρωσης και τάπες	Valf ve tapalar	Venttiili ja tulpat	Клапан и заглушки	Zawór i nakrętki
14	Terugslagklep	Κλαπέ	Klapeli valf	Läppäventtiili	Клапан и вантуз	Zawór klapowy

## FCTEM 40 - FCTE 40 - FCTE4 40

<b>FCTEM</b>	40-125/07	40-125/11	40-160/15	40-160/22/P					
ELP 1 ~, 2P, 50	102180010	102180020	102180030	101260040					
<b>FCTE</b>	40-125/07/C	40-125/11/C	40-160/15/C	40-160/22/C	40-200/40A/P	40-200/40/P	40-200/55/P	40-250/75/P	40-250/110/P
ELP 3 ~, 2P, 50, IE2 >	104390600	104390610	104390620	104390630	101260140	101260150	101260160	101260170	101260180
ELP 3 ~, 2P, 50, IE3 >	40-125/07/D	40-125/11/D	40-160/15/D	40-160/22/C	40-200/40A/P	40-200/40/P	40-200/55/P	40-250/75/P	40-250/110/P
	104564400	104564410	104564420	104390630	101260140	101260150	101260160	101260170	101260180
kW ->	<b>0,75</b>	<b>1,1</b>	<b>1,5</b>	<b>2,2</b>	<b>4,0</b>	<b>4,0</b>	<b>5,5</b>	<b>7,5</b>	<b>11,0</b>
<b>FCTE4</b>	40-125/02A	40-125/02	40-160/02	40-160/03		40-200/05	40-200/07/C	40-250/11/P	40-250/15/P
ELP 3 ~, 4P, 50	102180600	102180610	102180620	102180630		102180640	104393100	101260660	101260670
kW ->	<b>0,25</b>	<b>0,25</b>	<b>0,25</b>	<b>0,37</b>		<b>0,55</b>	<b>0,75</b>	<b>1,1</b>	<b>1,5</b>
	FCTE/D: motors IE3 fitted			FCTE/C, /P: motors IE2 fitted		FCTE: motors IE1 fitted			

### Kit

2*	Impeller 2P	KL04AA9	KL04ABA	KL04ABB	KL04ABC	KL04ABD	KL04ABE	KL04ACK	KL04ACL	KL04ACM
	Impeller 4P	KL04AA9	KL04ABA	KL04ABB	KL04ABC		KL04ABE	KL04ACK	KL04ACL	KL04ACM

7*	Material->	<b>VBEGG</b>	<b>Q1Q1EGG</b>	<b>VBVGG</b>	<b>Q1Q1VGG</b>	
	Seal D22 kit	KL01AAS	KL01ABZ	KL01AB2	KL01AB5	STD ->Seal VBEGG - OR EPDM
8*	OR EPDM Kit	KL02AAH	<b>All Versions incl. 3 Dia - OR</b>			
	OR FPM Kit	KL02AAK	<b>All Versions incl. 3 Dia - OR.</b>			
10	Imp. lock kit M12	KL39AAA				
10A	Coupling 4P D:18	KL10AAG	<b>4P -&gt; 160/03</b>			
11	Valves and Plugs	KL34AAA				
14	Reversing flap	KL52AAA	<b>All Versions, DN40</b>			

### Single Unit

1	Pump body	151351200	151351200	151351200	151351200	151351210	151351210	151351210	151351210	
3	Seal Housing disc	160150201	160150201	150150041	150150041	150150071	150150071	150150071	150150071	
		160150201	160150201	150150041	150150041		150150071	150150071	150150071	
4	Adaptor 2P	161430511	161430511	161430511	161430511	161452891	161452891	161452881	161452881	
	Adaptor 4P	161430521	161430521	161430521	161430521		161452881	161452881	161452881	
5	Wear ring	168601491	168601491	168601491	168601491	168601491	168601491	168601491	168601491	
6	Back wear ring			465020201	465020201	465020201	465020201	465020201	465020201	
9**	Motor 1~, 2P	107230250	107230260	107230270	50004HH00					
	Motor 3 ~, 2P, IE2 >	107230230	107230240	50000RN00	50001RN00	50008VN00	50008VN00	50013VH00	50017VH00	50019VH00
	Motor 3 ~, 2P, IE3 >	107234040	107234050	107234060	50001RN00	50008VN00	50008VN00	50013VH00	50017VH00	50019VH00
	Motor 3 ~, 4P						107230840	107241530	50005RS00	50006RS00
9A**	Motor 3 ~, 4P	107230620	107230620	107230620	107230680					

Seal housing disc = disc + back wear ring

FCT Imp. Dia = FC Imp. Dia.

\* Recommended spare parts - Parti di ricambio consigliate

\* Pièces détachées conseillées - Empfohlene Ersatzteile

\*\* Motor spare parts: see motor lists - Parti di ricambio motore: vedi liste motore

\*\* Pièces détachées Moteur : voir listes moteur - Motor-Ersatzteile: gem. Motorlisten

FCTE\_40-100\_IE2\_5\_June11\_EdB

## FCTEM 50 - FCTE 50 - FCTE4 50

<b>FCTEM</b>	50-125/11	50-125/15	50-160/22/P							
ELP 1 ~, 2P, 50	102180050	102180060	101260070							
<b>FCTE</b>	50-125/11/C	50-125/15/C	50-160/22/C	50-160/30/P	50-160/40/P	50-200/55/P	50-200/75/P	50-250/92/P	50-250/110/P	50-250/150/P
ELP 3 ~, 2P, 50, IE2	104390650	104390660	104390670	101260220	101260230	101260240	101260250	101260260	101260270	101260280
	50-125/11/D	50-125/15/D	50-160/22/C	50-160/30/P	50-160/40/P	50-200/55/P	50-200/75/P	50-250/92/P	50-250/110/P	50-250/150/P
ELP 3 ~, 2P, 50, IE3	104564490	104564500	104390670	101260220	101260230	101260240	101260250	101260260	101260270	101260280
kW ->	<b>1,1</b>	<b>1,5</b>	<b>2,2</b>	<b>3,0</b>	<b>4,0</b>	<b>5,5</b>	<b>7,5</b>	<b>9,2</b>	<b>11</b>	<b>15</b>
<b>FCTE4</b>			50-125/02	50-125/03	50-160/05	50-200/07/C	50-200/11/P		50-250/15/P	50-250/22/P
ELP 3 ~, 4P, 50			102180680	102180690	102180700	104393120	101260720		101260730	101260740
kW ->			<b>0,25</b>	<b>0,37</b>	<b>0,55</b>	<b>0,75</b>	<b>1,1</b>		<b>1,5</b>	<b>2,2</b>
	FCTE/D: motors IE3 fitted			FCTE/C, /P: motors IE2 fitted			FCTE: motors IE1 fitted			

### Kit

2*	Impeller 2P	KL04ABF	KL04ABG	KL04ABH	KL04ABK	KL04ABL	KL04ABM	KL04ABN	KL04ABP	KL04ABQ	KL04ABR
	Impeller 4P			KL04ABH	KL04ABK	KL04ABL	KL04ABM	KL04ABN		KL04ABQ	KL04ABR

7*	Material -->	<b>VBEGG</b>	<b>Q1Q1EGG</b>	<b>VBVGG</b>	<b>Q1Q1VGG</b>	<b>2P-&gt;250/110</b>	STD ->Seal VBEGG - OR EPDM
	Seal D22 Kit	KL01AAS	KL01ABZ	KL01AB2	KL01AB5	<b>4P-&gt;250/15</b>	
	Material -->	<b>VBEGG</b>	<b>Q1Q1EGG</b>	<b>VBVGG</b>	<b>Q1Q1VGG</b>	<b>2P - 250/150</b>	
	Seal D28 Kit	KL01AAV	KL01AB0	KL01AB3	KL01AB6	<b>4P-250/22</b>	
8*	OR EPDM Kit	KL02AAH	<b>Incl. 3 Dia - OR .</b>				
	OR NBR Kit	KL02AAK	<b>Incl. 3 Dia - OR .</b>				
10	Imp.lock kit M12	KL39AAA	<b>2P-&gt;250/110; 4P-&gt;250/15</b>				
	Imp.lock kit M16	KL39AAB	<b>2P: 250/150; 4P: 250/22</b>				
10A	Coupling 4P D:18	KL10AAG	<b>4P -&gt;125/03</b>				
11	Valves and Plugs	KL34AAA					
14	Reversing flap	KL52AAB	<b>All Versions, DN50</b>				

### Single Unit

1	Pump body	151351220	151351220	151351220	151351220	151351220	151351220	151351220	151351240	151351240	151351240
3	Seal-housing disc	160150201	160150201	160150201	150150041	150150041	150150071	150150071	150150071	150150071	150150091
4	Adaptor 2P	161430511	161430511	161430511	161430511	161430521	161452891	161452881	161452881	161452881	161452841
4	Adaptor 4P			161430521	161430521	161430511	161452881	161452881		161452881	161452841
5	Wear ring	168601500	168601500	168601500	168601500	168601500	168601500	168601500	168601511	168601511	168601511
6	Back wear ring				465020201	465020201	465020201	465020201	465020201	465020201	465020201
9**	Motor 1 ~, 2P	107230260	107230270	50004HH00							
	Motor 3 ~, 2P, IE2 >	107230240	50000RN00	50001RN00	50002RH00	50008VN00	50013VH00	50017VH00	50018VH00	50019VH00	50024VP00
	Motor 3 ~, 2P, IE3 >	107234050	107234060	50001RN00	50002RH00	50008VN00	50013VH00	50017VH00	50018VH00	50019VH00	50024VP00
	Motor 3 ~, 4P					107230830	107241530	50005RS00		50006RS00	50010RT00
9A**	Motor 3 ~, 4P			107230620	107230680						

Seal housing disc = disc + back wear ring

FCT Imp. Dia = FC Imp. Dia.

\* Recommended spare parts - Parti di ricambio consigliate

\* Pièces détachées conseillées - Empfohlene Ersatzteile

\*\* Motor spare parts: see motor lists - Parti di ricambio motore: vedi liste motore

\*\* Pièces détachées Moteur : voir listes moteur - Motor-Ersatzteile: gem. Motorlisten

FCTE\_40-100\_IE2\_5\_June11\_EdB

## FCTEM 65 - FCTE 65 - FCTE4 65

<b>FCTEM</b>	65-125/22/P									
ELP 1 ~, 2P, 50	101260080									
<b>FCTE</b>	65-125/22/C	65-125/30/P	65-125/40/P	65-160/55/P	65-160/75/P	65-200/92/P	65-200/110/P	65-250/150/P	65-250/185/P	65-250/220/P
ELP 3 ~, 2P, 50	104390700	101260300	101260310	101260320	101260330	101260340	101260350	101260360	101260370	101260380
kW->	2,2	3,0	4,0	5,5	7,5	9,2	11,0	15,0	18,5	22,0
<b>FCTE4</b>		65-125/03	65-125/05	65-160/07	65-160/11/P		65-200/15/P		65-250/22/P	65-250/30/P
ELP ~, 4P, 50		102180750	102180760	102180770	101260780		101260790		101260800	101260810
kW->		0,37	0,55	0,75	1,1		1,5		2,2	3,0
	FCTE/D: motors IE3 fitted			FCTE/C, /P: motors IE2 fitted			FCTE: motors IE1 fitted			

### Kit

2*	Impeller 2P	KL04ABS	KL04ABT	KL04ABU	KL04ABV	KL04ABW	KL04ABX	KL04ABY	KL04ABZ	KL04AB0	KL04AB1
	Impeller 4P		KL04ABT	KL04ABU	KL04ABV	KL04ABW		KL04ABY		KL04AB0	KL04AB1

7*	Material -->	<b>VBEGG</b>	<b>Q1Q1EGG</b>	<b>VBVGG</b>	<b>Q1Q1VGG</b>	2P->200/110	STD ->Seal VBEGG - OR EPDM
	Seal D22 Kit	KL01AAS	KL01ABZ	KL01AB2	KL01AB5	4P->200/15	
	Material -->	<b>VBEGG</b>	<b>Q1Q1EGG</b>	<b>VBVGG</b>	<b>Q1Q1VGG</b>	2P->250/220	
	Seal D28 Kit	KL01AAV	KL01AB0	KL01AB3	KL01AB6	4P ->250/30	
8*	OR EPDM Kit	KL02AAH	<b>All Versions incl. 3 Dia-OR</b>				
	OR FPM Kit	KL02AAK	<b>All Versions incl. 3 Dia-OR</b>				
10	Imp. lock Kit M12	KL39AAA	<b>2P -&gt;200/110; 4P-&gt;200/15</b>				
	Imp. lock Kit M16	KL39AAB	<b>2P - 4P: All models 250</b>				
10A	Coupling 4P D:18	KL10AAG	<b>4P -&gt;125/03</b>				
11	Valves and Plugs	KL34AAA					
14	Reversing flap	KL52AAC	<b>All Versions, DN 65</b>				

### Single Unit

1	Pump body	151351250	151351250	151351250	151351250	151351250	151351260	151351260	151351260	151351260	151351260
3	Seal-housing disc	160150221	160150221	160150221	160150221	160150221	150150071	150150071	150150091	150150091	150150091
4	Adaptor 2P	161453131	161453131	161453141	161453141	161453151	161452881	161452881	161452841	161452841	161452841
	Adaptor 4P		161453141	161453151	161453151	161453151		161452881		161452841	161452841
5	Wear ring	168601511	168601511	168601511	168601511	168601511	168601511	168601511	168601511	168601511	168601511
6	Back wear ring				465020201	465020201	465020201	465020201	465020201	465020201	465020201
9**	Motor 1 ~, 2P	50004HH00									
	Motor 3 ~, 2P	50001RN00	50002RH00	50008VN00	50013VH00	50017VH00	50018VH00	50019VH00	50024VP00	50025VP00	50026VP00
	Motor 3 ~, 4P			107230840	107241530	50005RS00		50006RS00		50010RT00	50011RT00
9A**	Motor 3 ~, 4P		107230680								

Seal housing disc = disc + back wear ring

FCT Imp. Dia = FC Imp. Dia.

\* Recommended spare parts - Parti di ricambio consigliate

\* Pièces détachées conseillées - Empfohlene Ersatzteile

\*\* Motor spare parts: see motor lists - Parti di ricambio motore: vedi liste motore

\*\* Pièces détachées Moteur : voir listes moteur - Motor-Ersatzteile: gem. Motorlisten

FCTE\_40-100\_IE2\_5\_June11\_EdB

## FCTE 80 - FCTE4 80

<b>FCTE</b>	80-125/30/P	80-125/40/P	80-125/55/P	80-160/75/P	80-200/110/P	80-200/150/P	80-200/185/P	80-200/220/P		
ELP. 3~, 2P,50	101260390	101260400	101260410	101260420	101260430	101260440	101260450	101260460		
kW ->	<b>3,0</b>	<b>4,0</b>	<b>5,5</b>	<b>7,5</b>	<b>11,0</b>	<b>15,0</b>	<b>18,5</b>	<b>22,0</b>		
<b>FCTE4</b>			80-125/07/C	80-125/11/P	80-200/15/P		80-200/22/P	80-200/30/P	80-250/40/P	80-250/55/P
ELP. 3~, 4P, 50			104393160	101260830	101260840		101260850	101260860	101260870	101260880
kW ->			<b>0,75</b>	<b>1,1</b>	<b>1,5</b>		<b>2,2</b>	<b>3,0</b>	<b>4,0</b>	<b>5,5</b>
	FCTE/D: motors IE3 fitted			FCTE/C, /P: motors IE2 fitted			FCTE: motors IE1 fitted			

### Kit

2*	Impeller 2P	KL04AC8	KL04AB2	KL04AB3	KL04AB4	KL04AB6	KL04AB8	KL04AB9	KL04ACA		
	Impeller 4P			KL04AB3	KL04AB4	KL04ALE		KL04AB9	KL04ACA	KL04ALA	KL04ALB

7*	Material ->	<b>VBEGG</b>	<b>Q1Q1EGG</b>	<b>VBVGG</b>	<b>Q1Q1VGG</b>	2P->160/75					
	Seal D22 Kit	KL01AAS	KL01ABZ	KL01AB2	KL01AB5	4P ->125/11					
	Material ->	<b>VBEGG</b>	<b>Q1Q1EGG</b>	<b>VBVGG</b>	<b>Q1Q1VGG</b>	2P-> 200/220					
	Seal D28 Kit	KL01AAV	KL01AB0	KL01AB3	KL01AB6	4P-> 250/55	STD ->Seal VBEGG - OR EPDM				
8*	OR EPDM Kit	KL02AAH	<b>All Versions incl. 3 Dia - OR</b>								
	OR FPM Kit	KL02AAK	<b>All Versions incl. 3 Dia - OR.</b>								
10	Imp.lock kit M12	KL39AAA	<b>2P-&gt;160/75; 4P-&gt;125/11</b>								
	Imp.lock kit M16	KL39AAB	<b>2P-&gt;200/220; 4P-&gt;250/55</b>								
11	Valves and Plugs	KL34AAA									
14	Reversing flap	KL52AAD	<b>All Versions, DN80</b>								

### Single Unit, 2P

1	Pump body	151351270	151351270	151351270	151351270	151351280	151351280	151351280	151351280		
3	Seal-housing disc	160150221	160150221	160150221	160150221	150150081	150150081	150150081	150150081		
4	Adaptor	161453131	161453141	161453141	161453151	161452881	161452841	161452841	161452841		
5	Wear ring	168601521	168601521	168601521	168601521	168601580	168601580	168601580	168601580		
6	Back wear ring					168601270	168601270	168601270	168601270		
9**	Motor 3 ~, 2 P	50002RH00	50008VN00	50013VH00	50017VH00	50019VP00	50024VP00	50025VP00	50026VP00		

### Single Unit, 4P

1	Pump body			151351270	151351270	151351280		151351280	151351280	151351280	151351280
3	Seal-housing disc			160150221	160150221	150150081		150150081	150150081	150150081	150150081
4	Adaptor			161453151	161453151	161452881		161452841	161452841	161452841	161452881
5	Wear ring			168601521	168601521	168601580		168601580	168601580	168601580	168601580
6	Back wear ring					168601270		168601270	168601270	168601270	168601270
9**	Motor 3 ~, 4P			107241530	50005RS00	50006RT00		50010RT00	50011RT00	50015VT00	50020VP00

Seal housing disc = disc + back wear ring

FCT Imp. Dia = FC Imp. Dia.

\* Recommended spare parts - Parti di ricambio consigliate

\* Pièces détachées conseillées - Empfohlene Ersatzteile

\*\* Motor spare parts: see motor lists - Parti di ricambio motore: vedi liste motore

\*\* Pièces détachées Moteur : voir listes moteur - Motor-Ersatzteile: gem. Motorlisten

FCTE\_40-100\_IE2\_5\_June11\_EdB

## FCTE 100/P - FCTE4 100/P

<b>FCTE</b>		100-160/110/P	100-200/185/P	100-200/220/P			
ELP 3 ~, 2P, 50		101260470	101260480	101260490			
kW ->		11,0	18,5	22,0			
<b>FCTE4</b>		100-160/15/P	100-200/22/P	100-200/30/P	100-250/40/P	100-250/55/P	100-250/75/P
ELP 3 ~, 4P, 50		101260890	101260900	101260910	101260920	101260930	101260940
kW ->		1,5	2,2	3,0	4,0	5,5	7,5
		FCTE/D: motors IE3 fitted		FCTE/C, /P: motors IE2 fitted		FCTE: motors IE1 fitted	

### Kit

2*	Impeller, 2P		KL04AK6	KL04AK1	KL04AK2			
	Impeller, 4P	KL04AK0		KL04AK1	KL04AK2	KL04AK4	KL04AK5	KL04ALD

7*	Material -->	<b>VBEGG</b>	<b>Q1Q1EGG</b>	<b>VBVGG</b>	<b>Q1Q1VGG</b>	2P->200/220	
	Seal D28 kit	KL01AAV	KL01AB0	KL01AB3	KL01AB6	4P->250/40	
	Material -->	<b>VBEGG</b>	<b>Q1Q1EGG</b>	<b>VBVGG</b>	<b>Q1Q1VGG</b>	-	
	Seal D33 kit	KL01ABV	KL01AB1	KL01AB4	KL01AB7	4P->250/75	STD ->Seal VBEGG - OR EPDM
8*	OR EPDM Kit	KL02AAH	<b>All Versions incl. 3 Dia - OR</b>				
	OR FPM Kit	KL02AAK	<b>All Versions incl. 3 Dia - OR</b>				
10	Imp. lock Kit M16	KL39AAB	<b>2P; 4P-&gt;250/40</b>				
	Imp. lock Kit M20	KL39AAC	<b>4P-&gt;250/75</b>				
11	Valves and plugs	KL34AAA					
14	Reversing flap	KL52AAE	<b>All Versions, DN 100</b>				

### Single Unit

1	Pump body		151351290	151351300	151351300		
		151351290		151351300	151351300	151351300	151351300
3	Seal-housing disc		150150061	150150081	150150081		
		150150061		150150081	150150081	150150101	150150101
4	Adaptor 2P		161453151	161452841	161452841		
	Adaptor 4P	161453151		161452841	161452841	161452881	161452881
5	Wear ring		168601270	168601270	168601270		
		168601270		168601270	168601270	168601270	168601270
6	Back wear ring		168601270	168601270	168601270		
		168601270		168601270	168601270	168601270	168601270
9**	Motor 3 ~, 2P		50019VP00	50025VP00	50026VP00		
	Motor 3 ~, 4P	50006RT00		50010RT00	50011RT00	50015VT00	50020VJ00

Seal housing disc = disc + back wear ring

FCT Imp. Dia = FC Imp. Dia.

\* Recommended spare parts - Parti di ricambio consigliate

\* Pièces détachées conseillées - Empfohlene Ersatzteile

\*\* Motor spare parts: see motor lists - Parti di ricambio motore: vedi liste motore

\*\* Pièces détachées Moteur : voir listes moteur - Motor-Ersatzteile: gem. Motorlisten

FCTE\_40-100\_IE2\_5\_June11\_EdB



FCTBE/P, Impeller (Item 2) - Motor (Item 9) Part Number

80	<b>80-200/110/P</b>	<b>80-200/150/P</b>	<b>80-200/185/P</b>	<b>80-200/220/P</b>			
	101260500	101260510	101260520	101260530			
	11 kW	15 kW	18,5 kW	22 kW			
2->	160720510	160720520	160720500	160720540			
9->	50019VP00	50024VP00	50025VP00	50026VP00			
	<b>480-200/15/P</b>			<b>480-200/22/P</b>	<b>480-200/30/P</b>	<b>480-250/40/P</b>	<b>480-250/55/P</b>
	101260950			101260960	101260970	101260980	101260990
	1,5 kW			2,2 kW	3,0 Kw	4,0 kW	5,5 kW
2->	160720500			160720500	160720540	160720590	160720600
9->	50006RT00			50010RT00	50011RT00	50015VT00	50020VP00
100	<b>100-160/110/P</b>	<b>100-200/185/P</b>	<b>100-200/220/P</b>				
	101260540	101260550	101260560				
	11 kW	18.5 kW	22 kW				
2->	160720680	160720720	160720780				
9->	50019VP00	50025VP00	50026VP00				
	<b>4100-160/15/P</b>	<b>4100-200/22/P</b>	<b>4100-200/30/P</b>	<b>4100-250/40/P</b>	<b>4100-250/55/P</b>	<b>4100-250/75/P</b>	
	101261000	101261010	101261020	101261030	101261040	101261050	
	1,5 kW	2,2 kW	3 kW	4 kW	5,5 kW	7,5 kW	
2->	160720700	160720720	160720780	160720850	160720900	160720910	
9->	50006RT00	50010RT00	50011RT00	50015VT00	50020VJ00	50021VJ00	

FCTE\_40-100\_5\_June11\_EdB

xylem