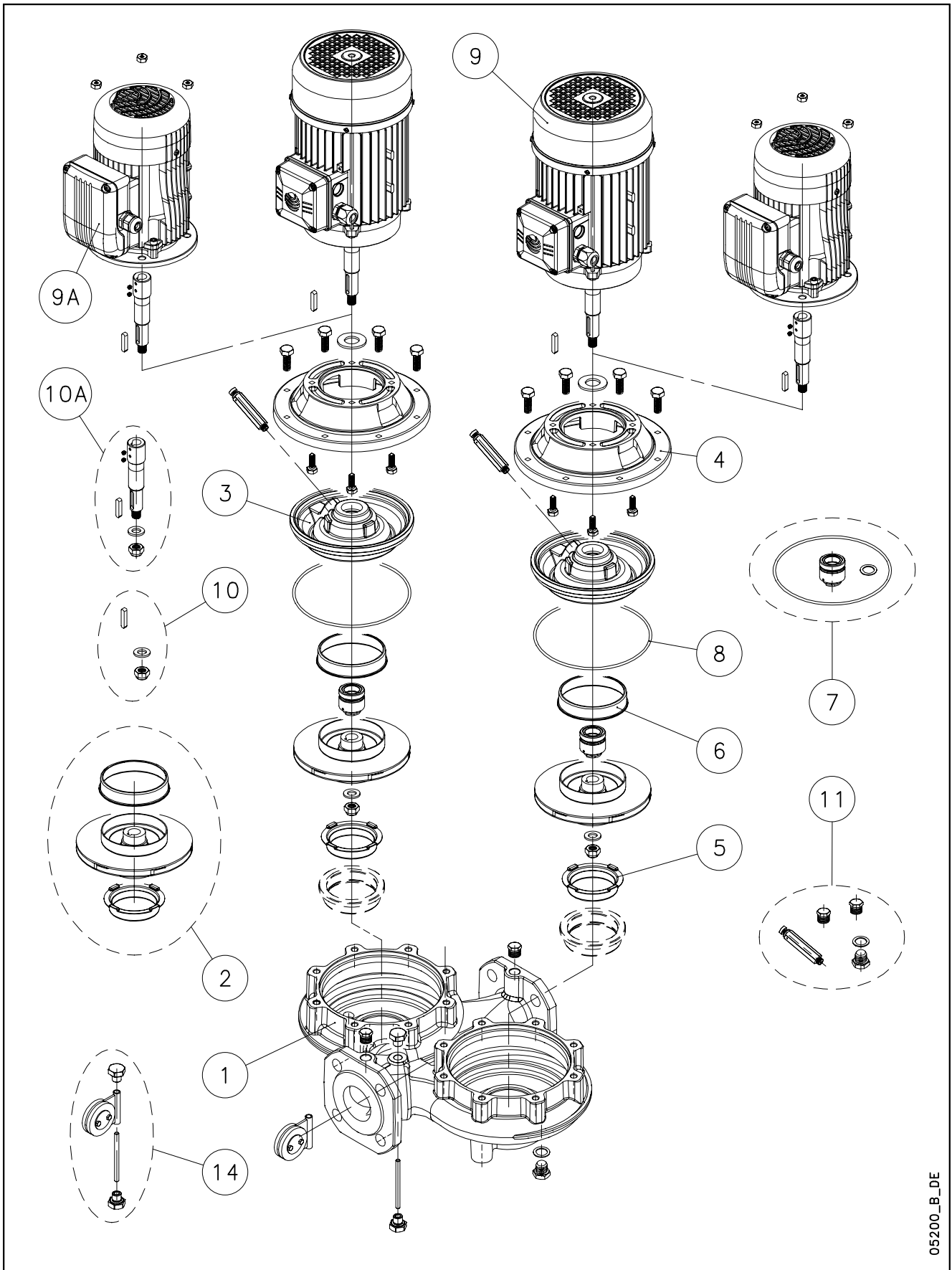


## FCTE-FCTE4 / LHTX-LHTX4



05200\_B\_DE

Lowara, Flygt and Vogel Pumpen are a trademark of Xylem Inc. or one of its subsidiaries. Goulds is a registered trademark of Goulds Pumps, Inc. and is used under license.

N.	Descrizione it	Description en	Description fr	Beschreibung de	Descripción es	Descrição pt
1	Corpo pompa completo	Complete pump body	Corps de pompe complete	Kompletter pumpengehäuse	Caja bomba completa	Corpo da bomba complete
2	Girante e anelli di usura	Impeller and wear rings	Roue et anneaux d'usure	Laufrad und Verschleißringe	Rodete y anillos de desgaste	Impulsor e anéis compensadores de desgaste
3	Disco portatenuta (con anello di usura)	Seal housing disc (with wear ring)	Disque d'étanchéité (avec anneau d'usure)	Dichtungsscheibe (mit Ausgleichsring)	Disco de alojamiento retén (con anillo de desgaste)	Disco porta-vedante (com anel compensador de desgaste)
4	Lanterna	Adaptor	Lanterne	Antriebslaterne	Adaptador	Adaptador
5	Rasamento anteriore	Front wear plate	Bague pour régulation du jeu axial avant	Vordere Ausgleichsscheibe	Espesor delantero	Casquilho anterior
6	Rasamento posteriore	Back wear plate	Bague pour régulation du jeu axial arrière	Hintere Ausgleichsscheibe	Espesor trasero	Casquilho posterior
7	Tenuta meccanica e guarnizione OR	Mechanical seal and O-Ring	Garniture mécanique et joint torique	Gleitringdichtung und O-Ring	Retén mecánico y aro tórico	Vedante mecânico e vedação OR
8	Guarnizione OR	O-Ring	Joint torique	O-Ring	Aro tórico	Vedação OR
9	Motore completo	Complete motor	Moteur complet	Kompletter Motor	Motor completo	Motor complete
9A	Motore completo (solo 4 poli grandezza 71)	Complete motor (4-poles size 71 only)	Moteur complet (uniquement 4 pôles taille 71)	Kompletter Motor (nur 4polig Größe 71)	Motor completo (só 4 polos tamaño 71)	Motor complete (só 4 pólos grandezza 71)
10	Gruppo fissaggio girante (dado, rosetta e linguetta)	Impeller locking group (nut, washer and key)	Groupe de fixation roue (ecrou, rondelle et clavette)	Befestigungsgruppe Laufrads auf (Feststellmutter, Unterlegscheibe und Passfeder)	Grupo de fijación rodete (tuerca, arandela y lengüeta)	Grupo de fixação do impulsor (porca, anilha e lingueta)
10A	Giunto con gruppo fissaggio girante (solo 4 poli grandezza 71)	Coupling with impeller locking group (4-poles size 71 only)	Manchon avec groupe de fixation roue (uniquement 4 pôles taille 71)	Kupplung mit Befestigungsgruppe Laufrad (nur 4polig Größe 71)	Junta con grupo de fijación rodete (só 4 polos tamaño 71)	Junta com grupo de fixação do impulsor (só 4 pólos grandezza 71)
11	Valvola e tappi	Valve and plugs	Vanne et bouchons	Ventil und Stutzin	Válvula y tapones	Válvula e tampões
14	Valvola a clapet	Clapet valve	Vanne à clapet	Scharnierventil	Válvula de clapeta	Válvula de clapet
N.	Beschrijving nl	Περιγραφή el	Açıklama tr	Kuvaus fi	Описание ru	Opis pl
1	Compleet pomphuis	Πλήρες σώμα αντλίας	Komple pompa göndesi	Täydellinen pumpun runko	Полный корпус насоса	Kompletny korpus pompy
2	Waaier en slijtringen	Πτερύγιο και δακτύλιοι τριβής	Pompa rotoru ve aşınma halkaları	Juoksupyörä ja kulumisrenkaat	Рабочее колесо и изнашиваемые кольца	Wirnik i pierścienie wymienne
3	Dichtingssteunplaat (met slijtring)	Δίσκος μηχανικού στυπιοθλίπτη και δακτύλιοι τριβής	Sızdırmazlık diski (aşınma halkası ile)	Tiivisteenn kannatuslevy (kulumisrenkaalla)	Диск держателя прокладки (с изнашиваемым кольцом)	Tarcza uszczelki (z wymiennym pierścieniem)
4	Lantaarnstuk	Μπρακέτο	Adaptör	Sovitin	Адаптер	Lampa
5	Voorste schraapring	Πρόσθιος δακτύλιος τριβής	Ön ara halkası	Etuvalilevy	Передняя утолщающая прокладка	Wyglądanie przednie
6	Achterste schraapring	Οπίσθιος δακτύλιος τριβής	Arka ara halkası	Takavalilevy	Задняя утолщающая прокладка	Wyglądanie tylne
7	Mechanische asafdichting en O-ringafdichting	Μηχανικός στυπιοθλίπτης και ροδέλες στεγανοποίησης	Mekanik conta ve O-Ring	Mekaaninen tiiviste ja O-rengas	Механическая прокладка и уплотнение OR	Uszczelnienie mechaniczne i uszczelka O-Ring
8	O-ringafdichting	Ροδέλα στεγανοποίησης	O-Ring	O-rengas	Прокладка OR	Uszczelka O-Ring
9	Complete motor	Πλήρης κινητήρας	Komple motor	Täydellinen moottori	Укомплектованный двигатель	Kompletny silnik
9A	Complete motor (alleen 4-polig grootte 71)	Πλήρης κινητήρας (τετραπολικός μόνο μεγέθους 71)	Komple motor (sadece 4 kutuplu; boyu: 71)	Täydellinen moottori (ainoastaan 4 napaa, koko 71)	Укомплектованный двигатель (только 4 полюса величина 71)	Kompletny silnik (tylko 4 bieguny wielkość 71)
10	Waaierbevestigingsblok (moer, ring en spie)	Σετ ασφάλισης περυγίου (παξιμάδι, ροδέλα, σφήνα)	Pompa rotorunu sabitleme takımı (somun, rondela ve kama)	Juoksupyörän kiinnityskokonaisuus (mutteri, välirengas ja kiila)	Узел фиксации рабочего колеса (гайка, шайба и шпонка)	Zespół mocujący wirnika (nakrętka, podkładka i wpust)
10A	Koppeling met waaierbevestigingsblok (alleen 4-polig grootte 71)	Προέκταση άξονα και σετ ασφάλισης περυγίου	Pompa rotorunu sabitleme takımı ile mafsal (sadece 4 kutuplu; boyu: 71)	Liitos juoksupyörän kiinnityskokonaisuudella (ainoastaan 4 napaa, koko 71)	Соединение с узлом фиксации рабочего колеса (только 4 полюса величина 71)	Złącze z zespołem mocującym wirnika (tylko 4 bieguny wielkość 71)
11	Klep en doppen	Βαλβίδα εξαέρωσης και τάπες	Valf ve tapalar	Venttiili ja tulpat	Клапан и заглушки	Zawór i nakrętki
14	Terugslagklep	Κλαπέ	Klapeli valf	Läppäventtiili	Клапан и вантуз	Zawór klapowy

## FCTEM 40 - FCTE 40 - FCTE4 40

	40-125/07	40-125/11	40-160/15	40-160/22	40-200/40A	40-200/40	40-200/55	40-250/75	40-250/110
ELP 1 ~, 2P, 50	102180010	102180020	102180030	102180040					
ELP 3 ~, 2P, 50	102180100	102180110	102180120	102180130	102180140	102180150	102180160	102180170	102180180
kw ->	0,75	1,1	1,5	2,2	4,0	4,0	5,5	7,5	11,0
	40-125/02A	40-125/02	40-160/02	40-160/03		40-200/05	40-200/07	40-250/11	40-250/15
ELP 3 ~, 4P, 50	102180600	102180610	102180620	102180630		102180640	102180650	102180660	102180670
kw ->	0,25	0,25	0,25	0,37		0,55	0,75	1,1	1,5

### Kit

2*	Impeller 2P	KL04AA9	KL04ABA	KL04ABB	KL04ABC	KL04ABD	KL04ABE	KL04ACK	KL04ACL	KL04ACM
	Impeller 4P	KL04AA9	KL04ABA	KL04ABB	KL04ABC		KL04ABE	KL04ACK	KL04ACL	KL04ACM

7*	Material-->	VBEGG	Q1Q1EGG	VBVGG	Q1Q1VGG					
	Seal D22 kit	KL01AA5	KL01ABZ	KL01AB2	KL01AB5	STD -> Seal VBEGG - OR EPDM				
8*	OR EPDM Kit	KL02AAH	All Versions incl. 3 Dia - OR							
	OR FPM Kit	KL02AAK	All Versions incl. 3 Dia - OR.							
10	Imp. lock kit M12	KL39AAA								
10A	Coupling 4P D:18	KL10AAG	4P -> 160/03							
11	Valves and Plugs	KL34AAA								
14	Reversing flap	KL52AAA	All Versions, DN40							

### Single Unit

1	Pump body	151351200	151351200	151351200	151351200	151351210	151351210	151351210	151351210	151351210
3	Seal Housing disc	160150201	160150201	150150041	150150041	150150071	150150071	150150071	150150071	150150071
		160150201	160150201	150150041	150150041	150150071	150150071	150150071	150150071	150150071
4	Adaptor 2P	161430511	161430511	161430511	161430511	161452891	161452891	161452891	161452891	161452881
	Adaptor 4P	161430521	161430521	161430521	161430521		161452881	161452881	161452881	161452881
5	Wear ring	168601491	168601491	168601491	168601491	168601491	168601491	168601491	168601491	168601491
6	Back wear ring			465020201	465020201	465020201	465020201	465020201	465020201	465020201
9**	Motor 1 ~, 2P	13278H00E	13278H00F	13282H00F	130647082					
	Motor 3 ~, 2P	13274R00E	13274R00F	13278R00F	13282R00F	130647105	130647105	130647137	130647143	130647263
	Motor 3 ~, 4P						13275R00J	13279R00J	130647601	130647610
9A**	Motor 3 ~, 4P	13258R00L	13258R00L	13258R00L	13262R00L					

Seal housing disc - disc + back wear ring

FCT Imp. Dia = FC Imp. Dia.

\* Recommended spare parts - Parti di ricambio consigliate

\* Pièces détachées conseillées - Empfohlene Ersatzteile

\*\* Motor spare parts: see motor lists - Parti di ricambio motore: vedi liste motore

\*\* Pièces détachées Moteur : voir listes moteur - Motor-Ersatzteile: gem. Motorlisten

FCTE40-100\_5\_May05\_EdD

## FCTEM 50 - FCTE 50 - FCTE4 50

	50-125/11	50-125/15	50-160/22	50-160/30	50-160/40	50-200/55	50-200/75	50-250/92	50-250/110	50-250/150
ELP 1 ~, 2P, 50	102180050	102180060	102180070							
ELP 3 ~, 2P, 50	102180190	102180200	102180210	102180220	102180230	102180240	102180250	102180260	102180270	102180280
kW ->	1,1	1,5	2,2	3,0	4,0	5,5	7,5	9,2	11	15
			50-125/02	50-125/03	50-160/05	50-200/07	50-200/11		50-250/15	50-250/22
ELP 3 ~, 4P, 50			102180680	102180690	102180700	102180710	102180720		102180730	102180740
kW ->			0,25	0,37	0,55	0,75	1,1		1,5	2,2

### Kit

2*	Impeller 2P	KL04ABF	KL04ABG	KL04ABH	KL04ABK	KL04ABL	KL04ABM	KL04ABN	KL04ABP	KL04ABQ	KL04ABR
	Impeller 4P			KL04ABH	KL04ABK	KL04ABL	KL04ABM	KL04ABN		KL04ABQ	KL04ABR

7*	Material -->	<b>VBEGG</b>	<b>Q1Q1EGG</b>	<b>VBVGG</b>	<b>Q1Q1VGG</b>	2P->250/110	STD -> Seal VBEGG - OR EPDM
	Seal D22 Kit	KL01AAS	KL01ABZ	KL01AB2	KL01AB5	4P->250/15	
	Material -->	<b>VBEGG</b>	<b>Q1Q1EGG</b>	<b>VBVGG</b>	<b>Q1Q1VGG</b>	2P - 250/150	
	Seal D28 Kit	KL01AAV	KL01AB0	KL01AB3	KL01AB6	4P-250/22	
8*	OR EPDM Kit	KL02AAH	incl. 3 Dia - OR .				
	OR NBR Kit	KL02AAK	incl. 3 Dia - OR .				
10	Imp.lock kit M12	KL39AAA	2P->250/110; 4P->250/15				
	Imp.lock kit M16	KL39AAB	2P: 250/150; 4P: 250/22				
10A	Coupling 4P D:18	KL10AAG	4P -> 125/03				
11	Valves and Plugs	KL34AAA					
14	Reversing flap	KL52AAB	All Versions, DN50				

### Single Unit

1	Pump body	151351220	151351220	151351220	151351220	151351220	151351220	151351220	151351240	151351240	151351240
3	Seal-housing disc	160150201	160150201	160150201	150150041	150150041	150150071	150150071	150150071	150150071	150150091
4	Adaptor 2P	161430511	161430511	161430511	161430511	161430521	161452891	161452891	161452881	161452881	161452841
4	Adaptor 4P			161430521	161430521	161430511	161452881	161452881		161452881	161452841
5	Wear ring	168601500	168601500	168601500	168601500	168601500	168601500	168601500	168601511	168601511	168601511
6	Back wear ring			465020201	465020201	465020201	465020201	465020201	465020201	465020201	465020201
9**	Motor 1 ~, 2P	13278H00F	13282H00F	130647082							
	Motor 3 ~, 2P	13274R00F	13278R00F	13282R00F	130647063	130647105	130647137	130647143	130647253	130647263	130647304
	Motor 3 ~, 4P					13275R00F	13279R00J	130647601		130647610	130647661
9A**	Motor 3 ~, 4P		13258R00L	13262R00L							

Seal housing disc - disc + back wear ring

FCT Imp. Dia = FC Imp. Dia.

\* Recommended spare parts - Parti di ricambio consigliate

\* Pièces détachées conseillées - Empfohlene Ersatzteile

\*\* Motor spare parts: see motor lists - Parti di ricambio motore: vedi liste motore

\*\* Pièces détachées Moteur : voir listes moteur - Motor-Ersatzteile: gem. Motorlisten

FCTE40-100\_5\_May05\_EdD

## FCTEM 65 - FCTE 65 - FCTE4 65

	65-125/22	65-125/30	65-125/40	65-160/55	65-160/75	65-200/92	65-200/110	65-250/150	65-250/185	65-250/220
ELP 1 ~, 2P, 50	102180080									
ELP 3 ~, 2P, 50	102180290	102180300	102180310	102180320	102180330	102180340	102180350	102180360	102180370	102180380
kW->	<b>2,2</b>	<b>3,0</b>	<b>4,0</b>	<b>5,5</b>	<b>7,5</b>	<b>9,2</b>	<b>11,0</b>	<b>15,0</b>	<b>18,5</b>	<b>22,0</b>
		<b>65-125/03</b>	<b>65-125/05</b>	<b>65-160/07</b>	<b>65-160/11</b>		<b>65-200/15</b>		<b>65-250/22</b>	<b>65-250/30</b>
ELP3~, 4P, 50		102180750	102180760	102180770	102180780		102180790		102180800	102180810
kW->		<b>0,37</b>	<b>0,55</b>	<b>0,75</b>	<b>1,1</b>		<b>1,5</b>		<b>2,2</b>	<b>3,0</b>

### Kit

2*	Impeller 2P	KL04ABS	KL04ABT	KL04ABU	KL04ABV	KL04ABW	KL04ABX	KL04ABY	KL04ABZ	KL04AB0	KL04AB1
	Impeller 4P		KL04ABT	KL04ABU	KL04ABV	KL04ABW		KL04ABY		KL04AB0	KL04AB1

7*	Material -->	<b>VBEGG</b>	<b>Q1Q1EGG</b>	<b>VBVGG</b>	<b>Q1Q1VGG</b>	2P->200/110	STD -> Seal VBEGG - OR EPDM
	Seal D22 Kit	KL01AAS	KL01ABZ	KL01AB2	KL01AB5	4P->200/15	
	Material -->	<b>VBEGG</b>	<b>Q1Q1EGG</b>	<b>VBVGG</b>	<b>Q1Q1VGG</b>	2P->250/220	
	Seal D28 Kit	KL01AAV	KL01AB0	KL01AB3	KL01AB6	4P ->250/30	
8*	OR EPDM Kit	KL02AAH	<b>All Versions incl. 3 Dia-OR</b>				
	OR FPM Kit	KL02AAK	<b>All Versions incl. 3 Dia-OR</b>				
10	Imp. lock Kit M12	KL39AAA	<b>2P -&gt;200/110; 4P-&gt;200/15</b>				
	Imp. lock Kit M16	KL39AAB	<b>2P - 4P: All models 250</b>				
10A	Coupling 4P D:18	KL10AAG	<b>4P -&gt; 125/03</b>				
11	Valves and Plugs	KL34AAA					
14	Reversing flap	KL52AAC	<b>All Versions, DN 65</b>				

### Single Unit

1	Pump body	151351250	151351250	151351250	151351250	151351250	151351260	151351260	151351260	151351260	151351260
3	Seal-housing disc	160150221	160150221	160150221	150150051	150150051	150150071	150150071	150150091	150150091	150150091
4	Adaptor 2P	161453131	161453131	161453141	161453141	161453141	161452881	161452881	161452841	161452841	161452841
	Adaptor 4P		161453141	161453151	161453151	161453151		161452881		161452841	161452841
5	Wear ring	168601511	168601511	168601511	168601511	168601511	168601511	168601511	168601511	168601511	168601511
6	Back wear ring				465020201	465020201	465020201	465020201	465020201	465020201	465020201
9**	Motor 1 ~, 2P	13282R00F									
	Motor 3 ~, 2P	130647082	130647063	130647105	130647137	130647143	130647253	130647263	130647304	130647314	130647324
	Motor 3 ~, 4P			13275R00J	13279R00J	130647601		130647610		130647661	130647671
9A**	Motor 3 ~, 4P		13262R00L								

Seal housing disc - disc + back wear ring

FCT Imp. Dia = FC Imp. Dia.

\* Recommended spare parts - Parti di ricambio consigliate

\* Pièces détachées conseillées - Empfohlene Ersatzteile

\*\* Motor spare parts: see motor lists - Parti di ricambio motore: vedi liste motore

\*\* Pièces détachées Moteur : voir listes moteur - Motor-Ersatzteile: gem. Motorlisten

FCTE40-100\_5\_May05\_EdD

## FCTE 80 - FCTE4 80

	80-125/30	80-125/40	80-125/55	80-160/75	80-200/110	80-200/150	80-200/185	80-200/220		
ELP. 3~, 2P, 50	102180390	102180400	102180410	102180420	102180430	102180440	102180450	102180460		
kw ->	3,0	4,0	5,5	7,5	11,0	15,0	18,5	22,0		
			80-125/07	80-125/11	80-200/15		80-200/22	80-200/30	80-250/40	80-250/55
ELP. 3~, 4P, 50			107470760	102225420	102245480		102245490	102245500	102245520	102245530
kw ->			0,75	1,1	1,5		2,2	3,0	4,0	5,5

### Kit

2*	Impeller 2P	KL04AC8	KL04AB2	KL04AB3	KL04AB4	KL04AB6	KL04AB8	KL04AB9	KL04ACA		
	Impeller 4P			KL04AB3	KL04AB4	KL04ALE		KL04AB9	KL04ACA	KL04ALA	KL04ALB

7*	Material -->	<b>VBEGG</b>	<b>Q1Q1EGG</b>	<b>VBVGG</b>	<b>Q1Q1VGG</b>	2P-> 160/75	STD -> Seal VBEGG - OR EPDM
	Seal D22 Kit	KL01AAS	KL01ABZ	KL01AB2	KL01AB5	4P-> 125/11	
Material -->	<b>VBEGG</b>	<b>Q1Q1EGG</b>	<b>VBVGG</b>	<b>Q1Q1VGG</b>	4P-> 250/55		
Seal D28 Kit	KL01AAV	KL01AB0	KL01AB3	KL01AB6	4P-> 250/55		
8*	OR EPDM Kit	KL02AAH	All Versions incl. 3 Dia - OR				
	OR FPM Kit	KL02AAK	All Versions incl. 3 Dia - OR.				
10	Imp.lock kit M12	KL39AAA	2P-> 160/75; 4P-> 125/11				
	Imp.lock kit M16	KL39AAB	2P-> 200/220; 4P-> 250/55				
11	Valves and Plugs	KL34AAA					
14	Reversing flap	KL52AAD	All Versions, DN80				

### Single Unit, 2P

1	Pump body	151351270	151351270	151351270	151351270	151351280	151351280	151351280	151351280		
3	Seal-housing disc	160150221	160150221	160150221	160150221	150150081	150150081	150150081	150150081		
4	Adaptor	161453131	161453141	161453141	161453141	161452881	161452841	161452841	161452841		
5	Wear ring	168601521	168601521	168601521	168601521	168601580	168601580	168601580	168601580		
6	Back wear ring					168601270	168601270	168601270	168601270		
9**	Motor 3 ~, 2 P	130647063	130647105	130647137	130647143	130647264	130647303	130647313	130647323		

### Single Unit, 4P

1	Pump body			151351270	151351270	151351280		151351280	151351280	151351280	151351280
3	Seal-housing disc			160150221	160150221	150150081		150150081	150150081	150150081	150150081
4	Adaptor			161453151	161453151	161452881		161452841	161452841	161452841	161452881
5	Wear ring			168601521	168601521	168601580		168601580	168601580	168601580	168601580
6	Back wear ring					168601270		168601270	168601270	168601270	168601270
9**	Motor 3 ~, 4P			13279R00J	130647601	130647611		130647661	130647671	130647701	130647763

Seal housing disc - disc + back wear ring

FCT Imp. Dia = FC Imp. Dia.

\* Recommended spare parts - Parti di ricambio consigliate

\* Pièces détachées conseillées - Empfohlene Ersatzteile

\*\* Motor spare parts: see motor lists - Parti di ricambio motore: vedi liste motore

\*\* Pièces détachées Moteur : voir listes moteur - Motor-Ersatzteile: gem. Motorlisten

## FCTE 100 - FCTE4 100

	<b>100-160/110</b>	<b>100-200/185</b>	<b>100-200/220</b>			
ELP 3 ~, 2P, 50	102180470	102180480	102180490			
kW ->	<b>11,0</b>	<b>18,5</b>	<b>22,0</b>			
	<b>100-160/15</b>	<b>100-200/22</b>	<b>100-200/30</b>	<b>100-250/40</b>	<b>100-250/55</b>	<b>100-250/75</b>
ELP 3 ~, 4P, 50	102180890	102180900	102180910	102180920	102180930	102180940
kW ->	<b>1,5</b>	<b>2,2</b>	<b>3,0</b>	<b>4,0</b>	<b>5,5</b>	<b>7,5</b>

### Kit

2*	Impeller, 2P		KL04AK6	KL04AK1	KL04AK2			
	Impeller, 4P	KL04AK0		KL04AK1	KL04AK2	KL04AK4	KL04AK5	KL04ALD

7*	Material -->	<b>VBEGG</b>	<b>Q1Q1EGG</b>	<b>VBVGG</b>	<b>Q1Q1VGG</b>	2P->200/220	STD -> Seal VBEGG - OR EPDM
	Seal D28 kit	KL01AAV	KL01AB0	KL01AB3	KL01AB6	4P->250/40	
	Material -->	<b>VBEGG</b>	<b>Q1Q1EGG</b>	<b>VBVGG</b>	<b>Q1Q1VGG</b>		
	Seal D33 kit	KL01ABV	KL01AB1	KL01AB4	KL01AB7	4P->250/75	
8*	OR EPDM Kit	KL02AAH	<b>All Versions incl. 3 Dia - OR</b>				
	OR FPM Kit	KL02AAK	<b>All Versions incl. 3 Dia - OR</b>				
10	Imp. lock Kit M16	KL39AAB	<b>2P; 4P-&gt;250/40</b>				
	Imp. lock Kit M20	KL39AAC	<b>4P-&gt;250/75</b>				
11	Valves and plugs	KL34AAA					
14	Reversing flap	KL52AAE	<b>All Versions, DN 100</b>				

### Single Unit

1	Pump body		151351290	151351300	151351300		
		151351290		151351300	151351300	151351300	151351300
3	Seal-housing disc		150150061	150150081	150150081		
		150150061		150150081	150150081	150150101	150150101
4	Adaptor 2P		161453151	161452841	161452841		
		161453151		161452841	161452841	161452881	161452881
5	Wear ring		168601270	168601270	168601270		
		168601270		168601270	168601270	168601270	168601270
6	Back wear ring		168601270	168601270	168601270		
		168601270		168601270	168601270	168601270	168601270
9**	Motor 3 ~, 2P		130647264	130647313	130647323		
		130647611		130647661	130647671	130647701	130647773
	Motor 3 ~, 4P						

Seal housing disc - disc + back wear ring

FCT Imp. Dia = FC Imp. Dia.

\* Recommended spare parts - Parti di ricambio consigliate

\* Pièces détachées conseillées - Empfohlene Ersatzteile

\*\* Motor spare parts: see motor lists - Parti di ricambio motore: vedi liste motore

\*\* Pièces détachées Moteur : voir listes moteur - Motor-Ersatzteile: gem. Motorlisten

FCTE40-100\_5\_May05\_EdD

xylem

