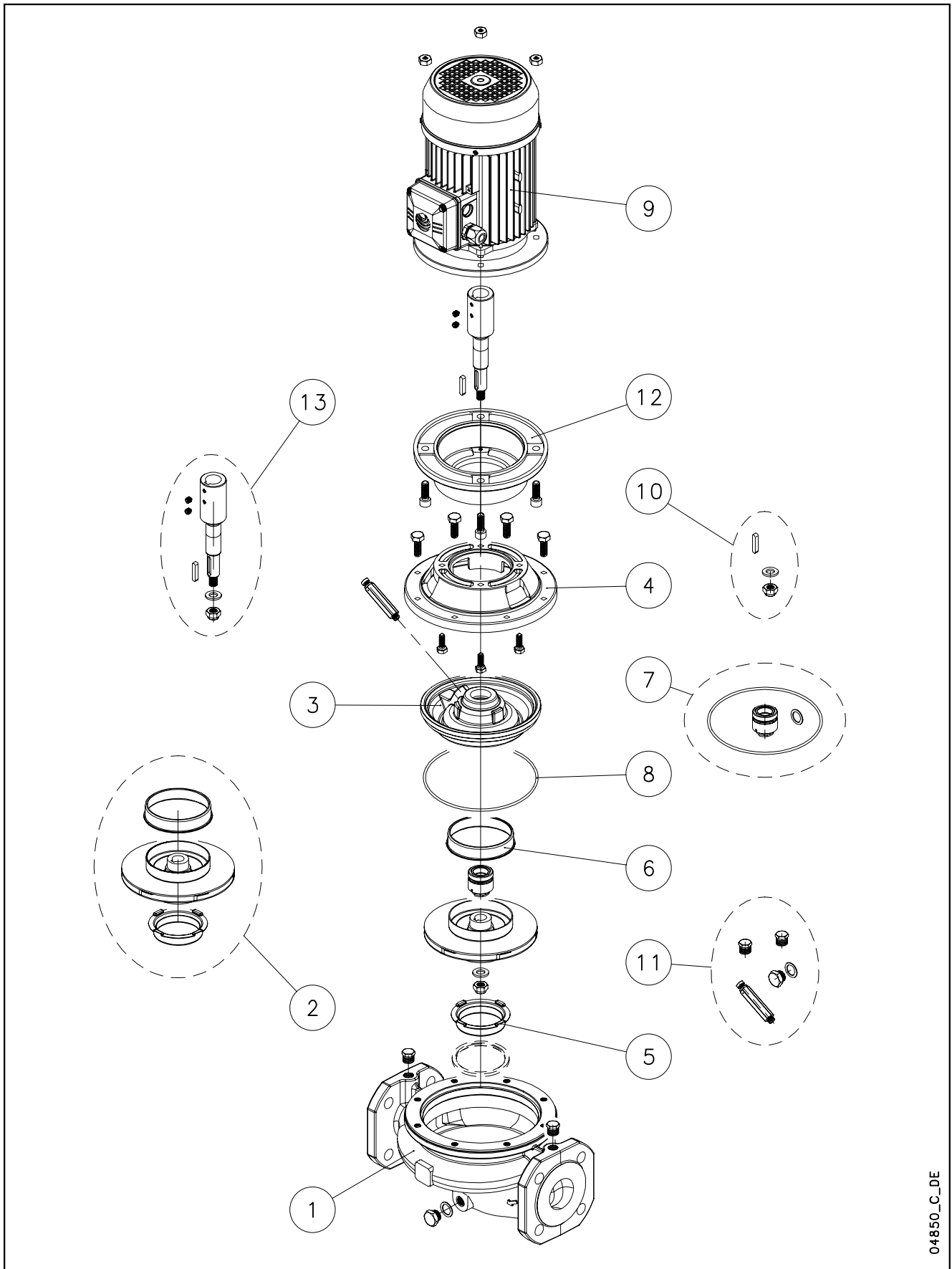


FCS-FCS4 / LHS-LHS4 / GFCS-GFCS4 / LR-LR_4



04850_C_DE

Lowara, Flygt and Vogel Pumpen are a trademark of Xylem Inc. or one of its subsidiaries. Goulds is a registered trademark of Goulds Pumps, Inc. and is used under license.

N.	Descrizione it	Description en	Description fr	Beschreibung de	Descripción es	Descrição pt
1	Corpo pompa completo	Complete pump body	Corps de pompe complete	Kompletter pumpengehäuse	Caja bomba completa	Corpo da bomba complete
2	Girante e anelli di usura	Impeller and wear rings	Roue et anneaux d'usure	Laufrad und Verschleißbringe	Rodete y anillos de desgaste	Impulsor e anéis compensadores de desgaste
3	Disco portatenuta (con anello di usura)	Seal housing disc (with wear ring)	Disque d'étanchéité (avec anneau d'usure)	Dichtungsscheibe (mit Ausgleichsring)	Disco de alojamiento retén (con anillo de desgaste)	Disco porta-vedante (com anel compensador de desgaste)
4	Lanterna	Adaptor	Lanterne	Antriebslaterne	Adaptador	Adaptador
5	Rasamento anteriore	Front wear plate	Bague pour régulation du jeu axial avant	Vordere Ausgleichsscheibe	Espesor delantero	Casquilho anterior
6	Rasamento posteriore	Back wear plate	Bague pour régulation du jeu axial arrière	Hintere Ausgleichsscheibe	Espesor trasero	Casquilho posterior
7	Tenuta meccanica e guarnizione OR	Mechanical seal and O-Ring	Garniture mécanique et joint torique	Gleitringdichtung und O-Ring	Retén mecánico y aro tórico	Vedante mecânico e vedação OR
8	Guarnizione OR	O-Ring	Joint torique	O-Ring	Aro tórico	Vedação OR
9	Motore completo	Complete motor	Moteur complet	Kompletter Motor	Motor completo	Motor complete
10	Gruppo fissaggio girante (dado, rosetta e linguetta)	Impeller locking group (nut, washer and key)	Groupe de fixation roue (ecrou, rondelle et clavette)	Befestigungsgruppe Laufrads auf (Feststellmutter, Unterlegscheibe und Passfeder)	Grupo de fijación rodete (tuerca, arandela y lengüeta)	Grupo de fixação do impulsor (porca, anilha e lingueta)
11	Valvola e tappi	Valve and plugs	Vanne et bouchons	Ventil und Stutzen	Válvula y tapones	Válvula e tampões
12	Raccordo motore	Motor connector	Raccord moteur	Motoranschluss	Acoplamiento motor	Conexão motor
13	Giunto con gruppo fissaggio girante	Coupling with impeller locking group	Manchon avec groupe de fixation roue	Kupplung mit Befestigungsgruppe Laufrad	Junta con grupo de fijación rodete	Junta com grupo de fixação do impulsor
N.	Beschrijving nl	Περιγραφή el	Açıklama tr	Kuvaus fi	Описание ru	Opis pl
1	Compleet pomphuis	Πλήρες σώμα αντλίας	Komple pompa gövdesi	Täydellinen pumpun runko	Полный корпус насоса	Kompletny korpus pompy
2	Waaier en slijtringen	Πτερόγιο και δακτύλιοι τριβής	Pompa rotoru ve aşınma halkaları	Juoksupyörä ja kulumisrenkaat	Рабочее колесо и изнашиваемые кольца	Wirnik i pierścienie wymienne
3	Dichtingssteunplaat (met slijtring)	Δίσκος μηχανικού στυπιοθλίπτη και δακτύλιος τριβής	Sızdırmazlık diskisi (aşınma halkası ile)	Tiivisteenn kannatuslevy (kulumisrenkaalla)	Диск держателя прокладки (с изнашиваемым кольцом)	Tarcza uszczelki (z wymiennym pierścieniem)
4	Lantaarnstuk	Μπρακέτο	Adaptör	Sovitin	Адаптер	Lampa
5	Voorste schraapring	Πρόσθιος δακτύλιος τριβής	Ön ara halkası	Etuvalilevy	Передняя утолщающая прокладка	Wyglądanie przednie
6	Achterste schraapring	Οπίσθιος δακτύλιος τριβής	Arka ara halkası	Takavälilevy	Задняя утолщающая прокладка	Wyglądanie tylne
7	Mechanische asafdichting en O-ringafdichting	Μηχανικός στυπιοθλίπτης και ροδέλες στεγανοποίησης	Mekanik conta ve O-Ring	Mekaaninen tiiviste ja O-rengas	Механическая прокладка и уплотнение OR	Uszczelnienie mechaniczne i uszczelka O-Ring
8	O-ringafdichting	Ροδέλα στεγανοποίησης	O-Ring	O-rengas	Прокладка OR	Uszczelka O-Ring
9	Complete motor	Πλήρης κινητήρας	Komple motor	Täydellinen moottori	Укомплектованный двигатель	Kompletny silnik
10	Waaierbevestigingsblok (moer, ring en spie)	Σετ ασφάλισης πτερυγίου (παξιμάδι, ροδέλα, σφήνα)	Pompa rotorunu sabitleme takımı (somun, rondela ve kama)	Juoksupyörän kiinnityskokonaisuus (mutteri, välirengas ja kiila)	Узел фиксации рабочего колеса (гайка, шайба и шпонка)	Zespół mocujący wirnika (nakrętka, podkładka i wpust)
11	Klep en doppen	Βαλβίδα εξαέρωσης και τάπες	Valf ve tapalar	Venttiili ja tulpat	Клапан и заглушки	Zawór i nakrętki
12	Motorverbinding	Έδρανο	Motor bağlantı elemanı	Moottoriiliitos	Патрубок двигателя	Złącza silnika
13	Koppeling met waaierbevestigingsblok	Προέκταση άξονα και σετ ασφάλισης πτερυγίου	Pompa rotorunu sabitleme takımı ile mafsal	Liitos juoksupyörän kiinnityskokonaisuudella	Соединение с узлом фиксации рабочего колеса	Złącze z zespołem mocującym wirnika

FCSM 40 - FCS 40 - FCS4 40

FCSM				40-160/22/P					
ELP 1 ~,2P, 50				101202130					
FCS	40-125/07/C	40-125/11/C	40-160/15/C	40-160/22/C	40-200/30/P	40-200/40/P	40-200/55/P	40-250/75/P	40-250/110/P
ELP 3 ~,2P, 50	104390300	104390310	104390320	104390330	101200760	101200770	101200780	101200800	101200810
	40-125/07/D	40-125/11/D	40-160/15/D	40-160/22/C	40-200/30/P	40-200/40/P	40-200/55/P	40-250/75/P	40-250/110/P
	104562300	104562310	104562310	104390330	101200760	101200770	101200780	101200800	101200810
kW ->	0,75	1,1	1,5	2,2	3,0	4,0	5,5	7,5	11,0
FCS4						40-200/05/A	40-200/07/C	40-250/11/P	40-250/15/P
ELP 3 ~,4P, 50						107481010	104392980	101205800	101205810
kW ->						0,55	0,75	1,1	1,5
Pump construction ->	FCS/D: motors IE3 fitted			FCS/C, /P: motors IE2 fitted			FCS/A: motors IE1 fitted		

Kit	Dia. - Ø	119	136	150	164	188	205	222	242	256
2*	Impeller 2P	KL04AA9	KL04ABA	KL04ABB	KL04ABC	KL04ABD	KL04ABE	KL04ACK	KL04ACL	KL04ACM
	Impeller 4P						KL04ABE	KL04ACK	KL04ACL	KL04ACM

7*	Materials ->	Q1BEGG	Q1Q1EGG	Q1BVGG	Q1Q1VGG	Std -> Seal Q1BEGG - OR EPDM				
	Seal D22 kit	KL01ACD	KL01ABZ	KL01ACG	KL01AB5					
8*	OR Kit EPDM	KL02AAH	All Versions incl. 3 Dia - OR .							
	OR Kit FPM	KL02AAK	All Versions incl. 3 Dia - OR .							
10	Imp. lock kit M12	KL39AAA								
11	Valves and Plugs	KL34AAA								
13	Coupling D:18	KL10AAH	2P->125/11		4P->200/07					
		KL10AAK	2P->160/22		4P->250/15					
		KL10AAL	2P->200/40							
		KL10AAM	2P->250/75							
		KL10AAN	2P->250/110							

Single Unit

1	Pump body	151350220	151350220	151350220	151350220	151350240	151350240	151350240	151350240	151350240
3	Seal-housing disc	160150201	160150201	150150041	150150041	150150071	150150071	150150071	150150071	150150071
4	Adaptor	161430511	161430511	161430511	161430511	161452881	161452881	161452881	161452881	161452881
5	Wear ring	168601491	168601491	168601491	168601491	168601491	168601491	168601491	168601491	168601491
6	Back wear ring			465020201	465020201	465020201	465020201	465020201	465020201	465020201
9**	Motor 1-, 2P				50004HB00					
	Motor 3-, 2P, IE2 >	107230520	107230530	50000RB00	50001RB00	50002RE00	50008VE00	50013VE00	50017VB00	50019VE00
	Motor 3-, 2P, IE3 >	107234030	107234080	107234090	50001RB00	50002RE00	50008VE00	50013VE00	50017VB00	50019VE00
	Motor 3-, 4P						107230740	107241510	50005RB00	50006RB00
12	Mot/connector	167350110	167350110	167350110	167350110	167350160	167350160	167350130	167350130	167350140

* Recommended spare parts - Parti di ricambio consigliate

* Pièces détachées conseillées - Empfohlene Ersatzteile

** Motor spare parts: see motor lists - Parti di ricambio motore: vedi liste motore

** Pièces détachées Moteur : voir listes moteur - Motor-Ersatzteile: gem. Motorlisten

FCS_40-100_5_June11_EdC

FCS 50 - FCS4 50

FCS	50-125/11/C	50-125/15/C	50-160/22/C	50-160/30/P	50-160/40/P	50-200/55/P	50-200/75/P	50-250/110A/P	50-250/110/P	50-250/150/P
ELP 3 ~,2P, 50	104390360	104390370	104390380	101200880	101200890	101200910	101200920	101200930	101200940	101200950
	50-125/11/D	50-125/15/D	50-160/22/C	50-160/30/P	50-160/40/P	50-200/55/P	50-200/75/P	50-250/110A/P	50-250/110/P	50-250/150/P
	104562390	104562400	104390380	101200880	101200890	101200910	101200920	101200930	101200940	101200950
kW ->	1,1	1,5	2,2	3	4	5,5	7,5	11	11	15
FCS4						50-200/07/C	50-200/11/P		50-250/15/P	50-250/22/P
ELP 3 ~,4P, 50						104393000	101205910		101205940	101205950
kW ->						0,75	1,1		1,5	2,2
Pump construction ->	FCS/D: motors IE3 fitted			FCS/C, /P: motors IE2 fitted			FCS/A: motors IE1 fitted			

Kit	Dia. - Ø	112	126	143	159	171	190	209	218	233	251
2*	Impeller 2P	KL04ABF	KL04ABG	KL04ABH	KL04ABK	KL04ABL	KL04ABM	KL04ABN	KL04ABP	KL04ABQ	KL04ABR
	Impeller 4P						KL04ABM	KL04ABN		KL04ABQ	KL04ABR

7*	Material ->	Q1BEGG	Q1Q1EGG	Q1BVGG	Q1Q1VGG	2P-> 250/110	
	Seal D22 kit	KL01ACD	KL01ABZ	KL01ACG	KL01AB5	4P-> 250/15	
	Material ->	Q1BEGG	Q1Q1EGG	Q1VGG	Q1Q1VGG	2P, 250/150	
	Seal D28 kit	KL01ACE	KL01AB0	KL01ACH	KL01AB6	4P, 250/22	Std -> Seal Q1BEGG - OR EPDM
8*	OR Kit EPDM	KL02AAH	All Versions incl. 3 Dia - OR .				
	OR Kit FPM	KL02AAK	All Versions incl. 3 Dia - OR .				
10	Imp. lock kit M12	KL39AAA	2P->250/110		4P->250/15		
	Imp. lock kit M16	KL39AAB	2P, 250/150		4P, 250/22		
11	Valves and Plugs	KL34AAA					
13	Coupling D:18	KL10AAH	2P->125/11		4P->200/07		
		KL10AAK	2P->160/22		4P->250/15		
		KL10AAL	2P->160/40				
		KL10AAM	2P->200/75				
		KL10AAN	2P->250/110				
Coupling D:24	KL10AAQ			4P, 250/22			
	KL10AAS	2P, 250/150					

Single Unit

1	Pump body	151350260	151350260	151350260	151350260	151350280	151350280	151350280	151350280	151350280	151350280
3	Seal-housing disc	160150201	160150201	160150201	150150041	150150041	150150071	150150071	150150071	150150071	150150091
4	Adaptor 2P	161430511	161430511	161430511	161430521	161430521	161452881	161452881	161452881	161452881	161452881
	Adaptor 4P						161452881	161452881		161452881	161452881
5	Wear ring	168601500	168601500	168601500	168601500	168601500	168601500	168601500	168601511	168601511	168601511
6	Back wear ring				465020201	465020201	465020201	465020201	465020201	465020201	465020201
9**	Motor 3~, 2P, IE2 >	107230530	50000RB00	50001RB00	50002RE00	50008VE00	50013VE00	50017VB00	50019VE00	50019VE00	50024VB00
	Motor 3~, 2P, IE3 >	107234080	107234090	50001RB00	50002RE00	50008VE00	50013VE00	50017VB00	50019VE00	50019VE00	50024VB00
	Motor 3~, 4P						107241510	50005RB00		50006RB00	50010RB00
12	Mot/connector 2P	167350110	167350110	167350110	167350120	167350120	167350130	167350130	167350140	167350140	167350140
	Mot/connector 4P						167350150	167350150		167350150	167350160

* Recommended spare parts - Parti di ricambio consigliate

* Pièces détachées conseillées - Empfohlene Ersatzteile

** Motor spare parts: see motor lists - Parti di ricambio motore: vedi liste motore

** Pièces détachées Moteur : voir listes moteur - Motor-Ersatzteile: gem. Motorlisten

FCS_40-100_5_June11_EdC

FCS 65 - FCS4 65

FCS	65-125/22/C	65-125/30/P	65-125/40/P	65-160/55/P	65-160/75/P	65-200/110A/P	65-200/110/P	65-250/150/P	65-250/185/P	65-250/220/P
ELP 3 ~, 2P, 50 kW ->	104390400	101200990	101201000	101201010	101201020	101201030	101201040	101201050	101201060	101201070
	2,2	3,0	4,0	5,5	7,5	11,0	11,0	15,0	18,5	22,0
FCS4				65-160/07/C	65-160/11/P		65-200/15/P		65-250/22/P	65-250/30/P
ELP 3 ~, 4P, 50 kW ->				104393020	101206020		101206040		101206060	101206070
				0,75	1,1		1,5		2,2	3,0
Pump construction	FCS/D: motors IE3 fitted			FCS/C, /P: motors IE2 fitted			FCS/A: motors IE1 fitted			

Kit	Dia. - Ø	119	130	139	158	174	197	209	224	237	250
2*	Impeller 2P	KL04ABS	KL04ABT	KL04ABU	KL04ABV	KL04ABW	KL04ABX	KL04ABY	KL04ABZ	KL04AB0	KL04AB1
	Impeller 4P				KL04ABV	KL04ABW		KL04ABY		KL04AB0	KL04AB1

7*	Materials ->	Q1BEGG	Q1Q1EGG	Q1BVG	Q1Q1VGG	2P-> 200/110		Std -> Seal Q1BEGG - OR EPDM			
	Seal D22 kit	KL01ACD	KL01ABZ	KL01ACG	KL01AB5	4P-> 200/15					
	Materials ->	Q1BEGG	Q1Q1EGG	Q1BVG	Q1Q1VGG	2P-> 250/220					
	Seal D28 kit	KL01ACE	KL01AB0	KL01ACH	KL01AB6	4P->250/30					
8*	OR Kit EPDM	KL02AAH	All Versions incl. 3 Dia - OR .								
	OR Kit FPM	KL02AAK	All Versions incl. 3 Dia - OR .								
10	Imp. lock kit M12	KL39AAA	2P->200/110			4P->200/15					
	Imp. lock kit M16	KL39AAB	2P, 250			4P, 250					
11	Valves and Plugs	KL34AAA									
13	Coupling D:18	KL10AAH				4P, 160/07					
		KL10AAK	2P, 125/22			4P->200/15					
		KL10AAL	2P->125/40								
		KL10AAM	2P->160/75								
		KL10AAN	2P->200/110								
Coupling D:24	KL10AAQ				4P->250/30						
	KL10AAS	2P->250/185									
	KL10AAT	2P,250/220									

Single Unit

1	Pump body	151350300	151350300	151350300	151350300	151350300	151350320	151350320	151350320	151350320	151350320
3	Seal-housing disc	160150221	160150221	160150221	150150051	150150051	150150071	150150071	150150091	150150091	150150091
4	Adaptor	161453151	161453151	161453151	161453151	161453151	161452881	161452881	161452881	161452881	161452881
5	Wear ring	168601511	168601511	168601511	168601511	168601511	168601511	168601511	168601511	168601511	168601511
6	Back wear ring				168601511	168601511		168601511		168601511	168601511
					465020201	465020201	465020201	465020201	465020201	465020201	465020201
9**	Motor 3~, 2P	50001RB00	50002RE00	50008VE00	50013VE00	50017VB00	50019VE00	50019VE00	50024VB00	50025VB00	50026VE00
	Motor 3~, 4P				107241510	50005RB00		50006RB00		50010RB00	50011RB00
12	Mot/connector 2P	167350150	167350160	167350160	167350130	167350130	167350140	167350140	167350140	167350140	167350140
	Mot/connector 4P				167350150	167350150		167350150		167350160	167350160

* Recommended spare parts - Parti di ricambio consigliate

* Pièces détachées conseillées - Empfohlene Ersatzteile

** Motor spare parts: see motor lists - Parti di ricambio motore: vedi liste motore

** Pièces détachées Moteur : voir listes moteur - Motor-Ersatzteile: gem. Motorlisten

FCS_40-100_5_June11_EdC

FCS 80 - FCS4 80

FCS	80-125/30/P	80-125/40/P	80-125/55/P	80-160/75/P		80-200/110/P	80-200/150/P	80-200/185/P	80-200/220/P
ELP 3 ~, 2P, 50 kW ->	101201100	101201110	101201120	101201140		101201180	101201190	101201200	101201210
	3.0	4.0	5.5	7.5		11.0	15.0	18.5	22.0
FCS4			80-125/07/C	80-125/11/P	80-200/15/P			80-200/22/P	80-200/30/P
ELP 3 ~, 4P, 50 kW ->			104393040	101206120	101206180			101206190	101206200
			0.75	1.1	1.5			2.2	3.0
	80-250/40/P	80-250/55/P	Pump construction ->						
	101206220	101206230	FCS/D : motors IE3 fitted						
			FCS/C, /P: motors IE2 fitted						
			FCS/A : motors IE1 fitted						
	4.0	5.5							

Kit	Dia. - Ø	113	121	129	140	177	168	187	198	210
2*		241	258							
	Impeller 2P	KL04AC8	KL04AB2	KL04AB3	KL04AB4		KL04AB6	KL04AB8	KL04AB9	KL04ACA
	Impeller 4P			KL04AB3	KL04AB4	KL04ALE			KL04AB9	KL04ACA
		KL04ALA	KL04ALB							

7*	Material -->	Q1BEGG	Q1Q1EGG	Q1BVGG	Q1Q1VGG	2P->160/75				
	Seal D22 kit	KL01ACD	KL01ABZ	KL01ACG	KL01AB5	4P->125/15				
	Material -->	Q1BEGG	Q1Q1EGG	Q1BVGG	Q1Q1VGG	2P->200/220				
	Seal D28 kit	KL01ACE	KL01AB0	KL01ACH	KL01AB6	4P->250/55	Std ->Seal Q1BEGG - OR EPDM			
8*	OR EPDM kit	KL02AAH	All Versions incl. 3 Dia - OR .							
	OR FPM Kit	KL02AAK	All Versions incl. 3 Dia - OR .							
10	Imp.lock kit M12	KL39AAA	2P->160/75; 4P->125/15							
	Imp.lock kit M16	KL39AAB	2P->250/220; 4P->250/55							
11	Valves and Plugs	KL34AAA								
13	Coupling D:18	KL10AAH				4P,125/07				
		KL10AAK				4P,125/11				
		KL10AAL	2P->125/40							
		KL10AAM	2P->125/75							
	Coupling D:24	KL10AAP				4P,200/11				
		KL10AAQ				4P->250/40				
		KL10AAR				4P, 250/55				
		KL10AAS	2P->200/185							
		KL10AAT	2P->200/220							

Single Unit, 2P

1	Pump body	151350340	151350340	151350340	151350340		151350360	151350360	151350360	151350360
3	Seal-housing disc	160150221	160150221	160150221	160150221		150150081	150150081	150150081	150150081
4	Adaptor	161453141	161453151	161453151	161453151		161452881	161452881	161452881	161452881
5	Wear ring	168601521	168601521	168601521	168601521		168601580	168601580	168601580	168601580
6	Back wear ring						168601270	168601270	168601270	168601270
9**	Motor 3~, 2P	50002RE00	50008VE00	50013VE00	50017VB00		50019VE00	50024VB00	50025VB00	50026VE00
12	Mot/Connector	167350120	167350160	167350130	167350130		167350140	167350140	167350140	167350140

Single Unit, 4P

1	Pump body			151350340	151350340	151350360			151350360	151350360
		151350360	151350360							
3	Seal-housing disc			160150221	160150221	150150081			150150081	150150081
		150150081	150150081							
4	Adaptor			161453151	161453151	161452881			161452881	161452881
		161452881	161452881							
5	Wear ring			168601521	168601521	168601580			168601580	168601580
		168601580	168601580							
6	Back wear ring								168601270	168601270
		168601270	168601270							
9**	Motor 3~, 4P			107241510	50005RB00	50006RB00			50010RB00	50011RB00
		50015VB00	50020VB00							
12	Mot/Connector			167350150	167350150	167350150			167350160	167350160
		167350160	167350130							

* Recommended spare parts - Parti di ricambio consigliate

* Pièces détachées conseillées - Empfohlene Ersatzteile

** Motor spare parts: see motor lists - Parti di ricambio motore: vedi liste motore

** Pièces détachées Moteur : voir listes moteur - Motor-Ersatzteile: gem. Motorlisten

FCS_40-100_5_June11_EdC

FCS 100 - FCS4 100

FCS	100-160/110/P	100-200/185/P	100-200/220/P			
ELP 3 ~, 2P	101201260	101201300	101201310			
kW ->	11.0	18.5	22.0			
FCS4	100-160/15/P	100-200/22/P	100-200/30/P	100-250/40/P	100-250/55/P	100-250/75/P
ELP 3 ~, 4P	101206260	101206280	101206290	101206320	101206330	101206340
kW ->	1.50	2.20	3.0	4.0	5.50	7.50
Pump construction ->	FCS/D: motors IE3 fitted		FCS/C, /P: motors IE2 fitted		FCS/A: motors IE1 fitted	

Kit	Dia. - Ø	152	160	173	189	217	238	256
2*	Impeller 2P	KL04AK6		KL04AK1	KL04AK2			
	Impeller 4P		KL04AK0	KL04AK1	KL04AK2	KL04AK4	KL04AK5	KL04ALD

7*	Material-->	Q1BEGG	Q1Q1EGG	Q1BVGG	Q1Q1VGG	2P -> 200/220	
	Seal D28 kit	KL01ACE	KL01ABZ	KL01ACH	KL01AB6	4P -> 250/40	
	Material-->	Q1BEGG	Q1Q1VGG	Q1BVGG	Q1Q1VGG		
	Seal D33 kit	KL01ACF	KL01AB1	KL01ACK	KL01AB7	4P-> 250/75	Std ->Seal Q1BEGG - OR EPDM
8*	OR Kit EPR	KL02AAH	Incl. 3 Dia - OR .				
	OR Kit FPM	KL02AAK	Incl. 3 Dia - OR .				
10	Imp. lock kit M16	KL39AAB	2P->200/220			4P->250/40	
	Imp. lock kit M20	KL39AAC				4P->250/75	
11	Valves and Plugs	KL34AAA					
13	Coupling D:24	KL10AAP				4P, 160/15	
		KL10AAQ				4P->250/40	
		KL10AAS	2P->200/185				
		KL10AAT	2P, 200/220				
	Coupling D:29	KL10AAV				4P->250/75	

Single Unit

1	Pump body	151350380		151350400	151350400		
			151350380	151350400	151350400	151350400	151350400
3	Seal-housing disc	150150061		150150081	150150081		
			150150061	150150081	150150081	150150081	150150101
4	Adaptor	161453151		161452881	161452881		
			161453151	161452881	161452881	161452881	161452881
5	Wear ring	168601270		168601270	168601270		
			168601270	168601270	168601270	168601270	168601270
6	Back wear ring	168601270		168601270	168601270		
			168601270	168601270	168601270	168601270	168601270
9**	Motor 3~, 2P	50019VE00		50025VB00	50026VE00		
	Motor 3~, 4P		50006RB00	50010RB00	50011RB00	50015VB00	50020VB00
12	Mot/connector 2P	167350140		167350140	167350140		
	Mot/connector 4P		167350150	167350160	167350160	167350160	167350130

* Recommended spare parts - Parti di ricambio consigliate

* Pièces détachées conseillées - Empfohlene Ersatzteile

** Motor spare parts: see motor lists - Parti di ricambio motore: vedi liste motore

** Pièces détachées Moteur : voir listes moteur - Motor-Ersatzteile: gem. Motorlisten

FCS_40-100_5_June11_EdC



FCBS/P, Impeller (Item 2) - Motor (Item 9) Part Number

80	80-200/110/P	80-200/150/P	80-200/185/P	80-200/220/P			
	101445100	101445110	101445120	101445130			
	11 kW	15 kW	18,5 kW	22 kW			
	2-> 160720510	160720520	160720530	160720540			
	9-> 50019VE00	50024VB00	50025VB00	50026VE00			
	480-200/15/P			480-200/22/P	480-200/30/P	480-250/40/P	480-250/55/P
	101446200			101446210	101446220	101446230	101446240
	1,5 kW			2,2 kW	3,0 Kw	4,0 kW	5,5 kW
	2-> 160720500			160720530	160720540	160720590	160720600
9-> 50006RB00			50010RB00	50011RB00	50015VB00	50020VB00	
100	100-160/110/P	100-200/185/P	100-200/220/P				
	101445140	101445150	101445160				
	11 kW	18.5 kW	22 kW				
	2-> 160720680	160720720	160720780				
	9-> 50019VE00	50025VB00	50026VE00				
	4100-160/15/P	4100-200/22/P	4100-200/30/P	4100-250/40/P	4100-250/55/P	4100-250/75/P	
	101446250	101446260	101446270	101446280	101446290	101446300	
	1,5 kW	2,2 kW	3 kW	4 kW	5,5 kW	7,5 kW	
	2-> 160720700	160720720	160720780	160720850	160720900	160720910	
9-> 50006RB00	50010RB00	50011RB00	50015VB00	50020VB00	50021VB00		

FCBS_40-100_5_June11_EdC

xylem