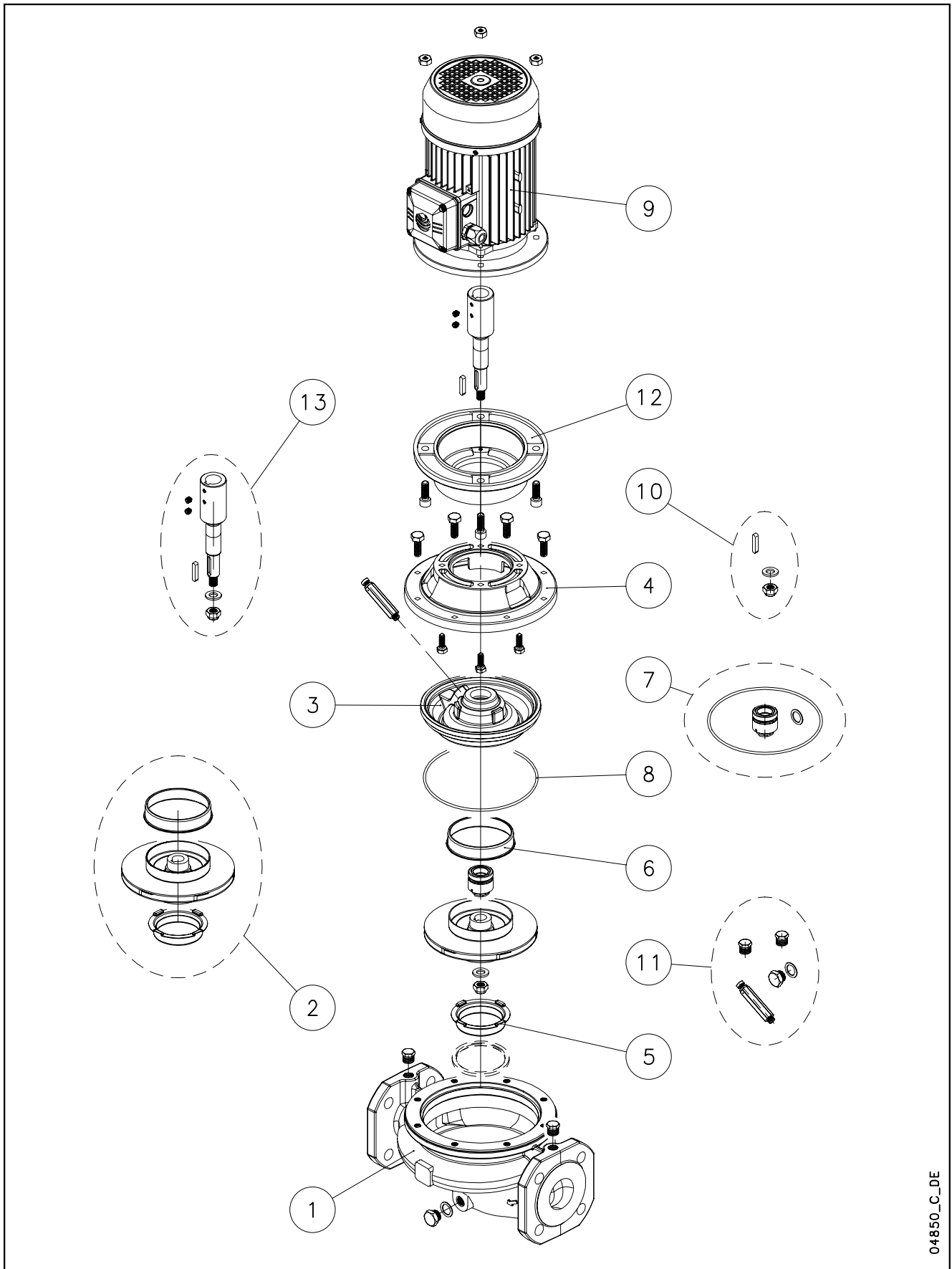


## FCS-FCS4 / LHS-LHS4 / GFCS-GFCS4 / LR-LR\_4



04850\_C\_DE

Lowara, Flygt and Vogel Pumpen are a trademark of Xylem Inc. or one of its subsidiaries. Goulds is a registered trademark of Goulds Pumps, Inc. and is used under license.

N.	Descrizione it	Description en	Description fr	Beschreibung de	Descripción es	Descrição pt
1	Corpo pompa completo	Complete pump body	Corps de pompe complete	Kompletter pumpengehäuse	Caja bomba completa	Corpo da bomba complete
2	Girante e anelli di usura	Impeller and wear rings	Roue et anneaux d'usure	Lauftrad und Verschleißbringe	Rodete y anillos de desgaste	Impulsor e anéis compensadores de desgaste
3	Disco portatenuta (con anello di usura)	Seal housing disc (with wear ring)	Disque d'étanchéité (avec anneau d'usure)	Dichtungsscheibe (mit Ausgleichsring)	Disco de alojamiento retén (con anillo de desgaste)	Disco porta-vedante (com anel compensador de desgaste)
4	Lanterna	Adaptor	Lanterne	Antriebslaterne	Adaptador	Adaptador
5	Rasamento anteriore	Front wear plate	Bague pour régulation du jeu axial avant	Vordere Ausgleichsscheibe	Espesor delantero	Casquilho anterior
6	Rasamento posteriore	Back wear plate	Bague pour régulation du jeu axial arrière	Hintere Ausgleichsscheibe	Espesor trasero	Casquilho posterior
7	Tenuta meccanica e guarnizione OR	Mechanical seal and O-Ring	Garniture mécanique et joint torique	Gleitringdichtung und O-Ring	Retén mecánico y aro tórico	Vedante mecânico e vedação OR
8	Guarnizione OR	O-Ring	Joint torique	O-Ring	Aro tórico	Vedação OR
9	Motore completo	Complete motor	Moteur complet	Kompletter Motor	Motor completo	Motor complete
10	Gruppo fissaggio girante (dado, rosetta e linguetta)	Impeller locking group (nut, washer and key)	Groupe de fixation roue (ecrou, rondelle et clavette)	Befestigungsgruppe Laufrads auf (Feststellmutter, Unterlegscheibe und Passfeder)	Grupo de fijación rodete (tuerca, arandela y lengüeta)	Grupo de fixação do impulsor (porca, anilha e lingueta)
11	Valvola e tappi	Valve and plugs	Vanne et bouchons	Ventil und Stutzen	Válvula y tapones	Válvula e tampões
12	Raccordo motore	Motor connector	Raccord moteur	Motoranschluss	Acoplamiento motor	Conexão motor
13	Giunto con gruppo fissaggio girante	Coupling with impeller locking group	Manchon avec groupe de fixation roue	Kupplung mit Befestigungsgruppe Laufrad	Junta con grupo de fijación rodete	Junta com grupo de fixação do impulsor
N.	Beschrijving nl	Περιγραφή el	Açıklama tr	Kuvaus fi	Описание ru	Opis pl
1	Compleet pomphuis	Πλήρες σώμα αντλίας	Komple pompa gövdesi	Täydellinen pumpun runko	Полный корпус насоса	Kompletny korpus pompy
2	Waaier en slijtringen	Πτερύγιο και δακτύλιοι τριβής	Pompa rotoru ve aşınma halkaları	Juoksupyörä ja kulumisrenkaat	Рабочее колесо и изнашиваемые кольца	Wirnik i pierścienie wymienne
3	Dichtingssteunplaat (met slijtring)	Δίσκος μηχανικού στυπιοθλίπτη και δακτύλιος τριβής	Sızdırmazlık diskisi (aşınma halkası ile)	Tiivisteenn kannatuslevy (kulumisrenkaalla)	Диск держателя прокладки (с изнашиваемым кольцом)	Tarcza uszczelki (z wymiennym pierścieniem)
4	Lantaarnstuk	Μπρακέτο	Adaptör	Sovitín	Адаптер	Lampa
5	Voorste schraapring	Πρόσθιος δακτύλιος τριβής	Ön ara halkası	Etuväilievý	Передняя утолщающая прокладка	Wyglądanie przednie
6	Achterste schraapring	Οπίσθιος δακτύλιος τριβής	Arka ara halkası	Takavälievý	Задняя утолщающая прокладка	Wyglądanie tylne
7	Mechanische asafdichting en O-ringafdichting	Μηχανικός στυπιοθλίπτης και ροδέλες στεγανοποίησης	Mekanik conta ve O-Ring	Mekaaninen tiiviste ja O-rengas	Механическая прокладка и уплотнение OR	Uszczelnienie mechaniczne i uszczelka O-Ring
8	O-ringafdichting	Ροδέλα στεγανοποίησης	O-Ring	O-rengas	Прокладка OR	Uszczelka O-Ring
9	Complete motor	Πλήρης κινητήρας	Komple motor	Täydellinen moottori	Укомплектованный двигатель	Kompletny silnik
10	Waaierbevestigingsblok (moer, ring en spie)	Σετ ασφάλισης πτερυγίου (παξιμάδι, ροδέλα, σφήνα)	Pompa rotorunu sabitleme takımı (somun, rondela ve kama)	Juoksupyörän kiinnityskokonaisuus (mutteri, välirengas ja kiila)	Узел фиксации рабочего колеса (гайка, шайба и шпонка)	Zespół mocujący wirnika (nakrętka, podkładka i wpust)
11	Klep en doppen	Βαλβίδα εξαέρωσης και τάπες	Valf ve tapalar	Venttiili ja tulpat	Клапан и заглушки	Zawór i nakrętki
12	Motorverbinding	Έδρανο	Motor bağlantı elemanı	Moottoriiliitos	Патрубок двигателя	Złącza silnika
13	Koppeling met waaierbevestigingsblok	Προέκταση άξονα και σετ ασφάλισης πτερυγίου	Pompa rotorunu sabitleme takımı ile mafsäl	Liitos juoksupyörän kiinnityskokonaisuudella	Соединение с узлом фиксации рабочего колеса	Złącze z zespołem mocującym wirnika

## FCS 40 - FCS4 40

	40-125/07	40-125/11	40-160/15	40-160/22	40-200/30	40-200/40	40-200/55	40-250/75	40-250/110
ELP 3 ~, 2P, 50	107480720	107480730	107480740	107480750	102240760	102240770	102240780	102240800	102240810
kW ->	0,75	1,1	1,5	2,2	3,0	4,0	5,5	7,5	11,0
						40-200/05	40-200/07	40-250/11	40-250/15
ELP 3 ~, 4P, 50						107481010	107481020	102245800	102245810
kW ->						0,55	0,75	1,1	1,5

Kit	Dia. - Ø	119	136	150	164	188	205	222	242	256
2*	Impeller 2P	KL04AA9	KL04ABA	KL04ABB	KL04ABC	KL04ABD	KL04ABE	KL04ACK	KL04ACL	KL04ACM
	Impeller 4P						KL04ABE	KL04ACK	KL04ACL	KL04ACM

7*	Materials ->	Q1BEGG	Q1Q1EGG	Q1BVGG	Q1Q1VGG	Std -> Seal Q1BEGG - OR EPDM				
	Seal D22 kit	KL01ACD	KL01ABZ	KL01ACG	KL01AB5					
8*	OR Kit EPDM	KL02AAH	All Versions incl. 3 Dia - OR .							
	OR Kit FPM	KL02AAK	All Versions incl. 3 Dia - OR .							
10	Imp. lock kit M12	KL39AAA								
11	Valves and Plugs	KL34AAA								
13	Coupling D:18	KL10AAH	2P->125/11							4P->200/07
		KL10AAK	2P->160/22							4P->250/15
		KL10AAL	2P->200/40							
		KL10AAM	2P->250/75							
		KL10AAN	2P->250/110							

### Single Unit

1	Pump body	151350220	151350220	151350220	151350220	151350240	151350240	151350240	151350240	151350240
3	Seal-housing disc	160150201	160150201	150150041	150150041	150150071	150150071	150150071	150150071	150150071
4	Adaptor	161430511	161430511	161430511	161430511	161452881	161452881	161452881	161452881	161452881
5	Wear ring	168601491	168601491	168601491	168601491	168601491	168601491	168601491	168601491	168601491
6	Back wear ring			465020201	465020201	465020201	465020201	465020201	465020201	465020201
9**	Motor 3~, 2P	107230320	107230340	107230360	107230380	107106257	107106307	107106337	107106347	107106397
	Size	71	80	80	80	90	100	112	112	132
	Motor 3~, 4P						107230740	107230800	107106611	107106621
	Size						80	80	90	90
12	Mot/connector	167350110	167350110	167350110	167350110	167350160	167350160	167350130	167350130	167350140

\* Recommended spare parts - Parti di ricambio consigliate

\* Pièces détachées conseillées - Empfohlene Ersatzteile

\*\* Motor spare parts: see motor lists - Parti di ricambio motore: vedi liste motore

\*\* Pièces détachées Moteur : voir listes moteur - Motor-Ersatzteile: gem. Motorlisten

FCS40-100\_5\_Jan00\_EdE

## FCS 50 - FCS4 50

	50-125/11	50-125/15	50-160/22	50-160/30	50-160/40	50-200/55	50-200/75	50-250/110A	50-250/110	50-250/150
ELP 3 ~, 2P, 50 kW ->	107480840	107480850	107480870	102240880	102240890	102240910	102240920	102240930	102240940	102240950
	1,1	1,5	2,2	3	4	5,5	7,5	11	11	15
ELP 3 ~, 4P, 50 kW ->						50-200/07	50-200/11		50-250/15	50-250/22
						107481040	102245910		102245940	102245950
						0,75	1,1		1,5	2,2

Kit	Dia. - Ø	112	126	143	159	171	190	209	218	233	251
2*	Impeller 2P	KL04ABF	KL04ABG	KL04ABH	KL04ABK	KL04ABL	KL04ABM	KL04ABN	KL04ABP	KL04ABQ	KL04ABR
	Impeller 4P						KL04ABM	KL04ABN		KL04ABQ	KL04ABR

7*	Material ->	Q1BEGG	Q1Q1EGG	Q1BVGG	Q1Q1VGG	2P-> 250/110	Std -> Seal Q1BEGG - OR EPDM
	Seal D22 kit	KL01ACD	KL01ABZ	KL01ACG	KL01AB5	4P-> 250/15	
	Material ->	Q1BEGG	Q1Q1EGG	Q1VGG	Q1Q1VGG	2P, 250/150	
	Seal D28 kit	KL01ACE	KL01AB0	KL01ACH	KL01AB6	4P, 250/22	
8*	OR Kit EPDM	KL02AAH	All Versions incl. 3 Dia - OR .				
	OR Kit FPM	KL02AAK	All Versions incl. 3 Dia - OR .				
10	Imp. lock kit M12	KL39AAA	2P->250/110		4P->250/15		
	Imp. lock kit M16	KL39AAB	2P, 250/150		4P, 250/22		
11	Valves and Plugs	KL34AAA					
13	Coupling D:18	KL10AAH	2P->125/11		4P->200/07		
		KL10AAK	2P->160/22		4P->250/15		
		KL10AAL	2P->160/40				
		KL10AAM	2P->200/75				
	KL10AAN	2P->250/110					
Coupling D:24	KL10AAQ			4P, 250/22			
		KL10AAS	2P, 250/150				

### Single Unit

1	Pump body	151350260	151350260	151350260	151350260	151350280	151350280	151350280	151350280	151350280	151350280
3	Seal-housing disc	160150201	160150201	160150201	150150041	150150041	150150071	150150071	150150071	150150071	150150091
4	Adaptor 2P	161430511	161430511	161430511	161430521	161430521	161452881	161452881	161452881	161452881	161452881
	Adaptor 4P						161452881	161452881		161452881	161452881
5	Wear ring	168601500	168601500	168601500	168601500	168601500	168601500	168601511	168601511	168601511	168601511
6	Back wear ring				465020201	465020201	465020201	465020201	465020201	465020201	465020201
9**	Motor 3~, 2P	107230340	107230360	107230380	107106257	107106307	107106337	107106347	107106397	107106397	130646421
	Size	80	80	80	90	100	112	112	132	132	160
	Motor 3~, 4P						107230800	107106611		107106621	107106651
	Size						80	90		90	100
12	Mot/connector 2P	167350110	167350110	167350110	167350120	167350120	167350130	167350130	167350140	167350140	167350140
	Mot/connector 4P						167350150	167350150		167350150	167350160

\* Recommended spare parts - Parti di ricambio consigliate

\* Pièces détachées conseillées - Empfohlene Ersatzteile

\*\* Motor spare parts: see motor lists - Parti di ricambio motore: vedi liste motore

\*\* Pièces détachées Moteur : voir listes moteur - Motor-Ersatzteile: gem. Motorlisten

## FCS 65 - FCS4 65

ELP 3 ~, 2P, 50	65-125/22	65-125/30	65-125/40	65-160/55	65-160/75	65-200/110A	65-200/110	65-250/150	65-250/185	65-250/220
	107480980	102240990	102241000	102241010	102241020	102241030	102241040	102241050	102241060	102241070
kw ->	2,2	3,0	4,0	5,5	7,5	11,0	11,0	15,0	18,5	22,0
ELP 3 ~, 4P, 50				65-160/07	65-160/11		65-200/15		65-250/22	65-250/30
kw ->				107481060	102246020		102246040		102246060	102246070
				0,75	1,1		1,5		2,2	3,0

<b>Kit</b>	Dia. - Ø	119	130	139	158	174	197	209	224	237	250
2*	Impeller 2P	KL04ABS	KL04ABT	KL04ABU	KL04ABV	KL04ABW	KL04ABX	KL04ABY	KL04ABZ	KL04AB0	KL04AB1
	Impeller 4P				KL04ABV	KL04ABW		KL04ABY		KL04AB0	KL04AB1

7*	Materials ->	Q1BEGG	Q1Q1EGG	Q1BVG	Q1Q1VGG	2P-> 200/110	
	Seal D22 kit	KL01ACD	KL01ABZ	KL01ACG	KL01AB5	4P-> 200/15	
	Materials ->	Q1BEGG	Q1Q1EGG	Q1BVG	Q1Q1VGG	2P-> 250/220	
	Seal D28 kit	KL01ACE	KL01AB0	KL01ACH	KL01AB6	4P->250/30	Std -> Seal Q1BEGG - OR EPDM
8*	OR Kit EPDM	KL02AAH	All Versions incl. 3 Dia - OR .				
	OR Kit FPM	KL02AAK	All Versions incl. 3 Dia - OR .				
10	Imp. lock kit M12	KL39AAA	2P->200/110		4P->200/15		
	Imp. lock kit M16	KL39AAB	2P, 250		4P, 250		
11	Valves and Plugs	KL34AAA					
13	Coupling D:18	KL10AAH			4P, 160/07		
		KL10AAK	2P, 125/22		4P->200/15		
		KL10AAL	2P->125/40				
		KL10AAM	2P->160/75				
		KL10AAN	2P->200/110				
Coupling D:24	KL10AAQ			4P->250/30			
	KL10AAS	2P->250/185					
	KL10AAT	2P,250/220					

### Single Unit

1	Pump body	151350300	151350300	151350300	151350300	151350300	151350320	151350320	151350320	151350320	151350320
3	Seal-housing disc	160150221	160150221	160150221	150150051	150150051	150150071	150150071	150150091	150150091	150150091
4	Adaptor	161453151	161453151	161453151	161453151	161453151	161452881	161452881	161452881	161452881	161452881
5	Wear ring	168601511	168601511	168601511	168601511	168601511	168601511	168601511	168601511	168601511	168601511
6	Back wear ring				465020201	465020201	465020201	465020201	465020201	465020201	465020201
9**	Motor 3~, 2P	107230380	107106257	107106307	107106337	107106347	107106397	107106397	107106421	107106431	107106447
	Size	90	90	100	112	112	132	132	160	160	160
	Motor 3~, 4P				107230800	107106611		107106621		107106651	107106661
	Size				80	90		90		100	100
12	Mot/connector 2P	167350150	167350160	167350160	167350130	167350130	167350140	167350140	167350140	167350140	167350140
	Mot/connector 4P				167350150	167350150		167350150		167350160	167350160

\* Recommended spare parts - Parti di ricambio consigliate

\* Pièces détachées conseillées - Empfohlene Ersatzteile

\*\* Motor spare parts: see motor lists - Parti di ricambio motore: vedi liste motore

\*\* Pièces détachées Moteur : voir listes moteur - Motor-Ersatzteile: gem. Motorlisten

## FCS 80 - FCS4 80

ELP 3 ~, 2P, 50	<b>80-125/30</b>	<b>80-125/40</b>	<b>80-125/55</b>	<b>80-160/75</b>		<b>80-200/110</b>	<b>80-200/150</b>	<b>80-200/185</b>	<b>80-200/220</b>
	102241100	102241110	102241120	102241140		102241180	102241190	102241200	102241210
kW ->	<b>3.0</b>	<b>4.0</b>	<b>5.5</b>	<b>7.5</b>		<b>11.0</b>	<b>15.0</b>	<b>18.5</b>	<b>22.0</b>
ELP 3 ~, 4P, 50			<b>80-125/07</b>	<b>80-125/11</b>	<b>80-200/15</b>			<b>80-200/22</b>	<b>80-200/30</b>
			107481080	102246120	102246180			102246190	102246200
kW ->			<b>0.75</b>	<b>1.1</b>	<b>1.5</b>			<b>2.2</b>	<b>3.0</b>
	<b>80-250/40</b>	<b>80-250/55</b>							
	102246220	102246230							
kW ->	<b>4.0</b>	<b>5.5</b>							

Kit	Dia. - Ø	113	121	129	140	177	168	187	198	210
		241	258							
2*	Impeller 2P	KL04AC8	KL04AB2	KL04AB3	KL04AB4		KL04AB6	KL04AB8	KL04AB9	KL04ACA
	Impeller 4P			KL04AB3	KL04AB4	KL04ALE			KL04AB9	KL04ACA
		KL04ALA	KL04ALB							

7*	Material -->	<b>Q1BEGG</b>	<b>Q1Q1EGG</b>	<b>Q1BVG</b>	<b>Q1Q1VGG</b>	<b>2P-&gt;160/75</b>	Std -> Seal Q1BEGG - OR EPDM
	Seal D22 kit	KL01ACD	KL01ABZ	KL01ACG	KL01AB5	<b>4P-&gt;125/15</b>	
	Material -->	<b>Q1BEGG</b>	<b>Q1Q1EGG</b>	<b>Q1BVG</b>	<b>Q1Q1VGG</b>	<b>2P-&gt;200/220</b>	
	Seal D28 kit	KL01ACE	KL01AB0	KL01ACH	KL01AB6	<b>4P-&gt;250/55</b>	
8*	OR EPDM kit	KL02AAH	<b>All Versions incl. 3 Dia - OR .</b>				
	OR FPM Kit	KL02AAK	<b>All Versions incl. 3 Dia - OR .</b>				
10	Imp.lock kit M12	KL39AAA	<b>2P-&gt;160/75; 4P-&gt;125/15</b>				
	Imp.lock kit M16	KL39AAB	<b>2P-&gt;250/220; 4P-&gt;250/55</b>				
11	Valves and Plugs	KL34AAA					
13	Coupling D:18	KL10AAH			<b>4P,125/07</b>		
		KL10AAK			<b>4P,125/11</b>		
		KL10AAL	<b>2P-&gt;125/40</b>				
	Coupling D:24	KL10AAM	<b>2P-&gt;125/75</b>				
		KL10AAP			<b>4P,200/11</b>		
		KL10AAQ			<b>4P-&gt;250/40</b>		
	KL10AAR			<b>4P, 250/55</b>			
	KL10AAS	<b>2P-&gt;200/185</b>					
	KL10AAT	<b>2P-&gt;200/220</b>					

### Single Unit, 2P

1	Pump body	151350340	151350340	151350340	151350340		151350360	151350360	151350360	151350360
3	Seal-housing disc	160150221	160150221	160150221	160150221		150150081	150150081	150150081	150150081
4	Adaptor	161453141	161453151	161453151	161453151		161452881	161452881	161452881	161452881
5	Wear ring	168601521	168601521	168601521	168601521		168601580	168601580	168601580	168601580
6	Back wear ring						168601270	168601270	168601270	168601270
9**	Motor 3~, 2P	107106257	107106307	107106337	107106347		107106397	107106421	107106431	107106447
	Size	90	100	112	112		132	160	160	160
12	Mot/Connector	167350120	167350160	167350130	167350130		167350140	167350140	167350140	167350140

### Single Unit, 4P

1	Pump body			151350340	151350340	151350360			151350360	151350360
		151350360	151350360							
3	Seal-housing disc			160150221	160150221	150150081			150150081	150150081
		150150081	150150081							
4	Adaptor			161453151	161453151	161452881			161452881	161452881
		161452881	161452881							
5	Wear ring			168601521	168601521	168601580			168601580	168601580
		168601580	168601580							
6	Back wear ring								168601270	168601270
		168601270	168601270							
9**	Motor 3~, 4P			107230800	107106611	107106621			107106651	107106661
		107106681	107106711							
		112	132	80	90	90			100	100
12	Mot/Connector			167350150	167350150	167350150			167350160	167350160
		167350160	167350130							

\* Recommended spare parts - Parti di ricambio consigliate

\* Pièces détachées conseillées - Empfohlene Ersatzteile

\*\* Motor spare parts: see motor lists - Parti di ricambio motore: vedi liste motore

\*\* Pièces détachées Moteur : voir listes moteur - Motor-Ersatzteile: gem. Motorlisten

## FCS 100 - FCS4 100

ELP 3 ~, 2P	<b>100-160/110</b>		<b>100-200/185</b>	<b>100-200/220</b>			
	102241260		102241300	102241310			
	<b>11.0</b>		<b>18.5</b>	<b>22.0</b>			
ELP 3 ~, 4P	<b>100-160/15</b>	<b>100-200/22</b>	<b>100-200/30</b>	<b>100-250/40</b>	<b>100-250/55</b>	<b>100-250/75</b>	
	102246260	102246280	102246290	102246320	102246330	102246340	
	<b>1.50</b>	<b>2.20</b>	<b>3.0</b>	<b>4.0</b>	<b>5.50</b>	<b>7.50</b>	

<b>Kit</b>	Dia. - Ø	152	160	173	189	217	238	256
2*	Impeller 2P	KL04AK6		KL04AK1	KL04AK2			
	Impeller 4P		KL04AK0	KL04AK1	KL04AK2	KL04AK4	KL04AK5	KL04ALD

7*	Material-->	<b>Q1BEGG</b>	<b>Q1Q1EGG</b>	<b>Q1BVGG</b>	<b>Q1Q1VGG</b>	2P -> 200/220	Std -> Seal Q1BEGG - OR EPDM
	Seal D28 kit	KL01ACE	KL01ABZ	KL01ACH	KL01AB6	4P -> 250/40	
	Material-->	<b>Q1BEGG</b>	<b>Q1Q1VGG</b>	<b>Q1BVGG</b>	<b>Q1Q1VGG</b>		
	Seal D33 kit	KL01ACF	KL01AB1	KL01ACK	KL01AB7	4P-> 250/75	
8*	OR Kit EPR	KL02AAH	Incl. 3 Dia - OR .				
	OR Kit FPM	KL02AAK	Incl. 3 Dia - OR .				
10	Imp. lock kit M16	KL39AAB	2P->200/220			4P->250/40	
	Imp. lock kit M20	KL39AAC				4P->250/75	
11	Valves and Plugs	KL34AAA					
13	Coupling D:24	KL10AAP				4P, 160/15	
		KL10AAQ				4P->250/40	
		KL10AAS	2P->200/185				
	KL10AAT	2P, 200/220					
	Coupling D:29	KL10AAV				4P->250/75	

### Single Unit

1	Pump body	151350380		151350400	151350400		
			151350380	151350400	151350400	151350400	151350400
3	Seal-housing disc	150150061		150150081	150150081		
			150150061	150150081	150150081	150150101	150150101
4	Adaptor	161453151		161452881	161452881		
			161453151	161452881	161452881	161452881	161452881
5	Wear ring	168601270		168601270	168601270		
			168601270	168601270	168601270	168601270	168601270
6	Back wear ring	168601270		168601270	168601270		
			168601270	168601270	168601270	168601270	168601270
9**	Motor 3~, 2P	107106397		107106431	107106447		
	Size	132		160	160		
	Motor 3~, 4P		107106621	107106651	107106661	107106681	107106711
	Size		90	100	100	112	132
12	Mot/connector 2P	167350140		167350140	167350140		
	Mot/connector 4P		167350150	167350160	167350160	167350160	167350130

\* Recommended spare parts - Parti di ricambio consigliate

\* Pièces détachées conseillées - Empfohlene Ersatzteile

\*\* Motor spare parts: see motor lists - Parti di ricambio motore: vedi liste motore

\*\* Pièces détachées Moteur : voir listes moteur - Motor-Ersatzteile: gem. Motorlisten

# xylem

