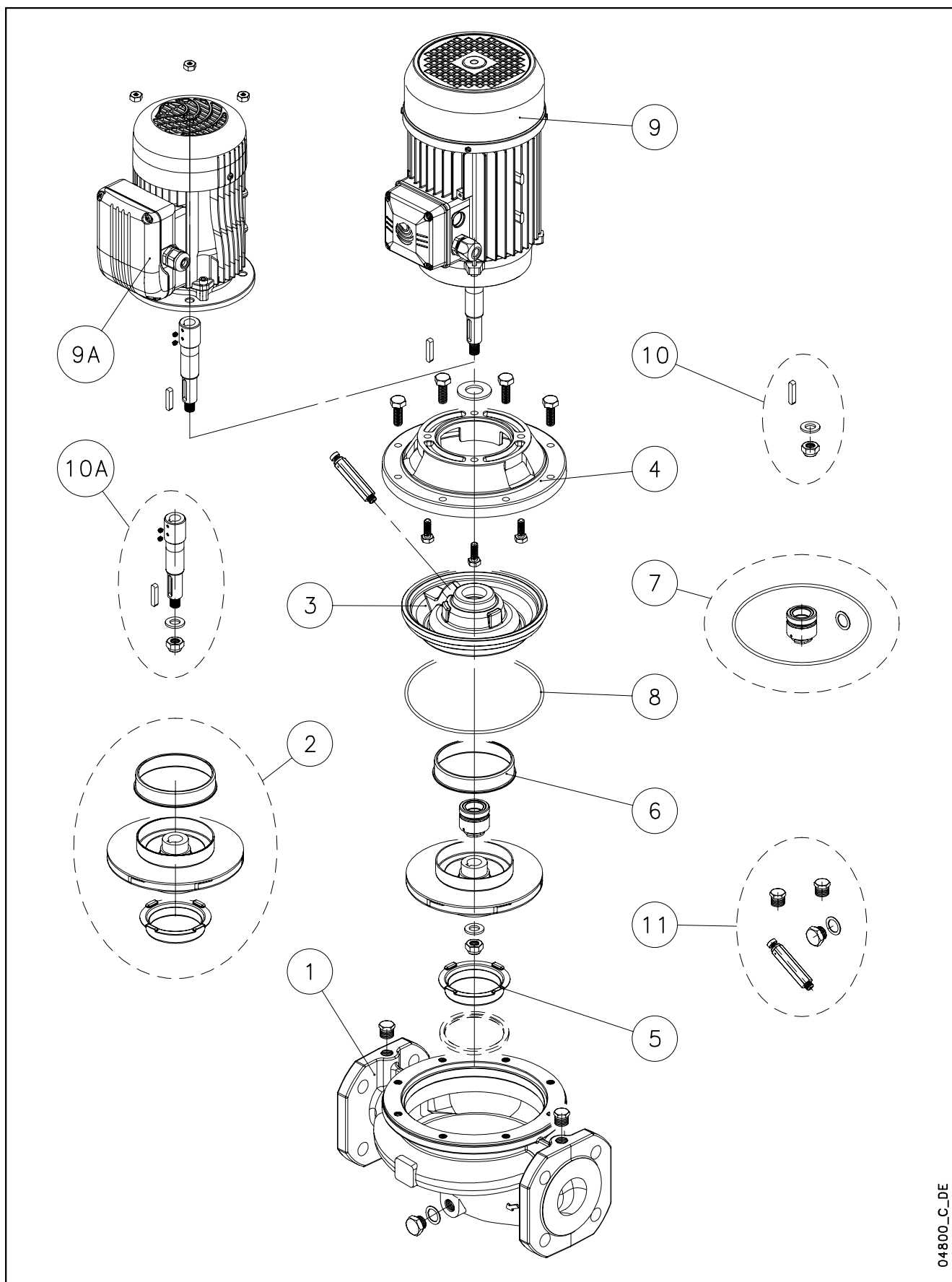


## FCE-FCE4 / LHX-LHXG / GFCE-GFCE4



04800\_C\_DE

Lowara, Flygt and Vogel Pumpen are a trademark of Xylem Inc. or one of its subsidiaries. Goulds is a registered trademark of Goulds Pumps, Inc. and is used under license.

N.	Descrizione it	Description en	Description fr	Beschreibung de	Descripción es	Descrição pt
1	Corpo pompa completo	Complete pump body	Corps de pompe complete	Kompletter pumpengehäuse	Caja bomba completa	Corpo da bomba complete
2	Girante e anelli di usura	Impeller and wear rings	Roue et anneaux d'usure	Lauftrad und Verschleißringe	Rodete y anillos de desgaste	Impulsor e anéis compensadores de desgaste
3	Disco portatenuta (con anello di usura)	Seal housing disc (with wear ring)	Disque d'étanchéité (avec anneau d'usure)	Dichtungsscheibe (mit Ausgleichsring)	Disco de alojamiento retén (con anillo de desgaste)	Disco porta-vedante (com anel compensador de desgaste)
4	Lanterna	Adaptor	Lanterne	Antriebslaterne	Adaptador	Adaptador
5	Rasamento anteriore	Front wear plate	Bague pour régulation du jeu axial avant	Vordere Ausgleichsscheibe	Espesor delantero	Casquillo anterior
6	Rasamento posteriore	Back wear plate	Bague pour régulation du jeu axial arrière	Hintere Ausgleichsscheibe	Espesor trasero	Casquillo posterior
7	Tenuta meccanica e guarnizione OR	Mechanical seal and O-Ring	Garniture mécanique et joint torique	Gleitringdichtung und O-Ring	Retén mecánico y aro tórico	Vedante mecânico e vedação OR
8	Guarnizione OR	O-Ring	Joint torique	O-Ring	Aro tórico	Vedação OR
9	Motore completo	Complete motor	Moteur complet	Kompletter Motor	Motor completo	Motor complete
9A	Motore completo (solo 4 poli grandezza 71)	Complete motor (4-poles size 71 only)	Moteur complet (uniquement 4 pôles taille 71)	Kompletter Motor (nur 4polig Größe 71)	Motor completo (só 4 polos tamaño 71)	Motor complete (só 4 pólos grandezza 71)
10	Gruppo fissaggio girante (dado, rosetta e linguetta)	Impeller locking group (nut, washer and key)	Groupe de fixation roue (ecrou, rondelle et clavette)	Befestigungsgruppe Laufrads auf (Feststelmutter, Unterlegscheibe und Passfeder)	Grupo de fijación rodete (tuerca, arandela y lengüeta)	Grupo de fixação do impulsor (porca, anilha e lingueta)
10A	Giunto con gruppo fissaggio girante (solo 4 poli grandezza 71)	Coupling with impeller locking group (4-poles size 71 only)	Manchon avec groupe de fixation roue (uniquement 4 pôles taille 71)	Kupplung mit Befestigungsgruppe Laufrad (nur 4polig Größe 71)	Junta con grupo de fijación rodete (só 4 polos tamaño 71)	Junta com grupo de fixação do impulsor (só 4 pólos grandezza 71)
11	Valvola e tappi	Valve and plugs	Vanne et bouchons	Ventil und Stutzin	Válvula y tapones	Válvula e tampões
N.	Beschrijving nl	Περιγραφή el	Açıklama tr	Kuvaus fi	Описание ru	Opis pl
1	Compleet pomphuis	Πλήρες σώμα αντλίας	Komple pompa gövdesi	Täydellinen pumpun runko	Полный корпус насоса	Kompletny korpus pompy
2	Waaier en slijtringen	Πτερύγιο και δακτύλιοι τριβής	Pompa rotoru ve aşınma halkaları	Juoksupyörä ja kulumisrenkaat	Рабочее колесо и изнашиваемые кольца	Wirnik i pierścienie wymienne
3	Dichtingssteenplaat (met slijtring)	Δίσκος μηχανικού στυπιοθλίπτη και δακτύλιος τριβής	Sızdırmazlık diskisi (aşınma halkası ile)	Tiivisteenn kannatuslevy (kulumisrenkaalla)	Диск держателя прокладки (с изнашиваемым кольцом)	Tarcza uszczelki (z wymiennym pierścieniem)
4	Lantaarnstuk	Μπρακέτο	Adaptör	Sovitin	Адаптер	Lampa
5	Voorste schraapring	Πρόσθιος δακτύλιος τριβής	Ön ara halkası	Etvälilevy	Передняя утолщающая прокладка	Wyglądanie przednie
6	Achterste schraapring	Οπίσθιος δακτύλιος τριβής	Arka ara halkası	Takavälilevy	Задняя утолщающая прокладка	Wyglądanie tylne
7	Mechanische asafdichting en O-ringafdichting	Μηχανικός στυπιοθλίπτης και ροδέλες στεγανοποίησης	Mekanik conta ve O-Ring	Mekaaninen tiiviste ja O-rengas	Механическая прокладка и уплотнение OR	Uszczelnienie mechaniczne i uszczelka O-Ring
8	O-ringafdichting	Ροδέλα στεγανοποίησης	O-Ring	O-rengas	Прокладка OR	Uszczelka O-Ring
9	Complete motor	Πλήρης κινητήρας	Komple motor	Täydellinen moottori	Укомплектованный двигатель	Kompletny silnik
9A	Complete motor (alleen 4-polig grootte 71)	Πλήρης κινητήρας (τετραπολικό μόνο μεγέθους 71)	(sadece 4 kutuplu; boyu: 71)	Täydellinen moottori (ainoastaan 4 naapa, koko 71)	Укомплектованный двигатель (только 4 полюса величина 71)	Kompletny silnik (tylko 4 bieguny wielkość 71)
10	Waaierbevestigingsblok (moer, ring en spie)	Σετ ασφάλισης πτερυγίου (παξιμάδι, ροδέλα, σφίνα)	Pompa rotorunu sabitleme takımı (somun, rondela ve kama)	Juoksupyörän kiinnityskokonaisuus (mutteri, välirengas ja kiila)	Узел фиксации рабочего колеса (гайка, шайба и шпонка)	Zespół mocujący wirnika (nakrętka, podkładka i wpust)
10A	Koppeling met waaierbevestigingsblok (alleen 4-polig grootte 71)	Προέκταση άξονα και σετ ασφάλισης πτερυγίου	Pompa rotorunu sabitleme takımı ile mafsalsal (sadece 4 kutuplu; boyu: 71)	Liitos juoksupyörän kiinnityskokonaisuudella (ainoastaan 4 naapa, koko 71)	Соединение с узлом фиксации рабочего колеса (только 4 полюса величина 71)	Złącze z zespołem mocującym wirnika (tylko 4 bieguny wielkość 71)
11	Klep en doppen	Βαλβίδα εξαέρωσης και τάπες	Valf ve tapalar	Venttiili ja tulpat	Клапан и заглушки	Zawór i nakrętka

## FCEM 40/P - FCE 40/P - FCE4 40/P

ELP 1 ~, 2P, 50	40-125/07	40-125/11	40-160/15	40-160/22/P	40-200/40A/P	40-200/40/P	40-200/55/P	40-250/75/P	40-250/110/P
	107470500	107470510	107470520	101202030					
ELP 3 ~, 2P, 50	40-125/07	40-125/11	40-160/15	40-160/22	40-200/40A/P	40-200/40/P	40-200/55/P	40-250/75/P	40-250/110/P
	107470020	107470030	107470040	107470050	101200060	101200070	101200080	101200100	101200110
kW ->	<b>0,75</b>	<b>1,1</b>	<b>1,5</b>	<b>2,2</b>	<b>4,0</b>	<b>4,0</b>	<b>5,5</b>	<b>7,5</b>	<b>11,0</b>
	40-125/02A	40-125/02	40-160/02	40-160/03		40-200/05	40-200/07	40-250/11/P	40-250/15/P
ELP 3 ~, 4P	107470600	107470610	107470620	107470630		107470640	107470650	101205100	101205110
	<b>0,25</b>	<b>0,25</b>	<b>0,25</b>	<b>0,37</b>		<b>0,55</b>	<b>0,75</b>	<b>1,1</b>	<b>1,5</b>

Kit		Di. - Ø	119	136	150	164	188	205	222	242	256
2*	Impeller 2P	KL04AA9	KL04ABA	KL04ABB	KL04ABC	KL04ABD	KL04ABE	KL04ACK	KL04ACL	KL04ACM	
	Impeller 4P	KL04AA9	KL04ABA	KL04ABB	KL04ABC		KL04ABE	KL04ACK	KL04ACL	KL04ACM	

7*	Material-->	<b>VBEGG</b>	<b>Q1Q1EGG</b>	<b>VBVGG</b>	<b>Q1Q1VGG</b>	
	Seal D22 kit	KL01AAS	KL01ABZ	KL01AB2	KL01AB5	Std->Seal VBEGG - OR EPDM
8*	OR EPDM Kit	KL02AAH	<b>All Versions incl. 3 Dia - OR .</b>			
	OR FPM Kit	KL02AAK	<b>All Versions incl. 3 Dia - OR .</b>			
10	Imp. lock kit M12	KL39AAA				
10A	Coupling 4P D:18	KL10AAG	<b>4P -&gt; 160/03</b>			
11	Valves and Plugs	KL34AAA				

### Single Unit

1	Pump body	151350220	151350220	151350220	151350220	151350240	151350240	151350240	151350240	151350240
3	Seal Housing disc	160150201	160150201	150150041	150150041	150150071	150150071	150150071	150150071	150150071
4	Adaptor 2P	161430511	161430511	161430511	161430511	161452891	161452891	161452891	161452881	161452881
	Adaptor 4P	161430521	161430521	161430521	161430521		161452881	161452881	161452881	161452881
5	Wear ring	168601491	168601491	168601491	168601491	168601491	168601491	168601491	168601491	168601491
6	Back wear ring			465020201	465020201	465020201	465020201	465020201	465020201	465020201
9**	Motor 1 ~, 2P	13278H00E	13278H00F	13282H00F	50004HH00					
	Motor 3 ~, 2P	13274R00E	13274R00F	13278R00F	13282R00F	50008VN00	50008VN00	50013VH00	50017VH00	50019VH00
	Motor 3 ~, 4P						13275R00J	13279R00J	50005RS00	50006RS00
9A**	Motor 3 ~, 4P	13258R00L	13258R00L	13258R00L	13262R00L					

Seal Housing disc = disc + wear rings

\* Recommended spare parts - Parti di ricambio consigliate

\* Pièces détachées conseillées - Empfohlene Ersatzteile

\*\* Motor spare parts: see motor lists - Parti di ricambio motore: vedi liste motore

\*\* Pièces détachées Moteur : voir listes moteur - Motor-Ersatzteile: gem. Motorlisten

FCE40-100\_5\_P\_Feb08\_Edc

## FCEM 50/P - FCE 50/ - FCE4 50/P

	50-125/11	50-125/15	50-160/22 /P							
ELP 1 ~, 2P, 50	107470540	107470550	101202050							
	50-125/11	50-125/15	50-160/22	50-160/30/P	50-160/40/P	50-200/55/P	50-200/75/P	50-250/92/P	50-250/110/P	50-250/150/P
ELP 3 ~, 2P, 50	107470140	107470150	107470170	101200180	101200190	101200210	101200220	101200230	101200240	101200250
kw ->	<b>1,1</b>	<b>1,5</b>	<b>2,2</b>	<b>3,0</b>	<b>4,0</b>	<b>5,5</b>	<b>7,5</b>	<b>9,2</b>	<b>11</b>	<b>15</b>
			50-125/02	50-125/03	50-160/05	50-200/07	50-200/11/P		50-250/15/P	50-250/22/P
ELP 3 ~, 4P, 50			107470670	107470680	107470690	107470700	101205210		101205240	101205250
kw ->			<b>0,25</b>	<b>0,37</b>	<b>0,55</b>	<b>0,75</b>	<b>1,1</b>		<b>1,5</b>	<b>2,2</b>

<b>Kit</b>	Dia. - Ø	112	126	143	159	171	190	209	218	233	251
2*	Impeller 2P	KL04ABF	KL04ABG	KL04ABH	KL04ABK	KL04ABL	KL04ABM	KL04ABN	KL04ABP	KL04ABQ	KL04ABR
	Impeller 4P			KL04ABH	KL04ABK	KL04ABL	KL04ABM	KL04ABN		KL04ABQ	KL04ABR

7*	Material -->	<b>VBEGG</b>	<b>Q1Q1EGG</b>	<b>VBVGG</b>	<b>Q1Q1VGG</b>	2P->250/110	Std->Seal VBEGG - OR EPDM
	Seal D22 Kit	KL01AAS	KL01ABZ	KL01AB2	KL01AB5	4P->250/15	
	Material -->	<b>VBEGG</b>	<b>Q1Q1EGG</b>	<b>VBVGG</b>	<b>Q1Q1VGG</b>	2P - 250/150	
	Seal D28 Kit	KL01AAV	KL01AB0	KL01AB3	KL01AB6	4P->250/22	
8*	OR EPDM Kit	KL02AAH	Incl. 3 Dia - OR .				
	OR NBR Kit	KL02AAK	Incl. 3 Dia - OR .				
10	Imp.lock kit M12	KL39AAA	2P->250/110; 4P->250/15				
	Imp.lock kit M16	KL39AAB	2P: 250/150; 4P: 250/22				
10A	Coupling 4P D:18	KL10AAG	4P -> 125/03				
11	Valves and Plugs	KL34AAA					

### Single Unit

1	Pump body	151350260	151350260	151350260	151350260	151350260	151350280	151350280	151350285	151350285	151350285
3	Seal-housing disc	160150201	160150201	160150201	150150041	150150041	150150071	150150071	150150071	150150071	150150091
4	Adaptor 2P	161430511	161430511	161430511	161430511	161430521	<b>161452891</b>	<b>161452881</b>	<b>161452881</b>	<b>161452881</b>	161452841
	Adaptor 4P			161430521	161430521	161430511	161452881	161452881		161452881	161452841
5	Wear ring	168601500	168601500	168601500	168601500	168601500	168601500	168601500	168601511	168601511	168601511
6	Back wear ring				465020201	465020201	465020201	465020201	465020201	465020201	465020201
9**	Motor 1 ~, 2P	13278H00F	13282H00F	50004HH00							
	Motor 3 ~,2P	13274R00F	13278R00F	13282R00F	50002RH00	50008VN00	50013VH00	50017VH00	50018VH00	50019VH00	50024VP00
	Motor 3 ~, 4P					13275R00F	13279R00J	50005RS00		50006RS00	50010RT00
9A**	Motor 3 ~, 4P			13258R00L	13262R00L						

Seal Housing disc = disc + wear rings

\* Recommended spare parts - Parti di ricambio consigliate

\* Pièces détachées conseillées - Empfohlene Ersatzteile

\*\* Motor spare parts: see motor lists - Parti di ricambio motore: vedi liste motore

\*\* Pièces détachées Moteur : voir listes moteur - Motor-Ersatzteile: gem. Motorlisten

FCE40-100\_5\_P\_Feb08\_EdC

## FCEM 65/P - FCE 65/P - FCE4 65/P

ELP 1 ~, 2P, 50	65-125/22/P									
	101202070									
ELP 3 ~, 2P, 50	65-125/22	65-125/30/P	65-125/40/P	65-160/55/P	65-160/75/P	65-200/92/P	65-200/110/P	65-250/150/P	65-250/185/P	65-250/220/P
	107470280	101200290	101200300	101200310	101200320	101200330	101200340	101200350	101200360	101200370
kW->	<b>2,2</b>	<b>3,0</b>	<b>4,0</b>	<b>5,5</b>	<b>7,5</b>	<b>9,2</b>	<b>11,0</b>	<b>15,0</b>	<b>18,5</b>	<b>22,0</b>
ELP3~, 4P, 50		65-125/03	65-125/05	65-160/07	65-160/11/P		65-200/15/P		65-250/22/P	65-250/30/P
		107470720	107470730	107470740	101205320		101205340		101205360	101205370
kW->		<b>0,37</b>	<b>0,55</b>	<b>0,75</b>	<b>1,1</b>		<b>1,5</b>		<b>2,2</b>	<b>3,0</b>

Kit		Dia. - Ø									
		119	130	139	158	174	197	209	224	237	250
2*	Impeller 2P	KL04ABS	KL04ABT	KL04ABU	KL04ABV	KL04ABW	KL04ABX	KL04ABY	KL04ABZ	KL04AB0	KL04AB1
	Impeller 4P		KL04ABT	KL04ABU	KL04ABV	KL04ABW		KL04ABY		KL04AB0	KL04AB1

7*	Material -->	<b>VBEGG</b>	<b>Q1Q1EGG</b>	<b>VBVGG</b>	<b>Q1Q1VGG</b>	2P->200/110	Std->Seal VBEGG - OR EPDM				
	Seal D22 Kit	KL01AAS	KL01ABZ	KL01AB2	KL01AB5	4P->200/15					
	Material -->	<b>VBEGG</b>	<b>Q1Q1EGG</b>	<b>VBVGG</b>	<b>Q1Q1VGG</b>	2P->250/220					
	Seal D28 Kit	KL01AAV	KL01AB0	KL01AB3	KL01AB6	4P->250/30					
8*	OR EPDM Kit	KL02AAH	<b>All Versions incl. 3 Dia-OR</b>								
	OR FPM Kit	KL02AAK	<b>All Versions incl. 3 Dia-OR</b>								
10	Imp. lock Kit M12	KL39AAA	<b>2P -&gt;200/110; 4P-&gt;200/15</b>								
	Imp. lock Kit M16	KL39AAB	<b>2P - 4P: All models 250</b>								
10A	Coupling 4P D:18	KL10AAG	<b>4P -&gt;125/03</b>								
11	Valves and Plugs	KL34AAA									

### Single Unit

1	Pump body	151350300	151350300	151350300	151350300	151350300	151350320	151350320	151350320	151350320	151350320
3	Seal-housing disc	160150221	160150221	160150221	150150051	150150051	150150071	150150071	150150091	150150091	150150091
4	Adaptor 2P	161453131	161453131	161453141	161453141	161453151	161452881	161452881	161452841	161452841	161452841
	Adaptor 4P		161453141	161453151	161453151	161453151		161452881		161452841	161452841
5	Wear ring		168601511	168601511	168601511	168601511	168601511	168601511	168601511	168601511	168601511
6	Back wear ring				465020201	465020201	465020201	465020201	465020201	465020201	465020201
9**	Motor 1 ~, 2P	50004HH00									
	Motor 3 ~, 2P	13282R00F	50002RH00	50008VN00	50013VH00	50017VH00	50018VH00	50019VH00	50024VP00	50025VP00	50026VP00
	Motor 3 ~, 4P			13275R00J	13279R00J	50005RS00		50006RS00		50010RT00	50011RT00
9A**	Motor 3 ~, 4P		13262R00L								

Seal Housing disc = disc + wear rings

\* Recommended spare parts - Parti di ricambio consigliate

\* Pièces détachées conseillées - Empfohlene Ersatzteile

\*\* Motor spare parts: see motor lists - Parti di ricambio motore: vedi liste motore

\*\* Pièces détachées Moteur : voir listes moteur - Motor-Ersatzteile: gem. Motorlisten

FCE40-100\_5\_P\_Feb08\_EdC

## FCE 80/P - FCE4 80/P

ELP. 3~, 2P	80-125/30/P	80-125/40/P	80-125/55/P	80-160/75/P	80-200/110/P	80-200/150/P	80-200/185/P	80-200/220/P		
	101200400	101200410	101200420	101200440	101200480	101200490	101200500	101200510		
kw ->	<b>3,0</b>	<b>4,0</b>	<b>5,5</b>	<b>7,5</b>	<b>11,0</b>	<b>15,0</b>	<b>18,5</b>	<b>22,0</b>		
ELP. 3~, 4P			80-125/07	80-125/11/P	80-200/15/P		80-200/22/P	80-200/30/P	80-250/40/P	80-250/55/P
			107470760	101205420	101205480		101205490	101205500	101205520	101205530
kw ->			<b>0,75</b>	<b>1,1</b>	<b>1,5</b>		<b>2,2</b>	<b>3,0</b>	<b>4,0</b>	<b>5,5</b>

<b>Kit</b>	Dia. - Ø	113	119	129	139	168 - 177	187	198	210	241	258
2*	Impeller 2P	KL04AC8	KL04AB2	KL04AB3	KL04AB4	KL04AB6	KL04AB8	KL04AB9	KL04ACA		
	Impeller 4P			KL04AB3	KL04AB4	KL04ALE		KL04AB9	KL04ACA	KL04ALA	KL04ALB

7*	Material -->	<b>VBEGG</b>	<b>Q1Q1EGG</b>	<b>VBVGG</b>	<b>Q1Q1VGG</b>	2P->160/75	Std->Seal VBEGG - OR EPDM
	Seal D22 Kit	KL01AAS	KL01ABZ	KL01AB2	KL01AB5	4P -> 125/11	
Material -->	<b>VBEGG</b>	<b>Q1Q1EGG</b>	<b>VBVGG</b>	<b>Q1Q1VGG</b>	2P->200/220		
Seal D28 Kit	KL01AAV	KL01AB0	KL01AB3	KL01AB6	4P-> 250/55		
8*	OR EPDM Kit	KL02AAH	<b>All Versions incl. 3 Dia - OR .</b>				
	OR FPM Kit	KL02AAK	<b>All Versions incl. 3 Dia - OR .</b>				
10	Imp.lock kit M12	KL39AAA	<b>2P-&gt;160/75; 4P-&gt;125/11</b>				
	Imp.lock kit M16	KL39AAB	<b>2P-&gt;200/220; 4P-&gt;250/55</b>				
11	Valves and Plugs	KL34AAA					

### Single Unit, 2P

1	Pump body	151350340	151350340	151350340	151350340	151350360	151350360	151350360		
3	Seal-housing disc	160150221	160150221	160150221	160150221	150150081	150150081	150150081		
4	Adaptor	161453131	161453141	161453141	161453151	161452881	161452841	161452841		
5	Wear ring	168601521	168601521	168601521	168601521	168601580	168601580	168601580		
6	Back wear ring					168601270	168601270	168601270		
9**	Motor 3 ~, 2 P	50002RH00	50008VN00	50013VH00	50017VH00	50019VP00	50024VP00	50025VP00	50026VP00	

### Single Unit, 4P

1	Pump body			151350340	151350340	151350360		151350360	151350360	151350360	151350360
3	Seal-housing			160150221	150150071	150150081		150150081	150150081	150150081	150150081
4	Adaptor			161453151	161453151	161452881		161452841	161452841	161452841	161452881
5	Wear ring			168601521	168601521	168601580		168601580	168601580	168601580	168601580
6	Back wear ring					168601270		168601270	168601270	168601270	168601270
9**	Motor 3 ~, 4P			13279R00J	50005RS00	50006RT00		50010RT00	50011RT00	50015VT00	50020VP00

Seal Housing disc = disc + wear rings

\* Recommended spare parts - Parti di ricambio consigliate

\* Pièces détachées conseillées - Empfohlene Ersatzteile

\*\* Motor spare parts: see motor lists - Parti di ricambio motore: vedi liste motore

\*\* Pièces détachées Moteur : voir listes moteur - Motor-Ersatzteile: gem. Motorlisten

## FCE 100/P - FCE4 100/P

ELP 3 ~, 2P, 50 kW ->		100-160/110/P	100-200/185/P	100-200/220/P			
		101200560	101200600	101200610			
		<b>11,0</b>	<b>18,5</b>	<b>22,0</b>			
ELP 3 ~, 4P, 50 kW ->	100-160/15/P		100-200/22/P	100-200/30/P	100-250/40/P	100-250/55/P	100-250/75/P
	101205560		101205580	101205590	101205620	101205630	101205640
		<b>1,5</b>	<b>2,2</b>	<b>3,0</b>	<b>4,0</b>	<b>5,5</b>	<b>7,5</b>

Kit		Dia. - Ø	160	152	173	189	217	238	256
2*	Impeller, 2P			KL04AK6	KL04AK1	KL04AK2			
	Impeller, 4P		KL04AK0		KL04AK1	KL04AK2	KL04AK4	KL04AK5	KL04ALD

7*	Material -->	<b>VBEGG</b>	<b>Q1Q1EGG</b>	<b>VBVGG</b>	<b>Q1Q1VGG</b>	<b>2P &amp; 4P-&gt;250/40</b>	Std->Seal VBEGG - OR EPDM
	Seal D28 kit	KL01AAV	KL01AB0	KL01AB3	KL01AB6		
	Material -->	<b>VBEGG</b>	<b>Q1Q1EGG</b>	<b>VBVGG</b>	<b>Q1Q1VGG</b>	<b>4P-&gt;250/75</b>	
	Seal D33 kit	KL01ABV	KL01AB1	KL01AB4	KL01AB7		
8*	OR EPDM Kit	KL02AAH	<b>All Versions incl. 3 Dia - OR</b>				
	OR FPM Kit	KL02AAK	<b>All Versions incl. 3 Dia - OR</b>				
10	Imp. lock Kit M16	KL39AAB	<b>2P; 4P-&gt;250/40</b>				
	Imp. lock Kit M20	KL39AAC	<b>4P-&gt;250/75</b>				
11	Valves and plugs	KL34AAA					

### Single Unit

1	Pump body		151350380	151350400	151350400			
			151350380	151350400	151350400	151350400	151350400	151350400
3	Seal-housing disc		150150061	150150081	150150081			
			150150061	150150081	150150081	150150081	150150101	150150101
4	Adaptor 2P		161453151	161452841	161452841			
			161453151	161452841	161452841	161452841	161452881	161452881
5	Wear ring		168601270	168601270	168601270			
			168601270	168601270	168601270	168601270	168601270	168601270
6	Back wear ring		168601270	168601270	168601270			
			168601270	168601270	168601270	168601270	168601270	168601270
9**	Motor 3 ~, 2P		50019VP00	50025VP00	50026VP00			
			50006RT00	50010RT00	50011RT00	50015VT00	50020VJ00	50021VJ00

Seal Housing disc = disc + wear rings

\* Recommended spare parts - Parti di ricambio consigliate

\* Pièces détachées conseillées - Empfohlene Ersatzteile

\*\* Motor spare parts: see motor lists - Parti di ricambio motore: vedi liste motore

\*\* Pièces détachées Moteur : voir listes moteur - Motor-Ersatzteile: gem. Motorlisten

FCE40-100\_5\_P\_Feb08\_EdC



FCBE/P, Impeller (Item 2) - Motor (Item 9) Part Number

80	<b>80-200/110/P</b>	<b>80-200/150/P</b>	<b>80-200/185/P</b>	<b>80-200/220/P</b>			
	101445000	101445010	101445020	101445030			
	11 kW	15 kW	18,5 kW	22 kW			
	2-> 160720510	160720520	160720500	160720540			
9->	50019VP00	50024VP00	50025VP00	50026VP00			
	<b>480-200/15/P</b>			<b>480-200/22/P</b>	<b>480-200/30/P</b>	<b>480-250/40/P</b>	<b>480-250/55/P</b>
	101446000			101446010	101446020	101446030	101446040
	1,5 kW			2,2 kW	3,0 Kw	4,0 kW	5,5 kW
2->	160720500			160720500	160720540	160720590	160720600
9->	50006RT00			50010RT00	50011RT00	50015VT00	50020VP00
100	<b>100-160/110/P</b>	<b>100-200/185/P</b>	<b>100-200/220/P</b>				
	101445040	101445050	101445060				
	11 kW	18.5 kW	22 kW				
	2-> 160720680	160720720	160720780				
9->	50019VP00	50025VP00	50026VP00				
	<b>4100-160/15/P</b>	<b>4100-200/22/P</b>	<b>4100-200/30/P</b>	<b>4100-250/40/P</b>	<b>4100-250/55/P</b>	<b>4100-250/75/P</b>	
	101446050	101446060	101446070	101446080	101446090	101446100	
	1,5 kW	2,2 kW	3 kW	4 kW	5,5 kW	7,5 kW	
2->	160720700	160720720	160720780	160720850	160720900	160720910	
9->	50006RT00	50010RT00	50011RT00	50015VT00	50020VJ00	50021VJ00	

xylem