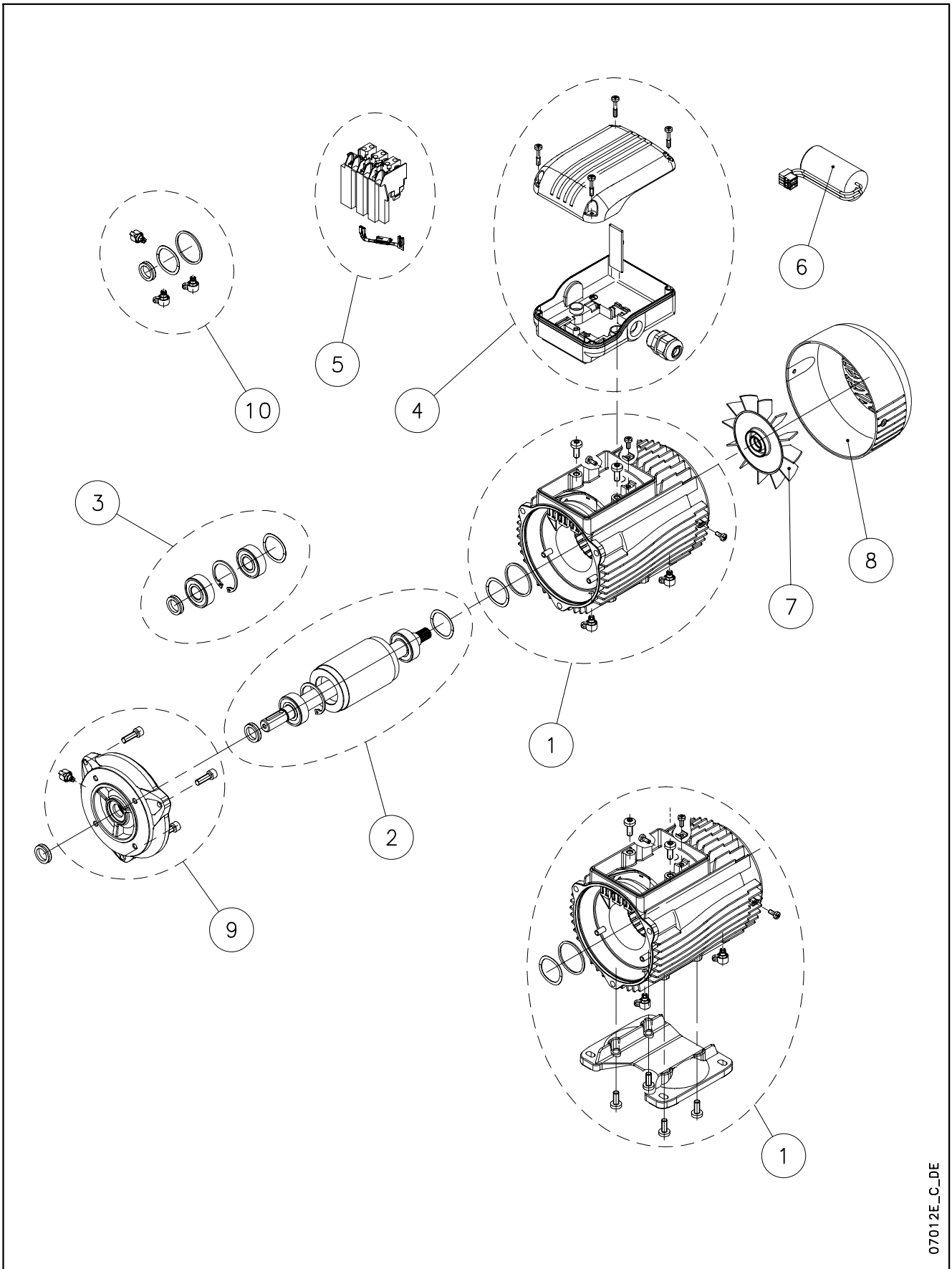


SM MOTOR



07012E_C_DE

Lowara, Flygt and Vogel Pumpen are a trademark of Xylem Inc. or one of its subsidiaries.
Goulds is a registered trademark of Goulds Pumps, Inc. and is used under license.

N.	Descrizione it	Description en	Description fr	Beschreibung de	Descripción es	Descrição pt
1	Cassa statore	Stator housing	Carcasse stator	Statorgehäuse	Carcasa estator	Carcaça estator
	Cassa statore con piedi motore	Stator housing with motor feet	Carcasse stator avec pieds moteur	Statorgehäuse mit motorstützfuss	Carcasa estator - motor pies	Carcaça estator - motor pés
2	Albero rotore completo	Shaft rotor complete	Arbre rotor complet	Rotorwelle Komplete	Eje rotor complete	Eixo rotor completo
3	Cuscinetti - Anelli	Bearings - Rings	Roulements - Anneaux	Lager - Ringen	Cojinetes - Anillos	Rolamentos - Anéis
4	Scatola morsettiera	Terminal box	Boite a bornier	Klemmenkasten	Caja de bornes	Caixa de terminais
5	Morsettiera (Plug-in)	Terminal block (Plug in)	Bornier enfichable (Plug in)	Steck-Klemmkasten (Plug in)	Place de bornes (Plug in)	Terminais (Plug in)
6	Condensatore	Capacitor	Condensateur	Kondensator	Condensador	Condensador
7	Ventola	Fan	Ventilateur	Lüfterrad	Ventilador	Ventilador
8	Copriventola	Fan cover	Couvercle de ventilateur	Lüfterradhaube	Tapa ventilador	Cobertura do ventilador
9	Scudo anteriore DE	Front shield DE	Flasque avant DE	Vorderzungen Schild DE	Escudo anterior NDE	Proteção anterior DE
10	Anelli tenuta - Tappi	Oil seals - Plugs	Bagues étanchéité-Bouchons	Abdichtungsringen-Stopfen	Anillos estanqueidad- Tapones	Selos anéis -Tampões
N.	Beschrijving nl	Περιγραφή el	Açıklama tr	Kuvaus fi	Описание ru	Opis pl
1	Statorhuis	Κάσα στάτη	Statör karteri	Staattori kotelo	Корпус статора	Stator
	Statorhuis - Motor voeten	Κάσα στάτη - Πόδια κινητήρα	Statör karteri - Makina ayak	Staattori kotelo - Moottori jalat	Корпус статора - двигатель стопы	Stator - Stopki silnika
2	Rotor as compleet	Άξονας στροφεία πλήρης	Döner mili tam	Aksel roottori komplet	ротор дrevko законченный	Wałek kompletny (z rotorem)
3	Lagers - Ringen	Κουζινέτα - δαχτυλίδια	Rulmanlar - Ringes	Laakeri - Rengas	Подшипник - кольцами	Łożyska – pierścienie
4	Kabelkast	Πίνακες τερματικών	Terminal Kutu	Terminaalin laatikko	соединители коробка	Skrzynka zaciskowa
5	Klemmenbord (Plug in)	Τερματικές μονάδες (Plug in)	Kaide bacaklar Plug in	Liitinalusta Plug in	основа булавка Plug in	Podstawa ze sworzeniami Plug in
6	Condensator	πυκνωτ	Kondansatör	Kondensaattori	конденсатор	Kondensator
7	Ventilator	Ανεμιστήρας	Vantilatör	Tuuletin	вентилятор	Wentylator
8	Ventilatorkap	Κάλυμμα ανεμιστήρων	Vantilatör kapağı	Tuuletinkotelo	вентилятор крышка	Ośłona wentylatora
9	Voorste Motorhuis DE	Εμπρός ασπίδα DE	Ön koruma DE	Etu-kilpi DE	Отдел щит DE	Przednie tarcza DE
10	Zegel ringen - Stekkers	Στεγανοποιητικοί δακτύλιοι - Πώματα	Fok ringes - Tikaç	Sinetin renkaasta - Pistokkeiden	нефть тюлень -кольцо	Uszczelka olejowa – zatyczki

SM Vertical Pump FCE / FHE / SHE 2 Pole 0,75 - 1,5 kW

SM -->	90RB14S2/307	90RB14S2/311	90RB14S2/315
3 ~, 230-400V ->	107234040	107234050	107234060
3 ~, 400-690V ->	107234042	TbD	107234062
kW ->	0,75	1,1	1,5
	SM IE3		

Kit

2	Shaft rotor complete	KL09ACK	KL09ACL	KL09ACM
3*	Bearings - Rings	KL11AAV	KL11AAV	KL11AAV
	Bearings size	6204/6205HE	6204/6205HE	6204/6205HE
4	Terminal box	KL30AAA	KL30AAA	KL30AAA
6	Capacitor 1~			
10	Oil seals - Plugs	KL03ABP	KL03ABP	KL03ABP

Single Unit

1	Stator w/terminal box	KL25ADD	KL25ADF	KL25ADH
	Stator w/terminal box	KL25AD2	KL25AD2	KL25AD4
5	Plug-in	158160280	158160280	158160280
	Plug-in Mot/Protection 1~			
7	Fan	140760160	140760160	140760160
8	Fan cover	KL29AAE	KL29AAE	KL29AAE
9	Front shield DE [B14	KL20AAU	KL20AAU	KL20AAW
-	Motor feet	-	-	-
-	Condensate drain plug	168460420	168460420	168460420

Note. Motors with International Energy Efficiency Class IE3 according CE Standard 640/2009

* Recommended spare parts - Parti di ricambio consigliate
* Pièces détachées conseillées - Empfohlene Ersatzteile

xylem

