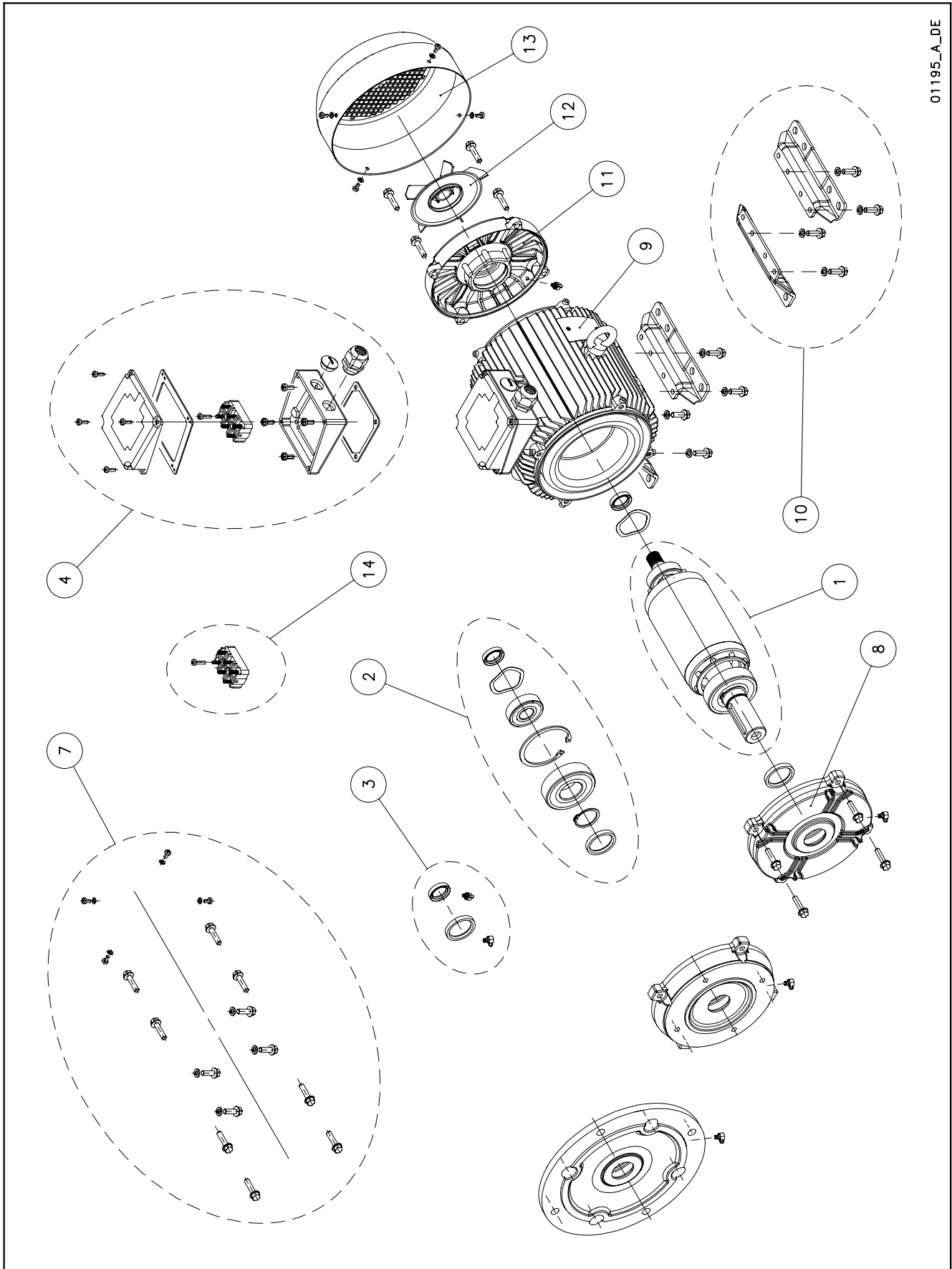


PLM 100÷160



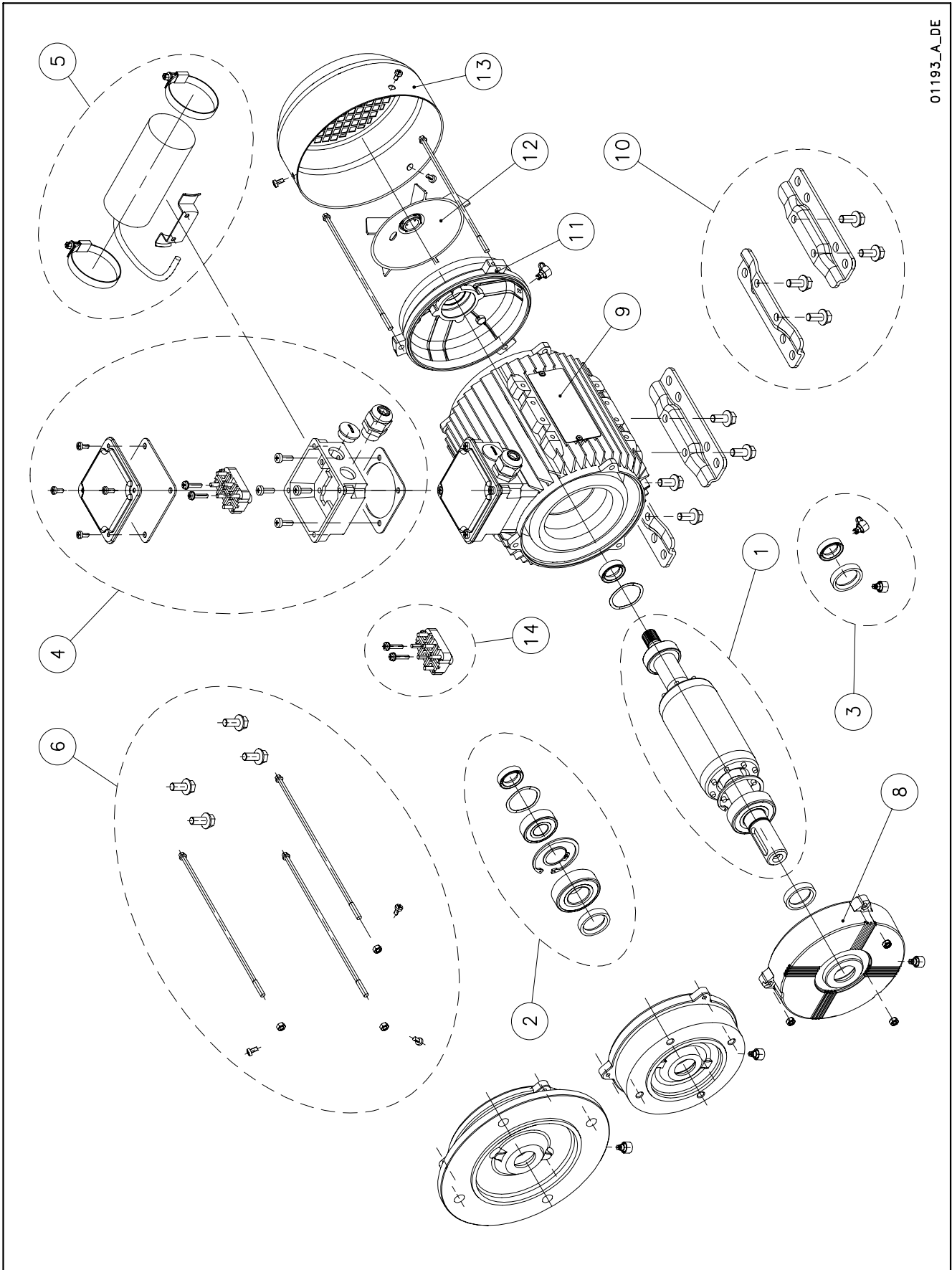
01195_A_DE

Lowara, Vogel Pumpen are trademarks of Xylem Inc. or one of its subsidiaries. Goulds is a registered trademark of Goulds Pumps, Inc. and is used under license.

N.	Descrizione it	Description en	Description fr	Beschreibung de	Descripción es	Descrição pt
1	Albero rotore completo	Shaft rotor complete	Arbre rotor au complet	Rotorwelle Komplete	Eje rotor complete	Eixo rotor completo
2	Cuscinetti - Anelli	Bearings - Rings	Roulements - Anneaux	Lagers - Rings	Cojinetes - Anillos	Rolamentos - Anéis
3	Anelli tenuta - Tappi	Oil seals - Plugs	Bagues étanchéité-Bouchons	Abdichtungsringen-Schrauben	Anillos estanqueidad- Tapones	Selos anéis -Tampões
4	Scatola morsettiere	Terminal box	Boite a bornier	Klemmenkasten	Caja de bornes	Quadro de grampos
5	Condensatore	Capacitor	Condensateur	Kondensator	Condensador	Condensador
6	Tiranti PLM90	Tie rods PLM90	Tiges PLM90	Spannstangen PLM90	Tirantes PLM90	Tirantes PLM90
7	Viteria	Screws	Vis	Schrauben	Tornillos	Parafusos
8	Scudo anteriore DE	Front shield DE	Flasque antérieur	Vorderer kasten	Escudo anterior	Escudo dianteiro
9	Cassa statore - scatola morsettiere	Stator housing - terminal box	Carcasse stator - boite a bornier	Statorgehäuse - Klemmenkastendeckel	Carcasa estator - Caja de bornes	Caixa estator - Quadro de grampos
10	Piedi motore	Motor feet	Piedes moteur	Motorstützfuss	Motor pies	Motor pés
11	Scudo posteriore NDE	Rear shield NDE	Flasque arriere	Hinteren Schild	Escudo posterior	Escudo posterior
12	Ventola	Fan	Ventilateur	Lüfterrad	Ventilador	Ventoinha
13	Copriventola	Fan cover	Couvercle de ventilateur	Lüfterradhaube	Tapa ventilador	Cobertura da ventoinha
14	Basetta con perni	Base with pins	Bornier avec fiches	Klemmenbrett mit zapfen	Soporte de pernos	Bloco de grampos
N.	Beschrijving nl	Περιγραφή el	Açıklama tr	Kuvaus fi	Описание ru	Opis pl
1	Rotor as compleet	Άξονας στροφέα πλήρης	Komple rotor mili	Täydellinen roottorin akseli	Укомплектованный вал ротора	Wałek kompletny (z rotorem)
2	Lagers - Ringen	Κουζινέτα - δαχτυλίδια	Rulmanlar - Halkalar	Laakerit - Renkaat	Подшипники - Кольца	Łożyska - pierścienie
3	Zegel ringen - Stekkers	Στεγανοποιητικοί δακτύλιοι - Πώματα	Yağ keçeleri - Tapalar	Tiivisterenkaat - Tulpat	Уплотнительные прокладки - пробки	Uszczelka olejowa - zatyczki
4	Kabelkast	Κιβώτιο συστοιχίας ακροδεκτών	Terminal kutusu	Liitinalusta	Крышка клеммника	Skrzynka zaciskowa
5	Condensator	Πυκνωτής	Kondansatör	Kondensaattori	Конденсатор	Kondensator
6	Trekstangen PLM90	Ράβδοι δεσμών PLM90	Çekme çubukları PLM90	Vetotangot PLM90	Тяги PLM90	Szpilki gwintowane PLM90
7	Schroeven	Βίδες	Vidalar	Ruuvit	Винты	Śruby
8	Voorzijde Motorhuis	Μπροστινός προφυλακτήρας NDE	Ön koruma	Etusuojus DE	Передний щит Прив.сторона	Przednia tarcza
9	Statorhuis - Klemmenbord	Κάσα στάτη - κιβώτιο συστοιχίας ακροδεκτών	Stator yuvası - Terminal kutusu	Staattorin kotelo - liitinalusta	Корпус статора - коробка клеммника	Obudowa silnika - stator
10	Motor voeten	Πόδια κινητήρα	Motor ayakları	Moottorin jalat	Ножки двигателя	Stopki silnika
11	Achtergedeelte Motorhuis	Πίσω προφυλακτήρας NDE	Arka koruma	Takasuojaus NDE	Задний щит Неприв. Сторона	Tylna tarcza
12	Ventilator	Ανεμιστήρας	Vantilatör	Tuuletin	Вентилятор	Wentylator
13	Ventilatorkap	Κάλυμμα ανεμιστήρων	Vantilatör kapağı	Tuulettimen suojus	Крышка вентилятора	Ośłona wentylatora
14	Klemmenbord	Βάση με πείρους	Pimli kaide	Perusta ja tapit	Основание со штырями	Podstawa ze sworzeniami

PLM 90

01193_A_DE



Lowara, Vogel Pumpen are trademarks of Xylem Inc. or one of its subsidiaries.
Goulds is a registered trademark of Goulds Pumps, Inc. and is used under license.

N.	Descrizione it	Description en	Description fr	Beschreibung de	Descripción es	Descrição pt
1	Albero rotore completo	Shaft rotor complete	Arbre rotor au complet	Rotorwelle Komplete	Eje rotor complete	Eixo rotor completo
2	Cuscinetti - Anelli	Bearings - Rings	Roulements - Anneaux	Lagers - Rings	Cojinetes - Anillos	Rolamentos - Anéis
3	Anelli tenuta - Tappi	Oil seals - Plugs	Bagues étanchéité-Bouchons	Abdichtungsringen-Schrauben	Anillos estanqueidad- Tapones	Selos anéis -Tampões
4	Scatola morsettiera	Terminal box	Boite a bornier	Klemmenkasten	Caja de bornes	Quadro de grampos
5	Condensatore	Capacitor	Condensateur	Kondensator	Condensador	Condensador
6	Tiranti PLM90	Tie rods PLM90	Tiges PLM90	Spannstangen PLM90	Tirantes PLM90	Tirantes PLM90
7	Viteria	Screws	Vis	Schrauben	Tornillos	Parafusos
8	Scudo anteriore DE	Front shield DE	Flasque antérieur	Vorderer kasten	Escudo anterior	Escudo dianteiro
9	Cassa statore - scatola morsettiera	Stator housing - terminal box	Carcasse stator - boite a bornier	Statorgehäuse - Klemmenkastendeckel	Carcasa estator - Caja de bornes	Caixa estator - Quadro de grampos
10	Piedi motore	Motor feet	Piedes moteur	Motorstützfuss	Motor pies	Motor pés
11	Scudo posteriore NDE	Rear shield NDE	Flasque arriere	Hinteren Schild	Escudo posterior	Escudo posterior
12	Ventola	Fan	Ventilateur	Lüfterrad	Ventilador	Ventoinha
13	Copriventola	Fan cover	Couvercle de ventilateur	Lüfterradhaube	Tapa ventilador	Cobertura da ventoinha
14	Basetta con perni	Base with pins	Bornier avec fiches	Klemmenbrett mit zapfen	Soporte de pernos	Bloco de grampos
N.	Beschrijving nl	Περιγραφή el	Açıklama tr	Kuvaus fi	Описание ru	Opis pl
1	Rotor as compleet	Άξονας στροφέα πλήρης	Komple rotor mili	Täydellinen roottorin akseli	Укомплектованный вал ротора	Wałek kompletny (z rotorem)
2	Lagers - Ringen	Κουζινέτα - δαχτυλίδια	Rulmanlar - Halkalar	Laakerit - Renkaat	Подшипники - Кольца	Łożyska - pierścienie
3	Zegel ringen - Stekkers	Στεγανοποιητικοί δακτύλιοι - Πώματα	Yağ keçeleri - Tapalar	Tiivisterenkaat - Tulpat	Уплотнительные прокладки - пробки	Uszczelka olejowa - zatyczki
4	Kabelkast	Κιβώτιο συστοιχίας ακροδεκτών	Terminal kutusu	Liitinalusta	Крышка клеммника	Skrzynka zaciskowa
5	Condensator	Πυκνωτής	Kondansatör	Kondensaattori	Конденсатор	Kondensator
6	Trekstangen PLM90	Ράβδοι δεσμών PLM90	Çekme çubukları PLM90	Vetotangot PLM90	Тяги PLM90	Szpilki gwintowane PLM90
7	Schroeven	Βίδες	Vidalar	Ruuvit	Винты	Śruby
8	Voorzijde Motorhuis	Μπροστινός προφυλακτήρας NDE	Ön koruma	Etusuojus DE	Передний щит Прив.сторона	Przednia tarcza
9	Statorhuis - Klemmenbord	Κάσα στάτη - κιβώτιο συστοιχίας ακροδεκτών	Stator yuvası - Terminal kutusu	Staattorin kotelo - liitinalusta	Корпус статора - коробка клеммника	Obudowa silnika - stator
10	Motor voeten	Πόδια κινητήρα	Motor ayakları	Moottorin jalat	Ножки двигателя	Stopki silnika
11	Achtergedeelte Motorhuis	Πίσω προφυλακτήρας NDE	Arka koruma	Takasuojaus NDE	Задний щит Неприв. Сторона	Tylna tarcza
12	Ventilator	Ανεμιστήρας	Vantilatör	Tuuletin	Вентилятор	Wentylator
13	Ventilatorkap	Κάλυμμα ανεμιστήρων	Vantilatör kapağı	Tuulettimen suojus	Крышка вентилятора	Ośłona wentylatora
14	Klemmenbord	Βάση με πείρους	Pimli kaide	Perusta ja tapit	Основание со штырями	Podstawa ze sworzeniami

PLM Motor Enhanced Shaft FHE / SHE / FCE 2 Pole 1,5 - 3,0 kW

PLM --->
1~, 220/240V
3~, 230/400V
kW ->

90B14S2/315	90B14S2/322	90B14S2/330	90B14S2/1225
-	-	-	50004HH00
50000RN00	50001RN00	50002RH00	
1,5	2,2	3,0	2,2
PLM IE2			PLM

Kit

1 Shaft rotor complete	5KL09ACU	5KL09ACV	5KL09AAW	5KL09AAV
2* Bearings - Rings	5KL11AAA	5KL11AAA	5KL11AAS	5KL11AAA
	6203/6205	6203/6205	6203/6205 HE	6203/6205
4 Terminal box	5KL30AAE	5KL30AAE	5KL30AAE	5KL30AAF
3 Oil seals - Plugs	5KL03AAA	5KL03AAA	5KL03AAA	5KL03AAA
7 Screws PLM100-160	-	-	-	-
6 Tie rods PLM90	5KL22AAA	5KL22AAA	5KL22AAA	5KL22AAA
5 Capacitor 1~	-	-	-	5828AAB

Single Unit

8 Front shield DE	5KL20AAG	5KL20AAG	5KL20AAG	5KL20AAG
9 Stator terminal box	5KL25AAA	5KL25AAB	5KL25AAE	5KL25AAG
11 Rear shield NDE	5KL20AAZ	5KL20AAZ	5KL20AAZ	5KL20AAZ
12 Fan	540760010	540760010	540760010	540760010
13 Fan cover	5KL29AAA	5KL29AAA	5KL29AAA	5KL29AAA
14 Base with pins	5830AAA	5830AAA	5830AAA	5830AAA
10 Motor feet	-	-	-	-

Note. Motors with International Energy Efficiency Class IE2 according CE Standard 640/2009

ABOUT SPARE PARTS for PLM MOTORS in 2FHE EIp.

PLS REFER to specific 2FHE 32 2-4 Pole Part TABLES.

* Recommended spare parts - Parti di ricambio consigliate

* Pièces détachées conseillées - Empfohlene Ersatzteile

PLM Motor Enhanced Shaft FHE / SHE 2 Pole 4,0 - 22,0 kW

PLM ---> 3~, 400/690V	112RB14S2/340	112B14S2/355	132B14S2/375	132B14S2/392	132B14S2/3110	132B14S3/3110	160B34S3/3150	160B34S3/3185
	50008VN00	50013VH00	50017VH00	50018VH00	50019VH00	50019VP00	50024VR00	50025VR00
kW ->	160B34S3/322							
	50026VR00							
	4,0	5,5	7,5	9,2	11,0	11,00	15,0	18,5
	22,0							
	PLM IE2							
	PLM IE2							

Kit

1	Shaft rotor complete	5KL09AA4	5KL09ABF	5KL09ABP	5KL09ABQ	5KL09ABS	5KL09ABT	5KL09AB6	5KL09AB8
		5KL09ACA							
2*	Bearings - Rings	5KL11AAE	5KL11AAG	5KL11AAM	5KL11AAM	5KL11AAW	5KL11AAM	5KL11AAQ	5KL11AAQ
		6205/6206	6206/6306	6305/6308	6305/6308	6305/6308 HE	6305/6308	6307/6310	6307/6310
		5KL11AAQ							
4	Terminal box	6307/6310							
		5KL30AAG	5KL30AAL	5KL30AAN	5KL30AAN	5KL30AAN	5KL30AAN	5KL30AAP	5KL30AAQ
5	Capacitor 1~	5KL30AAQ							
3	Oil seals - Plugs	5KL03AAB	PLM 100-112						
		5KL03AAC	PLM 132-160						
7	Screws PLM100-160	5KL40AAA							
6	Tie rods PLM90	-							

Single Unit

8	Front shield DE	5KL20AAK	5KL20AAU	5KL20AAM	5KL20AAM	5KL20AAM	5KL20AAM	5KL20AAN	5KL20AAN
		5KL20AAN							
9	Stator terminal box	5KL25AAP	5KL25AAW	5KL25AA0	5KL25ABF	5KL25AA2	5KL25AA2	5KL25AA9	5KL25ABB
		5KL25ABD							
11	Rear shield NDE	5KL20AA0	PLM 112R						
		5KL20AA1	PLM 112						
		5KL20AA3	PLM 132						
		5KL20AA4	PLM 160						
12	Fan	540760030	PLM 112R-112						
		540760040	PLM 132-160						
13	Fan cover	5KL29AAB	PLM 112R						
		5KL29AAD	PLM 112						
		5KL29AAF	PLM 132						
		5KL29AAG	PLM 160						
14	Base with pins	5830AAA	-> 4,0 kW		PLM 90 - 100				
		5830AAB	5,5 - 11 kW		PLM 112 - 132				
		5830AAC	15 - 22 kW		PLM 160				
10	Motor feet	-	5,5 - 11 kW						
		5KL23AAE	15,0 - 22,0 kW		PLM 160				

Note. Motors with International Energy Efficiency Class IE2 according CE Standard 640/2009

ABOUT SPARE PARTS for PLM MOTORS in 2FHE Elp.
PLS REFER to specific 2FHE 32 2-4 Pole Part TABLES.

* Recommended spare parts - Parti di ricambio consigliate
* Pièces détachées conseillées - Empfohlene Ersatzteile

PLM Motor Enhanced Shaft FHE / SHE 2 Pole 2,2 - 22,0 kW

PLM --->	112RB14S2/340	112B14S2/355	132B14S2/375	132B14S2/392	132B14S2/3110	132B14S3/3110	160B14S3/3150	160B14S3/3185
	50008VN00	50013VH00	50017VH00	50018VH00	50019VH00	50019VP00	50024VP00	50025VP00
3~, 400/690V	160B14S3/322							
	50026VP00							
kW ->	4,0	5,5	7,5	9,2	11,0	11,00	15,0	18,5
	22,0							
	PLM IE2							
	PLM IE2							

Kit

1	Shaft rotor complete	5KL09AA4	5KL09ABF	5KL09ABP	5KL09ABQ	5KL09ABS	5KL09ABT	5KL09AB6	5KL09AB8
		5KL09ACA							
2*	Bearings - Rings	5KL11AAE	5KL11AAG	5KL11AAM	5KL11AAM	5KL11AAW	5KL11AAM	5KL11AAQ	5KL11AAQ
		6205/6206	6206/6306	6305/6308	6305/6308	6305/6308 HE	6305/6308	6307/6310	6307/6310
		5KL11AAQ							
4	Terminal box	6307/6310							
		5KL30AAG	5KL30AAL	5KL30AAN	5KL30AAN	5KL30AAN	5KL30AAN	5KL30AAP	5KL30AAQ
5	Capacitor 1~	5KL30AAQ							
3	Oil seals - Plugs	5KL03AAB	PLM 100-112						
		5KL03AAC	PLM 132-160						
7	Screws PLM100-160	5KL40AAA							
6	Tie rods PLM90	-							

Single Unit

8	Front shield DE	5KL20AAK	5KL20AAU	5KL20AAM	5KL20AAM	5KL20AAM	5KL20AAM	5KL20AAN	5KL20AAN
		5KL20AAN							
9	Stator terminal box	5KL25AAP	5KL25AAW	5KL25AA0	5KL25ABF	5KL25AA2	5KL25AA2	5KL25AA9	5KL25ABB
		5KL25ABD							
11	Rear shield NDE	5KL20AA0	PLM 112R						
		5KL20AA1	PLM 112						
		5KL20AA3	PLM 132						
		5KL20AA4	PLM 160						
12	Fan	540760030	PLM 112R-112						
		540760040	PLM 132-160						
13	Fan cover	5KL29AAB	PLM 112R						
		5KL29AAD	PLM 112						
		5KL29AAF	PLM 132						
		5KL29AAG	PLM 160						
14	Base with pins	5830AAA	-> 4,0 kW			PLM 90 - 100			
		5830AAB	5,5 - 11 kW			PLM 112 - 132			
		5830AAC	15 - 22 kW			PLM 160			
10	Motor feet	-	5,5 - 11 kW						
		-	15,0 - 22,0 kW			PLM 160			

Note. Motors with International Energy Efficiency Class IE2 according CE Standard 640/2009

ABOUT SPARE PARTS for PLM MOTORS in 2FHE Elp.
PLS REFER to specific 2FHE 32 2-4 Pole Part TABLES.

* Recommended spare parts - Parti di ricambio consigliate
* Pièces détachées conseillées - Empfohlene Ersatzteile

xylem