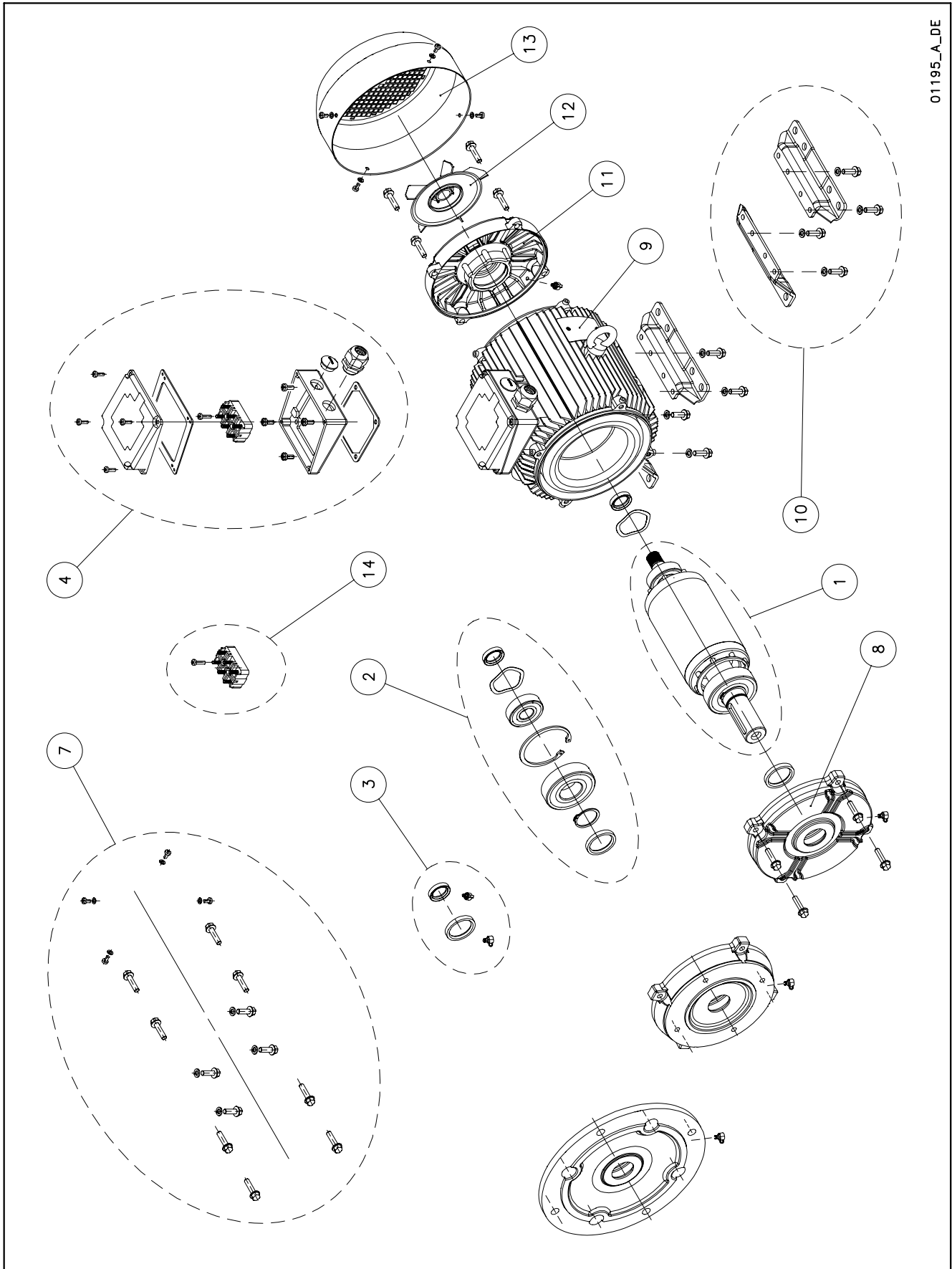


## PLM 100÷160



01195\_A\_DE

Lowara, Vogel Pumpen are trademarks of Xylem Inc. or one of its subsidiaries. Goulds is a registered trademark of Goulds Pumps, Inc. and is used under license.

N.	Descrizione it	Description en	Description fr	Beschreibung de	Descripción es	Descrição pt
1	Albero rotore completo	Shaft rotor complete	Arbre rotor au complet	Rotorwelle Komplete	Eje rotor complete	Eixo rotor completo
2	Cuscinetti - Anelli	Bearings - Rings	Roulements - Anneaux	Lagers - Rings	Cojinetes - Anillos	Rolamentos - Anéis
3	Anelli tenuta - Tappi	Oil seals - Plugs	Bagues étanchéité-Bouchons	Abdichtungsringen-Schrauben	Anillos estanqueidad- Tapones	Selos anéis -Tampões
4	Scatola morsettiera	Terminal box	Boite a bornier	Klemmenkasten	Caja de bornes	Quadro de grampos
5	Condensatore	Capacitor	Condensateur	Kondensator	Condensador	Condensador
6	Tiranti PLM90	Tie rods PLM90	Tiges PLM90	Spannstangen PLM90	Tirantes PLM90	Tirantes PLM90
7	Viteria	Screws	Vis	Schrauben	Tornillos	Parafusos
8	Scudo anteriore DE	Front shield DE	Flasque antérieur	Vorderer kasten	Escudo anterior	Escudo dianteiro
9	Cassa statore - scatola morsettiera	Stator housing - terminal box	Carcasse stator - boite a bornier	Statorgehäuse - Klemmenkastendeckel	Carcasa estator - Caja de bornes	Caixa estator - Quadro de grampos
10	Piedi motore	Motor feet	Piedes moteur	Motorstützfuss	Motor pies	Motor pés
11	Scudo posteriore NDE	Rear shield NDE	Flasque arriere	Hinteren Schild	Escudo posterior	Escudo posterior
12	Ventola	Fan	Ventilateur	Lüfterrad	Ventilador	Ventoinha
13	Copriventola	Fan cover	Couvercle de ventilateur	Lüfterradhaube	Tapa ventilador	Cobertura da ventoinha
14	Basetta con perni	Base with pins	Bornier avec fiches	Klemmenbrett mit zapfen	Soporte de pernos	Bloco de grampos
N.	Beschrijving nl	Περιγραφή el	Açıklama tr	Kuvaus fi	Описание ru	Opis pl
1	Rotor as compleet	Άξονας στροφέα πλήρης	Komple rotor mili	Täydellinen roottorin akseli	Укомплектованный вал ротора	Wałek kompletny (z rotorem)
2	Lagers - Ringen	Κουζινέτα - δαχτυλίδια	Rulmanlar - Halkalar	Laakerit - Renkaat	Подшипники - Кольца	Łożyska - pierścienie
3	Zegel ringen - Stekkers	Στεγανοποιητικοί δακτύλιοι - Πώματα	Yağ keçeleri - Tapalar	Tiivisterenkaat - Tulpat	Уплотнительные прокладки - пробки	Uszczelka olejowa - zatyczki
4	Kabelkast	Κιβώτιο συστοιχίας ακροδεκτών	Terminal kutusu	Liitinalusta	Крышка клеммника	Skrzynka zaciskowa
5	Condensator	Πυκνωτής	Kondansatör	Kondensaattori	Конденсатор	Kondensator
6	Trekstangen PLM90	Ράβδοι δεσμών PLM90	Çekme çubukları PLM90	Vetotangot PLM90	<b>Тяги PLM90</b>	Szpilki gwintowane PLM90
7	Schroeven	Βίδες	Vidalar	Ruuvit	Винты	Śruby
8	Voorzijde Motorhuis	Μπροστινός προφυλακτήρας NDE	Ön koruma	Etusuojus DE	Передний щит Прив.сторона	Przednia tarcza
9	Statorhuis - Klemmenbord	Κάσα στάτη - κιβώτιο συστοιχίας ακροδεκτών	Stator yuvası - Terminal kutusu	Staattorin kotelo - liitinalusta	Корпус статора - коробка клеммника	Obudowa silnika - stator
10	Motor voeten	Πόδια κινητήρα	Motor ayakları	Moottorin jalat	Ножки двигателя	Stopki silnika
11	Achtergedeelte Motorhuis	Πίσω προφυλακτήρας NDE	Arka koruma	Takasuojaus NDE	Задний щит Неприв. Сторона	Tylna tarcza
12	Ventilator	Ανεμιστήρας	Vantilatör	Tuuletin	Вентилятор	Wentylator
13	Ventilatorkap	Κάλυμμα ανεμιστήρων	Vantilatör kapağı	Tuulettimen suojus	Крышка вентилятора	Ośłona wentylatora
14	Klemmenbord	Βάση με πείρους	Pimli kaide	Perusta ja tapit	Основание со штырями	Podstawa ze sworzeniami

## PLM Enhanced Shaft Motor SHE / FHE / FCE 4 Pole 2,2 - 11 kW

PLM4 -->	100B5S3/322	100B5S3/330	112B5S3/340	132B14S3/355	132B14S4/355	132B14S4/375	160B34S4/3110
3 ~, 230-400V ->	50A10RT00	50A11RT00					
3 ~, 400/690V ->		50A11VT00	50A15VT00	50A20VP00	50A20VJ00	53A21VJ00	53A27VZ00
kW ->	2,2	3,0	4,0	5,5	5,5	7,5	11
	PLM IE3						

### Kit

1	Shaft rotor complete	5KL09AEK	5KL09AEL	5KL09AEM	5KL09AEN	5KL09AEP	5KL09AEQ	5KL09AER
2*	Bearings - Rings	5KL11AA0	5KL11AA0	5KL11AA0	5KL11AAW	5KL11AAW	5KL11AAW	5KL11AA4
	Bearings - Size	6206/6306 HE	6206/6306 HE	6206/6306 HE	6305/6308 HE	6305/6308 HE	6305/6308 HE	6308/6310 HE
4	Terminal box	5KL30AAK	5KL30AAK	5KL30AAM	5KL30AAN	5KL30AAN	5KL30AAN	5KL30AAP
3	Oil seals - Plugs	5KL03AAB	5KL03AAB					
				5KL03AAC	5KL03AAC	5KL03AAC	5KL03AAC	5KL03AAC
6	Tie rods PLM90	-						
7	Screws PLM100-160	5KL40AAA						
5	Capacitor	-						

### Single Unit

8	Front shield DE	5KL20AAS	5KL20AAS	5KL20AAS	5KL20AAM	5KL20AAM	5KL20AAM	5KL20AAN
9	Stator terminal box	5KL25ACQ	5KL25ACS					
			5KL25ACU	5KL25ACV	5KL25ACW	5KL25ACW	5KL25ACY	5KL25ACZ
11	Rear shield NDE	5KL20ABB	5KL20AA1	5KL20ABB	5KL20AA3	5KL20AA3	5KL20AA3	5KL20ABC
12	Fan	540760050	540760050	540760050	540760070	540760070	540760070	540760090
13	Fan cover	5KL29AAE	5KL29AAD	5KL29AAP	5KL29AAF	5KL29AAF	5KL29AAF	5KL29AAG
14	Base with pins	5830AAA	5830AAA					
				5830AAB	5830AAB	5830AAB	5830AAB	
								5830AAC
10	Motor feet	5KL23AAE	11,0 kW		PLM 160			

Note. Motors with International Energy Efficiency Class IE3 according CE Standard 640/2009

\* Recommended spare parts - Parti di ricambio consigliate

\* Pièces détachées conseillées - Empfohlene Ersatzteile

# xylem