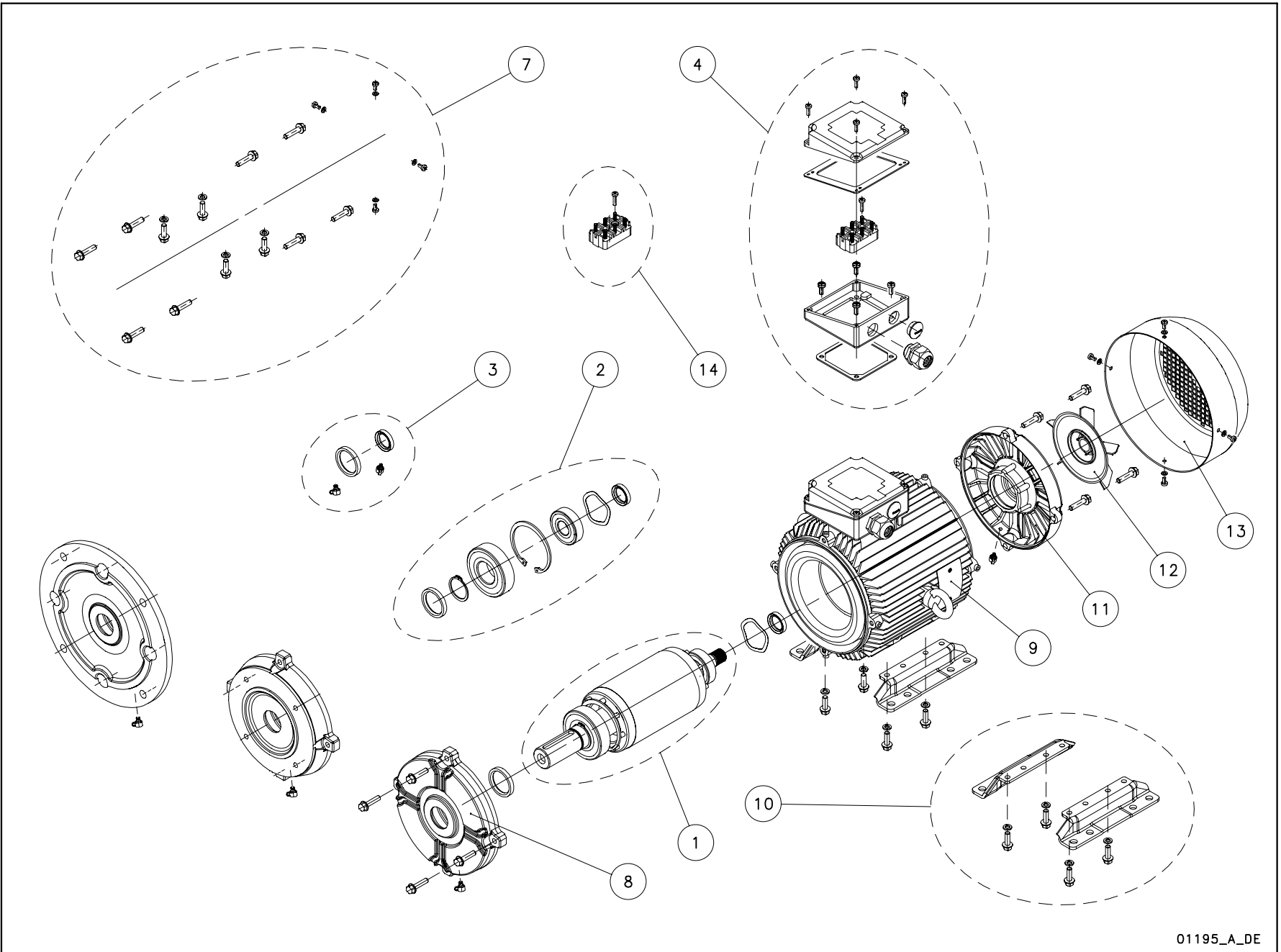


01193_A_DE

N.	Descrizione it	Description en	Description fr	Beschreibung de	Descripción es	Descrição pt
1	Albero rotore completo	Shaft rotor complete	Arbre rotor au complet	Rotorwelle Komplete	Eje rotor complete	Eixo rotor completo
2	Cuscinetti - Anelli	Bearings - Rings	Roulements - Anneaux	Lagers - Rings	Cojinetes - Anillos	Rolamentos - Anéis
3	Anelli tenuta - Tappi	Oil seals - Plugs	Bagues étanchéité-Bouchons	Abdichtungsringen-Schrauben	Anillos estanqueidad- Tapones	Selos anéis -Tampões
4	Scatola morsettiere	Terminal box	Boite a bornier	Klemmenkasten	Caja de bornes	Quadro de grampos
5	Condensatore	Capacitor	Condensateur	Kondensator	Condensador	Condensador
6	Tiranti PLM90	Tie rods PLM90	Tiges PLM90	Spannstangen PLM90	Tirantes PLM90	Tirantes PLM90
7	Viteria	Screws	Vis	Schrauben	Tornillos	Parafusos
8	Scudo anteriore DE	Front shield DE	Flasque antérieur	Vorderer kasten	Escudo anterior	Escudo dianteiro
9	Cassa statore - scatola morsettiere	Stator housing - terminal box	Carcasse stator - boite a bornier	Statorgehäuse - Klemmenkastendeckel	Carcasa estator - Caja de bornes	Caixa estator - Quadro de grampos
10	Piedi motore	Motor feet	Piedes moteur	Motorstützfuss	Motor pies	Motor pés
11	Scudo posteriore NDE	Rear shield NDE	Flasque arriere	Hinteren Schild	Escudo posterior	Escudo posterior
12	Ventola	Fan	Ventilateur	Lüfterrad	Ventilador	Ventoinha
13	Copriventola	Fan cover	Couvercle de ventilateur	Lüfterradhaube	Tapa ventilador	Cobertura da ventoinha
14	Basetta con perni	Base with pins	Bornier avec fiches	Klemmenbrett mit zapfen	Soporte de pernos	Bloco de grampos
N.	Beschrijving nl	Περιγραφή el	Açıklama tr	Kuvaus fi	Описание ru	Opis pl
1	Rotor as compleet	Άξονας στροφέα πλήρης	Komple rotor mili	Täydellinen roottorin akseli	Укомплектованный вал ротора	Wałek kompletny (z rotorem)
2	Lagers - Ringen	Κουζινέτα - δαχτυλίδια	Rulmanlar - Halkalar	Laakerit - Renkaat	Подшипники - Кольца	Łożyska - pierścienie
3	Zegel ringen - Stekkers	Στεγανοποιητικοί δακτύλιοι - Πώματα	Yağ keçeleri - Tapalar	Tiivisterenkaat - Tulpat	Уплотнительные прокладки - пробки	Uszczelka olejowa - zatyczki
4	Kabelkast	Κιβώτιο συστοιχίας ακροδεκτών	Terminal kutusu	Liitinalusta	Крышка клеммника	Skrzynka zaciskowa
5	Condensator	Πυκνωτής	Kondansatör	Kondensaattori	Конденсатор	Kondensator
6	Trekstangen PLM90	Ράβδοι δεσμών PLM90	Çekme çubukları PLM90	Vetotangot PLM90	Тяги PLM90	Szpilki gwintowane PLM90
7	Schroeven	Βίδες	Vidalar	Ruuvit	Винты	Śruby
8	Voorzijde Motorhuis	Μπροστινός προφυλακτήρας NDE	Ön koruma	Etusuojus DE	Передний щит Прив.сторона	Przednia tarcza
9	Statorhuis - Klemmenbord	Κάσα στάτη - κιβώτιο συστοιχίας ακροδεκτών	Stator yuvası - Terminal kutusu	Staattorin kotelo - liitinalusta	Корпус статора - коробка клеммника	Obudowa silnika - stator
10	Motor voeten	Πόδια κινητήρα	Motor ayakları	Moottorin jalat	Ножки двигателя	Stopki silnika
11	Achtergedeelte Motorhuis	Πίσω προφυλακτήρας NDE	Arka koruma	Takasuojaus NDE	Задний щит Неприв. Сторона	Tylna tarcza
12	Ventilator	Ανεμιστήρας	Vantilatör	Tuuletin	Вентилятор	Wentylator
13	Ventilatorkap	Κάλυμμα ανεμιστήρων	Vantilatör kapağı	Tuulettimen suojus	Крышка вентилятора	Ośłona wentylatora
14	Klemmenbord	Βάση με πείρους	Pimli kaide	Perusta ja tapit	Основание со штырями	Podstawa ze sworzeniami



01195_A_DE

N.	Descrizione it	Description en	Description fr	Beschreibung de	Descripción es	Descrição pt
1	Albero rotore completo	Shaft rotor complete	Arbre rotor au complet	Rotorwelle Komplete	Eje rotor complete	Eixo rotor completo
2	Cuscinetti - Anelli	Bearings - Rings	Roulements - Anneaux	Lagers - Rings	Cojinetes - Anillos	Rolamentos - Anéis
3	Anelli tenuta - Tappi	Oil seals - Plugs	Bagues étanchéité-Bouchons	Abdichtungsringen-Schrauben	Anillos estanqueidad- Tapones	Selos anéis -Tampões
4	Scatola morsettiera	Terminal box	Boite a bornier	Klemmenkasten	Caja de bornes	Quadro de grampos
5	Condensatore	Capacitor	Condensateur	Kondensator	Condensador	Condensador
6	Tiranti PLM90	Tie rods PLM90	Tiges PLM90	Spannstangen PLM90	Tirantes PLM90	Tirantes PLM90
7	Viteria	Screws	Vis	Schrauben	Tornillos	Parafusos
8	Scudo anteriore DE	Front shield DE	Flasque antérieur	Vorderer kasten	Escudo anterior	Escudo dianteiro
9	Cassa statore - scatola morsettiera	Stator housing - terminal box	Carcasse stator - boite a bornier	Statorgehäuse - Klemmenkastendeckel	Carcasa estator - Caja de bornes	Caixa estator - Quadro de grampos
10	Piedi motore	Motor feet	Piedes moteur	Motorstützfuss	Motor pies	Motor pés
11	Scudo posteriore NDE	Rear shield NDE	Flasque arriere	Hinteren Schild	Escudo posterior	Escudo posterior
12	Ventola	Fan	Ventilateur	Lüfterrad	Ventilador	Ventoinha
13	Copriventola	Fan cover	Couvercle de ventilateur	Lüfterradhaube	Tapa ventilador	Cobertura da ventoinha
14	Basetta con perni	Base with pins	Bornier avec fiches	Klemmenbrett mit zapfen	Soporte de pernos	Bloco de grampos
N.	Beschrijving nl	Περιγραφή el	Açıklama tr	Kuvaus fi	Описание ru	Opis pl
1	Rotor as compleet	Άξονας στροφέα πλήρης	Komple rotor mili	Täydellinen roottorin akseli	Укомплектованный вал ротора	Wałek kompletny (z rotorem)
2	Lagers - Ringen	Κουζινέτα - δαχτυλίδια	Rulmanlar - Halkalar	Laakerit - Renkaat	Подшипники - Кольца	Łożyska - pierścienie
3	Zegel ringen - Stekkers	Στεγανοποιητικοί δακτύλιοι - Πώματα	Yağ keçeleri - Tapalar	Tiivisterenkaat - Tulpat	Уплотнительные прокладки - пробки	Uszczelka olejowa - zatyczki
4	Kabelkast	Κιβώτιο συστοιχίας ακροδεκτών	Terminal kutusu	Liitinalusta	Крышка клеммника	Skrzynka zaciskowa
5	Condensator	Πυκνωτής	Kondansatör	Kondensaattori	Конденсатор	Kondensator
6	Trekstangen PLM90	Ράβδοι δεσμών PLM90	Çekme çubukları PLM90	Vetotangot PLM90	Тяги PLM90	Szpilki gwintowane PLM90
7	Schroeven	Βίδες	Vidalar	Ruuvit	Винты	Śruby
8	Voorzijde Motorhuis	Μπροστινός προφυλακτήρας NDE	Ön koruma	Etusuojus DE	Передний щит Прив.сторона	Przednia tarcza
9	Statorhuis - Klemmenbord	Κάσα στάτη - κιβώτιο συστοιχίας ακροδεκτών	Stator yuvası - Terminal kutusu	Staattorin kotelo - liitinalusta	Корпус статора - коробка клеммника	Obudowa silnika - stator
10	Motor voeten	Πόδια κινητήρα	Motor ayakları	Moottorin jalat	Ножки двигателя	Stopki silnika
11	Achtergedeelte Motorhuis	Πίσω προφυλακτήρας NDE	Arka koruma	Takasuoja NDE	Задний щит Неприв. Сторона	Tylna tarcza
12	Ventilator	Ανεμιστήρας	Vantilatör	Tuuletin	Вентилятор	Wentylator
13	Ventilatorkap	Κάλυμμα ανεμιστήρων	Vantilatör kapağı	Tuulettimen suojus	Крышка вентилятора	Ośłona wentylatora
14	Klemmenbord	Βάση με πείρους	Pimli kaide	Perusta ja tapit	Основание со штырями	Podstawa ze sworzeniami

PLM Horizontal Pump FHF / SHF 2 Pole 3,0 - 18,5 kW

PLM --->	100B3/330	112B3/340	132B3/355	132B3/375	160B3/3110	160B3/3150	160B3/3185
3 ~, 230-400V ->	50A07RA00						
3~, 400/690V ->		50A30VA00	50A16VA00	50A17VA00	50A31VA00	50A24VA00	50A25VA00
kW ->	3,0	4,0	5,5	7,5	11,0	15,0	18,5
PLM IE3							

Kit

1	Shaft rotor complete	5KL09AC6	5KL09AC7	5KL09AC8	5KL09AC9	5KL09ADA	5KL09ADB	5KL09ADC
2*	Bearings - Rings	5KL11AAE	5KL11AA0	5KL11AAW	5KL11AAW	5KL11AA4	5KL11AA4	5KL11AA4
	Bearings size	6205/6206	6206/6306 H	6305/6308 H	6305/6308 H	6308/6310 H	6308/6310 H	6308/6310 HE
4	Terminal box	5KL30AAG	5KL30AAL	5KL30AAN	5KL30AAN	5KL30AAP	5KL30AAP	5KL30AAQ
3	Oil seals - Plugs	5KL03AAB	5KL03AAB					
				5KL03AAC	5KL03AAC	5KL03AAC	5KL03AAC	5KL03AAC
7	Screws PLM100-160	5KL40AAA						
5	Capacitor	-						
6	Tie rods PLM90	-						

Single Unit

8	Front shield DE	554030000	5KL20AAD	5KL20AAE	5KL20AAE	5KL20AAF	5KL20AAF	5KL20AAF
9	Stator terminal box	5KL25AAL	5KL25ABH	5KL25AAY	5KL25ACF	5KL25ABK	5KL25ACL	5KL25ACM
11	Rear shield NDE	5KL20ABA	5KL20ABB	5KL20AA3	5KL20AA3	5KL20ABC	5KL20ABC	5KL20ABC
12	Fan	540760030	540760030	540760040	540760040	540760040	540760040	540760040
13	Fan cover	5KL29AAB	5KL29AAE	5KL29AAF	5KL29AAF	5KL29AAG	5KL29AAG	5KL29AAG
14	Base with pins	5830AAA						
			5830AAB	5830AAB	5830AAB			
						5830AAC	5830AAC	5830AAC
10	Motor feet	5KL23AAB	3,0 kW	PLM 100				
		5KL23AAC	4,0 kW	PLM 112				
		5KL23AAD	5,5 - 7,5 kW	PLM 132				
		5KL23AAE	11,0 - 18,5 kW	PLM 160				

Note. Motors with International Energy Efficiency Class IE3 according CE Standard 640/2009

* Recommended spare parts - Parti di ricambio consigliate

* Pièces détachées conseillées - Empfohlene Ersatzteile

PLM_F_S_FCS_2P_P(30-220)_Nov14_EdA

PLM Horizontal Pump FHS / SHS 2 Pole 4,0 - 22,0 kW

PLM --->	100RB5/330	112RB5/340	132RB5/355	132B5/375	160B35/3110	160B35/315	160B35/3185	180RB35/3220
3~, 230/400V ->	50A02RE00							
3~, 400/690V ->	50A02VE00	50A08VE00	50A13VE00	50A17VB00	50A31VC00	50A24VC00	50A25VC00	50A26VM00
kW ->	3,0	4,0	5,5	7,5	11,0	15,0	18,5	22,0
PLM IE3								

Kit

1	Shaft rotor complete	5KL09AC6	5KL09AC7	5KL09AC8	5KL09AC9	5KL09ADA	5KL09ADB	5KL09ADC	5KL09ADH
2*	Bearings - Rings	5KL11AA2	5KL11AA0	5KL11AA3	5KL11AAW	5KL11AA4	5KL11AA4	5KL11AA4	5KL11AA4
	Bearings size	6204/6206 HE	6206/6306 HE	6206/6308 HE	6305/6308 HE	6308/6310 HE	6308/6310 HE	6308/6310 HE	6308/6310 HE
4	Terminal box	5KL30AAE	5KL30AAG	5KL30AAN	5KL30AAN	5KL30AAP	5KL30AAP	5KL30AAQ	5KL30AAQ
3	Oil seals - Plugs	5KL03AAA	5KL03AAB	5KL03AAB	5KL03AAC	5KL03AAC	5KL03AAC	5KL03AAC	5KL03AAC
7	Screws PLM100-160	5KL40AAA							
5	Capacitor	-							
6	Tie rods PLM90	5KL22AAA							

Single Unit

8	Front shield DE	5KL20AAR	551030050	555102030	5KL20AAW	5KL20AAY	5KL20AAY	5KL20AAY	5KL20AAY
9	Stator terminal box	5KL25ABP							
		5KL25AB8	5KL25AAP	5KL25ABR	5KL25ACF	5KL25ABK	5KL25ACL	5KL25ACM	5KL25ACM
11	Rear shield NDE	5KL20AA7	5KL20ABA	5KL20AA1	5KL20AA3	5KL20ABC	5KL20ABC	5KL20ABC	5KL20AA4
12	Fan	540760010	540760030	540760030	540760040	540760040	540760040	540760040	540760040
13	Fan cover	5KL29AAA	5KL29AAB	5KL29AAD	5KL29AAF	5KL29AAG	5KL29AAG	5KL29AAG	5KL29AAG
14	Base with pins	5830AAA	3,0 - 4,0 kW		PLM 90-100				
		5830AAB	5,5 - 7,5 kW		PLM 112-132				
		5830AAC	11,0 - 18,5 kW		PLM 160				
10	Motor feet	5KL23AAE	11,0 - 22, kW		PLM 160				

Note. Motors with International Energy Efficiency Class IE3 according CE Standard 640/2009

* Recommended spare parts - Parti di ricambio consigliate

* Pièces détachées conseillées - Empfohlene Ersatzteile

PLM_F_S_FCS_2P_P(30-220)_Nov14_EdA

PLM Horizontal Pump FCS 2 Pole 4,0 - 22,0 kW

PLM --->	100RB5/330	112RB5/340	132RB5/355	132B5/375	160RB5/3110	160B5/3150	160B5/3185	180RB5/3220
3 ~, 230-400V ->	50A02RE00	50A08RE00	50A13RE00	50A17RB00	50A19RE00	50A24RB00	50A25RB00	50A26RE00
3~, 400/690V ->	50A02VE00	50A08VE00	50A13VE00	50A17VB00	50A19VE00	50A24VB00	50A25VB00	50A26VE00
kW ->	3,0	4,0	5,5	7,5	11,0	15,0	18,5	22,0
PLM IE3								

Kit

1	Shaft rotor complete	5KL09ADE	5KL09ADF	5KL09AC8	5KL09AC9	5KL09ADG	5KL09ADB	5KL09ADC	5KL09ADH
2*	Bearings - Rings	5KL11AA2	5KL11AA0	5KL11AA3	5KL11AAW	5KL11AA4	5KL11AA4	5KL11AA4	5KL11AA4
	Bearings size	6204/6206 HE	6206/6306 HE	6206/6308 HE	6305/6308 HE	6308/6310 HE	6308/6310 HE	6308/6310 HE	6308/6310 HE
4	Terminal box	5KL30AAE	5KL30AAG	5KL30AAL	5KL30AAN	5KL30AAP	5KL30AAQ	5KL30AAQ	5KL30AAQ
3	Oil seals - Plugs	5KL03AAA	5KL03AAB	5KL03AAB					
					5KL03AAC	5KL03AAC	5KL03AAC	5KL03AAC	5KL03AAC
7	Screws PLM100-160	5KL40AAA							
6	Tie rods PLM90	5KL22AAA							
5	Capacitor	-							

Single Unit

8	Front shield DE	5KL20AAR	5KL20AAT	5KL20AAV	5KL20AAW	5KL20AAX	5KL20AAY	5KL20AAY	5KL20AAY
9	Stator terminal box	5KL25ABP	5KL25AAN	5KL25AB9	5KL25ACA	5KL25ACB	5KL25ACC	5KL25ABA	5KL25ACD
		5KL25AB8	5KL25AAP	5KL25ABR	5KL25ACF	5KL25ABK	5KL25ACL	5KL25ABB	5KL25ACM
11	Rear shield NDE	5KL20AAZ	554030010	5KL20AA1	5KL20AA3	5KL20AA3	554030040	5KL20AA4	5KL20AA4
12	Fan	540760010	540760030	540760030	540760040	540760040	540760040	540760040	540760040
13	Fan cover	5KL29AAA	5KL29AAB	5KL29AAD	5KL29AAF	5KL29AAF	5KL29AAG	5KL29AAG	5KL29AAG
14	Base with pins	5830AAA	2,2 - 4,0 kW			PLM 90-100			
		5830AAB	5,5 - 11,0 kW			PLM 112-132			
		5830AAC	15,0 - 22,0 kW			PLM 160			
10	Motor feet	5KL23AAE	11,0 - 22, kW			PLM 160			

Note. Motors with International Energy Efficiency Class IE3 according CE Standard 640/2009

* Recommended spare parts - Parti di ricambio consigliate

* Pièces détachées conseillées - Empfohlene Ersatzteile

PLM_F_S_FCS_2P_P(30-220)_Nov14_EdA

xylem