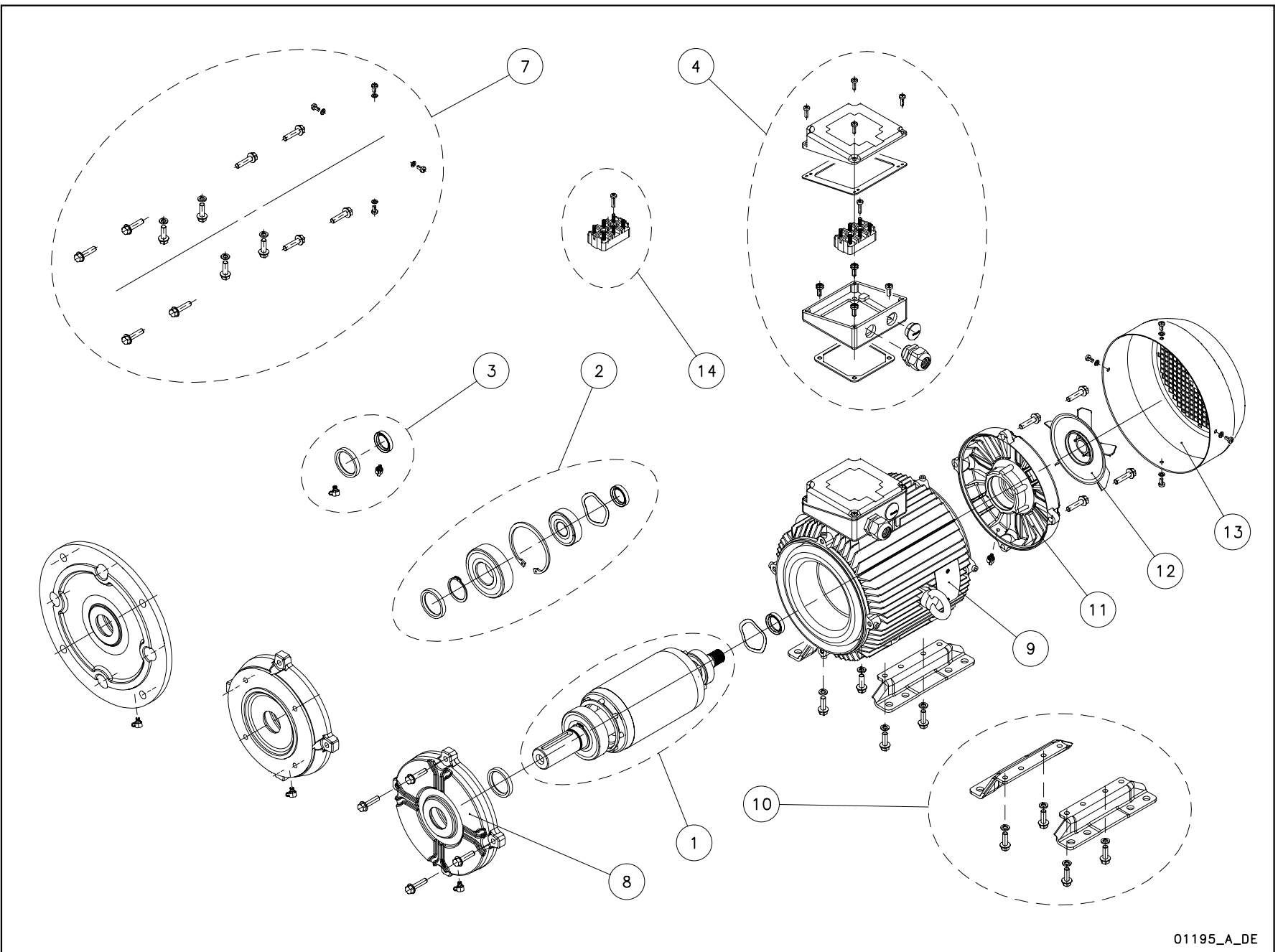


01193_A_DE

Lowara, Vogel Pumpen are trademarks of Xylem Inc. or one of its subsidiaries.
Goulds is a registered trademark of Goulds Pumps, Inc. and is used under license.

N.	Descrizione it	Description en	Description fr	Beschreibung de	Descripción es	Descrição pt
1	Albero rotore completo	Shaft rotor complete	Arbre rotor au complet	Rotorwelle Komplete	Eje rotor complete	Eixo rotor completo
2	Cuscinetti - Anelli	Bearings - Rings	Roulements - Anneaux	Lagers - Rings	Cojinetes - Anillos	Rolamentos - Anéis
3	Anelli tenuta - Tappi	Oil seals - Plugs	Bagues étanchéité-Bouchons	Abdichtungsringen-Schrauben	Anillos estanqueidad- Tapones	Selos anéis -Tampões
4	Scatola morsettiere	Terminal box	Boite a bornier	Klemmenkasten	Caja de bornes	Quadro de grampos
5	Condensatore	Capacitor	Condensateur	Kondensator	Condensador	Condensador
6	Tiranti PLM90	Tie rods PLM90	Tiges PLM90	Spannstangen PLM90	Tirantes PLM90	Tirantes PLM90
7	Viteria	Screws	Vis	Schrauben	Tornillos	Parafusos
8	Scudo anteriore DE	Front shield DE	Flasque antérieur	Vorderer kasten	Escudo anterior	Escudo dianteiro
9	Cassa statore - scatola morsettiere	Stator housing - terminal box	Carcasse stator - boite a bornier	Statorgehäuse - Klemmenkastendeckel	Carcasa estator - Caja de bornes	Caixa estator - Quadro de grampos
10	Piedi motore	Motor feet	Piedes moteur	Motorstützfuss	Motor pies	Motor pés
11	Scudo posteriore NDE	Rear shield NDE	Flasque arriere	Hinteren Schild	Escudo posterior	Escudo posterior
12	Ventola	Fan	Ventilateur	Lüfterrad	Ventilador	Ventoinha
13	Copriventola	Fan cover	Couvercle de ventilateur	Lüfterradhaube	Tapa ventilador	Cobertura da ventoinha
14	Basetta con perni	Base with pins	Bornier avec fiches	Klemmenbrett mit zapfen	Soporte de pernos	Bloco de grampos
N.	Beschrijving nl	Περιγραφή el	Açıklama tr	Kuvaus fi	Описание ru	Opis pl
1	Rotor as compleet	Άξονας στροφέα πλήρης	Komple rotor mili	Täydellinen roottorin akseli	Укомплектованный вал ротора	Wałek kompletny (z rotorem)
2	Lagers - Ringen	Κουζινέτα - δαχτυλίδια	Rulmanlar - Halkalar	Laakerit - Renkaat	Подшипники - Кольца	Łożyska - pierścienie
3	Zegel ringen - Stekkers	Στεγανοποιητικοί δακτύλιοι - Πώματα	Yağ keçeleri - Tapalar	Tiivisterenkaat - Tulpat	Уплотнительные прокладки - пробки	Uszczelka olejowa - zatyczki
4	Kabelkast	Κιβώτιο συστοιχίας ακροδεκτών	Terminal kutusu	Liitinalusta	Крышка клемника	Skrzynka zaciskowa
5	Condensator	Πυκνωτής	Kondansatör	Kondensaattori	Конденсатор	Kondensator
6	Trekstangen PLM90	Ράβδοι δεσμών PLM90	Çekme çubukları PLM90	Vetotangot PLM90	Тяги PLM90	Szpilki gwintowane PLM90
7	Schroeven	Βίδες	Vidalar	Ruuvit	Винты	Śruby
8	Voorzijde Motorhuis	Μπροστινός προφυλακτήρας NDE	Ön koruma	Etusuojus DE	Передний щит Прив.сторона	Przednia tarcza
9	Statorhuis - Klemmenbord	Κάσα στάτη - κιβώτιο συστοιχίας ακροδεκτών	Stator yuvası - Terminal kutusu	Staattorin kotelo - liitinalusta	Корпус статора - коробка клемника	Obudowa silnika - stator
10	Motor voeten	Πόδια κινητήρα	Motor ayakları	Moottorin jalat	Ножки двигателя	Stopki silnika
11	Achtergedeelte Motorhuis	Πίσω προφυλακτήρας NDE	Arka koruma	Takasuojaus NDE	Задний щит Неприв. Сторона	Tylna tarcza
12	Ventilator	Ανεμιστήρας	Vantilatör	Tuuletin	Вентилятор	Wentylator
13	Ventilatorkap	Κάλυμμα ανεμιστήρων	Vantilatör kapağı	Tuulettimen suojus	Крышка вентилятора	Ośłona wentylatora
14	Klemmenbord	Βάση με πείρους	Pimli kaide	Perusta ja tapit	Основание со штырями	Podstawa ze sworzeniami



01195_A_DE

N.	Descrizione it	Description en	Description fr	Beschreibung de	Descripción es	Descrição pt
1	Albero rotore completo	Shaft rotor complete	Arbre rotor au complet	Rotorwelle Komplete	Eje rotor complete	Eixo rotor completo
2	Cuscinetti - Anelli	Bearings - Rings	Roulements - Anneaux	Lagers - Rings	Cojinetes - Anillos	Rolamentos - Anéis
3	Anelli tenuta - Tappi	Oil seals - Plugs	Bagues étanchéité-Bouchons	Abdichtungsringen-Schrauben	Anillos estanqueidad- Tapones	Selos anéis -Tampões
4	Scatola morsettiera	Terminal box	Boite a bornier	Klemmenkasten	Caja de bornes	Quadro de grampos
5	Condensatore	Capacitor	Condensateur	Kondensator	Condensador	Condensador
6	Tiranti PLM90	Tie rods PLM90	Tiges PLM90	Spannstangen PLM90	Tirantes PLM90	Tirantes PLM90
7	Viteria	Screws	Vis	Schrauben	Tornillos	Parafusos
8	Scudo anteriore DE	Front shield DE	Flasque antérieur	Vorderer kasten	Escudo anterior	Escudo dianteiro
9	Cassa statore - scatola morsettiera	Stator housing - terminal box	Carcasse stator - boite a bornier	Statorgehäuse - Klemmenkastendeckel	Carcasa estator - Caja de bornes	Caixa estator - Quadro de grampos
10	Piedi motore	Motor feet	Piedes moteur	Motorstützfuss	Motor pies	Motor pés
11	Scudo posteriore NDE	Rear shield NDE	Flasque arriere	Hinteren Schild	Escudo posterior	Escudo posterior
12	Ventola	Fan	Ventilateur	Lüfterrad	Ventilador	Ventoinha
13	Copriventola	Fan cover	Couvercle de ventilateur	Lüfterradhaube	Tapa ventilador	Cobertura da ventoinha
14	Basetta con perni	Base with pins	Bornier avec fiches	Klemmenbrett mit zapfen	Soporte de pernos	Bloco de grampos
N.	Beschrijving nl	Περιγραφή el	Açıklama tr	Kuvaus fi	Описание ru	Opis pl
1	Rotor as compleet	Άξονας στροφέα πλήρης	Komple rotor mili	Täydellinen roottorin akseli	Укомплектованный вал ротора	Wałek kompletny (z rotorem)
2	Lagers - Ringen	Κουζινέτα - δαχτυλίδια	Rulmanlar - Halkalar	Laakerit - Renkaat	Подшипники - Кольца	Łożyska - pierścienie
3	Zegel ringen - Stekkers	Στεγανοποιητικοί δακτύλιοι - Πώματα	Yağ keçeleri - Tapalar	Tiivisterenkaat - Tulpat	Уплотнительные прокладки - пробки	Uszczelka olejowa - zatyczki
4	Kabelkast	Κιβώτιο συστοιχίας ακροδεκτών	Terminal kutusu	Liitinalusta	Крышка клеммника	Skrzynka zaciskowa
5	Condensator	Πυκνωτής	Kondansatör	Kondensaattori	Конденсатор	Kondensator
6	Trekstangen PLM90	Ράβδοι δεσμών PLM90	Çekme çubukları PLM90	Vetotangot PLM90	Тяги PLM90	Szpilki gwintowane PLM90
7	Schroeven	Βίδες	Vidalar	Ruuvit	Винты	Śruby
8	Voorzijde Motorhuis	Μπροστινός προφυλακτήρας NDE	Ön koruma	Etusuojus DE	Передний щит Прив.сторона	Przednia tarcza
9	Statorhuis - Klemmenbord	Κάσα στάτη - κιβώτιο συστοιχίας ακροδεκτών	Stator yuvası - Terminal kutusu	Staattorin kotelo - liitinalusta	Корпус статора - коробка клеммника	Obudowa silnika - stator
10	Motor voeten	Πόδια κινητήρα	Motor ayakları	Moottorin jalat	Ножки двигателя	Stopki silnika
11	Achtergedeelte Motorhuis	Πίσω προφυλακτήρας NDE	Arka koruma	Takasuojaus NDE	Задний щит Неприв. Сторона	Tylna tarcza
12	Ventilator	Ανεμιστήρας	Vantilatör	Tuuletin	Вентилятор	Wentylator
13	Ventilatorkap	Κάλυμμα ανεμιστήρων	Vantilatör kapağı	Tuulettimen suojus	Крышка вентилятора	Ośłona wentylatora
14	Klemmenbord	Βάση με πείρους	Pimli kaide	Perusta ja tapit	Основание со штырями	Podstawa ze sworzeniami

PLM Horizontal Pump FHF / SHF 2 Pole 3,0 - 18,5 kW

PLM -->	100B3/330	112B3/340	112B3/340	132B3/355	132B3/375	160B3/3110	160B3/3110	160B3/3150	160B3/3185
3 ~, 230-400V ->	50007RA00								
3 ~, 400/690V ->		50012VA00	50030VA00	50016VA00	50017VA00	50023VA00	50031VA00	50024VA00	50025VA00
kW ->	3,0	4,0	4,0	5,5	7,5	11,0	11,0	15,0	18,5
	PLM IE2	PLM IE1	PLM IE2			PLM IE1	PLM IE2		

Kit

1	Shaft rotor complete	5KL09ABC	5KL09ABL	5KL09ACX	5KL09ABZ	5KL09AB0	5KL09ACE	5KL09ACZ	5KL09ACF	5KL09ACG
2*	Bearings - Rings	5KL11AAE	5KL11AAG	5KL11AAF	5KL11AAM	5KL11AAM	5KL11AAQ	5KL11AAQ	5KL11AAQ	5KL11AAQ
	Bearings size	6205/6206	6206/6306	6205/6306	6305/6308	6305/6308	6307/6310	6307/6310	6307/6310	6307/6310
4	Terminal box	5KL30AAG	5KL30AAL	5KL30AAL	5KL30AAN	5KL30AAN	5KL30AAP	5KL30AAP	5KL30AAP	5KL30AAQ
3	Oil seals - Plugs	5KL03AAB	5KL03AAB	5KL03AAB						
					5KL03AAC	5KL03AAC	5KL03AAC	5KL03AAC	5KL03AAC	5KL03AAC
7	Screws PLM100-160	5KL40AAA								
5	Capacitor	-								
6	Tie rods PLM90	-								

Single Unit

8	Front shield DE	5KL20AAB	5KL20AAD	5KL20AAD	5KL20AAE	5KL20AAE	5KL20AAF	5KL20AAF	5KL20AAF	5KL20AAF
9	Stator terminal box	5KL25AAL	5KL25AAT	5KL25ABH	5KL25AAY	5KL25AA0	5KL25AA7	5KL25ABK	5KL25AA9	5KL25ABB
11	Rear shield NDE	5KL20AA0	5KL20AA2	5KL20AA2	5KL20AA3	5KL20AA3	5KL20AA4	5KL20AA4	5KL20AA4	5KL20AA4
12	Fan	540760030	540760030	540760030	540760040	540760040	540760040	540760040	540760040	540760040
13	Fan cover	5KL29AAB	5KL29AAE	5KL29AAE	5KL29AAF	5KL29AAF	5KL29AAG	5KL29AAG	5KL29AAG	5KL29AAG
14	Base with pins	5830AAA								
			5830AAB	5830AAB	5830AAB	5830AAB				
							5830AAC	5830AAC	5830AAC	5830AAC
10	Motor feet	5KL23AAB	3,0 kW			PLM 100				
		5KL23AAC	4,0 kW			PLM 112				
		5KL23AAD	5,5 - 7,5 kW			PLM 132				
		5KL23AAE	11,0 - 18,5 kW			PLM 160				

Note. Motors with International Energy Efficiency Class IE2 according CE Standard 640/2009

* Recommended spare parts - Parti di ricambio consigliate

* Pièces détachées conseillées - Empfohlene Ersatzteile

PLM_F_S_FCS_2P_P(30-220)_Feb08_EdE

PLM Horizontal Pump FHS / SHS 2 Pole 4,0 - 22,0 kW

PLM --->	100RB5/330	112RB5/340	132RB5/355	132B5/375	160B35/3110	160B35/3110	160B35/315	160B35/3185	180RB35/3220
3~, 230/400V ->	50002RE00								
3~, 400/690V ->	50002VE00	50008VE00	50013VE00	50017VB00	50023VC00	50031VC00	50024VC00	50025VC00	50026VM00
kW ->	3,0	4,0	5,5	7,5	11,0	11,0	15,0	18,5	22,0
	PLM IE2				PLM IE1	PLM IE2			

Kit

1	Shaft rotor complete	5KL09AAE	5KL09AA2	5KL09ABE	5KL09ABN	5KL09AB4	5KL09ACY	5KL09AB5	5KL09AB7	5KL09AB9
2*	Bearings - Rings	5KL11AAC	5KL11AAE	5KL11AAH	5KL11AAM	5KL11AAQ	5KL11AAQ	5KL11AAQ	5KL11AAQ	5KL11AAQ
	Bearings size	6203/6206	6205/6206	6206/6308	6305/6308	6307/6310	6307/6310	6307/6310	6307/6310	6307/6310
4	Terminal box	5KL30AAE	5KL30AAG	5KL30AAN	5KL30AAN	5KL30AAP	5KL30AAP	5KL30AAP	5KL30AAQ	5KL30AAQ
3	Oil seals - Plugs	5KL03AAA	5KL03AAB	5KL03AAB	5KL03AAC	5KL03AAC	5KL03AAC	5KL03AAC	5KL03AAC	5KL03AAC
7	Screws PLM100-160	5KL40AAA								
5	Capacitor	-								
6	Tie rods PLM90	5KL22AAA								

Single Unit

8	Front shield DE	5KL20AAR	5KL20AAT	5KL20AAV	5KL20AAW	5KL20AAY	5KL20AAY	5KL20AAY	5KL20AAY	5KL20AAY
9	Stator terminal box	5KL25AAE								
		5KL25AAF	5KL25AAP	5KL25AAW	5KL25AA0	5KL25AA7	5KL25ABK	5KL25AA9	5KL25ABB	5KL25ABD
11	Rear shield NDE	5KL20AAZ	5KL20AA0	5KL20AA1	5KL20AA3	5KL20AA4	5KL20AA4	5KL20AA4	5KL20AA4	5KL20AA4
12	Fan	540760010	540760030	540760030	540760040	540760040	540760040	540760040	540760040	540760040
13	Fan cover	5KL29AAA	5KL29AAB	5KL29AAD	5KL29AAF	5KL29AAG	5KL29AAG	5KL29AAG	5KL29AAG	5KL29AAG

14	Base with pins	5830AAA	3,0 - 4,0 kW	PLM 90-100
		5830AAB	5,5 - 7,5 kW	PLM 112-132
		5830AAC	11,0 - 18,5 kW	PLM 160

10	Motor feet	5KL23AAE	11,0 - 22, kW	PLM 160
----	------------	----------	---------------	---------

Note. Motors with International Energy Efficiency Class IE2 according CE Standard 640/2009

* Recommended spare parts - Parti di ricambio consigliate

* Pièces détachées conseillées - Empfohlene Ersatzteile

PLM_F_S_FCS_2P_P(30-220)_Feb08_EdE

PLM Horizontal Pump FCS 2 Pole 4,0 - 22,0 kW

PLM -->	100RB5/330	112RB5/340	132RB5/355	132B5/375	160RB5/3110	160B5/3150	160B5/3185	180RB5/3220
3 ~, 230-400V ->	50002RE00	50008RE00	50013RE00	50017RB00	50019RE00	50024RB00	50025RB00	50026RE00
3~, 400/690V ->	50002VE00	50008VE00	50013VE00	50017VB00	50019VE00	50024VB00	50025VB00	50026VE00
kW ->	3,0	4,0	5,5	7,5	11,0	15,0	18,5	22,0
	PLM IE2							

Kit

1	Shaft rotor complete	5KL09AAE	5KL09AA2	5KL09ABE	5KL09ABN	5KL09ABR	5KL09AB5	5KL09AB7	5KL09AB9
2*	Bearings - Rings	5KL11AAC	5KL11AAE	5KL11AAH	5KL11AAM	5KL11AAX	5KL11AAQ	5KL11AAQ	5KL11AAQ
	Bearings size	6203/6206	6205/6206	6206/6308	6305/6308	6305/6310 HE	6307/6310	6307/6310	6307/6310
4	Terminal box	5KL30AAE	5KL30AAG	5KL30AAL	5KL30AAN	5KL30AAP	5KL30AAP	5KL30AAQ	5KL30AAQ
3	Oil seals - Plugs	5KL03AAA	5KL03AAB	5KL03AAB					
					5KL03AAC	5KL03AAC	5KL03AAC	5KL03AAC	5KL03AAC
7	Screws PLM100-160	5KL40AAA							
6	Tie rods PLM90	5KL22AAA							
5	Capacitor	-							

Single Unit

8	Front shield DE	5KL20AAR	5KL20AAT	5KL20AAV	5KL20AAW	5KL20AAX	5KL20AAY	5KL20AAY	5KL20AAY
9	Stator terminal box	5KL25AAE	5KL25AAN	5KL25AAV	5KL25AAZ	5KL25AA1	5KL25AA8	5KL25ABA	5KL25ABC
		5KL25AAF	5KL25AAP	5KL25AAW	5KL25AA0	5KL25AA2	5KL25AA9	5KL25ABB	5KL25ABD
11	Rear shield NDE	5KL20AAZ	5KL20AA0	5KL20AA1	5KL20AA3	5KL20AA3	5KL20AA4	5KL20AA4	5KL20AA4
12	Fan	540760010	540760030	540760030	540760040	540760040	540760040	540760040	540760040
13	Fan cover	5KL29AAA	5KL29AAB	5KL29AAD	5KL29AAF	5KL29AAF	5KL29AAG	5KL29AAG	5KL29AAG
14	Base with pins	5830AAA	2,2 - 4,0 kW			PLM 90-100			
		5830AAB	5,5 - 11,0 kW			PLM 112-132			
		5830AAC	15,0 - 22,0 kW			PLM 160			
10	Motor feet	5KL23AAE	11,0 - 22, kW			PLM 160			

Note. Motors with International Energy Efficiency Class IE2 according CE Standard 640/2009

* Recommended spare parts - Parti di ricambio consigliate

* Pièces détachées conseillées - Empfohlene Ersatzteile

PLM_F_S_FCS_2P_P(30-220)_Feb08_EdE

xylem