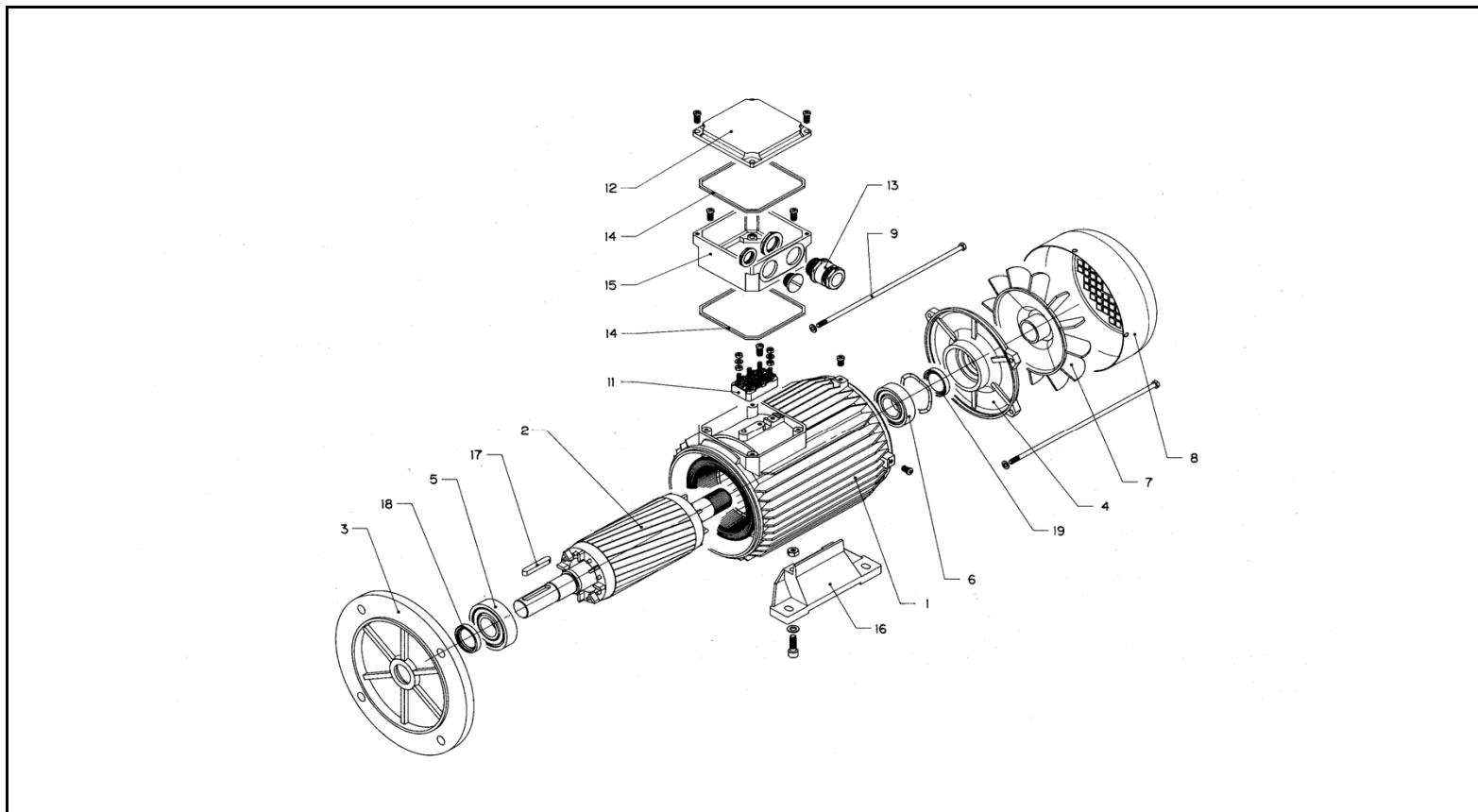


xylem

MOTORI B35 TRIFASE 2 POLI GRAND. 200-250 - FHS/SHS
THREE PHASE B35 MOTORS 2 POLE SIZE 200-250 - FHS/SHS



 **LOWARA**

- 266A/A -

ITEM N.	DESCRIZIONE	DESCRIPTION	Q.TA' Q.TY	MA-B35-30(A4C200LA2)	MA-B35-37(A4C200LB2)	MA-B35-45 (A4C225M2)	MA-B35-55 (A4C250M2)
				130643701	130643711	130643721	130643731
				30 kW	37 kW	45 kW	55 kW
1	Parti meccaniche ⁽¹⁾	Mechanical parts ⁽¹⁾	1	182221050	182221060	182220640	182220650
2	Albero - rotore	Shaft - rotor	1	182650300	182650310	182220670	182220680
3	Flangia	Flange	1	182650511		182220720	182220730
4	Coperchio motore	Motor cover	1	182650640		182220770	
* 5	Cuscinetto ant.	Front bearing	1	182651430 (6312 Z)		182220790 (6313 Z)	182220800 (6314 Z)
* 6	Cuscinetto post.	Rear bearing bearing	1	182651410 (6210 Z)		182220810 (6213 Z)	
7	Ventola	Fan	1	182650710		182220830	
	Anello elastico (2)	Retaining ring (2)	1	TBD		182220850	
8	Copriventola	Fan cover	1	182650780		182220870	
9	Tirante	Tie rod	=>				
11	Morsettiera	Terminal block	1	182651010			
12	Coperchio scatola mors.	Terminal box cover	1	182220950			
13	Pressacavo + Dado	Cable gland + Nut	1 + 1	M40 X 1,5			
14	Guarnizione inf.	Gasket, inf.	1	182220970			
	Guarnizione sup.	Gasket, sup.	1	182220610			
15	Scatola morsettiera	Terminal box	1	182220930			
16	Piede motore	Motor foot	1 + 1	182650930		182221030	182221040
17	Linguetta	Key	1	182651260		182220700	182220710
* 18	Anello tenuta ant.	Front seal ring	1	182651300		182220890	182220900
	Coperchio cuscinetto ant.	Front bearing cap	1				
	Rondella precarica ant.	Front preload washer	1				
* 19	Anello tenuta post.	Rear seal ring	1	182651310		182220890	
	Rondella precarica post.	Rear preload washer	1	182651510		TBD	
	Tappo carico grasso	Grease fill plug	1				

* Parti di ricambio consigliate - Recommended spare parts

"MA" = Motore Marelli - Marelli Motor

TBD : To Be Defined / Da Definirsi

(1) Parti meccaniche (cassa mot., flangie, albero c/rotore, statore non avvolto) - Mechanical parts (motor case, flanges, shaft with rotor, stator not wound)

(2) Anello elastico a carico del cliente - Retaining ring in charge of the user