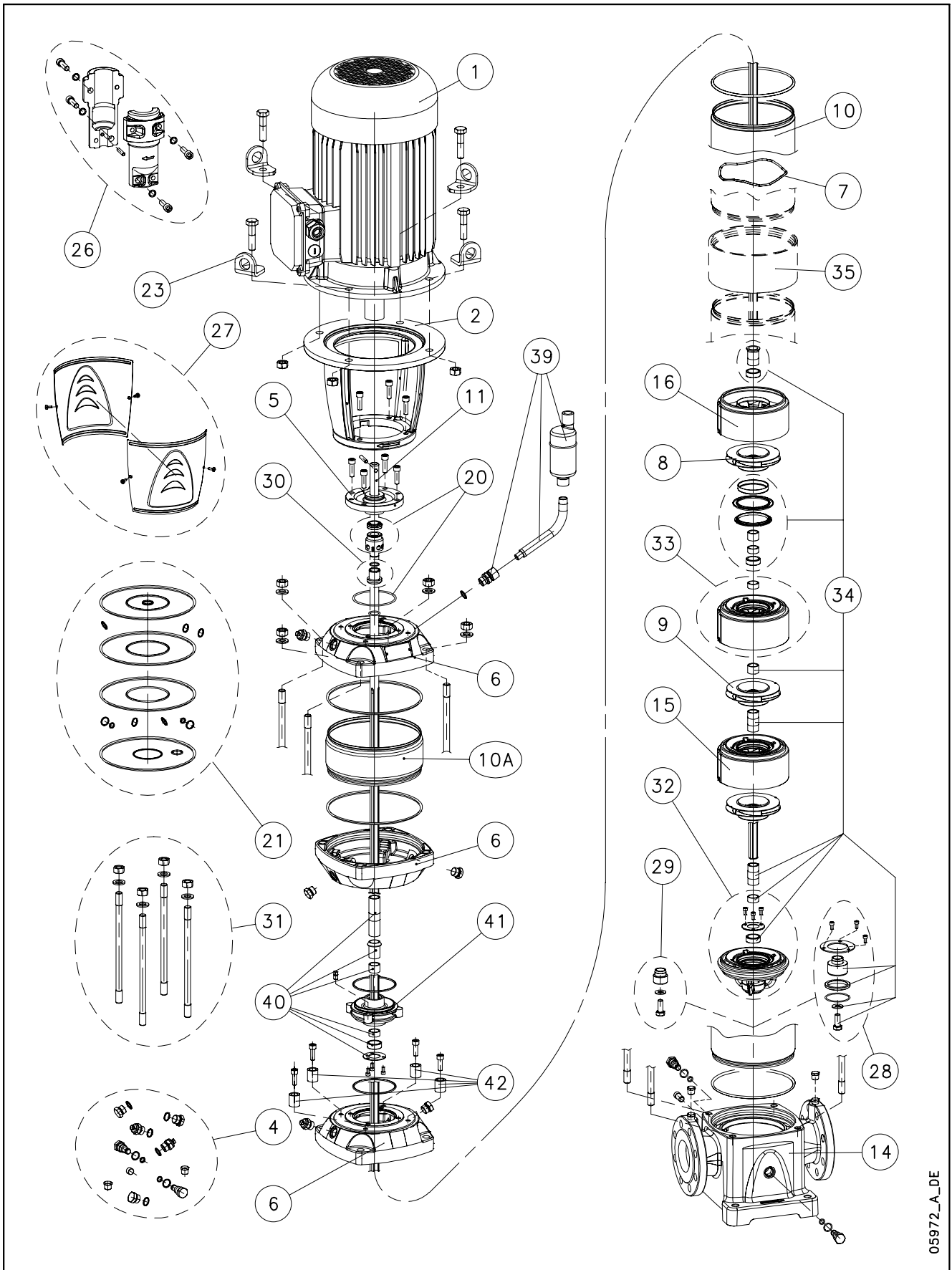


## 33, 46, 66, 92 SV..B (180°C)



05972\_A\_DE

Lowara, Flygt and Vogel Pumpen are trademarks of Xylem Inc. or one of its subsidiaries. Goulds is a registered trademark of Goulds Pumps, Inc. and is used under license.

N.	Descrizione It	Description en	Description fr	Beschreibung de	Descripción es	Descrição pt
	<b>33-125SV..B (180 °C)</b>					
1	Motore	Motor	Moteur	Motor	Motor	Motor
2	Lanterna	Adaptor	Lanterne	Motorlaterne	Adaptador	Adaptador
4	Tappi	Plugs	Bouchons	Stopfen	Tapones	Tampões
5	Disco porta tenuta	Seal housing plate	Disque de support garniture	Dichtungsdeckel	Disco de alojamiento sello	Disco porta-vedante
6	Testata HT	Head HT	Tête Ht	Kopf HT	Cabecal HT	Cabeça HT
7	Molla	Spring	Ressort	Feder	Muelle	Mola
8	Girante ridotta	Reduced impeller	Roue réduite	Lauftrad, reduzierter Durchmesser	Rodete, reducido	Impulsor reduzido
9	Girante piena	Full impeller	Roue pleine	Lauftrad, voller Durchmesser	Rodete, completo	Impulsor completo
10	Camicia	Sleeve	Chemise	Gehäuse	Camisa	Camisa
10A	Camicia per camera HT	Sleeve for chamber HT	Chemise pour chambre HT	Laufbuchse für Kammer HT	Camisa para cámara HT	Camisa para câmara HT
11	Albero	Shaft	Arbre	Welle	Árbol	Veio
14	Corpo pompa	Pump body	Corps de pompe	Pumpengehäuse	Caja bomba	Corpo da bomba
15	Diffusore boccola carbone	Diffuser carbon bush	Diffuseur douille carbone	Diffusor und Büchse, Kohle	Difusor bucha carbón	Difusor bucha carvão
16	Diffusore finale	Last stage diffuser	Diffuseur dernier étage	Enddiffusor	Difusor final	Difusor final
20	Kit tenuta mecc. + OR	Mechanical seal + OR kit	Kit garniture mec. + joints toriques	Gleitringdichtung + O-Ring [Satz]	Kit sello mec. + junta tórica	Kit vedante mec. + OR
21	Kit guarnizioni OR	O ring kit	Kit joints toriques	Dichtungssatz	Kit juntas tóricas	Kit guarnições OR
23	Anello sollevamento	Lifting ring	Anneau de levage	Huböse	Anillo de elevación	Anel de suspensão
26	Kit coppia di semigiunti	Pair of half coupling kit	Kit paire de demi-manchons	Kupplung [Satz]	Kit par de semijuntas	Kit par de semi-juntas
27	Kit protezione giunto	Coupling guard kit	Kit protection manchon	Kupplungsschutz [Satz]	Kit protección junta	Kit protecção junta
28	Kit tamburo reggispinta	Thrust drum kit	Kit tambour butée	Drucklagerscheibe [Satz]	Kit tambor de empuje	Kit tambor de impulso
29	Kit bloccaggio giranti	Impeller locking kit	Kit blocage roues	Lauftrad Halt [Satz]	Kit bloqueo rodetes	Kit bloqueio impulsores
30	Kit bussola tenuta	Bush seal kit	Kit douille garniture	Gleitringdichtungsarretierung und mitnehmer	Kit casquillo sello	Kit bucha vedante
31	Kit tiranti	Tie rods kit	Kit tirants	Zugstangen [Satz]	Kit tirantes	Kit tirantes
32	Kit supporto boccola Widia	Support tungsten bush kit	Kit support douille Widia	Widia Halterung [Satz]	Kit soporte casquillo Widia	Kit suporte com tungstênio bucha
33	Kit diffusore boccola Widia	Diffuser tungsten bush kit	Kit diffuseur douille Widia	Diffusor mit Widia Büchse [Satz]	Kit difusor casquillo Widia	Kit difusor com tungstênio bucha
34	Kit parti di usura	Wear parts kit	Kit parties d'usure	Verschleißteile [Satz]	Kit piezas de desgaste	Kit peças desgastáveis
35	Anello per camicie	Sleeve ring	Anneau pour chemises	Ringhülse	Anillo para camisas	Anel para camisas
39	Eliminatore aria	Air Vent	Purgeur d'Air	Luft-Entlüfter	Purgador de Aire	Purgador de ar
40	Kit distanziali per albero	Kit spacers for shaft	Kit entretoises pour arbre	Distanzstücken für Welle [Satz]	Kit distanciadores para eje	Kit distanciadores para eixo
41	Flangia per camera HT	Flange for chamber HT	Bride pour chambre HT	Flansch für Kammer HT	Brida para cámara HT	Flange para câmara HT
42	Kit distanziali per camera HT	Kit spacers for chamber HT	Kit entretoises pour chambre HT	Distanzstücken für Kammer HT [Satz]	Kit distanciadores para cámara HT	Kit distanciadores para câmara HT
HT	Alta Temperatura	High Temperature	Haute Température	Hochttemperatur	Altas Temperaturas	Temperatura Elevada
N.	<b>Beschrijving nl</b>	<b>Περιγραφή el</b>	<b>Açıklama tr</b>	<b>Kuvas fi</b>	<b>Описание ru</b>	<b>Opis pl</b>
	<b>33-125SV..B (180 °C)</b>					
1	Motor	Πλήρης κινητήρας	Motor	Moottori	Двигатель	Silnik
2	Lantaanstuk	Μπρακέτο	Adaptör	Sovitin	Крестовина	Piasta
4	Pluggen	Σετ ταπών	Tapalar	Tulpat	Пробки	Zatyczki
5	Dichtingssteunplaat	Δίσκος μηχανικού στυπιοθλίγτη	Sızdırmazlık elemanı disk	Tiivsteen kannatuslevy	Пластина держателя прокладки	Tarcza uszczelki
6	Kop HT	Κεφαλή HT	Kafa HT	Johtaja HT	Головка HT	Głowica HT
7	Veer	Έλασμα	Yay	Jousi	Пружина	Sprężyna
8	Waaier met verkleinde diameter	Πτερόγιο μειωμένης διαμέτρου	Küçük boylu pompa rotoru	Pieni juoksupyörä	Уменьшенное рабочее колесо	Wirnik niepełny
9	Volle waaier	Πτερόγιο πλήρους διαμέτρου	Tam boyulu pompa rotoru	Täydellinen juoksupyörä	Полное рабочее колесо	Wirnik pełny
10	Mantel	Κέλυφος	Gömlek	Muhvi	Муфта	Plaszcz
10A	Mantel voor kamer HT	Κέλυφος για Θάλαμος HT	Gömlek kamera HT	Muhvi kammio HT	Кашуля для Камера HT	Plaszcz do komora HT
11	As	Άξονας	Mil	Akseli	Вал	Wał
14	Pomphuis	Σώμα αντλίας	Pompa gövdesi	Pumpun runko	Корпус насоса	Korpus pompy
15	Diffusor koollager	Πτερόγιο εκτροπής με κουζινέτο	Karbon burçlu difüzör	Diffuusori ja hiiliholkki	Диффузор втулки угля	Dyfuzor tulejki wegla
16	Diffusor laatste trap	Τελευταίο πτερόγιο εκτροπής	Son difüzör	Loppuvaiheen diffusori	Конечный диффузор	Dyfuzor końcowy
20	Set mech. asafdichting + O-ring	Μηχανικός στυπιοθλίγτης και ροδέλες στεγανοποίησης	Mekanik salmastra kiti + O-Ring	Mek. tiiviste + O-rengassarja	Комплект мех.прокладки + OR	Zestaw uszcz. mech. + OR
21	Set O-ringafdichtingen	Σετ ροδέλες στεγανοποίησης	O-Ring kiti	O-rengassarja	Комплект кольцевых прокладок OR	Zestaw uszczelkek OR
23	Hijs ring	Άρση δαχτυλίδι	Cihaz kaldırma	Nostorengas	Подъемные кольца	Pierścienie noszenia
26	Set koppelingsheften	Σετ σταθερού συνδέσμου	Çift yarım manşon kiti	Liitinsarja	Комплект пары полумуфт	Zestaw pary półzłączy
27	Set koppelingsbescherming	Όμματα προστασίας σταθερού συνδέσμου	Manşon koruma kiti	Liitoksen suojarja	Комплект защиты муфт	Zestaw ochronny złącza
28	Set druklagertrommel	Σετ ωστικού εμβόλου	Basınç yatağı tambur kiti	Rumpusarja	Комплект упорного барабана	Testaw bębna łożyska oporowego
29	Set waaierblokkeringen	Σετ ασφάλισης πτερωτών	Pompa rotorlarını sabitleme kiti	Juoksupyörien kiinnitysarja	Комплект блокировки раб. колес	Zestaw blokujący wirniki
30	Set afdichtingsbus	Σετ κουζινέτου μηχανικού στυπιοθλίγτη	Sızdırmazlık elemanı burcu kiti	Holkki ja tiiviste	Комплект втулки уплотнения	Zestaw busoli uszczel.
31	Set trekstangen	Σετ ράβδων σύνδεσης	Gergi çubuğu kiti	Vetotankosarja	Комплект тяг	Zestaw napinaczy
32	Set Widia steunbus	Σετ κάτω κουζινέτου	Tungsten burç mesnedi kiti	Kannatin ja kovametalliholkki	Комплект опоры втулки Widia	Zestaw wspornika tulejki Wolfram
33	Set Widia diffusorbus	Υγίου εκτροπής με κουζινέτο και δακτύλο	Tungsten burçlu difüzör kiti	Diffuusori ja kovametalliholkki	Комплект диффузоравтулки Widia	Zestaw dyfuzora tulejki Wolfram
34	Set slijtonderdelen	Σετ δακτυλίων τριβής	Aşınma parçaları kiti	Kulumisiosien sarja	Комплект изнашиваемых частей	Zestaw części podł. zużyciu
35	Ring voor mantels	Σύνδεσμος κελύφων	Muhvirengas	Muhvirengas	Кольцо муфты	Pierścienie do płaszczy
39	Ontluchters	Αεραγωγός	Hava boşaltma deliği	Ilma venttiilin	Выход воздуха	Powietrza ujście
40	Set afstandsstukken des as	Σετ αποστάτες για τον άξονα	Milil için ara halkası Kiti	Välilevyt akselin sarja	Комплект распорки для вал	Zestaw dystansowa dla wał
41	Flens des kamer HT	εξέχων γύρος για τον Θάλαμος HT	Flans Kamera HT	Laippa kammio HT	Фланец Камера HT	kołnierz, komora HT
42	Set afstandsstukken des kamer HT	Σετ αποστάτες για τον Θάλαμος HT	Ara parçalar Kamera HT Kiti	Välilevyt kammio HT sarja	Комплект распорки для Камера HT	Zestaw dystansowa dla komora HT
HT	Hoge Temperaturen	Υψηλής θερμοκρασίας	Yüksek isi	Korkea lämpötila	Высокая температура	Wysokiej Temperatury

## 33SVNB 2 Pole (33SVNB/D: motors IE3 fitted)

ELP 2 P, 3 ~										
N - Version	33SV1/1ANB	33SV1NB	33SV2/2ANB	33SV2/1ANB	33SV2NB	33SV3/2ANB	33SV3/1ANB	33SV3NB	33SV4/2ANB	33SV4/1ANB
T(IE2) ->	10157001W	10157002W	10157003W	10157004W	10157005W	10157006W	10157007W	10157008W	10157009W	10157010W
T(IE3) ->	10168001W	10168002W	10168003W	10168004W	10168005W	10168006W	10168007W	10168008W	10168009W	10168010W
	33SV4NB	33SV5/2ANB	33SV5/1ANB	33SV5NB	33SV6/2ANB	33SV6/1ANB	33SV6NB	33SV7/2ANB	33SV7/1ANB	33SV7NB
T(IE2) ->	10157011W	10157012W	10157013W	10157014W	10157015W	10157016W	10157017W	10157018W	10157019W	10157020W
T(IE3) ->	10168011W	10168012W	10168013W	10168014W	10168015W	10168016W	10168017W	10168018W	10168019W	10168020W
	33SV8/2ANB	33SV8/1ANB	33SV8NB	33SV9/2ANB	33SV9/1ANB	33SV9NB				
T(IE2) ->	10157021W	10157022W	10157023W	10157024W	10157025W	10157026W				
T(IE3) ->	10168021W	10168022W	10168023W	10168024W	10168025W	10168026W				
Motor power	2,2	3,0	4,0	4,0	5,5	5,5	7,5	7,5	7,5	11,0
kw >	11,0	11,0	11,0	15,0	15,0	15,0	15,0	15,0	18,5	18,5
	18,5	18,5	22,0	22,0	22,0	22,0				

### Single Unit and Kit

Stages >	1	2	3	4	5	6	7	8	9
10 Sleeve PN40	156408600	156408610	156408620	156408630	156408640	156408650	156408660	156408670	156408680
10A Sleeve chamber	156408600	156408600	156408600	156408600	156408600	156408600	156408600	156408600	156408600
11 Shaft	165045650	165045660	165045670	165045680	165045690	165045700	165045710	165045720	165045730
31 Tie rods kit SVN D16	KL22AAV	KL22AAW	KL22AAX	KL22AAY	KL22AAZ	KL22AA0	KL22AA1	KL22AA2	KL22AA3

### Motor, Coupling, Adaptor

**1	kw >	2,2	3,0	4,0	5,5	7,5	11,0	15,0	18,5	22,0
Motor 2P, 3 ->	50001RD00	50002RF00	50008VG00	50013VE00	50017VB00	50019VE00	50024VB00	50025VB00	50026VE00	50026VE00
Mot.2P,3-, IE3 >	50A01RD00	50A02RF00	50A08VL00	50A13VE00	50A17VB00	50A19VE00	50A24VB00	50A25VB00	50A26VE00	50A26VE00
2 Adaptor	161453600	161453620	161453620	161453640	161453640	161453660	161453660	161453660	161453660	161453660
23 Lifting bracket	-	-	-	161441050	161441050	161441060	161441060	161441060	161441060	161441060
26 Coupling	KL10AAA	KL10AAB	KL10AAB	KL10AAC	KL10AAC	KL10AAD	KL10AAD	KL10AAD	KL10AAE	KL10AAE
27 Coupling guard	KL33AAA	KL33AAA	KL33AAA	KL33AAB	KL33AAB	KL33AAC	KL33AAC	KL33AAC	KL33AAC	KL33AAC
39 Air Vent	KL38AAE	KL38AAE	KL38AAE	KL38AAE	KL38AAE	KL38AAE	KL38AAE	KL38AAE	KL38AAE	KL38AAE

### Wear parts, pump body

	->33SV4	->33SV5	->33SV9
drum, impeller stop,	1 bearing	2 bearing	2 bearing
impeller locking	no drum	no drum	drum
* 34 Wear Parts Kit	KL35AA9	KL35ABA	KL35ABB
14 Pump body PN25-40	151302020	151302020	151302020
28 Drum	EPDM HT	-	KL41AA9
	FPM	-	KL41AAD
29 Impeller locking	KL41AAG	KL41AAG	-

### Mech seal D22 + OR

*20	Materials ->	Q1AEGG	KL01AEW	STD -> Q1AEGG - OR EPDM HT
		Q1AVGG	KL01AEX	
		Q1Q1VGG	KL01AC3	

### Common, Single Unit and Kit

4	Plugs	EPDM HT	KL34AAAY	
5	Seal housing plate		160102850	
6	Upper head		161440020	
7	Spring		169100190	
*8	Reduced impeller A		150702820	
*9	Full impeller		150702740	
15	Diffuser carbon bush		152801800	
*21	OR	EPDM HT	KL02ACB	1-2 Sleeve With Elastomers for Drum Pumps 33-46SV
30	Bush seal		KL41AA8	
32	Support tungsten bush SVN		KL16AAE	
*33	Diffuser tungsten bush		KL05AC6	From 33SV4, included
35	Sleeve ring		-	
40	Kit spacers for shaft		KL07AAC	
41	Flange for chamber HT		160103812	
42	Kit spacers for chamber HT		KL07AAF	

\* Recommended spare parts - Parti di ricambio consigliate

\* Pièces détachées conseillées - Empfohlene Ersatzteile

\*\* Motor spare parts: see motor lists - Parti di ricambio motore: vedi liste motore

\*\* Pièces détachées Moteur : voir listes moteur - Motor-Ersatzteile: gem. Motorlisten

3392SV\_NB\_5\_July12\_EdB

## 46SVNB 2 Pole (46SVNB/D: motors IE3 fitted)

ELP 2 P, 3 ~										
<b>N - Version</b>	<b>46SV1/1ANB</b>	<b>46SV1NB</b>	<b>46SV2/2ANB</b>	<b>46SV2NB</b>	<b>46SV3/2ANB</b>	<b>46SV3NB</b>	<b>46SV4/2ANB</b>	<b>46SV4NB</b>	<b>46SV5/2ANB</b>	<b>46SV5NB</b>
T(IE2) ->	10157201W	10157202W	10157203W	10157204W	10157205W	10157206W	10157207W	10157208W	10157209W	10157210W
T(IE3) ->	10168201W	10168202W	10168203W	10168204W	10168205W	10168206W	10168207W	10168208W	10168209W	10168210W
	<b>46SV6/2ANB</b>	<b>46SV6NB</b>	<b>46SV7/2ANB</b>	<b>46SV7NB</b>	<b>46SV8/2ANB</b>	<b>46SV8NB</b>	<b>46SV9/2ANB</b>	<b>46SV9NB</b>		
T(IE2) ->	10157211W	10157212W	10157213W	10157214W	10157215W	10157216W	10157217W	10157218W		
T(IE3) ->	10168211W	10168212W	10168213W	10168214W	10168215W	10168216W	10168217W	10168218W		
<b>Motor power</b>	<b>3.0</b>	<b>4.0</b>	<b>5.5</b>	<b>7.5</b>	<b>11.0</b>	<b>11.0</b>	<b>15.0</b>	<b>15.0</b>	<b>18.5</b>	<b>18.5</b>
kW >	22.0	22.0	30.0	30.0	30.0	30.0	30.0	37.0		

### Single Unit and Kit

Stages >		1	2	3	4	5	6	7	8	9
10	Sleeve PN40	156408600	156408610	156408620	156408630	156408640	156408650	156408660	156408670	156408680
10A	Sleeve chamber	156408600	156408600	156408600	156408600	156408600	156408600	156408600	156408600	156408600
11	Shaft	165045650	165045660	165045670	165045680	165045690	165045700	165045710	165045720	165045730
31	Tie rods kit SVN D16	KL22AAV	KL22AAW	KL22AAX	KL22AAY	KL22AAZ	KL22AA0	KL22AA1	KL22AA2	KL22AA3

### Motor, Coupling, Adaptor

**4	Motor power >	<b>3.0</b>	<b>4.0</b>	<b>5.5</b>	<b>7.5</b>	<b>11.0</b>	<b>15.0</b>	<b>18.5</b>	<b>22.0</b>	<b>30.0</b>	<b>37.0</b>
	Mot.2P,3~, IE2 >	50002RF00	50008VG00	50013VE00	50017VB00	50019VE00	50024VB00	50025VB00	50026VE00	107242100	107242200
	Mot.2P,3~, IE3 >	50A02RF00	50A08VL00	50A13VE00	50A17VB00	50A19VE00	50A24VB00	50A25VB00	50A26VE00	107242600	107242700
2	Adaptor	161453620	161453620	161453640	161453640	161453660	161453660	161453660	161453660	161453680	161453680
23	Lifting bracket	-	-	161441050	161441050	161441060	161441060	161441060	161441060	161441070	161441070
26	Coupling	KL10AAB	KL10AAB	KL10AAC	KL10AAC	KL10AAD	KL10AAD	KL10AAD	KL10AAE	KL10AAF	KL10AAF
27	Coupling guard	KL33AAA	KL33AAA	KL33AAB	KL33AAB	KL33AAC	KL33AAC	KL33AAC	KL33AAC	KL33AAC	KL33AAC
39	Air Vent	KL38AAE	KL38AAE	KL38AAE	KL38AAE	KL38AAE	KL38AAE	KL38AAE	KL38AAE	KL38AAE	KL38AAE

### Wear parts, pump body drum, impeller stop, impeller locking

		->46SV3	->46SV4	->46SV9
		1 bearing no drum	1 bearing drum	2 bearing drum
*34	Wear Parts Kit	KL35ABE	KL35ABX	KL35ABG
14	Pump body PN16-40	151302060	151302060	151302060
28	Drum	EPDM HT	-	KL41ABA
		FPM	-	KL41AAE
29	Impeller locking	KL41AAG	-	-

### Mech seal D22 + OR

*20	Materials ->	Q1AEGG	KL01AEW	STD -> Q1AEGG - OR EPDM HT
		Q1AVGG	KL01AEX	
		Q1Q1VGG	KL01AC3	

### Common, Single Unit and Kit

4	Plugs	EPDM HT	KL34AAY	
5	Seal housing plate		160102850	
6	Upper head		161440020	
7	Spring		169100190	
*8	Reduced impeller A		150702830	
*9	Full impeller		150702750	
15	Diffuser carbon bush		152801810	
*21	OR	EPDM HT	KL02ACB	1-2 Sleeve With Elastomers for Drum Pumps 33-46SV
30	Bush seal		KL41AA8	
32	Support tungsten bush SVN		KL16AAF	
*33	Diffuser tungsten bush		KL05AC7	From 46SV5, included
35	Sleeve ring		-	
40	Kit spacers for shaft		KL07AAC	
41	Flange for chamber HT		160103812	
42	Kit spacers for chamber HT		KL07AAF	

\* Recommended spare parts - Parti di ricambio consigliate

\* Pièces détachées conseillées - Empfohlene Ersatzteile

\*\* Motor spare parts: see motor lists - Parti di ricambio motore: vedi liste motore

\*\* Pièces détachées Moteur : voir listes moteur - Motor-Ersatzteile: gem. Motorlisten

3392SV\_NB\_5\_July12\_EdB

## 66SVNB 2 Pole (66SVNB/D: motors IE3 fitted)

ELP 2 P, 3 ~										
N - Version T(IE2) -> T(IE3) ->  T(IE2) -> T(IE3) ->	66SV1/1ANB	66SV1NB	66SV2/2ANB	66SV2/1ANB	66SV2NB	66SV3/2ANB	66SV3/1ANB	66SV3NB	66SV4/2ANB	66SV4/1ANB
	10157401W	10157402W	10157403W	10157404W	10157405W	10157406W	10157407W	10157408W	10157409W	10157410W
	10168401W	10168402W	10168403W	10168404W	10168405W	10168406W	10168407W	10168408W	10168409W	10168410W
	66SV4NB	66SV5/2ANB	66SV5/1ANB	66SV5NB	66SV6/2ANB	66SV6/1ANB	66SV6NB	66SV7/2ANB	66SV7/1ANB	66SV7NB
	10157411W	10157412W	10157413W	10157414W	10157415W	10157416W	10157417W	10157418W	10157419W	10157420W
10168411W	10168412W	10168413W	10168414W	10168415W	10168416W	10168417W	10168418W	10168419W	10168420W	
Motor power kW >	4.0 22.0	5.5 30.0	7.5 30.0	11.0 30.0	11.0 30.0	15.0 30.0	15.0 37.0	18.5 37.0	18.5 37.0	22.0 45.0

### Single Unit and Kit

Stages >		1	2	3	4	5	6	7
10	Sleeve PN40	156408750	156408760	156408770	156408780	156408790	156408800	156408810
10A	Sleeve chamber	156408832	156408832	156408832	156408832	156408832	156408832	156408832
11	Shaft	165045380	165045390	165045680	165045410	165045420	165045430	165045440
31	Tie rods kit SVN D16	L=390	L=480	L=570	L=660	L=750	KL22AXQ	L=930

### Motor, Coupling, Motor Adaptor

**1	kW >	4.0	5.5	7.5	11.0	15.0	18.5	22.0	30.0	37.0	45.0
	Mot.2P,3~, IE2 >	50008VG00	50013VE00	50017VB00	50019VE00	50024VB00	50025VB00	50026VE00	107242100	107242200	107242300
	Mot.2P,3~, IE3 >	50A08VL00	50A13VE00	50A17VB00	50A19VE00	50A24VB00	50A25VB00	50A26VE00	107242600	107242700	107242800
2	Adaptor	161453620	161453640	161453640	161453660	161453660	161453660	161453660	161453680	161453680	161453700
23	Lifting bracket	-	161441050	161441050	161441060	161441060	161441060	161441060	161441070	161441070	161441070
26	Coupling	KL10AAB	KL10AAC	KL10AAC	KL10AAD	KL10AAD	KL10AAD	KL10AAE	KL10AAF	KL10AAF	KL10AAF
27	Coupling guard	KL33AAA	KL33AAB	KL33AAB	KL33AAC	KL33AAC	KL33AAC	KL33AAC	KL33AAC	KL33AAC	KL33AAC
39	Air Vent	KL38AAF	KL38AAF	KL38AAF	KL38AAF	KL38AAF	KL38AAF	KL38AAF	KL38AAF	KL38AAF	KL38AAF

### Wear parts, pump body drum (piston), impeller halt, impeller locking

	->66SV2	->66SV3	->66SV6	->66SV7
	1 bearing no drum	1 bearing drum	2 bearing drum	3 bearing drum
*34	Wear Parts kit	KL35ABL	KL35ABY	KL35ABM
14	Pump body PN25	151302120	151302120	151302120
28	Drum EPDM HT FPM	-	KL41ABB KL41AAF	KL41ABB KL41AAF
29	Impeller locking	KL41AAG	-	-

### Mechanical seal D22 + OR

*20	Materials ->	Q1AEGG Q1AVGG Q1Q1VGG	KL01AEW KL01AEX KL01AC3	STD -> Q1AEGG - OR EPDM HT
-----	--------------	-----------------------------	-------------------------------	----------------------------

### Common, Single Unit and Kit

4	Plugs	EPDM HT	KL34AAY	
5	Seal housing plate		160102850	
6	Upper head		161440040	
7	Spring		169100210	
*8	Reduced impeller A		150702840	
*9	Full impeller		150702760	
15	Diffuser carbon bush		152801820	
*21	OR	EPDM HT	KL02ACC	
30	Bush seal		KL41AA8	
32	Support tungsten bush SVN		KL16AAG	
*33	Diffuser tungsten bush		KL05AC8	From 66SV4, included
40	Kit spacers for shaft		KL07AAD	
41	Flange for chamber HT		160103812	
42	Kit spacers for chamber HT		KL07AAF	

\* Recommended spare parts - Parti di ricambio consigliate

\* Pièces détachées conseillées - Empfohlene Ersatzteile

\*\* Motor spare parts: see motor lists - Parti di ricambio motore: vedi liste motore

\*\* Pièces détachées Moteur : voir listes moteur - Motor-Ersatzteile: gem. Motorlisten

3392SV\_NB\_5\_July12\_EdB

## 92SVNB 2 Pole (92SVNB/D: motors IE3 fitted)

ELP 2 P, 3 ~										
N - Version T(IE2) -> T(IE3) ->  T(IE2) -> T(IE3) ->	92SV1/1ANB	92SV1NB	92SV2/2ANB	92SV2NB	92SV3/2ANB	92SV3NB	92SV4/2ANB	92SV4NB	92SV5/2ANB	92SV5NB
	10157601W	10157602W	10157603W	10157604W	10157605W	10157606W	10157607W	10157608W	10157609W	10157610W
	10168601W	10168602W	10168603W	10168604W	10168605W	10168606W	10168607W	10168608W	10168609W	10168610W
	92SV6/2ANB	92SV6NB	92SV7/2ANB							
	10157611W	10157612W	10157613W							
	10168611W	10168612W	10168613W							
Motor power kW >	5.5	7.5	11.0	15.0	18.5	22.0	30.0	30.0	37.0	37.0
	45.0	45.0	45.0							

### Single Unit and Kit

Stages >	1	2	3	4	5	6	7
10 Sleeve, PN40	156408750	156408760	156408770	156408780	156408790	156408800	156408810
10A Sleeve chamber	156408832	156408832	156408832	156408832	156408832	156408832	156408832
11 Shaft	165045380	165045390	165045680	165045410	165045420	165045430	165045440
31 Tie rods kit SVN D16 --> KL22	L=390	L=480	L=570	L=660	L=750	KL22AXQ	L=930

### Motor, Coupling, Motor Adaptor

**1	kW ->	5.5	7.5	11.0	15.0	18.5	22.0	30.0	37.0	45.0
Mot.2P,3~, IE2 >	50013VE00	50017VB00	50019VE00	50024VB00	50025VB00	50026VE00	107242100	107242200	107242300	
Mot.2P,3~, IE3 >	50A13VE00	50A17VB00	50A19VE00	50A24VB00	50A25VB00	50A26VE00	107242600	107242700	107242800	
2 Adaptor	161453640	161453640	161453660	161453660	161453660	161453660	161453680	161453680	161453700	
23 Lifting bracket	161441050	161441050	161441060	161441060	161441060	161441060	161441070	161441070	161441070	
26 Coupling	KL10AAC	KL10AAC	KL10AAD	KL10AAD	KL10AAD	KL10AAE	KL10AAF	KL10AAF	KL10AAF	
27 Coupling guard	KL33AAB	KL33AAB	KL33AAC	KL33AAC	KL33AAC	KL33AAC	KL33AAC	KL33AAC	KL33AAC	
39 Air Vent	KL38AAF	KL38AAF	KL38AAF	KL38AAF	KL38AAF	KL38AAF	KL38AAF	KL38AAF	KL38AAF	

### Wear parts, pump body drum, impeller stop, impeller locking

	->92SV2	->92SV3	->92SV6	->92SV8
1 bearing no drum		1 bearing drum	2 bearing drum	3 bearing drum
*34 Wear parts Kit	KL35ABR	KL35ABZ	KL35ABT	KL35ABV
14 Pump body PN25-40	151302120	151302120	151302120	151302120
28 Drum EPDM HT	-	KL41ABB	KL41ABB	KL41ABB
FPM	-	KL41AAF	KL41AAF	KL41AAF
29 Impeller locking	KL41AAG	-	-	-

### Mechanical seal D22 + OR

*20	Materials ->	Q1AEGG	KL01AEW	STD -> Q1AEGG - OR EPDM HT
		Q1AVGG	KL01AEX	
		Q1Q1VGG	KL01AC3	

### Common, Single Unit and Kit

4	Plugs	EPDM HT	KL34AAY	
5	Seal housing plate		160102850	
6	Upper head		161440040	
7	Spring		169100210	
*8	Reduced impeller A		150702850	
*9	Full impeller		150702770	
15	Diffuser carbon bush		152801830	
*21	OR	EPDM HT	KL02ACC	
30	Bush seal		KL41AA8	
32	Support tungsten bush SVN		KL16AAH	
*33	Diffuser tungsten bush		KL05AC9	From 92SV4, included
40	Kit spacers for shaft		KL07AAD	
41	Flange for chamber HT		160103812	
42	Kit spacers for chamber HT		KL07AAF	

\* Recommended spare parts - Parti di ricambio consigliate

\* Pièces détachées conseillées - Empfohlene Ersatzteile

\*\* Motor spare parts: see motor lists - Parti di ricambio motore: vedi liste motore

\*\* Pièces détachées Moteur : voir listes moteur - Motor-Ersatzteile: gem. Motorlisten

3392SV\_NB\_5\_July12\_EdB