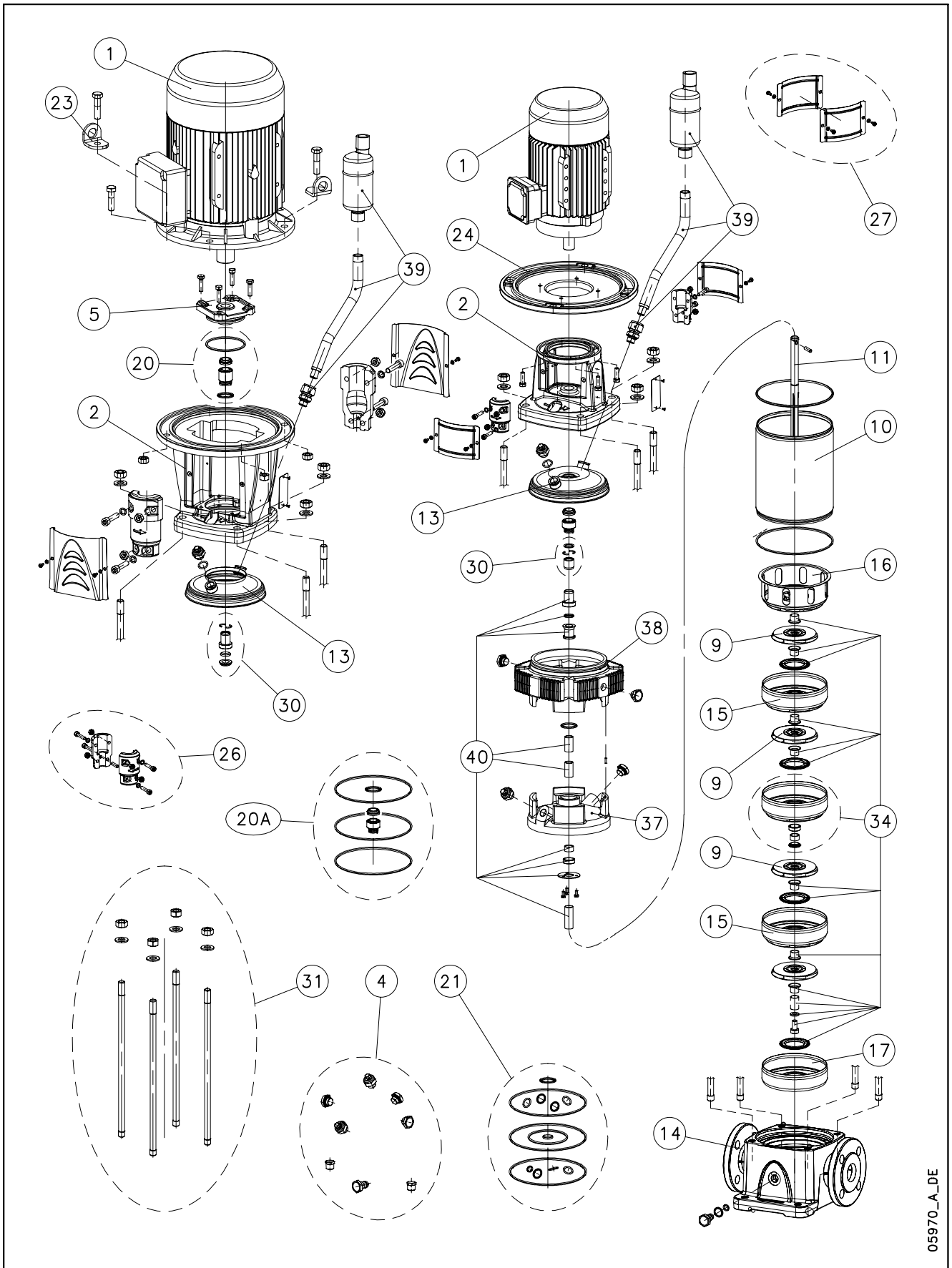


1, 3, 5, 10, 15, 22 SV.B (180°C)



05970_A_DE

Lowara, Vogel Pumpen are trademarks of Xylem Inc. or one of its subsidiaries.
Goulds is a registered trademark of Goulds Pumps, Inc. and is used under license.

N.	Descrizione It	Description en	Description fr	Beschreibung de	Descripción es	Descrição pt
	1-22SV..B (180 °C)					
1	Motore	Motor	Moteur	Motor	Motor	Motor
2	Lanterna	Adaptor	Lanterne	Motorlaterne	Adaptador	Adaptador
4	Tappi	Plugs	Bouchons	Stopfen	Tapones	Tampões
5	Portatenuta superiore	Upper holder	Disque supérieure	Oberer dichtungsdeckel	Disco superior	Disco superior
9	Girante	Impeller	Roue	Lauftrad	Rodete	Impulsor
10	Camicia	Sleeve	Chemise	Gehäuse	Camisa	Camisa
11	Albero	Shaft	Arbre	Welle	Árbol	Veio
13	Disco porta tenuta	Seal housing disc	Disque de garniture	Dichtungsdeckel	Disco de alojamiento sello	Disco porta-vedante
14	Corpo pompa	Pump body	Corps de pompe	Pumpengehäuse	Caja bomba	Corpo da bomba
15	Diffusore	Diffuser	Diffuseur	Diffusor	Difusor	Difusor
16	Diffusore finale	Last stage diffuser	Diffuseur dernier étage	Enddiffusor	Difusor final	Difusor final
17	Scatola stadio iniziale	Initial stage box	Box premier étage	Erste Stufe Diffusor	Caja etapa inicial	Carcaça primeira célula
20 - 20A	Kit tenuta mecc. + OR	Mechanical seal + OR kit	Kit garniture méc. + joints toriques	Gleitringsdichtung + O-Ring [Satz]	Kit sello mec. + junta tórica	Kit vedante mec. + OR
21	Kit guarnizioni OR	O ring kit	Kit joints toriques	Dichtungssatz	Kit juntas tóricas	Kit guarnições OR
23	Staffa sollevamento	Lifting bracket	Support de levage	Hebeösen	Soporte de elevación	Suporte de suspensão
24	Flangia motore	Motor flange	Bride moteur	Motorflansch	Brida motor	Flange motor
26	Kit coppia di semigiunti	Pair of half coupling kit	Kit paire de demi-manchons	Kupplung [Satz]	Kit par de semijuntas	Kit par de semi-juntas
27	Kit protezione giunto	Coupling guard kit	Kit protection manchon	Kupplungsschutz [Satz]	Kit protección junta	Kit protecção junta
30	Kit bussola tenuta	Bush seal kit	Kit douille garniture	Gleitringsdichtungsarretierung und mitnehmer	Kit casquillo sello	kit bucha vedante
31	Kit tiranti	Tie rods kit	Kit tirants	Zugstangen [Satz]	Kit tirantes	Kit tirantes
34	Kit parti di usura	Wear parts kit	Kit parties d'usure	Verschleißteile [Satz]	Kit piezas de desgaste	Kit peças desgastáveis
37	Camera sup. HT	Upper chamber HT	Chambre supérieur HT	Obere Kammer HT	Cámara superior HT	Cámara superior HT
38	Camera inf. HT.	Lower chamber HT	Chambre inférieur HT	Untere Kammer HT	Cámara inferior HT	Cámara inferior HT
39	Eliminatore aria	Air Vent	Purgeur d'Air	Luft-Entlüfter	Purgador de Aire	Purgador de ar
40	Kit distanziali per albero	Kit spacers for shaft	Kit entretoises pour arbre	Distanzstücken für Welle [Satz]	Kit distanciadores para eje	Kit distanciadores para eixo
HT	Alta Temperatura	High Temperature	Haute Température	Hochtemperatur	Altas Temperaturas	Temperatura Elevada
N.	Beschrijving nl	Περιγραφή el	Açıklama tr	Kuvaus fi	Описание ru	Opis pl
	1-22SV..B (180 °C)					
1	Motor	Πλήρης κινητήρας	Motor	Moottori	Двигатель	Silnik
2	Lantaarnstuk	Μπρακέτο	Adaptör	Sovitin	Крестовина	Piasta
4	Pluggen	Σετ ταπών	Tapalar	Tulpat	Пробки	Zatyczki
5	Bovenste plaat	Ανώτερος Δίσκος	Üst disk	Ylempi levy	Верхний держатель дисков	Tarcza górna
9	Waaier	στροφέο	Pompa rotoru	Juoksupyörä	рабочее колесо	Wirnik
10	Mantel	Κέλυφος	Gömlük	Muhvi	Муфта	Plaszcz
11	As	Άξονας	Mil	Akseli	Вал	Wał
13	Dichtingssteenplaat	Δίσκος μηχανικού στυπιοθλίπτη	Sızdırmazlık elemanı disk	Tiivisteenn kannatuslevy	Пластина держателя прокладки	Tarcza uszczelki
14	Pomphuis	Σώμα αντλίας	Pompa gövdesi	Pumpun runko	Корпус насоса	Korpus pompy
15	Diffusor	Πτερύγιο εκτροπής	Difüzör	Diffusori	Диффузор	Dyfuzor
16	Diffusor laatste trap	Τελευταίο πτερύγιο εκτροπής	Son difüzör	Loppuvaiheen diffusori	Конечный диффузор	Dyfuzor końcowy
17	Kast eerste trap	Πρώτο πτερύγιο εκτροπής	İlk kademe kutusu	Ensivaiheen laatikko	Коробка начальной стадии	Skrzynka początkowego stadium
20-20A	Set mech. asafdichting + O-ring	κόσ στυπιοθλίπτης και ροδέλες στεγανογ	Mekanik salmastra kiti + O-Ring	Mek. tiiviste + O-rengassarja	Комплект мех.прокладки + OR	Zestaw uszcz.mech. + OR
21	Set O-ringafdichtingen	Σετ ροδέλες στεγανοποίησης	O-Ring kiti	O-rengassarja	Комплект кольцевых прокладок OR	Zestaw uszczeltek OR
23	Hijz steun	Άρση ακύκλη	Dirsek Kaldırma	Nosto ylätki	Подъемные кронштейн	Podnoszenia wspornik
24	Motorflens	Μπρακέτο κινητήρα	Motor flanşı	Moottorin laippa	Фланец двигателя	Kolnierz silnika
26	Set koppelingsheften	Σετ σταθερού συνδέσμου	Çift yarım manşon kiti	Liitinsarja	Комплект пары полумуфт	Zestaw pary półzłączy
27	Set koppelingsbescherming	Καλύμματα προστασίας σταθερού συνδέσμου	Manşon koruma kiti	Liitoksen suojussarja	Комплект защиты муфт	Zestaw ochronny złącza
30	Set afdichtingsbus	Σετ κουζινέτου μηχανικού στυπιοθλίπτη	Sızdırmazlık elemanı burcu kiti	Holkki ja tiiviste	Комплект втулки уплотнения	Zestaw busoli uszczel.
31	Set trekstangen	Σετ ράβδων σύνδεσης	Gergi çubuğu kiti	Vetotankosarja	Комплект тяг	Zestaw napinaczy
34	Set slijtonderdelen	Σετ δακτυλίων τριβής	Aşınma parçaları kiti	Kulumisiosien sarja	Комплект изнашиваемых частей	Zestaw części podl. zużyciu
37	Bovenste kamer HT	Άνω Θάλαμος HT	Üst kamera HT	Ylempi kammiö HT	Верхняя Камера HT	Górna komora HT
38	Onderste kamer HT	Κάτω Θάλαμος HT	Ait kamera HT	Alempi kammiö HT	нижний Камера HT	Dolny komora HT
39	Ontluchters	Αεραγωγό	Hava boşaltma deliği	Ilma venttiiliin	Выход воздуха	Powietrza ujście
40	Set afstandstukken des as	Σετ αποστάτες για τον άξονα	Mili için ara halkası Kiti	Välillevyt akselin sarja	Комплект распорки для вал	Zestaw dystansowa dla wał
HT	Hoge Temperaturen	Υψηλής θερμοκρασίας	Yüksek isi	Korkea lämpötila	Высокая температура	Wysokiej Temperatury

1SV NB 2 Pole (1SVNB/D: motors IE3 fitted)

Production date > July 2012

ELP 2 P											
N Version		1SV02NB003	1SV03NB003	1SV04NB003	1SV05NB003	1SV06NB003	1SV07NB003	1SV08NB005	1SV09NB005	1SV10NB005	1SV11NB005
M ~>		1016L183W	1016L184W	1016L185W	1016L186W	1016L187W	1016L188W	1016L189W	1016L190W	1016L191W	1016L192W
T(IE1) ~>		1016L001W	1016L002W	1016L003W	1016L004W	1016L005W	1016L006W	1016L007W	1016L008W	1016L009W	1016L010W
		1SV12NB007	1SV13NB007	1SV15NB007	1SV17NB011	1SV19NB011	1SV22NB011	1SV25NB015	1SV27NB015	1SV30NB015	1SV32NB022
M ~>		1016L193W	1016L194W	1016L196W	1016L198W	1016L200W	1016L203W	1016L206W	1016L208W	1016L211W	1016L213W
T(IE2) ~>		1016L011W	1016L012W	1016L014W	1016L016W	1016L018W	1016L021W	1016L024W	1016L026W	1016L029W	1016L031W
		1016L011W	1016L012W	1016L014W	1016L016W	1016L018W	1016L021W	1016LA02W	1016LA04W	1016LA07W	1016LA1W
T(IE3) ~>		1016LC11W	1016LC12W	1016LC14W	1016LC16W	1016LC18W	1016LC21W	1016LC24W	1016LC26W	1016LC29W	1016LC31W
		1SV34NB022	1SV37NB022								
M ~>		1016L215W	1016L218W								
T(IE2) ~>		1016L033W	1016L036W								
		1016LA11W	1016LA14W								
T(IE3) ~>		1016LC33W	1016LC36W								

Single Unit and Kit

10	Sleeve A316 PN40	156502422	156502422	156502442	156502452	156502462	156502482	156502502	156502522	156502532	156502542	
		156502562	156502582	156502612	156502642	156502682	156502722	156502772	156502802	156502852	156502882	
		156502922	156502962									
11	Shaft A316 PN25	165050122B	165050122B	165050142B	165050152B	165050162B	165050182B	165050202B	165050222B	165050232B	165050242B	
		165050262B	165050282B	165050312B	165050342B	165050382B	165050422B	165050472B	165050502B	165050562B	165050602B	
		165050632B	L=945									
31	Tie rods SVN kit D12	KL22AUR	KL22AUR	KL22AUS	KL22AUT	KL22AUA	KL22AUV	KL22AUW	KL22AUX	KL22AUY	KL22AUZ	
		KL22AU0	KL22AVG	KL22AU2	KL22AU4	KL22AVH	KL22AU7	KL22AU9	KL22AVB	KL22AVE	KL22AVF	
		L=840	L=900									

Motor, Coupling, Motor adaptor

Motor power kW >	0,37	0,37	0,37	0,37	0,37	0,37	0,55	0,55	0,55	0,55
	0,75	0,75	0,75	1,1	1,1	1,1	1,5	1,5	1,5	2,2
	2,2	2,2								

**1	kW >	0,37	0,55	0,75	1,1	1,5	2,2
	Motor 2P, 1 ~>	107230020	107230040	107230100	107230120	107230180	50004HD00
	Motor 2P,3 ~IE2 since 0,75kW >	107230060	107230080	107230150	107230500	50000RD00	50001RD00
		107230060	107230080	107230150	107230500	107240000	107240500
	Motor 2P,3 ~IE3 since 0,75kW >	107230060	107230080	107234000	107234010	107234020	50A01RD00
2	Adaptor	161471050	161471050	161471060	161471060	161471070	161471070
23	Lifting bracket	-	-	-	-	-	-
26	Coupling	KL10ABC	KL10ABC	KL10ABD	KL10ABD	KL10ABE	KL10ABE
27	Coupling guard	KL33AAM	KL33AAM	KL33AAN	KL33AAN	KL33AAP	KL33AAP
39	Air Vent MOT B14	KL38AAB	KL38AAB	KL38AAB	KL38AAB	KL38AAB	KL38AAB

Wear Parts kit

up to model (->)	-> 1SV10	-> 1SV20	-> 1SV27	-> 1SV35	-> 1SV38	
*34	Wear parts	1 bearing	2 bearing	3 bearing	4 bearing	5 bearing
		KL35AEX	KL35AEY	KL35AEZ	KL35AE0	KL35AE1

Mech seal Kit : Seal + sleeve OR

*20A	Materials->	Q1AEGG	KL01AEY	Mech seal std Balanced HT D12 + sleeve OR HT
		Q1AVGG	KL01AEZ	
		Q1Q1VGG	KL01AE0	

Common, Single Unit and kit

4	Plugs	EPDM HT	KL34AAX
5	Upper holder		-
*9	Impeller 1SV A304		150703602
13	Seal housing disc		150102932
14	Pump body		161303352 -> 1-5SVN PN25-40
15	Diffuser		152803112
17	First stage box		152802912
*21	OR	EPDM HT	KL02AB9
24	Motor flange		-
30	Bush seal kit EPDM HT		KL41AA4
	Bush seal kit FPM		KL41AA5
36	Final diffuser		152803012
37	Lower (seal) chamber HT		161441552
38	Upper (seal) chamber HT		161441512
40	Kit spacers for shaft		KL07AAA

* Recommended spare parts - Parti di ricambio consigliate

* Pièces détachées conseillées - Empfohlene Ersatzteile

** Motor spare parts: see motor lists - Parti di ricambio motore: vedi liste motore

** Pièces détachées Moteur : voir listes moteur - Motor-Ersatzteile: gem. Motorlisten

1-22SVNB_5_July12_EdB

3SV NB 2 Pole (3SVNB/D: motors IE3 fitted)

ELP 2 P		3SV02NB003	3SV03NB003	3SV04NB003	3SV05NB005	3SV06NB005	3SV07NB007	3SV08NB007	3SV09NB011	3SV10NB011	3SV11NB011
N Version	M ~>	1016L223W	1016L224W	1016L225W	1016L226W	1016L227W	1016L228W	1016L229W	1016L230W	1016L231W	1016L232W
	T(IE2) ~>	1016L042W	1016L043W	1016L044W	1016L045W	1016L046W	1016L047W	1016L048W	1016L049W	1016L050W	1016L051W
	T(IE3) ~>	1016L042W	1016L043W	1016L044W	1016L045W	1016L046W	1016LC47W	1016LC48W	1016LC49W	1016LC50W	1016LC51W
		3SV12NB011	3SV13NB015	3SV14NB015	3SV16NB015	3SV19NB022	3SV21NB022	3SV23NB022	3SV25NB022	3SV27NB030	3SV29NB030
	M ~>	1016L233W	1016L234W	1016L235W	1016L237W	1016L240W	1016L242W	1016L244W	1016L246W		
	T(IE2) ~>	1016L052W	1016L053W	1016L054W	1016L056W	1016L059W	1016L061W	1016L063W	1016L065W	1016L067W	1016L069W
		1016L052W	1016LA19W	1016LA20W	1016LA22W	1016LA25W	1016LA27W	1016LA29W	1016LA31W	1016LA33W	1016LA35W
	T(IE3) ~>	1016LC52W	1016LC53W	1016LC54W	1016LC56W	1016LC59W	1016LC61W	1016LC63W	1016LC65W	1016LC67W	1016LC69W
		3SV31NB030									
	M ~>										
	T(IE2) ~>	1016L071W									
		1016LA37W									
	T(IE3) ~>	1016LC71W									

Single Unit and Kit

10	Sleeve A316 PN40	156502422	156502422	156502442	156502452	156502462	156502482	156502502	156502522	156502532	156502542
		156502562	156502582	156502602	156502622	156502682	156502702	156502742	156502772	156502802	156502842
		156502862									
11	Shaft A316 PN25	165050122B	165050122B	165050142B	165050152B	165050162B	165050182B	165050202B	165050222B	165050232B	165050242B
		165050262B	165050282B	165050302B	165050322B	165050382B	165050402B	165050442B	165050472B	165050502B	165050552B
		165050582B									
31	Tie rods SVN kit D12	KL22AUR	KL22AUR	KL22AUS	KL22AUT	KL22AAU	KL22AUV	KL22AUW	KL22AUX	KL22AUY	KL22AUZ
		KL22AU0	KL22AVG	KL22AU1	KL22AU3	KL22AVH	KL22AVK	KL22AVL	KL22AU9	KL22AVB	KL22AVD
		KL22AVM									

Motor, Coupling, Motor adaptor

Motor power kW >	0,37	0,37	0,37	0,55	0,55	0,75	0,75	1,1	1,1	1,1
	1,1	1,5	1,5	1,5	2,2	2,2	2,2	2,2	3,0	3,0
	3,0									

**1	kW >	0,37	0,55	0,75	1,1	1,5	2,2	3,0		
	Motor 2P, 1 ~>	107230020	107230040	107230100	107230120	107230180	50004HD00			
	Motor 2P,3 -IE2 since 0,75kW >	107230060	107230080	107230150	107230500	50000RD00	50001RD00	50002RF00		
		107230060	107230080	107230150	107230500	107240000	107240500	107241000		
	Motor 2P,3 -IE3 since 0,75kW >	107230060	107230080	107234000	107234010	107234020	50A01RD00	50A02RD00		
2	Adaptor	161471050	161471050	161471060	161471060	161471070	161471070	161471080		
23	Lifting bracket	-	-	-	-	-	-	-		
26	Coupling	KL10ABC	KL10ABC	KL10ABD	KL10ABD	KL10ABE	KL10ABE	KL10ABF		
27	Coupling guard	KL33AAM	KL33AAM	KL33AAN	KL33AAN	KL33AAP	KL33AAP	KL33AAQ		
39	Air Vent MOT B14	KL38AAB	KL38AAB	KL38AAB	KL38AAB	KL38AAB	KL38AAB	KL38AAB		

Wear Parts kit

up to model (->)	-> 3SV10	-> 3SV20	-> 3SV27	-> 3SV35	
	1 bearing	2 bearing	3 bearing	4 bearing	
*34	Wear parts	KL35AEX	KL35AEY	KL35AEZ	KL35AE0

Mech seal Kit : Seal + sleeve OR

*20A	Materials ->	Q1AEGG	KL01AEY	Mech seal std Balanced HT D12 + sleeve OR HT
		Q1AVGG	KL01AEZ	
		Q1Q1VGG	KL01AE0	

Common, Single Unit and kit

4	Plugs	EPDM HT	KL34AAX	
5	Upper holder		-	
*9	Impeller 3SV A304		150703612	
13	Seal housing disc		150102932	
14	Pump body		161303352	-> 1-5SVN PN25-40
15	Diffuser		152803112	
17	First stage box		152802912	
*21	OR	EPDM HT	KL02AB9	
24	Motor flange		-	
30	Bush seal kit EPDM HT		KL41AA4	
	Bush seal kit FPM		KL41AA5	
36	Final diffuser		152803012	
37	Lower (seal) chamber HT		161441552	
38	Upper (seal) chamber HT		161441512	
40	Kit spacers for shaft		KL07AAA	

* Recommended spare parts - Parti di ricambio consigliate

* Pièces détachées conseillées - Empfohlene Ersatzteile

** Motor spare parts: see motor lists - Parti di ricambio motore: vedi liste motore

** Pièces détachées Moteur : voir listes moteur - Motor-Ersatzteile: gem. Motorlisten

5SV NB 2 Pole (5SVNB/D: motors IE3 fitted)

ELP 2 P										
N Version	5SV02NB003	5SV03NB005	5SV04NB005	5SV05NB007	5SV06NB011	5SV07NB011	5SV08NB011	5SV09NB015	5SV10NB015	5SV11NB015
M ~>	1016L251W	1016L252W	1016L253W	1016L254W	1016L255W	1016L256W	1016L257W	1016L258W	1016L259W	1016L260W
T(IE2) ~>	1016L079W	1016L080W	1016L081W	1016L082W	1016L083W	1016L084W	1016L085W	1016L086W	1016L087W	1016L088W
T(IE3) ~>	1016L079W	1016L080W	1016L081W	1016LC82W	1016LC83W	1016LC84W	1016LC85W	1016LC86W	1016LC87W	1016LC88W
	5SV12NB022	5SV13NB022	5SV14NB022	5SV15NB022	5SV16NB022	5SV18NB030	5SV21NB030	5SV23NB040	5SV25NB040	5SV28NB040
M ~>	1016L261W	1016L262W	1016L263W	1016L264W	1016L265W					
T(IE2) ~>	1016L089W	1016L090W	1016L091W	1016L092W	1016L093W	1016L095W	1016L098W	1016L100W	1016L102W	1016L105W
T(IE3) ~>	1016LA47W	1016LA48W	1016LA49W	1016LA50W	1016LA51W	1016LA53W	1016LA56W	1016L100W	1016L102W	1016L105W
	1016LC89W	1016LC90W	1016LC91W	1016LC92W	1016LC93W	1016LC95W	1016LC98W	1016LD00W	1016LD02W	1016LD05W
	5SV30NB055									
M ~>										
T(IE2) ~>	1016L107W									
	1016L107W									
T(IE3) ~>	1016LD07W									

Single Unit and Kit

10	Sleeve A316 PN40	156502412 156502612 156502972	156502432 156502632	156502452 156502652	156502472 156502672	156502492 156502692	156502512 156502732	156502532 156502792	156502552 156502832	156502572 156502872	156502592 156502932
11	Shaft A316 PN25	165050112B 165050312B 165050670B	165050132B 165050332B	165050152B 165050352B	165050172B 165050372B	165050192B 165050392B	165050212B 165050432B	165050232B 165050492B	165050252B 165050532B	165050272B 165050572B	165050292B 165050632B
31	Tie rods SVN kit D12	KL22AVT KL22AU2 KL22AWE	KL22AVU KL22AV7	KL22AUT KL22AV1	KL22AVV KL22AV8	KL22AVW KL22AU6	KL22AVX KL22AV9	KL22AUY KL22AV4	KL22AVY KL22AWB	KL22AVZ KL22AWC	KL22AV0 KL22AVP

Motor, Coupling, Motor adaptor

Motor power kW >	0,37	0,55	0,55	0,75	1,1	1,1	1,1	1,5	1,5	1,5
	2,2	2,2	2,2	2,2	2,2	3,0	3,0	4,0	4,0	4,0
	5,5									

**1	kW >	0,37	0,55	0,75	1,1	1,5	2,2	3,0	4,0	5,5
	Motor 2P, 1 ~>	107230020	107230040	107230100	107230120	107230180	50004HD00			
	Motor 2P, 3 -IE2 since 0,75kW >	107230060	107230080	107230150	107230170	50000RD00	50001RD00	50002RF00	50008VG00	50013VE00
		107230060	107230080	107230150	107230500	107240000	107240500	107241000	50008VG00	50013VE00
	Motor 2P, 3 -IE3 since 0,75kW >	107230060	107230080	107234000	107234010	107234020	50A01RD00	50A02RD00	50A08VL00	50A13VE00
2	Adaptor	161471050	161471050	161471060	161471060	161471070	161471070	161471080	161471080	161471080
23	Lifting bracket	-	-	-	-	-	-	-	-	161441050
26	Coupling	KL10ABC	KL10ABC	KL10ABD	KL10ABD	KL10ABE	KL10ABE	KL10ABF	KL10ABF	KL10ABY
27	Coupling guard	KL33AAM	KL33AAM	KL33AAN	KL33AAN	KL33AAP	KL33AAP	KL33AAQ	KL33AAQ	KL33AAQ
39	Air Vent MOT B14 - B5	KL38AAB	KL38AAB	KL38AAB	KL38AAB	KL38AAB	KL38AAB	KL38AAB	KL38AAB	KL38AAC

Wear Parts kit

up to model (->)	-> 5SV08	-> 5SV16	-> 5SV22	-> 5SV28	-> 5SV34
	1 bearing	2 bearing	3 bearing	4 bearing	5 bearing
*34 Wear parts	KL35AE2	KL35AE3	KL35AE4	KL35AE5	KL35AE6

Mech seal Kit : Seal + sleeve OR

*20A	Materials ->	Q1AEGG	KL01AEY	Mech seal std Balanced HT D12 + sleeve OR HT
		Q1AVGG	KL01AEZ	
		Q1Q1VGG	KL01AE0	

4	Plugs	EPDM HT	KL34AAX
5	Upper holder		-
*9	Impeller 5SV A304		150703622
13	Seal housing disc		150102932
14	Pump body		161303352 -> 1-5SVN PN25-40
15	Diffuser		152803122
17	First stage box		152802922
*21	OR	EPDM HT	KL02AB9
24	Motor flange		161050700 1-3-5SV 5,5 kW
30	Bush seal kit EPDM HT		KL41AA4
	Bush seal kit FPM		KL41AA5
36	Final diffuser HT		152803022
37	Lower (seal) chamber HT		161441552
38	Upper (seal) chamber HT		161441512
40	Kit spacers for shaft		KL07AAA

* Recommended spare parts - Parti di ricambio consigliate

* Pièces détachées conseillées - Empfohlene Ersatzteile

** Motor spare parts: see motor lists - Parti di ricambio motore: vedi liste motore

** Pièces détachées Moteur : voir listes moteur - Motor-Ersatzteile: gem. Motorlisten

10SV NB 2 Pole (10SVNB/D: motors IE3 fitted)

ELP 2P										
N Version	10SV01NB007	10SV02NB007	10SV03NB011	10SV04NB015	10SV05NB022	10SV06NB022	10SV07NB030	10SV08NB030	10SV09NB040	10SV10NB040
M->	1016L269W	1016L270W	1016L271W	1016L272W	1016L273W	1016L274W				
T(IE2) ->	1016L115W	1016L116W	1016L117W	1016L118W	1016L119W	1016L120W	1016L121W	1016L122W	1016L123W	1016L124W
	1016L115W	1016L116W	1016L117W	1016LA61W	1016LA62W	1016LA63W	1016LA64W	1016LA65W	1016L123W	1016L124W
T(IE3) ->	1016LD15W	1016LD16W	1016LD17W	1016LD18W	1016LD19W	1016LD20W	1016LD21W	1016LD22W	1016LD23W	1016LD24W
	10SV11NB040	10SV13NB055	10SV15NB055	10SV17NB075	10SV18NB075	10SV20NB075				
M->										
T(IE2) ->	1016L125W	1016L127W	1016L129W	1016LD31W	1016LD32W	1016LD34W				
T(IE3) ->	1016LD25W	1016LD27W	1016LD29W	1016LD31W	1016LD32W	1016LD34W				

Single Unit and Kit

10	Sleeve A316 PN 40	156503202	156503202	156503212	156503222	156503242	156503252	156503262	156503282	156503292	156503302
11	Shaft A316	165053022B	165053022B	165051092B	165053042B	165053062B	165051132B	165053082B	165053102B	165051172B	165053122B
		165053142B	165053162B	165051252B	165053222B	165051292B	165053262B				
31	Tie rods SVN Kit D14	L=301	L=301	KL22AWP	L=365	L=397	KL22AWT	L=461	L=493	KL22AWX	L=557
		L=589	L=653	KL22AW3	L=781	KL22AW6	L=877				

Motor, Coupling, Motor Adaptor

Motor power kW >	0,75	0,75	1,1	1,5	2,2	2,2	3,0	3,0	4,0	4,0
	4,0	5,5	5,5	7,5	7,5	7,5				

**1	kW ->	0,75	1,1	1,5	2,2	3,0	4,0	5,5	7,5
	Motor 2 P, 1~>	107230100	107230120	107230180	50004HD00				
	Motor 2P,3 ~IE2 since 0,75kW >	107230150	107230170	50000RD00	50001RD00	50002RF00	50008VG00	50013VE00	50017VB00
		107230150	107230500	107240000	107240500	107241000	50008VG00	50013VE00	50017VB00
	Motor 2P,3 ~IE3 since 0,75kW >	107234000	107234010	107234020	50A01RD00	50A02RF00	50A08VL00	50A13VE00	50A17VB00
2	Adaptor	161470800	161470800	161470820	161470820	161470840	161470840	161470860	161470860
23	Lifting bracket	-	-	-	-	-	-	161441050	161441050
26	Coupling	KL10ABG	KL10ABG	KL10ABH	KL10ABH	KL10ABK	KL10ABK	KL10ABZ	KL10ABZ
27	Coupling guard	KL33AAR	KL33AAR	KL33AAS	KL33AAS	KL33AAT	KL33AAT	KL33AAU	KL33AAU
39	Air Vent MOT B14 - B5	KL38AAB	KL38AAB	KL38AAB	KL38AAB	KL38AAB	KL38AAB	KL38AAD	KL38AAD

Wear Parts Kit

	->10SV09	->10SV16	->10SV20
up to model (->)	1 bearing	2 bearing	3 bearing
*34 Wear parts	KL35AE7	KL35AE8	KL35AE9

Mechanical seal Kit : Mech seal D16 + OR

*20A	Materials->	Q1AEGG	KL01AE1	Std -> Seal Q1AEGG - sleeve OR EPDM HT / Balanced : 10-15-22SV < / = 4 kW
		Q1AVGG	KL01AE2	
		Q1Q1VGG	KL01AE3	
*20	Materials->	Q1AEGG	KL01AE5	Std -> Seal Q1AEGG - upper holder OR EPDM HT / Balanced : 10-15-22SV = / > 5,5 kW
		Q1AVGG	KL01AE6	
		Q1Q1VGG	KL01AD4	

Common, Single Unit and Kit

3	Base	161431330	-> 10SV
4	Plugs	EPDM HT	KL34AAX
5	Upper holder	-	Up to 4,0 kW included
		160103722	Equal / Over 5,5 kW
		160103742	Part with hole for tap
*9	Impeller10 SV A304	150703632	
13	Seal housing disc	150102942	Up to 4,0 kW included
		150102962	Equal / Over 5,5 kW
14	Pump body	161303372	10SVN PN25-40
15	Diffuser	152803132	
17	First stage box	152802932	
*21	OR	EPDM HT	KL02ACA
24	Motor flange	-	
30	Bush seal kit EPDM HT	KL41AA6	
	Bush seal kit FPM	KL41AA7	
36	Final diffuser	152803032	
37	Lower (seal) chamber HT	161441752	
38	Upper (seal) chamber HT	161441702	
40	Kit spacers for shaft	KL07AAB	

* Recommended spare parts - Parti di ricambio consigliate

* Pièces détachées conseillées - Empfohlene Ersatzteile

** Motor spare parts: see motor lists - Parti di ricambio motore: vedi liste motore

** Pièces détachées Moteur : voir listes moteur - Motor-Ersatzteile: gem. Motorlisten

15SV NB 2 Pole (15SVNB/D: motors IE3 fitted)

ELP 2P		15SV01NB01	15SV02NB02	15SV03NB03	15SV04NB04	15SV05NB04	15SV06NB05	15SV07NB05	15SV08NB07	15SV09NB07	15SV10NB11
N Version	M->	1016L278W	1016L279W								
T(IE2) ->		1016L140W	1016L141W	1016L142W	1016L143W	1016L144W	1016L145W	1016L146W	1016LD47W	1016LD48W	1016LD49W
		1016L140W	1016LA70W	1016LA71W	1016L143W	1016L144W	1016L145W	1016L146W	1016L147W	1016L148W	1016L149W
T(IE3) ->		1016LD40W	1016LD41W	1016LD42W	1016LD43W	1016LD44W	1016LD45W	1016LD46W	1016LD47W	1016LD48W	1016LD49W
		15SV11NB11	15SV13NB11	15SV15NB15							
M->											
T(IE2) ->		1016L150W	1016L152W	1016L154W							
		1016LD50W	1016LD52W	1016LD54W							
T(IE3) ->											

Single Unit and Kit

10 Sleeve A316 PN 40	156503212	156503212	156503232	156503252	156503272	156503292	156503312	156503332	156503352	156503372
11 Shaft A316	165051092B	165051092B	16505112B	165051132B	165051152B	165051172B	165051192B	165051212B	165051232B	165051252B
	165051272B	165051312B	165053292B							
31 Tie rods SVN Kit D14	KL22AWP	KL22AWP	KL22AWR	KL22AWT	KL22AVV	KL22AWX	KL22AWY	KL22AWZ	KL22AW1	KL22AW3
	KL22AW5	KL22AXA	L=957							

Motor, Coupling, Motor Adaptor

Motor power kW >	1,1	2,2	3,0	4,0	4,0	5,5	5,5	7,5	7,5	11,0
	11,0	11,0	15,0							

**1 kW ->	1,1	2,2	3,0	4,0	5,5	7,5	11,0	15,0
Motor 2 P, 1~ >	107230120	50004HD00						
Motor 2P,3 -IE2 since 0,75kW >	107230170	50001RD00	50002RF00	50008VG00	50013VE00	50017VB00	50019VE00	50024VB00
	107230500	107240500	107241000	50008VG00	50013VE00	50017VB00	50019VE00	50024VB00
Motor 2P,3 -IE3 since 0,75kW >	107234010	50A01RD00	50A02RF00	50A08VL00	50A13VE00	50A17VB00	50A19VE00	50A24VB00
2 Adaptor	161470800	161470820	161470840	161470840	161470860	161470860	161470880	161470880
23 Lifting bracket	-	-	-	-	161441050	161441050	161441060	161441060
26 Coupling	KL10ABG	KL10ABH	KL10ABK	KL10ABK	KL10ABZ	KL10ABZ	KL10ABO	KL10ABO
27 Coupling guard	KL33AAR	KL33AAS	KL33AAT	KL33AAT	KL33AAU	KL33AAU	KL33AAU	KL33AAU
39 Air Vent MOT B14 - B5	KL38AAB	KL38AAB	KL38AAB	KL38AAB	KL38AAD	KL38AAD	KL38AAD	KL38AAD

Wear Parts Kit

up to model (- >)	->15SV06	->15SV11	->15SV15
	1 bearing	2 bearing	3 bearing
*34 Wear parts	KL35AFA	KL35AFB	KL35AFC

Mech D16 + sleeve OR / Balanced 10-15-22SV < / = 4 kW

*20 Materials->	Q1AEGG	KL01AE1
	Q1AVGG	KL01AE2
	Q1Q1VGG	KL01AE3

Mech D16 + upper holder / Balanced : 10-15-22SV = / > 5,5 kW

*20 Materials->	Q1AEGG	KL01AE5
	Q1AVGG	KL01AE6
	Q1Q1VGG	KL01AD4

Common, Single Unit and Kit

4 Plugs	EPDM HT	KL34AAX	
5 Upper holder		-	Up to 4,0 kW included
		160103722	Over 5,5 kW
		160103742	Part with hole for tap
*9 Impeller 15SV A316		150703642	
13 Seal housing disc		150102942	Up to 4,0 kW included
		150102962	Over 5,5 kW
14 Pump body		161303382	-> 15-22SVN PN25-40
15 Diffuser		152803152	
17 First stage box		152802952	
*21 OR	EPDM HT	KL02ACA	
24 Motor flange		-	
30 Bush seal kit EPDM HT		KL41AA6	
		KL41AA7	
36 Final diffuser		152803052	
37 Lower (seal) chamber HT		161441752	
38 Upper (seal) chamber HT		161441702	
40 Kit spacers for shaft		KL07AAB	

* Recommended spare parts - Parti di ricambio consigliate

* Pièces détachées conseillées - Empfohlene Ersatzteile

** Motor spare parts: see motor lists - Parti di ricambio motore: vedi liste motore

** Pièces détachées Moteur : voir listes moteur - Motor-Ersatzteile: gem. Motorlisten

22SV NB 2 Pole (22SVNB/D: motors IE3 fitted)

ELP 2P											
N Version	22SV01NB01	22SV02NB02	22SV03NB03	22SV04NB04	22SV05NB05	22SV06NB06	22SV07NB07	22SV08NB11	22SV09NB11	22SV10NB11	
	M->	1016L283W	1016L284W								
	T(IE2) ->	1016L161W	1016L162W	1016L163W	1016L164W	1016L165W	1016LD66W	1016LD67W	1016LD68W	1016LD69W	1016LD70W
		1016L161W	1016LA76W	1016LA77W	1016L164W	1016L165W	1016L166W	1016L167W	1016L168W	1016L169W	1016L170W
	T(IE3) ->	1016LD61W	1016LD62W	1016LD63W	1016LD64W	1016LD65W	1016LD66W	1016LD67W	1016LD68W	1016LD69W	1016LD70W
		22SV12NB15	22SV14NB15								
	M->										
	T(IE2) ->	1016L172W	1016L174W								
	T(IE3) ->	1016LD72W	1016LD74W								

Single Unit and Kit

10	Sleeve A316 PN 40	156503212 156503412	156503212 156503452	156503232	156503252	156503272	156503292	156503312	156503332	156503352	156503372
11	Shaft A316	165051092B 165051292B	165051092B 165051332B	165051112B	165051132B	165051152B	165051172B	165051192B	165051212B	165051232B	165051252B
31	Tie rods SVN K D14	KL22AWP KL22AW6	KL22AWP KL22AW7	KL22AWR	KL22AWT	KL22AWV	KL22AWX	KL22AWY	KL22AWZ	KL22AW1	KL22AW3

Motor, Coupling, Motor Adaptor

Motor power kW >	1,1	2,2	3,0	4,0	5,5	7,5	7,5	11,0	11,0	11,0
	15,0	15,0								

**1	kW ->	1,1	2,2	3,0	4,0	5,5	7,5	11,0	15,0
	Motor 2 P, 1~>	107230120	50004HD00						
	Motor 2P,3 -IE2 since 0,75kW	107230170	50001RD00	50002RF00	50008VG00	50013VE00	50017VB00	50019VE00	50024VB00
		107230500	107240500	107241000	50008VG00	50013VE00	50017VB00	50019VE00	50024VB00
	Motor 2P,3 -IE3 since 0,75kW	107234010	50A01RD00	50A02RF00	50A08VL00	50A13VE00	50A17VB00	50A19VE00	50A24VB00
2	Adaptor	161470800	161470820	161470840	161470840	161470860	161470860	161470880	161470880
23	Lifting bracket	-	-	-	-	161441050	161441050	161441060	161441060
26	Coupling	KL10ABG	KL10ABH	KL10ABK	KL10ABK	KL10ABZ	KL10ABZ	KL10AB0	KL10AB0
27	Coupling guard	KL33AAR	KL33AAS	KL33AAT	KL33AAT	KL33AAU	KL33AAU	KL33AAU	KL33AAU
39	Air Vent MOT B14 - B5	KL38AAB	KL38AAB	KL38AAB	KL38AAB	KL38AAD	KL38AAD	KL38AAD	KL38AAD

Wear Parts Kit	->22SV06	->22SV11	->22SV14
up to model (->)	1 bearing	2 bearing	3 bearing
*34 Wear parts	KL35AFA	KL35AFB	KL35AFC

Mech D16 + sleeve OR / Balanced 10-15-22SV < / = 4 kW

*20A	Materials->	Q1AEGG	KL01AE1
		Q1AVGG	KL01AE2
		Q1Q1VGG	KL01AE3

Mech D16 + upper holder / Balanced : 10-15-22SV = / > 5,5 kW

*20	Materials->	Q1AEGG	KL01AE5
		Q1AVGG	KL01AE6
		Q1Q1VGG	KL01AD4

Common, Single Unit and Kit

4	Plugs	EPDM HT	KL34AAX
5	Upper holder	-	Up to 4,0 kW included
		160103722	Equal / Over 5,5 kW
		160103742	Part with hole for tap
*9	Impeller 22SV A316	150703652	
13	Seal housing disc	150102942	Up to 4,0 kW included
		150102962	Equal / Over 5,5 kW
14	Pump body	161303382	-> 15-22SVN PN25-40
15	Diffuser	152803152	
17	First stage box	152802952	
*21	OR	EPDM HT	KL02ACA
24	Motor flange	-	
30	Bush seal kit EPDM HT	KL41AA6	
		KL41AA7	
36	Final diffuser	152803052	
37	Lower (seal) chamber HT	161441752	
38	Upper (seal) chamber HT	161441702	
40	Kit spacers for shaft	KL07AAB	

* Recommended spare parts - Parti di ricambio consigliate

* Pièces détachées conseillées - Empfohlene Ersatzteile

** Motor spare parts: see motor lists - Parti di ricambio motore: vedi liste motore

** Pièces détachées Moteur : voir listes moteur - Motor-Ersatzteile: gem. Motorlisten