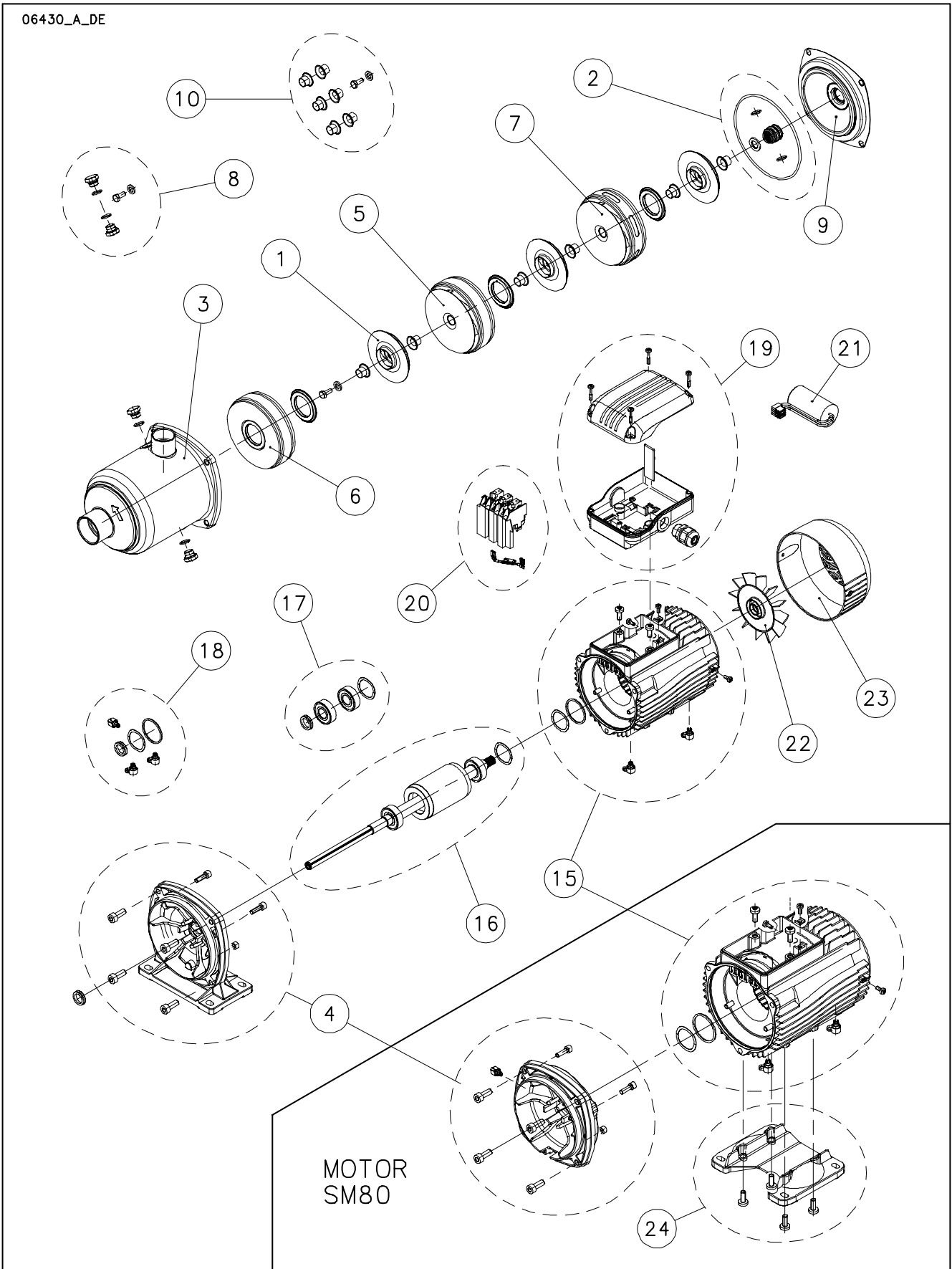


1, 3, 5 HM..S-N "COMPACT DESIGN"

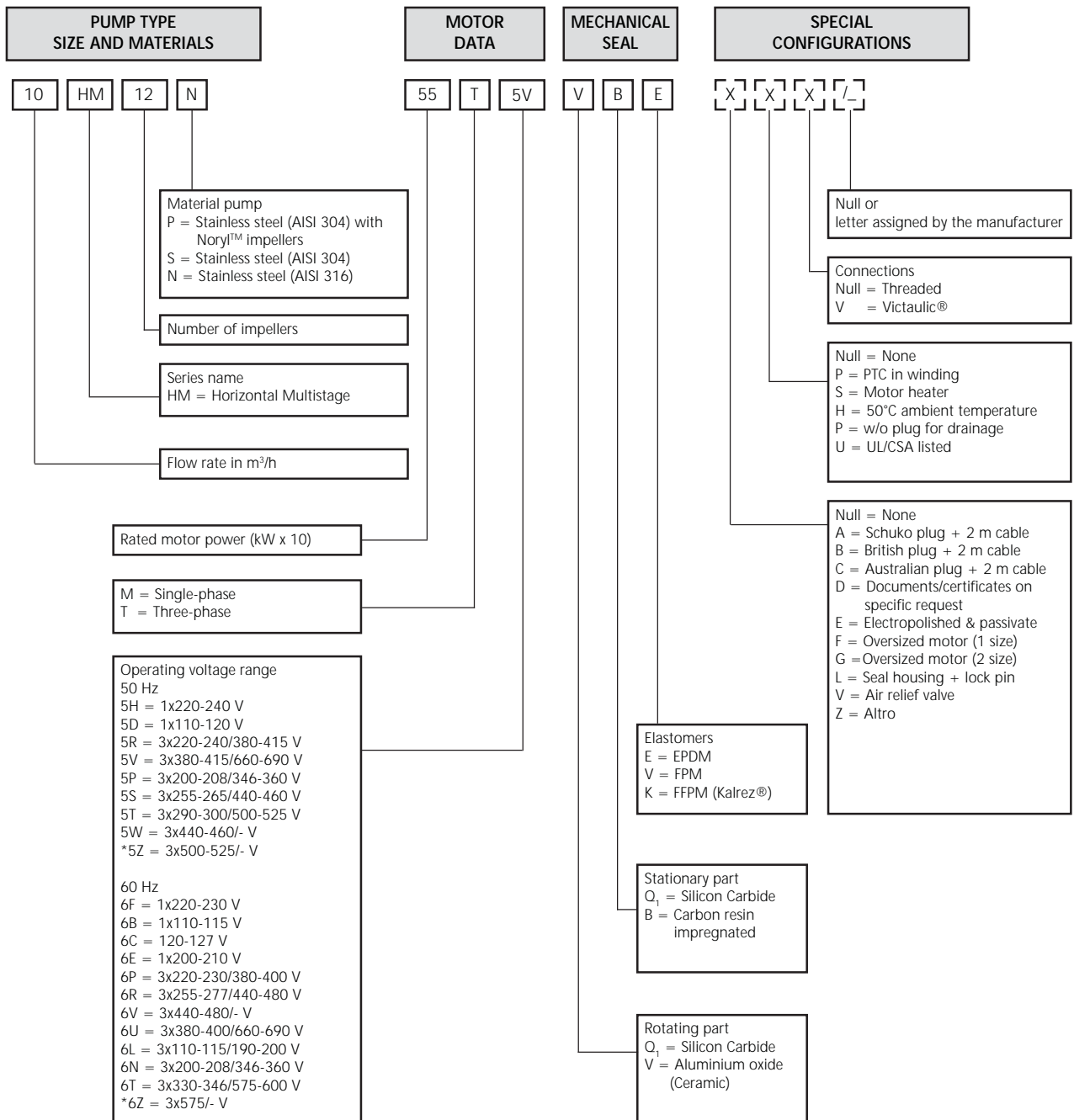


Lowara and Vogel Pumpen are a trademark of Xylem Inc. or one of its subsidiaries. Goulds is a registered trademark of Goulds Pumps, Inc. and is used under license.

N.	Descrizione it	Description en	Description fr	Beschreibung de	Descripción es	Descrição pt
1	Girante	Impeller	Roue	Laufrad	Rodete	Impulsor
2	Kit tenuta mecc. + OR	Mechanical seal + OR kit	Kit garniture méc. + joints toriques	Gleitringsdichtung + OR	Kit sello mec. + junta tórica	Kit Empaque mecanico + O-Ring
3	Corpo pompa	Pump body	Corps de pompe	Pumpengehäuse	Caja bomba	Voluta bomba
4	Lanterna + viti	Adaptor + Screws	Lanterne + Visserie	Passfeder + Schrauben	Adaptador + Tornillos	Adaptador + parafusos
5	Diffusore	Diffuser	Diffuseur	Diffusor	Difusor	Difusor
6	Stadio iniziale	Initial stage	Premier étage	Erste Stufe Diffusor	Etapa inicial	Primeira célula
7	Diffusore finale	Last stage diffuser	Diffuseur dernier étage	End Diffusor	Difusor final	Difusor final
8	Tappi + OR / Vite girante	Plug + ORing / Impeller screw	Bouchon + joint torique / Roue Vie	Stecker + OR / Laufrad Schraube	Tapón + junta tórica / Tornillo de rodete	Bujão + OR / Parafuso do impulsor
9	Disco portatenuta	Seal housing disc	Disque d'étanchéité	Dichtungsscheibe	Disco de alojamiento retén	Disco porta-vedante
10	Kit distanziali girante + Vite girante	Impeller spacers kit + Impeller screw	Kit entretoises de roue + Roue Vie	Laufrad DistanzscheibenSatz + Schraube	Kit espaciadores + Tornillo de rodete	Kit espaciadores + Parafuso do impulsor
15	Cassa statore	Stator housing	Carcasse stator	Statorgehäuse	Carcasa estator	Carcaça estator
16	Albero rotore completo	Shaft rotor complete	Arbre rotor au complet	Rotorwelle Komplete	Eje rotor complete	Vejo rotor completo
17	Cuscinetti - Anelli	Bearings - Rings	Roulements - Anneaux	Lagers - Rings	Cojinetes - Anillos	Rolamentos - Anels
18	Anelli tenuta - Tappi	Oil seals - Plugs	Bagues étanchéité-Bouchons	Abdichtungsringen-Schrauben	Anillos estanqueidad- Tapones	Retentores - Bujões
19	Scatola morsettiera	Terminal box	Boite a bornier	Klemmenkasten	Caja de bornes	Caixa de terminais
20	Morsettiera / Plug in	Terminal block / Plug in	Bornier enfichable / Plug in	Steck-Klemmkasten / Plug in	Place de bornes / Plug in	Terminais / Plug in
21	Condensatore	Capacitor	Condensateur	Kondensator	Condensador	Condensador
22	Ventola	Fan	Ventilateur	Lüfterrad	Ventilador	Ventilador
23	Copriventola	Fan cover	Couvercle de ventilateur	Lüfterradhaube	Tapa ventilador	Cobertura do ventilador
24	Piede motore	Motor foot	Pied de moteur	Motorfuß	Pie del motor	Pé do motor
N.	Beschrijving nl	Περιγραφή el	Açıklama tr	Kuvaus fi	Описание ru	Opis pl
1	Waaier	Φτερωτές στροφέιο	Pompa rotorun	Juoksupyörän	импеллер	Wirnik
2	Kit mech. afdichting + O-ring	Μηχανική σφραγίδα στεγανότητας Σετ + OR	Mekanik salmastra kiti + O-Ring	Mek. akseliiviste + O-rengassarja	Комплект мех. печать + OR	Zestaw uszczelniający mech. + OR
3	Pomphuis	Αντλία πλαίσια επένδυση	Pompa gövdesi	Pumpu kotelo	Корпус насоса	Korpus pompy
4	Lantaarnstuk met schroeven	προσαρμογέα + βιδιών	Adaptör + Vida	Adaptér + Ruuvi	адаптер + винтов	Piasta + łączników gwintowych
5	Diffusor	διαχυτήρας	Difüzör	Diffuusioyksikön	Диффузор	Dyfuzor
6	Eerste trap	Πρώτο στάδιο	ilk kademe	Ensivaihe	начальной стадии	Dyfuzor Początkowa
7	Diffusor laatste trap	Τελικός διαχυτήρας	Son difüzör	Loppuvaiheen diffusori	Концевой диффузор	Dyfuzor końcowy
8	Pluggen + OR /Waaier schroef	Πώμα + OR / βιδών στροφέιο	Fişi + O-Ring / Rotorunu vida	Tulppa + Oring / Juoksupyörän ihmishenkiä	штпсель + OR / импеллер винтов	Zatyczka + OR / Śrubowy wirnika
9	Dichtingssteunplaat	Δίσκος μηχανικού στυπιοθλίπτη	Sızdırmazlık diskisi	Tiivisteen kannatuslevy	Диск держателя прокладки	Tarcza uszczelki
10	Waaier spacer set + Waaier schroef	Αποστάτες πτερωτής που + βιδών στροφέιο	Pompa rotor ayuncilar seti + Rotorunu vida	Juoksupyöräna välilevyt + ihmishenkiä	Комплект импеллер: распорки + винтов	Wirnik przekładki kit + Śrubowy wirnika
15	Statorhuis	Έδρα κατοίκι	Stator karteri	Staattori kaapit	Корпус статора	Stator Nadawcza
16	Rotor as compleet	επάνω και το κάτω μέρος του	Rotor mili	Roottori akseli	ось ротора	Walek kompletny (z rotorem)
17	Lagers - Ringen	Τριβεία- δακτύλιοι	Rulmanlar - Ringes	Laakeri - Rengas	Подшипник - кольцами	łożyska - pierścienie
18	Zegel ringen - Vulpluggen	πετρέλαιου παρεμβύσματα - πώμα	Fok ringes - Burg/mafsäl	Ölly tiivisteet - Tulppa	прокладки для нефти - штпсели	Uszczelka olejowa - zatyczki
19	Kabelkast	Πίνακες θερματικών	Terminal Kutu	Liitinkotelon kansi	соединители коробка	Skrzynka zaciskowa
20	Klemmenbord / Plug in	Τερματικές μονάδες / Plug in	Kaide bacaklar / Plug in	Liitinalusta / Plug in	контактная колодка / Plug in	Podstawa ze sworzzeniami Plug in
21	Condensator	πυκνωτ	Kondansatör	Kondensaattori	конденсатор	Kondensator
22	Ventilator	Ανεμιστήρ	Vantilatör	Tuuletin	вентилятор	Wentylator
23	Ventilatorkap	Ανεμιστήρ Ελάσματα κάλυψης	Vantilatör kapağı	Tuulettimen kanne	вентилятор крышка	Oslona wentylatora
24	Motor voet	Πόδι κινητήρα	Makina ayak	Moottori jalka	Корпус статора + двигатель стопы	Silnik noga mebla



e-HM™ SERIES IDENTIFICATION CODE



EXAMPLE: 10HM12N55T5VQBE
HM series electric pump, flow rate 10 m³/h, number of impellers 12, N version (AISI 316), rated motor power 5,5 kW, three-phase 50 Hz, voltage 380-415/660-690 V, Silicon/Carbide/EPDM mechanical seal.

* For uses other than EN 60335-2-41.
For special configurations please contact the sales network.



1HM..N Compact Design

upto 6 stg

ELP 2 P					
ELP 1-, 220-240V 50Hz ->	1HM02N03M	1HM03N03M	1HM04N03M	1HM05N03M	1HM06N05M
	-	-	-	-	104605254
ELP 3-, 230-400V 50Hz ->	1HM02N03T	1HM03N03T	1HM04N03T	1HM05N03T	1HM06N03T
	104604014	104604024	104604034	104604044	104604054
Stages number ->	2	3	4	5	6
kW ->	-	-	-	-	0.50
	0.30	0.30	0.30	0.30	0.30

Pump**Kit**

*2	Mech seal D14 +OR ->	VBE	KL01AE9	Std -> Seal VBE - OR EPDM
		QBE	KL01AFA	
		QQE	KL01AFB	
		VBV	KL01AFC	
		QBV	KL01AFD	
		QQV	KL01AFE	
		QBK	KL01AFU	
		QQK	KL01AFV	
	OR EPDM	KL02ACD	1-5HM Compact Design	
	OR FPM	KL02ACG		
	OR FFKM	KL02ACL		
8	Plugs S.S. EPDM + imp. screw	KL34AAZ		
	Plugs S.S. FPM + imp. screw	KL34AA2		
	Plugs S.S. FFKM + imp. screw	KL34AA5		

Single Unit

*1	Impeller A316 1HMN	150703602	150703602	150703602	150703602	150703602
3	Pump body	151302722	151302722	151302732	151302742	151302752
5	Diffuser	152803112	152803112	152803112	152803112	152803112
		1	1	2	3	4
6	First stage diffuser	152802912				
7	Last stage diffuser w/slots	152803482				
9	Seal housing disc with wing	150104122				
10	Impeller spacers (nr. 6/kit)	KL07AAM	KL07AAM	KL07AAM	KL07AAM	KL07AAM
		1			2	

Motor**Kit**

4	Adaptor w/screws	-	-	-	-	KL21AAM
		KL21AAM	KL21AAM	KL21AAM	KL21AAM	KL21AAM
15	Motor casing + Stator	-	-	-	-	KL25AA6
		KL25AA5	KL25AA5	KL25AA5	KL25AA5	KL25AA5
16	Shaft rotor complete pumpshaft	-	-	-	-	KL09ADY
		KL09ADS	KL09ADS	KL09AD1	KL09ADU	KL09ADV
17*	Bearings - Rings	-	-	-	-	KL11AAA
	Bearings Type	6202/6202				
	Bearings - Rings	KL11AAA	KL11AAA	KL11AAA	KL11AAA	KL11AAA
	Bearings Type	6202/6202				
18*	Oil seals - Plugs	KL03ABP	KL03ABP	KL03ABP	KL03ABP	KL03ABP
19	Terminal box	-	-	-	-	KL30AAA
		KL30AAA	KL30AAA	KL30AAA	KL30AAA	KL30AAA
23	Fan cover w/screws	KL29AAC	KL29AAC	KL29AAC	KL29AAC	KL29AAC
		KL29AAC	KL29AAC	KL29AAC	KL29AAC	KL29AAC
24	Motor Foot	-	-	-	-	-
		-	-	-	-	-

Single Unit

20	T-block 1 ~ (Plug in /MP)	-	-	-	-	158160640
		158160280	158160280	158160280	158160280	158160280
21	Capacitor 1 ~ uF ->	-	-	-	-	150990430
		-	-	-	-	16
22	Fan SM63 - 80	-	-	-	-	140760150
		140760150	140760150	140760150	140760150	140760150

* Recommended spare parts - Parti di ricambio consigliate

* Pièces détachées conseillées - Empfohlene Ersatzteile

3HM..N Compact Design

upto 6 stg

ELP 2 P					
ELP 1~, 220-240V 50Hz ->	3HM02N03M	3HM03N05M	3HM04N05M	3HM05N05M	3HM06N05M
	-	104605514	104605524	104605534	104605544
ELP 3~, 230-400V 50Hz ->	3HM02N03T	3HM03N03T	3HM04N03T	3HM05N04T	3HM06N05T
	104604304	104604314	104604324	104604334	104604344
Stages number ->	2	3	4	5	6
kW ->	-	0.50	0.50	0.50	0.50
	0.30	0.30	0.30	0.40	

Pump

Kit

*2	Mech seal D14 +OR ->	VBE	KL01AE9	Std -> Seal VBE - OR EPDM
		QBE	KL01AFA	
		QQE	KL01AFB	
		VBV	KL01AFC	
		QBV	KL01AFD	
		QQV	KL01AFE	
		QBK	KL01AFU	
		QQK	KL01AFV	
	OR EPDM	KL02ACD	1-5HM Compact Design	
	OR FPM	KL02ACG		
	OR FFKM	KL02ACL		
8	Plugs S.S. EPDM + imp. screw	KL34AAZ		
	Plugs S.S. FPM + imp. screw	KL34AA2		
	Plugs S.S. FFKM + imp. screw	KL34AA5		

Single Unit

*1	Impeller A316 3HMN	150703612	150703612	150703612	150703612	150703612
3	Pump body	151302722	151302722	151302732	151302742	151302752
5	Diffuser	152803112	152803112	152803112	152803112	152803112
		1	1	2	3	4
6	First stage diffuser	152802912				
7	Last stage diffuser w/slots	152803482				
9	Seal housing disc with wing	150104122				
10	Impeller spacers (nr. 6/kit)	KL07AAM	KL07AAM	KL07AAM	KL07AAM	KL07AAM
		kit ->	1		2	

Motor

Kit

4	Adaptor w/screws	-	KL21AAM	KL21AAM	KL21AAM	KL21AAM
		KL21AAM	KL21AAM	KL21AAM	KL21AAM	KL21AAM
15	Motor casing + Stator	-	KL25AA6	KL25AA6	KL25AA6	KL25AA6
		KL25AA5	KL25AA5	KL25AA5	KL25AAB	KL25AAB
16	Shaft rotor complete pumpshaft	-	KL09ADZ	KL09AD0	KL09AD1	KL09ADY
		KL09ADS	KL09ADS	KL09ADT	KL09ADU	KL09ADY
17*	Bearings - Rings	-	KL11AAA	KL11AAA	KL11AAA	KL11AAB
		6202/6202				
		KL11AAA	KL11AAA	KL11AAA	KL11AAA	KL11AAA
18*	Bearings Type	6202/6202				
		KL03ABP	KL03ABP	KL03ABP	KL03ABP	KL03ABP
19	Oil seals - Plugs	-	KL30AAA	KL30AAA	KL30AAA	KL30AAA
		KL30AAA	KL30AAA	KL30AAA	KL30AAA	KL30AAA
23	Terminal box	-	KL29AAC	KL29AAC	KL29AAC	KL29AAC
		KL29AAC	KL29AAC	KL29AAC	KL29AAC	KL29AAC
24	Fan cover w/screws	-	KL29AAC	KL29AAC	KL29AAC	KL29AAC
		KL29AAC	KL29AAC	KL29AAC	KL29AAC	KL29AAC
24	Motor Foot	-	-	-	-	-
		-	-	-	-	-

Single Unit

20	T-block 1 ~ (Plug in /MP)	-	158160620	158160640	158160680	158160700
		158160280	158160280	158160280	158160280	158160280
21	T-block 3 ~ (Plug in)	-	150990430	150990430	150990440	150990450
		Capacitor 1 ~	uF ->	16	16	20
22	Fan SM63 - 80	-	140760150	140760150	140760150	140760150
		140760150	140760150	140760150	140760160	140760160

* Recommended spare parts - Parti di ricambio consigliate

* Pièces détachées conseillées - Empfohlene Ersatzteile

5HM..N Compact Design

upto 5 stg

ELP 2 P				
ELP 1-, 220-240V 50Hz ->	5HM02N05M	5HM03N05M	5HM04N05M	5HM05N07M
	104605754	104605764	104605774	104605784
ELP 3-, 230-400V 50Hz ->	5HM02N03T	5HM03N04T	5HM04N05T	5HM05N07T
	104604554	104604564	104604574	104604584
Stages number ->	2	3	4	5
kW ->	0.50	0.50	0.50	0.75
	0.30	0.40		

Pump**Kit**

*2	Mech seal D14 +OR ->	VBE	KL01AE9	Std -> Seal VBE - OR EPDM
		QBE	KL01AFA	
		QQE	KL01AFB	
		VBV	KL01AFC	
		QBV	KL01AFD	
		QQV	KL01AFE	
		QBK	KL01AFU	
		QQK	KL01AFV	
OR EPDM		KL02ACD		
	OR FPM	KL02ACG		
	OR FFKM	KL02ACL		
8	Plugs S.S. EPDM + imp. screw	KL34AAZ		
	Plugs S.S. FPM + imp. screw	KL34AA2		
	Plugs S.S. FFKM + imp. screw	KL34AA5		

Single Unit

*1	Impeller A316 5HMN	150703622	150703622	150703622	150703622
3	Pump body	151302902	151302902	151302832	151302922
5	Diffuser	152803122	152803122	152803122	152803122
		Stg n. less 1		Stg n. less 2	
6	First stage diffuser	152802922			
7	Last stage diffuser w/slots	152803492			
9	Seal housing disc with wing	152803482			
10	Impeller spacers (nr. 6/kit)	KL07AAN	KL07AAN	KL07AAN	KL07AAN
		kit ->	1		2

Motor**Kit**

4	Adaptor w/screws	KL21AAM	KL21AAM	KL21AAM	KL21AAN	
		KL21AAM	KL21AAM	KL21AAM	KL21AAP	
15	Motor casing + Stator	KL25AA6	KL25AA6	KL25AA6	KL25AAE	
		KL25AA5	KL25AAB	KL25AA8	KL25ADD	
16	Shaft rotor complete pumpshaft	KL09AD6	KL09AD6	KL09AD7	KL09AD8	
		KL09AEC	KL09AED	KL09AD7	KL09AEE	
17*	Bearings - Rings	KL11AAA	KL11AAA	KL11AAA	KL11AAB	
		Bearings Type	6202/6202		6202/6302	
		Bearings - Rings	KL11AAA	KL11AAA	KL11AAA	KL11AAU
		Bearings Type	6202/6202		6204/6204HE	
18*	Oil seals - Plugs	KL03ABP	KL03ABP	KL03ABP	KL03ABP	
19	Terminal box	KL30AAA	KL30AAA	KL30AAA	KL30AAA	
		KL30AAA	KL30AAA	KL30AAA	KL30AAA	
23	Fan cover w/screws	KL29AAC	KL29AAC	KL29AAC	KL29AAD	
		KL29AAC	KL29AAC	KL29AAC	KL29AAE	
24	Motor Foot	-	-	-	-	
		-	-	-	KL23AAD	

Single Unit

20	T-block 1 ~ (Plug in /MP)	158160600	158160640	158160640	158160680
		T-block 3 ~ (Plug in)	158160280	158160280	158160280
21	Capacitor 1 ~	150990430	150990430	150990430	150990440
		uF ->	16	16	16
22	Fan SM63 - 80	140760150	140760150	140760150	140760150
		140760150	140760150	140760150	140760160

* Recommended spare parts - Parti di ricambio consigliate

* Pièces détachées conseillées - Empfohlene Ersatzteile