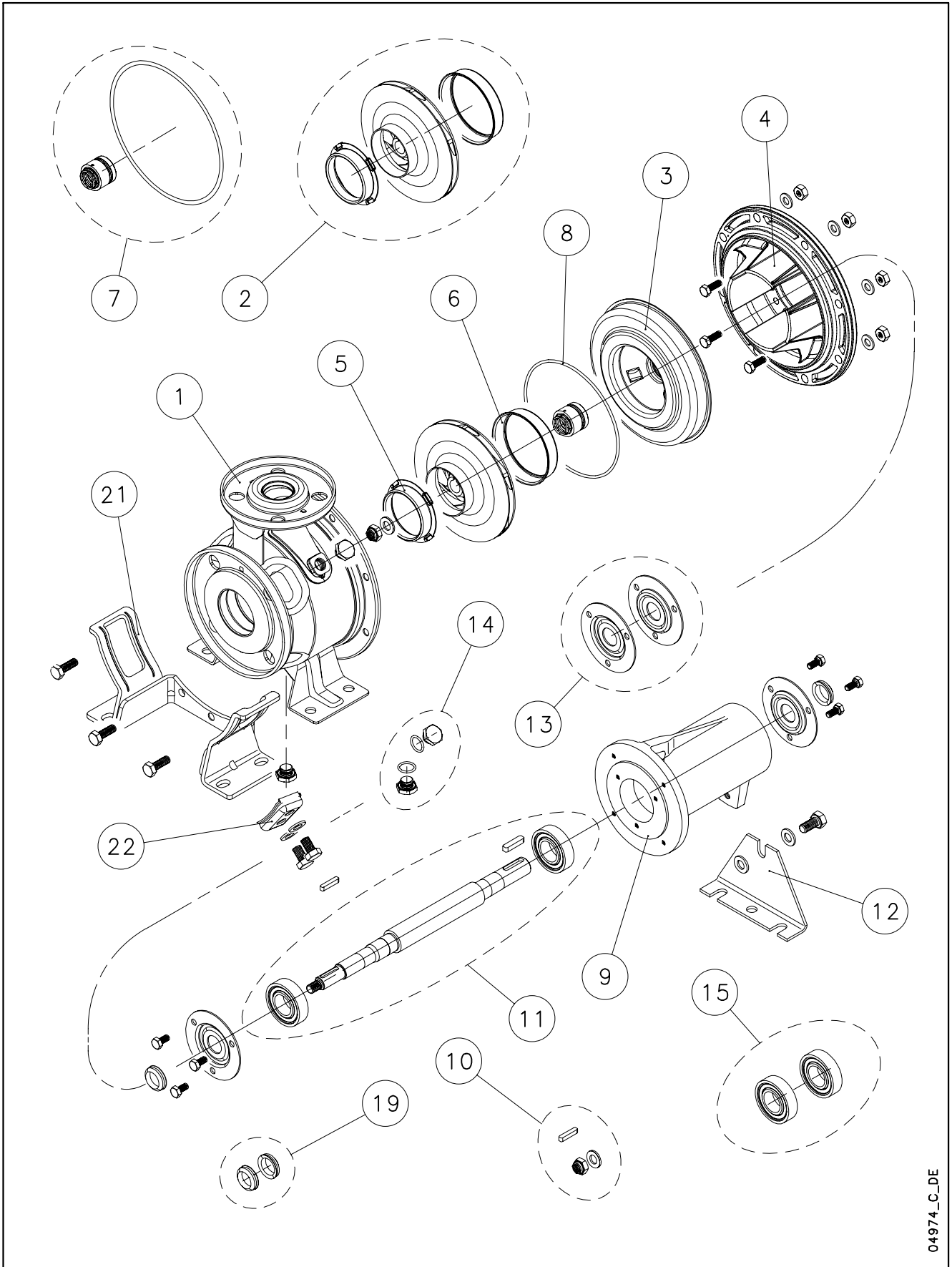


## SHF - SHF4 / GSHF - GSHF4 PMP



04974\_C\_DE

Lowara and Vogel Pumpen are a trademark of Xylem Inc. or one of its subsidiaries. Goulds is a registered trademark of Goulds Pumps, Inc. and is used under license.

N.	Descrizione it	Description en	Description fr	Beschreibung de	Descripción es	Descrição pt
1	Corpo pompa completo	Complete pump body	Corps de pompe complet	Kompletter pumpengehäuse	Caja bomba completa	Corpo da bomba completo
2	Girante e anelli di usura	Impeller and wear rings	Roue et anneaux d'usure	Laufrad und Verschleißbringe	Rodete y anillos de desgaste	Impulsor e anéis compensadores de desgaste
3	Disco portatenuta (con anello di usura)	Seal housing (with wear ring)	Disque d'étanchéité (avec anneau d'usure)	Dichtungsscheibe (mit Ausgleichsring)	Disco de alojamiento retén (con anillo de desgaste)	Disco porta-vedante (com anel compensador de desgaste)
4	Lanterna	Adaptor	Lanterne	Antriebslaterne	Adaptador	Adaptador
5	Rasamento anteriore	Front wear plate	Bague pour régulation du jeu axial avant	Vordere Ausgleichsscheibe	Espesor delantero	Casquillo anterior
6	Rasamento posteriore	Back wear plate	Bague pour régulation du jeu axial arrière	Hintere Ausgleichsscheibe	Espesor trasero	Casquillo posterior
7	Tenuta meccanica e guarnizione OR	Mechanical seal and O-Ring	Garniture mécanique et joint torique	Gleitringdichtung und O-Ring	Retén mecánico y aro tórico	Vedante mecânico e vedação OR
8	Guarnizione OR	O-Ring	Joint torique	O-Ring	Aro tórico	Vedação OR
9	Corpo supporto	Support body	Corps support	Lagerungsgehäuse	Caja soporte	Corpo suporte
10	Gruppo fissaggio girante (dado, rosetta e linguetta)	Impeller locking group (nut, washer and key)	Groupe de fixation roue (ecrou, rondelle et clavette)	Befestigungsgruppe Laufrad (Feststellmutter, Unterlegscheibe und Passfeder)	Grupo de fijación rodete (tuerca, arandela y lengüeta)	Grupo de fixação do impulsor (porca, anilha e lingueta)
11	Albero con cuscinetti	Shaft with bearings	Arbre avec roulements	Welle mit Lagern	Eje con cojinetes	Veio com rolamentos
12	Sostegno supporto	Support holder	Pied de support	Lagerungshalterung	Apoyo del soporte	Sustento suporte
13	Coperchietti	Covers	Petits couvercles	Deckel	Tapas	Tampas
14	Kit tappi	Plug kit	Kit bouchons	Verschlussrauben-Kit	Kit tapones	Kit tampões
15	Cuscinetti	Bearings	Roulements	Lager	Cojinetes	Rolamentos
19	Anelli di tenuta	Seal rings	Bagues d'étanchéité	Dichtungsring	Sellos estancos	Anéis de vedação
21	Sostegno corpo pompa	Pump body support	Support corps de pompe	Pumpengehäusehalterung	Soporte caja bomba	Suporte corpo bomba
22	Coperchietto	Cover	Couvercle	Deckel	Tapa	Tampa
N.	Beschrijving nl	Περιγραφή el	Açıklama tr	Kuvaus fi	Описание ru	Opis pl
1	Compleet pomphuis	Πλήρες σώμα αντλίας	Komple pompa gövdesi	Täydellinen pumpun runko	Полный корпус насоса	Kompletny korpus pompy
2	Waaier en slijtringen	Πτερόγιο και δακτύλιοι τριβής	Pompa rotoru ve aşınma halkaları	Juoksuyöä ja kulumisrenkaat	Рабочее колесо и изнашиваемые кольца	Wirnik i pierścienie wymienne
3	Dichtingssteunplaat (met slijtring)	Δίσκος μηχανικού στυπιοθλίπτης και δακτύλιος τριβής	Sızdırmazlık diskisi (aşınma halkası ile)	Tiivsteen kannatuslevy (kulumisrenkaalla)	Диск держателя прокладки (с изнашиваемым кольцом)	Tarcza uszczelki (z wymiennym pierścieniem)
4	Lantaarnstuk	Μπρακέτο	Adaptör	Sovitin	Адаптер	Lampa
5	Voorste schraapring	Πρόσθιος δακτύλιος τριβής	Ön ara halkası	Etväililevy	Передняя утолщающая прокладка	Wyglądanie przednie
6	Achterste schraapring	Οπίσθιος δακτύλιος τριβής	Arka ara halkası	Takaväililevy	Задняя утолщающая прокладка	Wyglądanie tylne
7	Mechanische asafdichting en O-ringafdichting	Μηχανικός στυπιοθλίπτης και ροδέλες στεγανοποίησης	Mekanik conta ve O-Ring	Mekaaninen tiiviste ja O-rengas	Механическая прокладка и уплотнение OR	Uszczelnienie mechaniczne i uszczelka O-Ring
8	O-ringafdichting	Ροδέλα στεγανοποίησης	O-Ring	O-rengas	Прокладка OR	Uszczelka O-Ring
9	Steunlichaam	Έδρανο	Destek gövdesi	Kannattimen runko	Корпус опоры	Korpus wspornika
10	Waaierbevestigingsblok (moer, ring en spie)	Σετ ασφάλισης πτερυγίου (παξιμάδι, ροδέλα, σφήνα)	Pompa rotorunu sabitleme takımı (somun, rondela ve kama)	Juoksuyöä kiinnityskokonaisuus (mutteri, välirengas ja kiila)	Узел фиксации рабочего колеса (гайка, шайба и шпонка)	Zespół mocujący wirnika (nakrętka, podkładka i wpust)
11	As met lagers	Σετ άξονα με ρουλεμαν	Rulmanlı mil	Akseli ja laakerit	Вал с подшипниками	Wał z łożyskami
12	Steun	Πέλμα εδράνου	Destek mesnedi	Kannattimen tuki	Держатель опоры	Podpora wspornika
13	Kapjes	Καλύμματα	Küçük kapaklar	Kannet	Κрышки	Pokrywki
14	Stoppenset	Σετ ταπών	Tapa kiti	Tulppasarja	Набор пробок	Zestaw zatyczek
15	Lagers	Σετ ρουλεμάν	Rulmanlar	Laakerit	Подшипники	łożyska
19	Dichtingsringen	Τσιμούχες άξονα	Sızdırmazlık halkaları	Tiivistysrenkaat	Уплотнительные кольца	Pierścienie uszczelniające
21	Steun pomplichaam	Πέλμα στήριξης	Pompa gövdesi mesnedi	Pumpun rungon tuki	Опора корпуса насоса	Podpora korpusu pompy
22	Kapje	Στήριγμα πέλματος	Küçük kapak	Kansi	Κрышка	Pokrywka

## SHF 25 Pump

Pump with impeller	<b>25-125/119</b>	<b>25-125/136</b>	<b>25-160/150</b>	<b>25-160/164</b>	<b>25-200/188</b>	<b>25-200/204</b>	<b>25-250/222</b>	<b>25-250/242</b>	<b>25-250/256</b>
	TBD	102209270	102209280	102209290	TBD	102209310	TBD	TBD	TBD
ELP 3~ 2P, kW ->	<b>0,75</b>	<b>1,1</b>	<b>1,5</b>	<b>2,2</b>	<b>3,0</b>	<b>4,0</b>	<b>5,5</b>	<b>7,5</b>	<b>11,0</b>
ELP 3~ 4P, kW ->	<b>0,25</b>	<b>0,25</b>	<b>0,25</b>	<b>0,37</b>	<b>0,37</b>	<b>0,55</b>	<b>0,75</b>	<b>1,1</b>	<b>1,5</b>

	Dia - Ø	119	136	150	164	188	204	222	242	256
2*	Impeller 2P	KL04AA9	KL04ABA	KL04ABB	KL04ABC	KL04ABD	KL04ABE	KL04ACK	KL04ACL	KL04ACM
	Impeller 4P	KL04AA9	KL04ABA	KL04ABB	KL04ABC	KL04ABD	KL04ABE	KL04ACK	KL04ACL	KL04ACM

7*	Mech seal kit	<b>Seal D:22</b>					<b>Seal D:22-OR</b>			
	Material :	<b>OR 158/189/221</b>					<b>OR 247/278</b>			
	<b>VBVGG (STD)</b>	KL01AA0	KL01AA0	KL01AA0	KL01AA0	KL01AA0	KL01AA0	KL01AA3	KL01AA3	KL01AA3
	<b>Q1Q1VGG</b>	KL01ACN	KL01ACN	KL01ACN	KL01ACN	KL01ACN	KL01ACN	KL01ACP	KL01ACP	KL01ACP
	<b>VBEGG</b>	KL01ACS	KL01ACS	KL01ACS	KL01ACS	KL01ACS	KL01ACS	KL01ACT	KL01ACT	KL01ACT
	<b>Q1Q1EGG</b>	KL01ACW	KL01ACW	KL01ACW	KL01ACW	KL01ACW	KL01ACW	KL01ACX	KL01ACX	KL01ACX
8*	OR FPM kit	KL02AAP	<b>Pmp-&gt;160/150</b>					<b>D: 158</b>		
		KL02AAQ	<b>Pmp-&gt;160/164</b>					<b>D: 189</b>		
		KL02AAR	<b>Pmp-&gt;200/204</b>					<b>D: 221</b>		
		KL02AAS	<b>Pmp-&gt;250/256</b>					<b>D: 247</b>		<b>Incl. 2 OR</b>
	OR EPDM kit	KL02AAV	<b>Pmp-&gt;160/150</b>					<b>D: 158</b>		
		KL02AAW	<b>Pmp-&gt;160/164</b>					<b>D: 189</b>		
		KL02AAX	<b>Pmp-&gt;200/204</b>					<b>D: 221</b>		
		KL02AAY	<b>Pmp-&gt;250/256</b>					<b>D: 247</b>		<b>Incl. 3 OR</b>
10	Imp. lock kit M12	KL39AAA								
11	Shaft w/bearings	155040010								
13	Covers Kit	KL17ABY								
14	Fill-Drain plug FPM	KL34AAB								
	Fill-Drain plug EPDM	KL34AAC								
15	Bearings kit	KL11AAN								
19	Seal rings kit	KL03AAS								

### Single Unit, 2P

1	Pump body	151380500	151380500	151380510	151380510	151380520	151380520	151380480	151380480	151380480
3	Seal-housing disc	160102000	160102000	160102010	160102010	150102220	160102020	150102230	150102230	150102230
4	Adaptor	161430150	161430150	161430160	161430160	161430170	161430170	161453170	161453170	161453170
5	Wear ring	168601491	168601491	168601491	168601491	168601491	168601491	168601491	168601491	168601491
6	Back wear ring					465020201		465020201	465020201	465020201
9	Support casing	161352730	161352730	161352730	161352730	161352730	161352730	161352730	161352730	161352730
12	Casing foot	161402160	161402160	161402170	161402170	161402180	161402180	161402190	161402190	161402190
21	Pump body support							151401210	151401210	151401210
22	Body support cover							164001510	164001510	164001510

### Single Unit, 4P

1	Pump body	151380500	151380500	151380510	151380510	151380520	151380520	151380480	151380480	151380480
3	Seal-housing disc	160102000	160102000	160102010	160102010	150102220	160102020	150102230	150102230	150102230
4	Adaptor	161430150	161430150	161430160	161430160	161430170	161430170	161453170	161453170	161453170
5	Wear ring	168601491	168601491	168601491	168601491	168601491	168601491	168601491	168601491	168601491
6	Back wear ring					465020201		465020201	465020201	465020201
9	Support casing	161352730	161352730	161352730	161352730	161352730	161352730	161352730	161352730	161352730
12	Casing foot	161402160	161402160	161402170	161402170	161402180	161402180	161402190	161402190	161402190
21	Pump body support							151401210	151401210	151401210
22	Body support cover							164001510	164001510	164001510

\* Recommended spare parts - Parti di ricambio consigliate

\* Pièces détachées conseillées - Empfohlene Ersatzteile

SHF25-80\_Pmp\_5\_Jan00\_EdN

## SHF 32 Pump

Pump with impeller	<b>32-125/119</b>	<b>32-125/136</b>	<b>32-160/150</b>	<b>32-160/164</b>	<b>32-200/188</b>	<b>32-200/204</b>	<b>32-250/222</b>	<b>32-250/242</b>	<b>32-250/256</b>
	102209360	102209370	102209380	102209390	102209400	102209410	102209420	102209430	102209440
ELP 3~ 2P, kW ->	<b>0,75</b>	<b>1,1</b>	<b>1,5</b>	<b>2,2</b>	<b>3,0</b>	<b>4,0</b>	<b>5,5</b>	<b>7,5</b>	<b>11,0</b>
ELP 3~ 4P, kW ->	<b>0,25</b>	<b>0,25</b>	<b>0,25</b>	<b>0,37</b>	<b>0,37</b>	<b>0,55</b>	<b>0,75</b>	<b>1,1</b>	<b>1,5</b>

	Dia - Ø	119	136	150	164	188	204	222	242	256
2*	Impeller 2P	KL04AA9	KL04ABA	KL04ABB	KL04ABC	KL04ABD	KL04ABE	KL04ACK	KL04ACL	KL04ACM
	Impeller 4P	KL04AA9	KL04ABA	KL04ABB	KL04ABC	KL04ABD	KL04ABE	KL04ACK	KL04ACL	KL04ACM

7*	Mech seal kit	<b>Seal D:22</b>					<b>Seal D:22-OR</b>			
	Material :	<b>OR 158/189/221</b>					<b>OR 247/278</b>			
	<b>VBVGG (STD)</b>	KL01AA0	KL01AA0	KL01AA0	KL01AA0	KL01AA0	KL01AA0	KL01AA3	KL01AA3	KL01AA3
	<b>Q1Q1VGG</b>	KL01ACN	KL01ACN	KL01ACN	KL01ACN	KL01ACN	KL01ACN	KL01ACP	KL01ACP	KL01ACP
	<b>VBEGG</b>	KL01ACS	KL01ACS	KL01ACS	KL01ACS	KL01ACS	KL01ACS	KL01ACT	KL01ACT	KL01ACT
	<b>Q1Q1EGG</b>	KL01ACW	KL01ACW	KL01ACW	KL01ACW	KL01ACW	KL01ACW	KL01ACX	KL01ACX	KL01ACX
8*	OR FPM kit	KL02AAP	<b>Pmp-&gt;160/150</b>					<b>D: 158</b>		
		KL02AAQ	<b>Pmp-&gt;160/164</b>					<b>D: 189</b>		
		KL02AAR	<b>Pmp-&gt;200/204</b>					<b>D: 221</b>		
		KL02AAS	<b>Pmp-&gt;250/256</b>					<b>D: 247</b>		
	OR EPDM kit	KL02AAV	<b>Pmp-&gt;160/150</b>					<b>D: 158</b>		
		KL02AAW	<b>Pmp-&gt;160/164</b>					<b>D: 189</b>		
		KL02AAX	<b>Pmp-&gt;200/204</b>					<b>D: 221</b>		
		KL02AAY	<b>Pmp-&gt;250/256</b>					<b>D: 247</b>		
10	Imp. lock kit M12	KL39AAA								
11	Shaft w/bearings	155040010								
13	Covers Kit	KL17ABY								
14	Fill-Drain plug FPM	KL34AAB								
	Fill-Drain plug EPDM	KL34AAC								
15	Bearings kit	KL11AAN								
19	Seal rings kit	KL03AAS								

### Single Unit, 2P-4P

1	Pump body	151380530	151380530	151380540	151380540	151380550	151380550	151380070	151380070	151380070
3	Seal-housing disc	160102000	160102000	160102010	160102010	150102220	160102020	150102230	150102230	150102230
4	Adaptor	161430150	161430150	161430160	161430160	161430170	161430170	161453170	161453170	161453170
5	Wear ring	168601491	168601491	168601491	168601491	168601491	168601491	168601491	168601491	168601491
6	Back wear ring					465020201		465020201	465020201	465020201
9	Support casing	161352730	161352730	161352730	161352730	161352730	161352730	161352730	161352730	161352730
12	Casing foot	161402160	161402160	161402170	161402170	161402180	161402180	161402190	161402190	161402190
21	Pump body support							151401210	151401210	151401210
22	Body support cover							164001510	164001510	164001510

\* Recommended spare parts - Parti di ricambio consigliate

\* Pièces détachées conseillées - Empfohlene Ersatzteile

SHF25-80\_Pmp\_5\_Jan00\_EdN

## SHF 40 Pump

Pump with impeller	<b>40-125/112</b>	<b>40-125/122</b>	<b>40-125/143</b>	<b>40-160/159</b>	<b>40-160/171</b>	<b>40-200/190</b>	<b>40-200/209</b>	<b>40-250/218</b>	<b>40-250/233</b>	<b>40-250/251</b>
	102209470	102209480	102209500	102209510	102209520	102209530	102209540	102209550	102209560	102209570
ELP 3~ 2P, kW ->	<b>1,1</b>	<b>1,5</b>	<b>2,2</b>	<b>3,0</b>	<b>4,0</b>	<b>5,5</b>	<b>7,5</b>	<b>11,0</b>	<b>11,0</b>	<b>15,0</b>
Pump with impeller	<b>40-125/112</b>	<b>40-125/135</b>	<b>40-125/143</b>	<b>40-160/159</b>	<b>40-160/171</b>	<b>40-200/190</b>	<b>40-200/209</b>	<b>40-250/218</b>	<b>40-250/233</b>	<b>40-250/251</b>
	102209470	102209490	102209500	102209510	102209520	102209530	102209540	102209550	102209560	102209570
ELP 3~ 4P, kW ->	<b>0,25</b>	<b>0,25</b>	<b>0,37</b>	<b>0,37</b>	<b>0,55</b>	<b>0,75</b>	<b>1,1</b>	<b>1,1</b>	<b>1,5</b>	<b>2,2</b>

<b>Kit</b>	Dia - Ø	112	122 - 135	143	159	171	190	209	218	233	251
2*	Impeller 2P	KL04ABF	KL04ABG	KL04ABH	KL04ABK	KL04ABL	KL04ABM	KL04ABN	KL04ABP	KL04ABQ	KL04ABR
	Impeller 4P	KL04ABF	KL04AK8	KL04ABH	KL04ABK	KL04ABL	KL04ABM	KL04ABN	KL04ABP	KL04ABQ	KL04ABR

7*	Mech seal kit	<b>Seal D:22</b>					<b>Seal D:22-OR</b>			<b>Seal D:28</b>	
	Material :	<b>OR 158/189/221</b>					<b>OR 247/278</b>			<b>OR 247/278</b>	
	<b>VBVGG (STD)</b>	KL01AA0	KL01AA0	KL01AA0	KL01AA0	KL01AA0	KL01AA0	KL01AA3	KL01AA3	KL01AA3	KL01ACL
	<b>Q1Q1VGG</b>	KL01ACN	KL01ACN	KL01ACN	KL01ACN	KL01ACN	KL01ACN	KL01ACP	KL01ACP	KL01ACP	KL01ACQ
	<b>VBEGG</b>	KL01ACS	KL01ACS	KL01ACS	KL01ACS	KL01ACS	KL01ACS	KL01ACT	KL01ACT	KL01ACT	KL01ACU
	<b>Q1Q1EGG</b>	KL01ACW	KL01ACW	KL01ACW	KL01ACW	KL01ACW	KL01ACX	KL01ACX	KL01ACX	KL01ACY	
8*	OR FPM kit	KL02AAP	<b>Pmp -&gt;125/143</b>					<b>D:158</b>			<b>Incl. 2 OR</b>
		KL02AAQ	<b>Pmp -&gt;160/171</b>					<b>D:189</b>			
		KL02AAR	<b>Pmp -&gt;200/209</b>					<b>D: 221</b>			
		KL02AAT	<b>Pmp -&gt;250/251</b>					<b>D:278</b>			
	OR EPDM kit	KL02AAV	<b>Pmp -&gt;125/143</b>					<b>D:158</b>			
		KL02AAW	<b>Pmp -&gt;160/171</b>					<b>D:189</b>			
		KL02AAX	<b>Pmp -&gt;200/209</b>					<b>D: 221</b>			
		KL02AAZ	<b>Pmp -&gt;250/251</b>					<b>D:278</b>			
10	Imp. lock kit M12	KL39AAA	<b>Pmp -&gt;250/233</b>								
	Imp. lock kit M16	KL39AAB	<b>Pmp - 250/251</b>								
11	Shaft w/bearings	155040010	<b>Pmp -&gt;250/233</b>								
		155040030	<b>Pmp - 250/251</b>								
13	Covers Kit	KL17ABY	<b>Pmp -&gt;250/233</b>								
		KL17ABZ	<b>Pmp - 250/251</b>								
14	Fill-Drain plug FPM	KL34AAB									
	Fill-Drain plug EPDM	KL34AAC	<b>All Versions</b>								
15	Bearings kit	KL11AAN	<b>Pmp -&gt;250/233</b>								
		KL11AAP	<b>Pmp - 250/251</b>								
19	Seal rings kit	KL03AAS	<b>All Versions</b>								

### Single Unit, 2P-4P

1	Pump body	151380560	151380560	151380560	151380570	151380570	151380580	151380580	151380110	151380110	151380110
3	Seal-housing disc	160102040	160102040	160102040	150102210	150102210	150102220	150102220	150102230	150102230	150102271
4	Adaptor	161430150	161430150	161430150	161430160	161430160	161430170	161430170	161453170	161453170	161452440
5	Wear ring	168601500	168601500	168601500	168601500	168601500	168601500	168601500	168601511	168601511	168601511
6	Back wear ring				465020201	465020201	465020201	465020201	465020201	465020201	465020201
9	Support casing	161352730	161352730	161352730	161352730	161352730	161352730	161352730	161352730	161352730	161352740
12	Casing foot	161402160	161402160	161402160	161402170	161402170	161402180	161402180	161402190	161402190	161402190
21	Pump body support								151401210	151401210	151401210
22	Body support cover								164001510	164001510	164001510

\* Recommended spare parts - Parti di ricambio consigliate

\* Pièces détachées conseillées - Empfohlene Ersatzteile

## SHF 50 Pump

Pump with impeller	<b>50-125/119</b>	<b>50-125/130</b>	<b>50-125/139</b>	<b>50-160/158</b>	<b>50-160/174</b>	<b>50-200/197</b>	<b>50-200/209</b>	<b>50-250/224</b>	<b>50-250/237</b>	<b>50-250/250</b>
	102209580	102209590	102209600	102209610	102209620	102209630	102209640	102209650	102209660	102209670
ELP 3- 2P, kW ->	<b>2,2</b>	<b>3,0</b>	<b>4,0</b>	<b>5,5</b>	<b>7,5</b>	<b>11,0</b>	<b>11,0</b>	<b>15,0</b>	<b>18,5</b>	<b>22,0</b>
ELP 3- 4P, kW ->	<b>0,37</b>	<b>0,37</b>	<b>0,55</b>	<b>0,75</b>	<b>1,1</b>	<b>1,1</b>	<b>1,5</b>	<b>2,2</b>	<b>2,2</b>	<b>3,0</b>

<b>Kit</b>	Dia - Ø	119	130	139	158	174	197	209	224	237	250
2*	Impeller 2P	KL04ABS	KL04ABT	KL04ABU	KL04ABV	KL04ABW	KL04ABX	KL04ABY	KL04ABZ	KL04AB0	KL04AB1
	Impeller 4P	KL04ABS	KL04ABT	KL04ABU	KL04ABV	KL04ABW	KL04ABX	KL04ABY	KL04ABZ	KL04AB0	KL04AB1

7*	Mech seal kit	<b>Seal D:22</b>				<b>Seal D:22</b>			<b>Seal D:28</b>		
	Material :	<b>OR 158/189/221</b>				<b>OR 247/278</b>			<b>OR 247/278</b>		
	<b>VBVGG (STD)</b>	KL01AA0	KL01AA0	KL01AA0	KL01AA0	KL01AA3	KL01AA3	KL01AA3	KL01ACL	KL01ACL	KL01ACL
	<b>Q1Q1VGG</b>	KL01ACN	KL01ACN	KL01ACN	KL01ACN	KL01ACP	KL01ACP	KL01ACP	KL01ACQ	KL01ACQ	KL01ACQ
	<b>VBEGG</b>	KL01ACS	KL01ACS	KL01ACS	KL01ACS	KL01ACT	KL01ACT	KL01ACT	KL01ACU	KL01ACU	KL01ACU
	<b>Q1Q1EGG</b>	KL01ACW	KL01ACW	KL01ACW	KL01ACW	KL01ACX	KL01ACX	KL01ACX	KL01ACY	KL01ACY	KL01ACY
8*	OR FPM kit	KL02AAQ	<b>Pmp -&gt;160/174</b>					<b>D:189</b>	<b>Incl. 2 OR</b>		
		KL02AAS	<b>Pmp -&gt;200/209</b>					<b>D: 247</b>			
		KL02AAT	<b>Pmp -&gt;250/250</b>					<b>D: 278</b>			
	OR EPDM kit	KL02AAW	<b>Pmp -&gt;160/174</b>					<b>D:189</b>	<b>Incl. 3 OR</b>		
KL02AAY		<b>Pmp -&gt;200/209</b>					<b>D: 247</b>				
KL02AAZ		<b>Pmp -&gt;250/250</b>					<b>D: 278</b>				
10	Imp. lock kit M12	KL39AAA	<b>Pmp-&gt;200/209</b>								
	Imp. lock kit M16	KL39AAB	<b>Pmp-&gt;250/250</b>								
11	Shaft w/bearings	155040010	<b>Pmp-&gt;200/209</b>								
		155040030	<b>Pmp-&gt;250/250</b>								
13	Covers Kit	KL17ABY	<b>Pmp-&gt;200/209</b>								
		KL17ABZ	<b>Pmp-&gt;250/250</b>								
14	Fill-Drain plug FPM	KL34AAB									
	Fill-Drain plug EPR	KL34AAC									
15	Bearings kit	KL11AAN	<b>Pmp-&gt;200/209</b>								
		KL11AAP	<b>Pmp-&gt;250/250</b>								
19	Seal rings kit	KL03AAS									

### Single Unit, 2P-4P

1	Pump body	151380590	151380590	151380590	151380600	151380600	151380140	151380140	151380150	151380150	151380150
3	Seal-housing disc	150102280	150102280	150102280	150102280	150102280	150102300	150102300	150102271	150102271	150102271
4	Adaptor	161430160	161430160	161430160	161430160	161430160	161453180	161453180	161452440	161452440	161452440
5	Wear ring	168601511	168601511	168601511	168601511	168601511	168601511	168601511	168601511	168601511	168601511
6	Back wear ring	465020201	465020201	465020201	465020201	465020201	465020201	465020201	465020201	465020201	465020201
9	Support casing	161352730	161352730	161352730	161352730	161352730	161352730	161352730	161352740	161352740	161352740
12	Casing foot	161402170	161402170	161402170	161402180	161402180	161402180	161402180	161402190	161402190	161402190
21	Pump body support						151401200	151401200	151401210	151401210	151401210
22	Body support cover						164001510	164001510	164001510	164001510	164001510

\* Recommended spare parts - Parti di ricambio consigliate

\* Pièces détachées conseillées - Empfohlene Ersatzteile

## SHF 65 Pump

Pump with impeller	<b>65-160/119</b>	<b>65-160/129</b>	<b>65-160/137</b>	<b>65-160/168</b>	<b>65-160/177</b>	<b>65-200/192</b>	<b>65-200/203</b>	<b>65-200/215</b>	<b>65-250/240</b>	<b>65-250/255</b>
	102209705	102209710	102209720	102209740	102209750	102209780	102209790	102209800	102209850	102209870
ELP 3 ~, 2P, kW ->	<b>4.0</b>	<b>5.5</b>	<b>7.5</b>	<b>11.0</b>	<b>11.0</b>	<b>15.0</b>	<b>18.5</b>	<b>22.0</b>	<b>30.0</b>	<b>37.0</b>
Pump with impeller	<b>65-160/121</b>	<b>65-160/129</b>	<b>65-160/140</b>	<b>65-160/168</b>	<b>65-160/177</b>	<b>65-200/187</b>	<b>65-200/203</b>	<b>65-200/222</b>	<b>65-250/240</b>	<b>65-250/255</b>
	102209710	102209710	102209730	102209740	102209750	102209775	102209790	102209810	102209850	102209870
ELP 3 ~, 4P, kW ->	<b>0.55</b>	<b>0.75</b>	<b>1.1</b>	<b>1.1</b>	<b>1.5</b>	<b>1.5</b>	<b>2.2</b>	<b>3.0</b>	<b>4.0</b>	<b>5.5</b>

<b>Kit</b>	Dia - Ø	119 - 121	129	137 - 140	168	177	192 - 187	203	215 - 222	240	255
2*	Impeller 2P	KL04AEC	KL04AB3	KL04AEE	KL04AEF	KL04AEG	KL04AEH	KL04AEK	KL04AEL	KL04ALH	KL04ALK
	Impeller 4P	KL04AB2	KL04AB3	KL04AB4	KL04AEF	KL04AEG	KL04ALF	KL04AEK	KL04ALG	KL04ALH	KL04ALK

7*	Mech seal kit	<b>Seal D:22</b>				<b>Seal D:28</b>				<b>Seal D:33</b>	
	Material :	<b>OR 247/278</b>				<b>OR 247/278</b>				<b>OR 278/304</b>	
	<b>VBVGG (STD)</b>	KL01AA3	KL01AA3	KL01AA3	KL01AA3	KL01ACL	KL01ACL	KL01ACL	KL01ACL	KL01ACL	KL01ACM
	<b>Q1Q1VGG</b>	KL01ACP	KL01ACP	KL01ACP	KL01ACP	KL01ACQ	KL01ACQ	KL01ACQ	KL01ACQ	KL01ACQ	KL01ACR
	<b>VBEGG</b>	KL01ACT	KL01ACT	KL01ACT	KL01ACT	KL01ACU	KL01ACU	KL01ACU	KL01ACU	KL01ACU	KL01ACV
	<b>Q1Q1EGG</b>	KL01ACX	KL01ACX	KL01ACX	KL01ACX	KL01ACY	KL01ACY	KL01ACY	KL01ACY	KL01ACY	KL01ACZ
8*	OR FPM Kit	KL02AAS	<b>Pmp -&gt; 200/222</b>				<b>D: 247</b>		<b>Incl. 2 OR</b>		
		KL02AAT	<b>Pmp -&gt; 250/255</b>				<b>D: 278</b>				
	OR EPDM Kit	KL02AAY	<b>Pmp -&gt; 200/222</b>				<b>D: 247</b>		<b>Incl. 3 OR</b>		
		KL02AAZ	<b>Pmp -&gt; 250/255</b>				<b>D: 278</b>				
10	Imp.lock kit M12	KL39AAA	<b>Pmp -&gt;160/168</b>								
	Imp.lock kit M16	KL39AAB	<b>Pmp -&gt;200/215</b>								
	Imp.lock kit M20	KL39AAC	<b>Pmp -&gt;250/255</b>								
11	Shaft w/bearings	155040010	<b>Pmp -&gt;160/168</b>								
		155040030	<b>Pmp -&gt;200/222</b>								
		155040090	<b>Pmp -&gt;250/255</b>								
13	Covers Kit	KL17ABY	<b>Pmp-&gt;160/168</b>								
		KL17ABZ	<b>Pmp-&gt;200/222</b>								
		KL17AB0	<b>Pmp-&gt;250/255</b>								
14	Fill-Drain plug FPM	KL34AAB	<b>-&gt;65/160</b>								
	Fill-Drain plug EPDM	KL34AAC	<b>-&gt;65/160</b>								
	Fill-Drain plug FPM	KL34AAD	<b>-&gt;65/250</b>								
	Fill-Drain plug EPDM	KL34AAE	<b>-&gt;65/250</b>								
15	Bearings kit	KL11AAN	<b>Pmp-&gt;160/168</b>								
		KL11AAP	<b>Pmp-&gt;200/222</b>								
		KL11AAQ	<b>Pmp-&gt;250/255</b>								
19	Seal rings kit	KL03AAS	<b>Pmp-&gt;250/255</b>								

### Single Unit, 2P-4P

1	Pump body	151380160	151380160	151380160	151380170	151380170	151380180	151380180	151380180	151380190	151380190
3	Seal-housing disc	160102120	160102120	160102120	150102320	150102331	150102331	150102331	150102331	150102352	150102352
4	Adaptor	161453180	161453180	161453180	161453180	161452430	161452430	161452430	161452430	161452920	161452920
5	Wear ring	168601521	168601521	168601521	168601600	168601600	168601600	168601600	168601600	168601600	168601600
6	Back wear ring				168601280	168601280	168601280	168601280	168601280	168601280	168601280
9	Support casing	161352730	161352730	161352730	161352730	161352740	161352740	161352740	161352740	161352940	161352940
12	Casing foot	161402180	161402180	161402180	161402180	161402190	161402190	161402190	161402190	161402190	161402190
21	Pump body support	151401220	151401220	151401220	151401220	151401220	161430400	161430400	161430400	161430410	161430410
22	Body support cover	164001510	164001510	164001510	164001510	164001510					

\* Recommended spare parts - Parti di ricambio consigliate

\* Pièces détachées conseillées - Empfohlene Ersatzteile



## SHF 80 Pump

Pump with impeller	<b>80-160/169</b>	<b>80-160/177</b>	<b>80-160/186</b>	<b>80-200/198</b>	<b>80-200/220</b>	<b>80-200/215</b>	<b>80-200/226</b>	<b>80-250/237</b>	<b>80-250/252</b>	<b>80-250/270</b>
	102209880	102209890	102209900	102209920	102209930	102209940	102209950	102209970	102209980	102209990
ELP 3- 2P, kW ->	<b>11,0</b>	<b>15,0</b>	<b>18,5</b>	<b>22,0</b>		<b>30,0</b>	<b>37,0</b>	<b>45,0</b>	<b>55,0</b>	<b>75,0</b>
ELP 3- 4P, kW ->	<b>1,5</b>	<b>2,2</b>	<b>2,2</b>	<b>3,0</b>	<b>4,0</b>			<b>5,5</b>	<b>7,5</b>	<b>9,2</b>

<b>Kit</b>	Dia - Ø	169	177	186	198	220	215	226	237	252	270
2*	Impeller, 2P	KL04ALL	KL04ALM	KL04ALN	KL04ALP		KL04ALO	KL04AL1	KL04ALR	KL04ALS	KL04ALT
	Impeller, 4P	KL04ALL	KL04ALM	KL04ALN	KL04ALP	KL04ALQ			KL04ALR	KL04ALS	KL04ALT

7*	Mech seal kit	<b>Seal D:28</b>					<b>Seal D:33</b>				
	Material :	<b>OR 247/278</b>					<b>OR 278/304</b>				
	<b>VBVGG (STD)</b>	KL01ACL	KL01ACL	KL01ACL	KL01ACL	KL01ACL	KL01ACM	KL01ACM	KL01ACM	KL01ACM	KL01ACM
	<b>Q1Q1VGG</b>	KL01ACQ	KL01ACQ	KL01ACQ	KL01ACQ	KL01ACQ	KL01ACR	KL01ACR	KL01ACR	KL01ACR	KL01ACR
	<b>VBEGG</b>	KL01ACU	KL01ACU	KL01ACU	KL01ACU	KL01ACU	KL01ACV	KL01ACV	KL01ACV	KL01ACV	KL01ACV
	<b>Q1Q1EGG</b>	KL01ACY	KL01ACY	KL01ACY	KL01ACY	KL01ACY	KL01ACZ	KL01ACZ	KL01ACZ	KL01ACZ	
8*	OR FPM Kit	KL02AAT	<b>Pmp -&gt; 200/226</b>				<b>D: 278</b>				
		KL02AAU	<b>Pmp -&gt; 250/250</b>				<b>D: 304   Incl. 2 OR</b>				
	OR EPDM Kit	KL02AAZ	<b>Pmp -&gt; 200/226</b>				<b>D: 278</b>				
		KL02AA0	<b>Pmp -&gt; 250/270</b>				<b>D: 304   Incl. 3 OR</b>				
10	Imp.lock kit M16	KL39AAB	<b>Pmp-&gt;200/198</b>								
	Imp.lock kit M20	KL39AAC	<b>Pmp-&gt;250/270</b>								
11	Shaft w/bearings	155040030	<b>Pmp-&gt;160/186</b>								
		155040070	<b>Pmp 200/198 , 200/220</b>								
		155040090	<b>Pmp 200/215 , 200/226</b>				<b>Pmp 250/237 - 250/270</b>				
13	Covers Kit	KL17ABZ	<b>Pmp-&gt;160/186</b>								
		KL17AB0	<b>Pmp-&gt;250/270</b>								
14	Fill-Drain plug FPM	KL34AAB	<b>All Versions ( frm 65/200)</b>								
	Fill-Drain plug EPDM	KL34AAC									
15	Bearings kit	KL11AAP	<b>Pmp-&gt;160/186</b>								
		KL11AAQ	<b>Pmp-&gt;250/270</b>								
19	Seal rings kit	KL03AAS	<b>All Versions</b>								

### Single Unit, 2P

1	Pump body	151380210	151380210	151380210	151380220		151380220	151380220	151380230	151380230	151380230
3	Seal-housing disc	150102371	150102371	150102371	150102371		150102382	150102382	150102392	150102392	150102392
4	Adaptor	161452910	161452910	161452910	161452920		161452920	161452920	161452930	161452930	161452930
5	Wear ring	168601610	168601610	168601610	168601610		168601610	168601610	168601610	168601610	168601610
6	Back wear ring	168601280	168601280	168601280	168601280		168601280	168601280	168601280	168601280	168601280
9	Support casing	161352740	161352740	161352740	161352940		161352940	161352940	161352940	161352940	161352940
12	Casing foot	161402190	161402190	161402190	161402180		161402180	161402180	161402190	161402190	161402190
21	Pump body support	151401230	151401230	151401230	161430430		161430430	161430430	161430420	161430420	161430420
22	Body support cover	164001510	164001510	164001510							

### Single Unit, 4P

1	Pump body	151380210	151380210	151380210	151380220	151380220			151380230	151380230	151380230
3	Seal-housing disc	150102371	150102371	150102371	150102371	150102371			150102392	150102392	150102392
4	Adaptor	161452910	161452910	161452910	161452920	161452920			161452930	161452930	161452930
5	Wear ring	168601610	168601610	168601610	168601610	168601610			168601610	168601610	168601610
6	Back wear ring	168601280	168601280	168601280	168601280	168601280			168601280	168601280	168601280
9	Support casing	161352740	161352740	161352740	161352940	161352940			161352940	161352940	161352940
12	Casing foot	161402190	161402190	161402190	161402180	161402180			161402190	161402190	161402190
21	Pump body support	151401230	151401230	151401230	161430430	161430430			161430420	161430420	161430420
22	Body support cover	164001510	164001510	164001510							

\* Recommended spare parts - Parti di ricambio consigliate

\* Pièces détachées conseillées - Empfohlene Ersatzteile