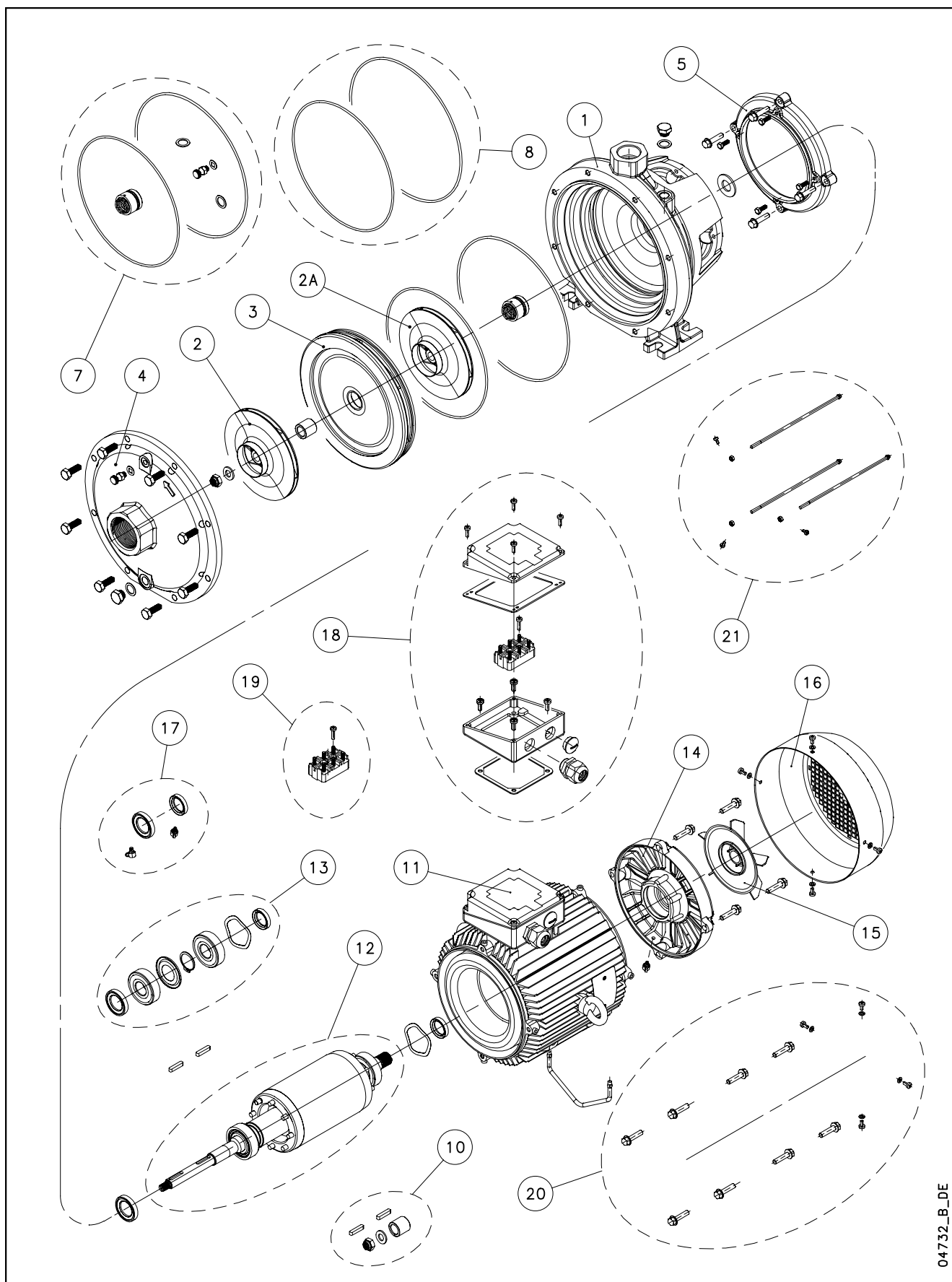


2FHE/P-2FHE4/P / 2CHX/P-2CHX4/P



04732_B_DE

Lowara, Flygt, Vogel Pumpen are trademarks of Xylem Inc. or one of its subsidiaries. Goulds is a registered trademark of Goulds Pumps, Inc. and is used under license.

N.	Descrizione it	Description en	Description fr	Beschreibung de	Descripción es	Descrição pt
1	Corpo pompa completo	Complete pump body	Corps de pompe complet	Komplettes Pumpengehäuse	Caja bomba completa	Corpo da bomba completo
2	Girante A	Impeller A	Roue A	Laufrad A	Rodete A	Impulsor A
2A	Girante B	Impeller B	Roue B	Laufrad B	Rodete B	Impulsor B
3	Diffusore	Diffuser	Diffuseur	Diffusor	Difusor	Difusor
4	Flangia di aspirazione	Suction flange	Bride d'aspiration	Ansaugflansch	Brida de aspiración	Flange de aspiração
5	Flangia motore	Motor flange	Bride moteur	Motorflansch	Brida motor	Flange motor
7	Kit tenuta mecc. + OR	Mechanical seal + OR kit	Kit garniture méc. + joints toriques	Gleitringdichtung + OR	Kit sello mec. + junta tórica	Kit vedante mec. + OR
8	Kit OR	O ring kit	Kit joints toriques	O-Ring-Dichtungssatz	Kit juntas tóricas	Kit guarnições OR
10	Gruppo fissaggio girante	Impeller locking group	Groupe de fixation roue	Befestigungsgruppe des Laufrads	Grupo de fijación rodete	Grupo de fixação do impulsor
11	Cassa statore - scatola morsettiera	Stator housing - terminal box	Carcasse stator - boite a bornier	Statorgehäuse - Klemmenkastendeckel	Carcasa estator - Caja de bornes	Caixa estator- Quadro de grampos
12	Albero rotore completo	Shaft rotor complete	Arbre rotor au complet	Rotorwelle Komplett	Eje rotor complete	Eixo rotor completo
13	Cuscinetti - Anelli	Bearings - Rings	Roulements - Anneaux	Lagers - Rings	Cojinetes - Anillos	Rolamentos - Anéis
14	Scudo posteriore NDE	Rear shield NDE	Flasque arriere	Hinteren Schild	Escudo posterior	Escudo posterior
15	Ventola	Fan	Ventilateur	Lüfterrad	Ventilador	Ventoinha
16	Copriventola	Fan cover	Couvercle de ventilateur	Lüfterradhaube	Tapa ventilador	Cobertura da ventoinha
17	Anelli tenuta - Tappi	Oil seals - Plugs	Bagues étanchéité-Bouchons	Abdichtungsringen-Schrauben	Anillos estanqueidad- Tapones	Selos anéis -Tampões
18	Scatola morsettiera	Terminal box	Boite a bornier	Klemmenkasten	Caja de bornes	Quadro de grampos
19	Basetta con perni	Base with pins	Bornier avec fiches	Klemmenbrett mit zapfen	Soporte de pernos	Bloco de grampos
20	Viteria	Screws	Vis	Schrauben	Tornillos	Parafusos
21	Tiranti PLM90	Tie rods PLM90	Tiges PLM90	Spannstangen PLM90	Tirantes PLM90	Tirantes PLM90
N.	Beschrijving nl	Περιγραφή el	Açıklama tr	Kuvaus fi	Описание ru	Opis pl
1	Compleet pomphuis	Πλήρες σώμα αντλίας	Komple pompa gövdesi	Täydellinen pumpun runko	Полный корпус насоса	Kompletny korpus pompy
2	Waaier A	Πτερόγιο Α	A pompa rotoru	Juoksuyöörä A	Рабочее колесо А	Wirnik A
2A	Waaier B	Πτερόγιο Β	B pompa rotoru	Juoksuyöörä B	Рабочее колесо В	Wirnik B
3	Diffusor	Διαχυτήρας	Difüzör	Diffusori	Диффузор	Dyfuzor
4	Aanzuigflens	Φλάντζα αναρρόφησης	Emme flanşı	Imulaippa	Фланец всасывания	Kolnierz ssawny
5	Motorflens	Φλάντζα κινητήρα	Motor flanşı	Moottori-laippa	Фланец двигателя	Kolnierz silnika
7	Set mech. asafdichting + O-ring	Κιτ μηχανικής στεγαν + OR	Mekanik salmastra kiti + O-Ring	Mek. tiiviste + O-rengassarja	Комплект мех.прокладки + OR	Zestaw uszcz.mech. + OR
8	Set O-ringafdichtingen	Κιτ τσιμουχών OR	O-Ring kiti	O-rengassarja	Комплект кольцевых прокладок OR	Zestaw uszczelek OR
10	Waaierbevestigingsblok	Σετ ασφάλισης πτερυγίων	Pompa rotorunu sabitleme takımı	Juoksuyöörän kiinnityskokonaisuus	Узел фиксации рабочего колеса	Zespół mocujący wirnika
11	Statorhuis - Klemmenbord	Κάσα στάτη - κιβώτιο συστοιχίας ακροδεκτών	Stator yuvası - Terminal kutusu	Staattoirin kotelo - liitinalusta	Корпус статора - коробка клемника	Obudowa silnika - stator
12	Rotor as compleet	Άξονας στρόφαة πλήρης	Dönerç mili tam	Aksel roottori komplet	ротор древко законченный	Walek kompletny (z rotorem)
13	Lagers - Ringen	Κουζινέτα - δαχτυλιδια	Rulmanlar - Ringes	Laakeri - Rengas	Подшипники	Łożyska – pierścienie
14	Achtergedeelte Motorhuis	Πίσω προφυλακτήρας NDE	Arka koruma	Taka-kilpi	задний щит	Tylna tarcza
15	Ventilator	Ανεμιστήρας	Vantilatör	Tuuletin	Импеллер	Wentylator
16	Ventilatorkap	Κάλυμμα ανεμιστήρων	Vantilatör kapağı	Tuulettimen suojus	Крышка импеллера	Oslona wentylatora
17	Zegel ringen - Stekkers	Στεγανοποιητικοί δακτύλιοι - Πώματα	Fok ringes - Tikas	Sinetin renkaasta - pistokkeiden	нефть тюлень -кольцо	Uszczelka olejowa – zatyczki
18	Kabelkast	Κιβώτιο συστοιχίας ακροδεκτών	Terminal Kutu	Terminaal in laatikko	Крышка клемника	Skrzynka zaciskowa
19	Klemmenbord	Βάση με πείρους	Kaide bacaklar	Pohja nuppineula	основа булавка	Podstawa ze sworzeniami
20	Schroeven	Βίδες	Vidalar	Ruuvit	Винты	Śruby
21	Trekstangen PLM90	Ράβδοι δεσμών PLM90	Çekme çubukları PLM90	Vetotankot PLM90	Тяги PLM90	Szpilkki gwintowane PLM90

2FHE 32/D - 2FHE4 32/D

ELP 3 -, 2P 400/690

kW ->

ELP 3 -, 4P 230/400

kW ->

32-250/55/D	32-250/75/D
104500060	104500070
5,5	7,5
32-250/07/D	32-250/11/D
104500590	104500600
0,75	1,1

Pump kit

7*	Mech. Seal D: 22, OR, bleed valve	VBPGG	VBEGG	VBVGG	VCEGG	Q1Q1VGG	STD ->Seal VBPGG - OR NBR
		KL01AB8	KL01AB9	KL01ACB	KL01ACA	KL01ACC	At Stock ->VBxGG
8*	OR NBR kit	KL02AAL	Std Elastomers				
	OR EPDM kit	KL02AAM					
	OR FPM kit	KL02AAN					
10	Imp. lock w/keys - splash-guard	KL39AAD					

Motor kit

11	Stator	2P	5KL25ACF	5KL25ABR
	w/terminal box	4P	5KL25ACN	5KL25ACN
12	Shaft- Rotor	2P	5KL09AES	5KL09AET
	complete	4P	5KL09AEU	5KL09AEU
13*	Bearings - Rings	2P	5KL11AA8	5KL11AA9
		4P	5KL11AA2	5KL11AA2
17	Oil seals - Plugs	2P	5KL03AAB	5KL03AAC
		4P	5KL03AAA	5KL03AAA
18	Terminal box	2P	5KL30AAL	5KL30AAN
		4P	5KL30AAE	5KL30AAE
20	Screws PLM 100-160	2P	5KL40AAA	5KL40AAA
21	Tie rods PLM90	4P	5KL22AAA	5KL22AAA

Pump Single Unit

1	Pump casing	2P	5KL21AAC	5KL21AAD
	complete	4P	5KL21AAE	5KL21AAE
2*	Front imp.	2P	150783455	150783555
		4P	150783455	150783505
2A*	Back imp.	2P	150783505	150783555
		4P	150783505	150783555
3	Diffuser	2P	162850140	162850140
		4P	162850140	162850140
4	Suct. flange	2P	161050640	161050640
		4P	161050640	161050640
5	Mot. flange	2P	-	Incl. casing
		4P	Incl. casing	Incl. casing

Motor Single Unit

14	Rear shield NDE	2P	5KL20AA1	5KL20AA3
		4P	5KL20AAZ	5KL20AAZ
15	Fan	2P	540760030	540760040
		4P	540760010	540760010
16	Fan cover	2P	5KL29AAD	5KL29AAF
		4P	5KL29AAA	5KL29AAA
19	Base with pins	2P	5830AAB	5830AAB
		4P	5830AAA	5830AAA

* Recommended spare parts - Parti di ricambio consigliate

* Pièces détachées conseillées - Empfohlene Ersatzteile

2FHE 32_5_D_Dec14_EdA

xylem

